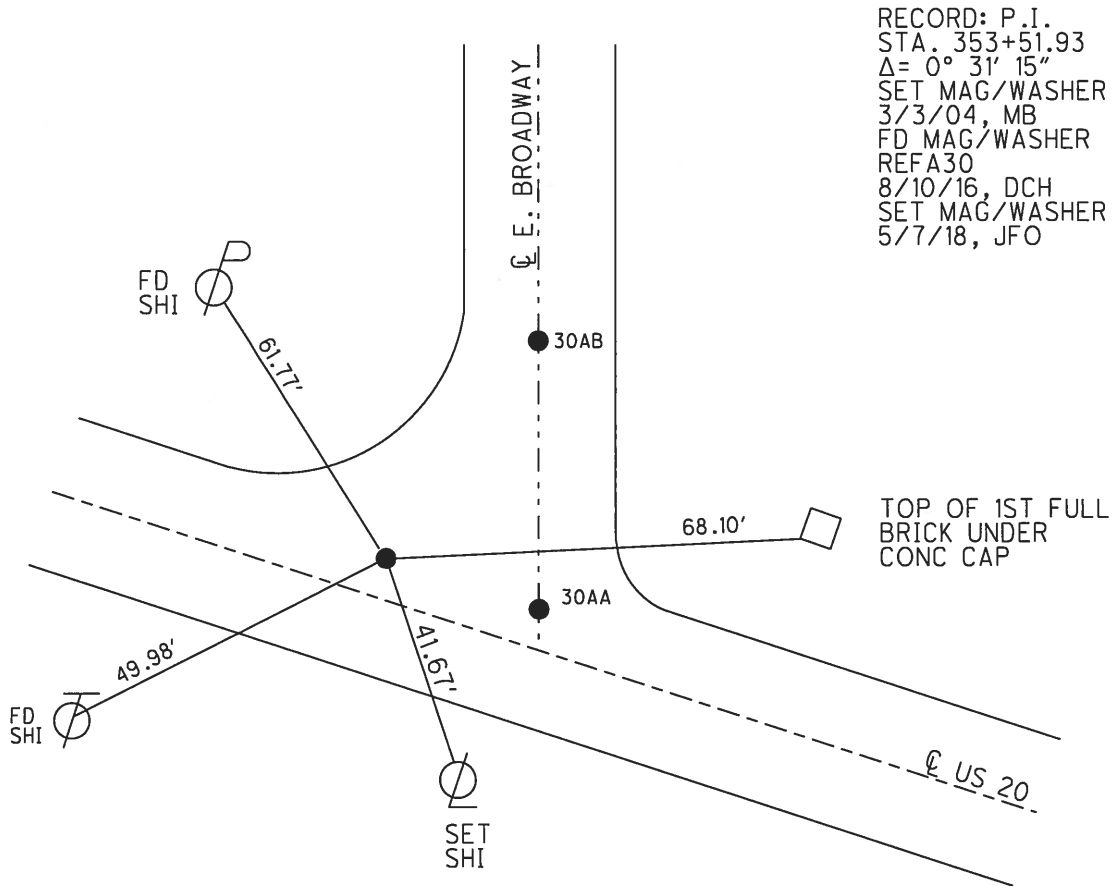
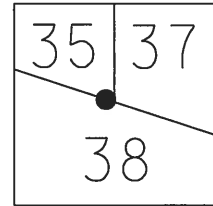


O.D.O.T. DISTRICT 2 SURVEY OFFICE (USE ONLY)

PERSONNEL	REFERENCE NO.	30 A	SHEET	9	OF	23
NOTES	LEU	DATE	8/10/16	ROUTE	US 20	
H.C.	HOMAN	WEATHER	CLEAR	COUNTY	WOOD	
R.C.	LEU	TEMP.	72°	TOWNSHIP	TROY	
				SECTION	RT 37	
					T 6 N R 12 E	

TYPE MONUMENT MAG/WASHER  
 ON SURFACE - ~~BELOW~~ ON  
 LEFT - ℄ PAV'T - ~~RIGHT~~ 4.0'  
15.4' TO RT EDGE PAVEMENT  
 S.L.M. 439+63  
 GRID: NORTHING: 673750.643 EASTING: 1691618.729



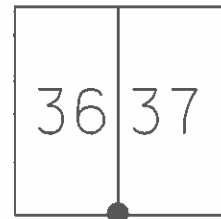
RECORD: P.I.  
 STA. 353+51.93  
 $\Delta = 0^\circ 31' 15''$   
 SET MAG/WASHER  
 3/3/04, MB  
 FD MAG/WASHER  
 REFA30  
 8/10/16, DCH  
 SET MAG/WASHER  
 5/7/18, JFO

DISTANCE:  
 30A-30AA=35.32'  
 30AA-30AB=69.41'  
 30AB-30A=59.91'

O.D.O.T. DISTRICT 2 SURVEY OFFICE (USE ONLY)

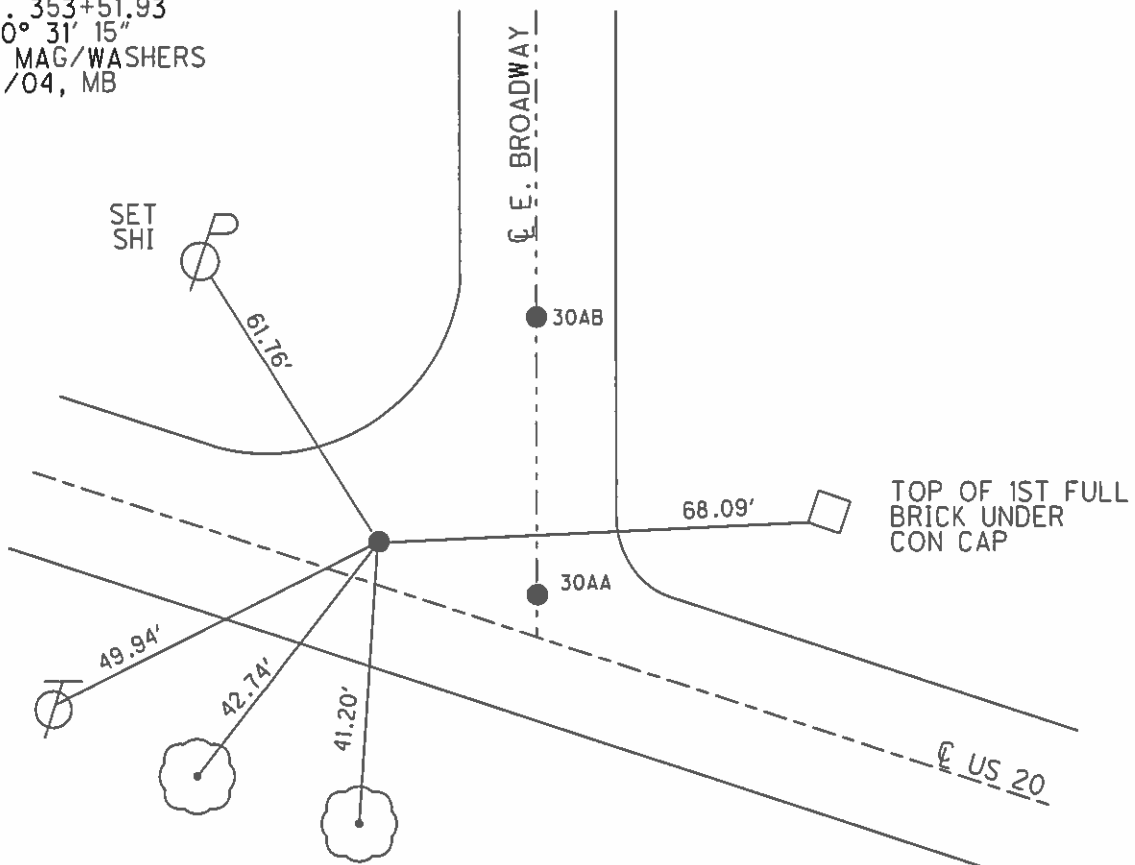
PERSONNEL	REFERENCE NO.	30 A	SHEET	9	OF	19
NOTES	MALINSKY	DATE	6/24/02	ROUTE	US 20	
H.C.	MOSER	WEATHER	CLEAR	COUNTY	WOOD	
R.C.	SIEFRING	TEMP.	95°	TOWNSHIP	TROY	
	BEAUMONT			SECTION	RT 37	
				T	6	N
				R	12	E

TYPE MONUMENT P.K.NAIL  
 ON SURFACE - ~~BELOW~~ ON  
 LEFT - CL PAV'T - ~~RIGHT~~ 4.0'  
15.4' TO RT EDGE PAVEMENT  
 S.L.M. 439+63



GRID: NORTHING: \_\_\_\_\_ EASTING: \_\_\_\_\_

RECORD: P.I.  
 STA. 353+51.93  
 $\Delta = 0^\circ 31' 15''$   
 SET MAG/WASHERS  
 3/3/04, MB



DISTANCE:  
 30A-30AA=35.37'  
 30AA-30AB=68.09'  
 30AB-30A=59.91'

# O.D.O.T. DISTRICT 2 SURVEY OFFICE

PERSONNEL

REFERENCE NO. 30-A

SHEET 12 OF 19

NOTES LOEHRKE

H.C. CURTIS

R.C. ROMERO

DATE 5-13-92

WEATHER CLOUDY

TEMP. +70

ROUTE U.S. 20

COUNTY WOOD

TOWNSHIP TROY

SECTION \_\_\_\_\_

T \_\_\_\_\_ R \_\_\_\_\_

Reset 6-29-93

TYPE MONUMENT P.K./WASHERS

ON SURFACE - BELOW Yes ("c" 2" below)

LEFT- & PAV'T. - RIGHT 40'

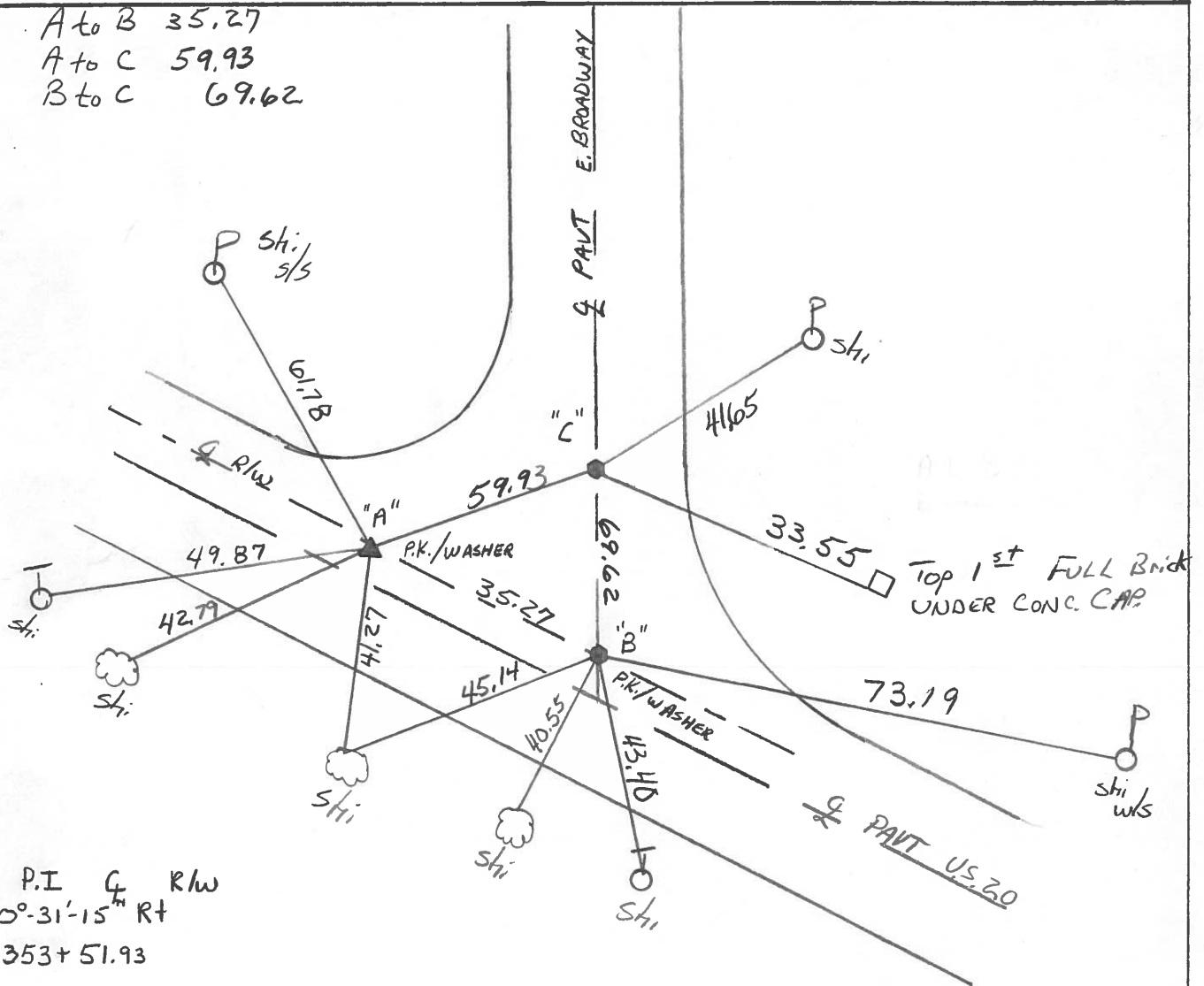
15.4 TO RT EDGE PAVEMENT

S.L.M. A = 439+63 B = 439+98

RT 36	RT 39
RT 37	RT 38



A to B 35.27  
A to C 59.93  
B to C 69.62



PE "A" P.I. G R/W  
 $\Delta = 0^{\circ}-31'-15''$  RT  
 Sta 353+51.93

County Wood S.R. U.S. #20

Date 5/20/80 Drawn 5/27/80

Township Troy

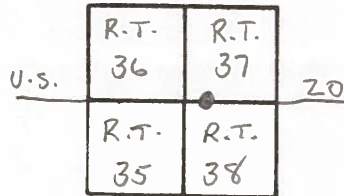
Weather sunny-windy

Section R-T. 37

Temp. 65°

T. N. R. E

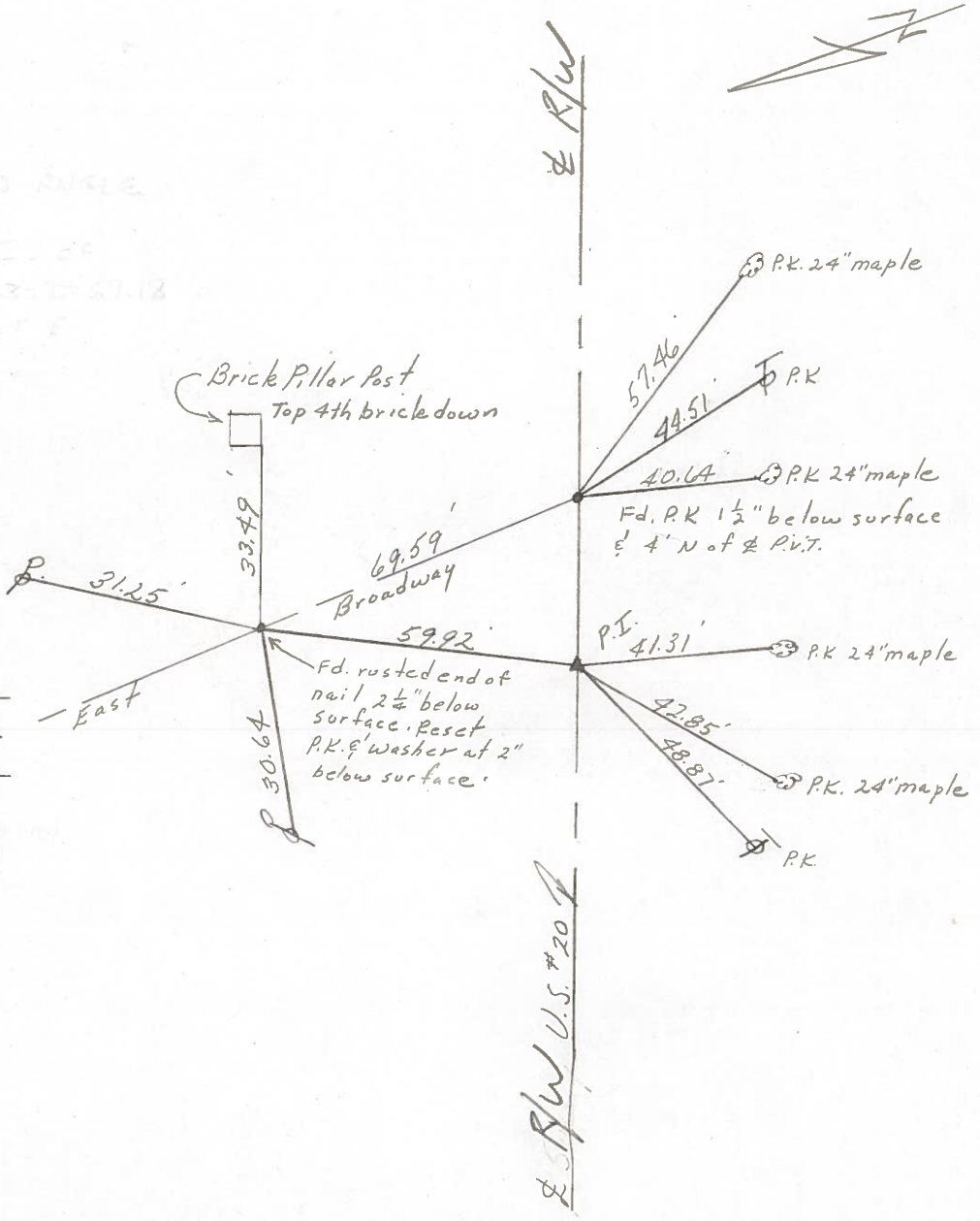
Personnel CRONIN  
RIPPLE  
GEYMAN  
MOSSER  
BARBOUR



30-A

Note!!  
 1977 PLAN SHOWS 30 R/W  
 1948 PLAN SHOWS P.I. OF  
 CURVE AT STA. 3+27.67.12  
 SEE V.P. POINT OF  
 CURVE AT STA. 3+27.67.12

P.I.  
 $\Delta = 00^{\circ}31'15''$  RT. & R/W  
 353+51.93  
 Fd. P.K.  $1\frac{1}{2}''$  below surface  
 and 4' North of &  
 of pavement.

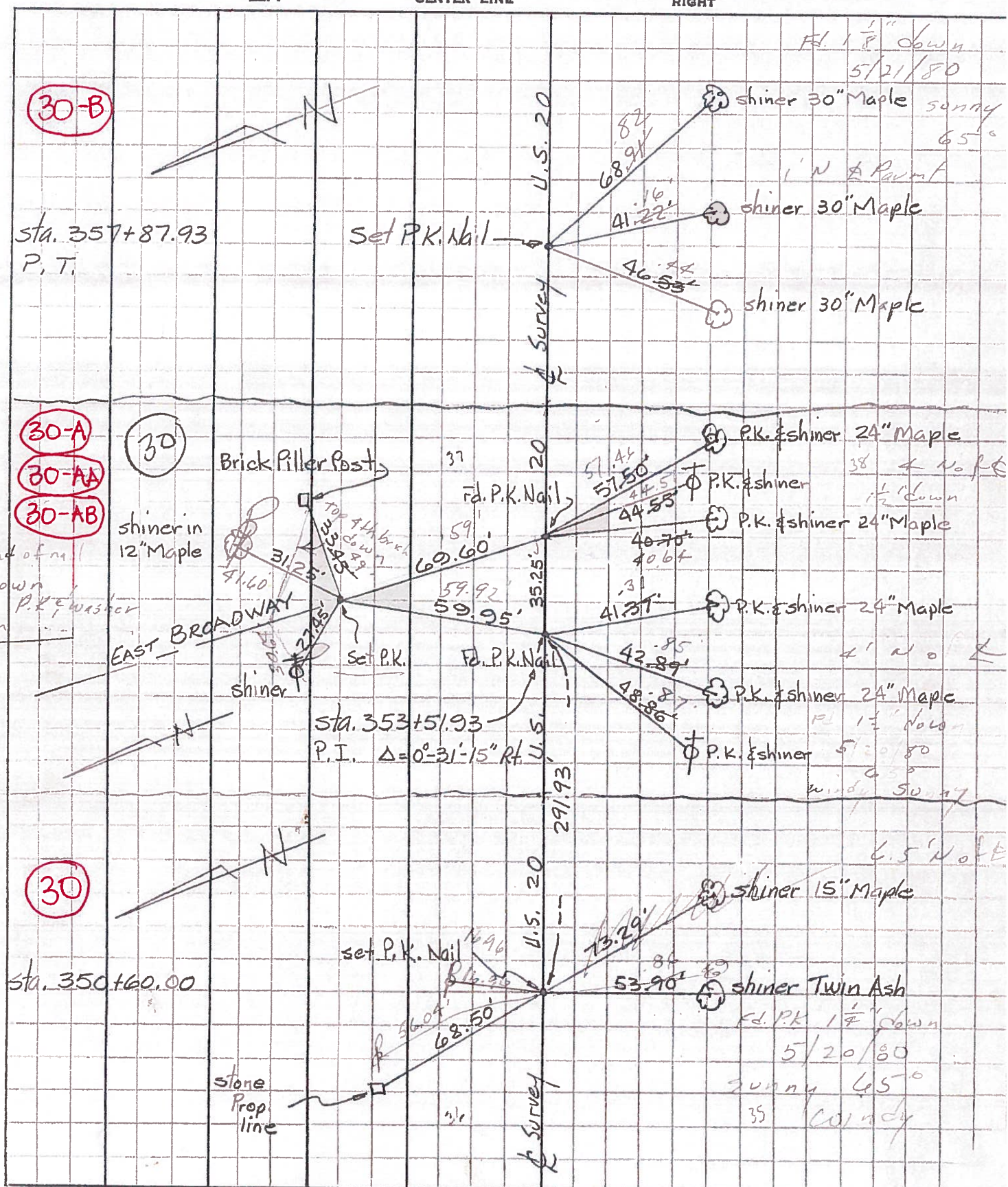




PERSONNEL	TITLE	PERSONNEL	TITLE	COUNTY	DATE
Tomasic		Gancarz		WOOD	Aug. 15, 1977
Neuser				S. R. U.S. 20	Rechecked - Dec-2
Yanyo					WEATHER
Granata				SEC.	TEMP.

DESCRIPTION REF. Control Pts.

JOB NO.





PERSONNEL	TITLE	PERSONNEL	TITLE
Tomsic		Gancarz	
Neuser			
Vanyo			
Granata			

COUNTY WOOD DATE Aug. 15, 1972  
 S. R. U.S. 20 RECHECKED Dec-23  
 SEC. \_\_\_\_\_ WEATHER \_\_\_\_\_  
 TEMP. \_\_\_\_\_

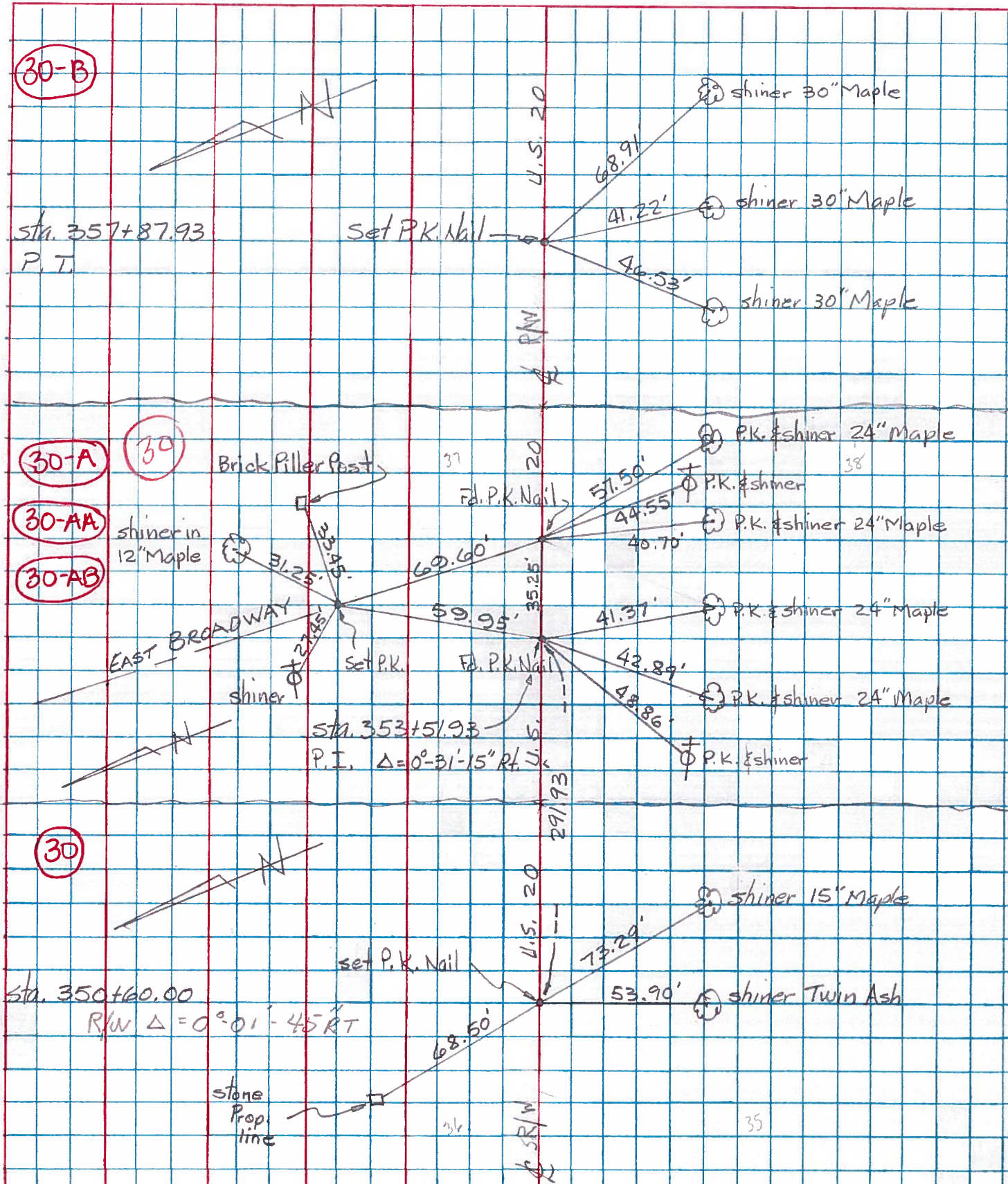
DESCRIPTION REF. Control Pts.

JOB NO. \_\_\_\_\_

LEFT

CENTER LINE

RIGHT



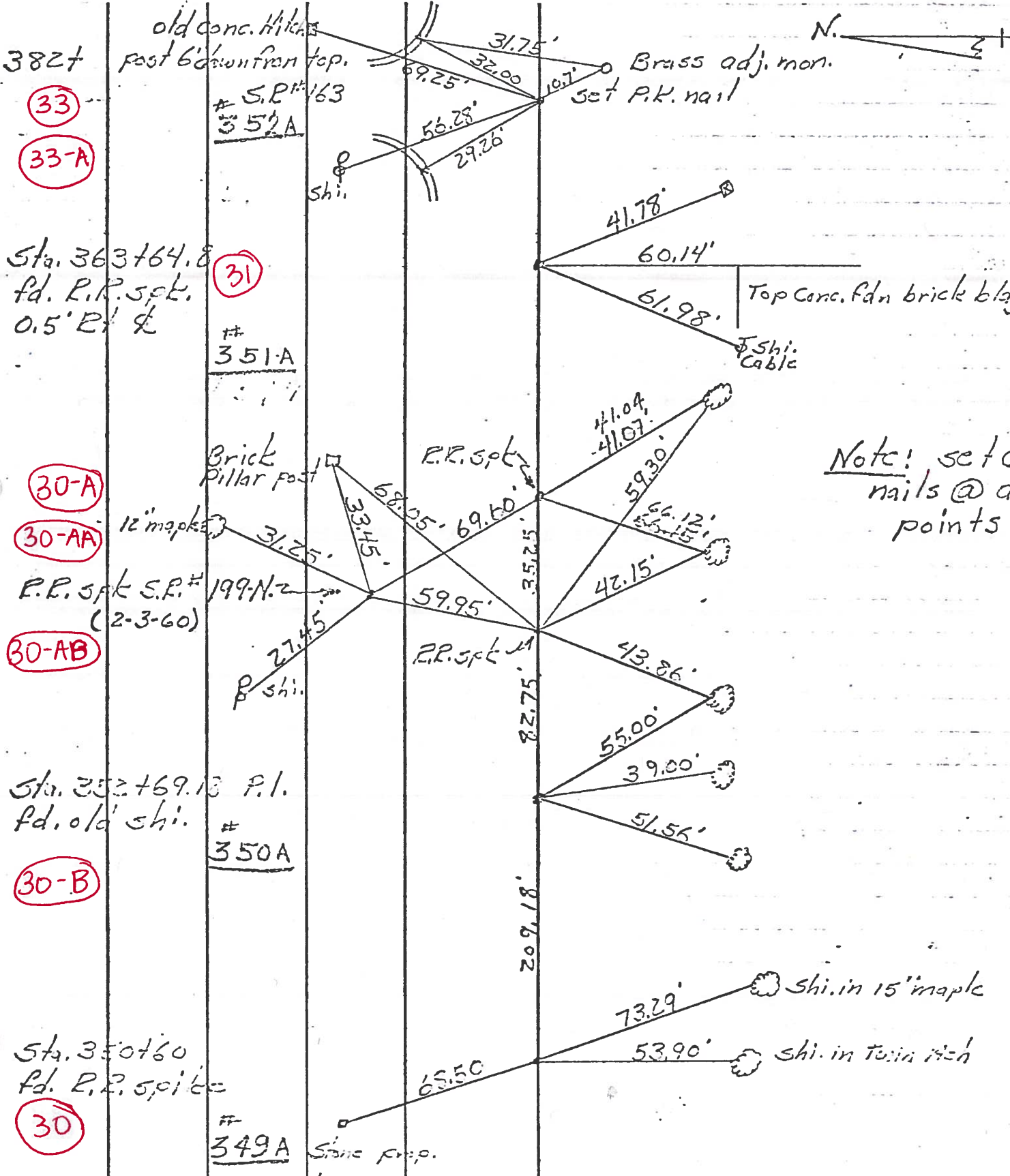
PERSONNEL TITLE PERSONNEL TITLE

COUNTY Wood DATE 3-20-53

S. R. 11.5 #20 WEATHER

SEC. TEMP.

DESCRIPTION Stony Ridge LEFT CENTER LINE RIGHT JOB NO.



Note! set nails @ a points