

O.D.O.T. DISTRICT 2 SURVEY OFFICE (USE ONLY)

PERSONNEL _____ REFERENCE NO. 46 SHEET 5 OF 12
 NOTES LOEHRKE DATE 5/2/96 ROUTE US 20
 H.C. ROUSOS WEATHER FAIR COUNTY WOOD
 R.C. CANTERBURY TEMP. 50° TOWNSHIP TROY
 SECTION RT 65
 DWG BY NIESE PID _____ T 6 N R 12 E

TYPE MONUMENT SM.R.R.SPIKE

ON SURFACE - ~~BELOW~~ ON

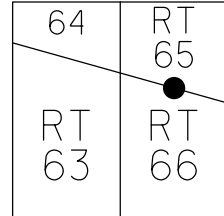
OFFSET Q PAVEMENT 13.1' LT : ~~RT~~

1.3' LT OF LT EDGE PAVEMENT

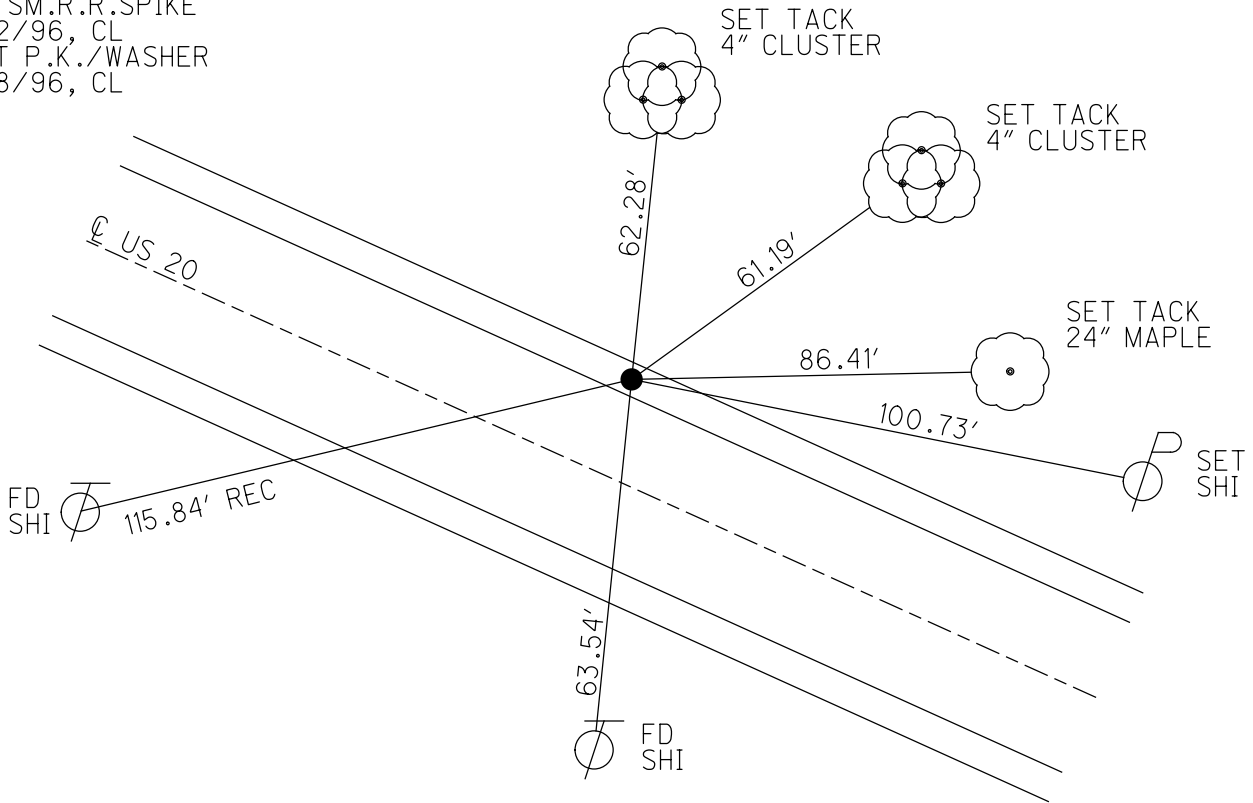
STATION: 655+56

HORIZ.DATUM: _____ GEOID: _____

GRID: NORTHING: _____ EASTING: _____



RECORD: P.O.T.
 STA 655+35.95
 FD SM.R.R.SPIKE
 5/2/96, CL
 SET P.K./WASHER
 7/8/96, CL



O.D.O.T. DISTRICT 2 SURVEY OFFICE

PERSONNEL _____

REFERENCE NO. 46

SHEET 6 OF 13

NOTES LOEHAKE

H.C. ROUSOS

R.C. CANTERBURY

DATE 5/2/96

WEATHER FAIR

TEMP. +50°

ROUTE U.S. 20

COUNTY WOOD

TOWNSHIP TROY

SECTION 14 / R.T. 65, 66

T. 6 N R. 12 E

Set P.R./WASHER

7-8-96
C.L.

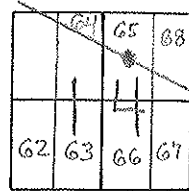
TYPE MONUMENT SM. RR. SPIKE

ON SURFACE - BELOW ON SURFACE

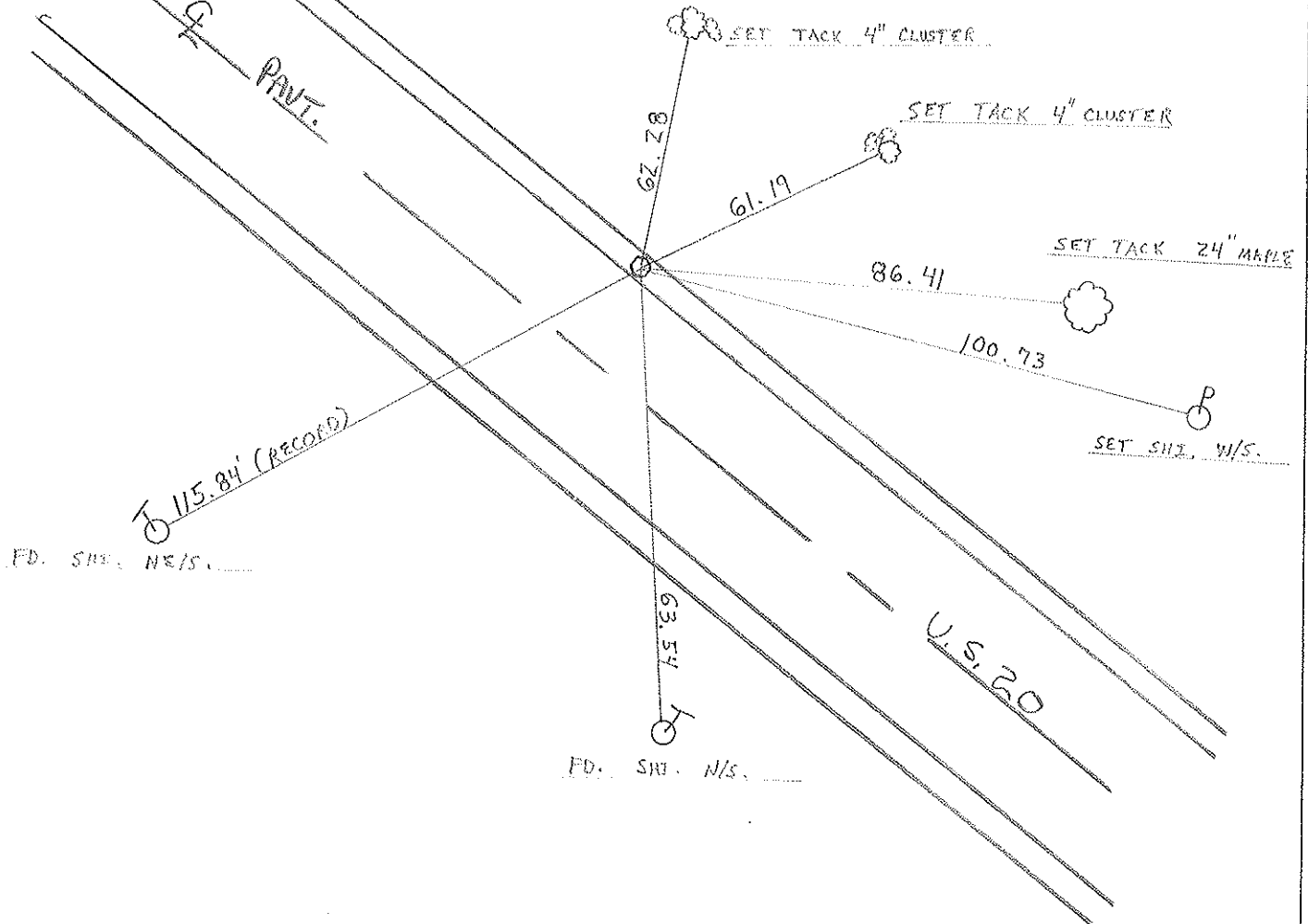
LEFT- & PAVT. - RIGHT 13.1 LT

1.3 LT ^{OF} LT EDGE PAVEMENT

S.L.M. 655+56



RECORD P.O.T.
Sta 655+35.95
Set by Consultants



O.D.O.T. DISTRICT 2 SURVEY OFFICE

PERSONNEL

REFERENCE NO. 46

SHEET OF

NOTES BARNHISEL

H.C. HOFFMAN

R.C. Loehrke

DATE May 21, 1986

WEATHER cloudy

TEMP. +45°

ROUTE U.S. 20

COUNTY WOOD

TOWNSHIP TROY

SECTION R.T. 65.66

(Sec 14)

TYPE MONUMENT IRON Bolt

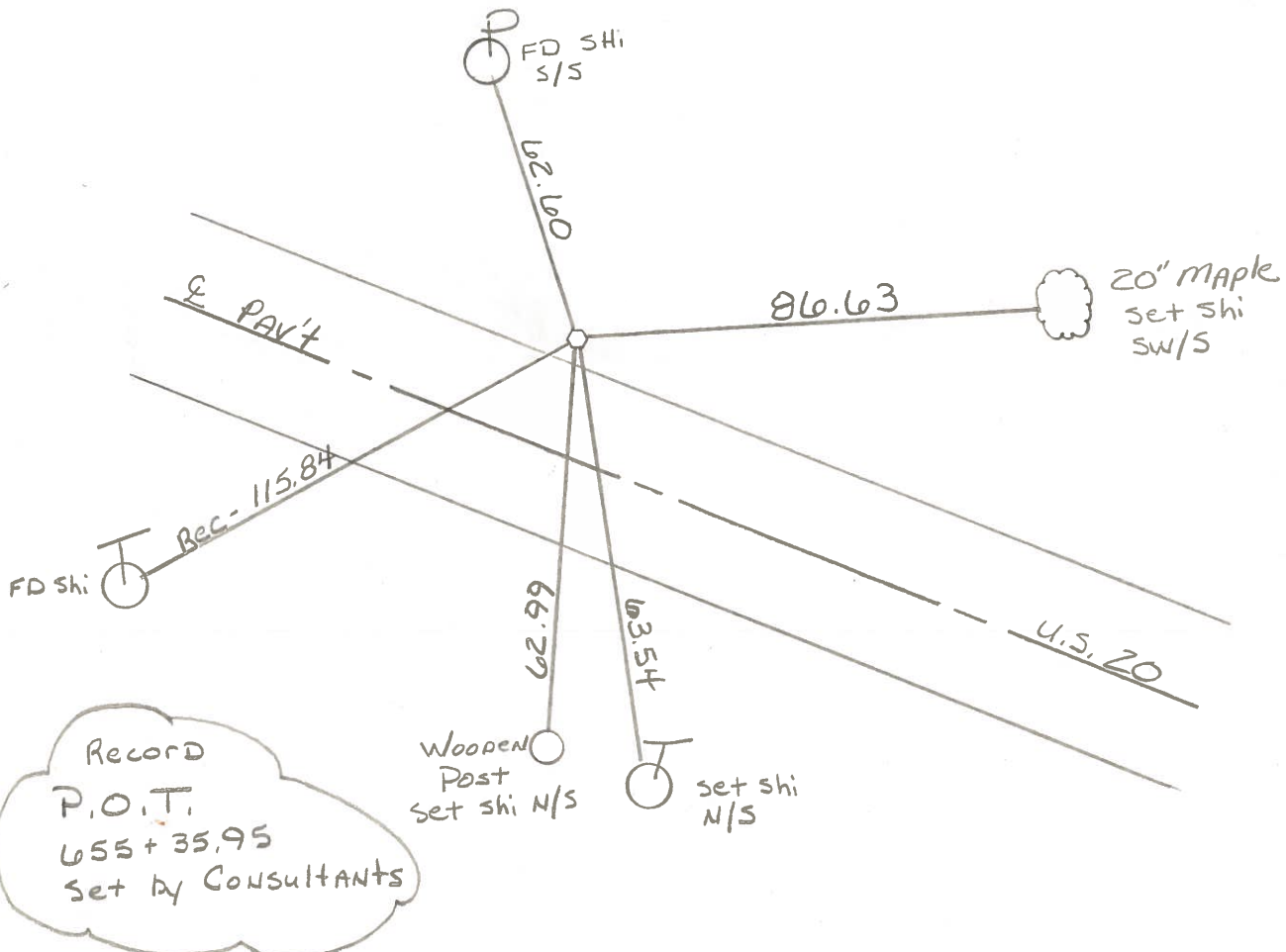
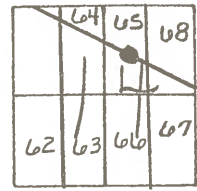
~~ON SURFACE~~ - BELOW 6 1/2 inches

LEFT - PAV'T. - RIGHT 12.7

1.6 L+T0 EDGE PAVEMENT

S.L.M. 655+23

Set Sm RR Spk
6-25-86
mrs



County Wood S.R. U.S. #20

Township Troy

Section 17

T6N, R12E

Personnel CRONIN

RIPPLE

GEYMAN

SCHNEIDER

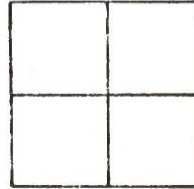
BARBOUR

Date 7/23/80

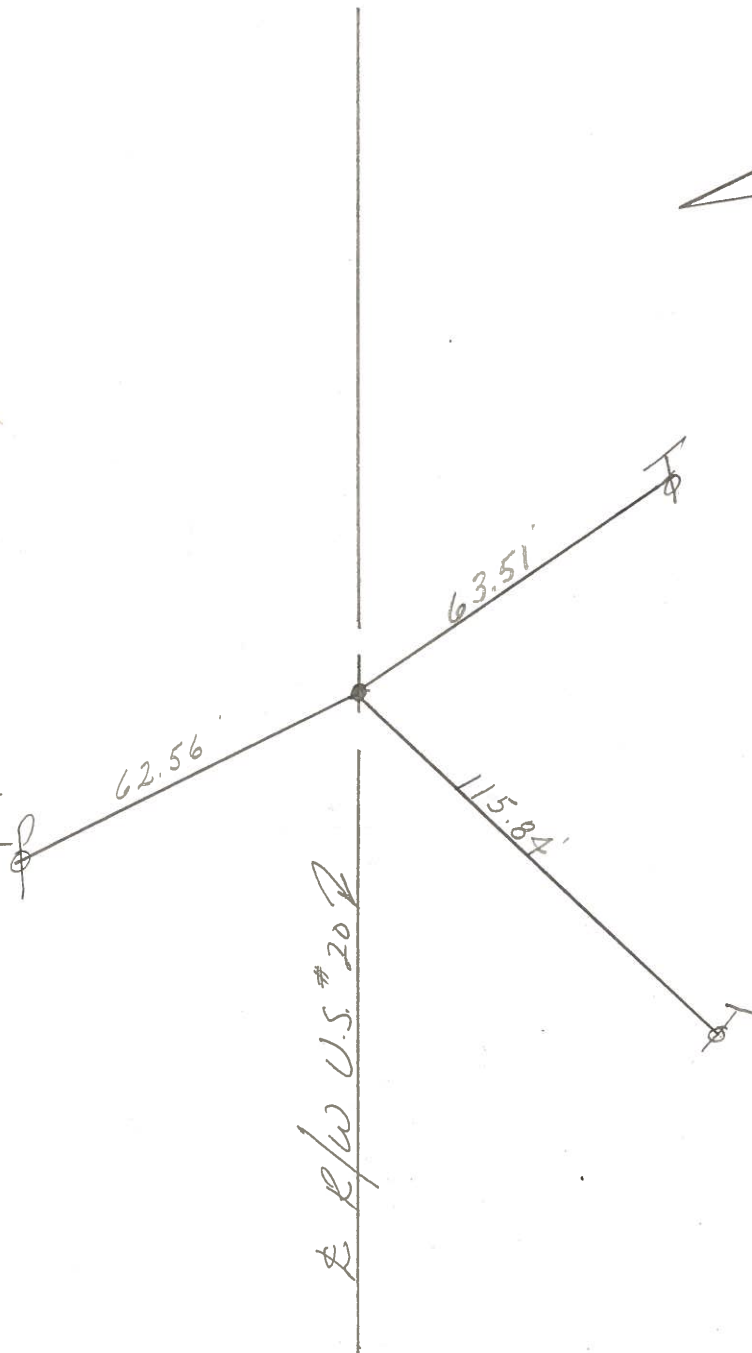
Weather sunny-windy

Temp. 75°

46



P.O.T.
655 + 35.95
Fd iron bolt '4 1/2" below surface. 1.9' North of N. edge of pavement
Set by Consultants



R/W U.S. #20