

O.D.O.T. DISTRICT 2 SURVEY OFFICE (USE ONLY)

PERSONNEL

REFERENCE NO. 1

SHEET 1 OF 46

NOTES RHOADES

DATE 7/15/19

ROUTE US 23

H.C. O'DONNELL

WEATHER SUNNY

COUNTY WOOD

R.C. RHOADES

TEMP. 73°

TOWNSHIP PERRY

SECTION 36

DWG BY NIESE PID 105306

T 3 N R 12 E

TYPE MONUMENT MAG/WASHER

ON SURFACE - ~~BELOW~~ ON

OFFSET \varnothing PAVEMENT 0.3' ~~LT~~ : RT

22.2' TO LT EDGE PAVEMENT

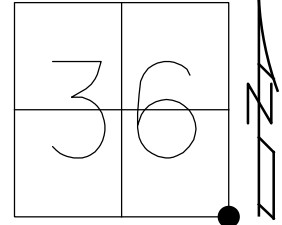
STATION: 0+00

HORIZ.DATUM: NAD83(2011)

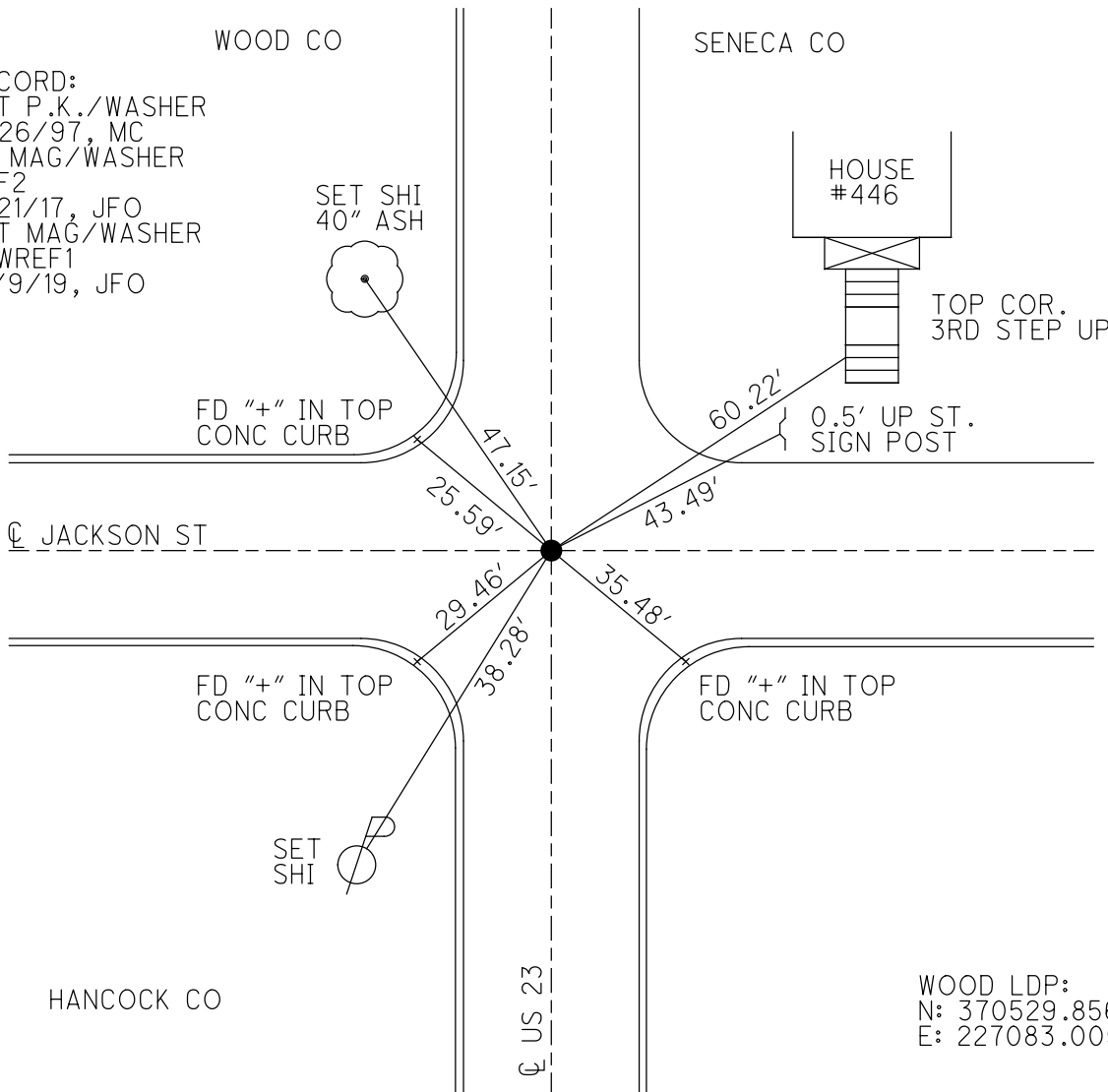
GEOID: 18

GRID: NORTHING: 548870.269

EASTING: 1714945.051



RECORD:
SET P.K./WASHER
11/26/97, MC
FD MAG/WASHER
REF2
7/21/17, JFO
SET MAG/WASHER
NEWREF1
10/9/19, JFO



WOOD LDP:
N: 370529.856
E: 227083.005

O.D.O.T. DISTRICT 2 SURVEY OFFICE (USE ONLY)

PERSONNEL

REFERENCE NO. 1

SHEET 1 OF 3

NOTES RHOADES

DATE 7/15/19

ROUTE US 23

H.C. O'DONNELL

WEATHER SUNNY

COUNTY WOOD

R.C. RHOADES

TEMP. 73°

TOWNSHIP PERRY

DWG BY NIESE

PID 105306

SECTION 36

T 3 N R 12 E

TYPE MONUMENT MAG/WASHER

ON SURFACE - ~~BELOW~~ ON

OFFSET \varnothing PAVEMENT 0.3' ~~RT~~ : RT

22.2' TO LT EDGE PAVEMENT

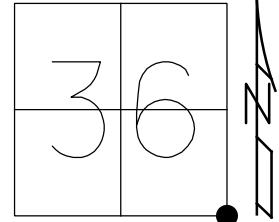
STATION: 0+00

HORZ.DATUM: NAD83(2011)

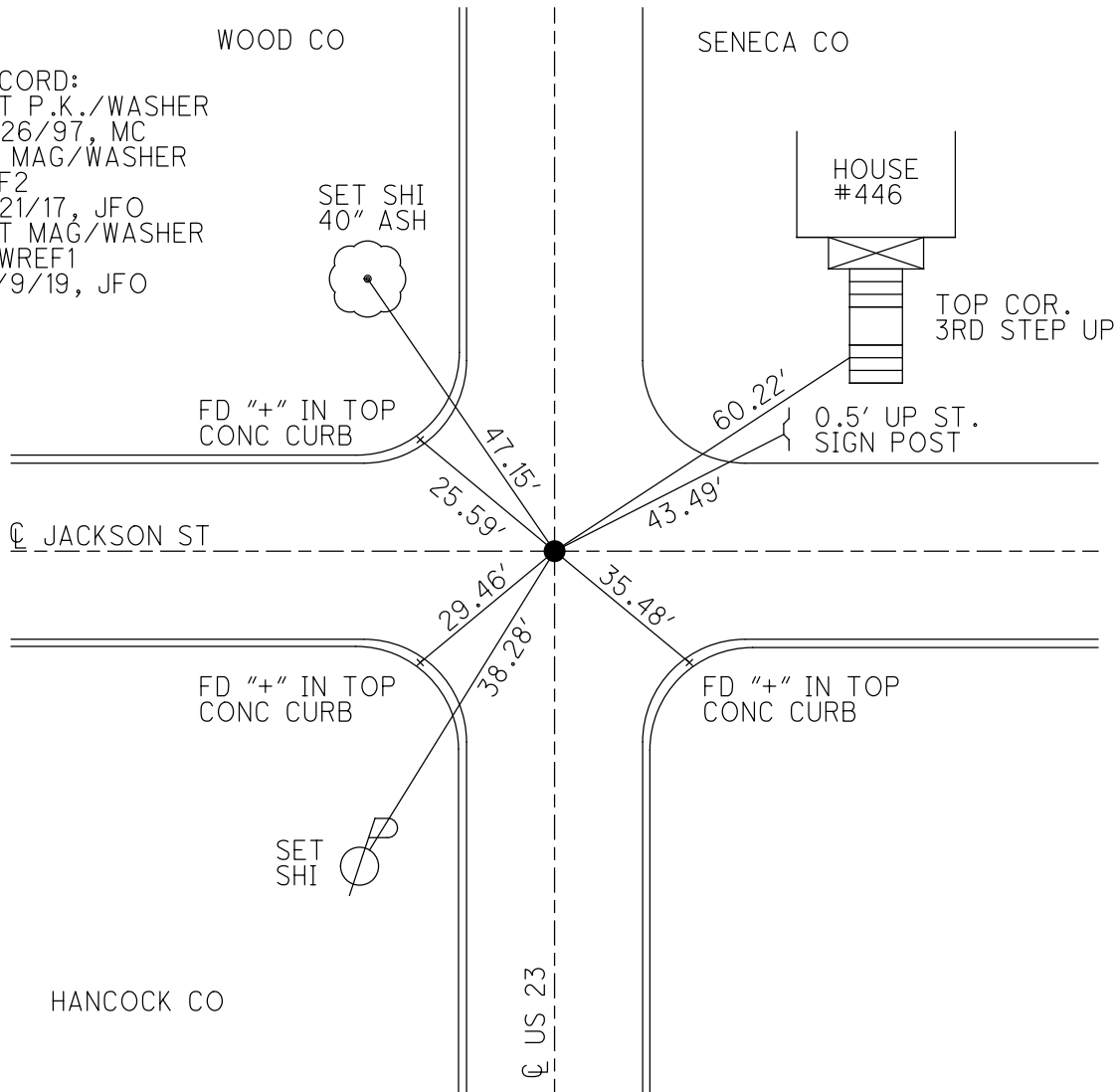
GEOID: 2012A

GRID: NORTHING: 548870.269

EASTING: 1714945.051



RECORD:
SET P.K./WASHER
11/26/97, MC
FD MAG/WASHER
REF2
7/21/17, JFO
SET MAG/WASHER
NEWREF1
10/9/19, JFO



HANCOCK CO

O.D.O.T. DISTRICT 2 SURVEY OFFICE

PERSONNEL

REFERENCE NO. 1

SHEET 2 OF 4
U.S. 23 - S.R. 199

NOTES BARNHISEL

H.C. CANTERBURY

R.C. WEAVER

Rousso

DRAWN BY Rousso

DATE 7-10-97

WEATHER SUNNY

TEMP. +70

ROUTE SR 199

COUNTY SENECA/WOOD

TOWNSHIP _____

SECTION _____

T _____ R _____

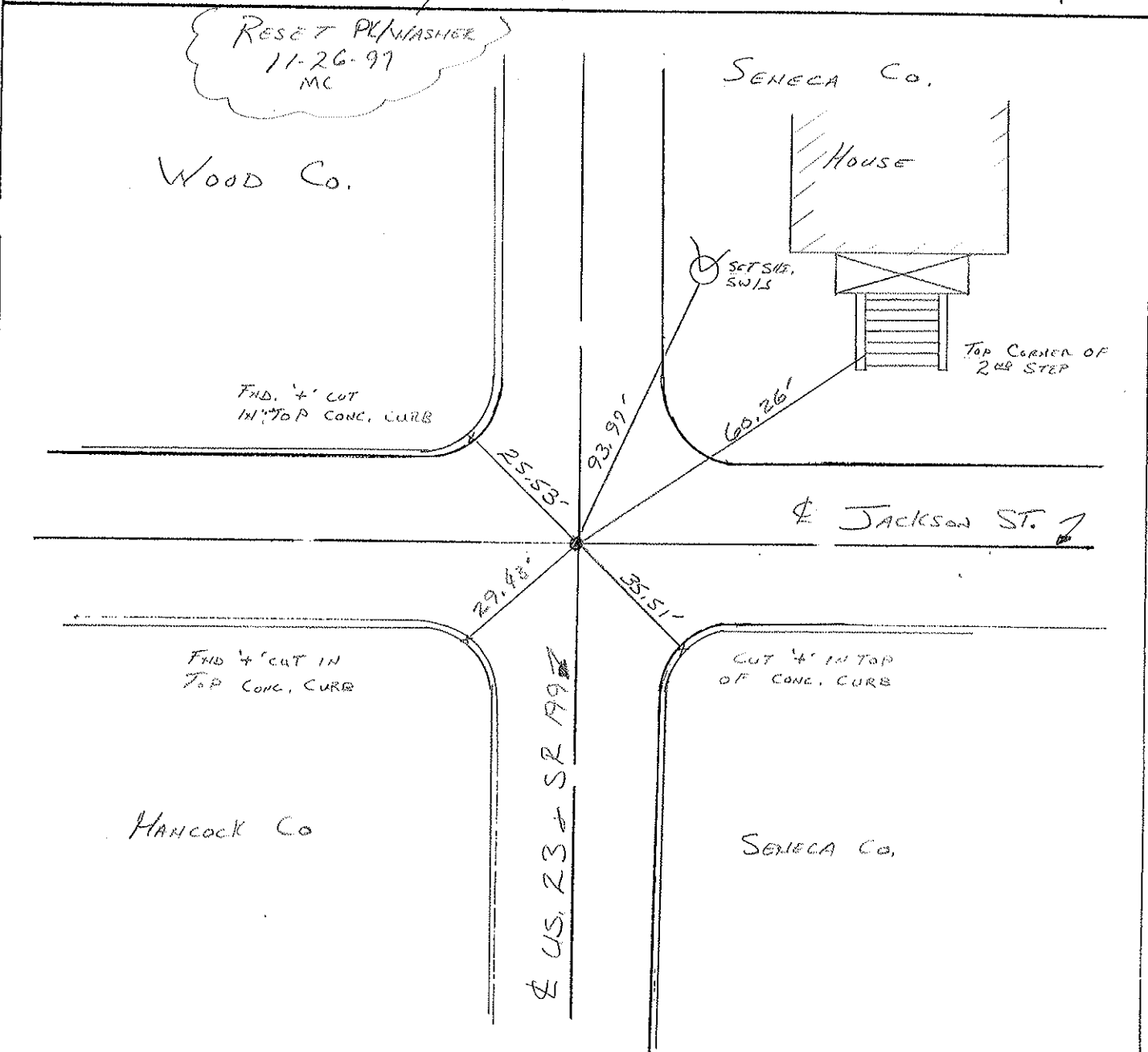
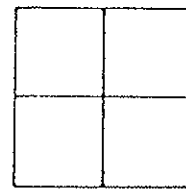
TYPE MONUMENT BRASS MON

ON SURFACE - BELOW 5"

~~LEFT - & PAV'T. - RIGHT - & PAV'T.~~

22.2 TO LT EDGE PAVEMENT

S.L.M. 21 + 467 SENECA Co. / 0.000 Wood Co.



O.D.O.T. DISTRICT 2 SURVEY OFFICE

Sht. 2 of 6
U.S. 23-S.R. 199

County SENECA - WOOD - HANCOCK

Date 7-20-78

Township _____

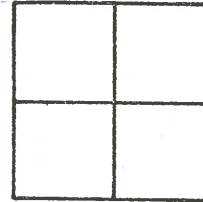
Weather CLEAR

Section _____

Temp. +92°

T N, R E

Personnel BURNSIDE



BOWERS

KNAPE

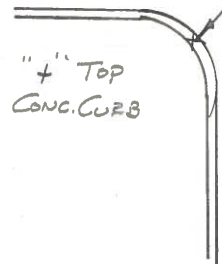
MEAD

WOOD COUNTY

SENECA COUNTY

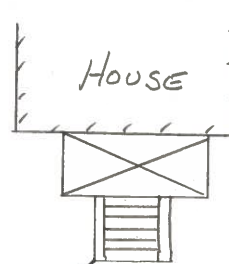
FD. ADJ. BRASS MON.
1 1/2" DEEP

#1



S.R. 199

U.S. 23 E



NEAR COR BRICK WALL
@ TOP OF BOTTOM STEP
LEVEL

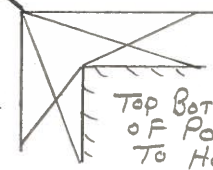
64.23'

25.41'

29.49'

56.97'

JACKSON STREET



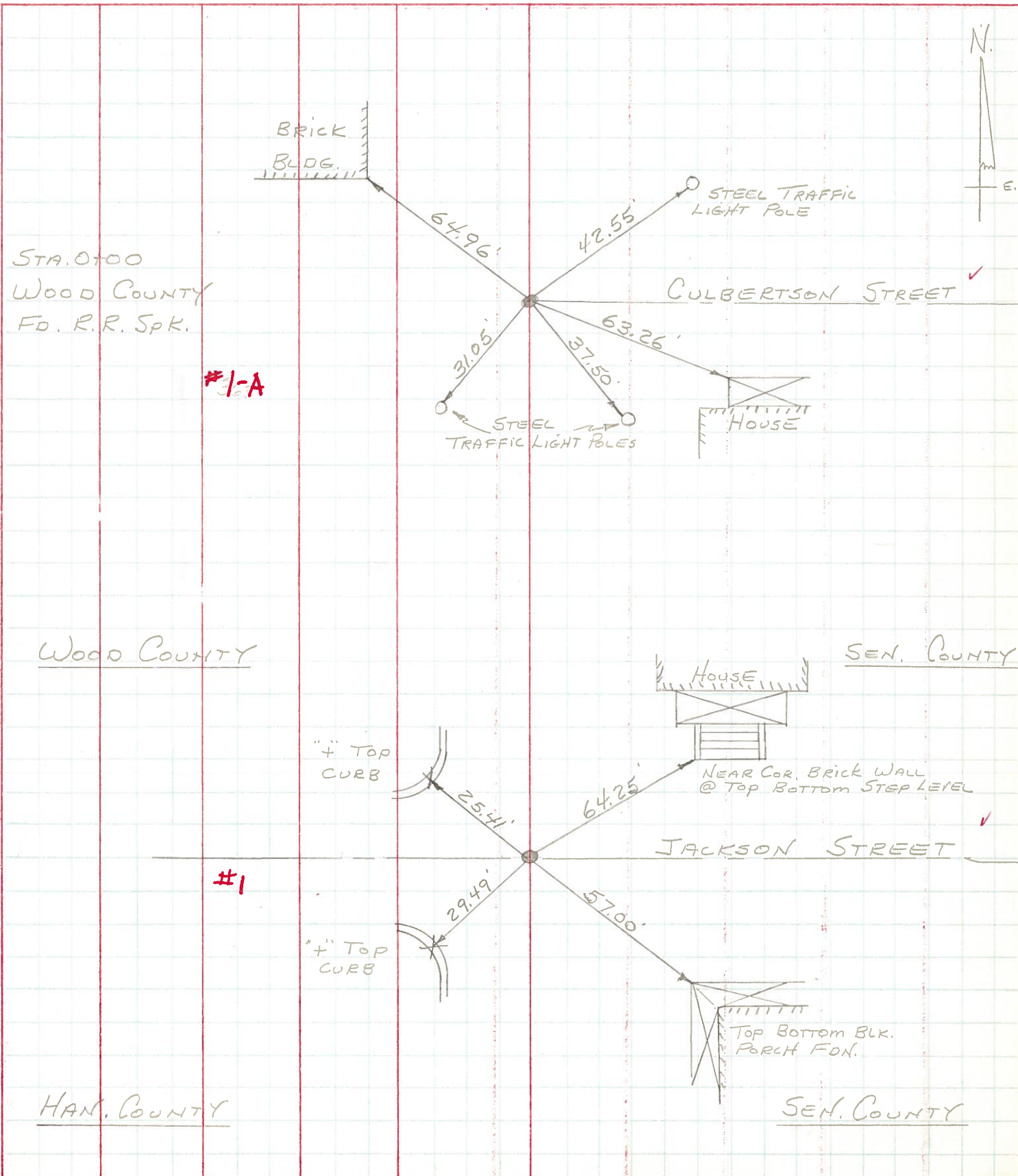
TOP BOTTOM BLK.
OF PORCH FDN.
TO HO.

HANCOCK COUNTY

SENECA COUNTY

PERSONNEL TITLE PERSONNEL TITLE COUNTY WOOD DATE OK-7-21-70
CK. BY _____
MORRISON _____
BOWERS _____ S. R. U.S. #23 WEATHER _____
HOLCOMBE _____ SEC. FOSTORIA CORP. TEMP. _____

DESCRIPTION CONTROL TIES LEFT CENTER LINE RIGHT JOB NO. _____



PERSONNEL TITLE PERSONNEL TITLE

Morrison _____

COUNTY Sen-Han-Wood DATE Sept. 4 1968

Bowers _____

S. R. #199 & US #23 WEATHER Clear.

Holcombe _____

SEC. Fostoria TEMP. +75°

DESCRIPTION: Ties to Control Points. JOB NO. _____

LEFT

CENTER LINE

RIGHT

