

O.D.O.T. DISTRICT 2 SURVEY OFFICE (USE ONLY)

PERSONNEL

REFERENCE NO. 1 A

SHEET 3 OF 3

NOTES BARNHISEL

DATE 7/10/97

ROUTE US 23

H.C. CANTERBURY

WEATHER SUNNY

COUNTY WOOD

R.C. WEAVER  
ROUSOS

TEMP. 70°

TOWNSHIP PERRY

DWG BY NIESE PID 105306

SECTION 36

T 3 N R 12 E

TYPE MONUMENT BOLT SPIKE

~~ON SURFACE~~ - BELOW 2"

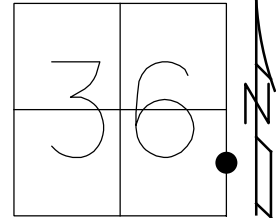
OFFSET  $\bar{C}$  PAVEMENT ON, 4' S OF  $\bar{C}$  E LT : RT

21.8' TO LT EDGE PAVEMENT

STATION: 13+30.71

HORZ.DATUM: - GEOID: -

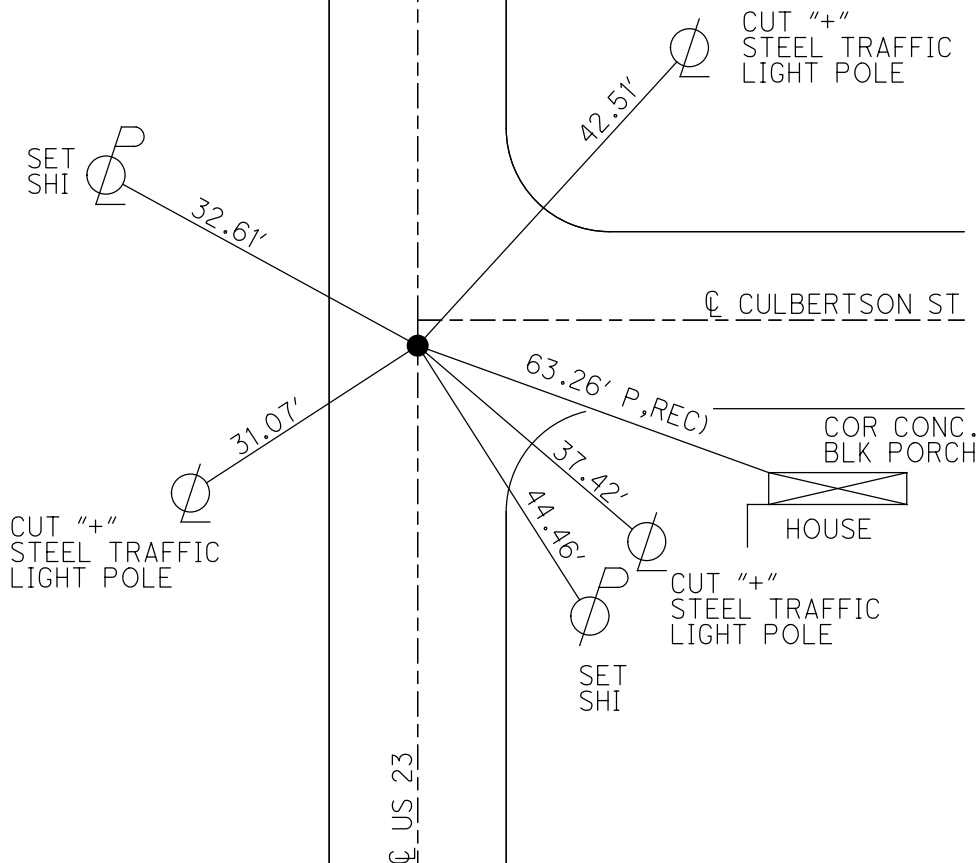
GRID: NORTHING: - EASTING: -



WOOD CO

SENECA CO

RECORD:  
FD NAIL  
7/21/78  
SET P.K./WASHER  
11/26/97, MB  
DNF  
7/21/17



# O.D.O.T. DISTRICT 2 SURVEY OFFICE

PERSONNEL

REFERENCE NO. 1-A

SHEET 4 OF 4  
U.S. 23 - S.R. 199

NOTES Barnhisel

H.C. CATHERBURY

DATE 7-10-97

ROUTE US 23 + SR 199

R.C. WEAVER

WEATHER SUNNY

COUNTY WOOD / SENECA

Rausas

TEMP. +70

TOWNSHIP \_\_\_\_\_

Drawn By Rausas

SECTION \_\_\_\_\_

T \_\_\_\_\_ R \_\_\_\_\_

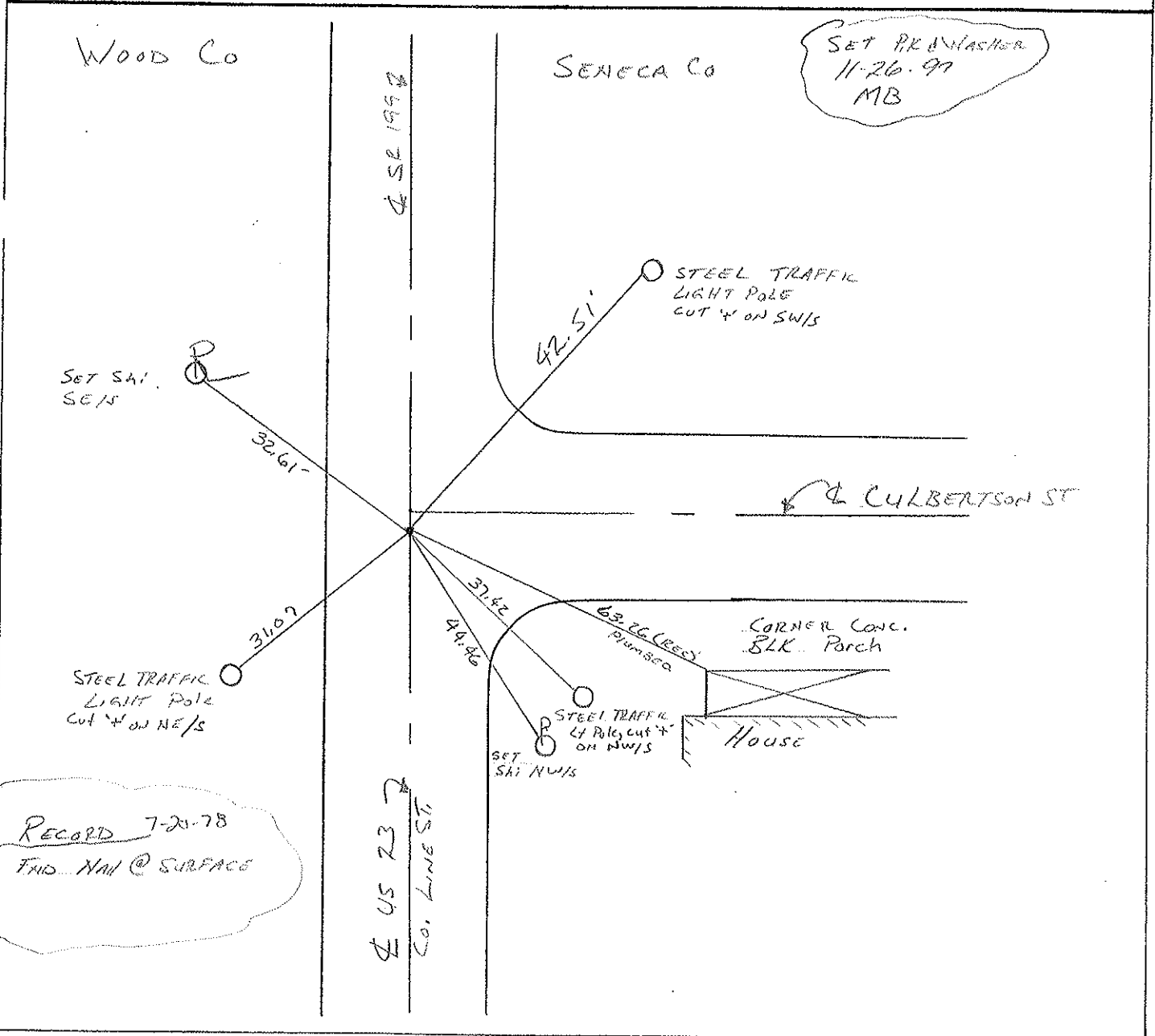
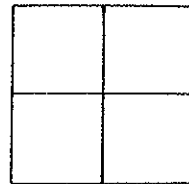
TYPE MONUMENT Bolt Spike

ON ~~SURFACE~~ - BELOW 2" Below

LEFT-☉ PAV'T. - RIGHT 4' S of E ☉

21.8 TO Lt EDGE PAVEMENT

S.L.M. 0 + 405.6



O.D.O.T. DISTRICT 2 SURVEY OFFICE

Sht. 4 of 6

U.S. 23-S.R.199

County SENECA-WOOD

Date 7-20-78

Township \_\_\_\_\_

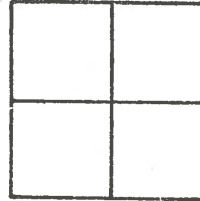
Weather CLEAR

Section \_\_\_\_\_

Temp. +92°

T N, R E

Personnel BURNSIDE



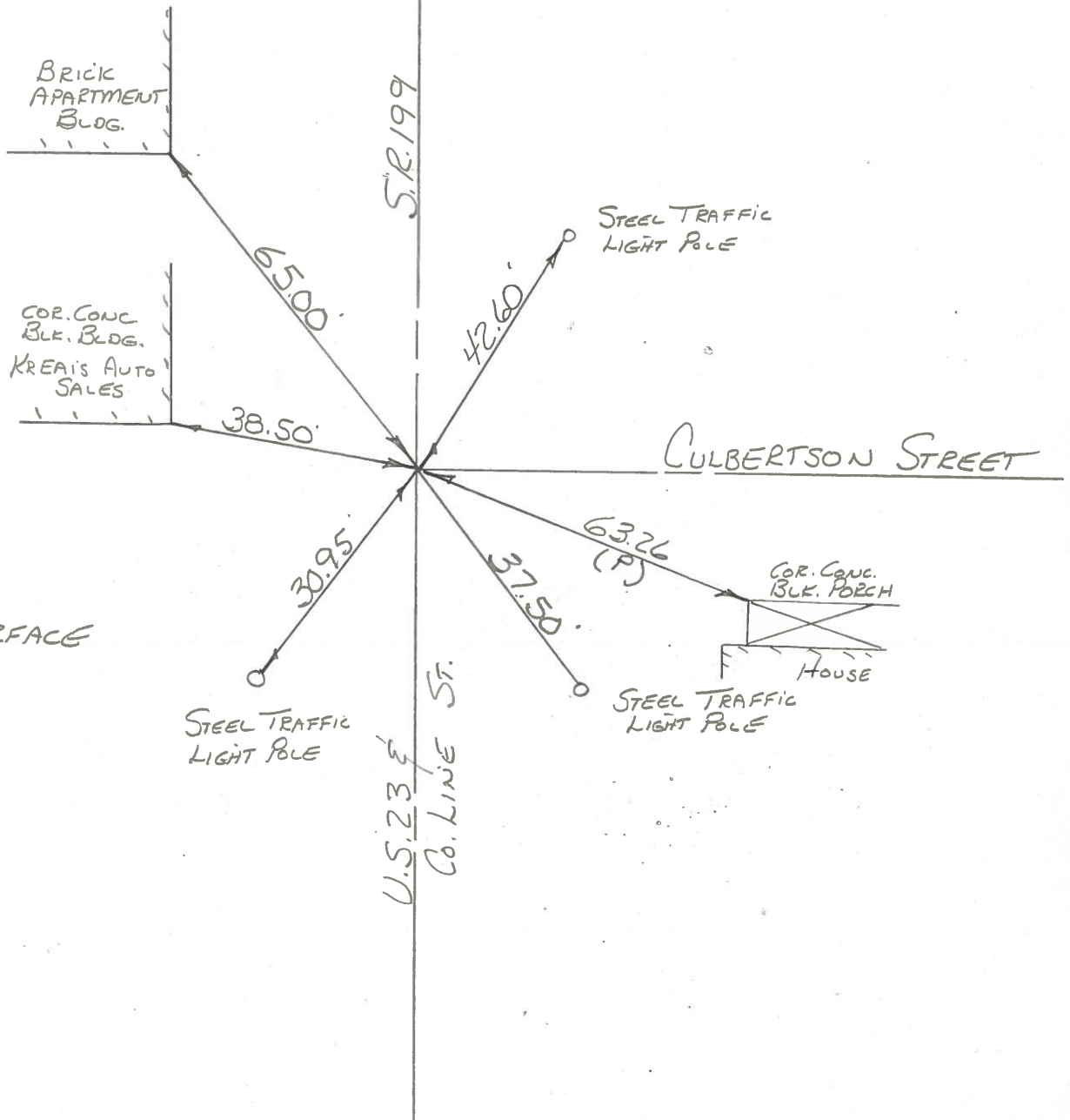
BOWERS

KNAPE

MEAD

WOOD COUNTY

#1-A SENECA COUNTY



FD. NAIL @ SURFACE

PERSONNEL TITLE PERSONNEL TITLE

CK. BY

COUNTY WOOD

DATE OK-7-21-70

MORRISON

S. R. U.S. #23

WEATHER

BOWERS

SEC. FOSTORIA CORP.

TEMP.

HOLCOMBE

DESCRIPTION

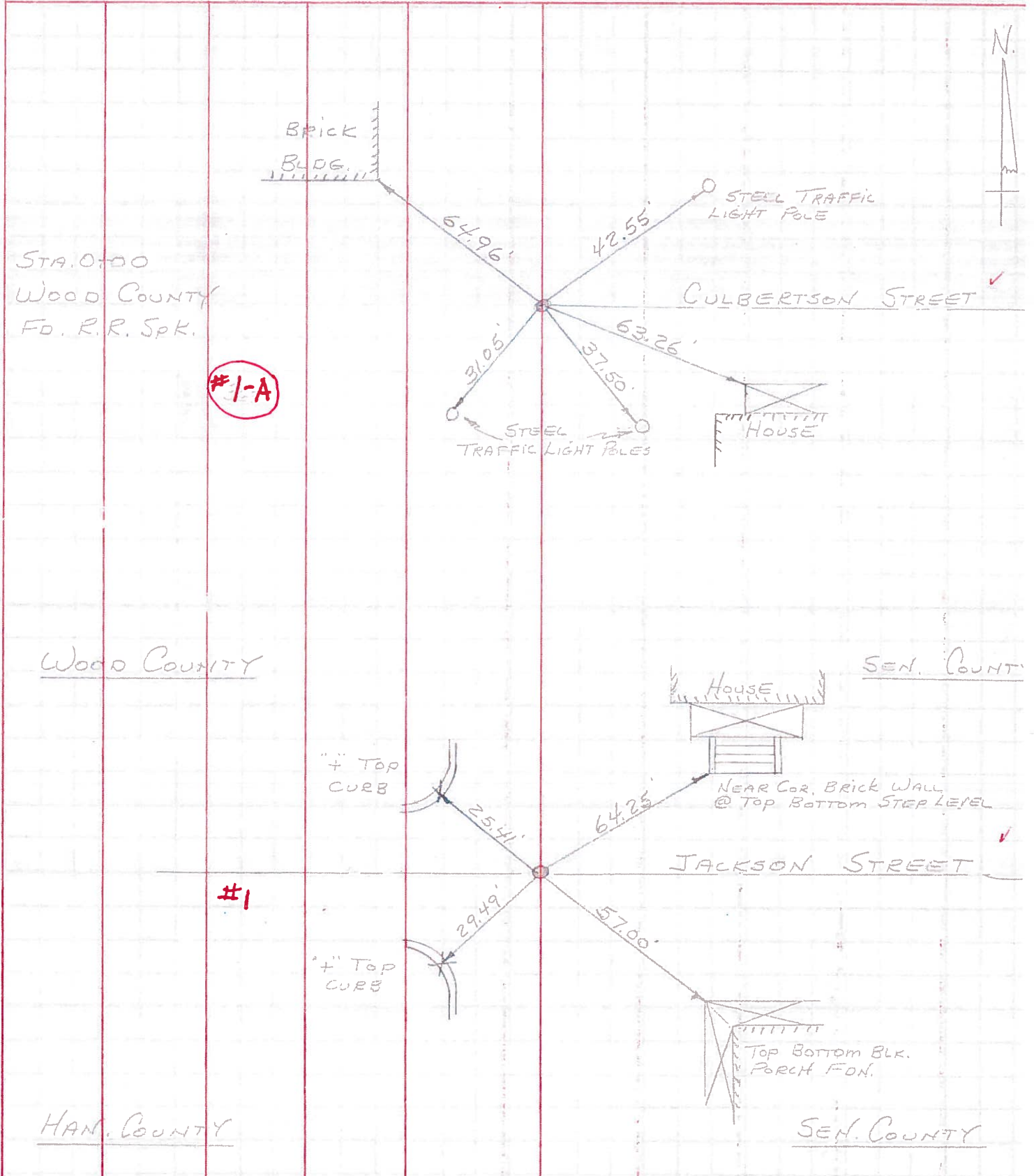
CONTROL TIES

JOB NO.

LEFT

CENTER LINE

RIGHT





PERSONNEL TITLE PERSONNEL TITLE

COUNTY Wood

DATE 05-9-23-57

S. R. #199

WEATHER 2-7-64

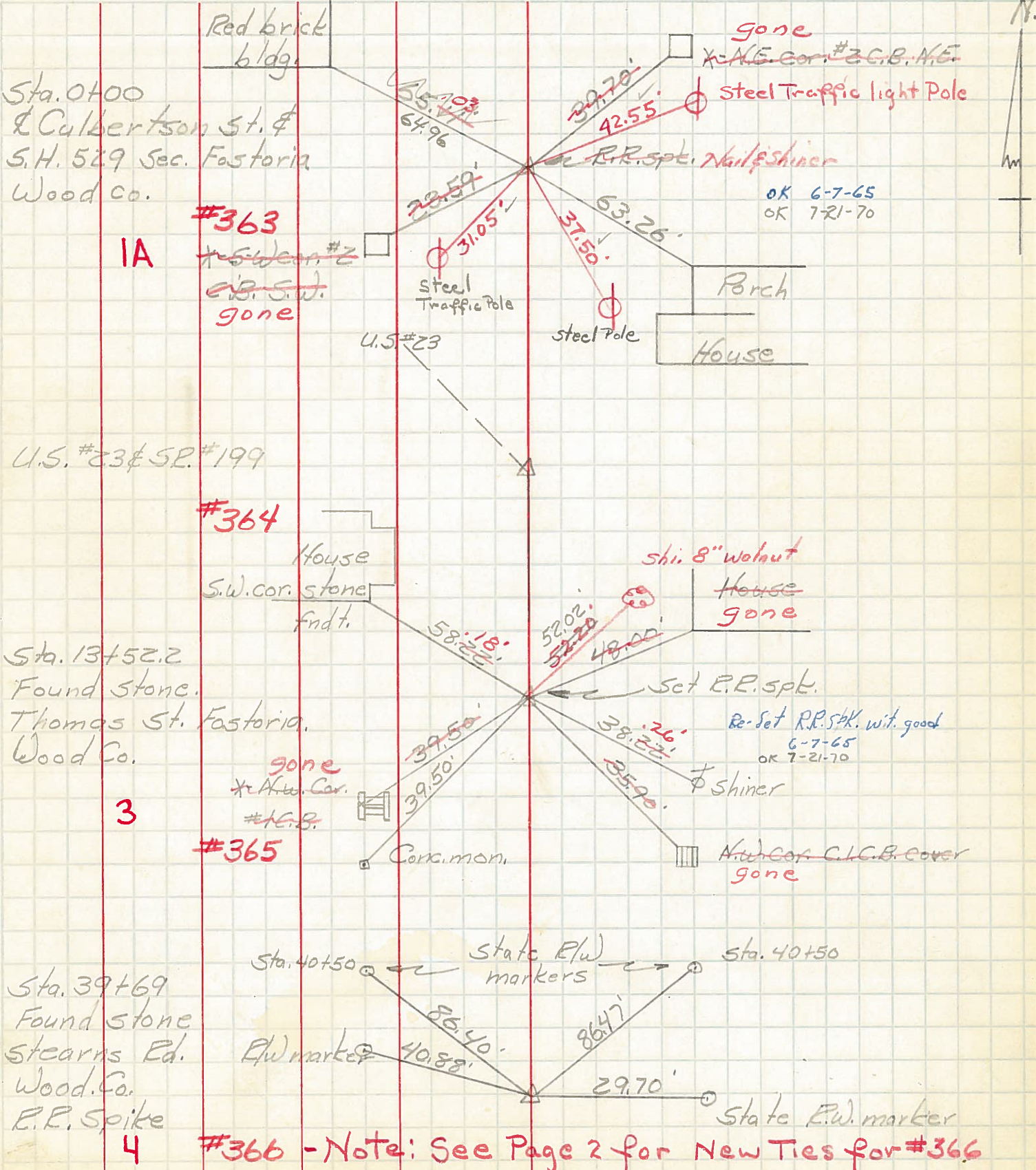
SEC. A

TEMP.

DESCRIPTION From Culbertson St. Fostoria, North S.R. 199

JOB NO.

LEFT CENTER LINE RIGHT



#366 - Note: See Page 2 for New Ties for #366