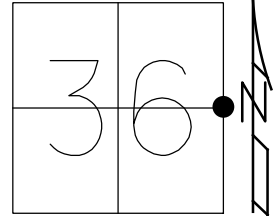


O.D.O.T. DISTRICT 2 SURVEY OFFICE (USE ONLY)

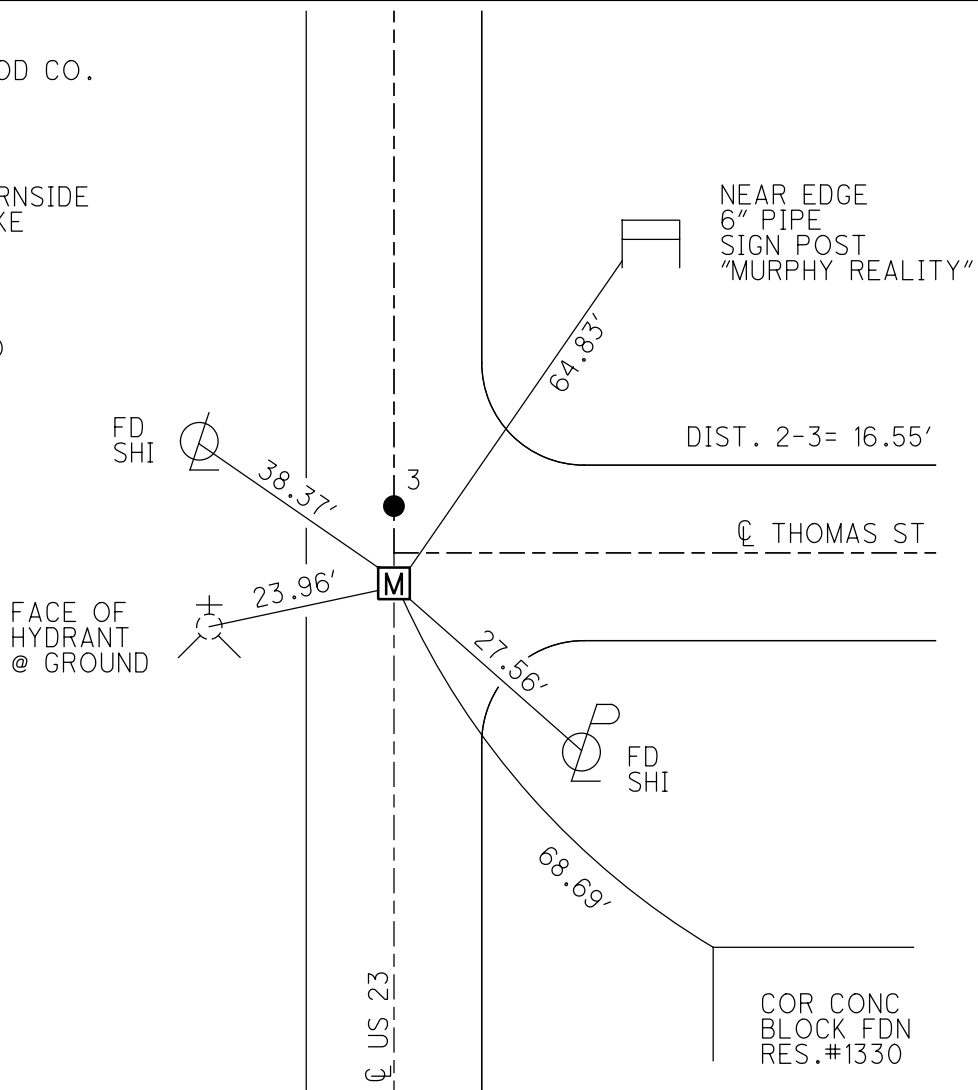
PERSONNEL \_\_\_\_\_ REFERENCE NO. 2 SHEET 4 OF 5  
 NOTES BURNSIDE DATE 7/21/78 ROUTE US 23  
 H.C. BOWERS WEATHER CLEAR COUNTY WOOD  
 R.C. KNAPE TEMP. 88° TOWNSHIP PERRY  
 \_\_\_\_\_ CURTIS \_\_\_\_\_ SECTION 36  
 DWG BY RHOADES PID 92134 T 3 N R 12 E

TYPE MONUMENT 1" IPIPE  
~~ON SURFACE~~ - BELOW 5"  
 OFFSET  $\odot$  PAVEMENT ON \_\_\_\_\_ LT : RT  
 \_\_\_\_\_ TO \_\_\_\_\_ EDGE PAVEMENT  
 STATION: 26+84.31



HORZ. DATUM: NAD83 2011 GEOID: 2012A  
 GRID: NORTHING: 550527.499 EASTING: 1714983.113

RECORD: WOOD CO.  
 E $\frac{1}{4}$  POST  
 SEC 36  
 FD 1" IPIPE  
 5" DOWN  
 7/21/78, BURNSIDE  
 SET R.R. SPIKE  
 7/21/78  
 FD MONBOX  
 W/ 1" IPIN  
 REF2  
 8/16/17, JFO



PERSONNEL TITLE PERSONNEL TITLE  
BURNSIDE \_\_\_\_\_  
SMITH \_\_\_\_\_  
BOWERS \_\_\_\_\_

COUNTY WOOD-SENECA DATE 11-23-71  
 S. R. U.S. 23 WEATHER CLOUDY  
 SEC. 36 TEMP. +30

DESCRIPTION LEFT CENTER LINE RIGHT JOB NO. \_\_\_\_\_

