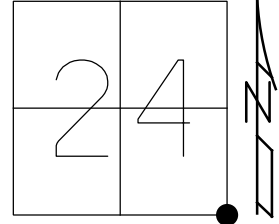


O.D.O.T. DISTRICT 2 SURVEY OFFICE (USE ONLY)

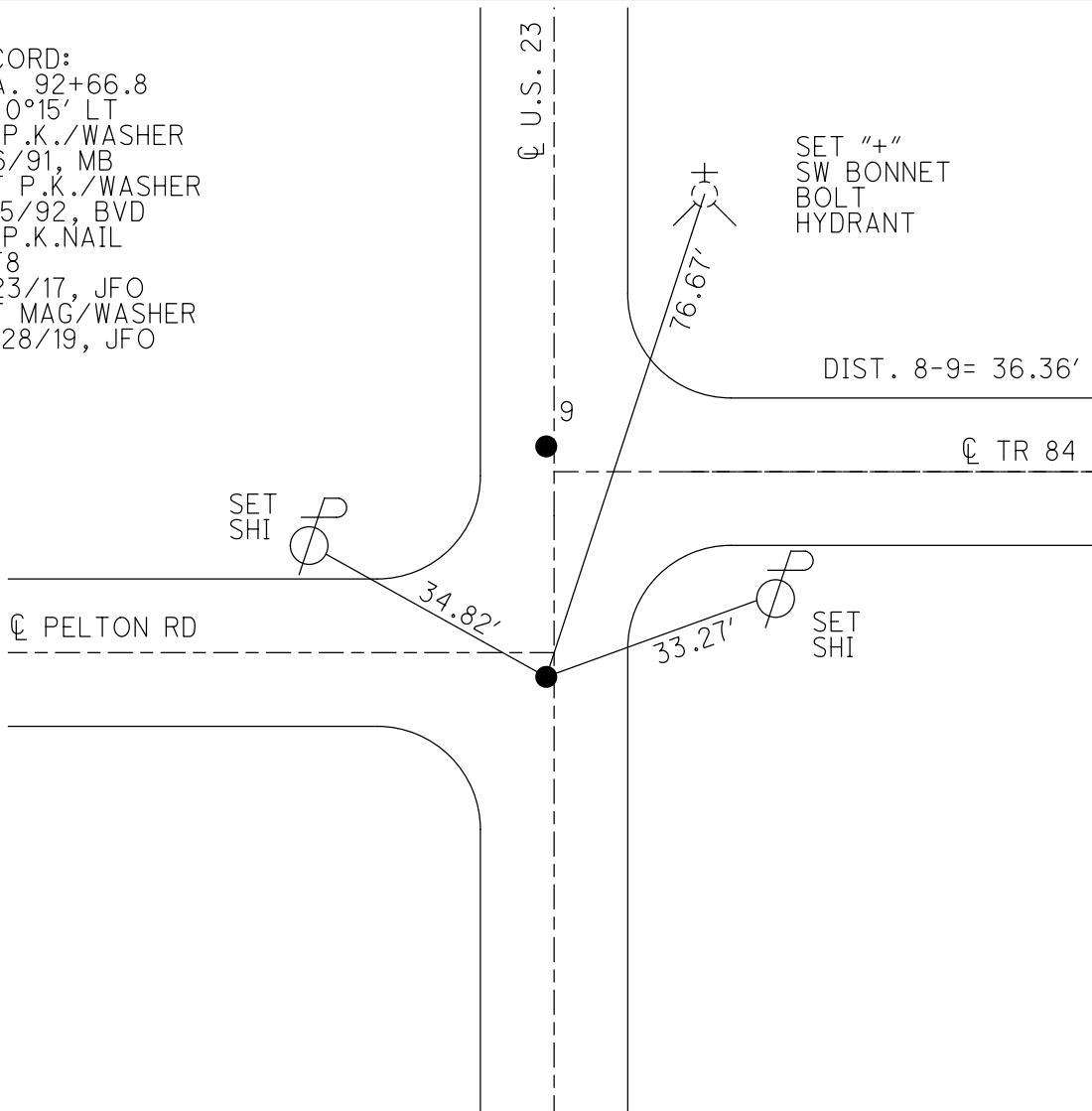
PERSONNEL _____ REFERENCE NO. 8 SHEET 5 OF 22
 NOTES MILLER DATE 5/6/19 ROUTE US 23
 H.C. O'DONNELL WEATHER SUNNY COUNTY WOOD
 R.C. MILLER TEMP. 71° TOWNSHIP PERRY
 SECTION 24
 DWG BY BALBAUGH PID 92134 T 3 N R 12 E

TYPE MONUMENT P.K.NAIL
 ON SURFACE - ~~BELOW~~ ON
 OFFSET Q PAVEMENT 1.5' LT : ~~RT~~
14.2' TO RT EDGE PAVEMENT
 STATION: 106+14.11



HORZ. DATUM: NAD83 (2011) GEOID: 2012A
 GRID: NORTHING: 558455.786 EASTING: 1715131.863

RECORD:
 STA. 92+66.8
 $\Delta = 0^\circ 15' \text{ LT}$
 FD P.K./WASHER
 8/6/91, MB
 SET P.K./WASHER
 4/15/92, BVD
 FD P.K.NAIL
 REF8
 8/23/17, JFO
 SET MAG/WASHER
 10/28/19, JFO



O.D.O.T. DISTRICT 2 SURVEY OFFICE

PERSONNEL

REFERENCE NO. 889

SHEET 2 OF 23

NOTES BARNHISEL

H.C. VAN DUSEN

DATE 8-6-91

ROUTE U.S. 23

R.C. KUSZ

WEATHER cloudy

COUNTY WOOD

TEMP. +75°

TOWNSHIP PERRY

SECTION 24

T 3 N R 12 E

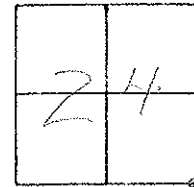
TYPE MONUMENT P.K. NAILS & Washers

ON SURFACE - BELOW BOTH

LEFT - 0 PAV'T. - RIGHT 1.5 1.5

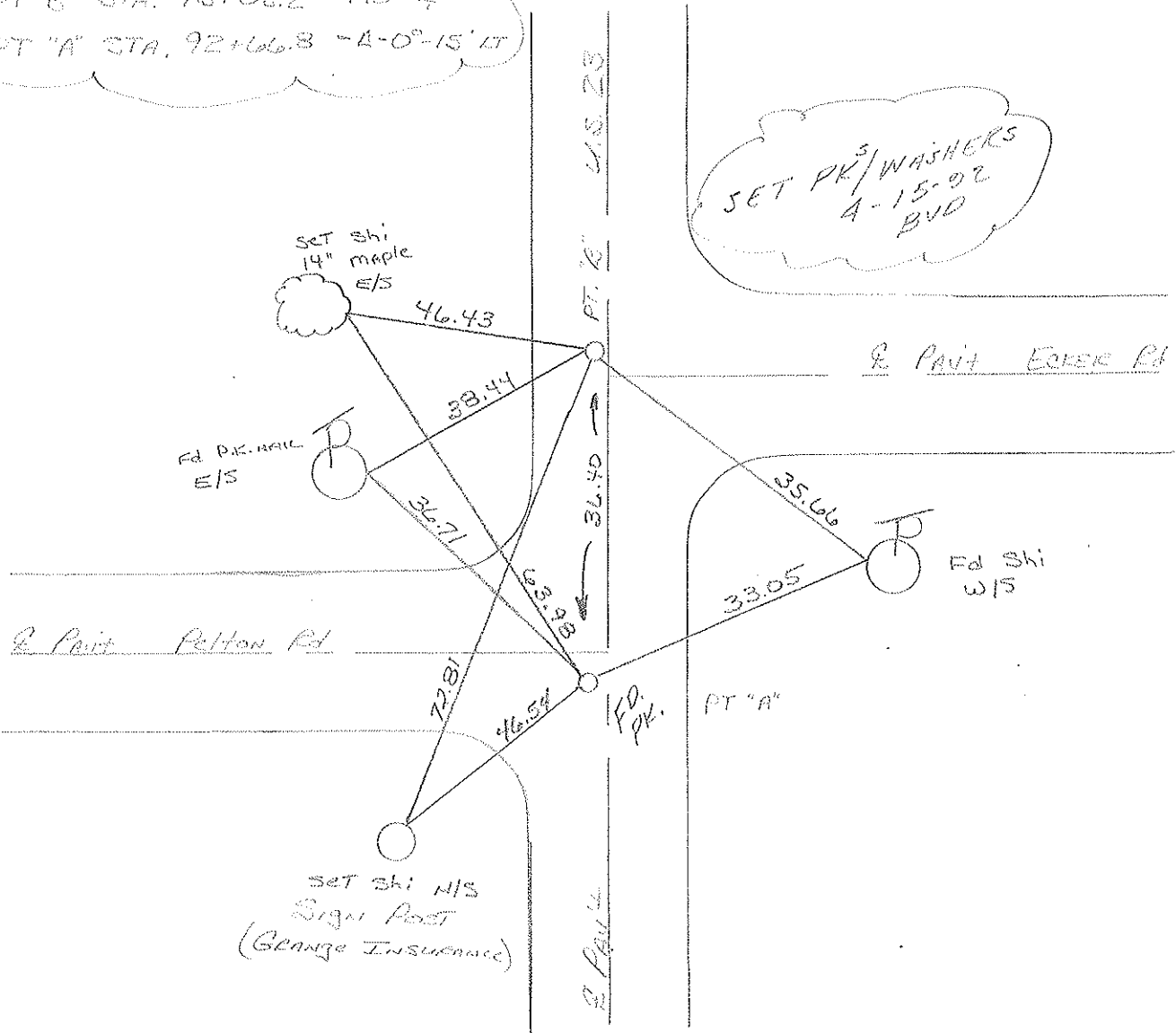
14.2 TO 10.5 RT LT EDGE PAVEMENT

S.L.M. PT "A" 106+31



(Record)
 PT "B" STA. 93+02.2 NO X
 PT "A" STA. 92+66.8 -A-0°-15' LT

SET PK^s/WASHERS
 4-15-92
 BVD



O.D.O.T. DISTRICT 2 SURVEY OFFICE

SHEET

OF

County Wood S.R. U.S. 23

Date 7-28-81

Township Perry

Weather RAIN

Section 24

Temp. +70°

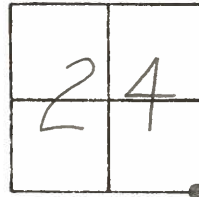
T3N, R12E

Personnel HOFFMAN

Loehrke

Householder

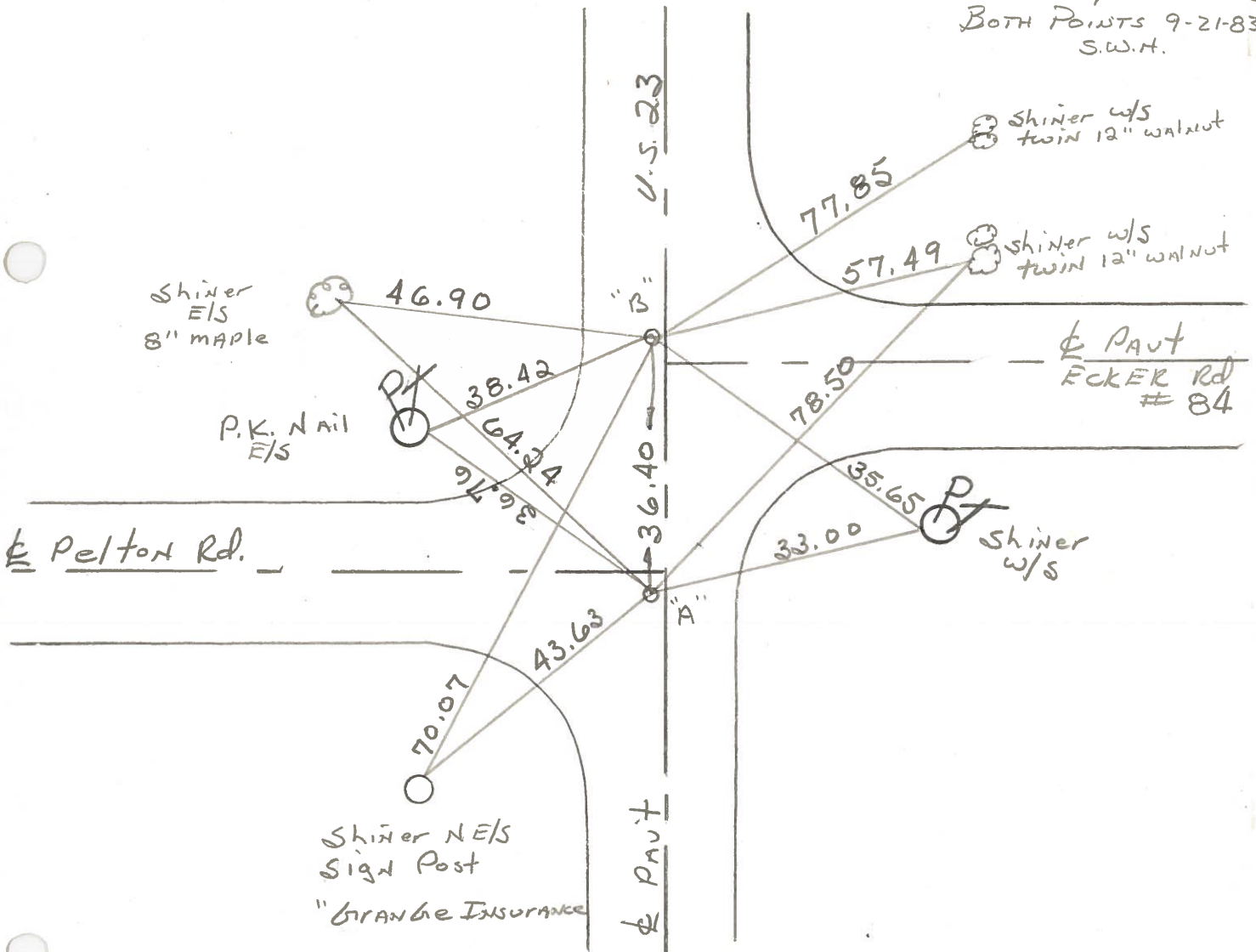
#8 - 9



Pt. "A" Fd. P.K. @ surface, 0.7' w. of & PAVT U.S. 23 & 12.7' to E. EP. = S.L.M. 106+38

Pt. "B" Fd. P.K. @ surface, 1.0' w. of & PAVT U.S. 23 & 11.2' to W. EP.

SET P.K./WASHER @
BOTH POINTS 9-21-83
S.W.H.



• Pt. "B" STA. 93 + 03.2 No & REC.

• Pt. "A" STA. 92 + 66.8 - Δ = 0° - 15' Lt.

ODOT. DISTRICT 2 SURVEY OFFICE

SHEET _____ OF _____

County WOOD ^{U.S.} S.R. 23

Date 9-1-70 o.k.
9-15-71 - o.k.

Township PERRY

Weather _____

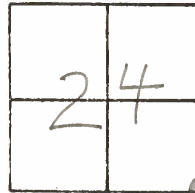
Section 24

Temp. _____

T3N, R12E

Personnel BURNSIDE

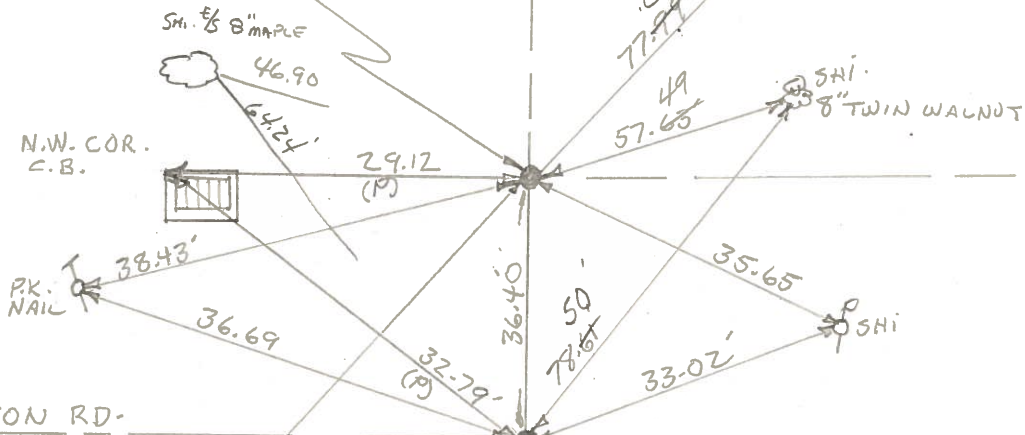
SMITH



#8 - #9

#9

STA. 93+03.2
NO ANGLE
FD BRASS MON.
P.K. NAIL



PELTON RD.

4" STEEL
SIGN POST
(FLECHTNER
HGTS)

#8
STA. 92+66.8
 $\Delta = 0^{\circ} - 15' \text{ LT.}$
"STONE" WOOD CO.
FD. BRASS MON. - P.K. NAIL

23
U.S. WOOD SENECA

PERSONNEL TITLE PERSONNEL TITLE

BURNSIDE

COUNTY Wood

DATE OK-9-1-70

SMITH

S. R. U.S. #23

WEATHER

SEC. FOSTORIA - NORTH

TEMP.

DESCRIPTION

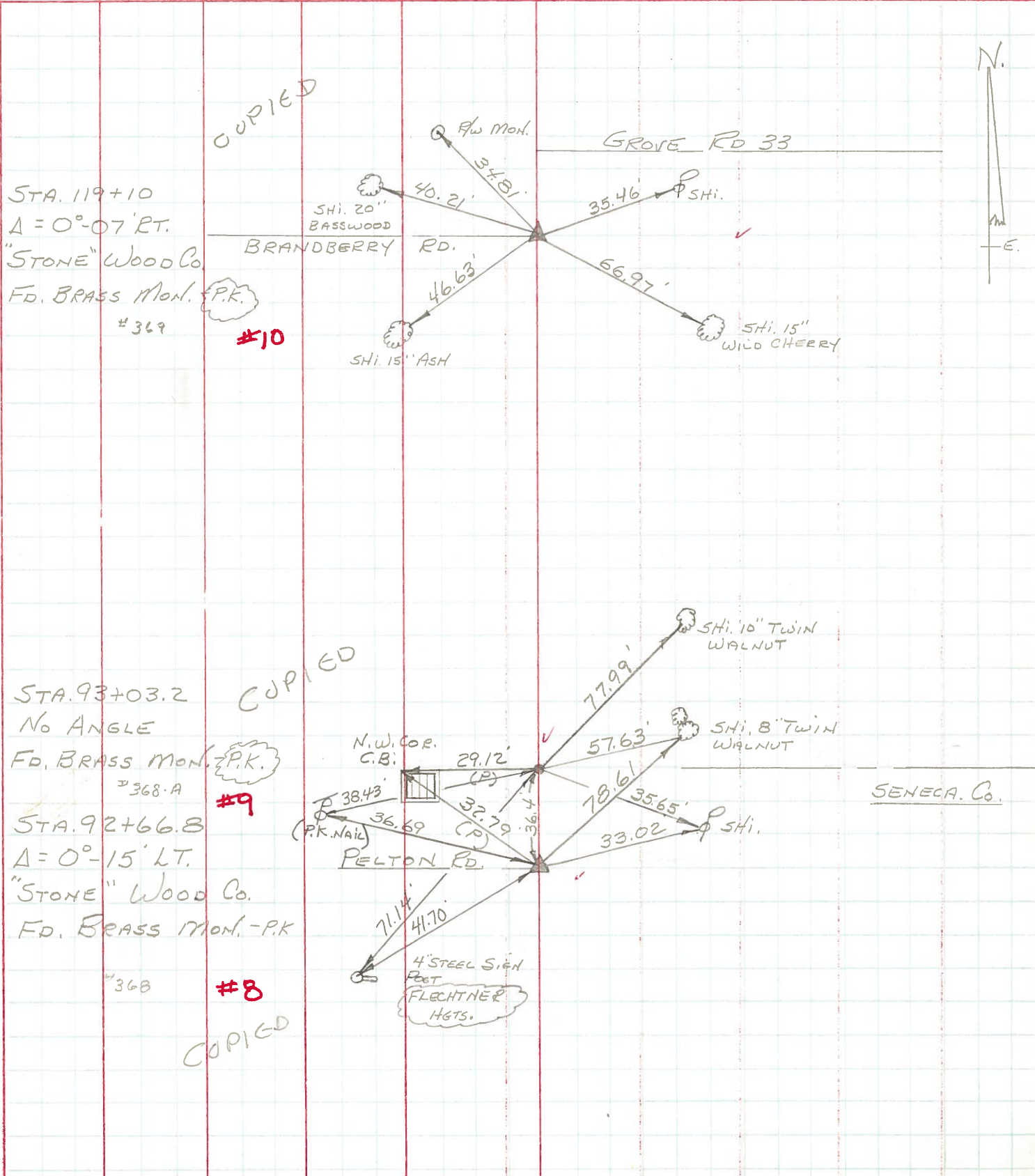
CONTROL TIES

JOB NO.

LEFT

CENTER LINE

RIGHT



COPIED

#10

COPIED

#9

#8

COPIED



SENECA Co.

PERSONNEL TITLE PERSONNEL TITLE

JAMESON
Bowers
Garino
Dolph

Burns
Heyman

COUNTY Wood-Seneca DATE 6-22-1961
2-7-1964

S. R. 199-SH.529 WEATHER Fair

SEC. A TEMP. 75°

DESCRIPTION Monument location - Set Adj Brass Mon. (17) JOB NO.

LEFT CENTER LINE RIGHT

