

O.D.O.T. DISTRICT 2 SURVEY OFFICE (USE ONLY)

PERSONNEL

REFERENCE NO. 12

SHEET 10 OF 22

NOTES O'DONNELL

DATE 8/14/18

ROUTE US 23

H.C. O'DONNELL

WEATHER SUNNY

COUNTY WOOD

R.C. HAGEMEYER

TEMP. 80°

TOWNSHIP PERRY

HOMAN, SEASLY

SECTION 13

DWG BY BALBAUGH PID 92134

T 3 N R 12 E

TYPE MONUMENT 1 1/2" BRASS MON

~~ON SURFACE~~ - BELOW 6"

OFFSET \odot PAVEMENT ON ~~LT~~ : ~~RT~~

11.2' TO RT EDGE PAVEMENT

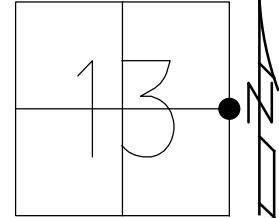
STATION: 185+48.11

HORZ. DATUM: NAD83 (2011)

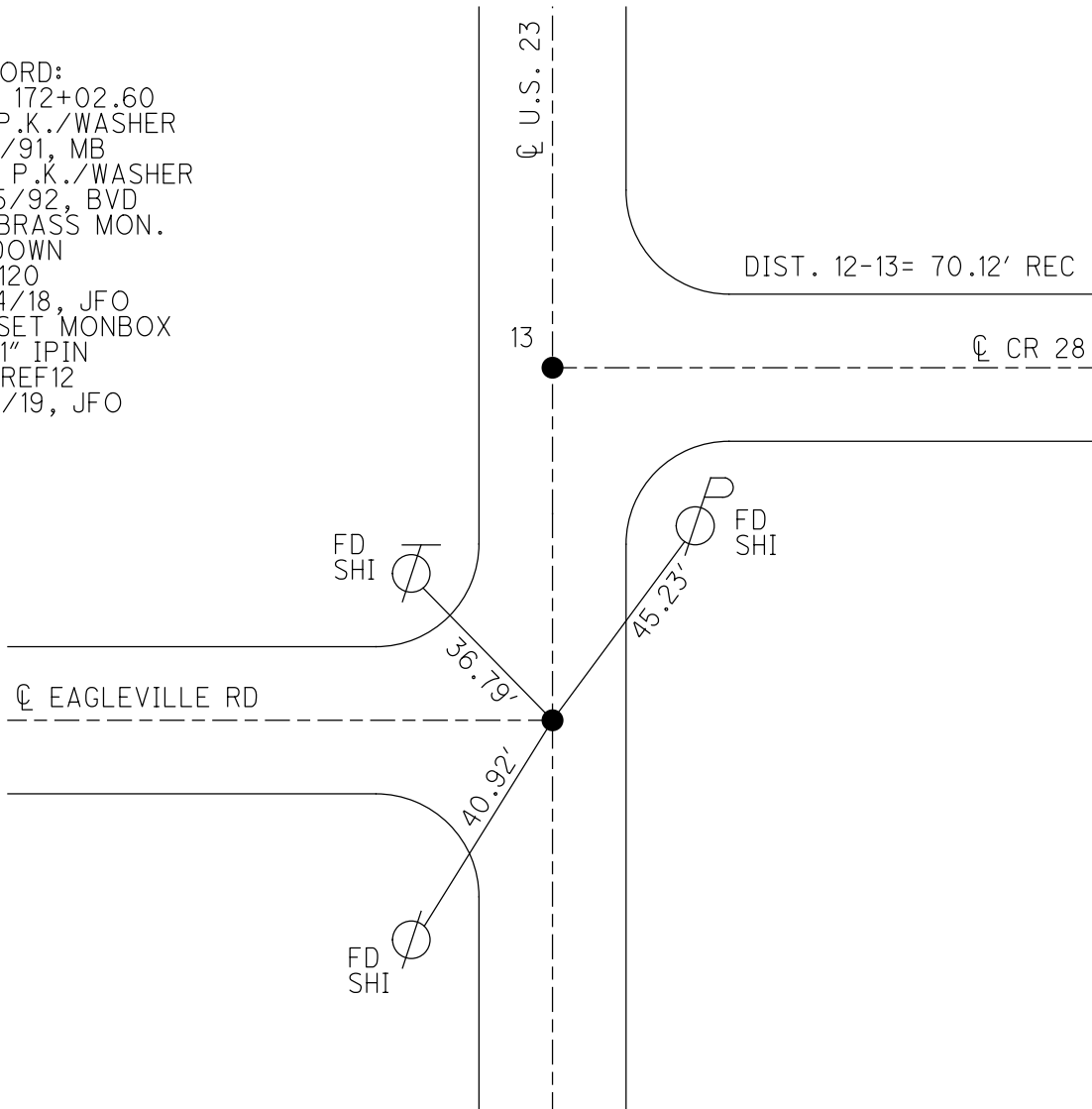
GEOID: 2012A

GRID: NORTHING: 566388.226

EASTING: 1715287.142



RECORD:
 STA 172+02.60
 FD P.K./WASHER
 8/5/91, MB
 SET P.K./WASHER
 4/15/92, BVD
 FD BRASS MON.
 6" DOWN
 REF120
 8/14/18, JFO
 FD SET MONBOX
 W/ 1" IPIN
 NEWREF12
 11/6/19, JFO



O.D.O.T. DISTRICT 2 SURVEY OFFICE

PERSONNEL

REFERENCE NO. 12413

SHEET 5 OF 23

NOTES BARNHISEL

H.C. VAN DUSEN

R.C. KUSZ

DATE 8-5-91

WEATHER Cloudy

TEMP. +80°

ROUTE U.S. 23

COUNTY Wood

TOWNSHIP Perry

SECTION 13

T. 3 N. R. 12 E.

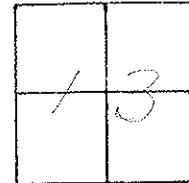
TYPE MONUMENT P.K. NAILS & Washers

ON SURFACE - BELOW PT "A" SURFACE PT "B" 1.5" Down

LEFT - C PAV'T. - RIGHT BOTH

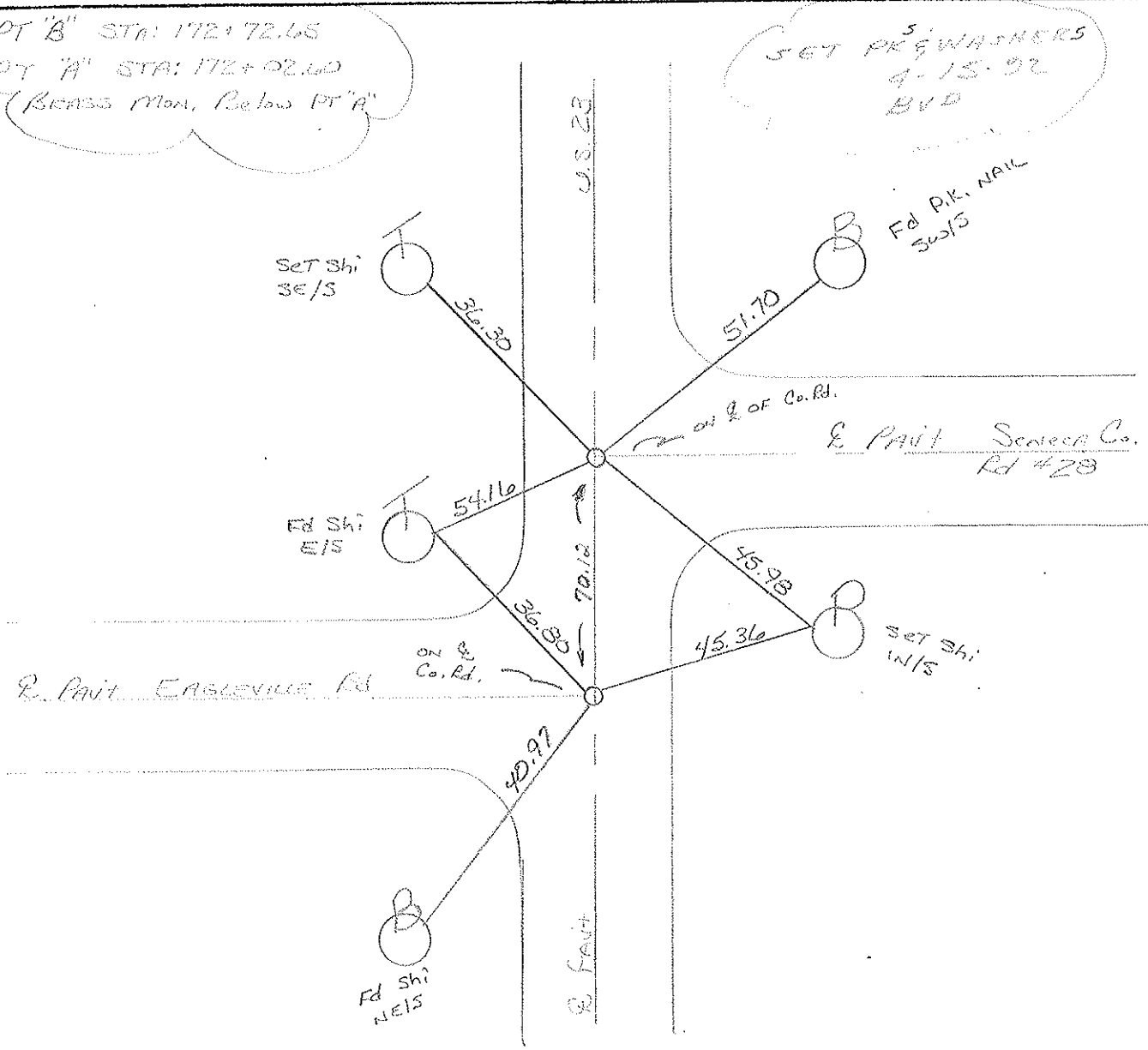
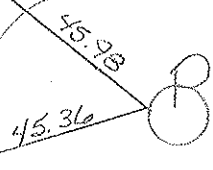
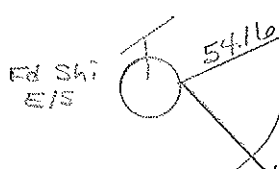
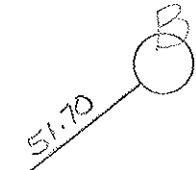
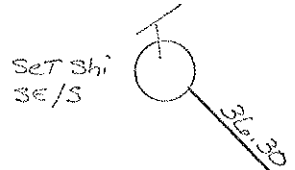
"A" 11.2 RT
"B" 12.1 LT TO EDGE PAVEMENT

S.L.M. 185+71 PT "A"



PT "B" STA: 172+72.65
PT "A" STA: 172+02.60
(BRASS MON. Below PT "A")

SET PREWASHERS
4-15-92
BVD



O.D.O.T. DISTRICT 2 SURVEY OFFICE

SHEET

OF

County Wood S.R. U.S. 23

Date 7-28-81

Township Perry

Weather cloudy

Section 13

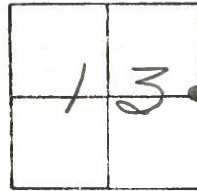
Temp. +75°

T3N, R12E

Personnel Hoffman

Loehrke

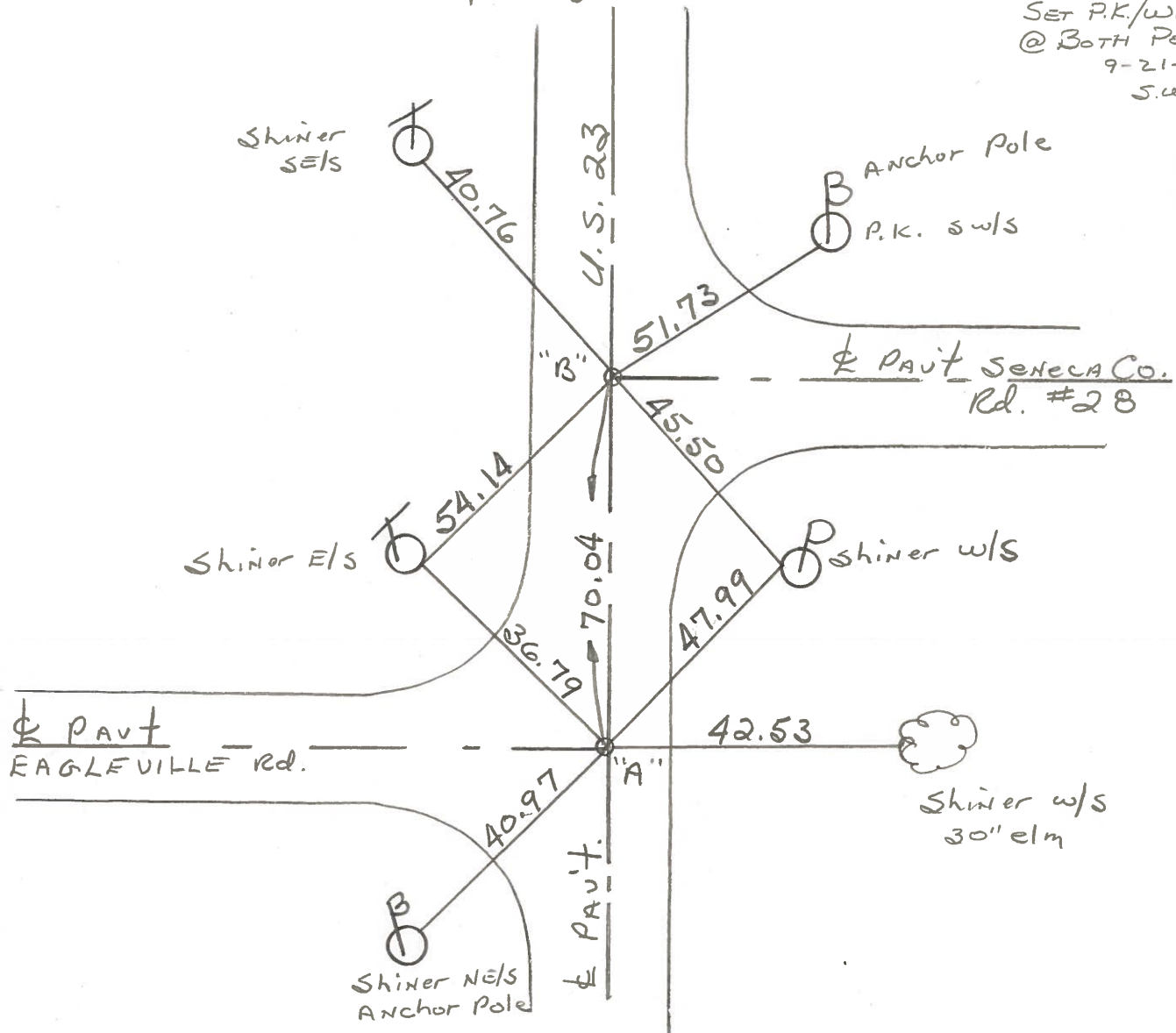
12-13 Householder



Pt. "A" Fd. P.K. @ surface, ctr. of PAVT U.S. 23 $\frac{1}{2}$ 11.5 to E.E.P. SLM=185+95
 Fd. 2nd P.K. 0.08' N. of Pt. "A"; BRASS MON. below Pt. "A"

Pt. "B" Fd. P.K. @ surface, ctr. of PAVT U.S. 23 $\frac{1}{2}$ 12.6' to W.E.P.

SET P.K./WASHER
 @ BOTH POINTS
 9-21-83
 S.W.H.



Pt. "B" STA. 172 + 72.65
 Pt. "A" STA. 172 + 02.60 ~ Rec.

ODOT. DISTRICT 2 SURVEY OFFICE

SHEET _____ OF _____

County WOOD ^{U.S.} ~~S.R.~~ 23

Date 9-1-70-OK
9-15-71-OK

Township PERRY

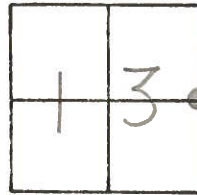
Weather _____

Section 13

Temp. _____

T3N, R12E

Personnel BURNSIDE

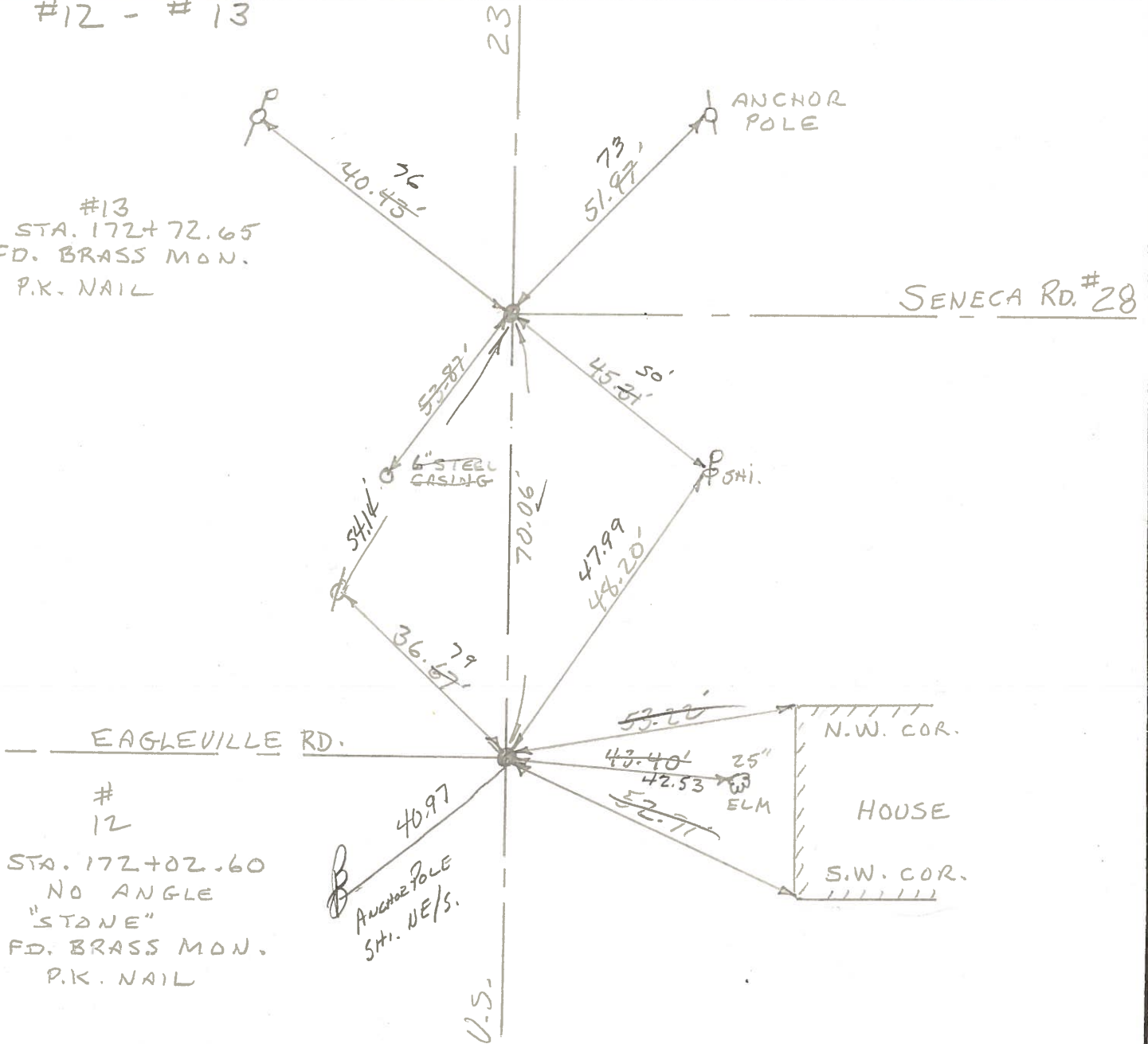


#12 - #13

23

#13
STA. 172+72.65
FD. BRASS MON.
P.K. NAIL

SENECA RD. #28



EAGLEVILLE RD.

#12

STA. 172+02.60
NO ANGLE
"STONE"
FD. BRASS MON.
P.K. NAIL

ANCHOR POLE
STI. NE/S.

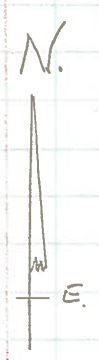
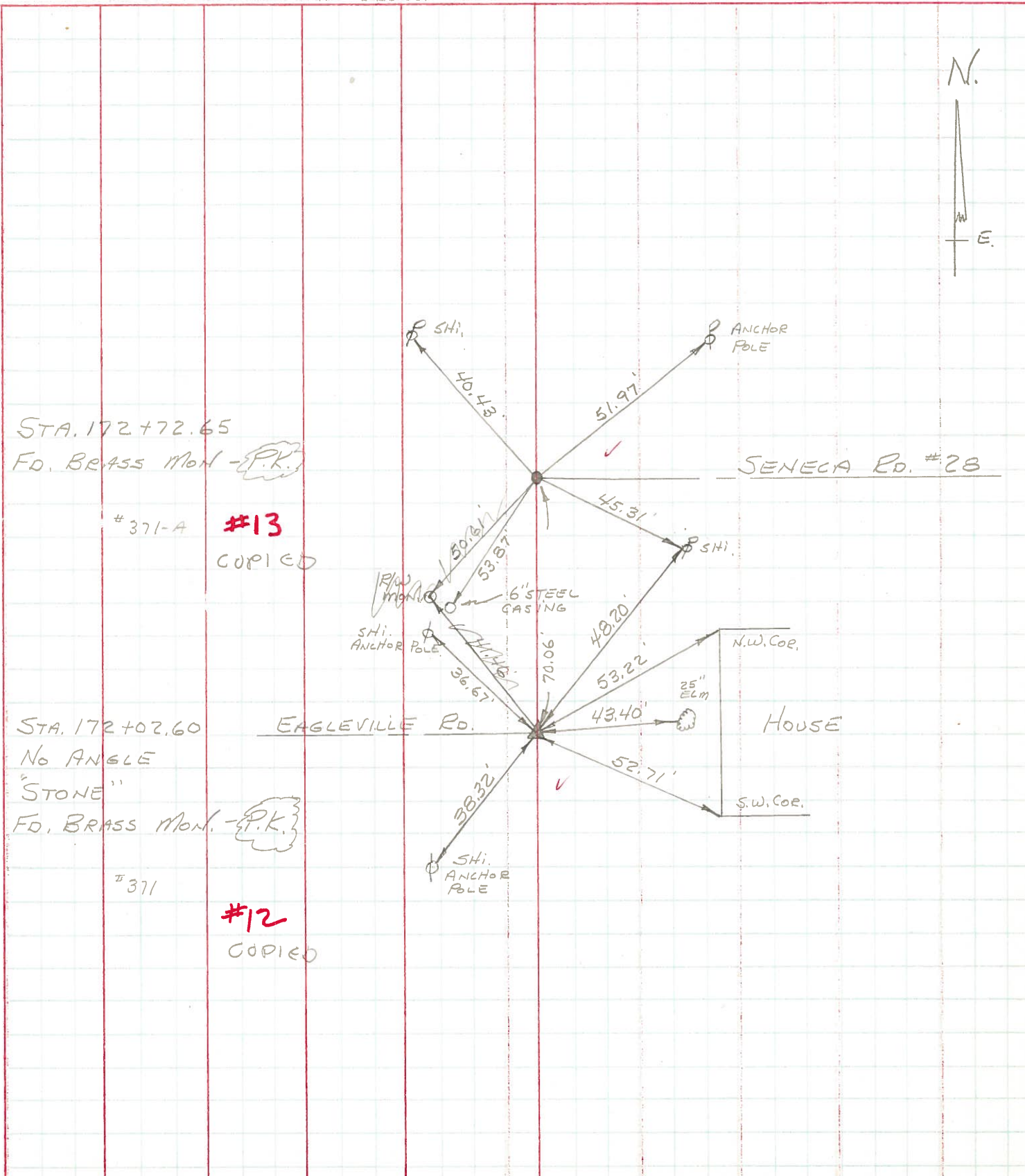
U.S.



PERSONNEL TITLE PERSONNEL TITLE
 CK. BY BURNSIDE
 SMITH

COUNTY WOOD DATE OK-9-1-70
 S. R. U.S. #23 WEATHER
 SEC. FOSTORIA ~ NORTH TEMP.

DESCRIPTION CONTROL TIES LEFT CENTER LINE RIGHT JOB NO.



PERSONNEL	TITLE	PERSONNEL	TITLE	COUNTY	DATE
Jameson		Buens		Wood-Sycamore	6-22-1961
Bowers		Heyman			2-7-1964
Corro				S. R.	199-SH529
Dalpe				WEATHER	Fair
				SEC.	A
				TEMP.	75°

