

O.D.O.T. DISTRICT 2 SURVEY OFFICE (USE ONLY)

PERSONNEL

REFERENCE NO. 15

SHEET 14 OF 22

NOTES RHOADES

DATE 5/7/19

ROUTE US 23

H.C. O'DONNELL

WEATHER CLOUDY

COUNTY WOOD

R.C. MILLER

TEMP. 50°

TOWNSHIP PERRY

SECTION 12

DWG BY BALBAUGH PID 92134

T 3 N R 12 E

TYPE MONUMENT BRASS MON

~~ON SURFACE~~ - BELOW 5"

OFFSET CL PAVEMENT ON ~~LT~~ : ~~RT~~

11.8' TO RT EDGE PAVEMENT

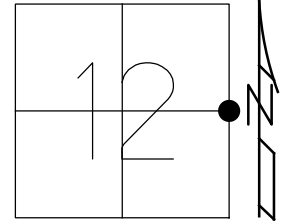
STATION: 238+44.50

HORIZ.DATUM: NAD83 (2011)

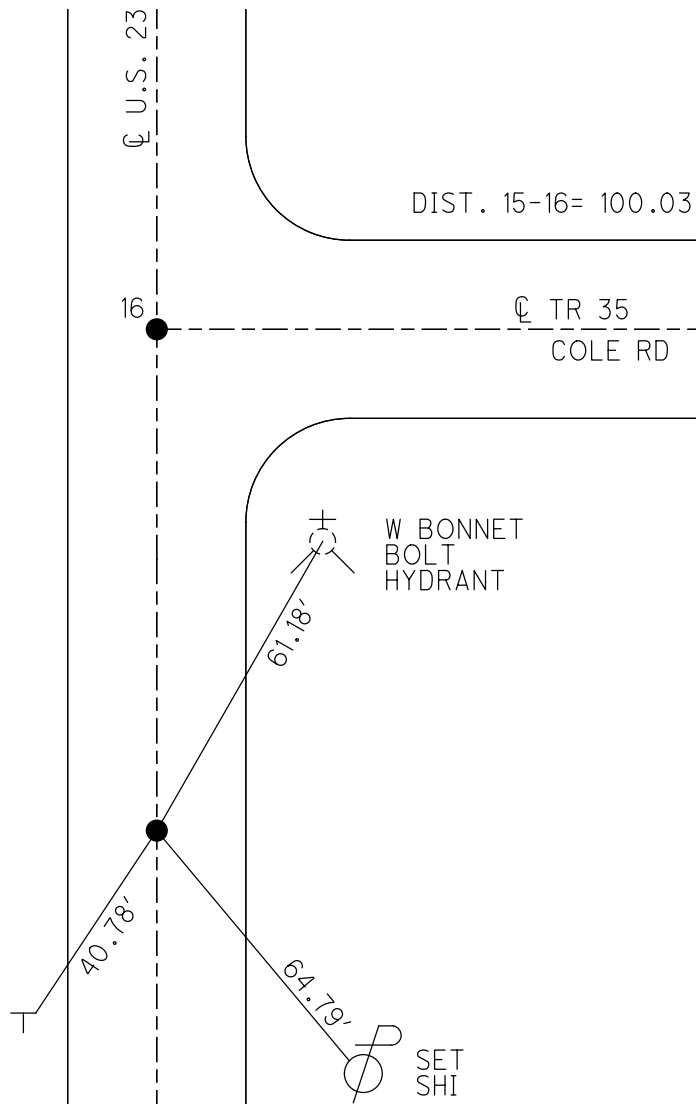
GEOID: 2012A

GRID: NORTHING: 571683.407

EASTING: 1715401.975



RECORD:  
 STA 225+00  
 $\Delta = 0^{\circ}07'$  LT  
 FD P.K./WASHER  
 8/6/91, MB  
 SET P.K./WASHER  
 4/16/92, BVD  
 FD BRASS MON  
 5" DOWN  
 REF15  
 8/24/17, JFO  
 SET MAG/WASHER  
 10/28/19, JFO



# O.D.O.T. DISTRICT 2 SURVEY OFFICE

PERSONNEL

REFERENCE NO. 154116

SHEET 7 OF 23

NOTES BARNHISEL

H.C. VAN DUSEN

DATE 8-6-91

ROUTE U.S. 23

R.C. KUSZ

WEATHER cloudy

COUNTY Wood

TEMP. +75°

TOWNSHIP Berry

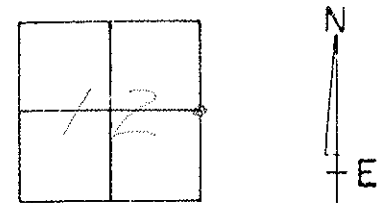
SECTION 12

T. 3 N. R. 12 E.

TYPE MONUMENT PKT Washers

ON SURFACE - BELOW yes

LEFT - C PAV'T. - RIGHT yes

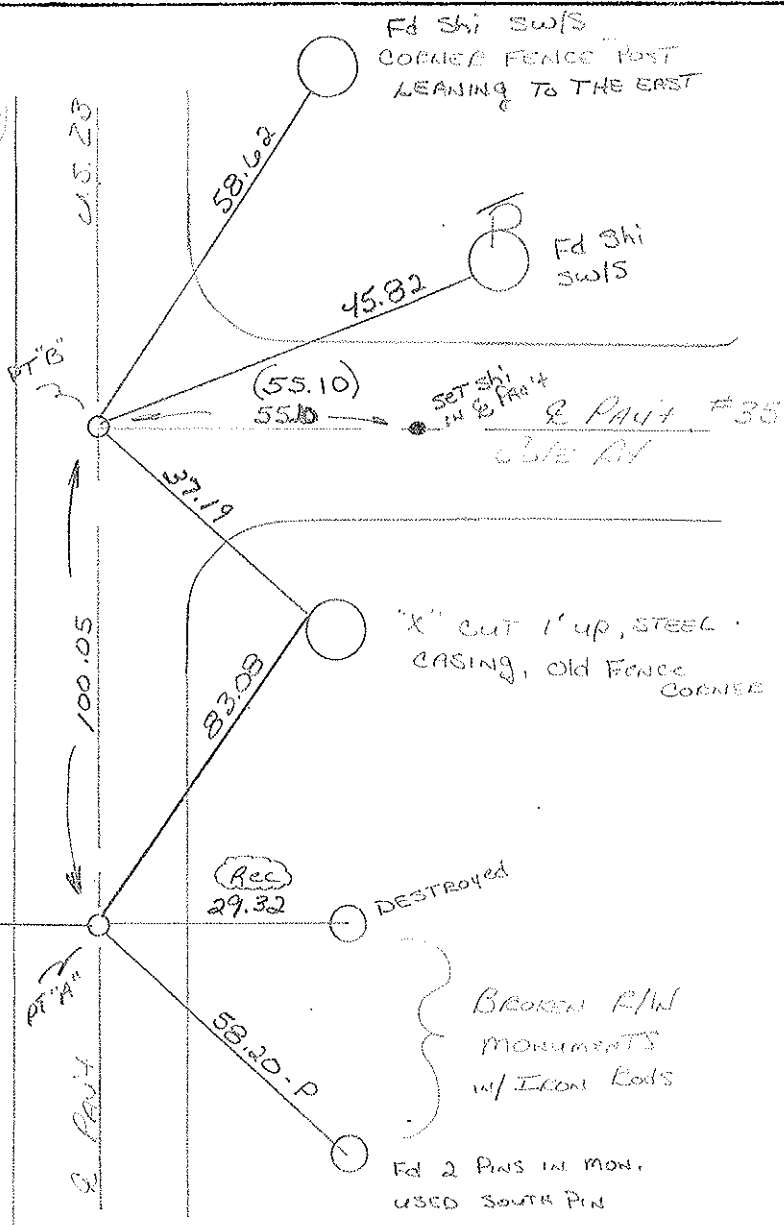


<sup>11.8</sup> <sup>RT</sup>  
<sup>12.1</sup> <sup>LT</sup> TO EDGE PAVEMENT

S.L.M. 238+64

RECORDED  
PT "B" STA: 226+00  
PT "A" STA: 225+00 - A: 0° 07' LT  
SET PKT & WASHERS  
4-16-91  
BVD

BROKEN R/W  
MON.  
USED IRON ROD



Fd Shi Swis  
CORNER FENCE POST  
LEANING TO THE EAST

Fd Shi Swis

SET SHI  
IN R. PAVT #35

"X" CUT 1' UP, STEEL  
CASING, OLD FENCE  
CORNER

DESTROYED

BROKEN R/W  
MONUMENTS  
w/ IRON RODS

Fd 2 PINS IN MON.  
USED SOUTH PIN

County Wood S.R. d.s. 23

Township Perry

Section 12

T3N, R12E

Personnel HOFFMAN

Loehrke

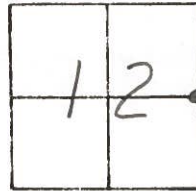
Householder

# 15-16

Date 7-28-81

Weather cloudy

Temp. +75°



Pt. "A" Fd. P.K. @ surface S.L.M = 239+03

12.1' to W.E.P.

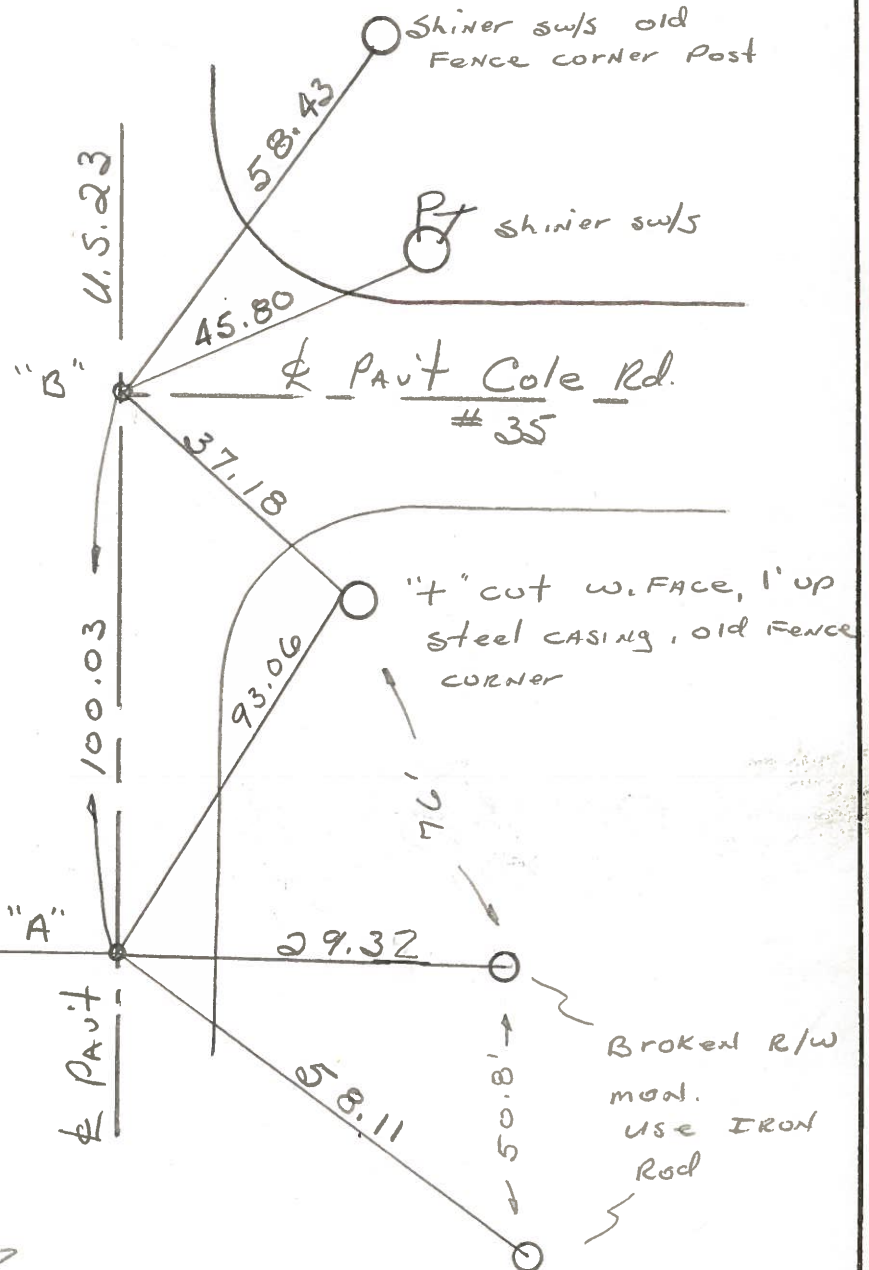
12.5' to E.E.P.

SET P.K. WASHER @ BOTH POINTS 9-21-83 S.W.H.

Pt. "B" Fd. P.K. @ surface

ctr of PAUT U.S. 23

12.1 to W.E.P.



Broken r/w mon.

use IRON Rod

Broken R/W mon.

use IRON Rod

Pt. "B" STA. 226+00 - Rec.  $\rightarrow$

Pt. "A" STA. 225+00 -  $\Delta = 0^{\circ}-07' Lt.$

O.D.O.T. DISTRICT 2 SURVEY OFFICE

SHEET \_\_\_\_\_ OF \_\_\_\_\_

County WOOD <sup>U.S.</sup> ~~S.R.~~ 23

Township PERRY

Section 12

T3N, R12E

Personnel MORRISON

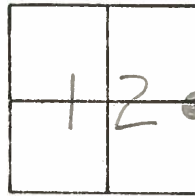
BURNSIDE

SMITH

Date 9-1-70-OK  
9-15-71-OK

Weather \_\_\_\_\_

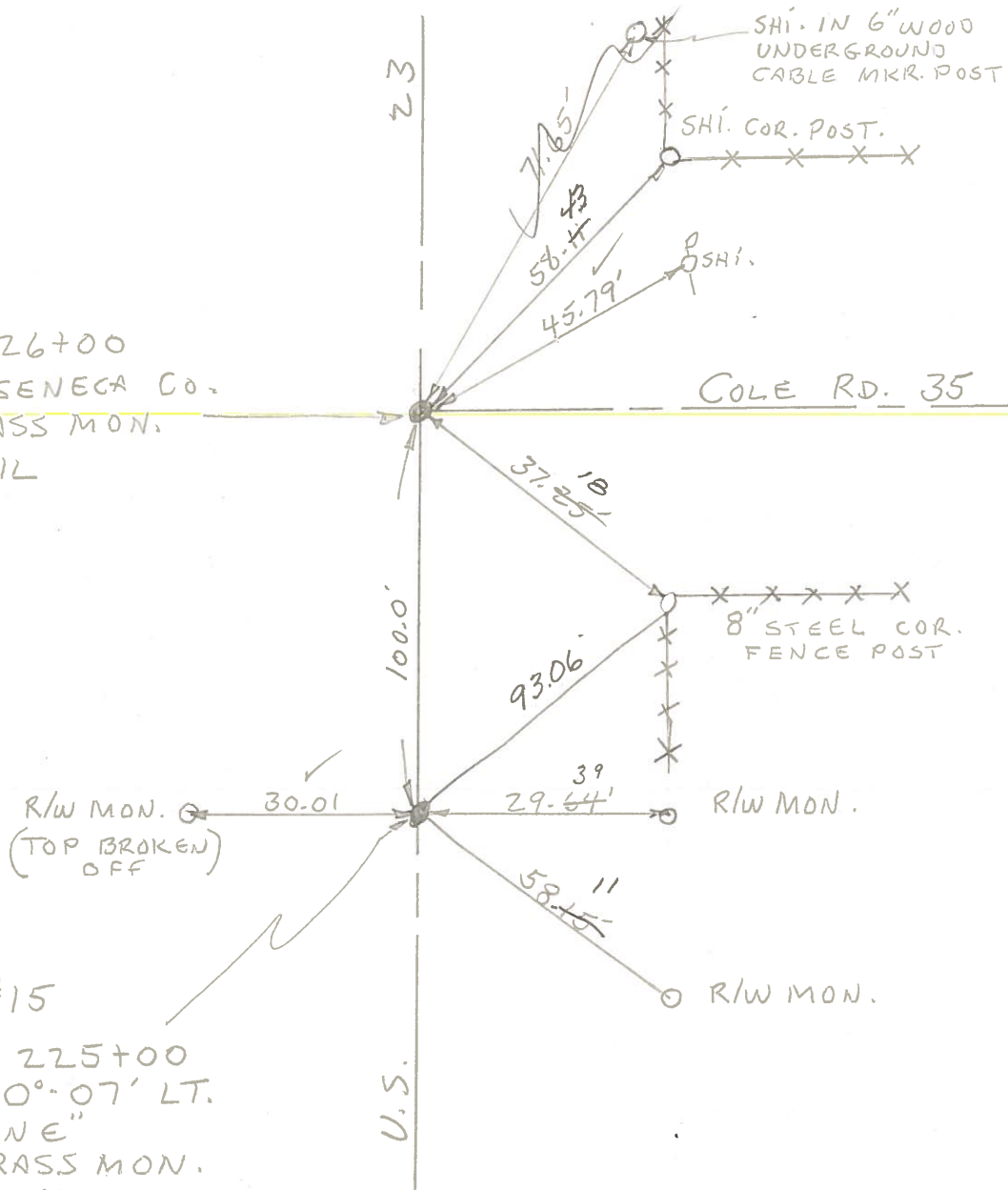
Temp. \_\_\_\_\_



#15 - #16

#16  
STA. 226+00  
"STONE" SENECA Co.  
FD. BRASS MON.  
P.K. NAIL

#15  
STA. 225+00  
 $\Delta = 0^{\circ} - 07' \text{ LT.}$   
"STONE"  
FD. BRASS MON.  
P.K. NAIL



PERSONNEL TITLE PERSONNEL TITLE

CK. BY  
MORRISON  
BURNSIDE  
SMITH

COUNTY Wood

DATE OK-9-1-70

S. R. U.S. # 23

WEATHER

SEC. FOSTORIA - NORTH

JOB NO.

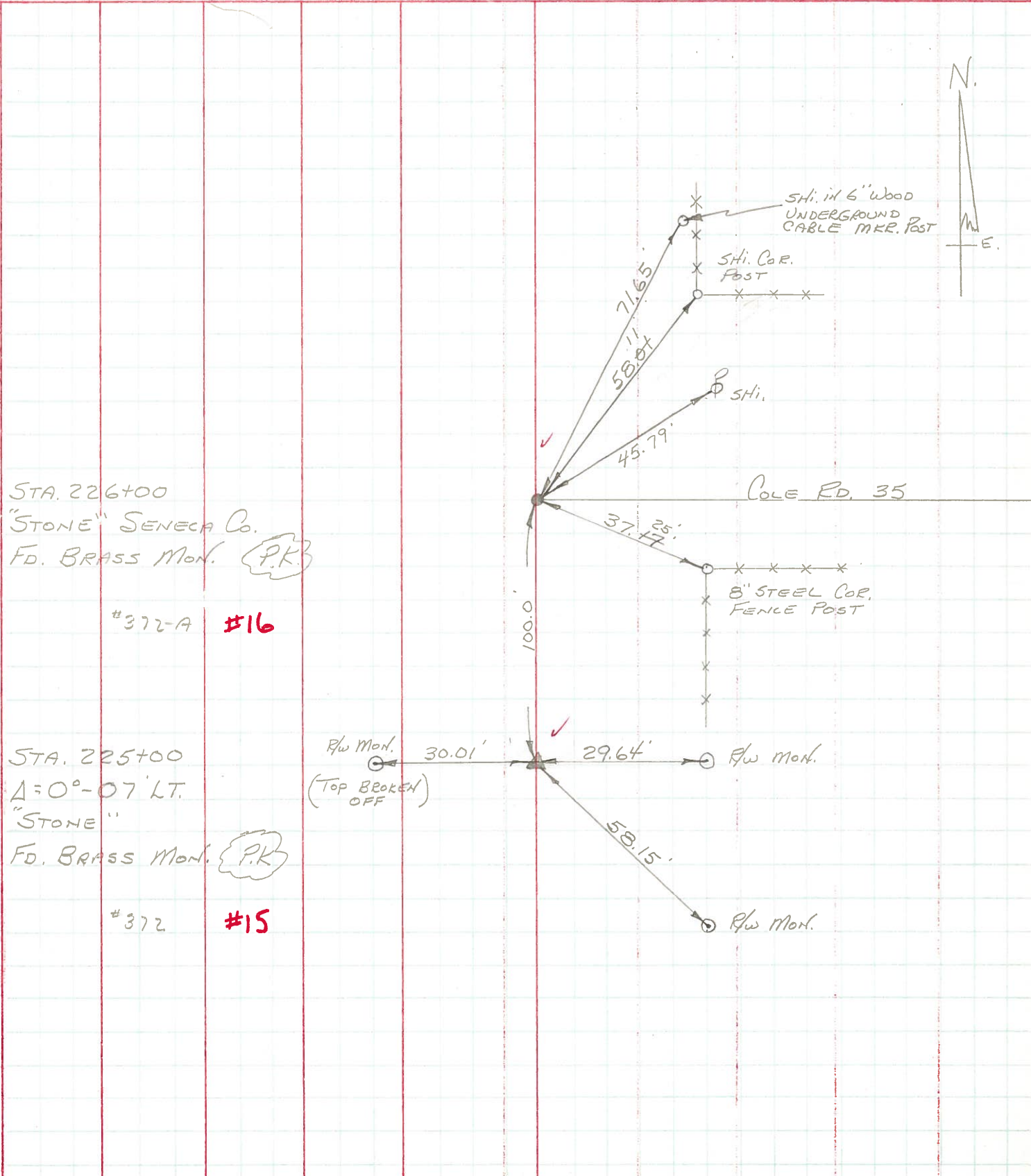
DESCRIPTION

CONTROL TIES

LEFT

CENTER LINE

RIGHT



PERSONNEL	TITLE	PERSONNEL	TITLE	COUNTY	DATE	WEATHER	TEMP.
Jameson		Furnas		Wood-Seneca	6-22-61		
Powers		Heyman			2-7-64	Fair	
Delph				S. R. 199 S.H 529			75°
Garno				SEC. A			

DESCRIPTION Monument Location LEFT CENTER LINE RIGHT JOB NO.

