

O.D.O.T. DISTRICT 2 SURVEY OFFICE (USE ONLY)

PERSONNEL \_\_\_\_\_ REFERENCE NO. 16 SHEET 15 OF 22  
 NOTES RHOADES DATE 5/7/19 ROUTE US 23  
 H.C. O'DONNELL WEATHER CLOUDY COUNTY WOOD  
 R.C. MILLER TEMP. 50° TOWNSHIP PERRY  
 DWG BY BALBAUGH PID 92134 SECTION 12  
 T 3 N R 12 E

TYPE MONUMENT P.K./WASHER

~~ON SURFACE~~ - BELOW 2 1/2"

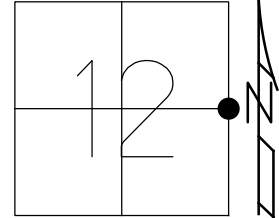
OFFSET  $\odot$  PAVEMENT ON ~~LT~~ : ~~RT~~

12.1' TO LT EDGE PAVEMENT

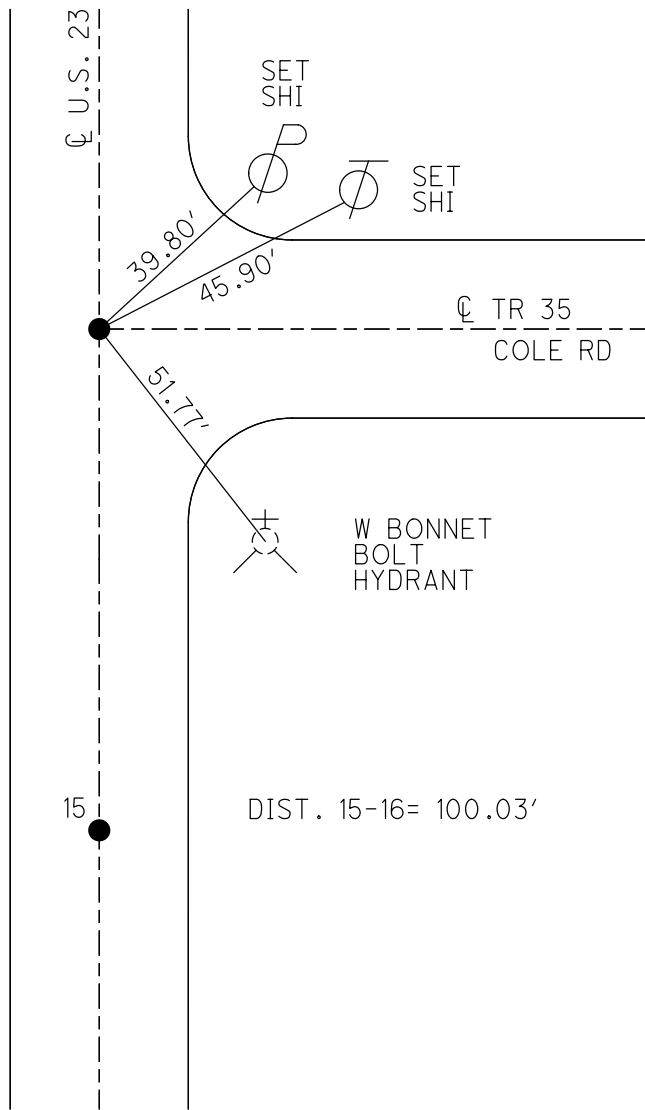
STATION: 239+44.53

HORZ.DATUM: NAD83 (2011) GEOID: 2012A

GRID: NORTHING: 571783.374 EASTING: 1715404.069



RECORD:  
 STA 226+00  
 FD P.K./WASHER  
 8/6/91, MB  
 SET P.K./WASHER  
 4/16/92, BVD  
 FD P.K./WASHER  
 2 1/2" DOWN  
 REF16  
 8/24/17, JFO  
 SET MAG/WASHER  
 10/28/19, JFO



# O.D.O.T. DISTRICT 2 SURVEY OFFICE

PERSONNEL

REFERENCE NO. 154116

SHEET 7 OF 23

NOTES BARNHISEL

H.C. VAN DUSEN

DATE 8-6-91

ROUTE U.S. 23

R.C. KUSZ

WEATHER cloudy

COUNTY Wood

TEMP. +75°

TOWNSHIP Berry

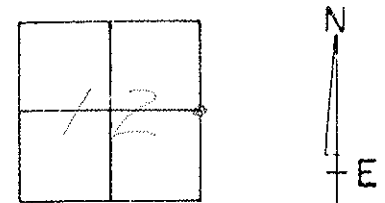
SECTION 12

T. 3 N. R. 12 E.

TYPE MONUMENT PKT Washers

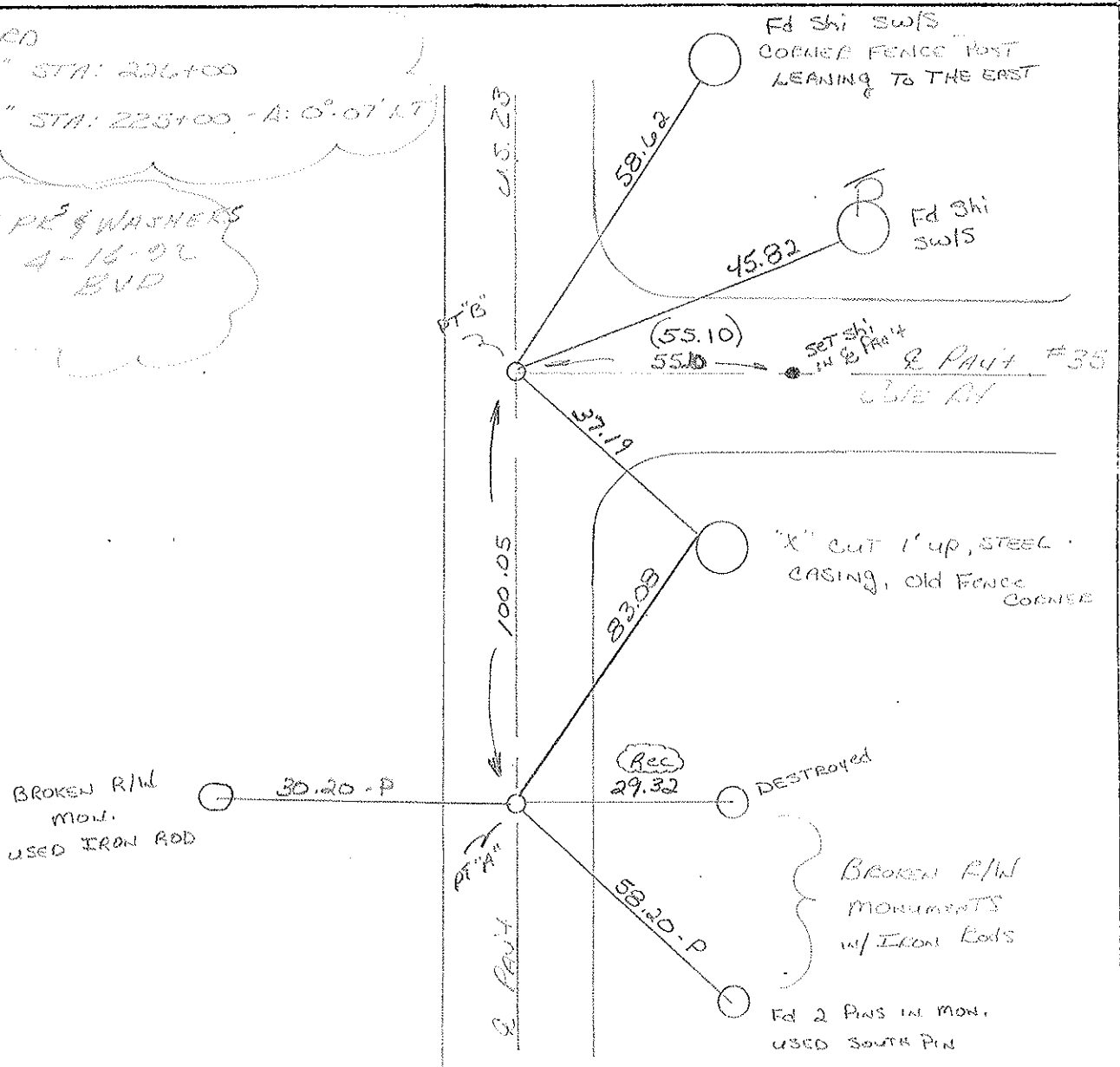
ON SURFACE - BELOW yes

LEFT - C PAV'T. - RIGHT yes



<sup>11.8</sup> <sup>RT</sup>  
<sup>12.1</sup> <sup>LT</sup> TO EDGE PAVEMENT  
S.L.M. 238+64

RECORDED  
PT "B" STA: 226+00  
PT "A" STA: 225+00 - A: 0° 07' LT  
SET PKT & WASHERS  
4-16-91  
BVD



County Wood S.R. d.s. 23

Township Perry

Section 12

T3N, R12E

Personnel HOFFMAN

Loehrke

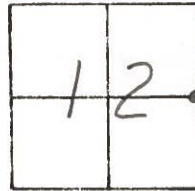
Householder

# 15-16

Date 7-28-81

Weather cloudy

Temp. +75°



Pt. "A" Fd. P.K. @ surface S.L.M = 239+03

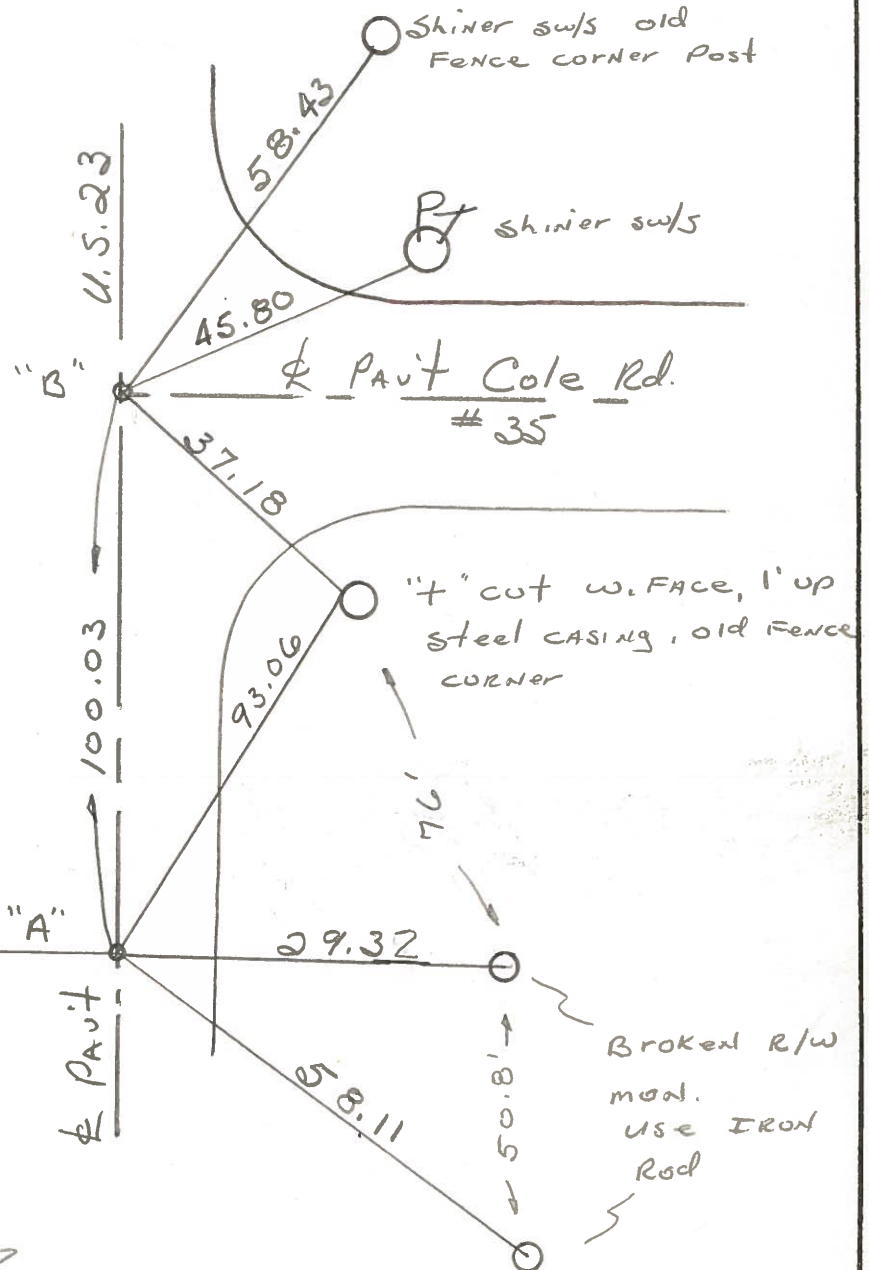
12.1' to W.E.P.

12.5' to E.E.P.

SET P.K. WASHER @ BOTH POINTS 9-21-83 S.W.H.

Pt. "B" Fd. P.K. @ surface ctr of PAVT U.S. 23

12.1' to W.E.P.



Broken r/w mon.

use IRON Rod

Broken R/w mon.

use IRON Rod

Pt. "B" STA. 226+00 - Rec.  $\rightarrow$

Pt. "A" STA. 225+00 -  $\Delta = 0^{\circ}-07' Lt.$

O.D.O.T. DISTRICT 2 SURVEY OFFICE

SHEET \_\_\_\_\_ OF \_\_\_\_\_

County WOOD <sup>U.S.</sup> ~~S.R.~~ 23

Township PERRY

Section 12

T3N, R12E

Personnel MORRISON

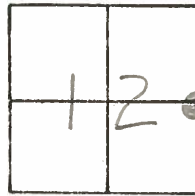
BURNSIDE

SMITH

Date 9-1-70-OK

Weather \_\_\_\_\_

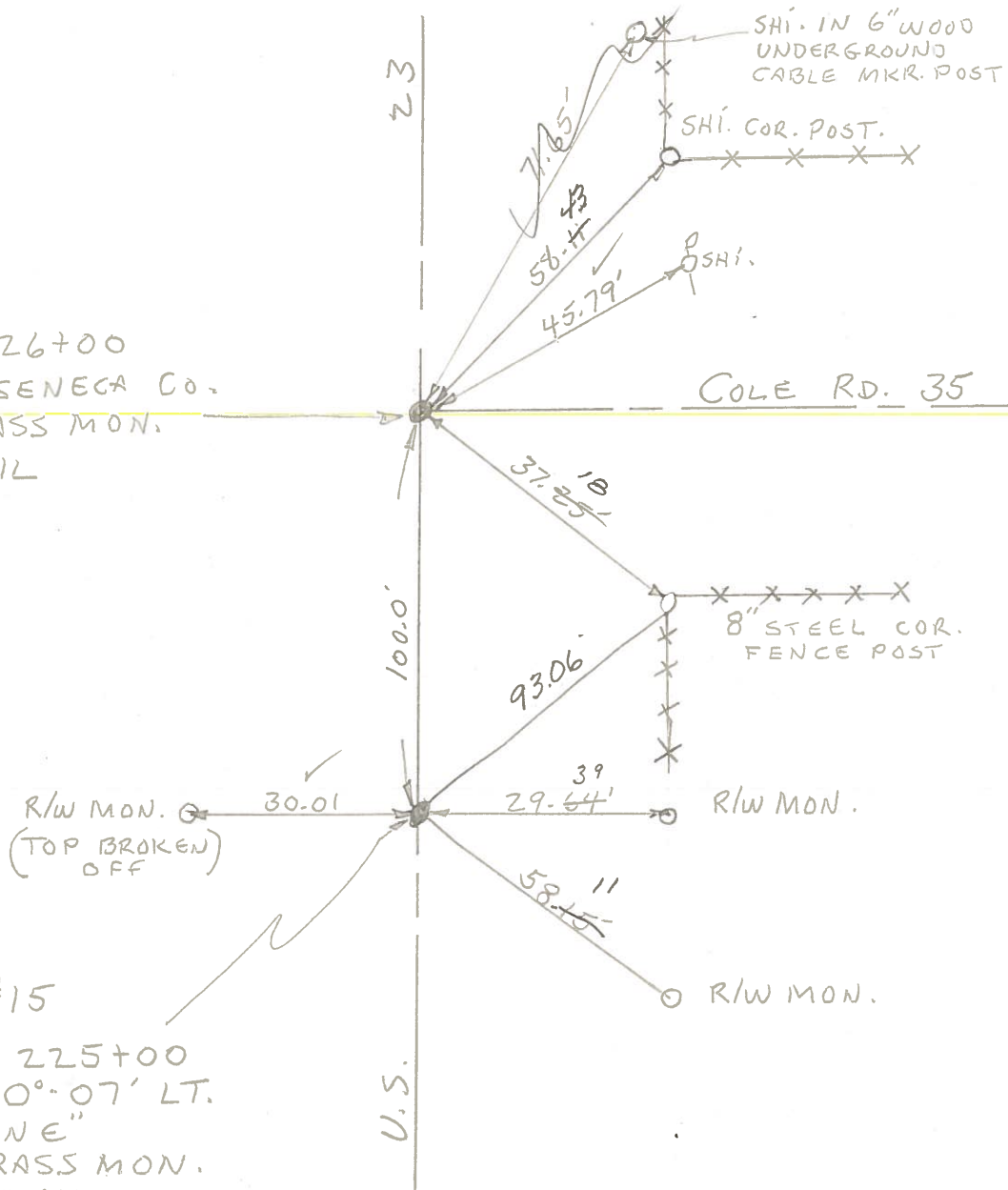
Temp. \_\_\_\_\_



#15 - #16

#16  
 STA. 226+00  
 "STONE" SENECA Co.  
 FD. BRASS MON.  
 P.K. NAIL

#15  
 STA. 225+00  
 $\Delta = 0^{\circ} - 07' \text{ LT.}$   
 "STONE"  
 FD. BRASS MON.  
 P.K. NAIL



PERSONNEL TITLE PERSONNEL TITLE

CK. BY  
MORRISON  
BURNSIDE  
SMITH

COUNTY Wood

DATE OK-9-1-70

S. R. U.S. # 23

WEATHER

SEC. FOSTORIA - NORTH

JOB NO.

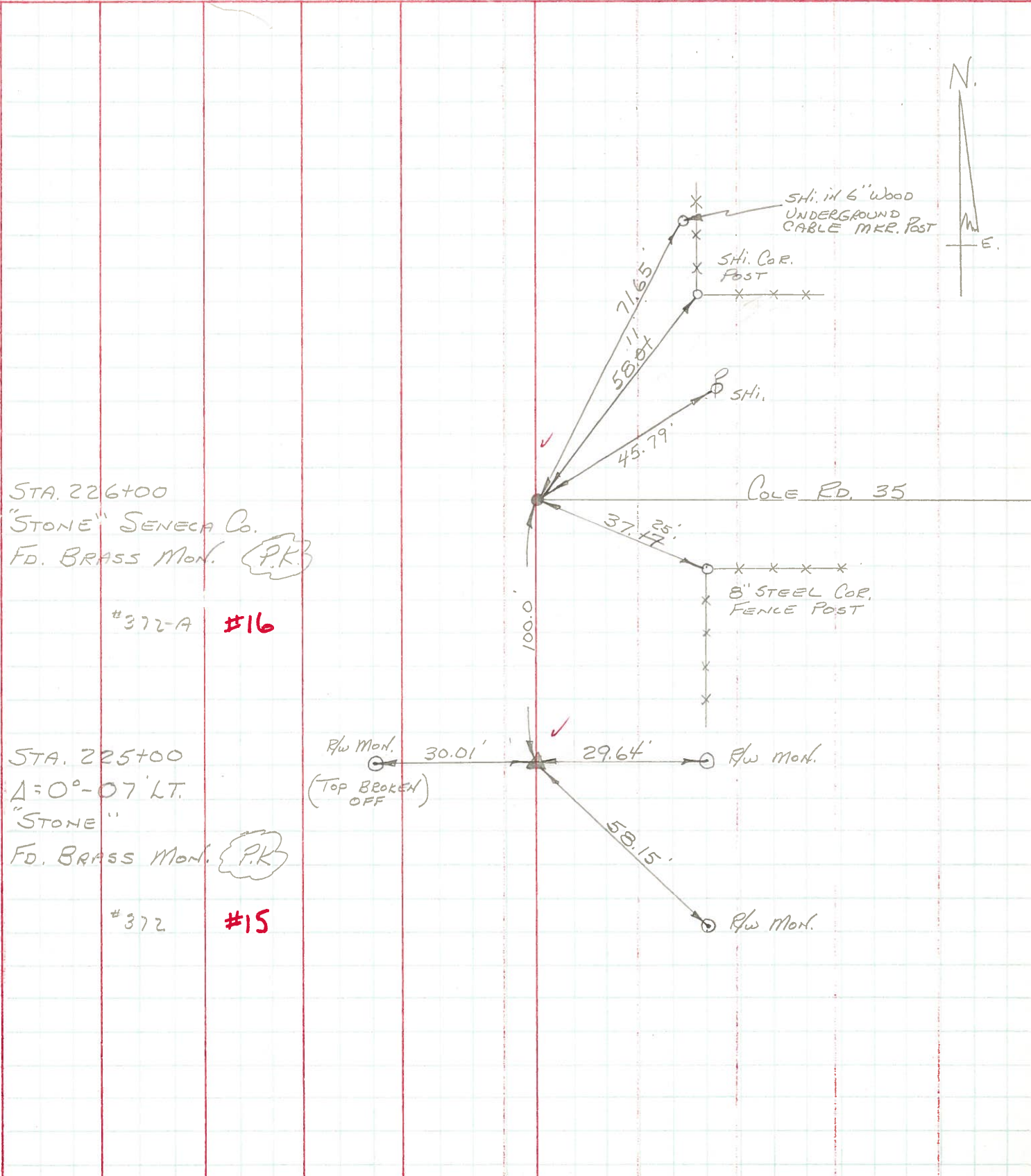
DESCRIPTION

CONTROL TIES

LEFT

CENTER LINE

RIGHT



PERSONNEL	TITLE	PERSONNEL	TITLE	COUNTY	DATE	WEATHER	TEMP.
Jameson		Furns		Wood-Seneca	6-22-61		
Powers		Heyman			2-7-64	Fair	
Delph				S. R. 199 S.H 529			
Garno				SEC. A			75°
DESCRIPTION	Monument Location						

