

O.D.O.T. DISTRICT 2 SURVEY OFFICE (USE ONLY)

PERSONNEL

REFERENCE NO. 17

SHEET 16 OF 22

NOTES RHOADES

DATE 5/7/19

ROUTE US 23

H.C. O'DONNELL

WEATHER CLOUDY

COUNTY WOOD

R.C. MILLER

TEMP. 50°

TOWNSHIP PERRY

SECTION 12

DWG BY BALBAUGH PID 92134

T 3 N R 12 E

TYPE MONUMENT P.K./WASHER

~~ON SURFACE~~ - BELOW 3"

OFFSET \odot PAVEMENT ON ~~LT~~ : ~~RT~~

12.2' TO LT EDGE PAVEMENT

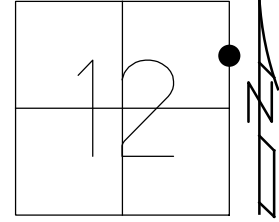
STATION: 251+65.79

HORZ. DATUM: NAD83 (2011)

GEOID: 2012A

GRID: NORTHING: 573004.426

EASTING: 1715428.765



RECORD:
 STA 238+21.8
 $\Delta = 0^{\circ}18'$ LT
 FD P.K./WASHER
 8/12/91, MB
 SET P.K./WASHER
 4/16/92, BVD
 FD P.K.NAIL
 3" DOWN
 REF17
 8/24/17, JFO
 SET MAG/WASHER
 10/28/19, JFO

U.S. 23

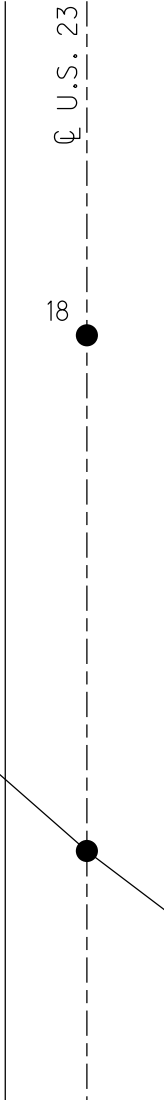
18

DIST. 17-18= 104.83'

FD "+" ON
 FACE OF SQUARE
 CONC. POST
 "CENTER OF THE WORLD"



41.58'



38.29'



SET
 SHI

O.D.O.T. DISTRICT 2 SURVEY OFFICE

PERSONNEL

REFERENCE NO. 17 6/18

SHEET 8 OF 23

NOTES BARNHISEL

H.C. VAN DUSEN

R.C. KUSZ

DATE 8-12-91

WEATHER SUNNY

TEMP. +82°

ROUTE U.S. 28

COUNTY WOOD

TOWNSHIP PERMI

SECTION 12

T. 3 N. R. 12 E.

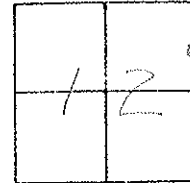
TYPE MONUMENT P.K.'S & WASHERS

ON SURFACE - BELOW BOTH

LEFT - & PAV'T. - RIGHT BOTH

^A 12.0
^B 13.0 TO LT EDGE PAVEMENT

S.L.M. 251+86 PT "A"

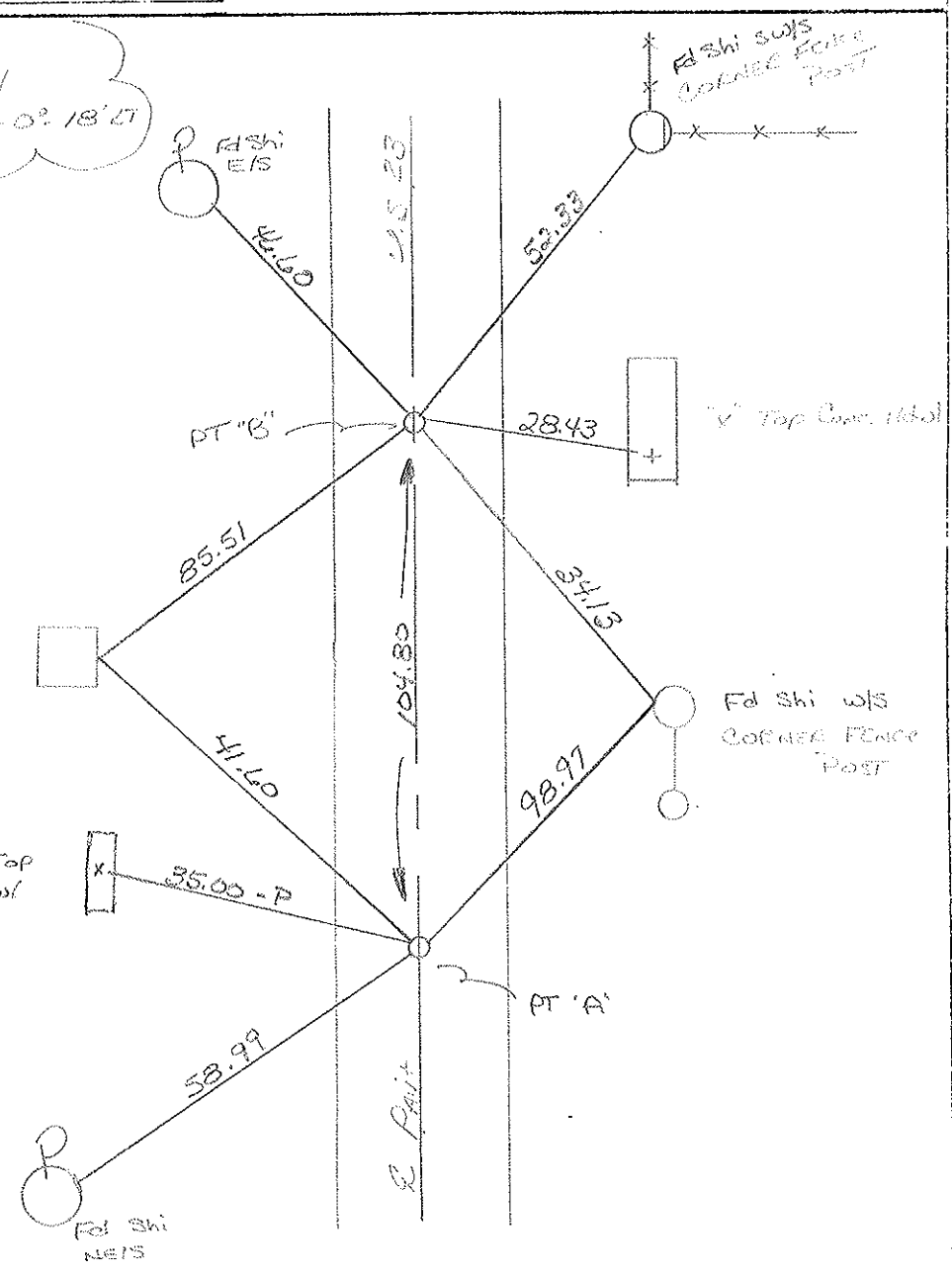


RECORD:
PT "B" STA: 237+26.61
PT "A" STA: 238+21.8 - Δ = 0° 18' 00"

SET PK'S & WASHERS
4-16-92
BVD

Cut "X" ON FACE
OF SQUARE CONC.
CORNER POST

Fd "K" Top
CTR Hdwl



County Wood S.R. U.S.23

Township Perry

Section 12

T3N, R12E

Personnel HOFFMAN

Loehrke

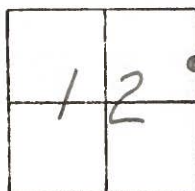
Householder

#17 - 18

Date 7-28-81

Weather cloudy

Temp. +75°



Pt. "A" Fd. P.K. @ surface S.L.M. = 252+27

12.1' to W. E.P.

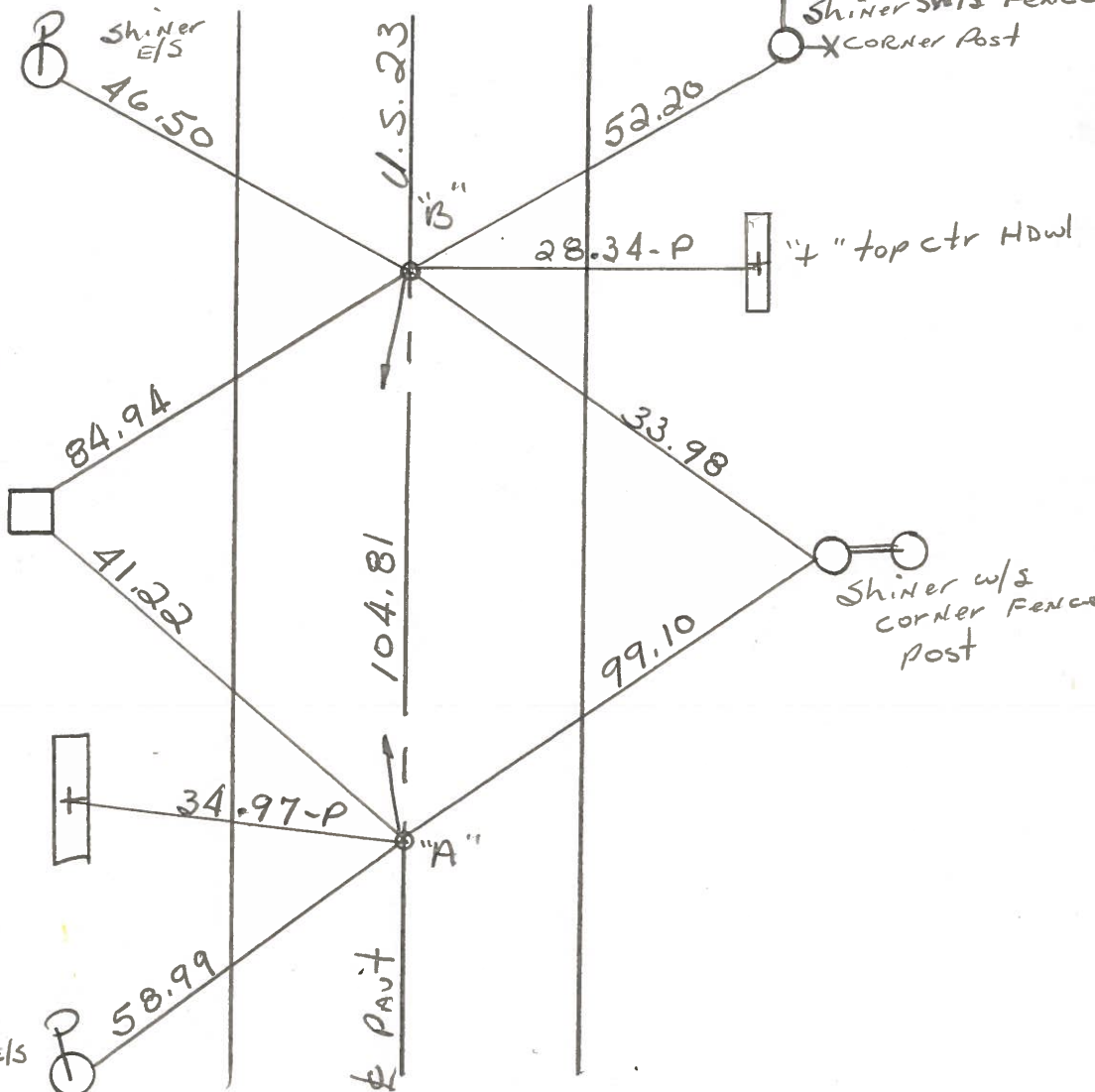
11.9' to E. E.P.

SET P.K./WASHER
@ BOTH POINTS
9-21-83
S.W.H.

Pt. "B" Fd. P.K.
@ surface

12.0' to W. E.P.

12.1' to E. E.P.



NEAR SIDE
2' up CONC.
CORNER POST

"4" top ctr.
HDWL

Pt. "B" STA. 239 + 26.61 — Rec. 2

Pt "A" STA. 238 + 21.8 - Δ = 0° - 18' Lt

County WOOD S.R. 23

Township PERRY

Section 12

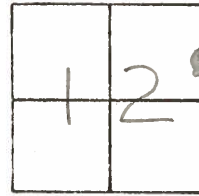
T3N, R12E

Personnel: BURNSIDE
HOFFMAN

Date 9-1-70-OK
9-15-71-OK

Weather _____

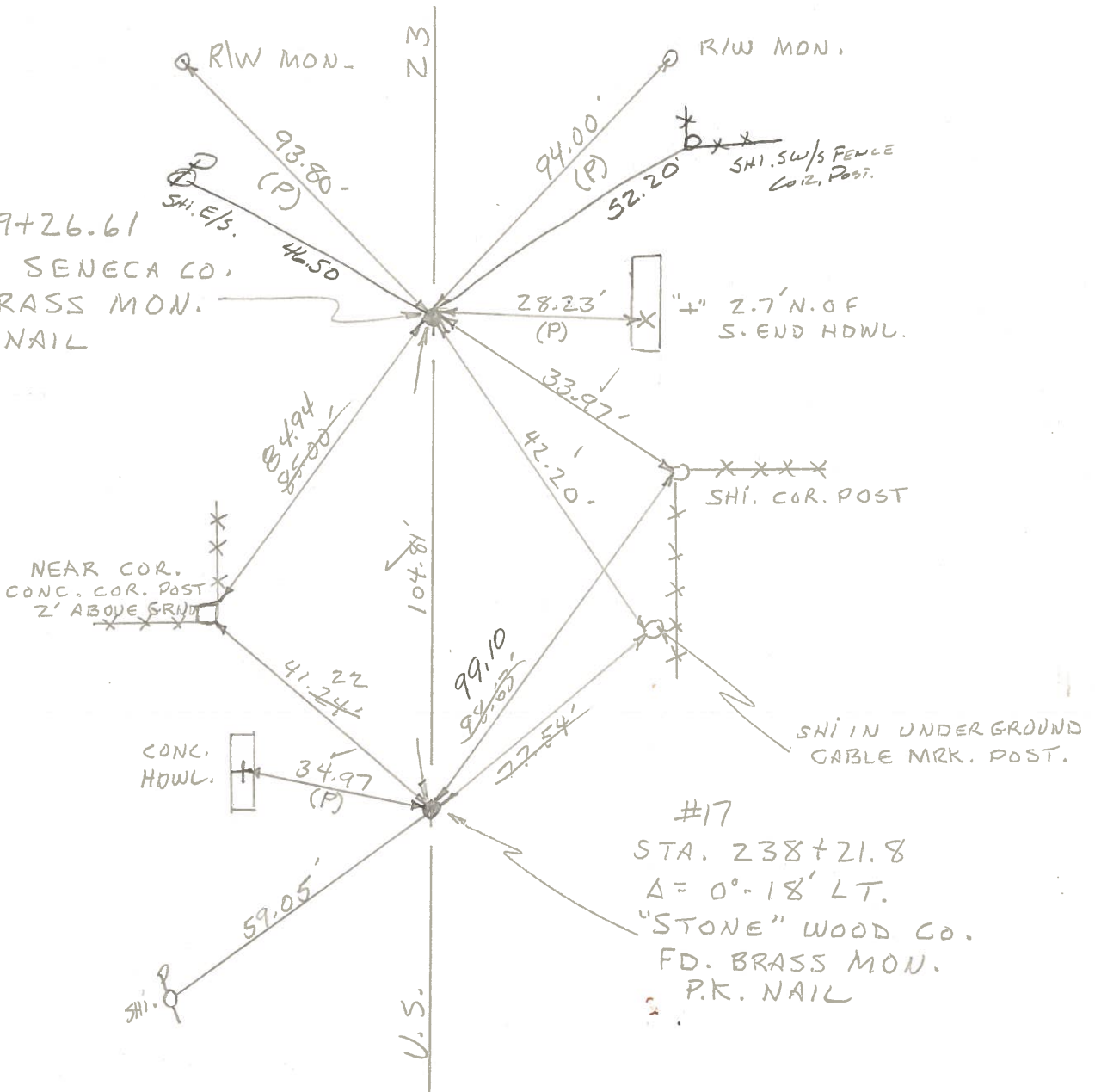
Temp. _____



#17 - #18

#18
STA. 239+26.61
"STONE" SENECA CO.
FD. BRASS MON.
P.K. NAIL

#17
STA. 238+21.8
Δ = 0°-18' LT.
"STONE" WOOD CO.
FD. BRASS MON.
P.K. NAIL



PERSONNEL TITLE PERSONNEL TITLE

CK. BY
BURNSIDE
HOFFMAN

COUNTY Wood

DATE OK-9-1-70
OK-9-15-71

S. R. U.S. #23

WEATHER

SEC. FOSTORIA - NORTH

TEMP.

DESCRIPTION

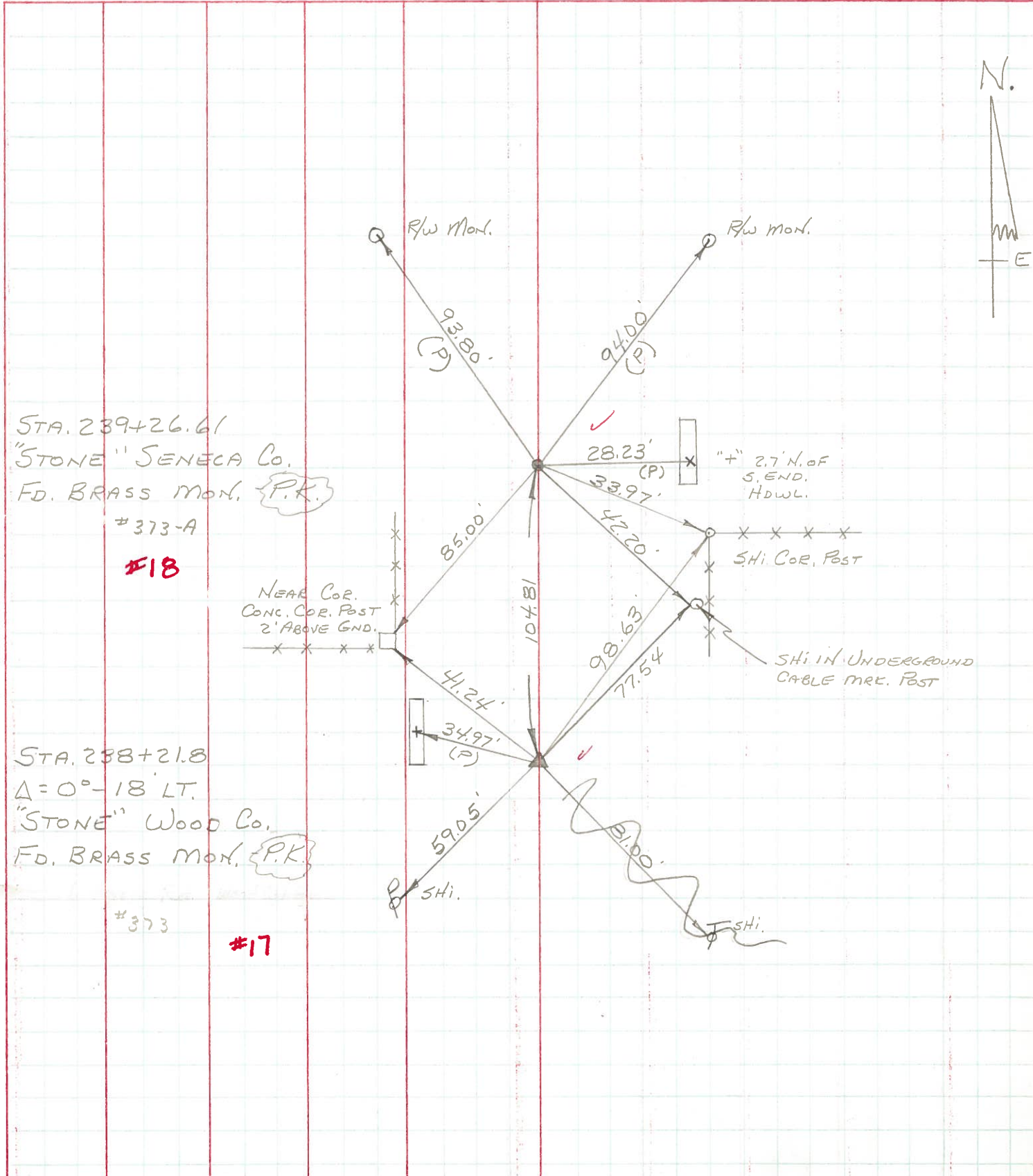
CONTROL TIES

JOB NO.

LEFT

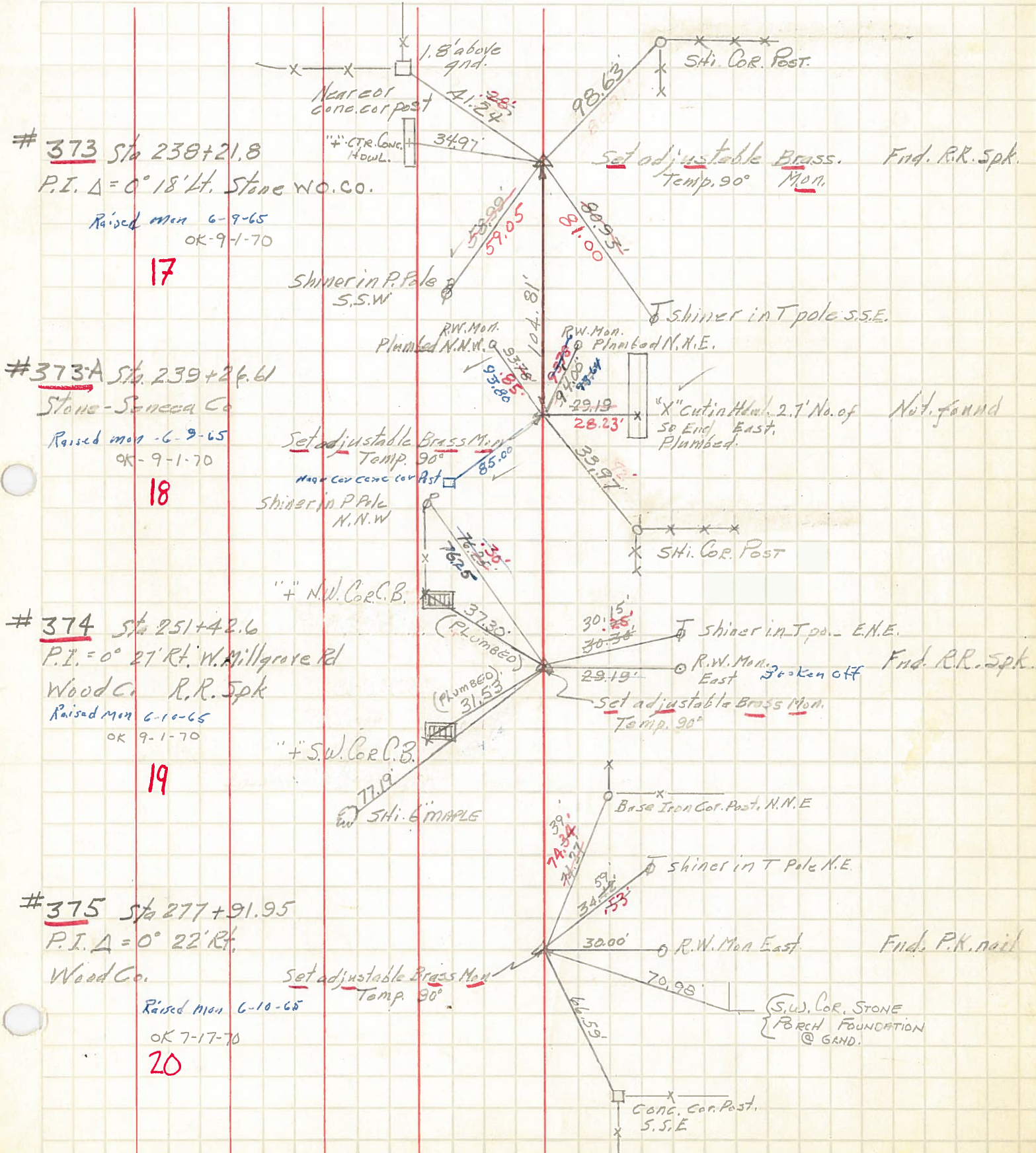
CENTER LINE

RIGHT



PERSONNEL	TITLE	PERSONNEL	TITLE	COUNTY	DATE
Jameson		Burns		Wood-Seneca	6-22-61
Powers		Heyman			2-7-64
Garno				S. R. 199 SH 529	WEATHER 75
Dolph				SEC. A	TEMP. Fair

DESCRIPTION Monument Location JOB NO. _____



17

18

19

20