

O.D.O.T. DISTRICT 2 SURVEY OFFICE (USE ONLY)

PERSONNEL

REFERENCE NO. 21

SHEET 21 OF 22

NOTES RHOADES

DATE 5/7/19

ROUTE US 23

H.C. O'DONNELL

WEATHER CLOUDY

COUNTY WOOD

R.C. MILLER

TEMP. 50°

TOWNSHIP MONTGOMERY

DWG BY BALBAUGH PID 92134

SECTION 36

T 4 N R 12 E

TYPE MONUMENT P.K.NAIL

~~ON SURFACE~~ - BELOW 3"

OFFSET  $\odot$  PAVEMENT 0.5' LT : ~~RT~~

- TO - EDGE PAVEMENT

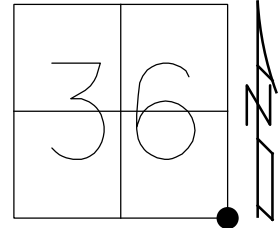
STATION: 317+85.60

HORZ.DATUM: NAD83 (2011)

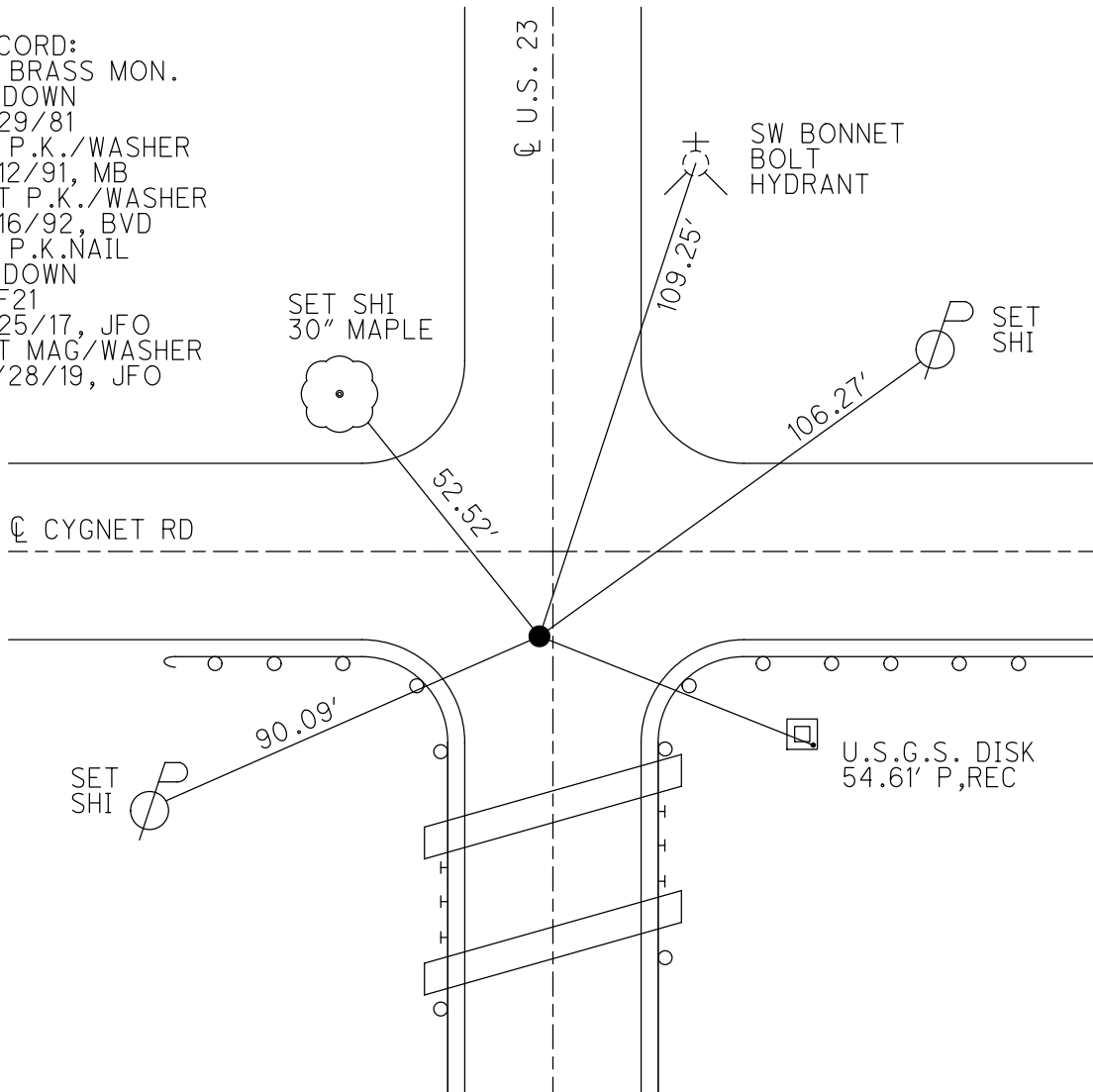
GEOID: 2012A

GRID: NORTHING: 579622.267

EASTING: 1715586.533



RECORD:  
 FD BRASS MON.  
 2" DOWN  
 7/29/81  
 FD P.K./WASHER  
 8/12/91, MB  
 SET P.K./WASHER  
 4/16/92, BVD  
 FD P.K.NAIL  
 3" DOWN  
 REF21  
 8/25/17, JFO  
 SET MAG/WASHER  
 10/28/19, JFO



# O.D.O.T. DISTRICT 2 SURVEY OFFICE

PERSONNEL \_\_\_\_\_

REFERENCE NO. 21

SHEET 11 OF 23

NOTES BARNHISEL

H.C. VAN DUSEN

R.C. KUSZ

DATE 8-12-91

WEATHER SUNNY

TEMP. +83°

ROUTE U.S. 23

COUNTY WOOD

TOWNSHIP MONTGOMERY

SECTION 36

T. 4 N. R. 12 E.

TYPE MONUMENT P.K. & Washer

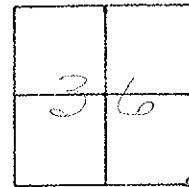
ON SURFACE - BELOW YES

LEFT - C PAV'T. - RIGHT 0.5

- TO - EDGE PAVEMENT

S.L.M. 318+07

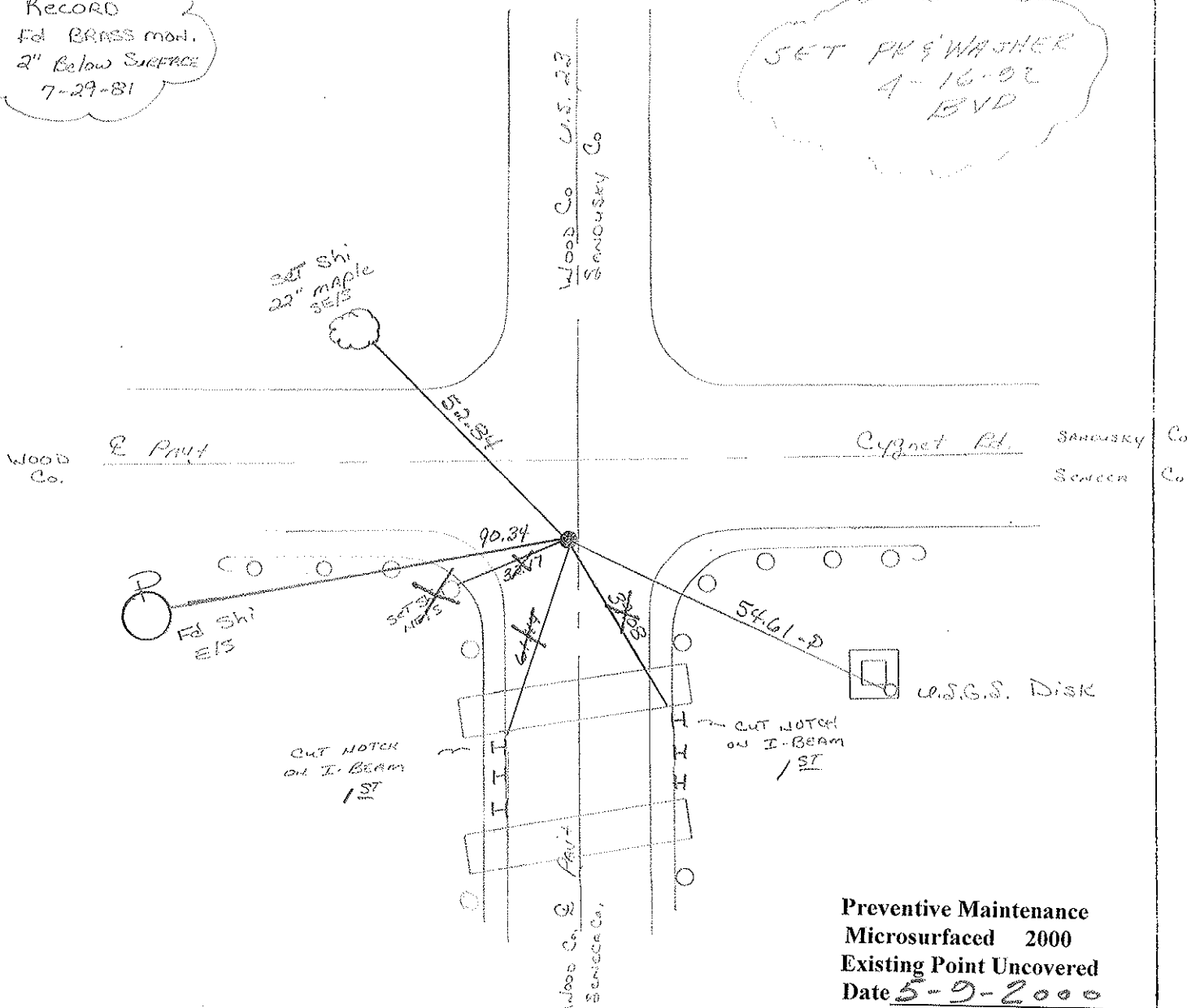
17.0 S. OF E. Cygnet Rd



RECORD

Fd BRASS mon.  
2" Below SURFACE  
7-27-81

SET PK & WASHER  
4-16-92  
BVD



Preventive Maintenance  
Microsurfaced 2000  
Existing Point Uncovered  
Date 5-9-2000

County Wood S. R. U.S. 23

Township Montgomery

Section 36

T4N, R12E

Personnel HOFFMAN

Loehrke

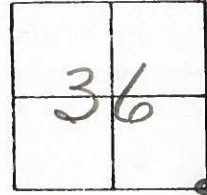
Householder

#21

Date 7-29-81

Weather Partly Cloudy

Temp. +70°



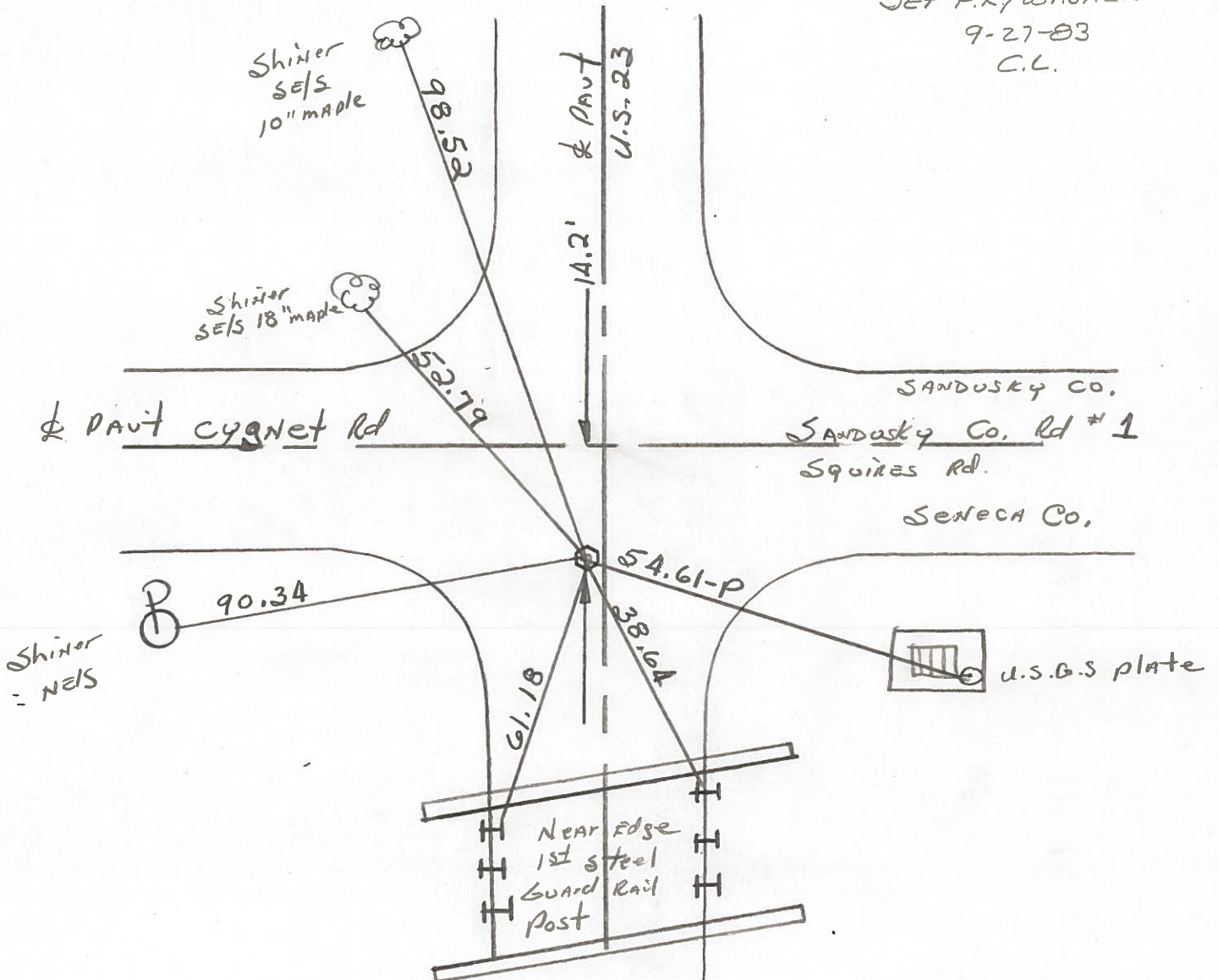
Fd. BRASS MONUMENT 2" Below surface, 0.50' w. of & PAVT U.S. 23

S.L.M. = 318 + 68

SET P.K./WASHER

9-27-83

C.L.



County WOOD ~~S.R.~~ 23

Date 7-17-70

Township PERRY-MONTGOMERY

Weather \_\_\_\_\_

Section 36

Temp. \_\_\_\_\_

T4N, R12E

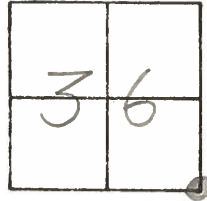
Personnel BURNSIDE

HOFFMAN

\_\_\_\_\_

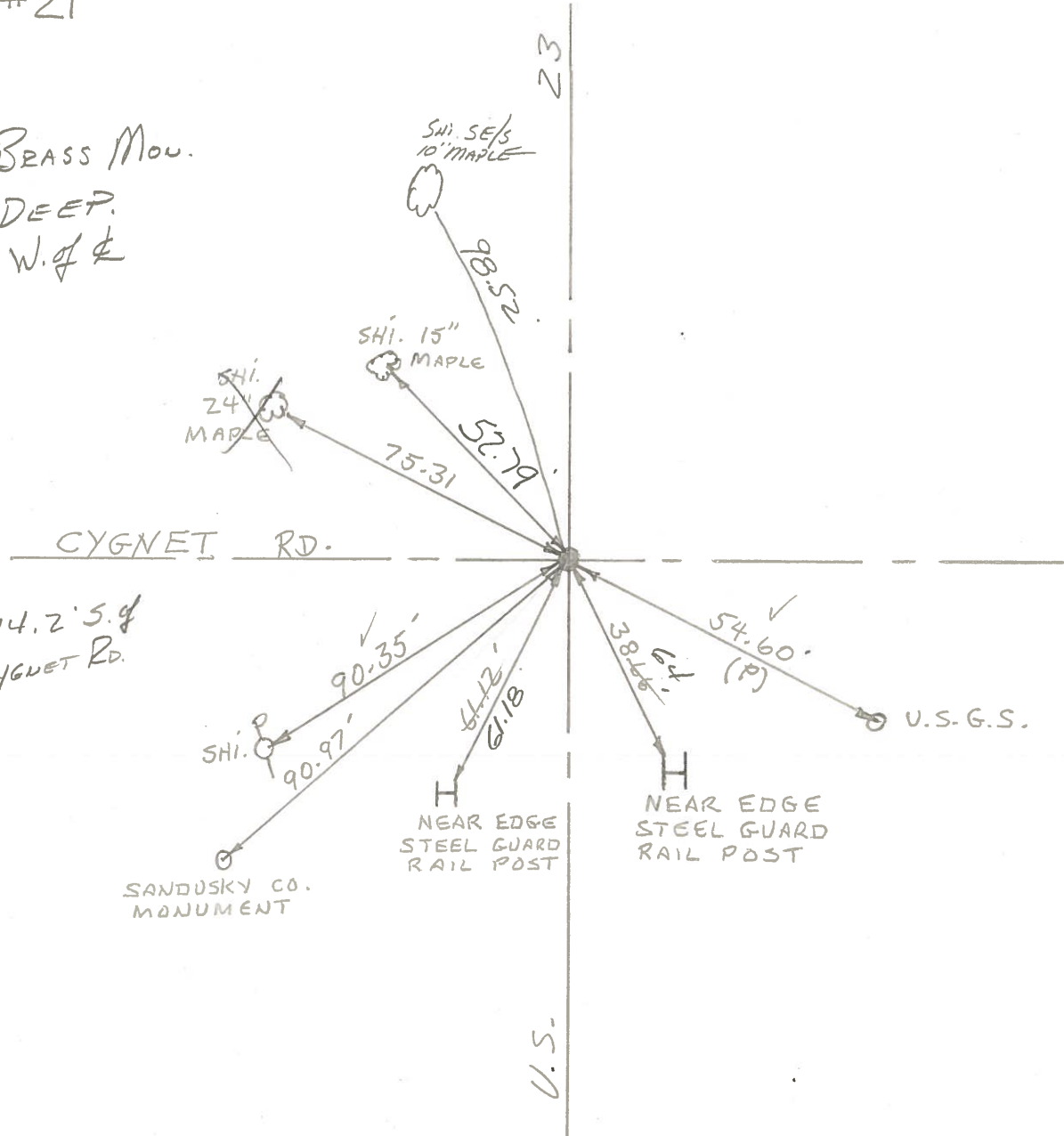
\_\_\_\_\_

\_\_\_\_\_



#21

FD. BRASS MON.  
 2" DEEP.  
 .50 W. of  $\perp$



14.2' S. of  
 CYGNET RD.

SANDUSKY CO.  
 MONUMENT

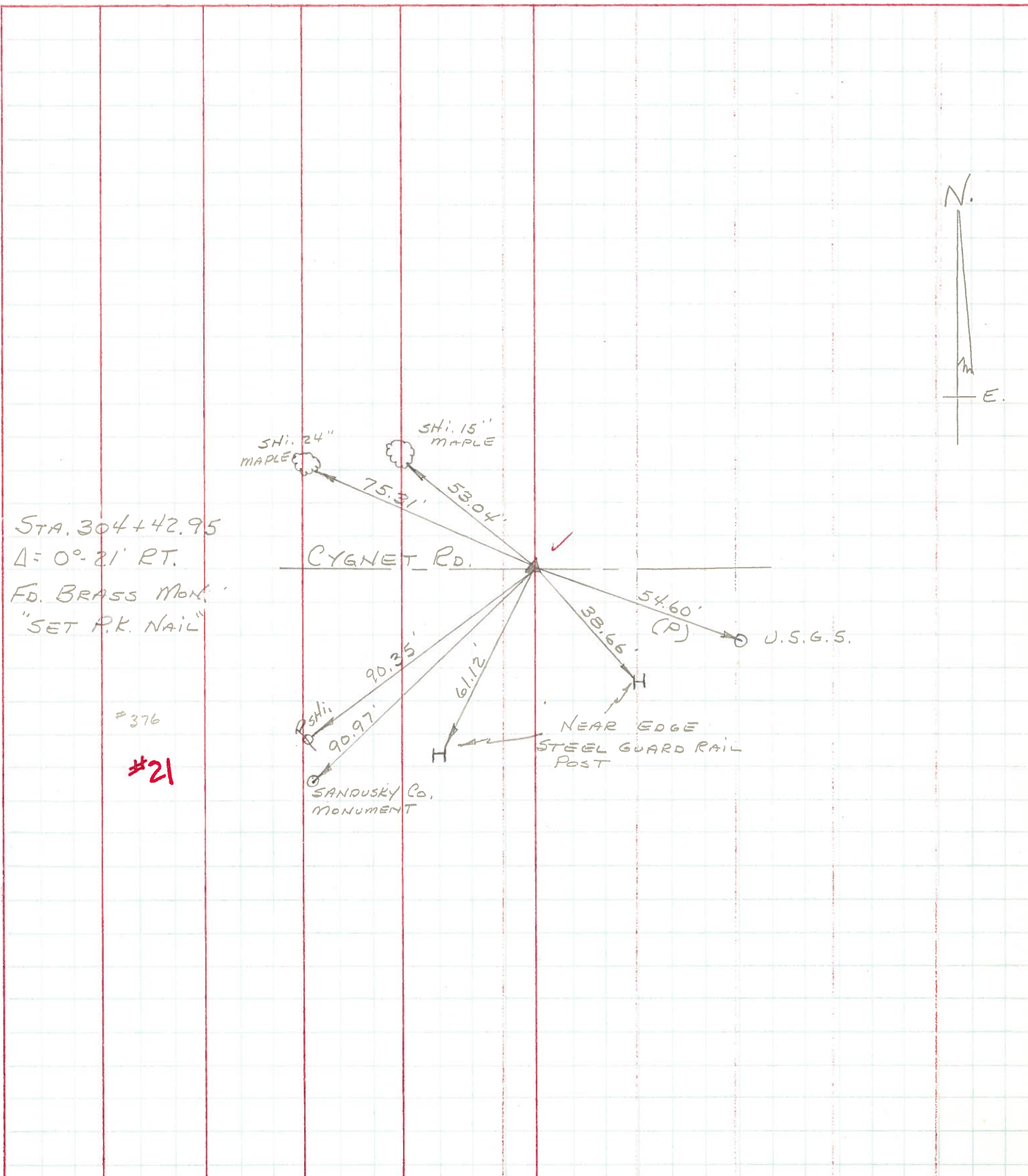
NEAR EDGE  
 STEEL GUARD  
 RAIL POST

NEAR EDGE  
 STEEL GUARD  
 RAIL POST

U.S.

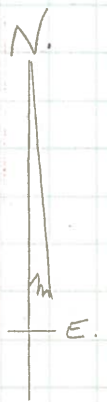
PERSONNEL TITLE PERSONNEL TITLE COUNTY WOOD DATE OK-7-17-70  
CK. BY  
BURNSIDE  
HOFFMAN  
 S. R. U.S. #23 WEATHER \_\_\_\_\_  
 SEC. CYGNET ROAD TEMP. \_\_\_\_\_

DESCRIPTION CONTROL TIES JOB NO. \_\_\_\_\_



STA. 304+42.95  
 $\Delta = 0^{\circ} 21' RT.$   
 FD. BRASS MON.  
 "SET P.K. NAIL"

#376  
**#21**



PERSONNEL TITLE PERSONNEL TITLE COUNTY Sandusky DATE \_\_\_\_\_  
 Recorded in Stone Record S. R. #199 WEATHER \_\_\_\_\_  
Jan 19 65 SEC San Cor #1 to S.R #6 TEMP. \_\_\_\_\_

DESCRIPTION Control Point Ties & R/W JOB NO. \_\_\_\_\_

LEFT	CENTER LINE	RIGHT
<p>Co Ref #21 → Co Rd 11 East</p> <p>Stone from old References - R.R Spk over top (S.W.E, 1957)</p> <p>Ref. Points            W.S.W to N.E Cor Conc. Blk Garage - 63.53            N.W to S.E Cor Brk. Store Front - 66.82            S.S.W to East Cor Conc. Blk. Garage - 65.83'            E to '4' cut in curb - 14.38'</p>	<p>60.50'</p>	<p>R.R Spike over stone - from old References</p> <p>Ref Points - N.W to N.E Cor Conc. Blk. Bldg. - 65.2            S.W to S.E Cor Brk. Store Front - 77.13'</p> <p>Main st. west Co Ref #22</p>
<p>Co Ref #23            W 1/4 Sec 31</p> <p>R.R Spk over stone by state Hwy</p> <p>Ref Mens. W - 37.2' E E 40.62' N E 73.15'</p>	<p>60.50'</p>	<p>R.R Spk. set at offset of 60.50 on old fence line</p> <p>Ref Mens. E - 39.51' - S.E 82.06 N.W 81.20'            S.S.W. 73.80'</p> <p>Co Ref #24 E 1/4 Sec. 36</p>
<p>Co Ref #25</p>	<p>Cyren Rd</p>	<p>Co Rd #1 Brass on with '4' on top over stone - from old references</p> <p>Mens            SW - 91.00'            - to USGS Disc in MH top - 54.71'            SSW to '4' in West end of No Bridge Abut - 61.38            SSE to '4' in east end of " " " - 36.82</p>

PERSONNEL	TITLE	PERSONNEL	TITLE	COUNTY	DATE	WEATHER	TEMP.
JAMESON		BURNS		Wood-Sensaba	6-22-61		
Bowers		Heyman			2-7-64	Fair	
Garno				S. R. 199 SH 529			
Delph				SEC. A			75°

DESCRIPTION \_\_\_\_\_ LEFT \_\_\_\_\_ CENTER LINE \_\_\_\_\_ RIGHT \_\_\_\_\_ JOB NO. \_\_\_\_\_

