

O.D.O.T. DISTRICT 2 SURVEY OFFICE (USE ONLY)

PERSONNEL

REFERENCE NO. 22

SHEET 27 OF 46

NOTES RHOADES

DATE 4/20/21

ROUTE US 23

H.C. O'DONNELL

WEATHER SUNNY

COUNTY WOOD

R.C. KETNER

TEMP. 38°

TOWNSHIP MONTGOMERY

AUBLE

SECTION 36

DWG BY RHOADES PID 102922

T 4 N R 12 E

TYPE MONUMENT MAG NAIL

~~ON SURFACE~~ - BELOW ON

OFFSET 0.5' PAVEMENT LT : ~~RT~~

12.6' TO LT EDGE PAVEMENT

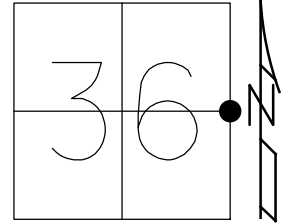
STATION: 344+16.91

HORIZ. DATUM: NAD83 (2011)

GEOID: NAVD88 2012A

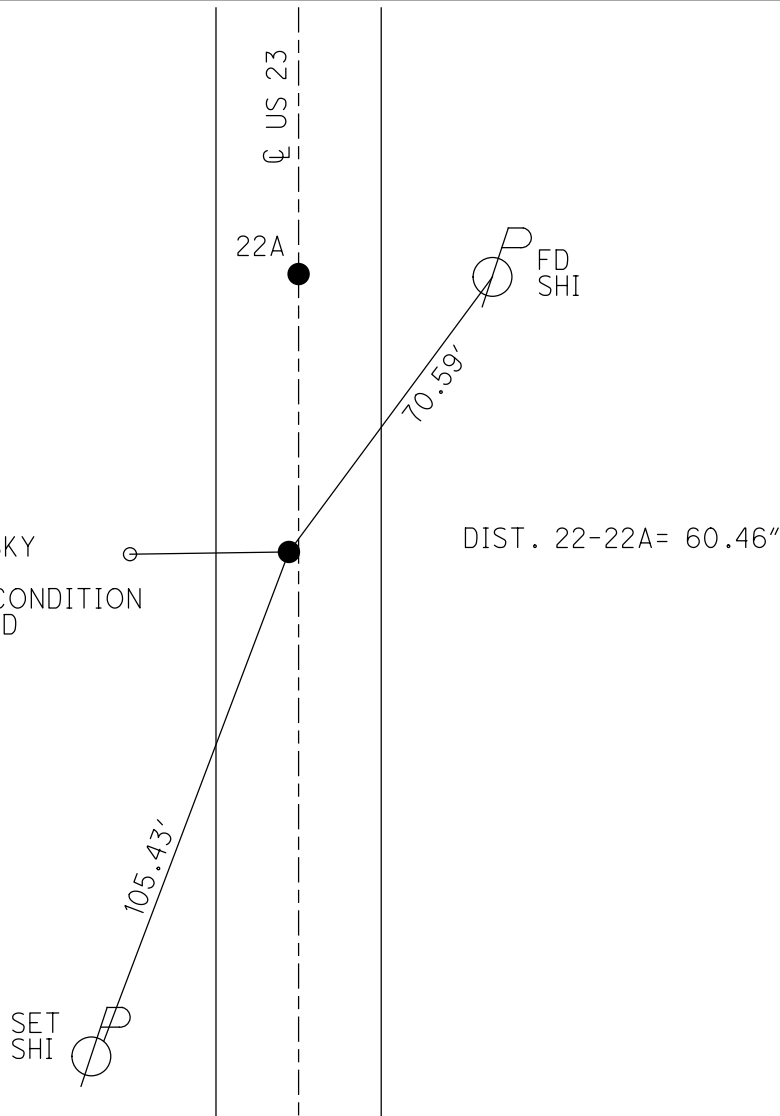
GRID: NORTHING: 582251.999

EASTING: 1715677.770



RECORD:  
 $\Delta = 0^{\circ}04' \text{ LT}$   
 STA. 330+74.75  
 FD P.K./WASHER  
 8/12/91, MB  
 SET P.K./WASHER  
 4/16/92, BVD  
 FD P.K./WASHER  
 5/9/00  
 FD MAG NAIL  
 REF22  
 8/25/17, JFO  
 FD MAG NAIL  
 4/20/21, JFO  
 SET MAG/WASHER  
 9/23/22, DSA

SANDUSKY  
 CMON  
 POOR CONDITION  
 37.53' D



O.D.O.T. DISTRICT 2 SURVEY OFFICE (USE ONLY)

PERSONNEL \_\_\_\_\_ REFERENCE NO. 22 SHEET 22 OF 22  
 NOTES RHOADES DATE 8/25/17 ROUTE US 23  
 H.C. O'DONNELL WEATHER FOGGY COUNTY WOOD  
 R.C. MILLER TEMP. 71° TOWNSHIP MONTGOMERY  
 DWG BY BALBAUGH PID 92134 SECTION 36  
 T 4 N R 12 E

TYPE MONUMENT MAG NAIL

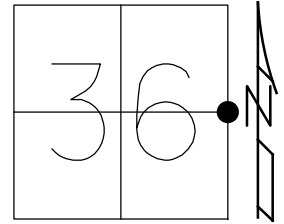
~~ON SURFACE~~ - BELOW ON

OFFSET 0.5' LT : ~~RT~~  
12.6' TO LT EDGE PAVEMENT

STATION: 344+16.91

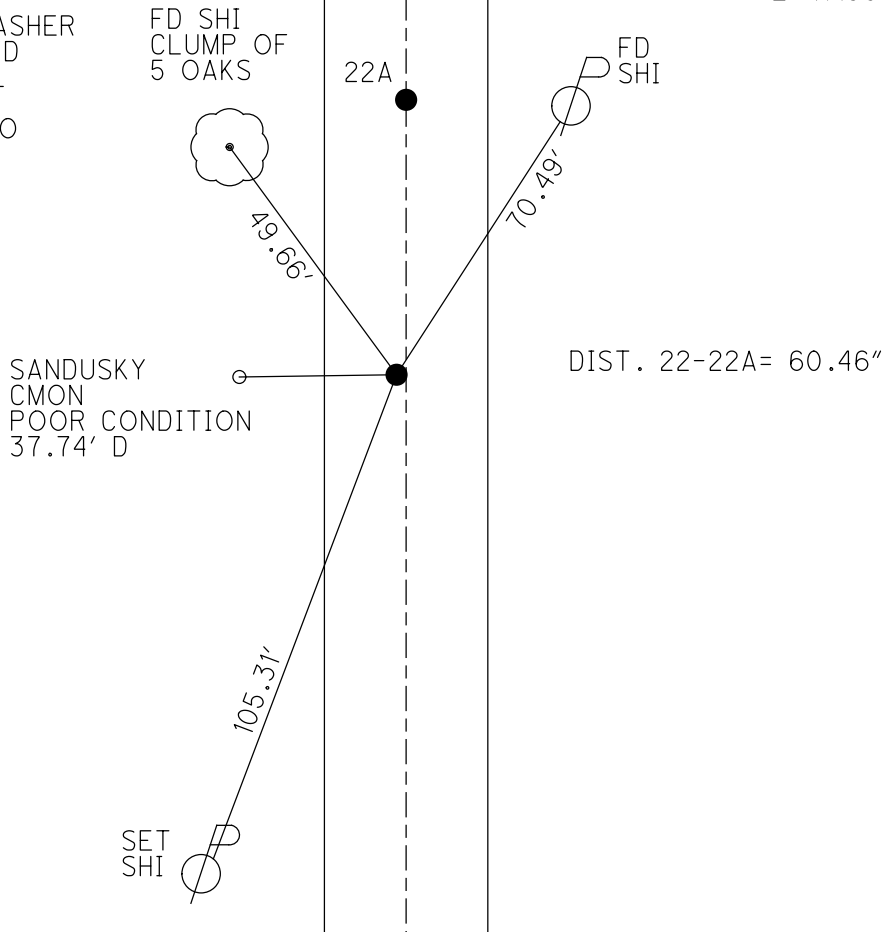
HORIZ.DATUM: NAD83 (2011) GEOID: 2012A

GRID: NORTHING: 582251.999 EASTING: 1715677.770



RECORD:  
 $\Delta = 0^{\circ}04' LT$   
 STA. 330+74.75  
 FD P.K./WASHER  
 8/12/91, MB  
 SET P.K./WASHER  
 4/16/92, BVD  
 FD MAG NAIL  
 REF22  
 8/25/17, JFO

FD MAG NAIL  
 REFA22  
 N: 582312.427  
 E: 1715679.740



# O.D.O.T. DISTRICT 2 SURVEY OFFICE

PERSONNEL \_\_\_\_\_

REFERENCE NO. 22

SHEET 12 OF 23

NOTES BAENHISEL

H.C. VAN DUSEN

R.C. \_\_\_\_\_

DATE 8-12-91

WEATHER SUNNY

TEMP. +83°

ROUTE U.S. 23

COUNTY Wood

TOWNSHIP Montgomery

SECTION 36

T 4 N R 12 E

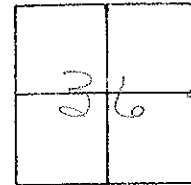
TYPE MONUMENT P.K. & WASHER

ON SURFACE - BELOW YES

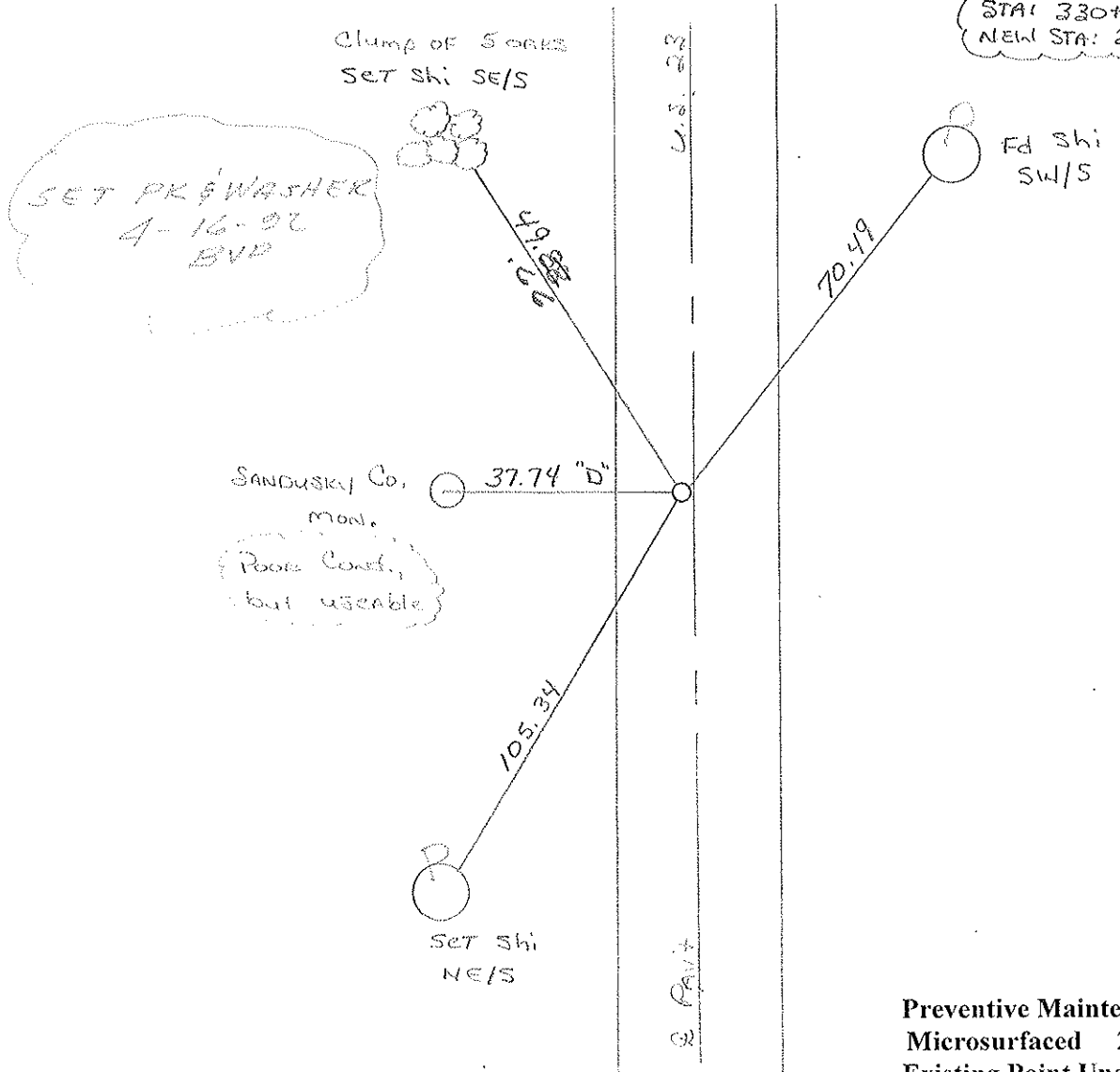
LEFT- & PAV'T. - RIGHT 0.5

12.6 TO LT EDGE PAVEMENT

S.L.M. 344+41



Record:  $\Delta = 0^{\circ}01'17''$   
 STA:  $330+74.75 =$   
 NEW STA:  $344+16.95$



Preventive Maintenance  
 Microsurfaced 2000  
 Existing Point Uncovered  
 Date 5-9-2000

County Wood S.R. U.S. 23

Date 7-29-81

Township Montgomery

Weather Partly Cloudy

Section 36

Temp. +70°

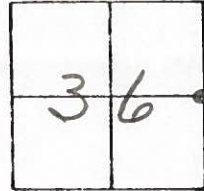
T4N, R12E

Personnel Hoffman

Loehrke

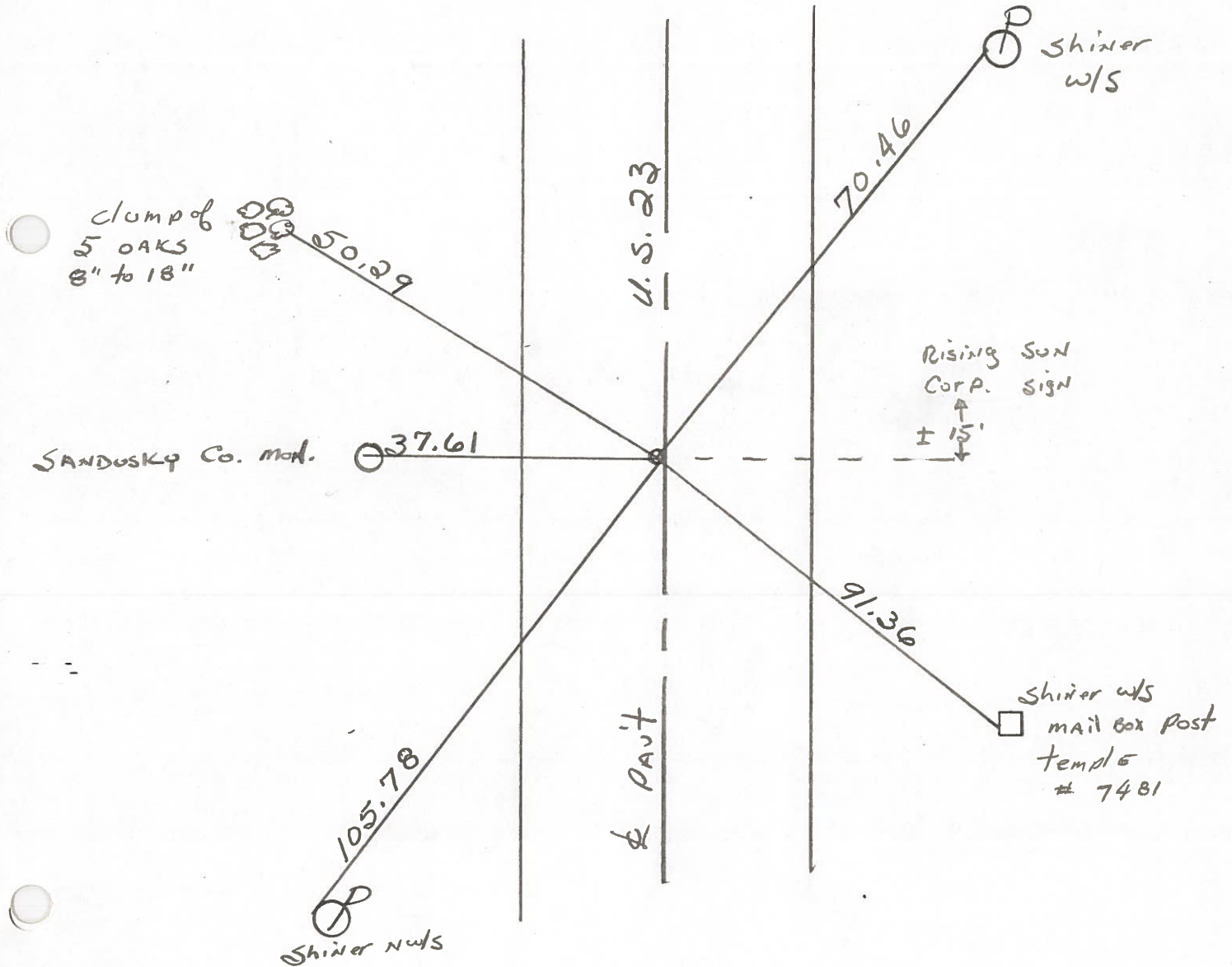
Householder

#22



Fd. P.K. @ surface, 0.5' w. of & PAUT.  
 12.2' to W.E.P.  
 12.0' to E.E.P.

S.L.M. = 345+01  
 SET P.K./WASHER  
 9/27/83  
 C.H.



Sta. 330 + 74.75 = New Survey Sta. 344 + 16.95 - Δ = 0° 04' Lt ~ Rec.

County WOOD <sup>U.S.</sup> ~~S.R.~~ 23

Date 7-17-70

Township MONTGOMERY

Weather \_\_\_\_\_

Section 36

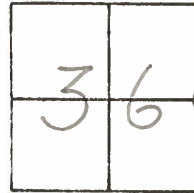
Temp. \_\_\_\_\_

T4N, R1E

Personnel SILVESTER

BURNSIDE

HOFFMAN



#22

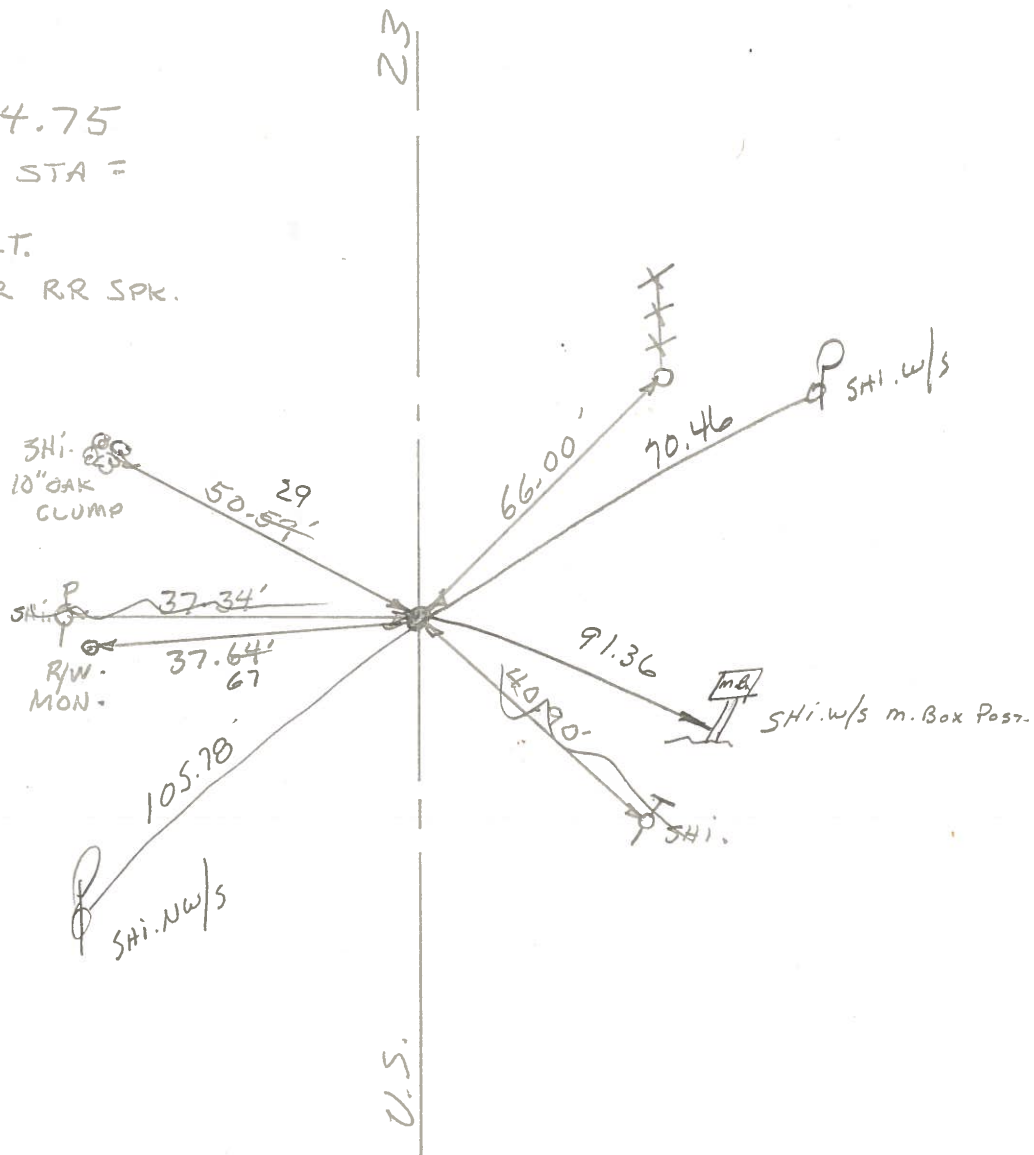
STA. 330+74.75

NEW SURVEY STA =

344+16.95

$\Delta = 0^{\circ} - 04' \text{ LT.}$

P.K. NAIL OVER RR SPR.



COPIED

PERSONNEL TITLE PERSONNEL TITLE

CK. BY

COUNTY Wood

DATE OK-7-17-70

SILVESTER

S. R. U.S. #23

WEATHER

BURNSIDE

SEC.

TEMP.

HOFFMAN

DESCRIPTION

CONTROL TIES

JOB NO.

LEFT

CENTER LINE

RIGHT

FOUND NAIL SHINER ✓  
85.78' N. OF S.E. COR.

SHINER BRACE POLE N.E. 41.27'  
SHINER P. POLE S.E. 56.90'

SEC. 25 MONTGOMERY  
TWP.

Co. ROAD EAST #24 COPIED  
#378-A

STA. 357+48.85 ✓  
NEW SURVEY STA. =  
370+90.32

"X" - S.E. END PUMP ISLAND S.W. 48.52'  
"X" TOP OF CURB E. 14.38'  
S.E. COR. BRICK BLDG. N.W. 66.82'

Δ = 0° 02' RT.  
S.E. COR. SEC. 25  
MONTGOMERY TWP.

R.R. SPK - SET P.K.  
MAIN ST. IN RISING SUN  
#378

#23 COPIED

STA. 330+74.75 ✓  
NEW SURVEY STA. =  
344+16.95

SHI. IN POLE W. 37.34'  
SHI. IN 10' OAK CLUMP N.W. 50.59'  
R/W MON. W. 37.64'  
SHI. IN T. POLE S.E. 40.90'  
SHI IN FENCE BRACE POST N.E. 66.00'

Δ = 0° 04' LT  
E 1/4 POST SEC 36  
MONTGOMERY TWP.  
R.R. SPK. - SET P.K.

#377  
#22 COPIED

PERSONNEL TITLE PERSONNEL TITLE

COUNTY Wood

DATE OK 12-10-57

S. R. #199

WEATHER

SEC.

TEMP.

DESCRIPTION

LEFT

CENTER LINE

RIGHT

JOB NO.

Sta. 330+74.75		Flu men	E	29.85
New Survey = 344+16.95		Shiner in 10' oak	N.W. 59.68	51.0'
$\Delta = 0^{\circ} 04'$ ft. checked 6-9-65		Flu men	W.	37.60 29.87'
E. 1/4 post sec. 36 Montgomery		Conc. fence post	N.W.	31.30'
Twp. R.R. spike		Shiner in T.P.	S.E.	41.00'
22 #377		Shiner in fence br post.	N.E. 66.00	66.15'

Sta. 357+48.85	OK	X-in S.E. end pump island	S.W.	48.52
New Survey = 370+90.32		Cor. porch fdn.	N.W.	65.05'
$\Delta = 0^{\circ} 02'$ ft. Main d County line sts (Rising Sun)		N.W. Cor. fdn. church	N.E.	45.42'
S.E. cor. sec. 25 Montgomery 6-9-65		N.W. Cor. 2nd step	S.E.	48.69'
Shiner over stone. fd. RR Spk.	OK	X-in top curb	E.	14.38'
23 #378	OK	S.E. cor. brick bldg.	N.W.	66.82'

Sta. 367+63.20	OK	S.E. cor. house fdn.	N.W.	53.31'
New Survey 381+04.62	gone	Spk in 18" maple	N.W.	34.28'
$\Delta = 0^{\circ} 02'$ ft. High St. d County line (Rising Sun)	gone	N.E. Cor. walk	S.W.	27.97'
R.R. spike over stone	OK	N.E. Cor. Porch <sup>5/16</sup> tan	S.W.	52.63'
P. K. nail	OK	E.S.E. to shi. in cable pole		47.25'
24A #379				

#380