

O.D.O.T. DISTRICT 2 SURVEY OFFICE (USE ONLY)

PERSONNEL

REFERENCE NO. 23

SHEET 29 OF 46

NOTES RHOADES DATE 4/20/22
 H.C. O'DONNELL WEATHER SUNNY
 R.C. KETNER TEMP. 38°
AUBLE

ROUTE US 23
 COUNTY WOOD
 TOWNSHIP MONTGOMERY
 SECTION 25
 T 4 N R 12 E

DWG BY RHOADES PID 102922

TYPE MONUMENT MAG/WASHER

ON SURFACE - ~~BELOW~~ ON

OFFSET ☉ PAVEMENT ON LT : RT

- TO - EDGE PAVEMENT

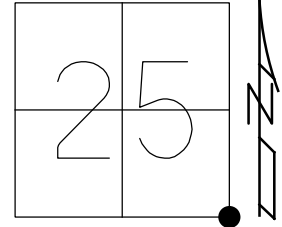
STATION: 370+90.09

HORZ.DATUM: NAD83(2011)

GEOID: 18

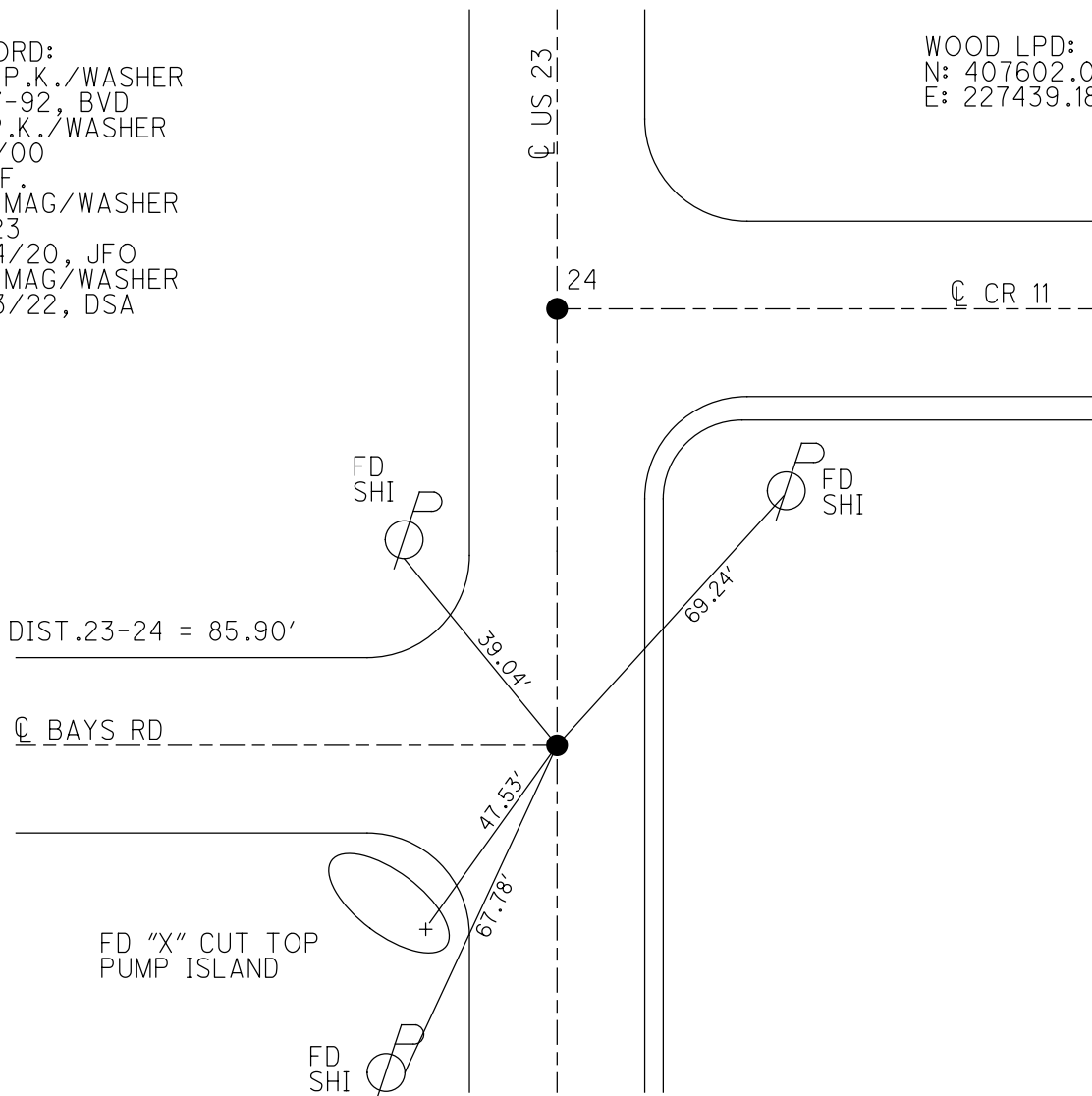
GRID: NORTHING: 584923.663

EASTING: 1715767.615



RECORD:
 SET P.K./WASHER
 4-27-92, BVD
 FD P.K./WASHER
 5/9/00
 D.N.F.
 SET MAG/WASHER
 REF23
 3/24/20, JFO
 SET MAG/WASHER
 9/23/22, DSA

WOOD LPD:
 N: 407602.002
 E: 227439.186



O.D.O.T. DISTRICT 2 SURVEY OFFICE (USE ONLY)

PERSONNEL

REFERENCE NO. 23

SHEET 29 OF 46

NOTES RHOADES

DATE 4/20/22

ROUTE US 23

H.C. O'DONNELL

WEATHER SUNNY

COUNTY WOOD

R.C. KETNER
AUBLE

TEMP. 38°

TOWNSHIP MONTGOMERY

DWG BY RHOADES PID 102922

SECTION 25

T 4 N R 12 E

TYPE MONUMENT MAG/WASHER

ON SURFACE - ~~BELOW~~ ON

OFFSET \odot PAVEMENT ON LT : RT

- TO - EDGE PAVEMENT

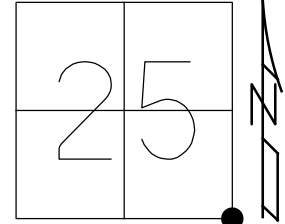
STATION: 370+90.09

HORZ. DATUM: NAD83(2011)

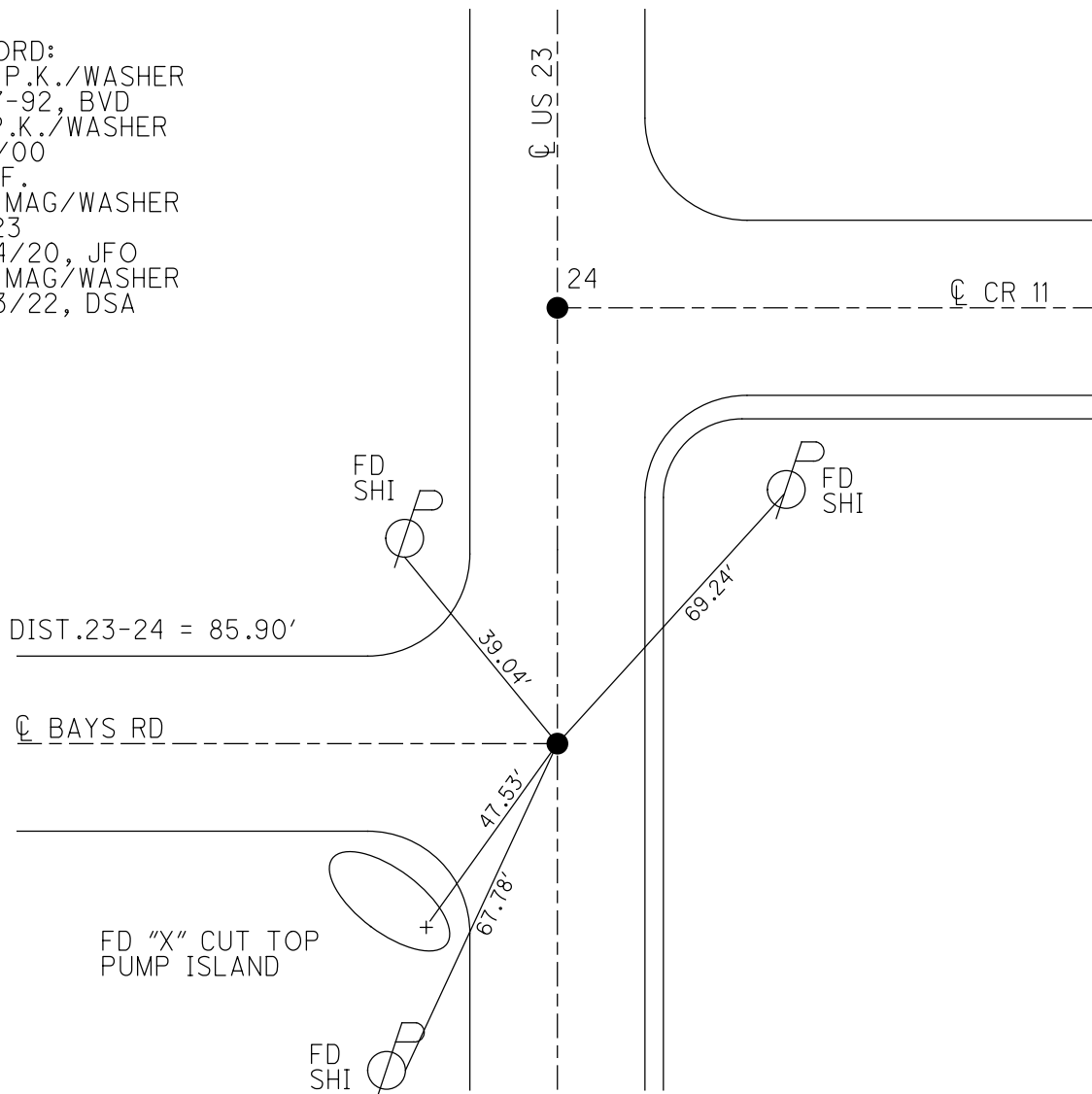
GEOID: NAVD88 2018

GRID: NORTHING: 584923.663

EASTING: 1715767.615



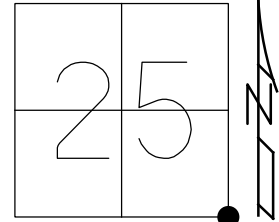
RECORD:
SET P.K./WASHER
4-27-92, BVD
FD P.K./WASHER
5/9/00
D.N.F.
SET MAG/WASHER
REF23
3/24/20, JFO
SET MAG/WASHER
9/23/22, DSA



O.D.O.T. DISTRICT 2 SURVEY OFFICE (USE ONLY)

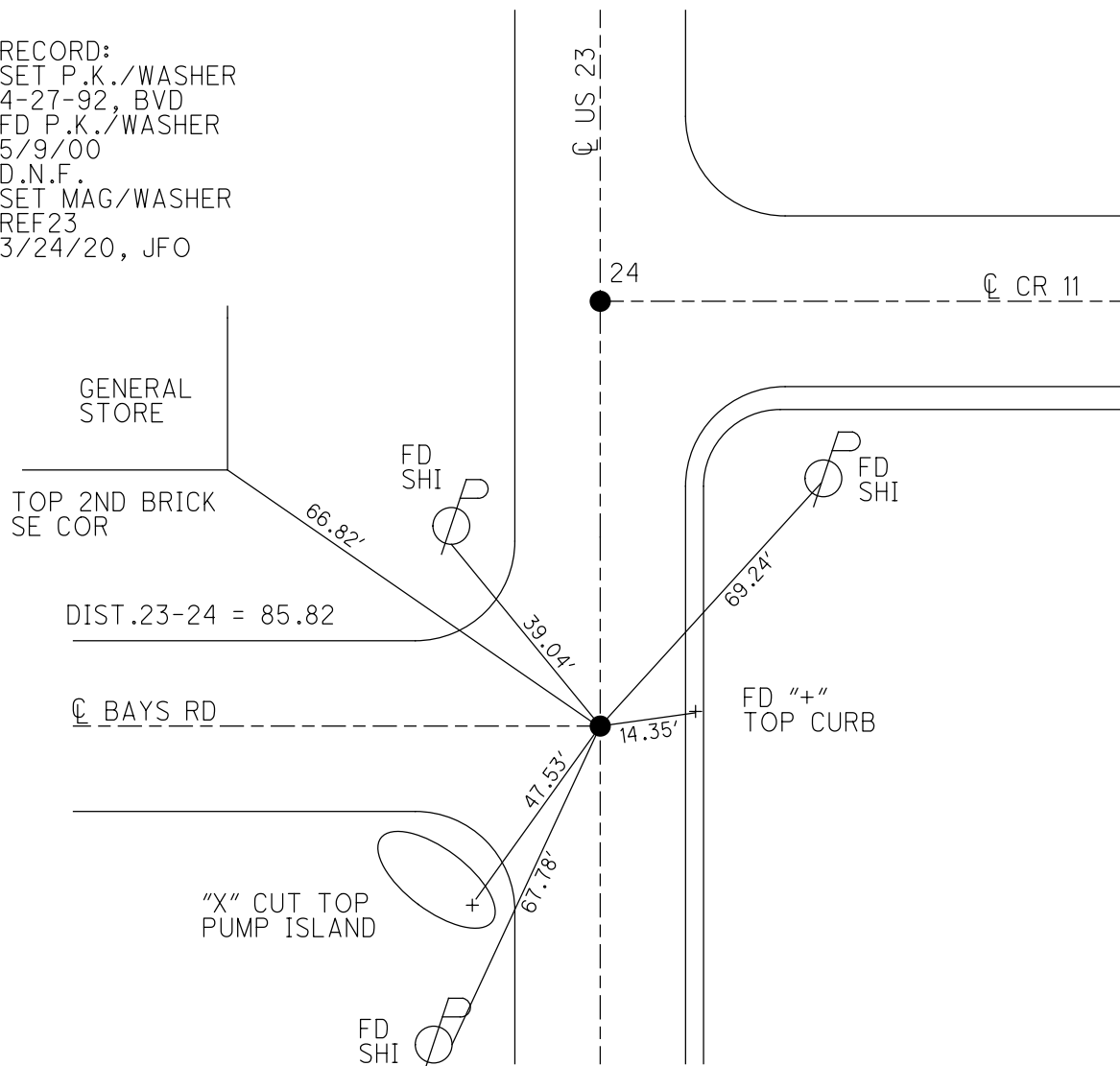
PERSONNEL _____ REFERENCE NO. 23 SHEET 23 OF 37
 NOTES BARNHESEL DATE 8/12/91 ROUTE US 23
 H.C. VAN DUSEN WEATHER SUNNY COUNTY WOOD
 R.C. _____ TEMP. 83° TOWNSHIP MONTGOMERY
 DWG BY AUBLE PID 102922 SECTION 25
 T 4 N R 12 E

TYPE MONUMENT P.K./WASHER
 ON SURFACE - ~~BELOW~~ ON
 OFFSET ☐ PAVEMENT ON LT : RT
- TO - EDGE PAVEMENT
 STATION: 371+15



HORZ. DATUM: NAD83(2011) GEOID: NAVD88 2018
 GRID: NORTHING: 584923.663 EASTING: 1715767.615

RECORD:
 SET P.K./WASHER
 4-27-92, BVD
 FD P.K./WASHER
 5/9/00
 D.N.F.
 SET MAG/WASHER
 REF 23
 3/24/20, JFO



O.D.O.T. DISTRICT 2 SURVEY OFFICE

PERSONNEL _____

REFERENCE NO. 23 & 24 SHEET 13 OF 23

NOTES BARNHISEL

H.C. VAN DUSEN

R.C. _____

DATE 8-12-91

WEATHER SUNNY

TEMP. +83°

ROUTE U.S. 23

COUNTY Wood

TOWNSHIP Montgomery

SECTION 25

T 4 R 12 E

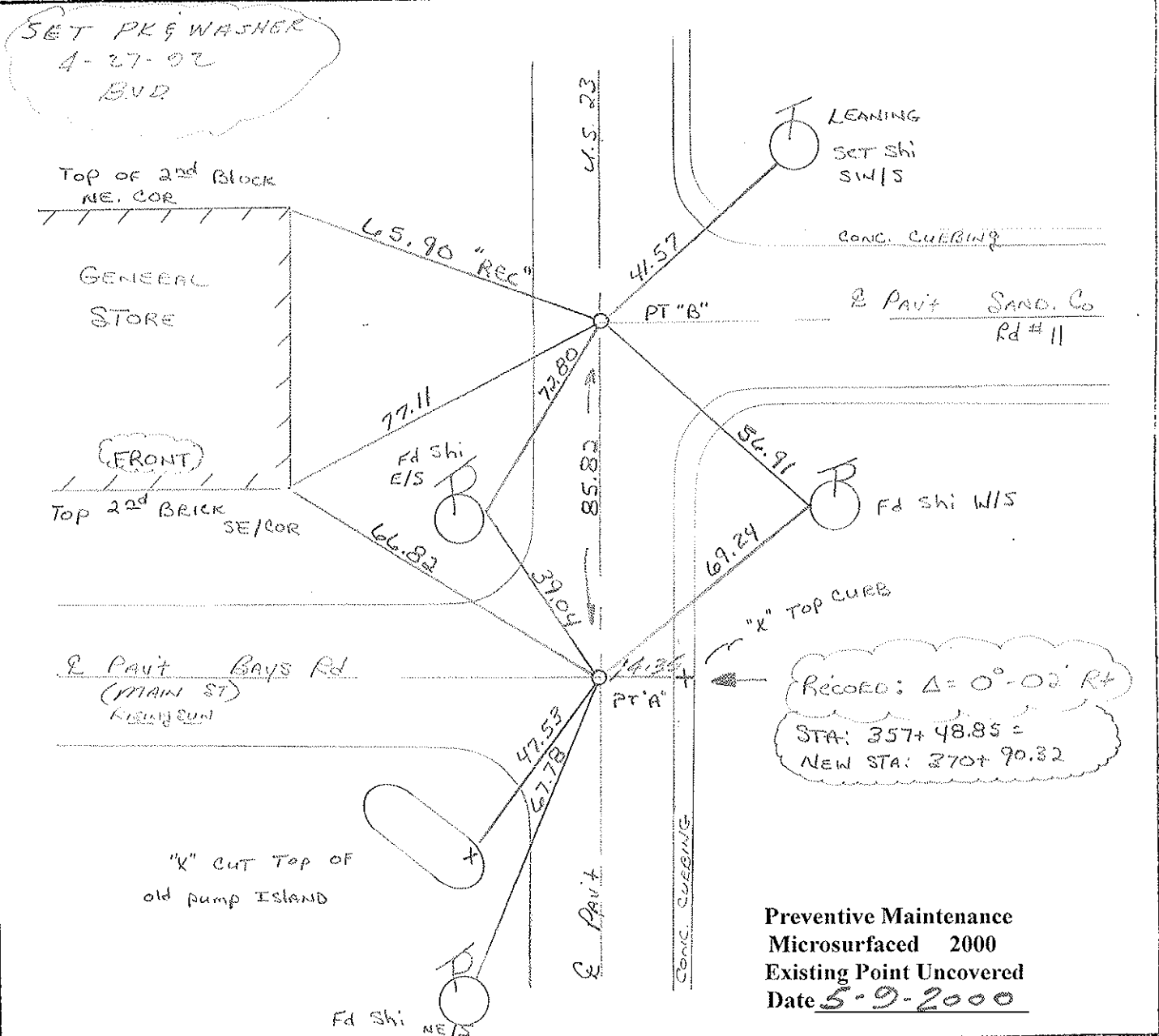
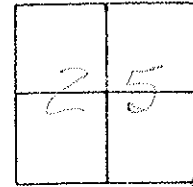
TYPE MONUMENT P.K.'s & WASHERS

ON SURFACE - BELOW yes "BOTH"

LEFT - & PAV'T. - RIGHT yes "BOTH"

- TO - EDGE PAVEMENT

S.L.M. 371+15 PT "A"



County Wood S.R.U.S. 23

Date 7-29-81

Township Montgomery

Weather Partly Cloudy

Section 25 - Rising Sun

Temp. +70°

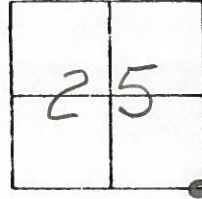
T4N, R12E

Personnel Hoffman

#23 - 24

Loehrke

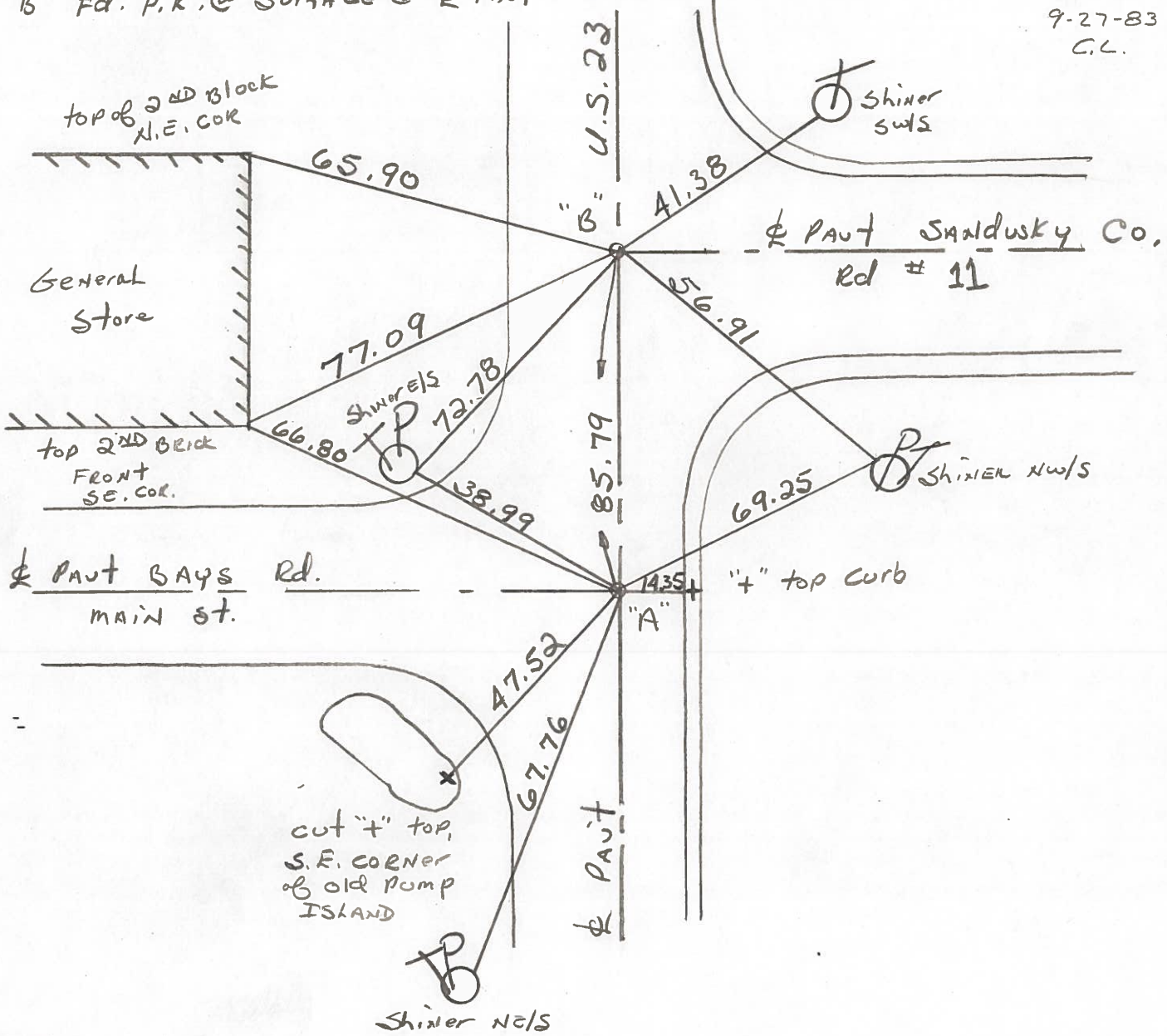
Householder



pt. "A" Fd. P.K. @ surface @ $\frac{1}{2}$ PAUT U.S. 23 $\frac{1}{2}$ 12.0' to E.E.P. S.L.M. = 371+81

SET P.K./WASHER 9-27-83 C.L.

pt. "B" Fd. P.K. @ surface @ $\frac{1}{2}$ PAUT U.S. 23



pt. "A" =
S.T.A. 357+48.85 = New Survey STA. 370+90.32 - Δ = 0°-02' Rt. spec.

ODOT. DISTRICT 2 SURVEY OFFICE

SHEET OF

County WOOD ^{U.S.} ~~S.R.~~ 23

Date 7-17-70

Township MONTGOMERY

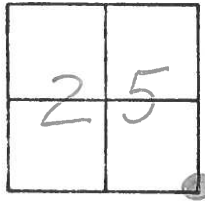
Weather _____

Section 25

Temp. _____

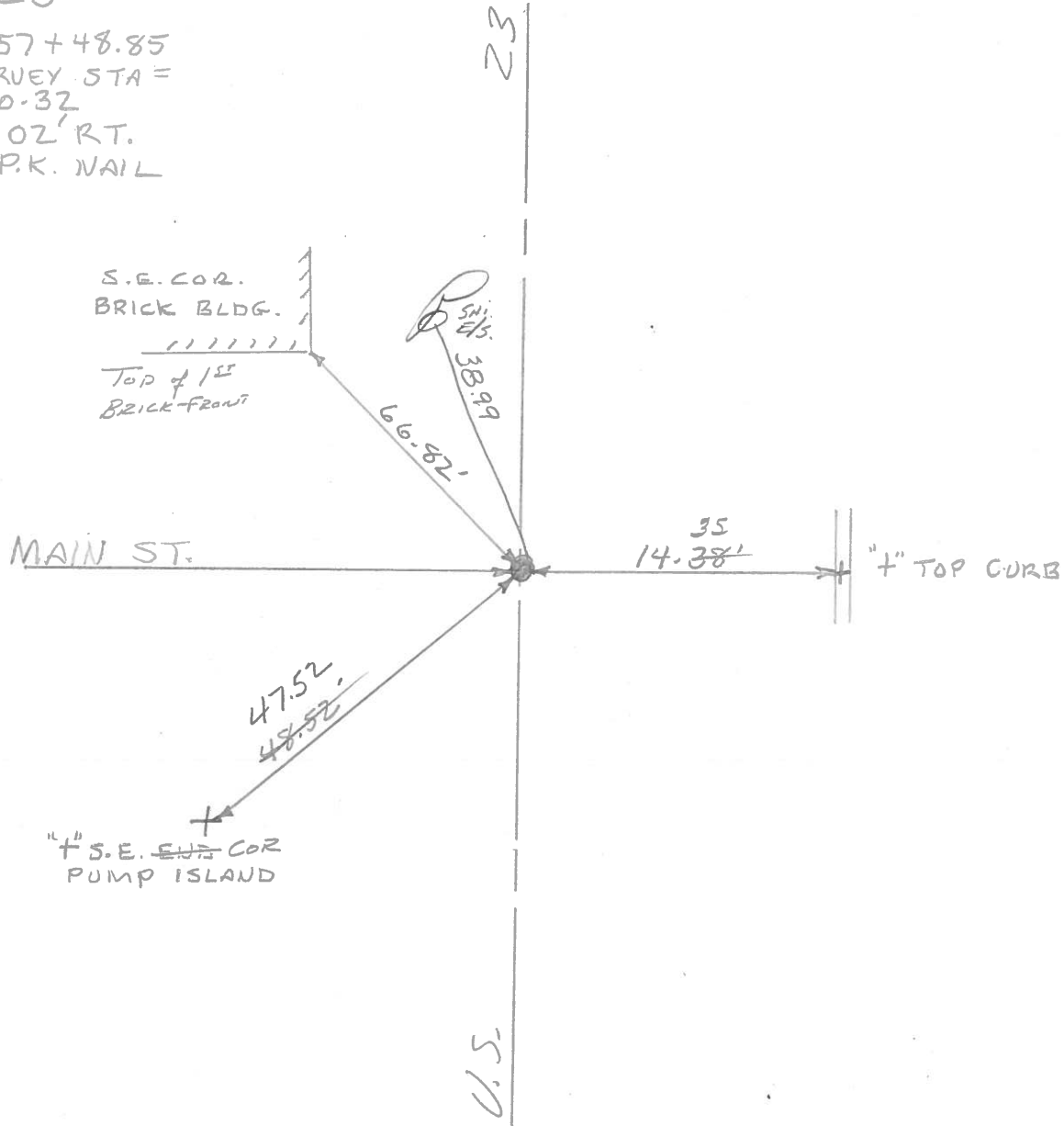
T4N, R12E

Personnel SILVESTER
BURNSIDE
HOFFMAN



23

STA. 357+48.85
NEW SURVEY STA =
370+90.32
 $\Delta = 0^{\circ} 02' RT.$
SET P.K. NAIL



COPIED

PERSONNEL TITLE PERSONNEL TITLE

CK. BY
 SILVESTER
 BURNSIDE
 HOFFMAN

COUNTY WOOD DATE OK-7-17-70
 S. R. U.S. #23 WEATHER _____
 SEC. _____ TEMP. _____

DESCRIPTION CONTROL TIES LEFT CENTER LINE RIGHT JOB NO.

FOUND NAIL & SHINER ✓
 85.78' N. OF S.E. COR.
 SEC. 25 MONTGOMERY
 TWP.
Co. ROAD EAST #24 COPIED
 #378-A

SHINER BRACE POLE N.E. 41.27
 SHINER P. POLE S.E. 56.90

STA. 357+48.85 ✓
 NEW SURVEY STA. =
 370+90.32
 $\Delta = 0^\circ - 02' RT.$
 S.E. COR. SEC. 25
 MONTGOMERY TWP.
 R.R. SPK. - SET P.K.
MAIN ST. IN RISING SUN
 #378
 #23 COPIED

"X" - S.E. END PUMP ISLAND S.W. 48.52
 "X" TOP OF CURB E. 14.3E
 S.E. COR. BRICK BLDG. N.W. 66.8i

STA. 330+74.75 ✓
 NEW SURVEY STA. =
 344+16.95
 $\Delta = 0^\circ - 04' LT$
 E 1/4 Post SEC 36
 MONTGOMERY TWP.
 R.R. SPK. - SET P.K.
 #377
 #22 COPIED

SHI. IN POLE W. 37.34
 SHI. IN 10' OAK CLUMP N.W. 50.59'
 R/W MON. W. 37.64'
 SHI. IN T. POLE S.E. 40.90'
 SHI IN FENCE BRACE POST N.E. 66.00

PERSONNEL TITLE PERSONNEL TITLE COUNTY Sandusky DATE _____
 Recorded in Stone Record S. R. #199 WEATHER _____
Jan 19 65 SEC San Cor #1 to S.R #6 TEMP. _____

DESCRIPTION Control Point Ties & R/W JOB NO. _____

LEFT	CENTER LINE	RIGHT
<p>Co Ref #21 → Co Rd 11 East</p> <p>Stone from old References - R.R Spk over top (S.W.E, 1957)</p> <p>Ref. Points W.S.W to N.E. Cor Conc. Blk Garage - 63.53 N.W to S.E Cor Brk. Store Front - 66.82 S.S.W to East Cor Conc. Blk. Garage - 65.83' E to 't' cut in curb - 14.38'</p>	<p>60.50'</p>	<p>R.R Spike over stone - from old References</p> <p>Ref Points - N.W to N.E. Cor Conc. Blk. Bldg. - 65.2 S.W to S.E Cor Brk. Store Front - 77.13'</p> <p>Main st. west Co Ref #22</p>
<p>Co Ref #23 W 1/4 Sec 31</p> <p>R.R Spk over stone by state Hwy</p> <p>Ref Mens. W - 37.2' E E 40.62' N E 73.15'</p>	<p>60.50'</p>	<p>R.R Spk. set at offset of 60.50 on old fence line</p> <p>Ref Mens. E - 39.51' - S.E 82.06 N.W 81.20' S.S.W. 73.80'</p> <p>Co Ref #24 E 1/4 Sec. 36</p>
<p>Co Ref #25</p>	<p>Cyren Rd</p>	<p>Co Rd #1 Brass on with 't' on top over stone - from old references</p> <p>Mens SW - 91.00' - to USGS Disc in MH top - 54.71' SSW to 't' in west end of No Bridge Abut - 61.38 SSE to 't' in east end of " " " - 36.82</p>

PERSONNEL TITLE PERSONNEL TITLE COUNTY Sandusky DATE 1/17/66
 recorded in Stone Record S. R. # 199 WEATHER
 Jan. 1965 SEC. Record # 1 to S.R. # 6 TEMP.

DESCRIPTION Control Point Ties & R/W - Scott Twp JOB NO.
 LEFT CENTER LINE RIGHT

R.R. Spike over stone - stone under 10' Hwy cut - Waco Co. Eng Dept 1956 Ref Mons. N.E. 67.95 SE. 63.17 SW. 26.83' SE to M.H. Lid 33.22'		co. Ref # 5 NW cor sec 7 Co Rd # 45 East Bradner Rd West
R.R. Spk over stone by state Hwy Ref Mons SW. 47.84 E 76.93' NW to S.E. Cor House 83.91'	59.40	sw cor 12 Co Ref # 8 Gusborg Pike west Stone found by WPA 1939 Point checks with Govt Twp Offset 59.40' Jan. 1965 Ref Mons ESE 73.88' - N.E. 87.00' - N.W. 42.92'
R.R. Spk. over stone by state Hwy Ref Mons. E to 't' cut in east end of No. Bridge Abut - 22.93' SSE to 't' cut in east end of So. " " - 34.05' SW to 't' cut in west end of No. " " 43.67' SSW to 't' cut in west end of So. " " - 56.78'		Merrill Rd. west Co Ref # 13
	Co Ref # 14 w 2.19	Point set with Govt Twp offset 116.82' Jan 1965 Ref Mons. N.E. 64.10 - N.W. 59.53
R.R. Spike over stone by state Hwy Ref Mons NW 55.75 - SW. 47.29'		Co Ref. # 15
	Co Ref # 16 → Co. Rd # 21 →	sw cor 19 Point set with Govt Twp offset 99.00' Jan. 1965 Ref. Mons. W to 6" dia steel cor. post - 50.39 'S.W. - 73.93' SE. 110.06'
R.R. Spike over stone by state Hwy Ref Mons E. - 63.90' N.W. 99.15'		Girton Rd West ← Co. Ref # 17
Stone from old References N.W. to S.E. Cor House 53.33' S.W. to N.E. Cor Porch 52.65' N.W. to S.E. Cor House wing 70.05' S.E. to Wising 47.24'	104.35'	High St. Ref # 20

PERSONNEL	TITLE	PERSONNEL	TITLE

COUNTY Wood DATE OK 12-10-57

S. R. #199 WEATHER _____

SEC. _____ TEMP. _____

DESCRIPTION _____ LEFT _____ CENTER LINE _____ RIGHT _____ JOB NO. _____

Sta. 330+74.75			Sh. man	E	29.85
New Survey = 344+16.95			Shiner in 10" oak	N.W.	50.68 51.9
$\Delta = 0^\circ 04' / ft.$	checked	6-9-65	Sh. man	W.	37.60 37.87
E. 1/4 post sec. 36 Montgomery			Conc. fence post	N.W.	31.36
Twp. R.R. spike			Shiner in T.P.	S.E.	41.00
22 #377			Shiner in fence br post.	N.E.	66.00 66.75

Sta. 357+48.85			OK	X-in S.E. end pump island	S.W.	48.50
New Survey = 370+90.32				Cor. porch fdn.	N.W.	65.00
$\Delta = 0^\circ 02' R.$	Main County line	sts (Rising Sun)		N.W. Cor. Adm. church	N.E.	45.42
S.E. cor. sec. 25 Montgomery		6-9-65		N.W. Cor. 2nd step	S.E.	48.69
Shiner over stone ad. RR spk.			OK	X-in top curb	E.	14.38
23 #378			OK	S.E. cor. brick bldg.	N.W.	66.82

Sta. 367+63.20			OK	S.E. cor. house fdn.	N.W.	53.31
New Survey 381+04.62			gone	Spk in 18" maple	N.W.	34.28
$\Delta = 0^\circ 02' R.$	High St. County line	(Rising Sun)	gone	N.E. Cor. walk	S.W.	27.97
E.R. spike over stone			OK	N.E. Cor. Porch ⁵¹⁹⁶	S.W.	52.63
P. Kinail			OK	ESE. to shi. in cable pole		47.25
24A #379						

#380