

O.D.O.T. DISTRICT 2 SURVEY OFFICE (USE ONLY)

PERSONNEL

REFERENCE NO. 24

SHEET 30 OF 46

NOTES RHOADES

DATE 4/20/22

ROUTE US 23

H.C. O'DONNELL

WEATHER SUNNY

COUNTY WOOD

R.C. KETNER  
AUBLE

TEMP. 38°

TOWNSHIP MONTGOMERY

DWG BY RHOADES PID 102922

SECTION 25

T 4 N R 12 E

TYPE MONUMENT P.K.SHANK

~~ON SURFACE~~ - BELOW ON

OFFSET ☑ PAVEMENT ON LT : RT

- TO - EDGE PAVEMENT

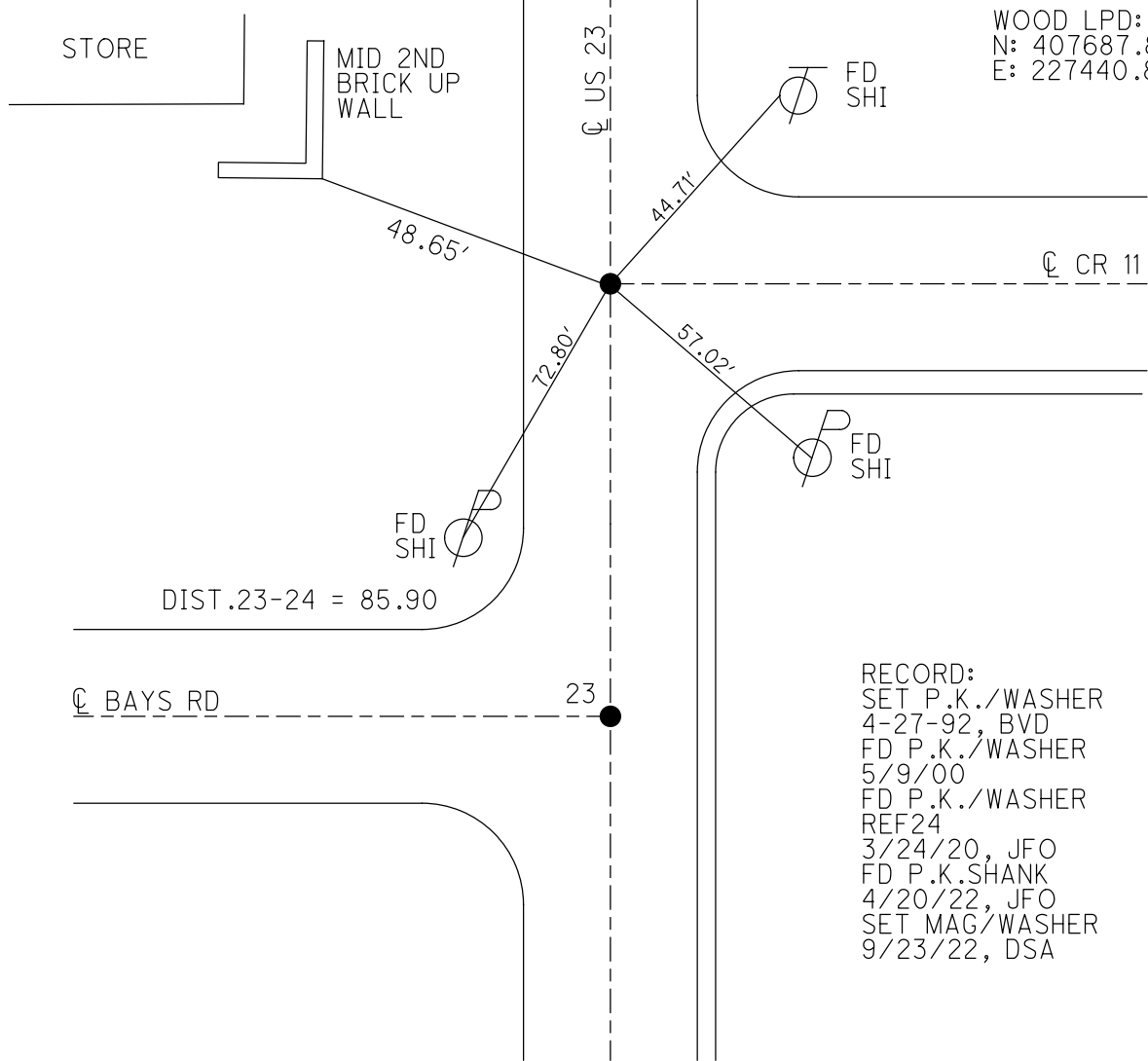
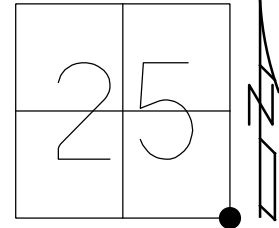
STATION: 371+75.99

HORZ.DATUM: NAD83(2011)

GEOID: 18

GRID: NORTHING: 585009.455

EASTING: 1715770.454



WOOD LPD:  
N: 407687.831  
E: 227440.893

RECORD:  
SET P.K./WASHER  
4-27-92, BVD  
FD P.K./WASHER  
5/9/00  
FD P.K./WASHER  
REF24  
3/24/20, JFO  
FD P.K.SHANK  
4/20/22, JFO  
SET MAG/WASHER  
9/23/22, DSA

O.D.O.T. DISTRICT 2 SURVEY OFFICE (USE ONLY)

PERSONNEL

REFERENCE NO. 24

SHEET 30 OF 46

NOTES RHOADES

DATE 4/20/22

ROUTE US 23

H.C. O'DONNELL

WEATHER SUNNY

COUNTY WOOD

R.C. KETNER

TEMP. 38°

TOWNSHIP MONTGOMERY

AUBLE

DWG BY RHOADES

PID 102922

SECTION 25

T 4 N R 12 E

TYPE MONUMENT P.K.SHANK

~~ON SURFACE~~ - BELOW ON

OFFSET  $\phi$  PAVEMENT ON LT : RT

- TO - EDGE PAVEMENT

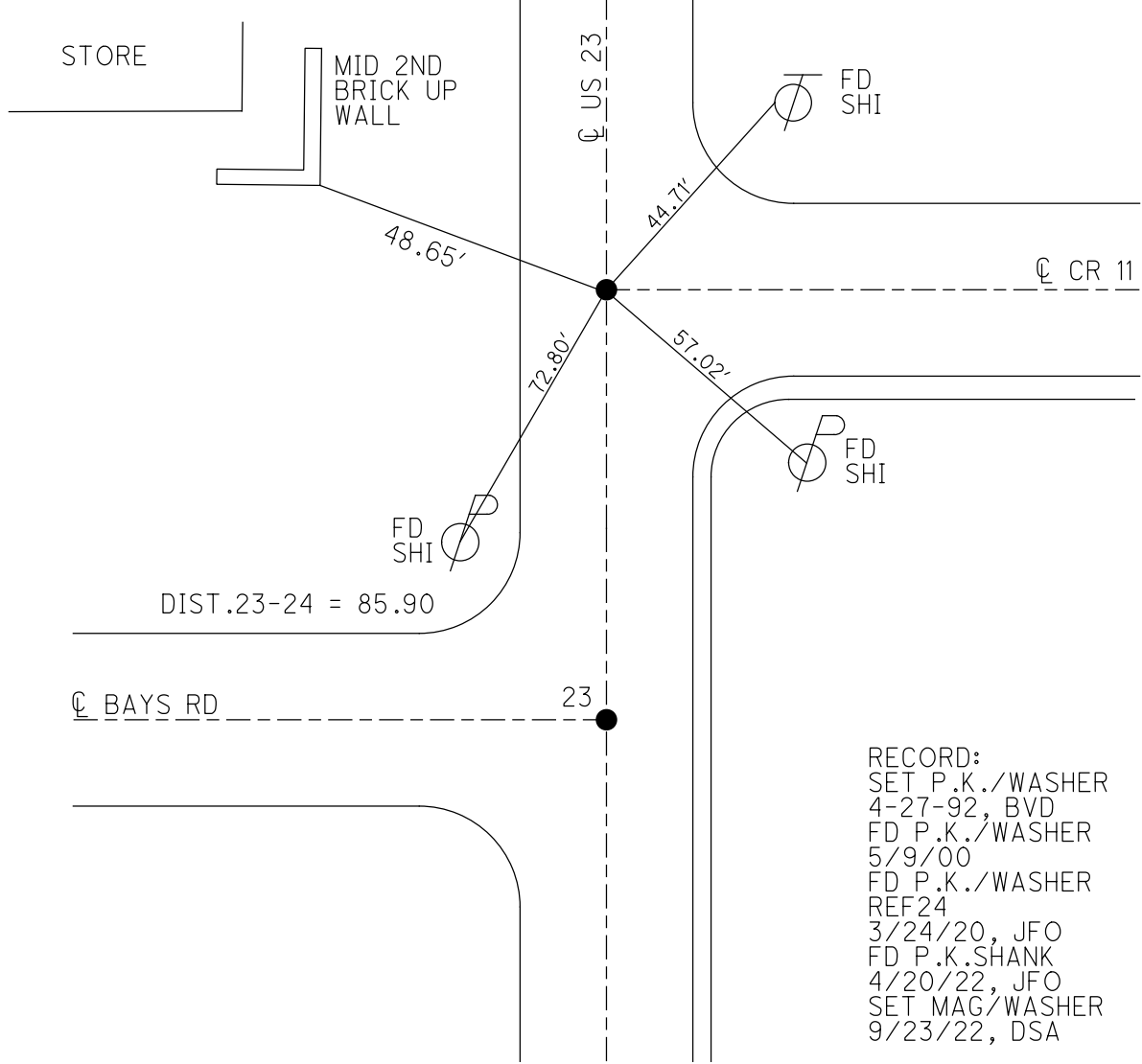
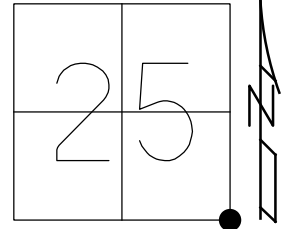
STATION: 371+75.99

HORZ.DATUM: NAD83(2011)

GEOID: NAVD88 2018

GRID: NORTHING: 585009.455

EASTING: 1715770.454

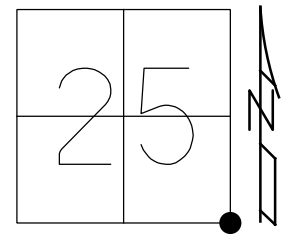


RECORD:  
 SET P.K./WASHER  
 4-27-92, BVD  
 FD P.K./WASHER  
 5/9/00  
 FD P.K./WASHER  
 REF24  
 3/24/20, JFO  
 FD P.K.SHANK  
 4/20/22, JFO  
 SET MAG/WASHER  
 9/23/22, DSA

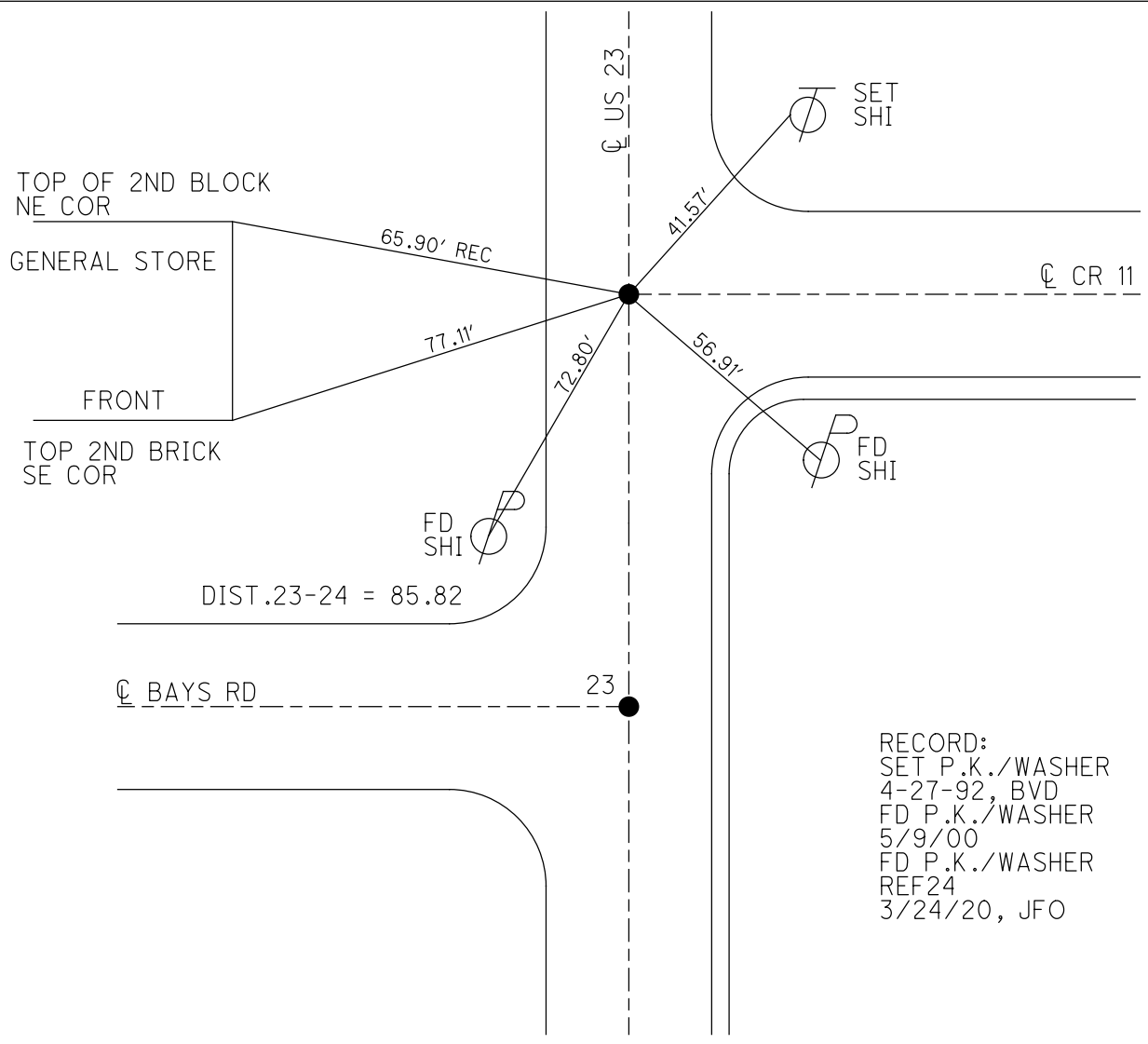
O.D.O.T. DISTRICT 2 SURVEY OFFICE (USE ONLY)

PERSONNEL \_\_\_\_\_ REFERENCE NO. 24 SHEET 24 OF 37  
 NOTES BARNHESEL DATE 8/12/91 ROUTE US 23  
 H.C. VAN DUSEN WEATHER SUNNY COUNTY WOOD  
 R.C. \_\_\_\_\_ TEMP. 83° TOWNSHIP MONTGOMERY  
 DWG BY AUBLE PID 102922 SECTION 25  
 T 4 N R 12 E

TYPE MONUMENT P.K./WASHER  
~~ON SURFACE~~ - BELOW ON  
 OFFSET  $\varnothing$  PAVEMENT ON LT : RT  
- TO - EDGE PAVEMENT  
 STATION: 371+15



HORZ.DATUM: NAD83(2011) GEOID: NAVD88 2018  
 GRID: NORTHING: 585009.455 EASTING: 1715770.454



RECORD:  
 SET P.K./WASHER  
 4-27-92, BVD  
 FD P.K./WASHER  
 5/9/00  
 FD P.K./WASHER  
 REF24  
 3/24/20, JFO

# O.D.O.T. DISTRICT 2 SURVEY OFFICE

PERSONNEL \_\_\_\_\_

REFERENCE NO. 23 & 24 SHEET 13 OF 23

NOTES BARNHISEL

H.C. VAN DUSEN

R.C. \_\_\_\_\_

DATE 8-12-91

WEATHER SUNNY

TEMP. +83°

ROUTE U.S. 23

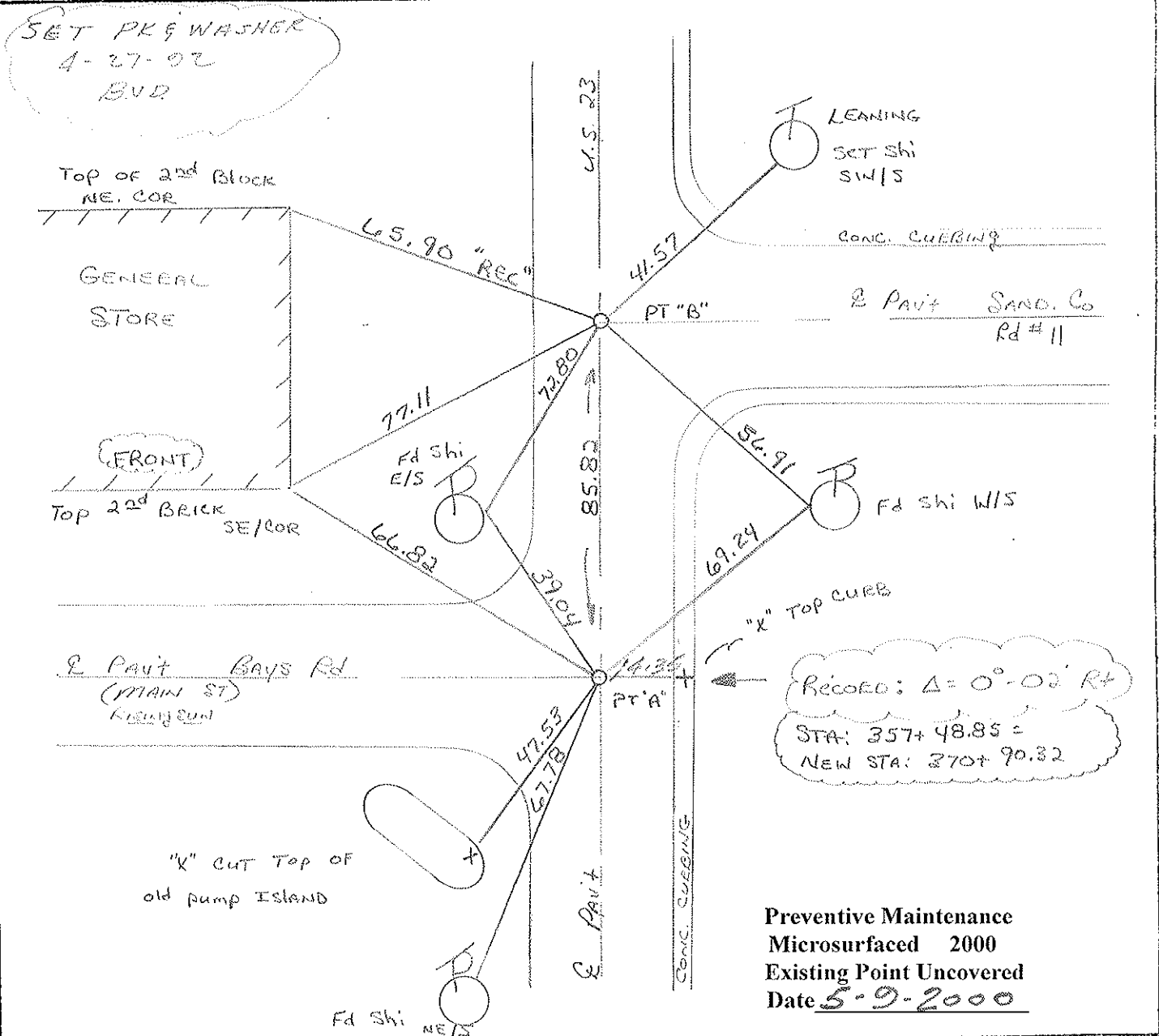
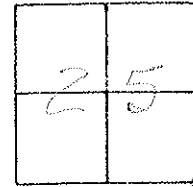
COUNTY Wood

TOWNSHIP Montgomery

SECTION 25

T 4 R 12 E

TYPE MONUMENT P.K.'s & WASHERS  
 ON SURFACE - BELOW yes "BOTH"  
 LEFT - & PAV'T. - RIGHT yes "BOTH"  
 - TO - EDGE PAVEMENT  
 S.L.M. 371+15 PT "A"



County Wood S.R.U.S. 23

Date 7-29-81

Township Montgomery

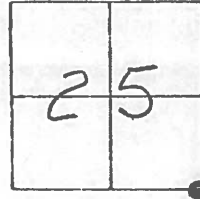
Weather Partly Cloudy

Section 25 - Rising Sun

Temp. +70°

T4N, R12E

Personnel HoFFman



23-24

Loehrke

Householder

1. "A" Fd. P.K. @ surface @  $\perp$  PAVT U.S. 23  $\pm$  12.0' to E.E.P. S.L.M. =

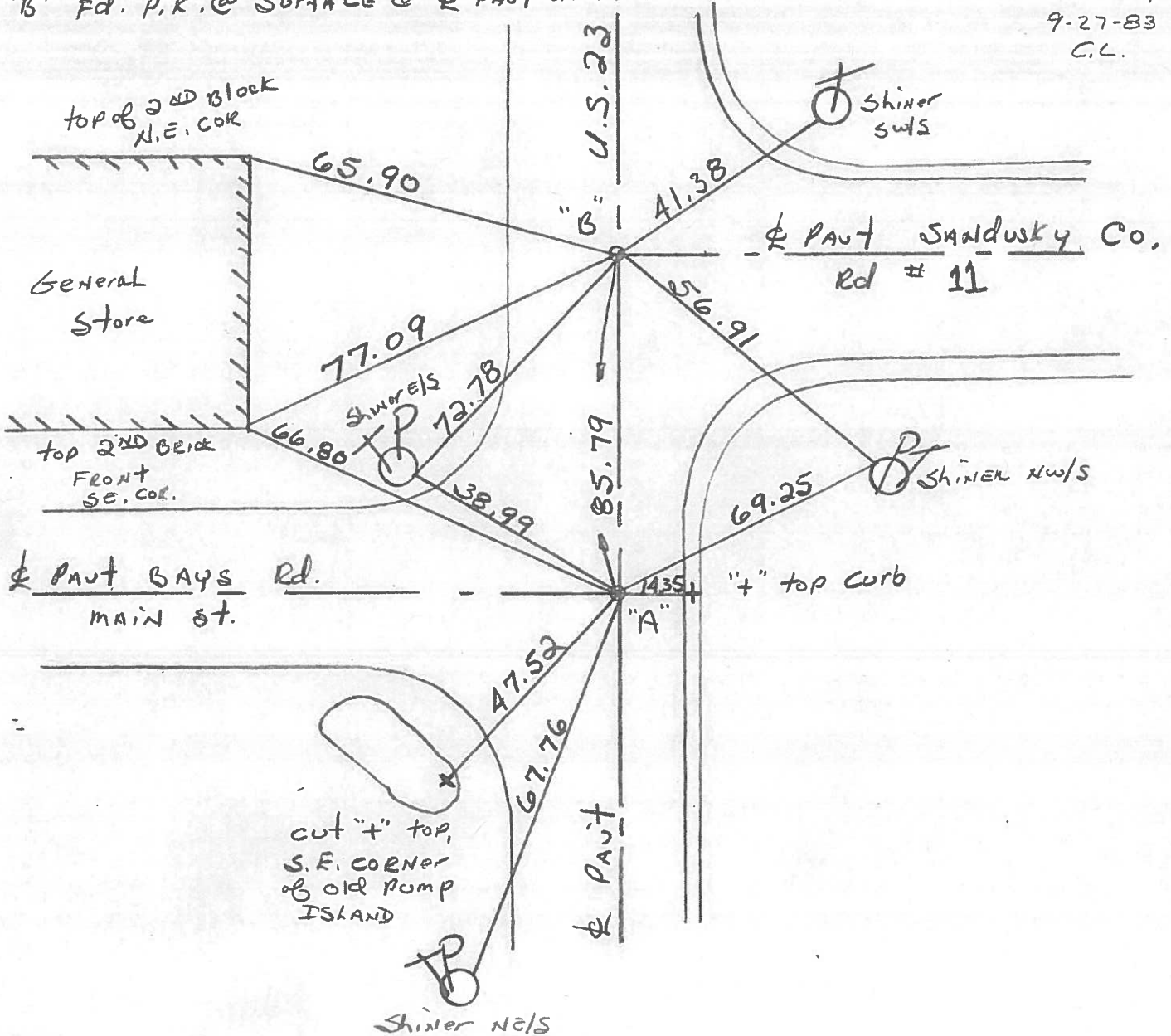
371+81

SET P.K./WASIT

9-27-83

C.L.

2. "B" Fd. P.K. @ surface @  $\perp$  PAVT U.S. 23



04. "A" =

S.T.A. 357+48.85 = New Survey Sta. 370+90.32 -  $\Delta$  = 0°-02' Rt. Rec.

O.D.O.T. DISTRICT 2 SURVEY OFFICE

SHEET

OF

County WOOD <sup>U.S.</sup> ~~S.R.~~ 23

Date 7-17-70

Township MONTGOMERY

Weather \_\_\_\_\_

Section 25

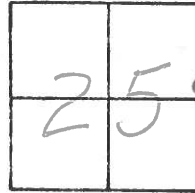
Temp. \_\_\_\_\_

T4N, R12E

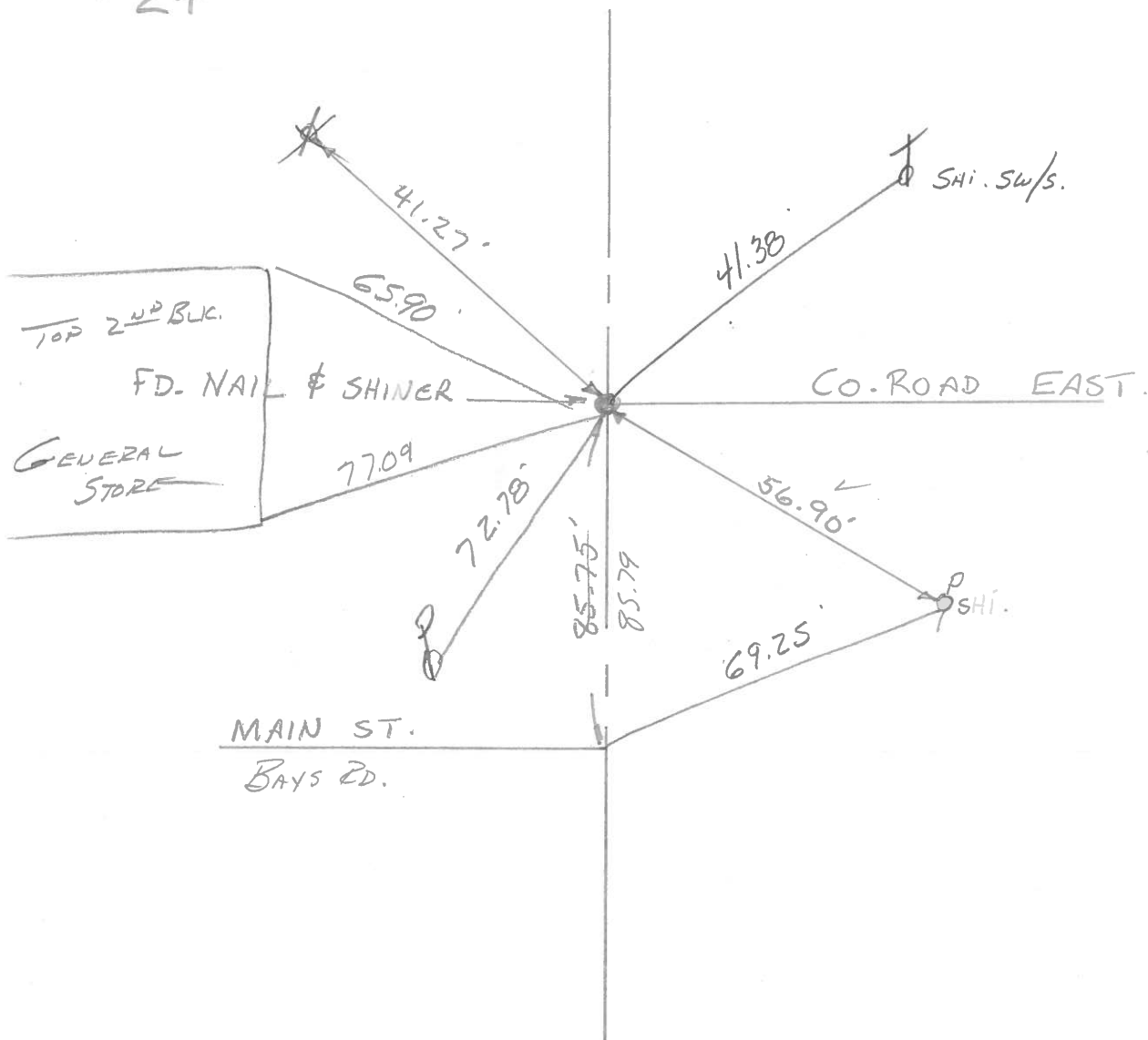
Personnel SILVESTER

BURNSIDE

HOFFMAN



# 24



COPIED

PERSONNEL TITLE PERSONNEL TITLE

CK. BY

COUNTY WOOD

DATE OK-7-17-70

SILVESTER

S. R. U.S. #23

WEATHER

BURNSIDE

SEC.

TEMP.

HOFFMAN

DESCRIPTION

CONTROL TIES

JOB NO.

LEFT

CENTER LINE

RIGHT

FOUND NAIL SHINER ✓  
85.78' N. OF S.E. COR.  
SEC. 25 MONTGOMERY  
TWP.

SHINER BRACE POLE N.E. 41.27  
SHINER P. POLE S.E. 56.90

Co. ROAD EAST #24 COPIED  
#378-A

STA. 357+48.85 ✓  
NEW SURVEY STA. =  
370+90.32  
Δ = 0°-02' RT.  
S.E. COR. SEC. 25  
MONTGOMERY TWP.  
R.R. SPK - SET P.K.  
MAIN ST. IN RISING SUN  
#378

"X" - S.E. END PUMP ISLAND S.W. 48.52  
"X" TOP OF CURB E. 14.3E  
S.E. COR. BRICK BLDG. N.W. 66.8i

#23 COPIED

STA. 330+74.75 ✓  
NEW SURVEY STA. =  
344+16.95  
Δ = 0°-04' LT  
E 1/4 Post SEC 36  
MONTGOMERY TWP.  
R.R. SPK - SET P.K.

SHI. IN POLE W. 37.34  
SHI. IN 10' OAK CLUMP N.W. 50.59'  
R/W MON. W. 37.64'  
SHI. IN T. POLE S.E. 40.90'  
SHI IN FENCE BRACE Post N.E. 66.00

#377  
#22 COPIED



PERSONNEL TITLE PERSONNEL TITLE COUNTY Sandusky DATE 1/17/66  
 recorded in Stone Record S. R. # 199 WEATHER  
 Jan. 1965 SEC. Record # 1 to S.R. # 6 TEMP.

DESCRIPTION Control Point Ties & R/W - Scott Twp JOB NO.  
 LEFT CENTER LINE RIGHT

R.R. Spike over stone - stone under 10' Hwy cut - Waco Co. Eng Dept 1956 Ref Mons. N.E. 67.95 SE. 63.17 SW. 26.83' SE to M.H. Lid 33.22'		co. Ref # 5 NW cor sec 7 Co Rd # 45 East Bradner Rd West
R.R. Spk over stone by state Hwy Ref Mons SW. 47.84 E 76.93' NW to S.E. Cor House 83.91'	59.40	sw cor 12 Co Ref # 8 Gusborg Pike West Stone found by WPA 1939 Point checks with Govt Twp Offset 59.40' Jan. 1965 Ref Mons ESE 73.88' - N.E. 87.00' - N.W. 42.92'
R.R. Spk. over stone by state Hwy Ref Mons. E to 't' cut in east end of No. Bridge Abut - 22.93' SSE to 't' cut in east end of So. " " - 34.05' SW to 't' cut in west end of No. " " 43.67' SSW to 't' cut in west end of So. " " - 56.78'		Merrill Rd. West Co Ref # 13
	Co Ref # 14 w 2.19 →	Point set with Govt Twp offset 116.82' Jan 1965 Ref Mons. N.E. 64.10 - N.W. 59.53
R.R. Spike over stone by state Hwy Ref Mons NW 55.75 - SW. 47.29'		← Co Ref. # 15
	Co Ref # 16 → Co. Rd # 21 →	sw cor 19 Point set with Govt Twp offset 99.00' Jan. 1965 Ref. Mons. W to 6" dia steel cor. post - 50.39 'S.W. - 73.93' SE. 110.06'
R.R. Spike over stone by state Hwy Ref Mons E. - 63.90' N.W. 99.15'		Girton Rd West ← Co. Ref # 17
Stone from old References N.W. to S.E. Cor House 53.33' S.W. to N.E. Cor Porch 52.65' N.W. to S.E. Cor House wing 70.05' S.E. to Wising 47.24'	104.35'	High St. Ref # 20