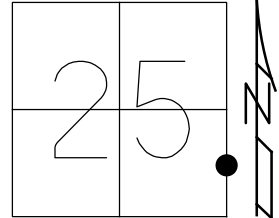


O.D.O.T. DISTRICT 2 SURVEY OFFICE (USE ONLY)

PERSONNEL _____ REFERENCE NO. 24 A SHEET 31 OF 46
 NOTES RHOADES DATE 4/20/22 ROUTE US 23
 H.C. O'DONNELL WEATHER SUNNY COUNTY WOOD
 R.C. KETNER TEMP. 38° TOWNSHIP MONTGOMERY
AUBLE SECTION 25
 DWG BY RHOADES PID 102922 T 4 N R 12 E

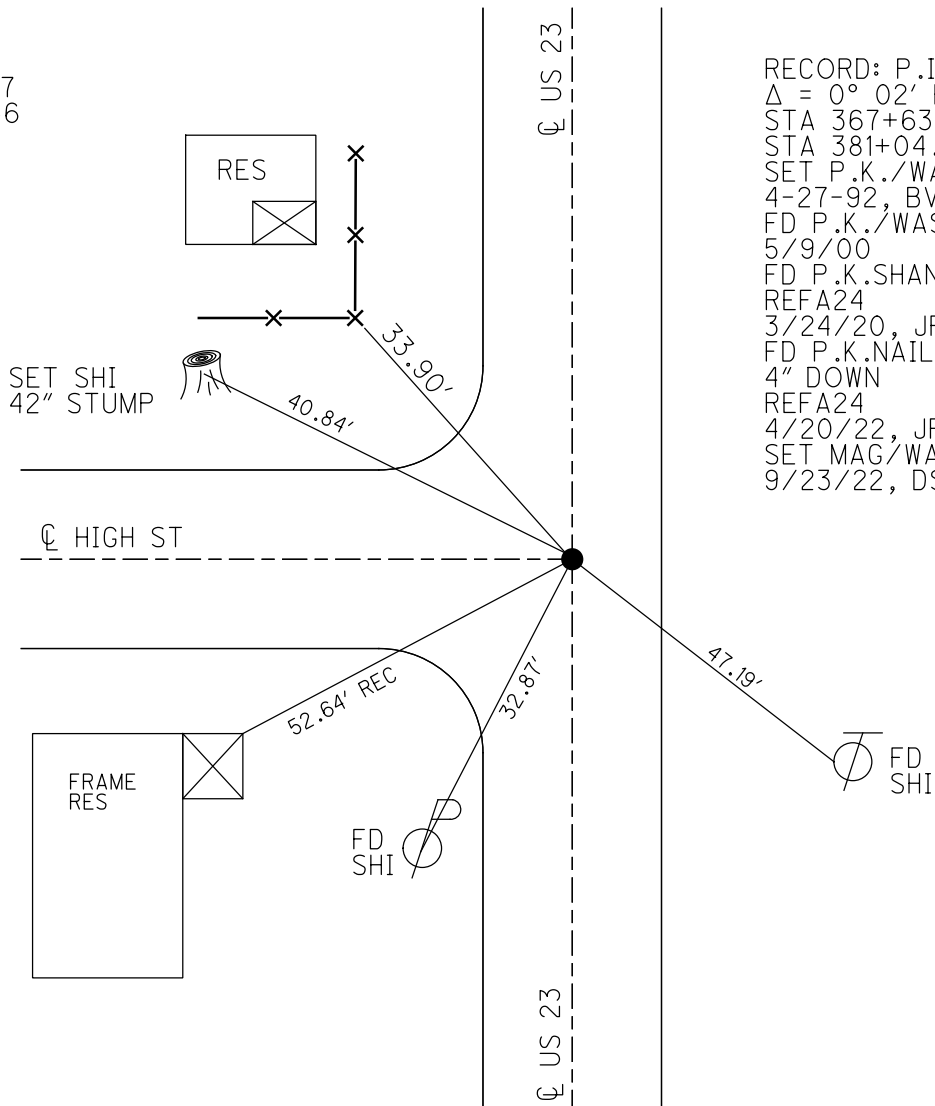
TYPE MONUMENT P.K.NAIL
~~ON SURFACE~~ - BELOW 4"
 OFFSET CL PAVEMENT ON LT : RT
12.5' TO RT EDGE PAVEMENT
 STATION: 381+04.36



HORZ.DATUM: NAD83(2011) GEOID: NAVD88 2018
 GRID: NORTHING: 585937.314 EASTING: 1715802.953

WOOD LPD:
 N: 408616.117
 E: 227461.146

RECORD: P.I.
 $\Delta = 0^\circ 02' RT$
 STA 367+63.20
 STA 381+04.28
 SET P.K./WASHER
 4-27-92, BVD
 FD P.K./WASHER
 5/9/00
 FD P.K.SHANK
 REFA24
 3/24/20, JFO
 FD P.K.NAIL
 4" DOWN
 REFA24
 4/20/22, JFO
 SET MAG/WASHER
 9/23/22, DSA



O.D.O.T. DISTRICT 2 SURVEY OFFICE (USE ONLY)

PERSONNEL

REFERENCE NO. 24 A

SHEET 31 OF 46

NOTES RHOADES DATE 4/20/22
 H.C. O'DONNELL WEATHER SUNNY
 R.C. KETNER TEMP. 38°
AUBLE

ROUTE US 23
 COUNTY WOOD
 TOWNSHIP MONTGOMERY
 SECTION 25
 T 4 N R 12 E

DWG BY RHOADES PID 102922

TYPE MONUMENT P.K.NAIL

~~ON SURFACE~~ - BELOW 4"

OFFSET C PAVEMENT ON LT : RT

12.5' TO RT EDGE PAVEMENT

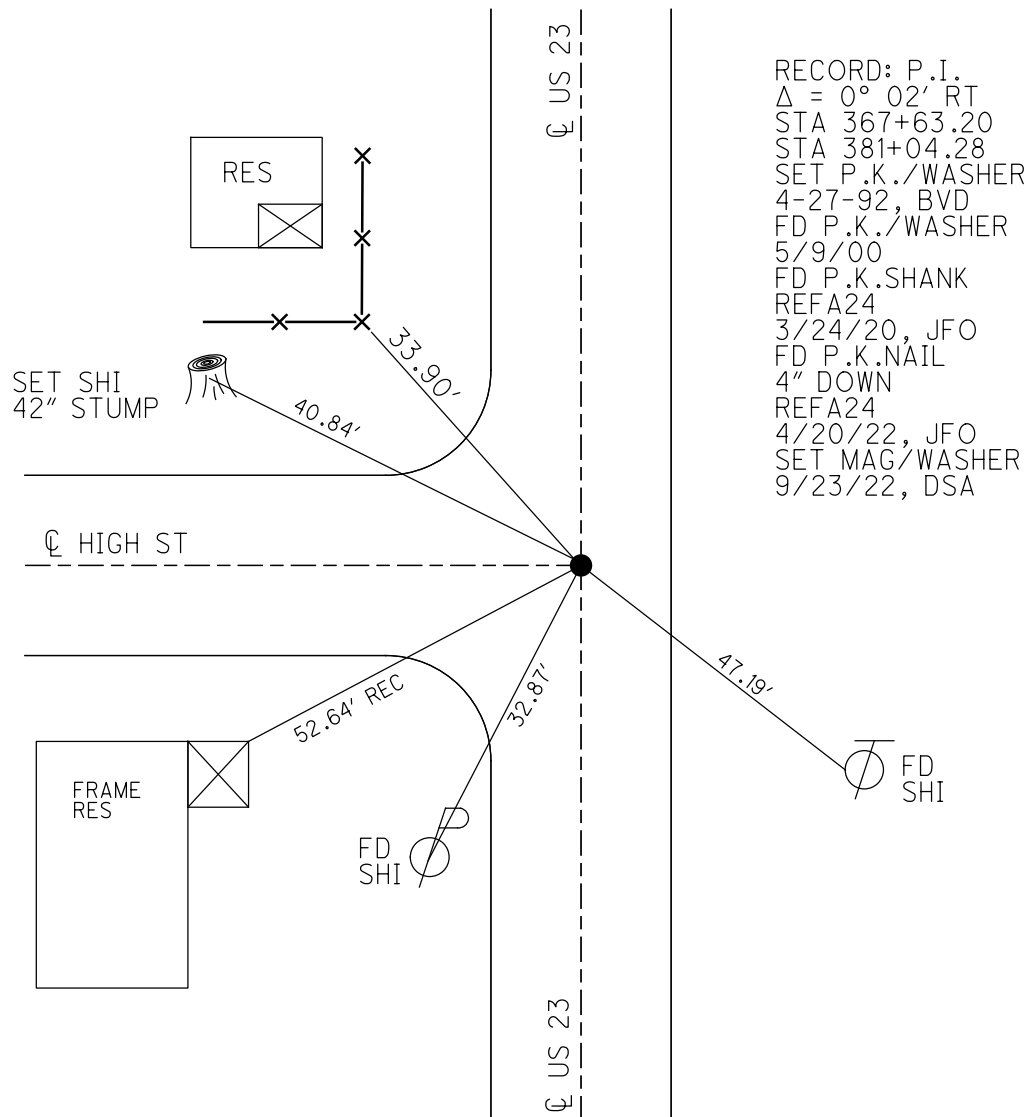
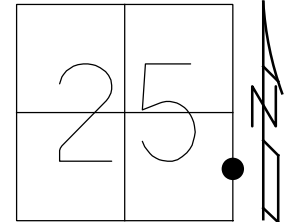
STATION: 381+04.36

HORZ.DATUM: NAD83(2011)

GEOID: NAVD88 2018

GRID: NORTHING: 585937.314

EASTING: 1715802.953



RECORD: P.I.
 $\Delta = 0^\circ 02' \text{ RT}$
 STA 367+63.20
 STA 381+04.28
 SET P.K./WASHER
 4-27-92, BVD
 FD P.K./WASHER
 5/9/00
 FD P.K.SHANK
 REFA24
 3/24/20, JFO
 FD P.K.NAIL
 4" DOWN
 REFA24
 4/20/22, JFO
 SET MAG/WASHER
 9/23/22, DSA

O.D.O.T. DISTRICT 2 SURVEY OFFICE (USE ONLY)

PERSONNEL

REFERENCE NO. 24 A

SHEET 25 OF 37

NOTES BARNHEISEL

DATE 8-12-92

ROUTE US 23

H.C. VAN DUSEN

WEATHER SUNNY

COUNTY WOOD

R.C. _____

TEMP. 83°

TOWNSHIP MONTGOMERY

DWG BY AUBLE

PID 102922

SECTION 25

T 4 N R 12 E

TYPE MONUMENT P.K./WASHER

ON SURFACE - ~~BELOW~~ ON

OFFSET 12.5' TO RT PAVEMENT ON LT : RT

12.5' TO RT EDGE PAVEMENT

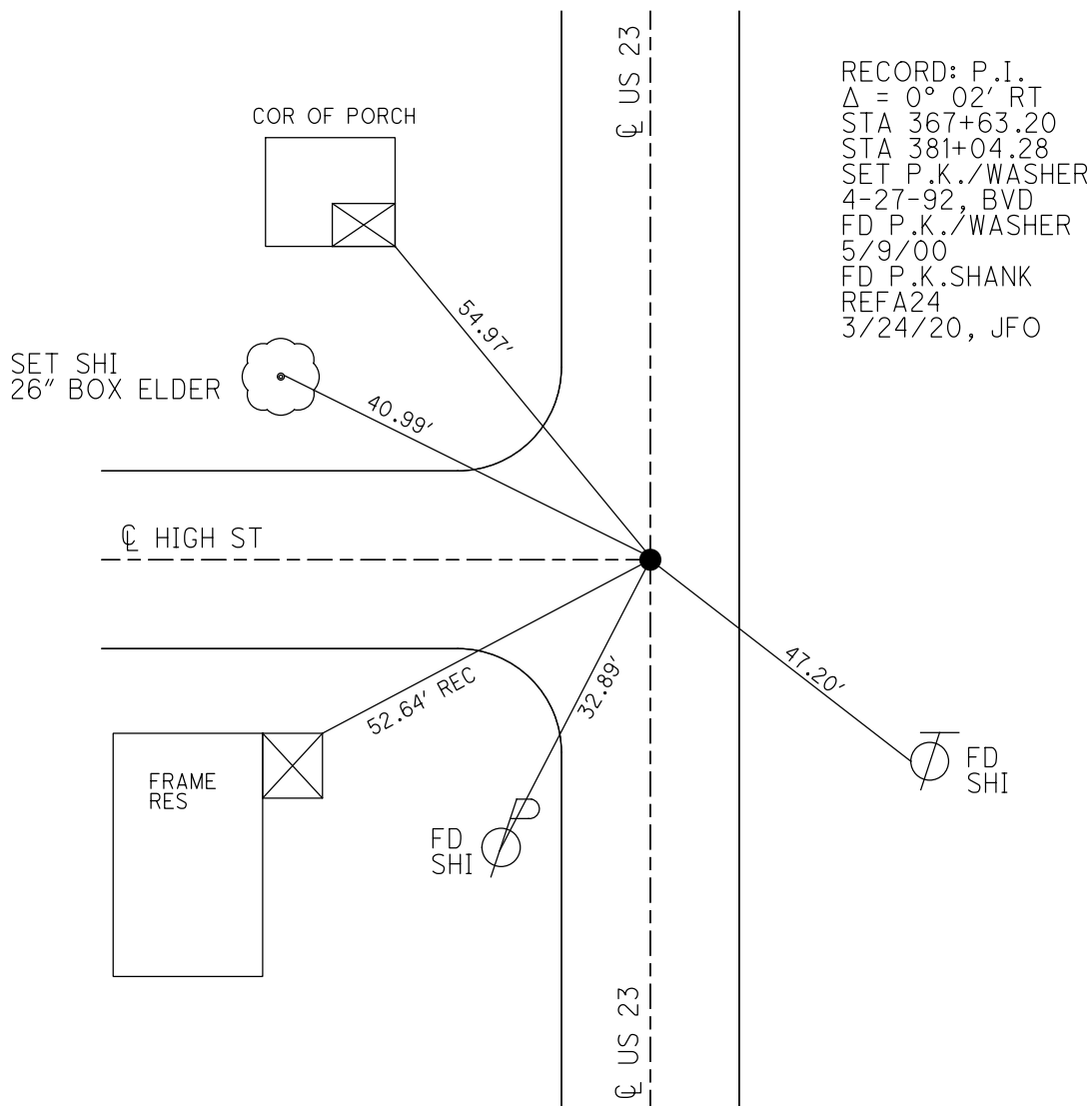
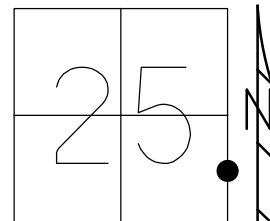
STATION: 381+28

HORZ.DATUM: NAD83(2011)

GEOID: NAVD88 2018

GRID: NORTHING: 585937.314

EASTING: 1715802.953



RECORD: P.I.
 $\Delta = 0^\circ 02' RT$
 STA 367+63.20
 STA 381+04.28
 SET P.K./WASHER
 4-27-92, BVD
 FD P.K./WASHER
 5/9/00
 FD P.K.SHANK
 REFA24
 3/24/20, JFO

O.D.O.T. DISTRICT 2 SURVEY OFFICE

PERSONNEL _____

REFERENCE NO. 24-A

SHEET 14 OF 23

NOTES BARNHISEL

H.C. VAN DUSEN

R.C. _____

DATE 8-12-91

WEATHER SUNNY

TEMP. +83°

ROUTE U.S. 23

COUNTY WOOD

TOWNSHIP montgomery

SECTION 25

T 4 N R 12 E

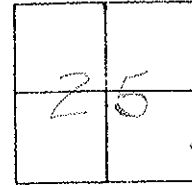
TYPE MONUMENT P.K. & WASHER

ON SURFACE - BELOW YES

LEFT - & PAV'T. - RIGHT YES

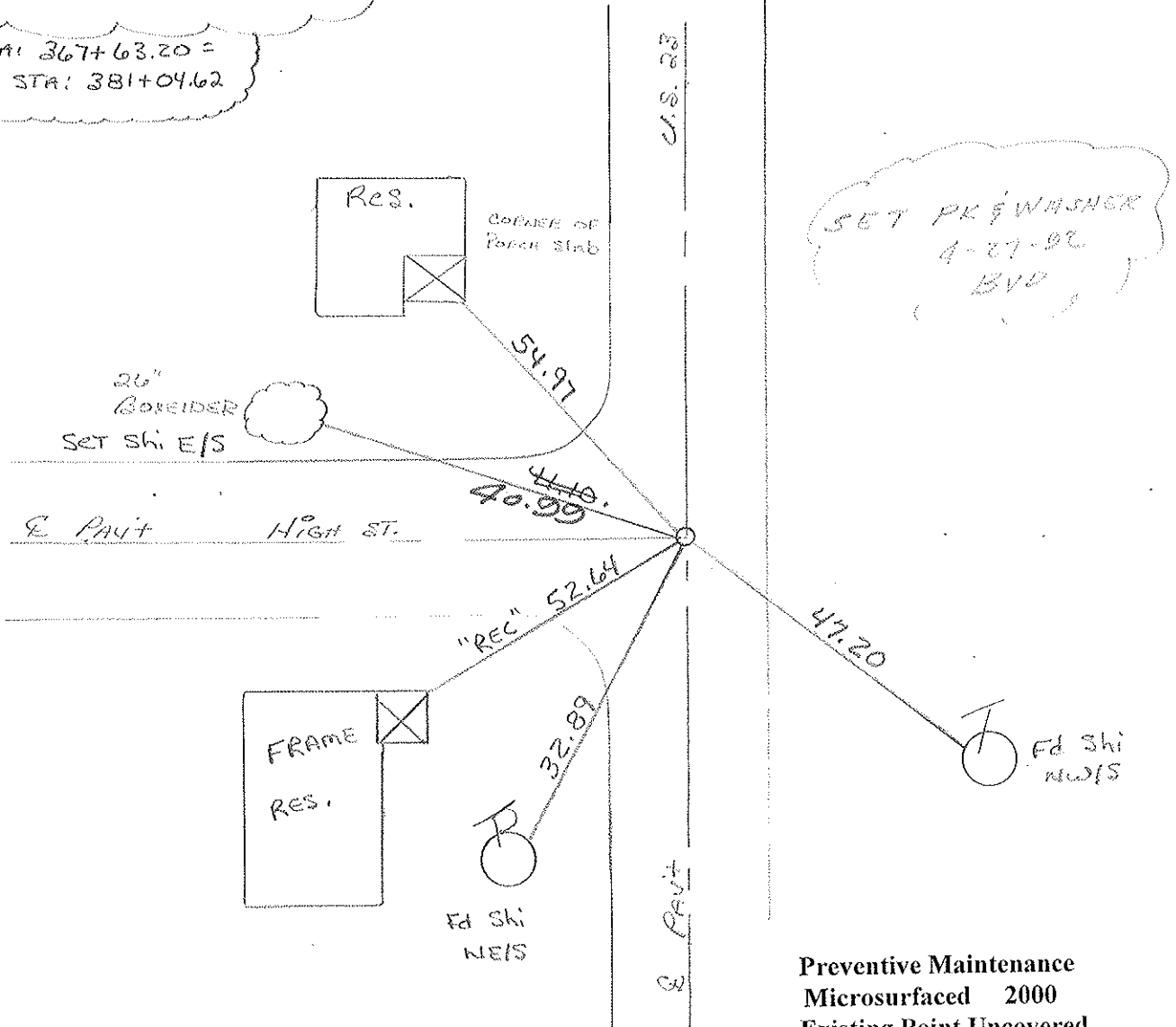
12.5 TO RT EDGE PAVEMENT

S.L.M. 381+28



Recoed : $\Delta = 0^\circ - 02' RT$

STAI 367+63.20 =
NEW STA: 381+04.62



SET PK & WASHER
4-27-92
BVD

Preventive Maintenance
Microsurfaced 2000
Existing Point Uncovered
Date 5-9-2000

County Wood S.R. U.S. 23

Date 7-29-81

Township Montgomery

Weather Partly Cloudy

Section 25 - Rising Sun

Temp. +72°

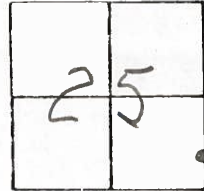
T4N, R12E

Personnel Hoffman

Loehrke

Householder

24-A



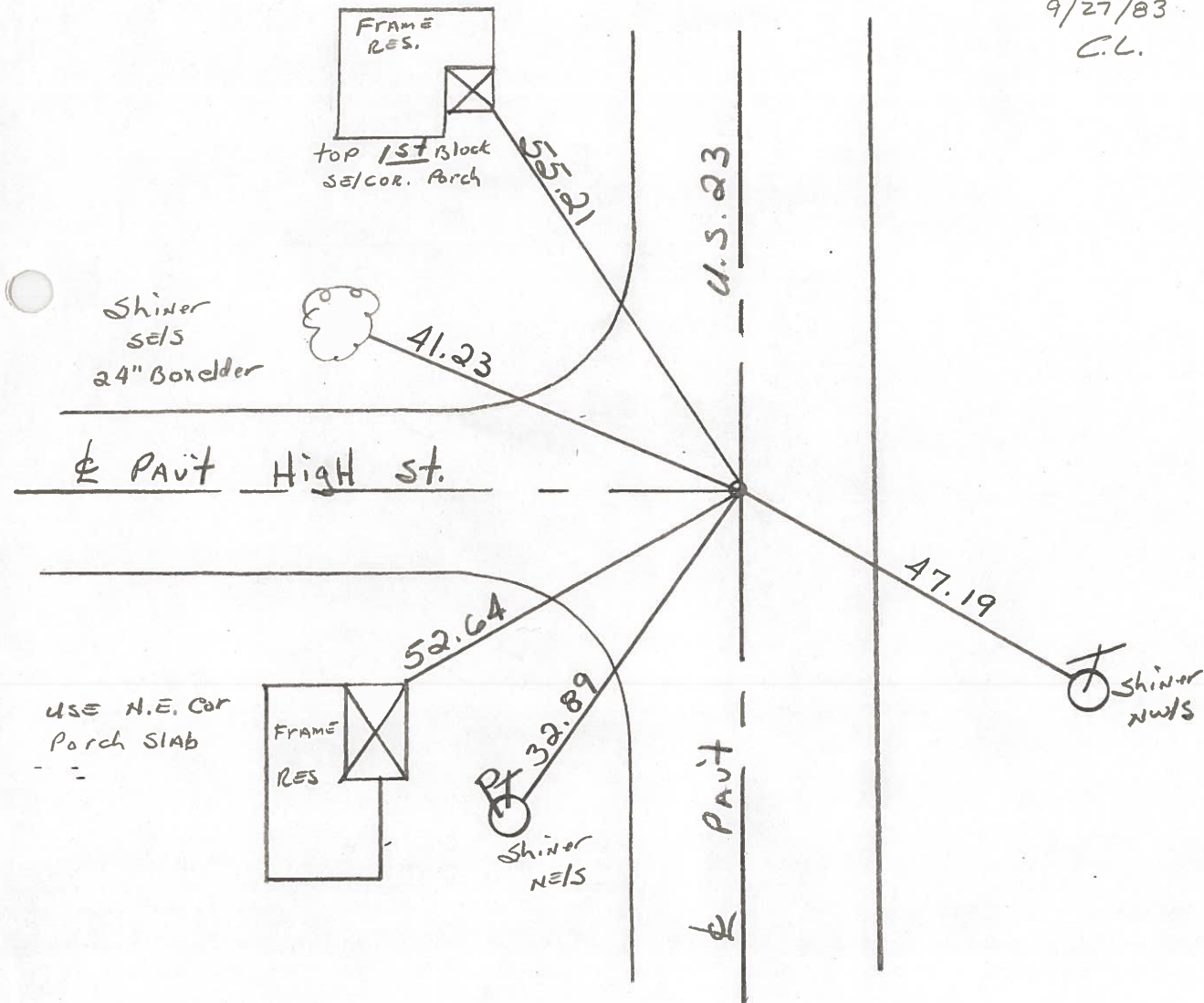
Fd. P.K. @ surface @ ctr. pavt U.S. 23
12.2 to E.E.P.

S.L.M. = 381+98

SET P.K./WASHER

9/27/83

C.L.



Sta. 367+63.20 = New Survey Sta. 381+04.62 - Δ = 0°-02' Rt ~ Rec.

PERSONNEL TITLE PERSONNEL TITLE
 CK. BY
 SILVESTER
 BURNSIDE
 SMITH

COUNTY WOOD DATE OK-7-17-70
 S. R. U.S. #23 WEATHER
 SEC. TEMP.

CONTROL TIES

DESCRIPTION LEFT CENTER LINE RIGHT JOB NO.

FOUND P.K. NAIL 98.96' NORTH OF S.E. COR. SEC. 24 MONTGOMERY TWP. #381-A #27	✓	"X" S. END CONC. PIPE S.E. 53.59 ^(P) 8" CASING POST W. 50.33' SHINER 24" MAPLE N.E. 83.00'
STA. 410+53.05 NEW SURVEY STA. = 423+93.93 Δ = 0°-17' LT. S.E. COR. SEC. 24 MONTGOMERY TWP R.R. Spk. OVER STONE SET. P.K. GIRTON ROAD. #381 #26	✓	8" CASING FENCE POST W.N.W. 102.34 N.E. COR. CONC. WALK S.W. 67.55' SHINER P. POLE E. 63.80' "X" S. END CONC. PIPE N.E. 75.70 ^(P)
DID NOT FIND #380 #25		
STA. 367+63.20 ✓ NEW SURVEY STA. = 381+0462 Δ = 0°-02' RT. R.R. Spk. OVER STONE SET P.K. HIGH STREET - RISING SUN #379 #24-A	✓	S.E. COR. HOUSE FDN. N.W. 53.31' N.E. COR. PORCH SLAB S.W. 52.63' SHINER IN CABLE POLE E.S.E. 47.25' SHINER 18" BOX ELDER N.W. 41.75'

PERSONNEL _____ TITLE _____ PERSONNEL _____ TITLE _____
 COUNTY Wood DATE OK 12-10-57
 S. R. #199 WEATHER _____
 SEC. _____ TEMP. _____

DESCRIPTION	LEFT	CENTER LINE	RIGHT	JOB NO.
Sta. 330+74.75 New Survey = 344+16.95 $\Delta = 0^{\circ} 04' / ft.$ checked 6-9-65 E. 1/4 post sec. 36 Montgomery Twp. R.P. spike 22 #377			Flu man E 29.85 Shiner in 10" oak N.W. 50.68 51.0 Flu man W. 37.60 37.87 Cor. fence post N.W. 31.36 Shiner in T.P. S.E. 41.00 Shiner in fence br post. N.E. 66.00 66.75	
Sta. 357+48.85 New Survey = 370+90.32 $\Delta = 0^{\circ} 02' / ft.$ Main & County line sts (Rising Sun) S.E. cor. sec. 25 Montgomery 6-9-65 Shiner over stone fd. RR SPK. 23 #378		OK	X-in S.E. end pump island S.W. 48.50 Cor. porch fdn. N.W. 65.00 N.W. cor. Adm. Church N.E. 45.42 N.W. cor. 2nd step S.E. 48.67 X-in top curb E. 14.38 S.E. cor. brick bldg. N.W. 66.82	
Sta. 367+63.20 New Survey 381+04.62 $\Delta = 0^{\circ} 02' / ft.$ High St. & County line (Rising Sun) E.P. spike over stone P. Kinail 24A #379		OK gone gone OK OK	S.E. cor. house fdn. N.W. 53.31 Spk in 18" maple N.W. 34.28 N.E. Cor. walk S.W. 27.97 N.E. Cor. Porch ^{5/96} S.W. 52.63 ESE. to shi. in cable pole 47.25	
#380				