

O.D.O.T. DISTRICT 2 SURVEY OFFICE (USE ONLY)

PERSONNEL

REFERENCE NO. 26

SHEET 32 OF 46

NOTES RHOADES

DATE 4/20/21

ROUTE US 23

H.C. O'DONNELL

WEATHER SUNNY

COUNTY WOOD

R.C. KETNER

TEMP. 38°

TOWNSHIP MONTGOMERY

AUBLE

SECTION 24

DWG BY RHOADES PID 102922

T 4 N R 12 E

TYPE MONUMENT R.R.SPIKE

~~ON SURFACE~~ - BELOW 6"

OFFSET \odot PAVEMENT ON LT : RT

11.7 TO RT EDGE PAVEMENT

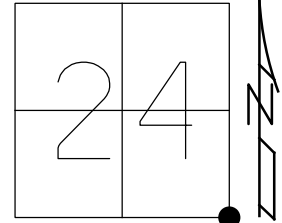
STATION: 423+93.26

HORZ.DATUM: NAD83(2011)

GEOID: NAVD88 2018

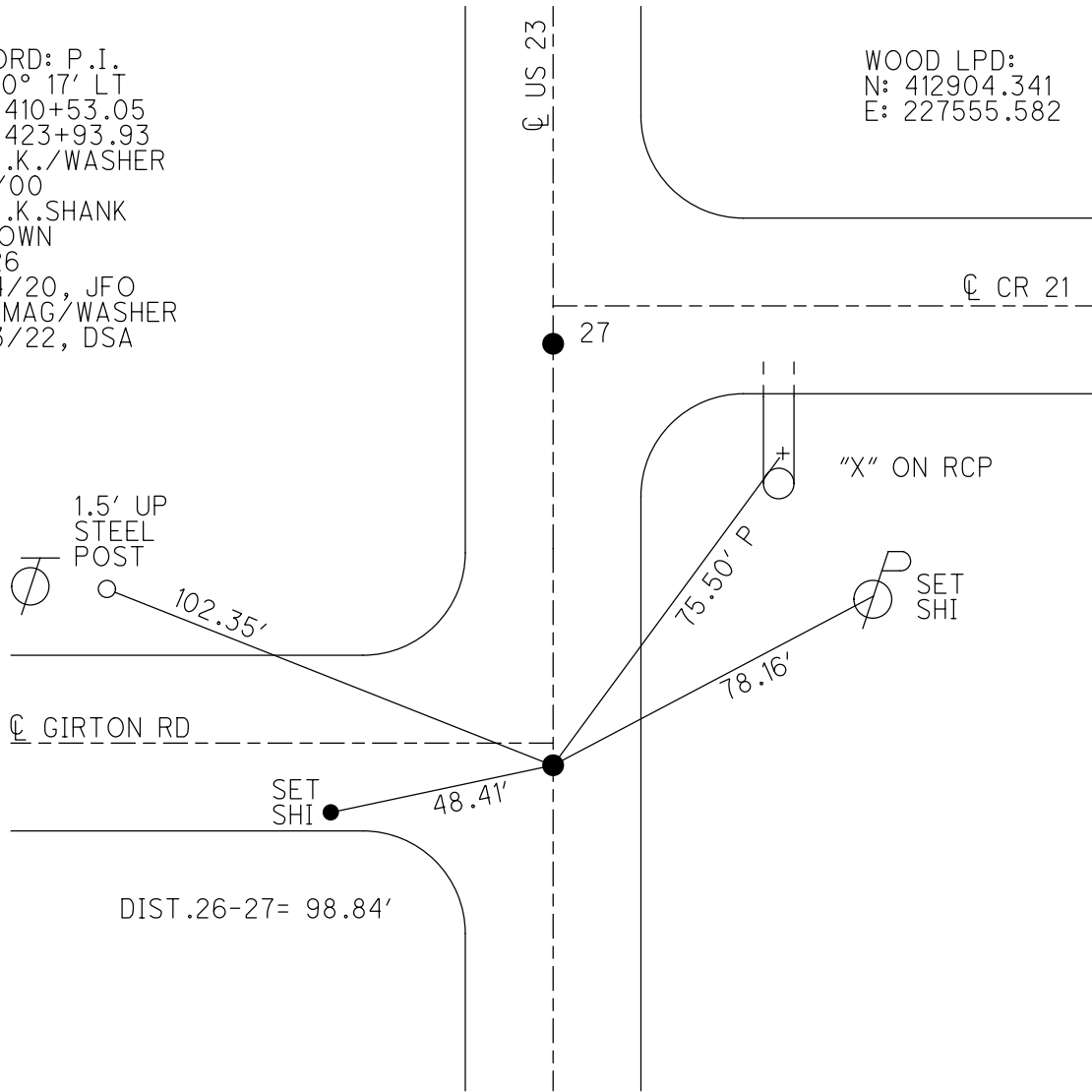
GRID: NORTHING: 590223.560

EASTING: 1715953.957



RECORD: P.I.
 $\Delta = 0^\circ 17' \text{ LT}$
 STA 410+53.05
 STA 423+93.93
 FD P.K./WASHER
 5/9/00
 FD P.K.SHANK
 4" DOWN
 REF26
 3/24/20, JFO
 SET MAG/WASHER
 9/23/22, DSA

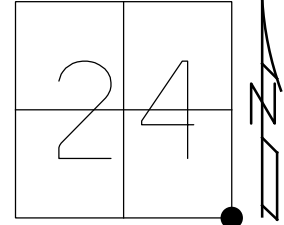
WOOD LPD:
 N: 412904.341
 E: 227555.582



O.D.O.T. DISTRICT 2 SURVEY OFFICE (USE ONLY)

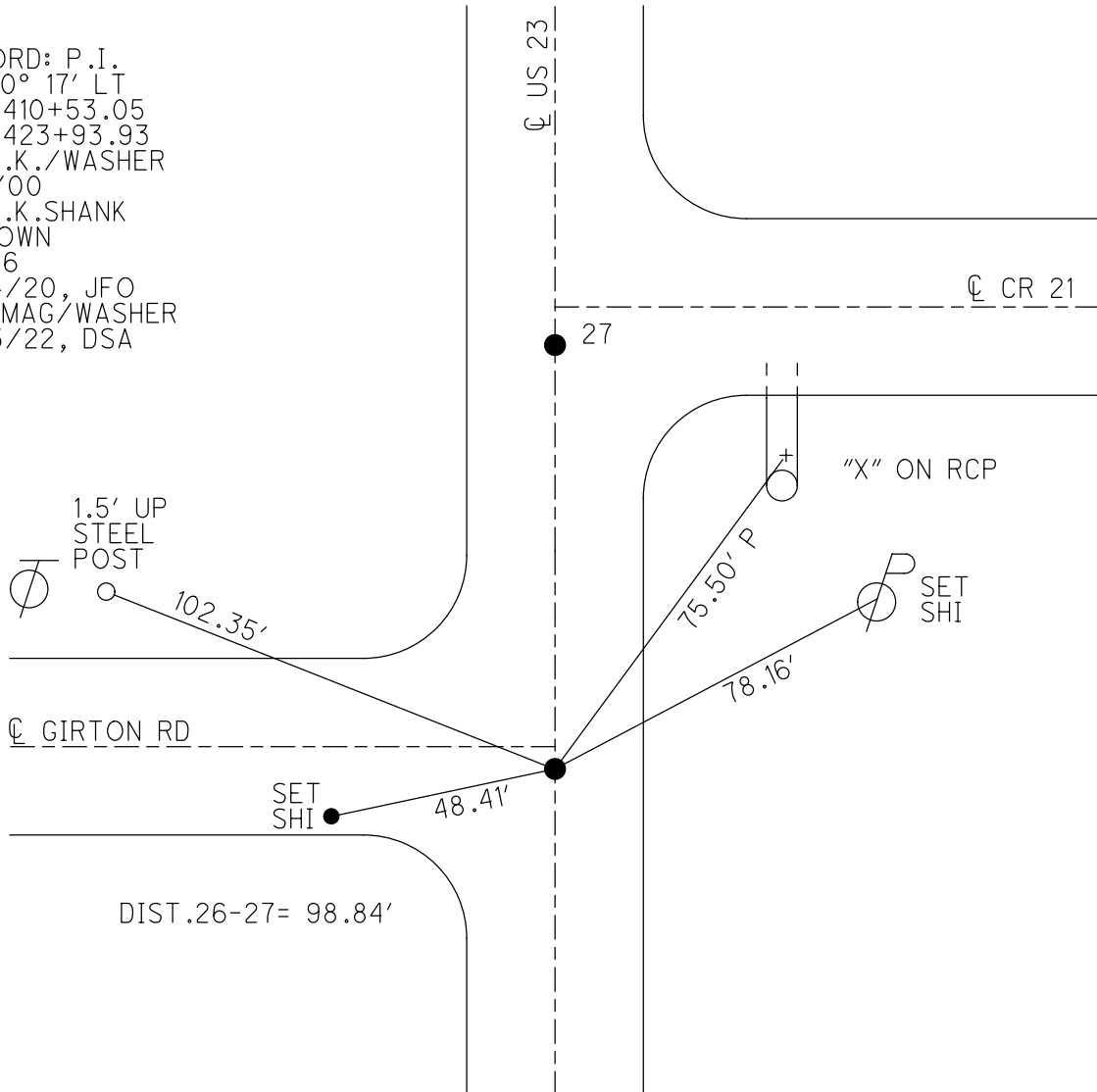
PERSONNEL _____ REFERENCE NO. 26 SHEET 32 OF 46
 NOTES RHOADES DATE 4/20/21 ROUTE US 23
 H.C. O'DONNELL WEATHER SUNNY COUNTY WOOD
 R.C. KETNER TEMP. 38° TOWNSHIP MONTGOMERY
AUBLE SECTION 24
 DWG BY RHOADES PID 102922 T 4 N R 12 E

TYPE MONUMENT R.R.SPIKE
~~ON SURFACE~~ - BELOW 6"
 OFFSET CL PAVEMENT ON LT : RT
11.7 TO RT EDGE PAVEMENT
 STATION: 423+93.26



HORIZ.DATUM: NAD83(2011) GEOID: NAVD88 2018
 GRID: NORTHING: 590223.560 EASTING: 1715953.957

RECORD: P.I.
 $\Delta = 0^\circ 17' \text{ LT}$
 STA 410+53.05
 STA 423+93.93
 FD P.K./WASHER
 5/9/00
 FD P.K.SHANK
 4" DOWN
 REF26
 3/24/20, JFO
 SET MAG/WASHER
 9/23/22, DSA



O.D.O.T. DISTRICT 2 SURVEY OFFICE (USE ONLY)

PERSONNEL

REFERENCE NO. 26

SHEET 26 OF 37

NOTES BARNHISEL

DATE 8/9/91

ROUTE US 23

H.C. VAN DUSEN

WEATHER CLOUDY

COUNTY WOOD

R.C. _____

TEMP. 70°

TOWNSHIP MONTGOMERY

DWG BY AUBLE

PID 102922

SECTION 24

T 4 N R 12 E

TYPE MONUMENT P.K./WASHER

ON SURFACE - ~~BELOW~~ ON

OFFSET ☑ PAVEMENT ON LT : RT

11.7 TO RT EDGE PAVEMENT

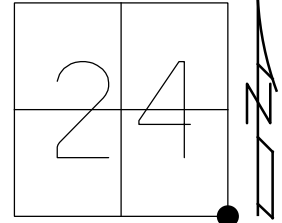
STATION: 424+29

HORZ.DATUM: NAD83(2011)

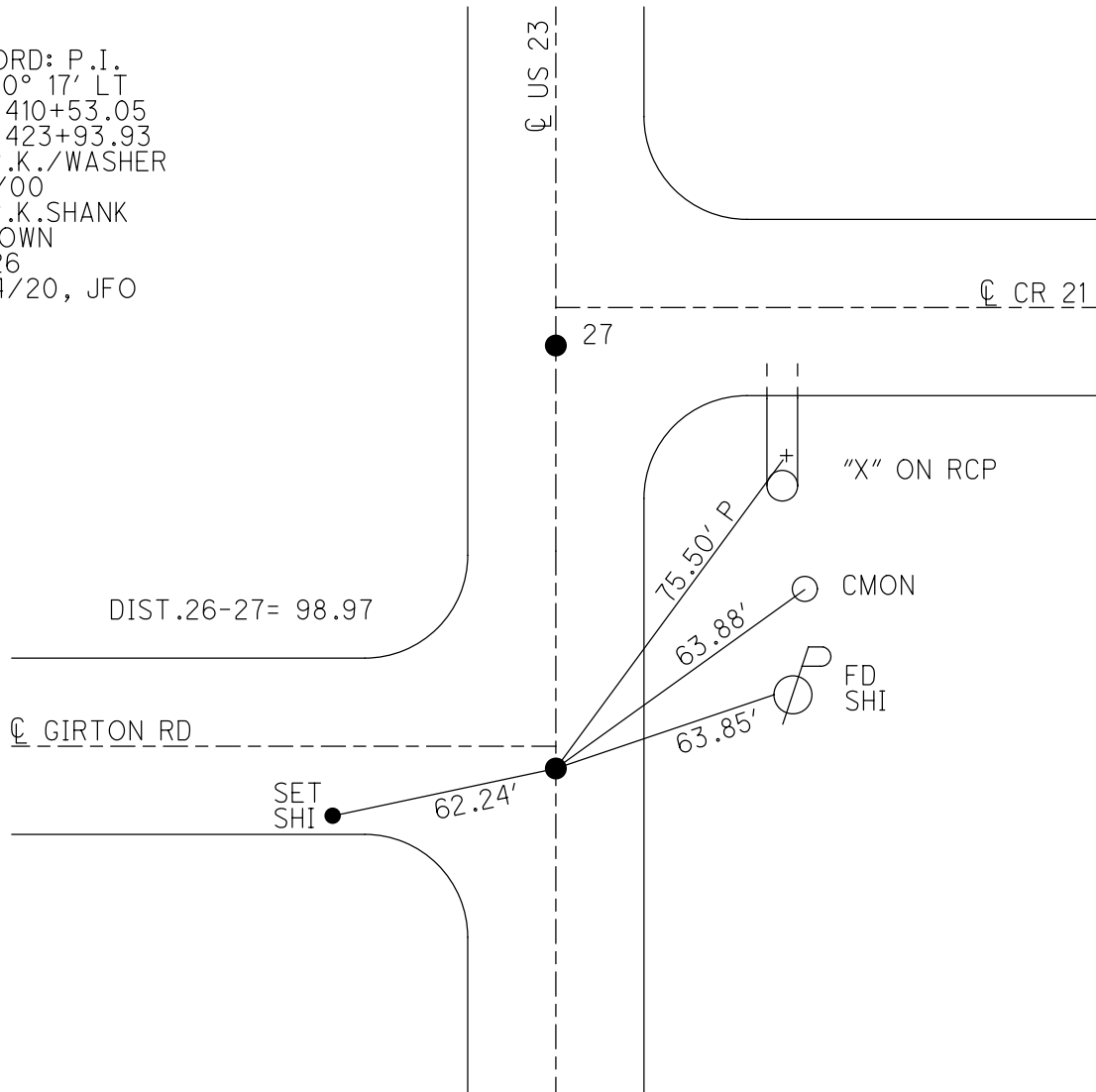
GEOID: NAVD88 2018

GRID: NORTHING: 590223.560

EASTING: 1715953.957



RECORD: P.I.
 $\Delta = 0^\circ 17' \text{ LT}$
 STA 410+53.05
 STA 423+93.93
 FD P.K./WASHER
 5/9/00
 FD P.K.SHANK
 4" DOWN
 REF26
 3/24/20, JFO



O.D.O.T. DISTRICT 2 SURVEY OFFICE

PERSONNEL _____

REFERENCE NO. 26 & 27

SHEET 15 OF 23

NOTES BARNHISEL

H.C. VAN DUSEN

R.C. _____

DATE 8-9-91

WEATHER Cloudy

TEMP. +70°

ROUTE U.S. 23

COUNTY Wood

TOWNSHIP Montgomery

SECTION 24

T 4 N R 12 E

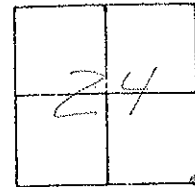
TYPE MONUMENT P.K.'s & WASHERS

ON SURFACE - BELOW yes "BOTH"

LEFT - & PAV'T. - RIGHT yes "BOTH"

11.7 TO RT. EDGE PAVEMENT

S.L.M. 424+29



Recorded: $\Delta = 0^{\circ} - 17' \text{ LT}$
PT "A"
STA: $410 + 53.05 =$
NEW STA: $423 + 93.93$

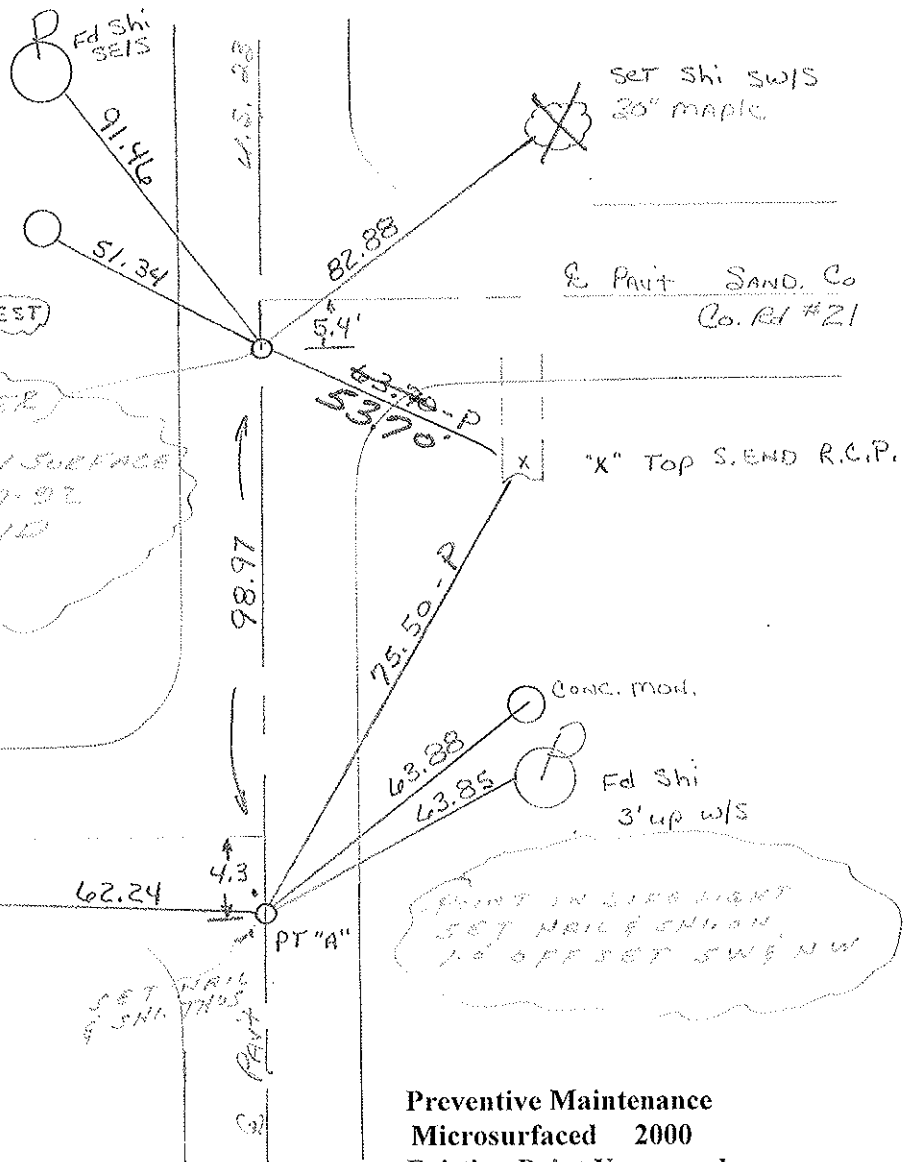
"4" ON E. FACE
OF STEEL POST
2' up
LEARNING WEST

P.K. & WASHER
EXPOSED
2" BELOW SURFACE
9-27-92
BVD

E PAVT GIBSON RL.

SET NAIL & SHI

SET NAIL & SHI
3' up



POINT IN LIME LIGHT
SET NAIL & SHI ON
1" OFF SET SW & NW

Preventive Maintenance
Microsurfaced 2000
Existing Point Uncovered
Date 5-9-2000

County Wood S.R. U.S. 23

Date 7-29-81

Township Montgomery

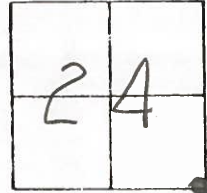
Weather Partly Cloudy

Section 24

Temp. + 72°

T4N, R12E

Personnel HOFFMAN

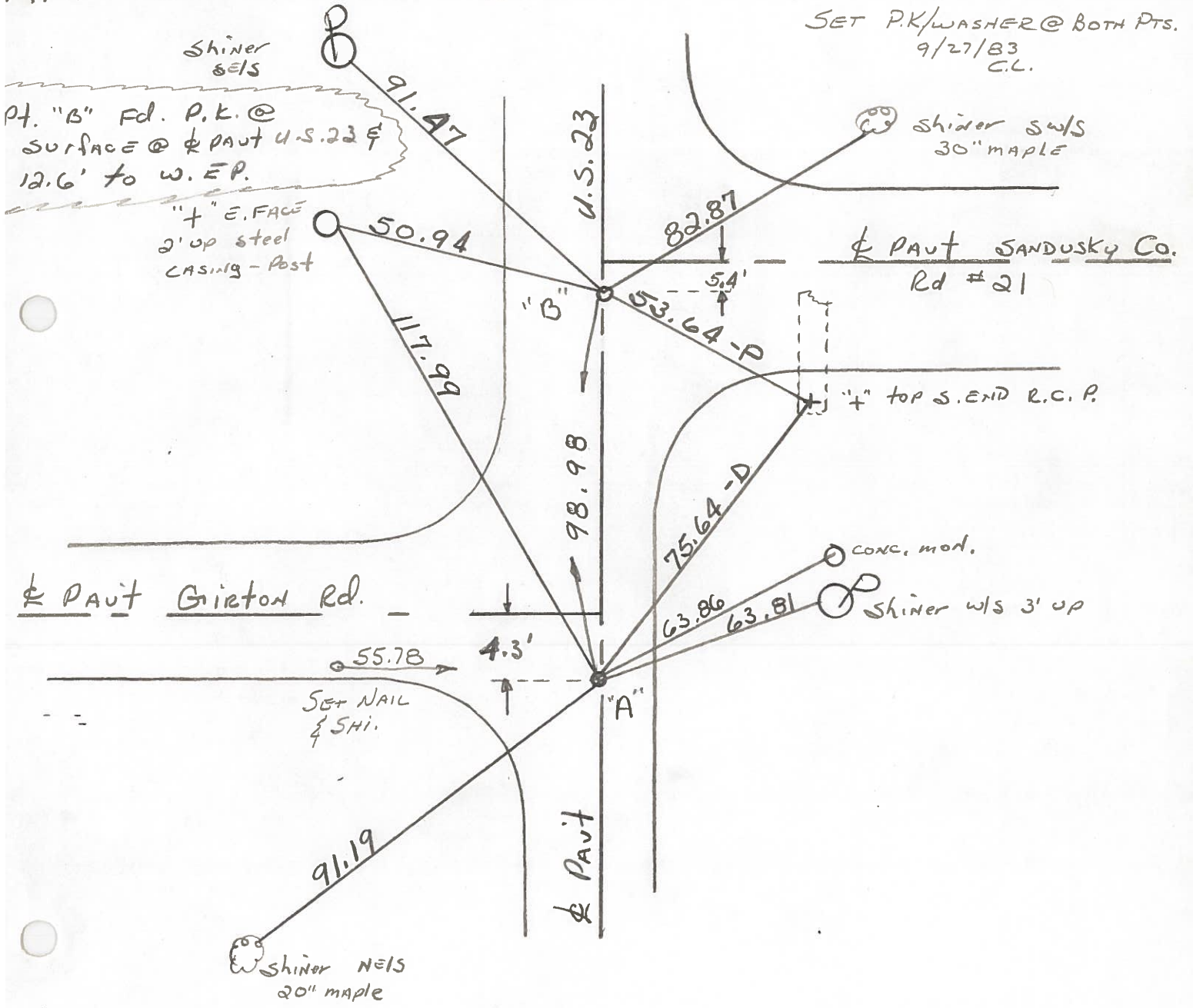


#26-27 Loehrke

Householder

Pt. "A" Fd. P.K. @ surface @ \perp PAUT U.S. 23 $\frac{1}{2}$ 12.0' to E. EP, S.C.M. = 425+0

SET P.K./WASHER @ BOTH PTS.
9/27/83
C.L.



Pt. "B" Fd. P.K. @ surface @ \perp PAUT U.S. 23 $\frac{1}{2}$ 12.6' to W. EP.

"+" E. FACE
2' up steel
CASING - Post

\perp PAUT SANDUSKY Co.
Rd # 21

"+" TOP S. END R.C.P.

\perp PAUT Gorton Rd.

SET NAIL
& SHI.

conc. mod.
shiner w/s 3' up

shiner NELS
20" maple

Pt. "A" STA. 410 + 53.05 = New Survey STA. 423 + 93.93 - Δ = 0° - 17' Lt. ~ Rec.

PERSONNEL TITLE PERSONNEL TITLE
 CK. BY _____ COUNTY WOOD DATE OK-7-17-70
 SILVESTER _____ S. R. U.S. #23 WEATHER _____
 BURNSIDE _____ SEC. _____ TEMP. _____
 SMITH _____

DESCRIPTION CONTROL TIES JOB NO. _____

LEFT	CENTER LINE	RIGHT
FOUND P.K. NAIL 98.96' NORTH OF S.E. COR. SEC. 24 MONTGOMERY TWP. #381-A #27	✓	"X" S. END CONC. PIPE S.E. 53.59 ^(P) 8" CASING POST W. 50.33' SHINER 24" MAPLE N.E. 83.00
STA. 410+53.05 NEW SURVEY STA. = 423+93.93 Δ = 0°-17' LT. S.E. COR. SEC. 24 MONTGOMERY TWP R.R. SPK. OVER STONE SET. P.K. GIRTON ROAD #381 #26	✓	8" CASING FENCE POST W.N.W. 102.34 N.E. COR. CONC. WALK S.W. 67.55 SHINER P. POLE E. 63.80 "X" S. END CONC. PIPE N.E. 75.70 ^(D)
DID NOT FIND #380 #25		
STA. 367+63.20 ✓ NEW SURVEY STA. = 381+0462 Δ = 0°-02' RT. R.R. SPK. OVER STONE SET P.K. <u>HIGH STREET - RISINGSUN</u> #379 #24-A		S.E. COR. HOUSE FON. N.W. 53.31 N.E. COR. PORCH SLAB S.W. 52.63 SHINER IN CABLE POLE E.S.E. 47.25 SHINER 18" BOX ELDER N.W. 41.75

PERSONNEL TITLE PERSONNEL TITLE COUNTY Sandusky DATE 1/17/66
 recorded in Stone Record S. R. # 199 WEATHER
 Jan. 1965 SEC. Record # 1 to S.R. # 6 TEMP.

DESCRIPTION Control Point Ties & R/W - Scott Twp JOB NO.
 LEFT CENTER LINE RIGHT

R.R. Spike over stone - stone under 10' Hwy cut - Waco Co. Eng Dept 1956 Ref Mons. N.E. 67.95 SE. 63.17 SW. 26.83' SE & M.H. Lid 33.22'		co. Ref # 5 NW cor sec 7 Co Rd # 45 East Bradner Rd West
R.R. Spk over stone by state Hwy Ref Mons SW. 47.84 E 76.93' NW to S.E. Cor House 83.91'	59.40	sw cor 12 Co Ref # 8 Gusborg Pike west Stone found by WPA 1939 Point checks with Govt Twp Offset 59.40' Jan. 1965 Ref Mons ESE 73.88' - N.E. 87.00' - N.W. 42.92'
R.R. Spk. over stone by state Hwy Ref Mons. E to 't' cut in east end of No. Bridge Abut - 22.93' SSE to 't' cut in east end of So. " " - 34.05' SW to 't' cut in west end of No. " " 43.67' SSW to 't' cut in west end of So. " " - 56.78'		Merrill Rd. west Co Ref # 13
	Co Ref # 14 w 2.19 →	Point set with Govt Twp offset 116.82' Jan 1965 Ref Mons. N.E. 64.10 - N.W. 59.53
R.R. Spike over stone by state Hwy Ref Mons NW 55.75 - SW. 47.29'		← Co Ref. # 15
	Co Ref # 16 → Co. Rd # 21 →	sw cor 19 Point set with Govt Twp offset 99.00' Jan. 1965 Ref. Mons. W to 6" dia steel cor. post - 50.39 'S.W. 73.93' SE. 110.06'
R.R. Spike over stone by state Hwy Ref Mons E. - 63.90' N.W. 99.15'		Girton Rd West ← Co. Ref # 17
Stone from old References N.W. to S.E. Cor House 53.33' S.W. to N.E. Cor Porch 52.65' N.W. to S.E. Cor House wing 70.05' S.E. to Wising 47.24'	104.35'	High St. Ref # 20

PERSONNEL	TITLE	PERSONNEL	TITLE

COUNTY Wood DATE ok 12-10-57

S. R. #199 WEATHER

SEC. TEMP.

DESCRIPTION LEFT CENTER LINE RIGHT JOB NO.

Sta. 410+53.05			N.E. cor. conc. walk	Sw.	67.63
New survey = 423+93.93			R/W mon.	N.W.	36.49
$\Delta = 0^\circ - 17' Lt.$			R/W mon.	N.E.	84.36
S.E. cor. sec. 24 Montgomery			R/W mon.	E.	29.80
R.R. spk. over stone - P.K. nail			S. end of corr. iron pipe	Sw.	24.95
			Shiner in P.P.	E.	63.80
	26	#381	(Not plumbed) X-in S. end conc. pipe	N.E.	75.75
Sta. 437+01.60			R/W mon.	W.	29.91'
New Survey = 450+42.87			R/W mon.	E.	29.62'
$\Delta = 0^\circ - 01' Lt.$			R.R. spk. in T.P.	S.E.	57.50'
E. 1/4 post sec. 24			R.R. spk. in 15' gsh	Sw.	63.00
R.R. spk. - P.K. nail			Shiner in P.P.	W.	38.50'
			Shiner in P.P.	N.E.	62.75
	28	#382	Painted X-on face iron corner		
			fence post	Sw.	119.45
Sta. 463+50.00			R.R. spk. in 36" Elm.	N.W.	103.48
New Survey = 476+91.17			X-in N.W. Cor. br. curb	S.E.	18.10'
$\Delta = 0^\circ - 00''$			R/W mon.	S.E.	39.80'
S.E. cor. sec. 13			R/W mon.	Sw.	41.75'
R.R. spk. over stone			N.E. cor. br. curb	Sw.	33.30
(Ties gone)					
	29	#383			
Sta. 489+15.25			Shiner in 18" apple	N.W.	60.10'
New survey = 502+56.32			R/W mon.	W.	30.40'
$\Delta = 0^\circ - 00''$			Well casing	S.W.	53.40'
R.R. spike on line			Shi. at 54.0 N.E.		
	30	#384	from well casing		