

O.D.O.T. DISTRICT 2 SURVEY OFFICE (USE ONLY)

PERSONNEL

REFERENCE NO. 27

SHEET 33 OF 46

NOTES RHOADES  
 H.C. O'DONNELL  
 R.C. KETNER  
AUBLE

DATE 4/20/21  
 WEATHER SUNNY  
 TEMP. 38°

ROUTE US 23  
 COUNTY WOOD  
 TOWNSHIP MONTGOMERY  
 SECTION 24

DWG BY RHOADES PID 102922

T 4 N R 12 E

TYPE MONUMENT P.K.NAIL

~~ON SURFACE~~ - BELOW 4"

OFFSET  $\phi$  PAVEMENT ON LT : RT

12.6' TO LT EDGE PAVEMENT

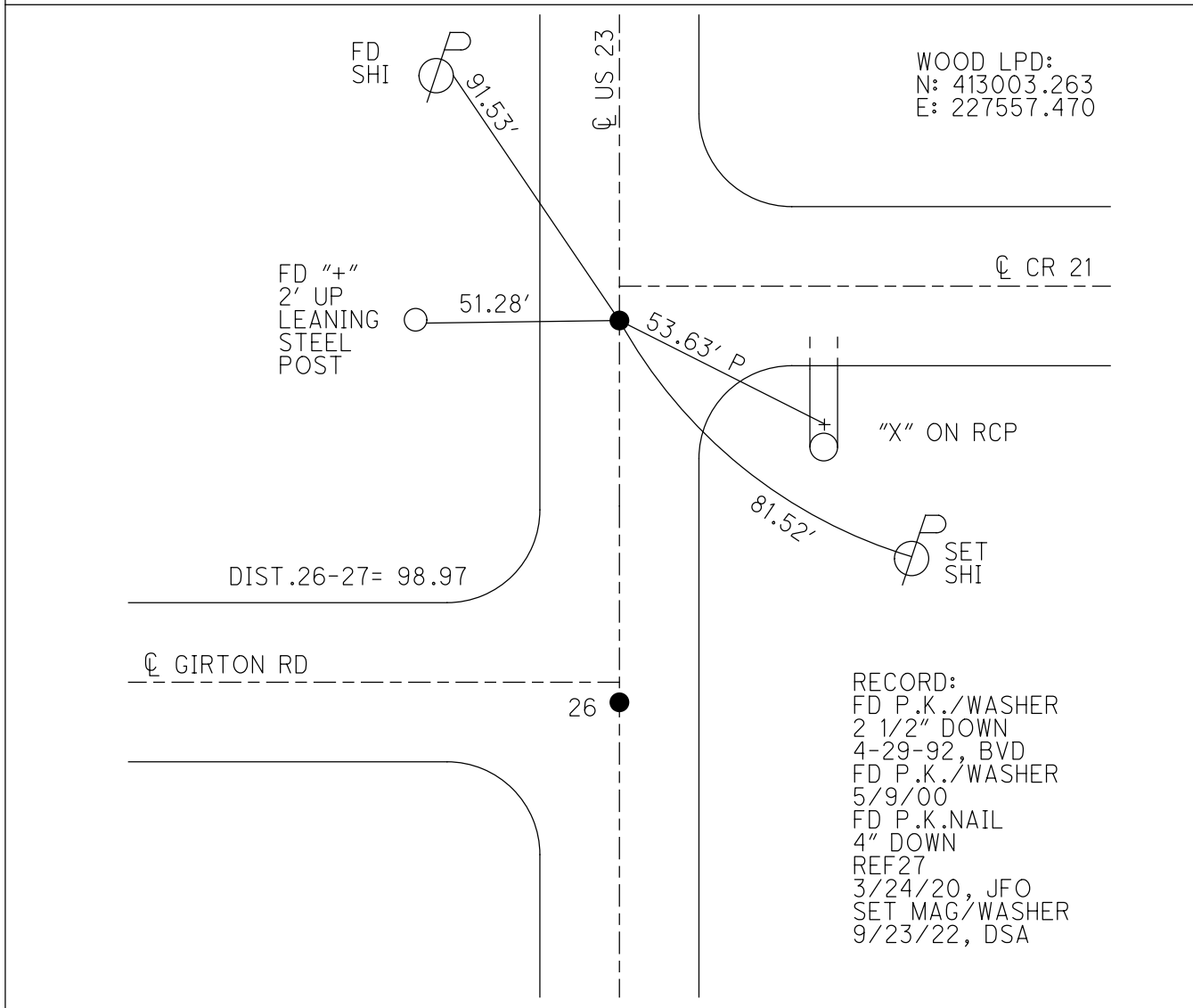
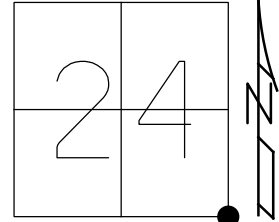
STATION: 424+92.1

HORZ.DATUM: NAD83(2011)

GEOID: NAVD88 2018

GRID: NORTHING: 590322.440

EASTING: 1715957.151



O.D.O.T. DISTRICT 2 SURVEY OFFICE (USE ONLY)

PERSONNEL

REFERENCE NO. 27

SHEET 33 OF 46

NOTES RHOADES

DATE 4/20/21

ROUTE US 23

H.C. O'DONNELL

WEATHER SUNNY

COUNTY WOOD

R.C. KETNER  
AUBLE

TEMP. 38°

TOWNSHIP MONTGOMERY

DWG BY RHOADES PID 102922

SECTION 24  
T 4 N R 12 E

TYPE MONUMENT P.K.NAIL

~~ON SURFACE~~ - BELOW 4"

OFFSET Q PAVEMENT ON LT : RT

12.6' TO LT EDGE PAVEMENT

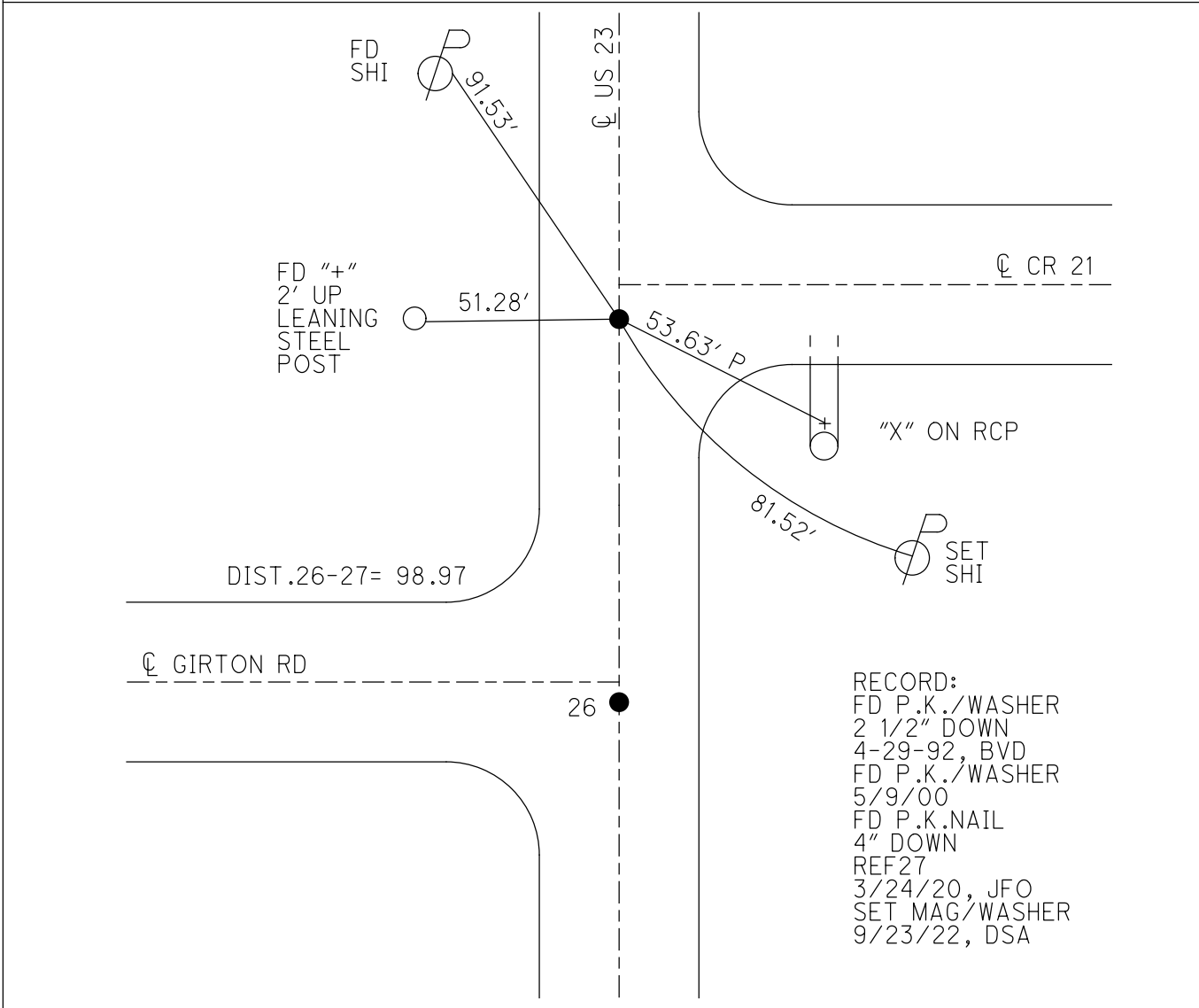
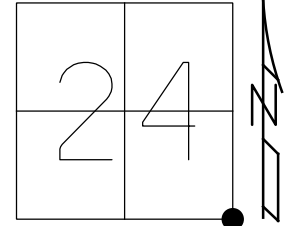
STATION: 424+92.1

HORZ.DATUM: NAD83(2011)

GEOID: NAVD88 2018

GRID: NORTHING: 590322.440

EASTING: 1715957.151



RECORD:  
 FD P.K./WASHER  
 2 1/2" DOWN  
 4-29-92, BVD  
 FD P.K./WASHER  
 5/9/00  
 FD P.K.NAIL  
 4" DOWN  
 REF27  
 3/24/20, JFO  
 SET MAG/WASHER  
 9/23/22, DSA

O.D.O.T. DISTRICT 2 SURVEY OFFICE (USE ONLY)

PERSONNEL

REFERENCE NO. 27

SHEET 27 OF 37

NOTES BARNHEISEL DATE 8/12/91  
 H.C. VAN DUSEN WEATHER SUNNY  
 R.C. \_\_\_\_\_ TEMP. 83°

ROUTE US 23  
 COUNTY WOOD  
 TOWNSHIP MONTGOMERY  
 SECTION 24

DWG BY AUBLE PID 102922

T 4 N R 12 E

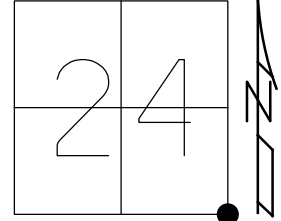
TYPE MONUMENT P.K./WASHER

ON SURFACE - ~~BELOW~~ ON

OFFSET  $\odot$  PAVEMENT ON LT : RT

- TO - EDGE PAVEMENT

STATION: 425+27

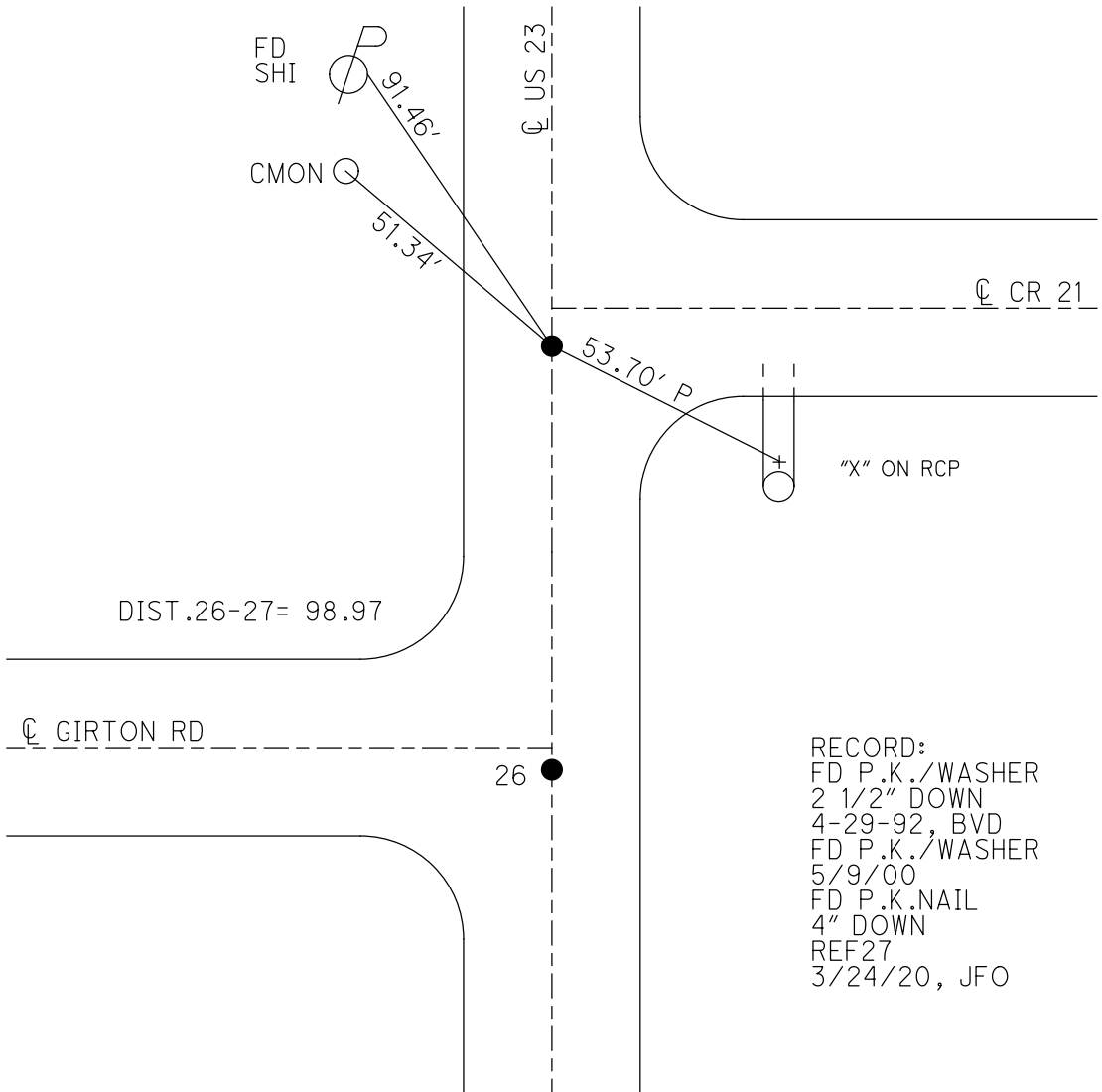


HORIZ.DATUM: NAD83(2011)

GEOID: NAVD88 2018

GRID: NORTHING: 590322.440

EASTING: 1715957.151



RECORD:  
 FD P.K./WASHER  
 2 1/2" DOWN  
 4-29-92, BVD  
 FD P.K./WASHER  
 5/9/00  
 FD P.K.NAIL  
 4" DOWN  
 REF27  
 3/24/20, JFO

# O.D.O.T. DISTRICT 2 SURVEY OFFICE

PERSONNEL \_\_\_\_\_

REFERENCE NO. 26 & 27

SHEET 15 OF 23

NOTES BARNHISEL

H.C. VAN DUSEN

R.C. \_\_\_\_\_

DATE 8-9-91

WEATHER Cloudy

TEMP. +70°

ROUTE U.S. 23

COUNTY Wood

TOWNSHIP Montgomery

SECTION 24

T 4 N R 12 E

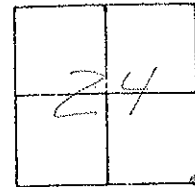
TYPE MONUMENT P.K.'s & WASHERS

ON SURFACE - BELOW yes "BOTH"

LEFT - & PAV'T. - RIGHT yes "BOTH"

11.7 TO RT. EDGE PAVEMENT

S.L.M. 424+29



Recorded:  $\Delta = 0^{\circ} - 17' \text{ LT}$   
PT "A"  
STA:  $410 + 53.05 =$   
NEW STA:  $423 + 93.93$

"4" ON E. FACE  
OF STEEL POST  
2' up

LEANING WEST

P.K. & WASHER  
EXPOSED  
2" BELOW SURFACE  
9-27-92  
BVD

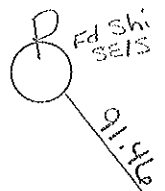
E PAVT GIBSON RL.

SET NAIL & Shi

62.24

PT "A"

SET NAIL & SHI  
3' up



SET Shi SW/S  
26" MAPLE

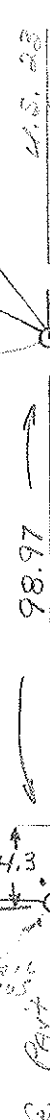
E PAVT SAND. Co  
Co. Rd #21

"X" Top S. END R.C.P.

Conc. Mod.

Fd Shi  
3' up w/s

POINT IN LIME LIGHT  
SET NAIL & SHI ON  
1" OFF SET SW & NW



Preventive Maintenance  
Microsurfaced 2000  
Existing Point Uncovered  
Date 5-9-2000

County Wood S.R. U.S. 23

Date 7-29-81

Township Montgomery

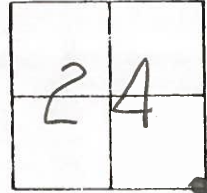
Weather Partly Cloudy

Section 24

Temp. + 72°

T4N, R12E

Personnel HOFFMAN

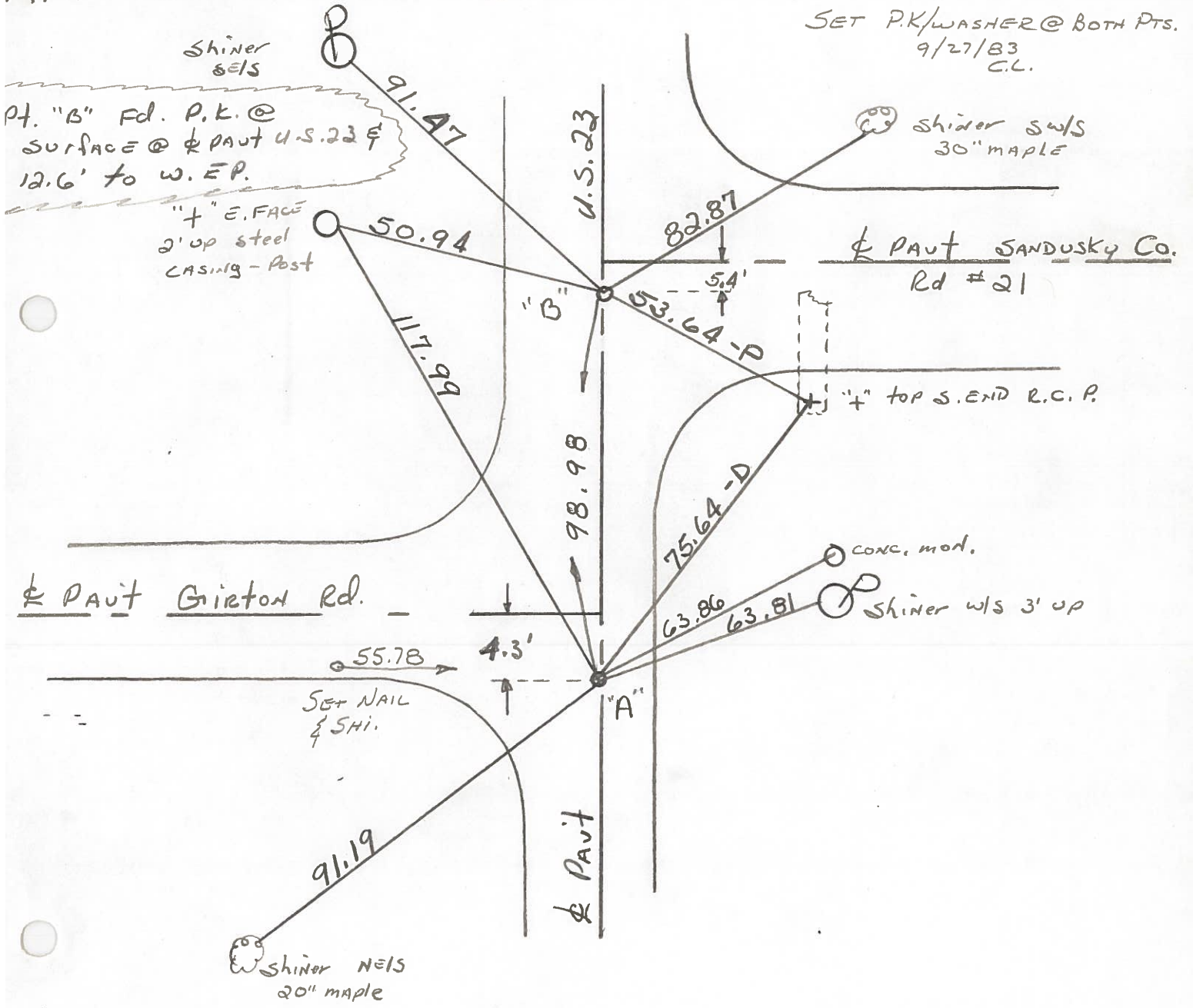


# 26-27 Loehrke

Householder

Pt. "A" Fd. P.K. @ surface @  $\perp$  PAUT U.S. 23  $\frac{1}{2}$  12.0' to E. EP, S.C.M. = 425+0

SET P.K./WASHER @ BOTH PTS.  
9/27/83  
C.L.



Pt. "B" Fd. P.K. @ surface @  $\perp$  PAUT U.S. 23  $\frac{1}{2}$  12.6' to W. EP.

"+" E. FACE  
2' up steel  
CASING - Post

$\perp$  PAUT SANDUSKY Co.  
Rd # 21

"+" TOP S. END R.C.P.

$\perp$  PAUT Gorton Rd.

conc. mod.  
Shiner w/s 3' up

SET NAIL  
& SHI.

Shiner NELS  
20" maple

Pt. "A" STA. 410 + 53.05 = New Survey STA. 423 + 93.93 -  $\Delta$  = 0° - 17' Lt. ~ Rec.

PERSONNEL TITLE PERSONNEL TITLE  
 CK. BY \_\_\_\_\_ COUNTY WOOD DATE OK-7-17-70  
 SILVESTER \_\_\_\_\_ S. R. U.S. #23 WEATHER \_\_\_\_\_  
 BURNSIDE \_\_\_\_\_ SEC. \_\_\_\_\_ TEMP. \_\_\_\_\_  
 SMITH \_\_\_\_\_

DESCRIPTION CONTROL TIES JOB NO. \_\_\_\_\_  
 LEFT CENTER LINE RIGHT

<p>FOUND P.K. NAIL 98.96'                  NORTH OF S.E. COR. SEC. 24                  MONTGOMERY TWP.                  #381-A</p>	<p>#27</p>	<p>✓</p>	<p></p>	<p></p>	<p>"X" S. END CONC. PIPE S.E. 53.59<sup>(P)</sup>                  8" CASING POST W. 50.33'                  SHINER 24" MAPLE N.E. 83.00</p>
<p>STA. 410+53.05                  NEW SURVEY STA. =                  423+93.93                  Δ = 0°-17' LT.                  S.E. COR. SEC. 24                  MONTGOMERY TWP                  R.R. SPK. OVER STONE                  SET. P.K. GIRTON ROAD                  #381</p>	<p>#26</p>	<p>✓</p>	<p></p>	<p></p>	<p>8" CASING FENCE POST W.N.W. 102.34                  N.E. COR. CONC. WALK S.W. 67.55                  SHINER P. POLE E. 63.80                  "X" S. END CONC. PIPE N.E. 75.70<sup>(D)</sup></p>
<p>DID NOT FIND                  #380</p>	<p>#25</p>	<p></p>	<p></p>	<p></p>	<p></p>
<p>STA. 367+63.20 ✓                  NEW SURVEY STA. =                  381+0462                  Δ = 0°-02' RT.                  R.R. SPK. OVER STONE                  SET P.K.                  HIGH STREET - RISINGSUN                  #379</p>	<p>#24-A</p>	<p>✓</p>	<p></p>	<p></p>	<p>S.E. COR. HOUSE FON. N.W. 53.31                  N.E. COR. PORCH SLAB S.W. 52.63                  SHINER IN CABLE POLE E.S.E. 47.25                  SHINER 18" BOX ELDER N.W. 41.75</p>



PERSONNEL TITLE PERSONNEL TITLE COUNTY Sandusky DATE 1/17/66  
 recorded in Stone Record S. R. # 199 WEATHER  
 Jan. 1965

DESCRIPTION Control Point Ties & R/W - Scott Twp JOB NO.  
 LEFT CENTER LINE RIGHT

R.R. Spike over stone - stone under 10' Hwy cut - Waco Co. Eng Dept 1956 Ref Mons. N.E. 67.95 SE. 63.17 SW. 26.83' SE to M.H. Lid 33.22'		co. Ref # 5 NW cor sec 7 Co Rd # 45 East Bradner Rd West
R.R. Spk over stone by state Hwy Ref Mons SW. 47.84 E 76.93' NW to S.E. Cor House 83.91'	59.40	sw cor 12 Co Ref # 8 Gusborg Pike west Stone found by WPA 1939 Point checks with Govt Twp Offset 59.40' Jan. 1965 Ref Mons ESE 73.88' - N.E. 87.00' - N.W. 42.92'
R.R. Spk. over stone by state Hwy Ref Mons. E to 't' cut in east end of No. Bridge Abut - 22.93' SSE to 't' cut in east end of So. " " - 34.05' SW to 't' cut in west end of No. " " 43.67' SSW to 't' cut in west end of So. " " - 56.78'		Merrill Rd. west Co Ref # 13
	Co Ref # 14 w 2.19	Point set with Govt Twp offset 116.82' Jan 1965 Ref Mons. N.E. 64.10 - N.W. 59.53
R.R. Spike over stone by state Hwy Ref Mons NW 55.75 - SW. 47.29'		Co Ref. # 15
	Co Ref # 16 → Co. Rd # 21 →	sw cor 19 Point set with Govt Twp offset 99.00' Jan. 1965 Ref. Mons. W to 6" dia steel cor. post - 50.39 'S.W. - 73.93' SE. 110.06'
R.R. Spike over stone by state Hwy Ref Mons E. - 63.90' N.W. 99.15'		Girton Rd West ← Co. Ref # 17
Stone from old References N.W. to S.E. Cor House 53.33' S.W. to N.E. Cor Porch 52.65' N.W. to S.E. Cor House wing 70.05' S.E. to Wising 47.24'	104.35'	High St. Ref # 20

PERSONNEL TITLE PERSONNEL TITLE

COUNTY Wood DATE ok 12-10-57

S. R. #199 WEATHER

SEC. TEMP.

DESCRIPTION LEFT CENTER LINE RIGHT JOB NO.

Sta. 410+53.05			N.E. cor. conc. walk	Sw.	67.63
New survey = 423+93.93			R/W mon.	N.W.	36.49
$\Delta = 0^\circ - 17' Lt.$			R/W mon.	N.E.	84.36
S.E. cor. sec. 24 Montgomery			R/W mon.	E.	29.80
R.R. spk. over stone - P.K. nail			S. end of corr. iron pipe	Sw.	24.95
			Shiner in P.P.	E.	63.80
	26	#381	(Not plumbed) X-in S. end conc. pipe	N.E.	75.75
Sta. 437+01.60			R/W mon.	W.	29.91'
New Survey = 450+42.87			R/W mon.	E.	29.62'
$\Delta = 0^\circ - 01' Lt.$			R.R. spk. in T.P.	S.E.	57.50'
E. 1/4 post sec. 24			R.R. spk. in 15' gsh	Sw.	63.00
R.R. spk. - P.K. nail			Shiner in P.P.	W.	38.50'
			Shiner in P.P.	N.E.	62.75
	28	#382	Painted X-on face iron corner		
			fence post	Sw.	119.45
Sta. 463+50.00			R.R. spk. in 36" Elm.	N.W.	103.48
New Survey = 476+91.17			X-in N.W. Cor. br. curb	S.E.	18.10'
$\Delta = 0^\circ - 00''$			R/W mon.	S.E.	39.80'
S.E. cor. sec. 13			R/W mon.	Sw.	41.75'
R.R. spk. over stone			N.E. cor. br. curb	Sw.	33.30
(Ties gone)					
	29	#383			
Sta. 489+15.25			Shiner in 18" apple	N.W.	60.10'
New survey = 502+56.32			R/W mon.	W.	30.40'
$\Delta = 0^\circ - 00''$			Well casing	S.W.	53.40'
R.R. spike on line			Shi. at 54.0 N.E.		
			from well casing		
	30	#384			