

O.D.O.T. DISTRICT 2 SURVEY OFFICE (USE ONLY)

PERSONNEL

REFERENCE NO. 29

SHEET 36 OF 46

NOTES RHOADES
 H.C. O'DONNELL
 R.C. KETNER
AUBLE

DATE 4/20/22
 WEATHER SUNNY
 TEMP. 40°

ROUTE US 23
 COUNTY WOOD
 TOWNSHIP MONTGOMERY
 SECTION 13

DWG BY RHOADES PID 102922

T 4 N R 12 E

TYPE MONUMENT MONBOX W/"+" CUT TOP STONE

ON SURFACE - ~~BELOW~~ ON

OFFSET 12.2 TO RT EDGE PAVEMENT

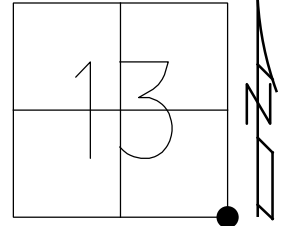
STATION: 476+88.91

HORZ.DATUM: NAD83(2011)

GEOID: NAVD88 2018

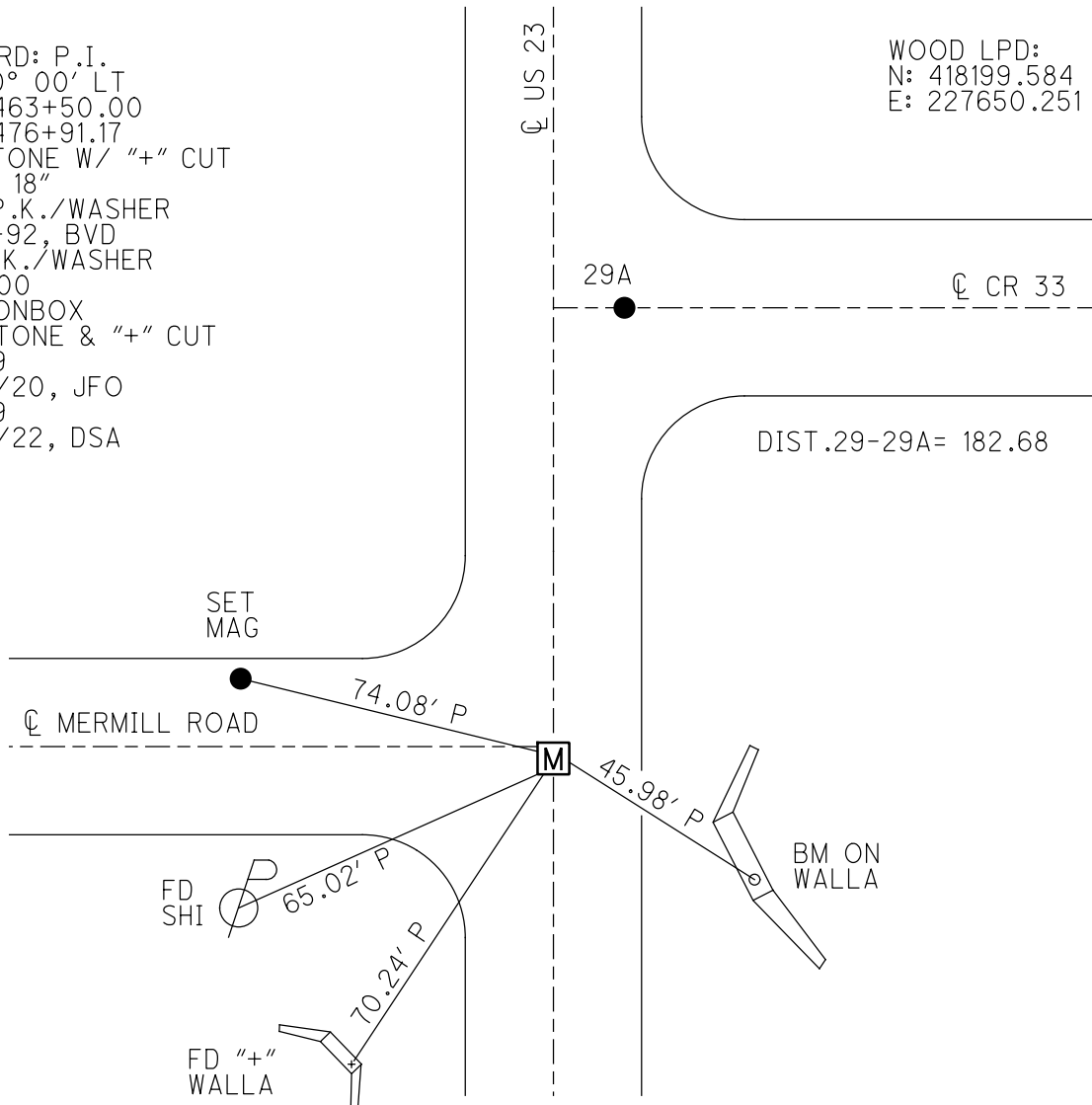
GRID: NORTHING: 595516.652

EASTING: 1716118.487



RECORD: P.I.
 $\Delta = 0^{\circ} 00' \text{ LT}$
 STA 463+50.00
 STA 476+91.17
 FD STONE W/ "+" CUT
 DOWN 18"
 SET P.K./WASHER
 4-29-92, BVD
 FD P.K./WASHER
 5/9/00
 FD MONBOX
 W/ STONE & "+" CUT
 REF29
 3/24/20, JFO
 REF29
 9/23/22, DSA

WOOD LPD:
 N: 418199.584
 E: 227650.251



O.D.O.T. DISTRICT 2 SURVEY OFFICE (USE ONLY)

PERSONNEL

REFERENCE NO. 29

SHEET 36 OF 46

NOTES RHOADES
 H.C. O'DONNELL
 R.C. KETNER
AUBLE

DATE 4/20/22
 WEATHER SUNNY
 TEMP. 40°

ROUTE US 23
 COUNTY WOOD
 TOWNSHIP MONTGOMERY
 SECTION 13

DWG BY RHOADES PID 102922

T 4 N R 12 E

TYPE MONUMENT MONBOX W/"+" CUT TOP STONE

ON SURFACE - ~~BELOW~~ ON

OFFSET \varnothing PAVEMENT ON LT : RT

12.2 TO RT EDGE PAVEMENT

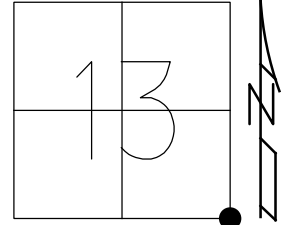
STATION: 476+88.91

HORZ.DATUM: NAD83(2011)

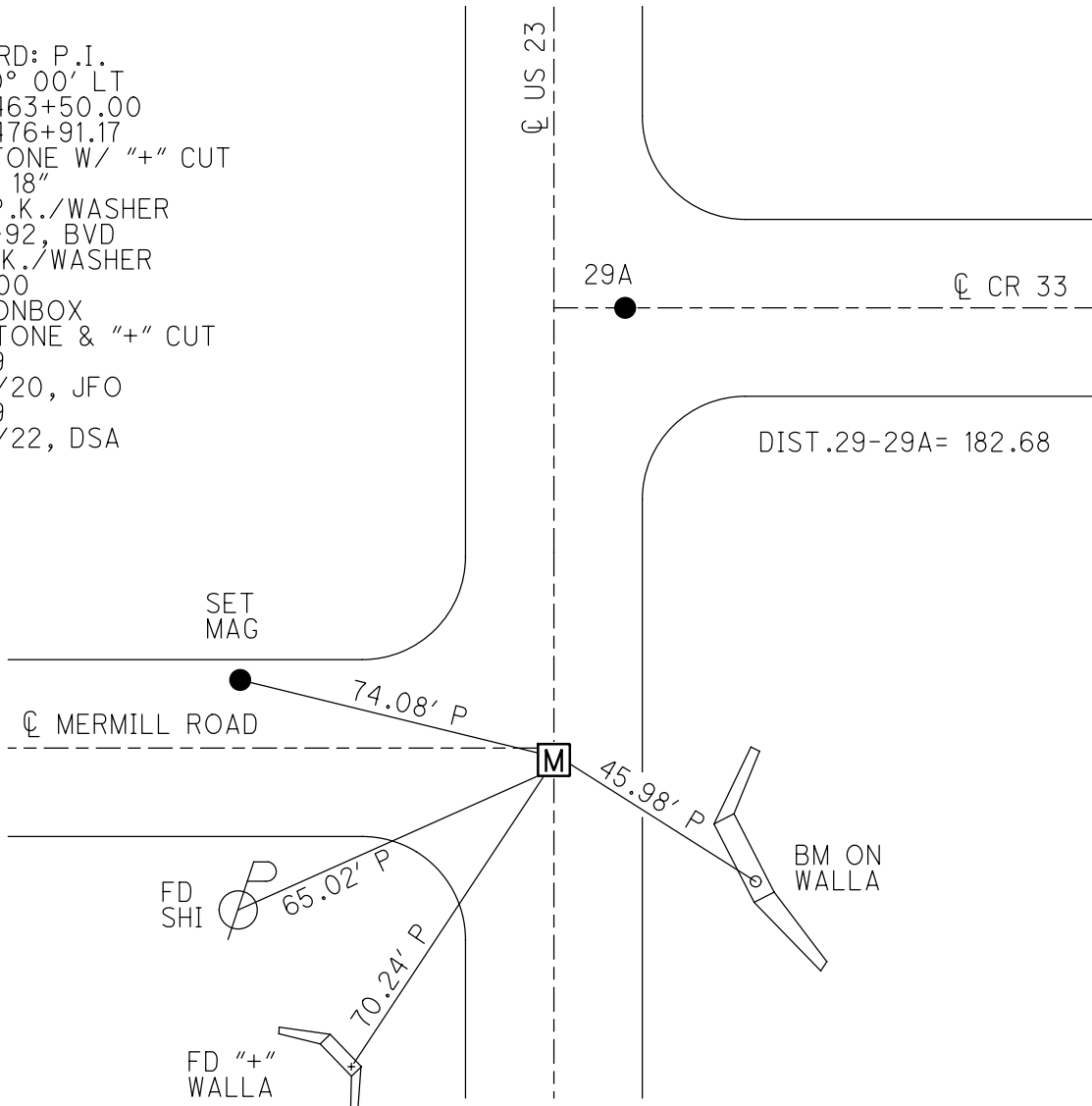
GEOID: NAVD88 2018

GRID: NORTHING: 595516.652

EASTING: 1716118.487



RECORD: P.I.
 $\Delta = 0^{\circ} 00' LT$
 STA 463+50.00
 STA 476+91.17
 FD STONE W/ "+" CUT
 DOWN 18"
 SET P.K./WASHER
 4-29-92, BVD
 FD P.K./WASHER
 5/9/00
 FD MONBOX
 W/ STONE & "+" CUT
 REF29
 3/24/20, JFO
 REF29
 9/23/22, DSA



O.D.O.T. DISTRICT 2 SURVEY OFFICE (USE ONLY)

PERSONNEL

REFERENCE NO. 29

SHEET 29 OF 37

NOTES BARNHISEL

DATE 8/9/91

ROUTE US 23

H.C. VAN DUSEN

WEATHER CLOUDY

COUNTY WOOD

R.C. _____

TEMP. 70°

TOWNSHIP MONTGOMERY

DWG BY AUBLE

PID 102922

SECTION 13

T 4 N R 12 E

TYPE MONUMENT P.K./WASHER

ON SURFACE - ~~BELOW~~ ON

OFFSET 12.2 TO RT PAVEMENT ON LT : RT

EDGE PAVEMENT

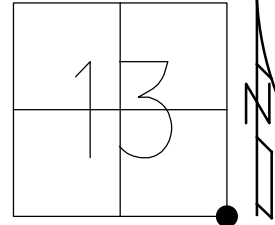
STATION: 477+16

HORZ. DATUM: NAD83(2011)

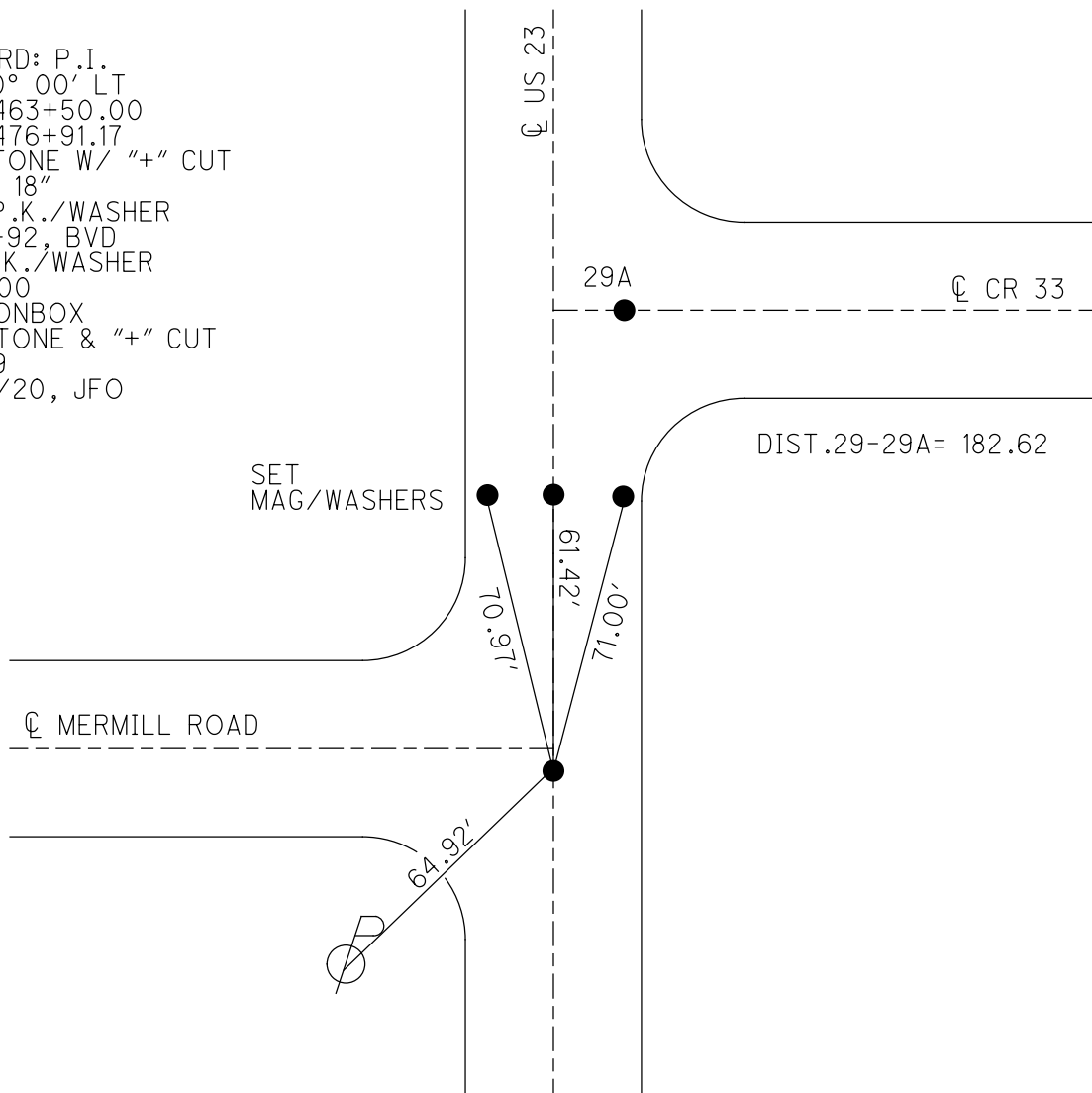
GEOID: NAVD88 2018

GRID: NORTHING: 595516.652

EASTING: 1716118.487



RECORD: P.I.
 $\Delta = 0^{\circ} 00' LT$
 STA 463+50.00
 STA 476+91.17
 FD STONE W/ "+" CUT
 DOWN 18"
 SET P.K./WASHER
 4-29-92, BVD
 FD P.K./WASHER
 5/9/00
 FD MONBOX
 W/ STONE & "+" CUT
 REF29
 3/24/20, JFO



O.D.O.T. DISTRICT 2 SURVEY OFFICE

PERSONNEL _____

REFERENCE NO. 29

SHEET 17 OF 23

NOTES BARNHISEL

H.C. VAN DUSEN

R.C. _____

DATE 8-9-91

WEATHER cloudy

TEMP. +70°

ROUTE U.S. 23

COUNTY WOOD

TOWNSHIP Montgomery

SECTION 13

T 4 N R 12 E

TYPE MONUMENT P.K.'S & WASHERS

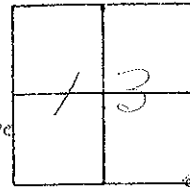
ON SURFACE - BELOW YES "BOTH"

LEFT - C PAV'T. - RIGHT PT "A" 0.5 W. OF E

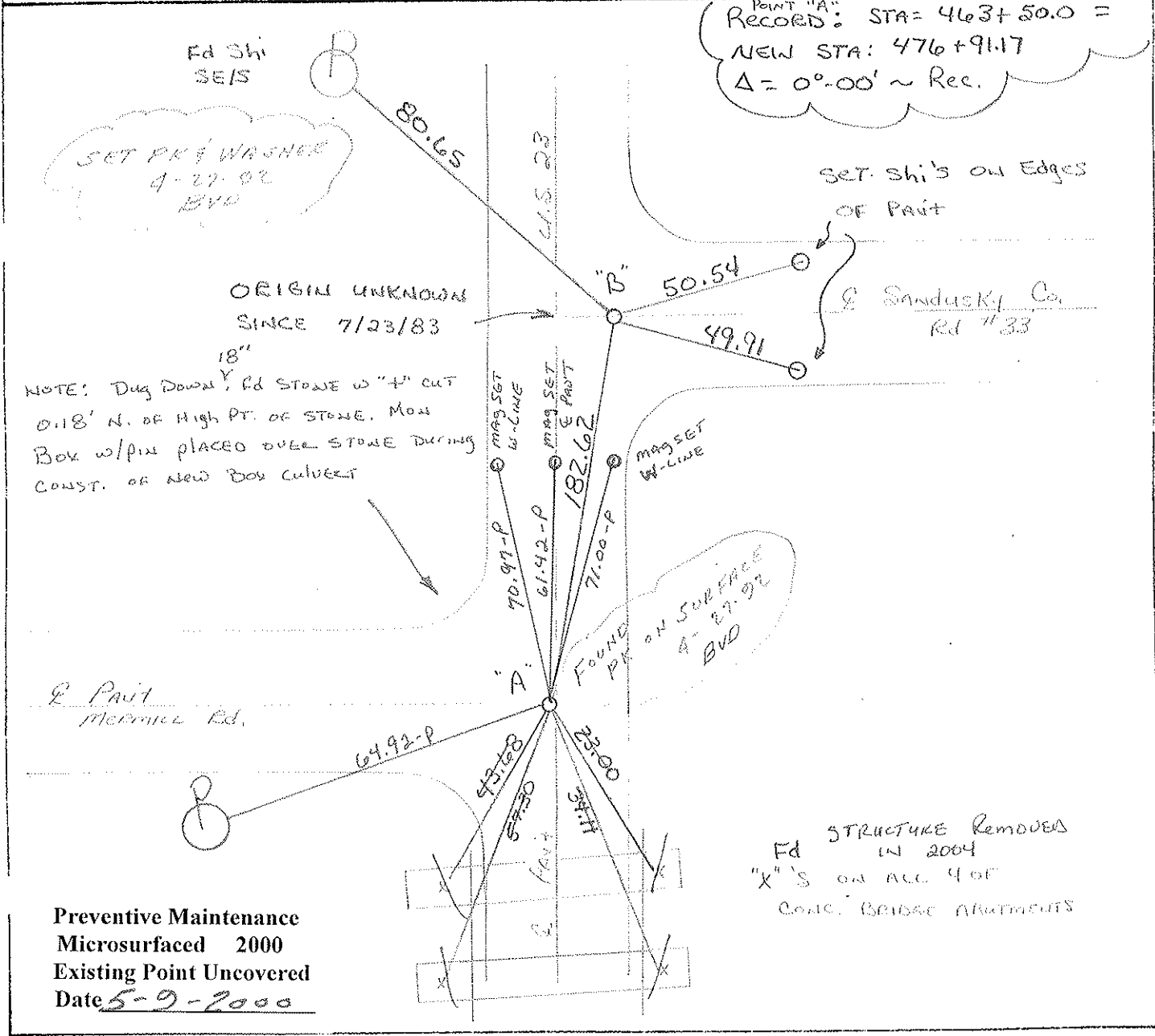
"A" 12.2 TO RT EDGE PAVEMENT

S.L.M. "A" 477+16 & "B" 478+99

PT "B" 6' RT E
1/2 17.3 TO W. Edge



POINT "A"
RECORD: STA = 463+50.0 =
NEW STA: 476+91.7
 $\Delta = 0^{\circ}-00' \sim \text{Rec.}$



Preventive Maintenance
Microsurfaced 2000
Existing Point Uncovered
Date 5-9-2000

County Wood S.R., U.S. 23

Date 7-29-81

Township Montgomery

Weather Partly Cloudy

Section 13

Temp. +75°

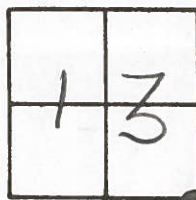
T4N, R12E

Personnel HOFFMAN

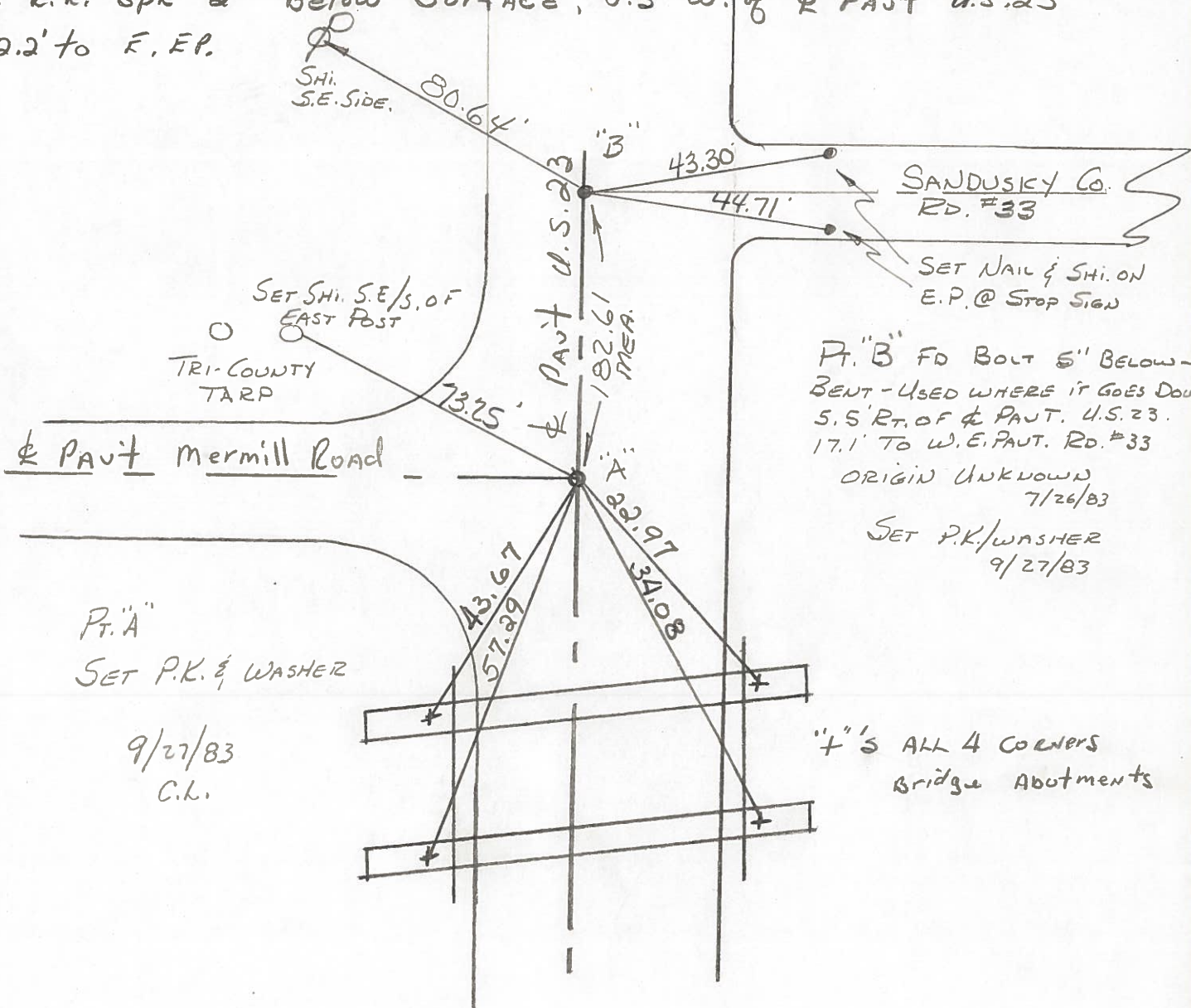
Loehrke

Householder

#29



Fd. R.R. spk 2" Below Surface, 0.5' W. of & PAUT U.S. 23
 Pt. "A" 12.2' to E.P.



STA. 463+50.0 = New Survey STA. 476+91.17 - Δ = 0°-00' ~ REC.

PERSONNEL TITLE PERSONNEL TITLE

CK. BY
SILVESTER
BURNSIDE
SMITH

COUNTY WOOD DATE OK-7-17-70

S. R. U.S. #23 WEATHER _____

SEC. _____ TEMP. _____

DESCRIPTION CONTROL TIES JOB NO. _____

LEFT CENTER LINE RIGHT

STA. 463+50.00 NEW SURVEY STA. = 476+91.17 Δ = 0°-00' S.E. COR. SEC. 13 R.R. SPK. OVER STONE SET P.K. Merrill Road. #353					"X" Top NORTH ABUTMENT E.S.E. 22.94 "X" Top SOUTH ABUTMENT S.E. 34.05 "X" Top NORTH ABUTMENT S.W. 43.61 "X" Top SOUTH ABUTMENT S.S.W. 56.81
STA. 437+01.60 NEW SURVEY STA. = 450+42.87 Δ = 0° 01' LT. E. 1/4 Post SEC. 24 R.R. SPK. - SET P.K. #352					SHINER IN P. POLE W. 38.56 SHINER IN T. POLE S.E. 66.20 MONUMENT N.W. 55.73 PAINTED "X" IRON COR. FENCE POST S.W. 119.45

#29

#28

PERSONNEL TITLE PERSONNEL TITLE COUNTY Sandusky DATE 1/17/66
 recorded in Stone Record S. R. # 199 WEATHER
 Jan. 1965

DESCRIPTION Control Point Ties & R/W - Scott Twp JOB NO.
 LEFT CENTER LINE RIGHT

R.R. Spike over stone - stone under 10' Hwy 41 - Waco Co. Eng Dept 1956 Ref Mons. N.E. 67.95 SE. 63.17 SW. 26.83' SE to M.H. Lid 33.22'		co. Ref # 5 NW cor sec 7 Co Rd # 45 East Bradner Rd West
R.R. Spk over stone by state Hwy Ref Mons SW. 47.84 E 76.93' NW to S.E. Cor House 83.91'	59.40	sw cor 12 Co Ref # 8 Gusborg Pike west Stone found by WPA 1939 Point checks with Govt Twp Offset 59.40' Jan. 1965 Ref Mons ESE 73.88' - N.E. 87.00' - N.W. 42.92'
R.R. Spk. over stone by state Hwy Ref Mons. E to 't' cut in east end of No. Bridge Abut - 22.93' SSE to 't' cut in east end of So. " " - 34.05' SW to 't' cut in west end of No. " " 43.67' SSW to 't' cut in west end of So. " " - 56.78'		Merrill Rd. west Co Ref # 13
	Co Ref # 14 w 2.19	Point set with Govt Twp offset 116.82' Jan 1965 Ref Mons. N.E. 64.10 - N.W. 59.53
R.R. Spike over stone by state Hwy Ref Mons NW 55.75 - SW. 47.29'		Co Ref. # 15
	Co Ref # 16 → Co. Rd # 21 →	sw cor 19 Point set with Govt Twp offset 99.00' Jan. 1965 Ref. Mons. W to 6" dia steel cor. post - 50.39 'S.W. 73.93' SE. 110.06'
R.R. Spike over stone by state Hwy Ref Mons E. - 63.90' N.W. 99.15'		Girton Rd West ← Co. Ref # 17
Stone from old References N.W. to S.E. Cor House 53.33' S.W. to N.E. Cor Porch 52.65' N.W. to S.E. Cor House wing 70.05' S.E. to Wising 47.24'	104.35'	High St. Ref # 20

PERSONNEL	TITLE	PERSONNEL	TITLE

COUNTY Wood DATE OK 12-10-57

S. R. #199 WEATHER _____

SEC. _____ TEMP _____

DESCRIPTION	LEFT	CENTER LINE	RIGHT	JOB NO.
Sta. 410+53.05 New Survey = 423+93.93 $\Delta = 0^\circ - 17' \text{ Lt.}$ S.E. cor. sec. 24 Montgomery R.R. spike over stone - P.K. nail			N.E. cor. conc. walk S.W. R/W mon. N.W. R/W mon. N.E. R/W mon. E. S. end of corr. iron pipe S.W. Shiner in P.P. E. (Not plumbed) X-in S. end conc. pipe N.E.	67.6 36.4 84.3 29.8 24.9 63.8 75.7
26 #381				
Sta. 437+01.60 New Survey = 450+42.87 $\Delta = 0^\circ - 01' \text{ Lt.}$ E. 1/4 post sec. 24 R.R. spike - P.K. nail			R/W mon. W. R/W mon. E. R.R. spike in T.P. S.E. R.R. spike in 15' gash S.W. Shiner in P.P. W. Shiner in P.P. N.E. Painted X on face iron corner fence post S.W.	29.9 29.6 57.5 63.0 38.5 62.7 119.4
28 #382				
Sta. 463+50.00 New Survey = 476+91.17 $\Delta = 0^\circ - 00''$ S.E. cor. sec. 13 R.R. spike over stone (Ties gone)			R.R. spike in 36" Elm. N.W. X-in N.W. Cor. br. curb S.E. R/W mon. S.E. R/W mon. S.W. N.E. cor. br. curb S.W.	103.4 18.1 39.8 41.7 33.3
29 #383				
Sta. 489+15.25 New Survey = 502+56.32 $\Delta = 0^\circ - 00''$ R.R. spike on line			Shiner in 18" apple N.W. R/W mon. W. Well casing S.W. Sh. at 54.0 N.E. from well casing	60.1 30.4 53.4
30 #384				