

O.D.O.T. DISTRICT 2 SURVEY OFFICE (USE ONLY)

PERSONNEL

REFERENCE NO. 30

SHEET 38 OF 46

NOTES RHOADES DATE 4/20/22  
 H.C. O'DONNELL WEATHER SUNNY  
 R.C. KETNER TEMP. 50°  
AUBLE

ROUTE US 23  
 COUNTY WOOD  
 TOWNSHIP MONTGOMERY  
 SECTION 13  
 T 4 N R 12 E

DWG BY RHOADES PID 102922

TYPE MONUMENT P.K./WASHER

ON SURFACE - ~~BELOW~~ ON

OFFSET  $\text{C}$  PAVEMENT 2' ~~LT~~ : RT

13.6 TO LT EDGE PAVEMENT

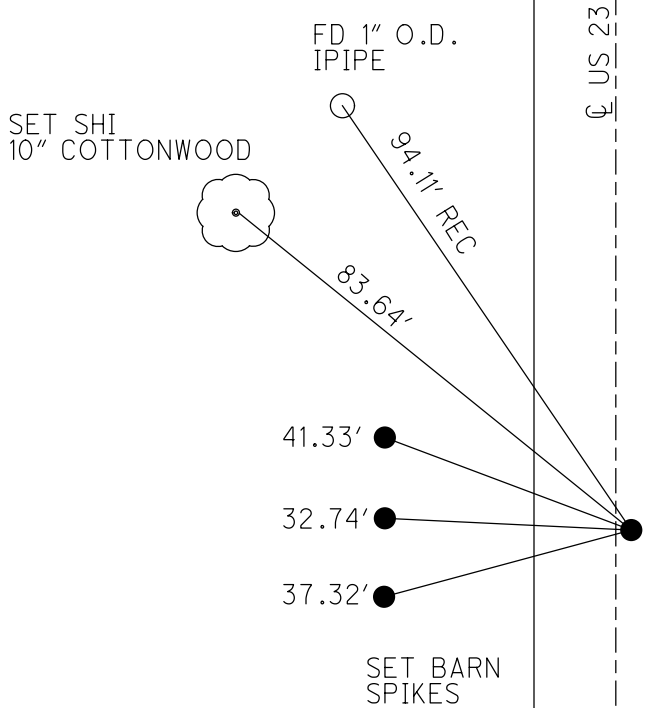
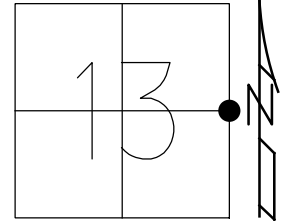
STATION: 502+54.48

HORZ.DATUM: NAD83(2011)

GEOID: NAVD88 2018

GRID: NORTHING: 598080.983

EASTING: 1716198.387



WOOD LPD:  
 N: 420764.956  
 E: 227696.304

RECORD: P.O.T.  
 $\Delta = 0^{\circ}-00'$  LT  
 STA 489+15.25  
 STA 502+56.32  
 SET P.K./WASHER  
 4-27-92, BVD  
 FD P.K./WASHER  
 5/9/00  
 FD P.K./WASHER  
 REF 30  
 3/24/20, JFO  
 SET MAG/WASHER  
 9/26/22, DSA

O.D.O.T. DISTRICT 2 SURVEY OFFICE (USE ONLY)

PERSONNEL

REFERENCE NO. 30

SHEET 38 OF 46

NOTES RHOADES DATE 4/20/22

H.C. O'DONNELL WEATHER SUNNY

R.C. KETNER TEMP. 50°

AUBLE

DWG BY RHOADES PID 102922

ROUTE US 23

COUNTY WOOD

TOWNSHIP MONTGOMERY

SECTION 13

T 4 N R 12 E

TYPE MONUMENT P.K./WASHER

ON SURFACE - ~~BELOW~~ ON

OFFSET CL PAVEMENT 2' ~~LT~~ : RT

13.6 TO LT EDGE PAVEMENT

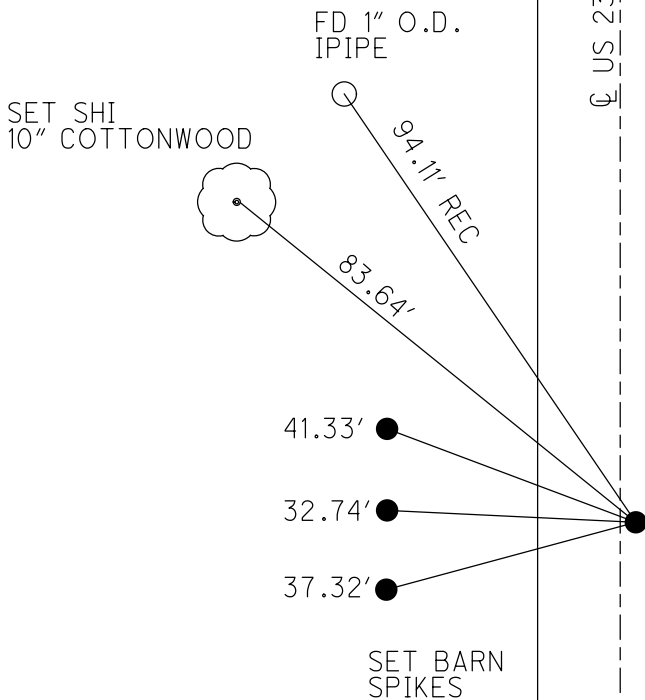
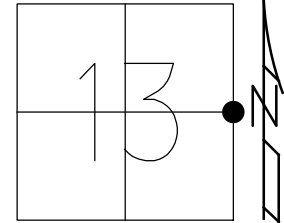
STATION: 502+54.48

HORZ.DATUM: NAD83(2011)

GEOID: NAVD88 2018

GRID: NORTHING: 598080.983

EASTING: 1716198.387



RECORD: P.O.T.  
 $\Delta = 0^{\circ}-00'$  LT  
 STA 489+15.25  
 STA 502+56.32  
 SET P.K./WASHER  
 4-27-92, BVD  
 FD P.K./WASHER  
 5/9/00  
 FD P.K./WASHER  
 REF30  
 3/24/20, JFO  
 SET MAG/WASHER  
 9/26/22, DSA

O.D.O.T. DISTRICT 2 SURVEY OFFICE (USE ONLY)

PERSONNEL

REFERENCE NO. 30

SHEET 31 OF 37

NOTES BARNHEISEL

DATE 8/9/91

ROUTE US 23

H.C. VAN DUSEN

WEATHER CLOUDY

COUNTY WOOD

R.C. \_\_\_\_\_

TEMP. 70°

TOWNSHIP MONTGOMERY

DWG BY AUBLE

PID 102922

SECTION 13

T 4 N R 12 E

TYPE MONUMENT P.K./WASHER

ON SURFACE - ~~BELOW~~ ON

OFFSET  $\odot$  PAVEMENT 2' ~~LT~~ : RT

13.6 TO LT EDGE PAVEMENT

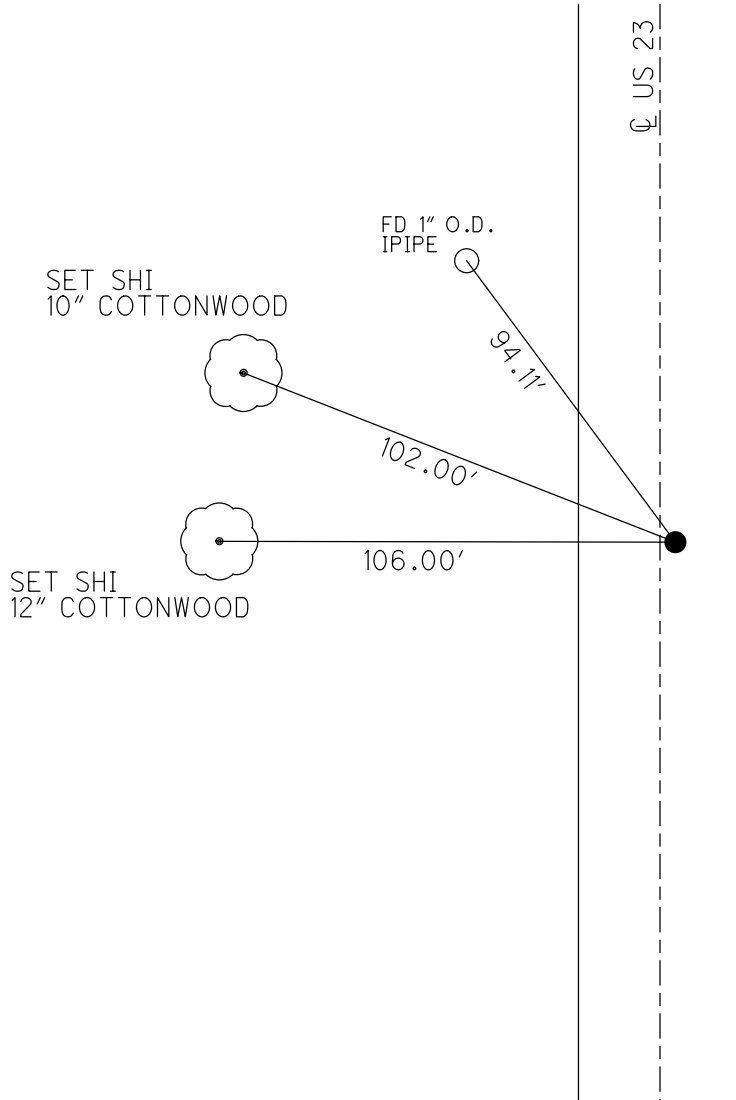
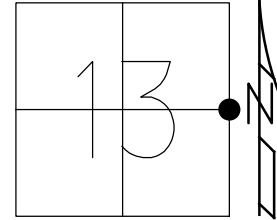
STATION: 450+68

HORZ.DATUM: NAD83(2011)

GEOID: NAVD88 2018

GRID: NORTHING: 598080.983

EASTING: 1716198.387



RECORD: P.O.T.  
 $\Delta = 0^{\circ}-00'$  LT  
 STA 489+15.25  
 STA 502+56.32  
 SET P.K./WASHER  
 4-27-92, BVD  
 FD P.K./WASHER  
 5/9/00  
 FD P.K./WASHER  
 REF30  
 3/24/20, JFO

# O.D.O.T. DISTRICT 2 SURVEY OFFICE

PERSONNEL \_\_\_\_\_

REFERENCE NO. 30

SHEET 18 OF 23

NOTES BARNHISEL

H.C. VAN DUSEN

R.C. \_\_\_\_\_

DATE 8-9-91

WEATHER cloudy

TEMP. +70°

ROUTE U.S. 23

COUNTY WOOD

TOWNSHIP Montgomery

SECTION 13

T 4 N R 12 E

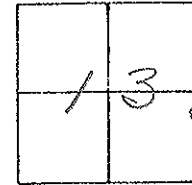
TYPE MONUMENT P.K. & WASHER

ON SURFACE - BELOW yes

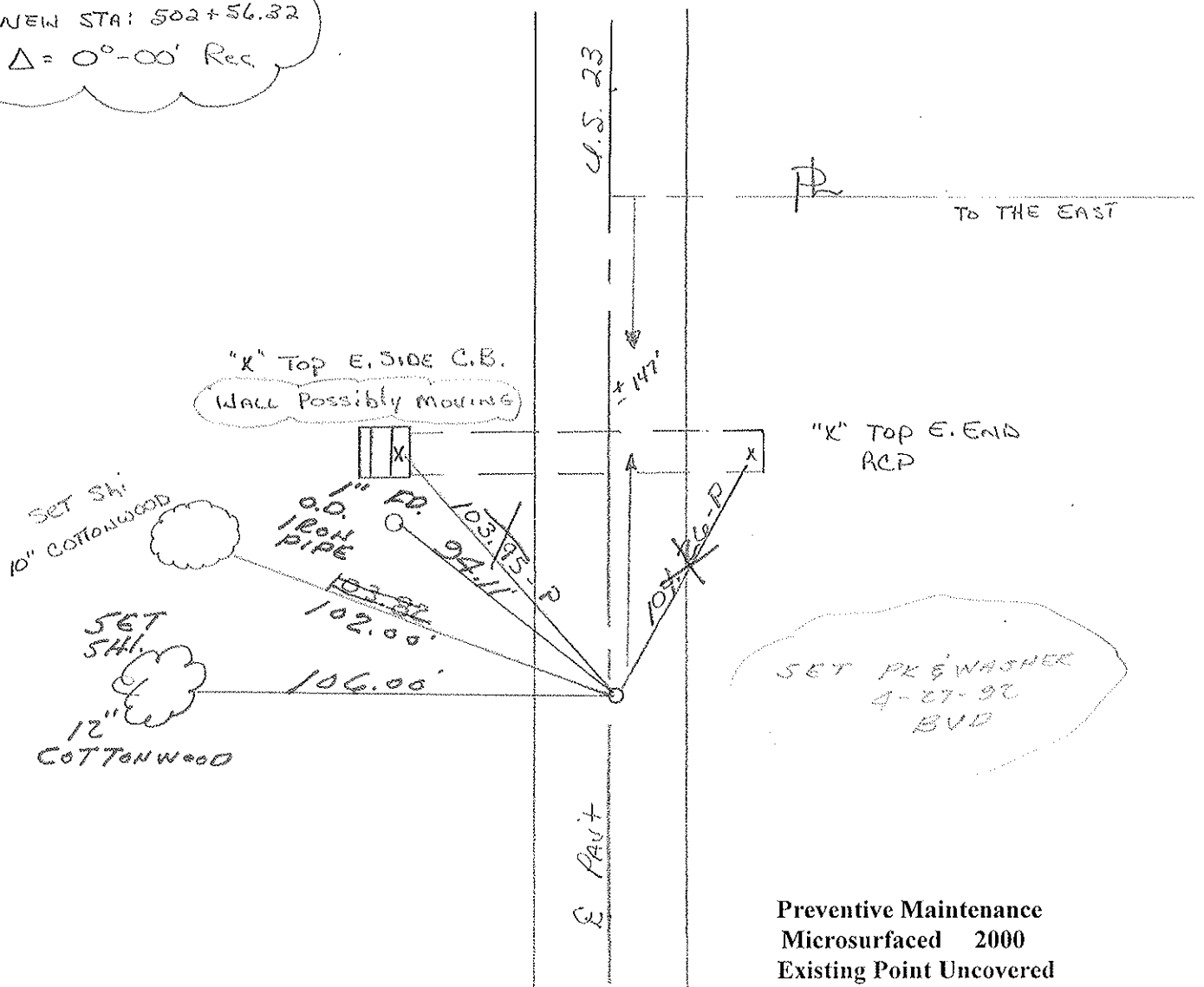
LEFT - C PAV'T. - RIGHT 2.0

13.6 TO LT. EDGE PAVEMENT

S.L.M. 502+83



Records: P.O.T.  
 STA: 489+15.25 =  
 NEW STA: 502+56.32  
 $\Delta = 0^{\circ}-00'$  Rec.



Preventive Maintenance  
 Microsurfaced 2000  
 Existing Point Uncovered  
 Date 5-9-2000

County wood S.R. U.S. 23

Date 7-29-81

Township Montgomery

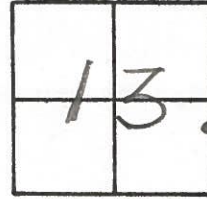
Weather Partly Cloudy

Section 13

Temp. + 75°

T4N, R12E

Personnel Hoffman



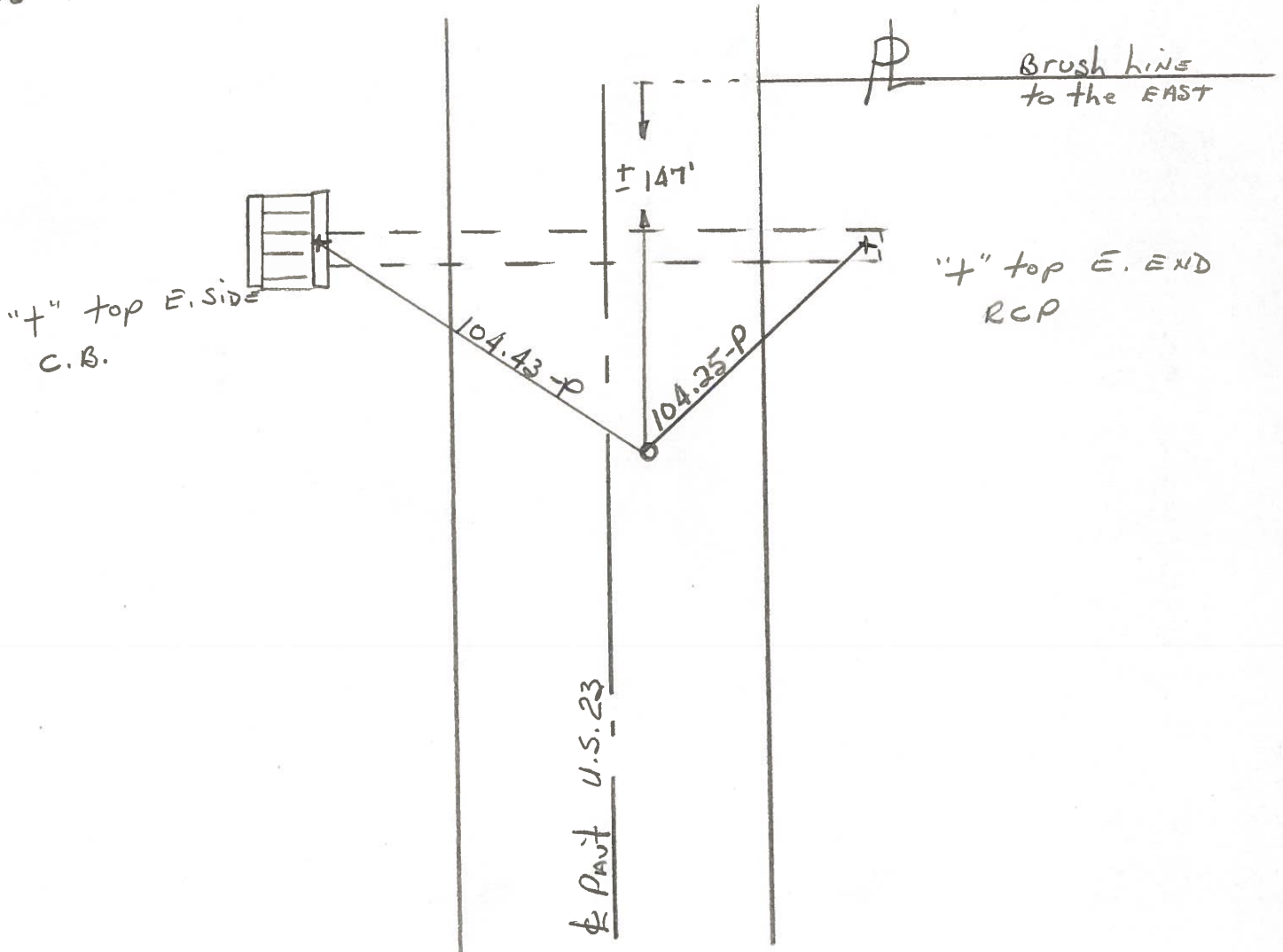
Loehrke

Householder

#30

Fd. P.K. @ surface  
1.9' E. of & PAVT U.S. 23  
13.6' to W. F.P.  
10.3' to E. F.P.

S.L.M = 503+82  
SET P.K/WASHER  
9/27/83  
C.L.



P.O.T. STA. 489+15.25 = New Survey Sta. 502+56.32 - No & ~ Rec.

PERSONNEL	TITLE	PERSONNEL	TITLE
CK. BY			
SILVESTER			
BURNSIDE			
SMITH			

COUNTY: WOOD DATE: OK-7-16-70  
 S. R. U.S. #23 WEATHER \_\_\_\_\_  
 SEC. \_\_\_\_\_ TEMP. \_\_\_\_\_

DESCRIPTION CONTROL TIES LEFT CENTER LINE RIGHT JOB NO. \_\_\_\_\_

<p>STA. 516+55.25                      NEW SURVEY STA. =                      529+96.0  <math>\Delta = 0^\circ - 11' RT.</math>                      S. E. COR. SEC. 12                      MONTGOMERY TWP.                      R. R. SPK. OVER STONE                      SET P.K.                      #385</p>	<p>#32</p>	<p>✓</p>			<p>SHINER P. POLE W.N.W. 89.80'                      CONC. MON. E.S.E. 76.92'                      "X" TOP 7' CONC. PIPE S.W. 85.08'                      S.E. COR. HO. FDN. N.W. 83.75'</p>
<p>FD. P.K. NAIL 59.58'                      SOUTH OF S. E. COR. SEC. 12                      MONTGOMERY TWP.                      #384-A</p>	<p>#31</p>	<p>✓</p>			<p>CONC. MONUMENT N.E. 87.01'                      CONC. MONUMENT E.S.E. 73.83'                      "X" TOP 7' CONC. PIPE W.N.W. 68.62'</p>
<p>STA. 489+15.25                      NEW SURVEY STA. =                      502+56.32  <math>\Delta = 0^\circ - 00'</math>                      R. R. SPK. ON LINE                      SET P.K.                      #384</p>	<p>#30</p>	<p>✓</p>			<p>WELL CASING S.W. 53.40'                      TACKED HUB W. 39.87'                      TACKED HUB N.W. 51.05'                      "X" S. SIDE C.B. N.N.W. 103.33'                      "X" E. END CONC. PIPE E.N.E. 104.40'</p>

PERSONNEL	TITLE	PERSONNEL	TITLE	COUNTY <u>Wood</u>	DATE <u>ok 12-10-57</u>
				S. R. <u>#199</u>	WEATHER
				SEC.	TEMP.

DESCRIPTION	LEFT	CENTER LINE	RIGHT	JOB NO.
Sta. 410+53.05 New survey = 423+93.93 $\Delta = 0^\circ - 17' Lt.$ S.E. cor. sec. 24 Montgomery R.R. spt. over stone - P.K. nail			N.E. cor. conc. walk S.W. 67.6 R/W mon. N.W. 36.4 R/W mon. N.E. 84.3 R/W mon. E. 29.80 S. end of corr. iron pipe S.W. 24.95 Shiner in P.P. E. 63.8 (Not plumb) X-in S. end conc. pipe N.E. 75.7	
	<b>26</b>	<b>#381</b>		
Sta. 437+01.60 New Survey = 450+42.87 $\Delta = 0^\circ - 01' Lt.$ E. 1/4 post Sec. 24 R.R. spt. - P.K. nail			R/W mon. W. 29.91 R/W mon. E. 29.62 R.R. spt. in T.P. S.E. 57.50 R.R. spt. in 15' gsh S.W. 63.0 Shiner in P.P. W. 38.50 Shiner in P.P. N.E. 62.70 Painted X-on face iron corner fence post S.W. 119.40	
	<b>28</b>	<b>#382</b>		
Sta. 463+50.00 New Survey = 476+91.17 $\Delta = 0^\circ - 00'$ S.E. cor. sec. 13 R.R. spt. over stone (Ties gone)			R.R. spt. in 36" Elm. N.W. 103.4 X-in N.W. Cor. br. curb S.E. 18.10 R/W mon. S.E. 39.80 R/W mon. S.W. 41.75 N.E. cor. br. curb S.W. 33.30	
	<b>29</b>	<b>#383</b>		
Sta. 489+15.25 New survey = 502+56.32 $\Delta = 0^\circ - 00'$ R.R. spike on line			Shiner in 18" apple N.W. 60.10 R/W mon. W. 30.40 Well casing S.W. 53.40 Shi. at 54.0 N.E. from well casing	
	<b>30</b>	<b>#384</b>		