

O.D.O.T. DISTRICT 2 SURVEY OFFICE (USE ONLY)

PERSONNEL _____ REFERENCE NO. 31 SHEET 39 OF 46
 NOTES RHOADES DATE 4/20/22 ROUTE US 23
 H.C. O'DONNELL WEATHER SUNNY COUNTY WOOD
 R.C. KETNER TEMP. 50° TOWNSHIP MONTGOMERY
AUBLE SECTION 12
 DWG BY RHOADES PID R/W T 4 N R 12 E

TYPE MONUMENT R.R.SPIKE

~~ON SURFACE~~ - BELOW 4"

OFFSET \odot PAVEMENT 1.5' ~~LT~~ : RT

13.0' TO LT EDGE PAVEMENT

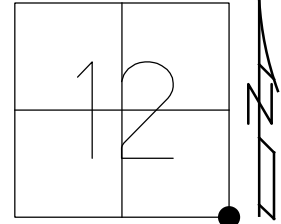
STATION: 529+33.72

HORZ.DATUM: NAD83(2011)

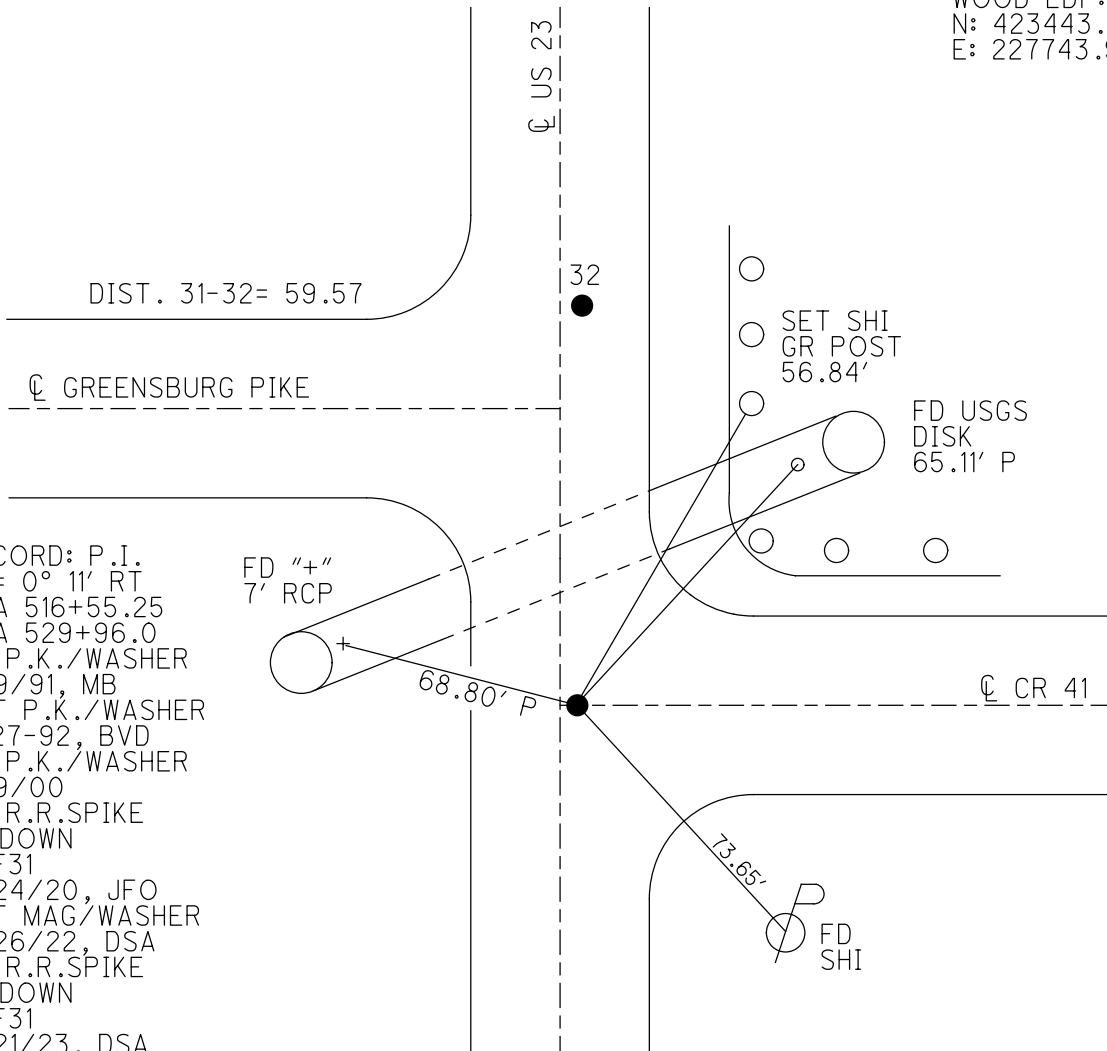
GEOID: NAVD88 2018

GRID: NORTHING: 600758.824

EASTING: 1716281.404



WOOD LDP:
 N: 423443.878
 E: 227743.975



RECORD: P.I.
 $\Delta = 0^\circ 11' RT$
 STA 516+55.25
 STA 529+96.0
 FD P.K./WASHER
 8/9/91, MB
 SET P.K./WASHER
 4-27-92, BVD
 FD P.K./WASHER
 5/9/00
 FD R.R.SPIKE
 4" DOWN
 REF31
 3/24/20, JFO
 SET MAG/WASHER
 9/26/22, DSA
 FD R.R.SPIKE
 4" DOWN
 REF31
 6/21/23, DSA

O.D.O.T. DISTRICT 2 SURVEY OFFICE (USE ONLY)

PERSONNEL _____ REFERENCE NO. 31 SHEET 39 OF 46
 NOTES RHOADES DATE 4/20/22 ROUTE US 23
 H.C. O'DONNELL WEATHER SUNNY COUNTY WOOD
 R.C. KETNER TEMP. 50° TOWNSHIP MONTGOMERY
AUBLE SECTION 12
 DWG BY RHOADES PID 102922 T 4 N R 12 E

TYPE MONUMENT R.R.SPIKE

~~ON SURFACE~~ - BELOW 4"

OFFSET \odot PAVEMENT 1.5' ~~LT~~ : RT

13.0' TO LT EDGE PAVEMENT

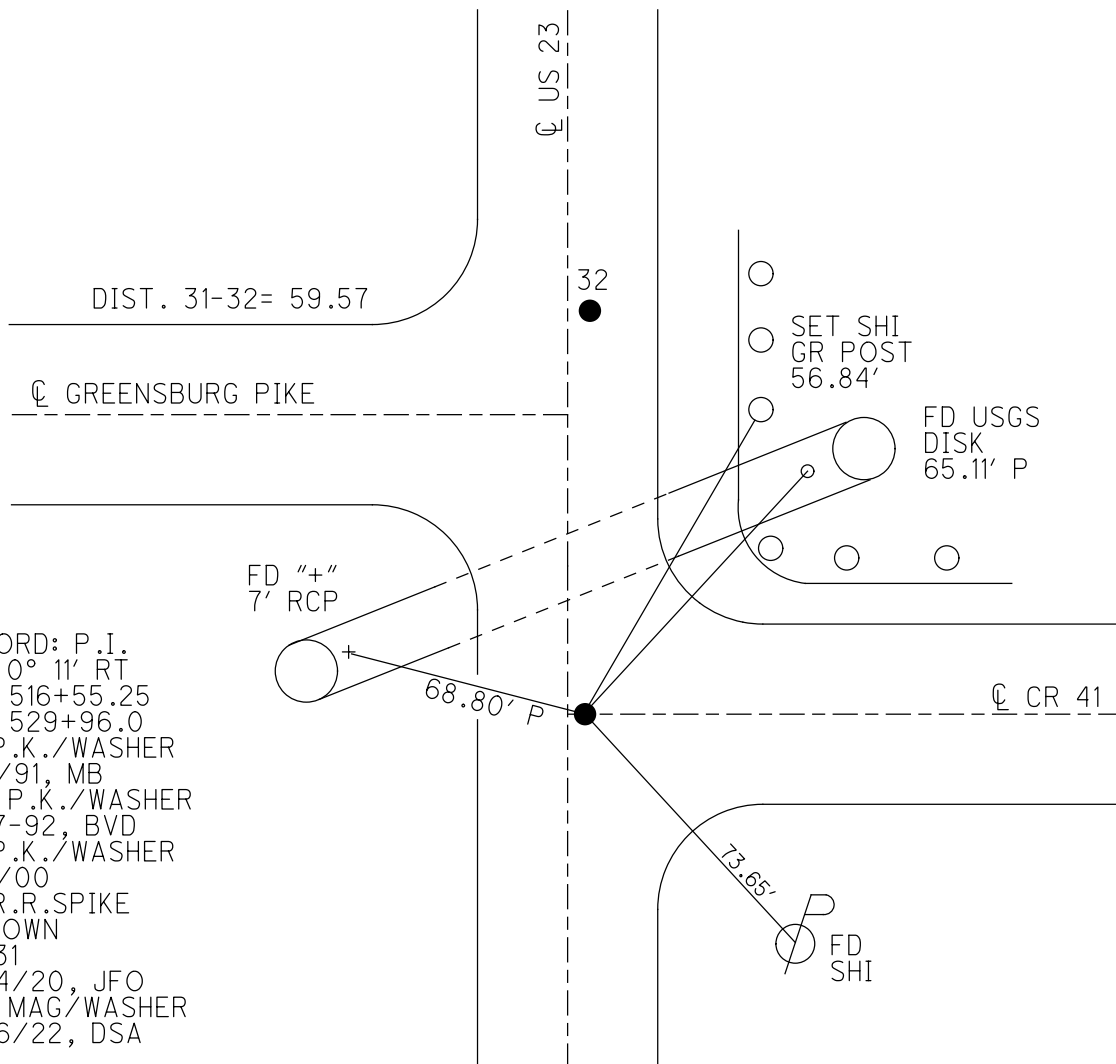
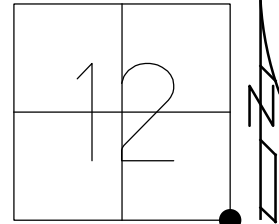
STATION: 529+33.72

HORIZ.DATUM: NAD83(2011)

GEOID: NAVD88 2018

GRID: NORTHING: 600758.824

EASTING: 1716281.404

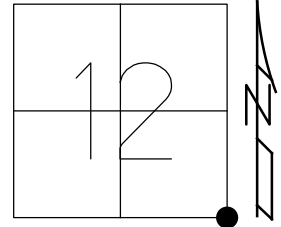


RECORD: P.I.
 $\Delta = 0^\circ 11' RT$
 STA 516+55.25
 STA 529+96.0
 FD P.K./WASHER
 8/9/91, MB
 SET P.K./WASHER
 4-27-92, BVD
 FD P.K./WASHER
 5/9/00
 FD R.R.SPIKE
 4" DOWN
 REF31
 3/24/20, JFO
 SET MAG/WASHER
 9/26/22, DSA

O.D.O.T. DISTRICT 2 SURVEY OFFICE (USE ONLY)

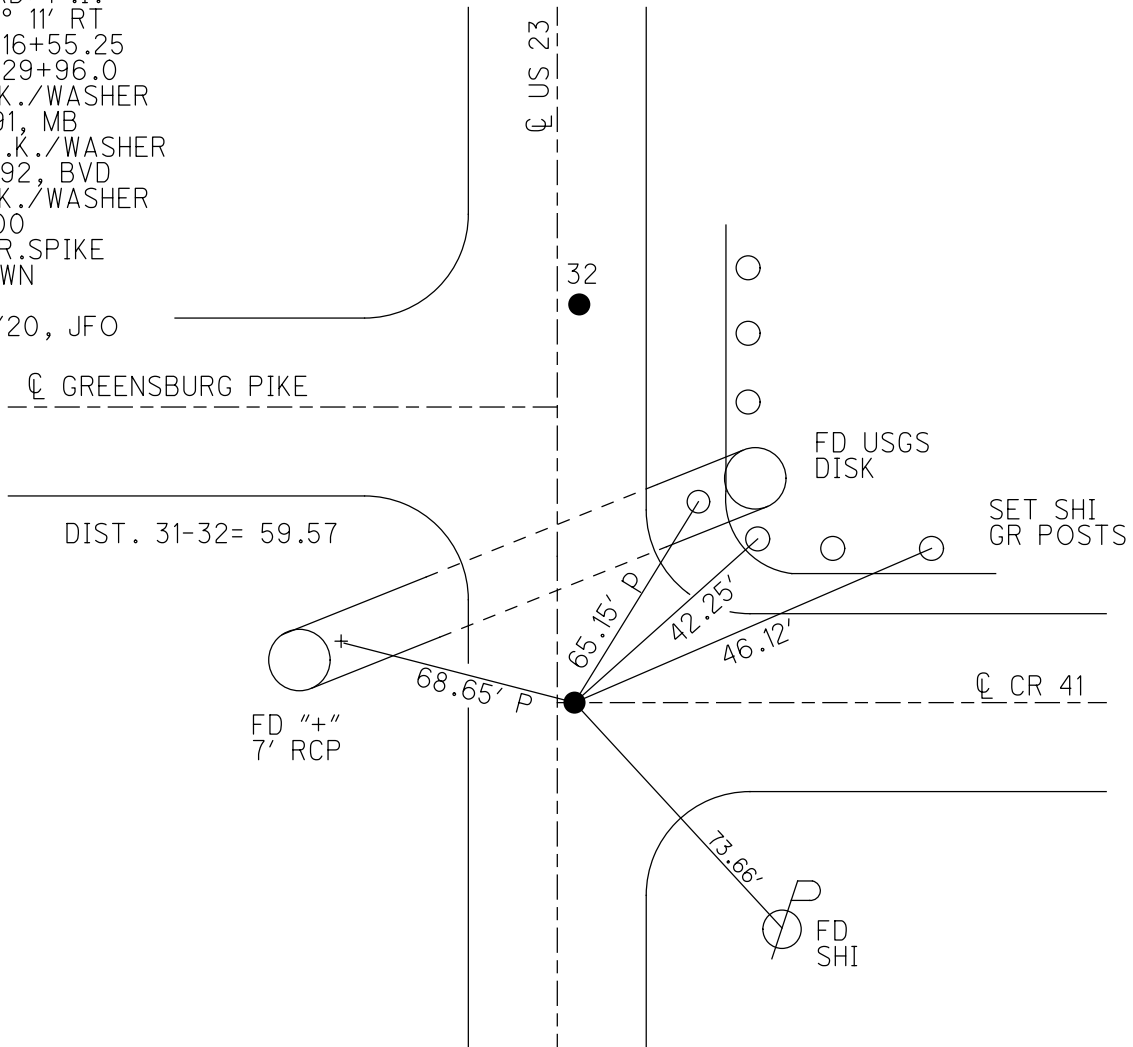
PERSONNEL _____ REFERENCE NO. 31 SHEET 32 OF 37
 NOTES BARNHISEL DATE 8/9/91 ROUTE US 23
 H.C. VAN DUSEN WEATHER CLOUDY COUNTY WOOD
 R.C. _____ TEMP. 70° TOWNSHIP MONTGOMERY
 DWG BY AUBLE PID 102922 SECTION 12
 T 4 N R 12 E

TYPE MONUMENT P.K./WASHER
 ON SURFACE - ~~BELOW~~ ON
 OFFSET C PAVEMENT 1.5' ~~LT~~ : RT
13.0' TO LT EDGE PAVEMENT
 STATION: 529+62



HORZ.DATUM: NAD83(2011) GEOID: NAVD88 2018
 GRID: NORTHING: 600758.824 EASTING: 1716281.404

RECORD: P.I.
 $\Delta = 0^\circ 11' \text{ RT}$
 STA 516+55.25
 STA 529+96.0
 FD P.K./WASHER
 8/9/91, MB
 SET P.K./WASHER
 4-27-92, BVD
 FD P.K./WASHER
 5/9/00
 FD R.R.SPIKE
 4" DOWN
 REF31
 3/24/20, JFO



O.D.O.T. DISTRICT 2 SURVEY OFFICE

PERSONNEL _____

REFERENCE NO. 31 & 32 SHEET 19 OF 23

NOTES BARNHISEL

H.C. VAN DUSEN

R.C. _____

DATE 8-9-91

WEATHER cloudy

TEMP. +70°

ROUTE U.S. 23

COUNTY WOOD

TOWNSHIP Montgomery

SECTION 12

T 4 N R 12 E

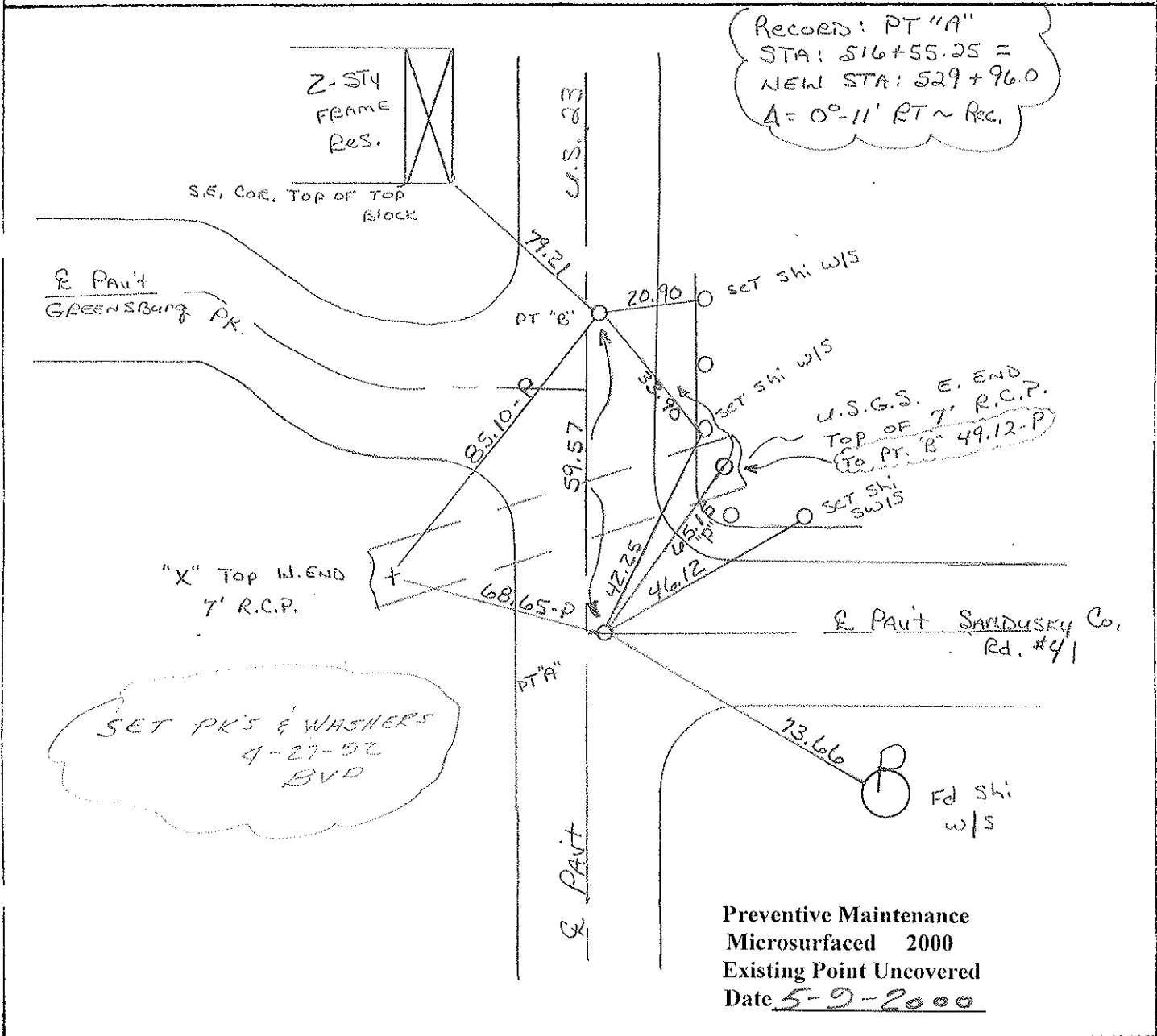
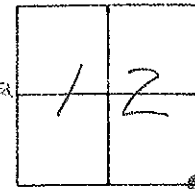
TYPE MONUMENT P.K.'s & WASHERS

ON SURFACE - BELOW YES "BOTH"

LEFT - 0 PAV'T. - RIGHT PT "A" 13.0 TO LT edge

"A" 1.5
"B" 1.7 TO RT EDGE PAVEMENT

S.L.M. 529+62



County Wood S.R. U.S. 23

Date 7-29-81

Township Montgomery

Weather Partly Cloudy

Section 12

Temp. +75°

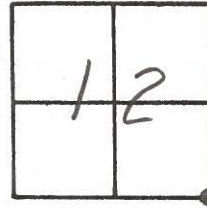
T4N, R12E

Personnel Hoffman

Lochrke

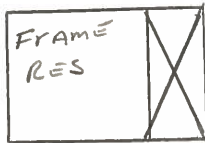
Householder

#31-32



Pt. "A" Fd. P.K. @ SURFACE, 1.3' E. of & PART U.S. 23 & 13.7' to W. EP. S.L.M. 530+66

Pt. "B" Fd. P.K. @ SURFACE, 1.7' E. of & PART U.S. 23 & 10.3' to E. EP.



S.E. COR. TOP of top block
S.E. COR. POECH 79.21

SET P.K./WASHER
@ BOTH POINTS
9/27/03
C.L.

GREENSBURG PIKE

Shiner w/s N & S END Guard Rail Posts

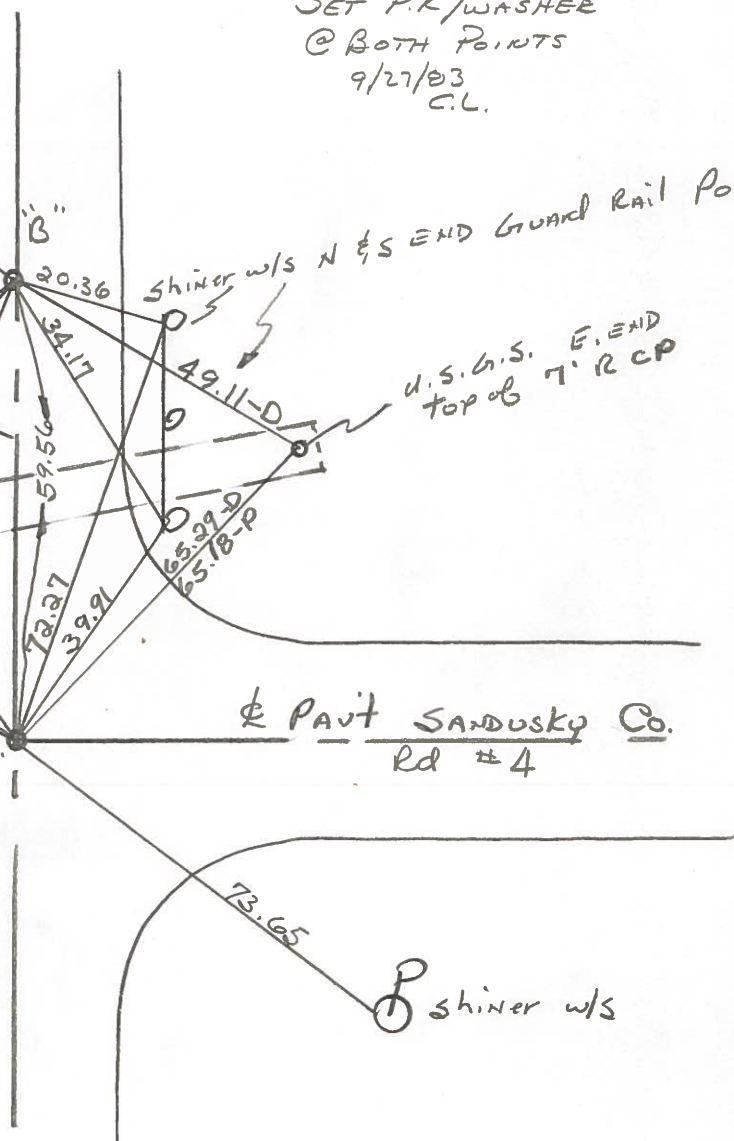
U.S. G.S. E. END
TOP of 7' RCP

"+" top W. END
7' RCP

Shiner E/S N & S END
Guard Rail Posts

& PART SANDUSKY CO.
Rd #4

"A"



Pt. "A"
STA 516+55.25 = New Survey STA. 529+96.0 - Δ = 0°-11' Rt. ~ Rec.

PERSONNEL	TITLE	PERSONNEL	TITLE
<u>CK. BY</u>			
<u>SILVESTER</u>			
<u>BURNSIDE</u>			
<u>SMITH</u>			

COUNTY Wood DATE OK-7-16-70

S. R. W.S.#23 WEATHER _____

SEC. _____ TEMP. _____

DESCRIPTION CONTROL TIES JOB NO. _____

LEFT CENTER LINE RIGHT

<p>STA. 516+55.25 NEW SURVEY STA. = 529+96.0 $\Delta = 0^\circ - 11' RT.$ S. E. COR. SEC. 12 MONTGOMERY TWP. R.R. SPK. OVER STONE SET P.K. #385</p>	<p>#32</p>	<p>✓</p>	<p>✓</p>	<p>SHINER P. POLE W.N.W. 89.8 CONC. MON. E.S.E. 76.92 "X" Top 7' CONC. PIPE S.W. 85.08 S.E. COR. HO. FDN. N.W. 83.75</p>
<p>FD. P.K. NAIL 59.58 SOUTH OF S.E. COR. SEC. 12 MONTGOMERY TWP. #384-A</p>	<p>#31</p>	<p>✓</p>	<p>✓</p>	<p>CONC. MONUMENT N.E. 87.0 CONC. MONUMENT E.S.E. 73.8 "X" Top 7' CONC. PIPE W.N.W. 68.6</p>
<p>STA. 489+15.25 NEW SURVEY STA. = 502+56.32 $\Delta = 0^\circ 00'$ R.R. SPK. ON LINE SET P.K. #384</p>	<p>#30</p>	<p>✓</p>	<p>✓</p>	<p>WELL CASING S.W. 53.40 TACKED HUB W. 39.87 TACKED HUB N.W. 51.05 "X" S. SIDE C.B. N.N.W. 103.33 "X" E. END CONC. PIPE E.N.E. 104.40</p>

PERSONNEL TITLE PERSONNEL TITLE COUNTY Sandusky DATE 1/17/66
 recorded in Stone Record S. R. # 199 WEATHER
 Jan. 1965 SEC. Record # 1 to S.R. # 6 TEMP.

DESCRIPTION Control Point Ties & R/W - Scott Twp JOB NO.
 LEFT CENTER LINE RIGHT

<p>R.R. Spike over stone - stone under 10' Hwy - W. Co. Eng. Dept 1956 Ref Mons. N.E. 67.95 SE. 63.17 SW. 26.83' SE to M.H. Lid 33.22'</p>		<p>Co. Ref # 5 NW cor sec 7 Co Rd # 45 East Bradner Rd West</p>
<p>R.R. Spk over stone by State Hwy Ref Mons SW. 47.84 E 76.93' NW to S.E. Cor House 83.91'</p>	<p>SW cor sec 7 Coke #9</p>	<p>SW cor 12 Co Ref # 8 Gasborg Pike West Stone found by WPA 1939 Point checks with Govt Twp Offset 59.40' Jan. 1965 Ref Mons ESE 73.88' - N.E. 87.00' - N.W. 42.92'</p>
<p>R.R. Spk. over stone by State Hwy Ref Mons. E to 't' cut in east end of No. Bridge Abut - 22.93' SSE to 't' cut in east end of So. " " - 34.05' SW to 't' cut in west end of No. " " 43.67' SSW to 't' cut in west end of So. " " - 56.78'</p>		<p>Merrill Rd. West Co Ref # 13</p>
<p>R.R. Spike over stone by state Hwy Ref Mons NW 55.75 - SW. 47.29'</p>	<p>Co Ref # 14 W 2.19' →</p>	<p>Point set with Govt Twp offset 116.82' Jan 1965 Ref Mons. N.E. 64.10 - N.W. 59.53 ← Co Ref. # 15</p>
<p>R.R. Spike over stone by State Hwy Ref Mons E. - 63.90' N.W. 99.15'</p>	<p>Co Ref # 16 → Co. Rd. # 21 → SW cor 19 99.00'</p>	<p>Point set with Govt Twp offset 99.00' Jan. 1965 Ref. Mons. W to 6" dia steel cor. post - 50.39' S.W. - 73.93' SE. 110.06' Ginton Rd West ← Co. Ref # 17</p>
<p>Stone from old References N.W. to S.E. Cor House 53.33' S.W. to N.E. Cor Porch 52.65' N.W. to S.E. Cor House wing 70.05'</p>	<p>SE to Wising 47.24'</p>	<p>High St. Ref # 20 104.35'</p>

PERSONNEL	TITLE	PERSONNEL	TITLE
		COUNTY <u>Wood</u>	DATE <u>ok 12-20-57</u>
		S. R. <u>#199</u>	WEATHER _____
		SEC. _____	TEMP. _____

DESCRIPTION	LEFT	CENTER LINE	RIGHT	JOB NO.
-------------	------	-------------	-------	---------

Sta. 516+55.25 New Survey = 529+96.0' $\Delta = 0^\circ 11' R.$ P.R. spt. over stone - P.K. nail S.E. cor. sec. 12 Mont.			Shiner in Guard rail post S.W. 48.80 Shiner in Guard rail post N.E. 20.67 Bottom Shi. in 24" Elm N.W. 43.00	
	31	#385		
Sta. 542+75.95 New Survey = 556+17.35 $\Delta = 0^\circ 00'$ E.R. spt. on £		(Ties gone)	End of Pava. wall N.W. 53.53 End of Wing wall N.E. 49.74 Shiner in 32" poplar S.W. 88.19	
	33	#386		
Sta. 565+74.30 New Survey = 579+14.48 P.O.T. E.R. spt. on £ - P.K. nail			X-on top of curb E. 12.24 S.E. Cor. brick post N.W. 80.45 X-in Conc. curb N.E. 25.67 X-in N.W. Cor. Conc. walk S.E. 63.48 Shiner in 18" birch S.W. 43.85 Shiner in T.P. N.W. 46.33 X-in top of curb W. 16.40	
	34	#387		
Sta. 569+93.67 New Survey = 583+34.05 $\Delta = 0^\circ 14' Lt.$ S.E. Cor. Sec #1 Montgomery E.R. spt over stone - P.K. nail			E/W. man N.W. 44.04 E/W. man N.E. 46.91 E/W. man N.E. 45.14 E/W. man S.E. 55.96 Cor. iron fence post S.W. 43.53 Shiner in 4 th guard rail post S.S.W. 54.30 Shiner in T.P. S.W. 43.05 Shiner in 1 st guard rail post W.S.W. 23.95	
	35	#388		