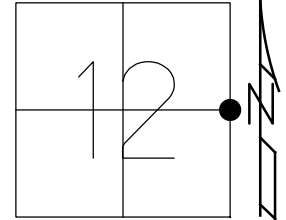


O.D.O.T. DISTRICT 2 SURVEY OFFICE (USE ONLY)

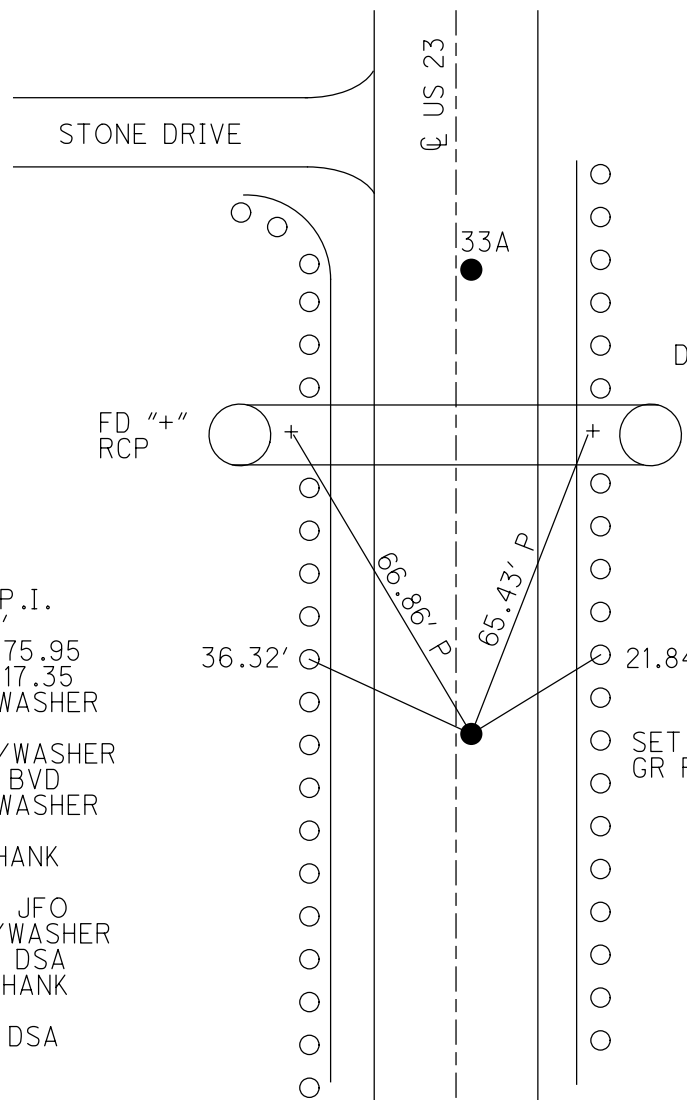
PERSONNEL \_\_\_\_\_ REFERENCE NO. 33 SHEET 41 OF 46  
 NOTES RHOADES DATE 4/20/22 ROUTE US 23  
 H.C. O'DONNELL WEATHER SUNNY COUNTY WOOD  
 R.C. KETNER TEMP. 50° TOWNSHIP MONTGOMERY  
AUBLE SECTION 12  
 DWG BY RHOADES PID R/W T 4 N R 12 E

TYPE MONUMENT MAG SHANK  
 ON SURFACE - ~~BELOW~~ ON  
 OFFSET  $\varnothing$  PAVEMENT 0.7' ~~RT~~ : RT  
10.8' TO RT EDGE PAVEMENT  
 STATION: 556+14.37



HORIZ.DATUM: NAD83(2011) GEOID: NAVD88 2018  
 GRID: NORTHING: 603438.006 EASTING: 1716373.457

BRADNER  
PRESERVE  
PARK



WOOD LDP:  
N: 426124.260  
E: 227800.663

DIST. 33-33A = 100.65'

RECORD: P.I.  
 $\Delta = 0^{\circ}00'$   
 STA. 542+75.95  
 STA. 556+17.35  
 FD P.K./WASHER  
 8/9/91  
 SET P.K./WASHER  
 4-27-92, BVD  
 FD P.K./WASHER  
 5/9/00  
 FD P.K.SHANK  
 REF33  
 3/24/20, JFO  
 SET MAG/WASHER  
 9/26/22, DSA  
 FD MAG SHANK  
 REF33  
 6/21/23, DSA

O.D.O.T. DISTRICT 2 SURVEY OFFICE (USE ONLY)

PERSONNEL

REFERENCE NO. 33

SHEET 41 OF 46

NOTES RHOADES DATE 4/20/22  
 H.C. O'DONNELL WEATHER SUNNY  
 R.C. KETNER TEMP. 50°  
AUBLE

ROUTE US 23  
 COUNTY WOOD  
 TOWNSHIP MONTGOMERY  
 SECTION 12

DWG BY RHOADES PID 102922

T 4 N R 12 E

TYPE MONUMENT P.K.SHANK

ON SURFACE - ~~BELOW~~ ON

OFFSET  $\varnothing$  PAVEMENT 0.7' ~~ET~~ : RT

10.8' TO RT EDGE PAVEMENT

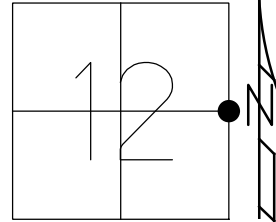
STATION: 556+14.37

HORZ.DATUM: NAD83(2011)

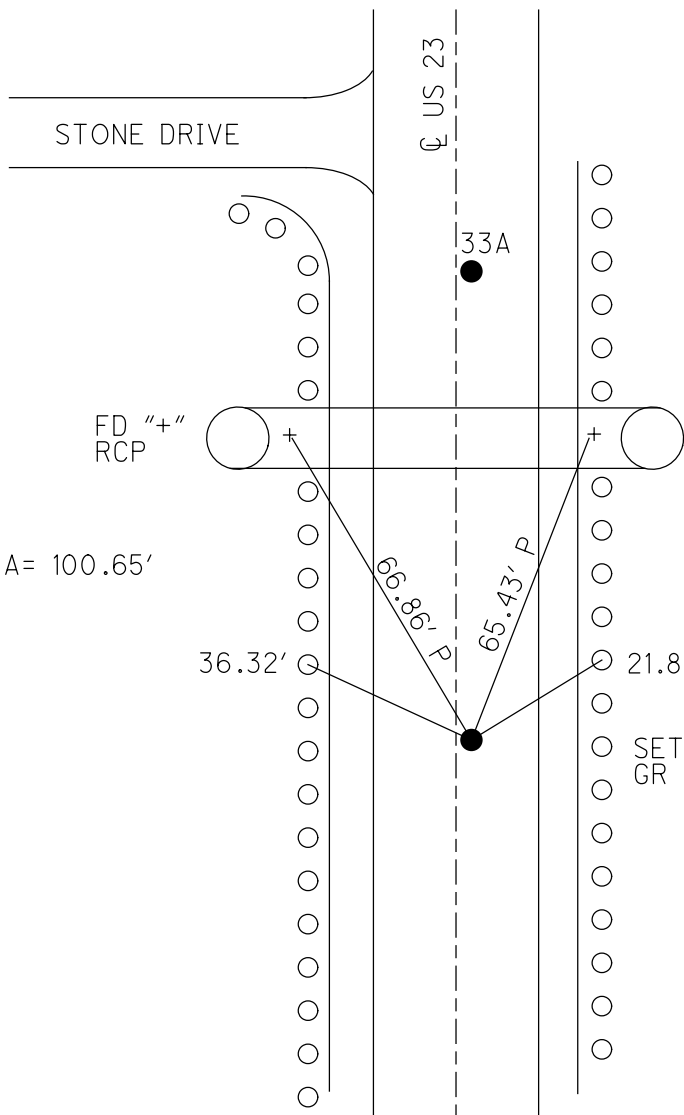
GEOID: NAVD88 2018

GRID: NORTHING: 603438.006

EASTING: 1716373.457



BRADNER  
PRESERVE  
PARK



DIST.33-33A= 100.65'

RECORD: P.I.  
 $\Delta = 0^{\circ}00'$   
 STA.542+75.95  
 STA.556+17.35  
 FD P.K./WASHER  
 8/9/91  
 SET P.K./WASHER  
 4-27-92, BVD  
 FD P.K./WASHER  
 5/9/00  
 FD P.K.SHANK  
 REF33  
 3/24/20, JFO  
 SET MAG/WASHER  
 9/26/22, DSA

O.D.O.T. DISTRICT 2 SURVEY OFFICE (USE ONLY)

PERSONNEL

REFERENCE NO. 33

SHEET 34 OF 37

NOTES BARNHISEL

DATE 8/9/91

ROUTE US 23

H.C. VAN DUSEN

WEATHER CLOUDY

COUNTY WOOD

R.C. \_\_\_\_\_

TEMP. 65°

TOWNSHIP MONTGOMERY

DWG BY AUBLE

PID 102922

SECTION 12

T 4 N R 12 E

TYPE MONUMENT P.K./WASHER

ON SURFACE - ~~BELOW~~ ON

OFFSET Q PAVEMENT 0.7' ~~LT~~ : RT

10.8' TO RT EDGE PAVEMENT

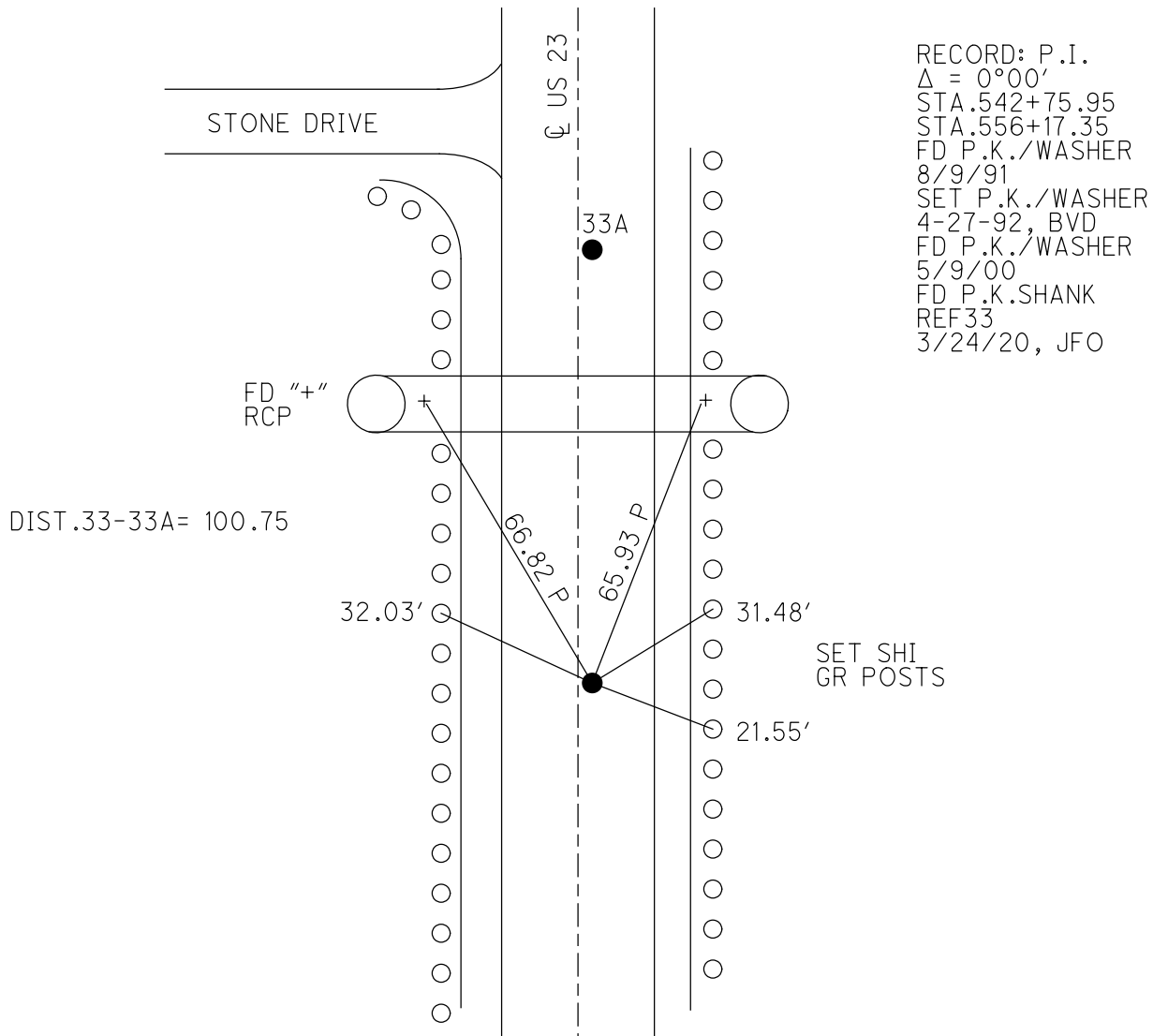
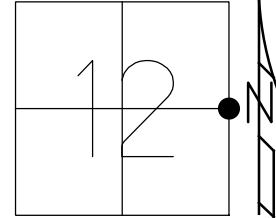
STATION: 556+45

HORZ.DATUM: NAD83(2011)

GEOID: NAVD88 2018

GRID: NORTHING: 603438.006

EASTING: 1716373.457



# O.D.O.T. DISTRICT 2 SURVEY OFFICE

PERSONNEL \_\_\_\_\_

REFERENCE NO. 33

SHEET 20 OF 23

NOTES BARNHISEL

H.C. VAN DUSEN

R.C. \_\_\_\_\_

DATE 8-9-91

WEATHER cloudy

TEMP. +65°

ROUTE U.S. 23

COUNTY WOOD

TOWNSHIP Montgomery

SECTION 12

T 4 N R 12 E

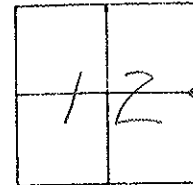
TYPE MONUMENT P.K.'s & WASHERS

ON SURFACE - BELOW yes "Both"

LEFT - &lt;math>\text{C}</math> PAV'T. - RIGHT 0.7 "Both"

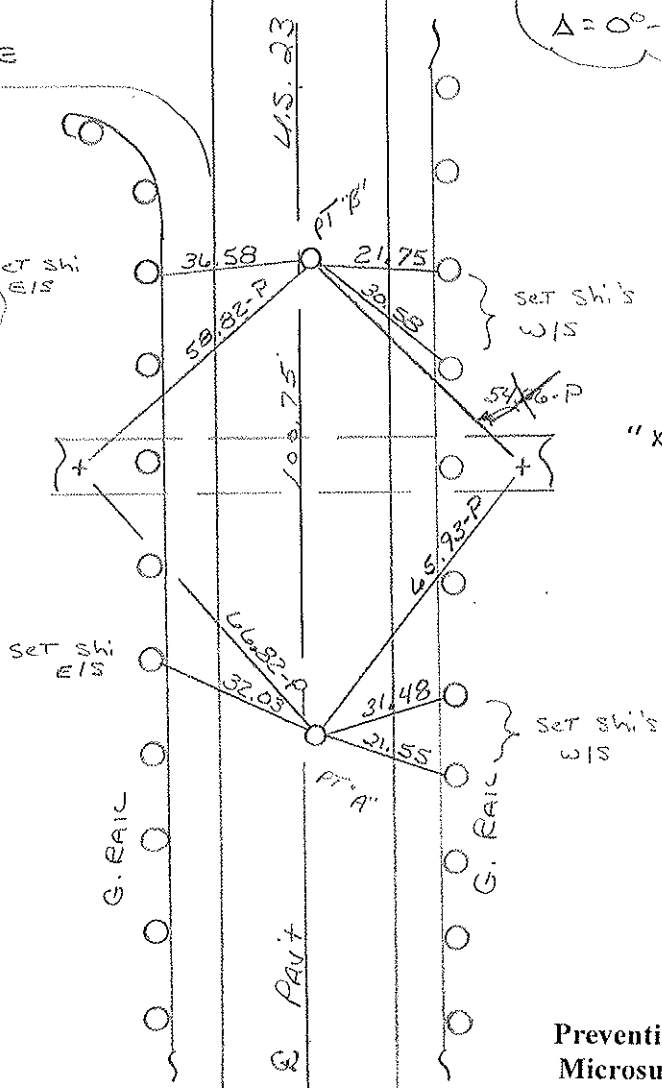
A & B 10.8 TO RT EDGE PAVEMENT

S.L.M. PT "A" 556+45



RECORD: PT "A"  
 STA: 542+75.95 =  
 NEW STA: 556+17.35  
 $\Delta = 0^{\circ}-00' \sim \text{Rec.}$

SET PK & WASHERS  
 4-27-92  
 BVD



Preventive Maintenance  
 Microsurfaced 2000  
 Existing Point Uncovered  
 Date 5-9-2000

County Wood S.R. U.S. 23

Date 7-30-81

Township Montgomery

Weather clear

Section 12

Temp. +70°

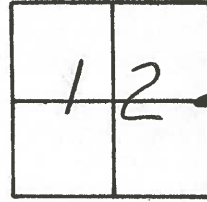
T4N, R12E

Personnel Hoffman

Loehrke

Householder

#33



Pt. "A" Rd. P.K. @ surface, 1.5' E. of & Part U.S. 23 S.L.M. = 557+55

9.9' to E. EP.

13.9' to W. EP.

SET P.K./WASHER

@ BOTH POINTS

9/27/83

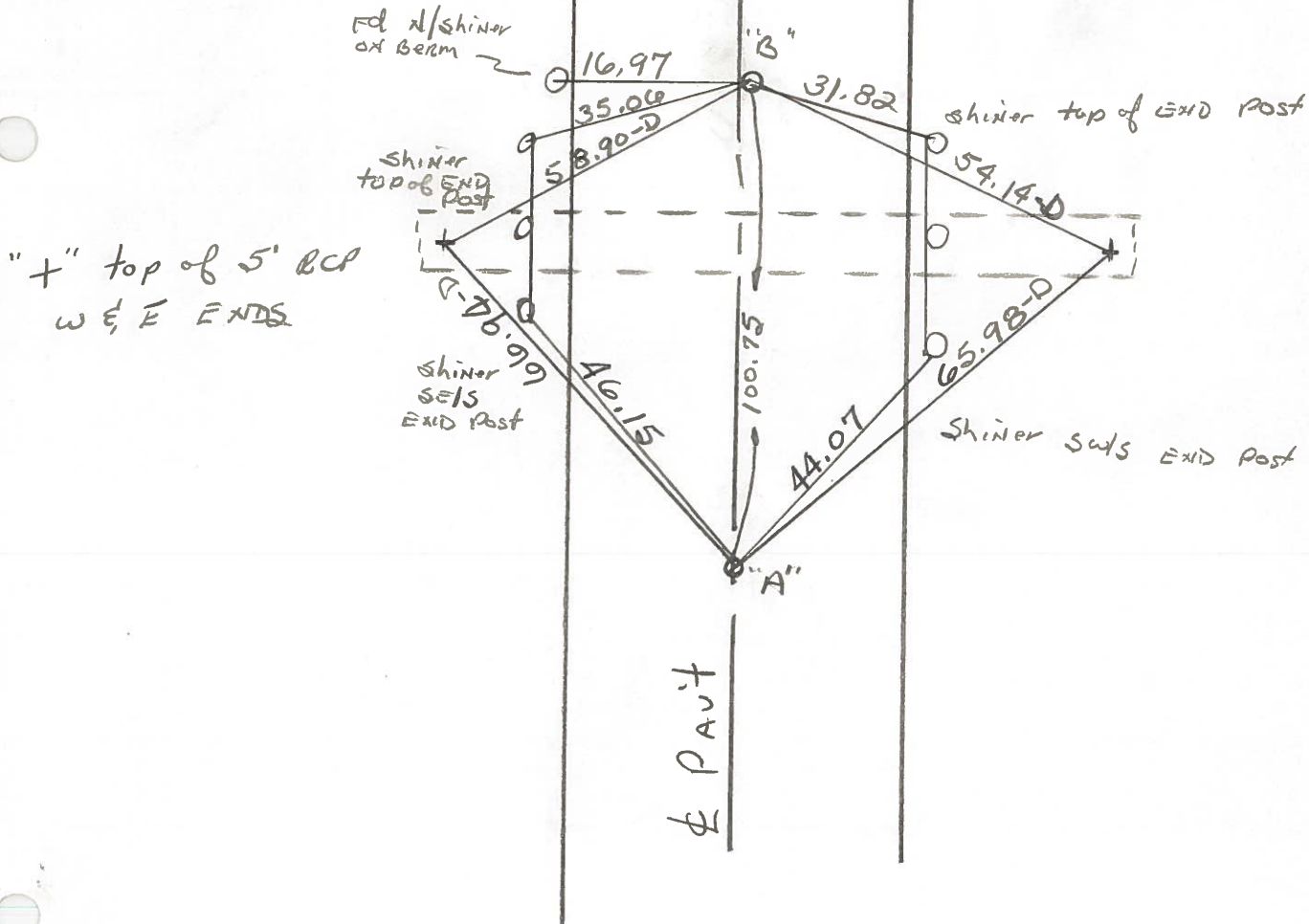
C.L.

Pt. "B" Rd. P.K. @ surface,

1.5' E. of & Part

13.5' to W. EP.

10.3' to E. EP.



Pt. "A" >

STA. 542 + 75.95 = New Survey STA. 556 + 17.35 No & ~ Rec.

PERSONNEL	TITLE	PERSONNEL	TITLE
CK. BY			
SILVESTER			
BURNSIDE			
SMITH			

COUNTY WOOD DATE OK. 7-16-70  
 S. R. U.S. #23 WEATHER \_\_\_\_\_  
 SEC. \_\_\_\_\_ TEMP. \_\_\_\_\_

DESCRIPTION CONTROL TIES LEFT CENTER LINE RIGHT JOB NO. \_\_\_\_\_

STA. 565+74.30 NEW SURVEY STA. = ✓ 579+144B P.O.T. R.R. Spk. ON & SET P.K.  #387	#34	"X" TOP CURB E. 12.20' S.E. COR. BRICK POST N.W. 80.45' "X" CONC. CURB N.E. 25.67' SHINER T. POLE N.W. 46.33' "X" TOP CURB W. 16.40'
STA. 542+75.95 NEW SURVEY STA. = ✓ 556+17.35 Δ = 0°-00' R.R. Spk. ON & SET P.K. SANDUSKY Co.  #386	#33	"X" W. END 5' CONC. PIPE N.W. 66.92' "X" E. END 5' CONC. PIPE N.E. 65.94' SHINER S. GUARD RAIL POST N.W. 46.02 SHINER SOUTH GUARD RAIL POST N.E. 43.98'



PERSONNEL	TITLE	PERSONNEL	TITLE

COUNTY Wood DATE OK 12-20-57

S. R. #199 WEATHER \_\_\_\_\_

SEC. \_\_\_\_\_ TEMP. \_\_\_\_\_

DESCRIPTION LEFT CENTER LINE RIGHT JOB NO.

Sta. 516+55.25 New Survey = 529+96.0' $\Delta = 0^\circ 11' R.$ R.R. spt. over stone - Pk nail S.E. cor. sec. 12 Montg. <b>31 #385</b>		Shiner in Guard rail post S.W. 48.8 Shiner in Guard rail post N.E. 20.6 Bottom shi. in 24" Elm N.W. 43.0	
Sta. 542+75.95 New Survey = 556+17.35 $\Delta = 0^\circ 00'$ R.R. spt. on E. <b>33 #386</b>	(Ties gone)	Siend of Pava. wall N.W. 53.5 Siend of Wing wall N.E. 49.74 Shiner in 32" poplar S.W. 28.19	
Sta. 565+74.30 New Survey = 579+14.48 P.O.T. R.R. spt. on E. - Pk. nail <b>34 #387</b>		X-on top of curb E. 12.24 S.E. cor. brick post N.W. 80.4 X-in Conc. curb N.E. 25.6 X-in N.W. cor. conc. walk S.E. 63.4 Shiner in 18" birch S.W. 43.85 Shiner in T.P. N.W. 46.3 X-in top of curb W. 16.4	
Sta. 569+93.67 New Survey = 583+34.05 $\Delta = 0^\circ 14' L.$ S.E. Cor. Sec #1 Montgomery R.R. spt. over stone - Pk nail. <b>35 #388</b>		R/W. man N.W. 44.0 R/W. man N.E. 46.9 R/W. man N.E. 45.14 R/W. man S.E. 55.1 Cor. iron fence post S.W. 43.5 Shiner in 4 <sup>th</sup> guard rail post S.W. 54.3 Shiner in T.P. S.W. 43.0 Shiner in 1 <sup>st</sup> guard rail post S.W. 23.9	