

O.D.O.T. DISTRICT 2 SURVEY OFFICE (USE ONLY)

PERSONNEL

REFERENCE NO. 33 A

SHEET 42 OF 46

NOTES BARNHISEL

DATE 8/9/91

ROUTE US 23

H.C. VAN DUSEN

WEATHER CLOUDY

COUNTY WOOD

R.C. KETNER

TEMP. 65°

TOWNSHIP MONTGOMERY

AUBLE

SECTION 12

DWG BY AUBLE

PID R/W

T 4 N R 12 E

TYPE MONUMENT P.K./WASHER

~~ON SURFACE~~ - BELOW 3"

OFFSET  $\varnothing$  PAVEMENT 0.7' ~~RT~~ : RT

10.8' TO RT EDGE PAVEMENT

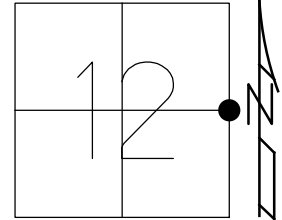
STATION: 557+15.12

HORIZ.DATUM: NAD83(2011)

GEOID: NAVD88 2018

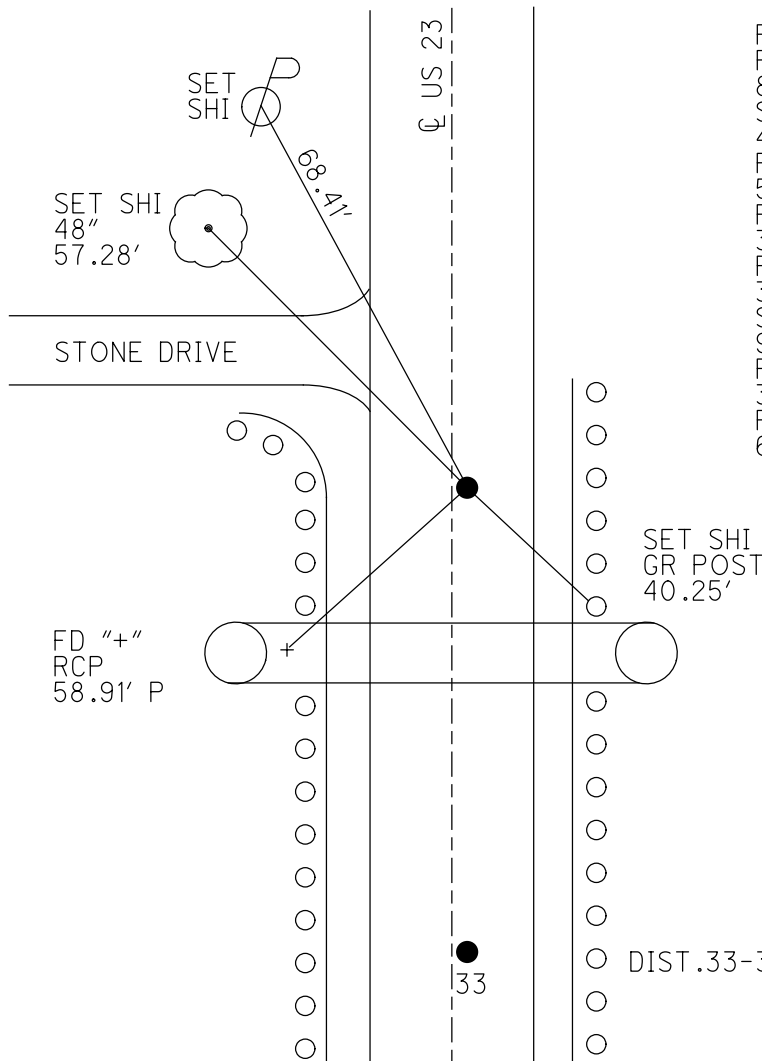
GRID: NORTHING: 603538.649

EASTING: 1716376.846



WOOD LDP:  
N: 426224.947  
E: 227802.724

BRADNER  
PRESERVE  
PARK



RECORD:  
FD P.K./WASHER  
8/9/91, MB  
SET P.K./WASHER  
4-27-92, BVD  
FD P.K./WASHER  
5/9/00  
FD P.K./WASHER  
3 1/2" DOWN  
REFA33  
3/24/20, JFO  
SET MAG/WASHER  
9/26/22, DSA  
FD P.K./WASHER  
3" DOWN  
REFA33  
6/21/23, DSA

DIST.33-33A= 100.65'

33

O.D.O.T. DISTRICT 2 SURVEY OFFICE (USE ONLY)

PERSONNEL

REFERENCE NO. 33 A

SHEET 42 OF 46

NOTES BARNHEISEL

DATE 8/9/91

ROUTE US 23

H.C. VAN DUSEN

WEATHER CLOUDY

COUNTY WOOD

R.C. KETNER

TEMP. 65°

TOWNSHIP MONTGOMERY

AUBLE

SECTION 12

DWG BY AUBLE

PID 102922

T 4 N R 12 E

TYPE MONUMENT P.K./WASHER

ON SURFACE - ~~BELOW~~ ON

OFFSET 0.7' ET : RT

10.8' TO RT EDGE PAVEMENT

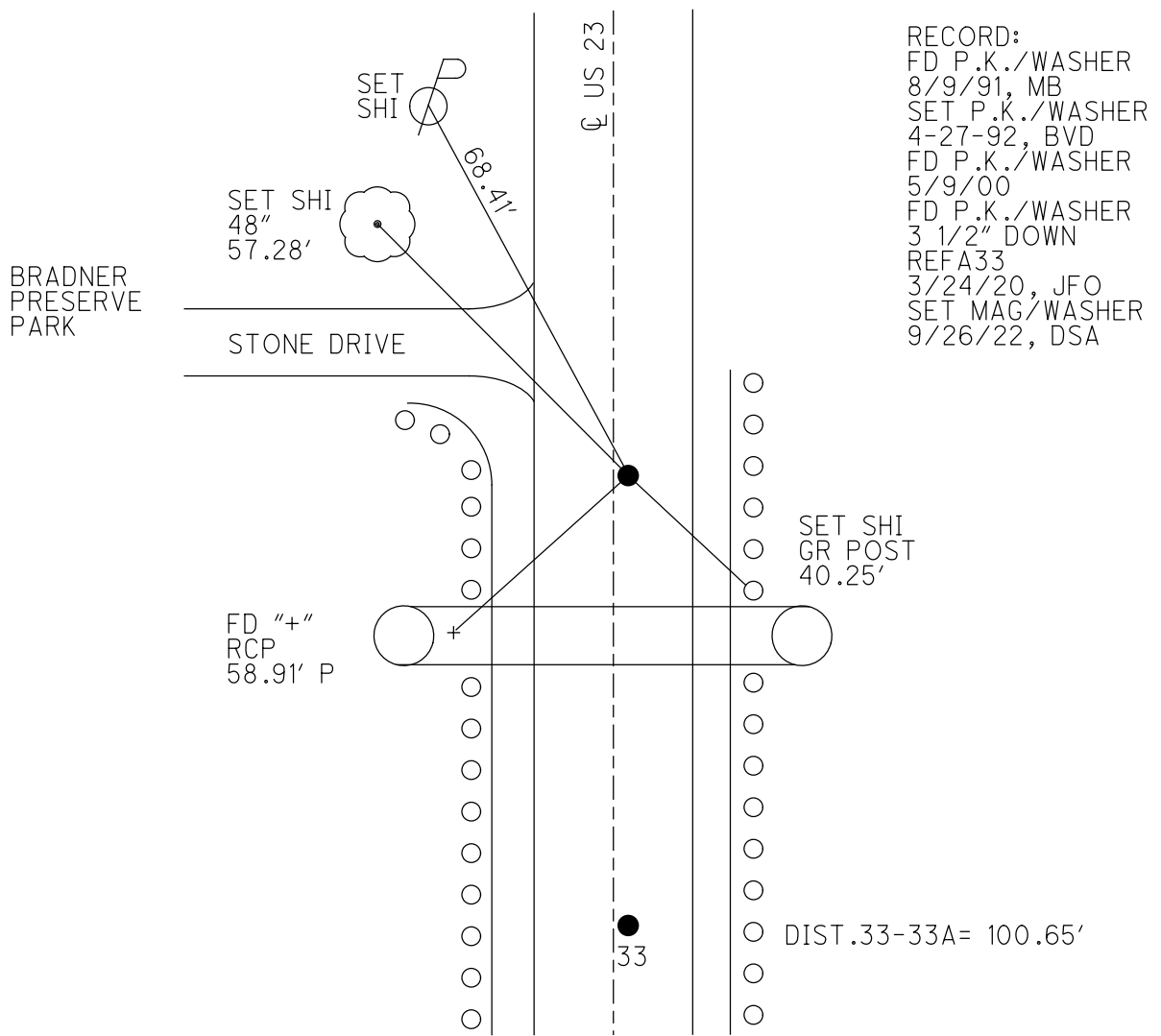
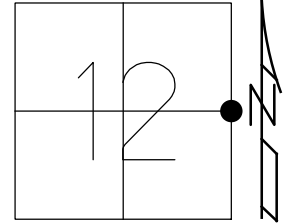
STATION: 557+15.12

HORIZ.DATUM: NAD83(2011)

GEOID: NAVD88 2018

GRID: NORTHING: 603538.649

EASTING: 1716376.846



RECORD:  
 FD P.K./WASHER  
 8/9/91, MB  
 SET P.K./WASHER  
 4-27-92, BVD  
 FD P.K./WASHER  
 5/9/00  
 FD P.K./WASHER  
 3 1/2" DOWN  
 REFA33  
 3/24/20, JFO  
 SET MAG/WASHER  
 9/26/22, DSA

SET SHI  
 GR POST  
 40.25'

DIST.33-33A= 100.65'

33

O.D.O.T. DISTRICT 2 SURVEY OFFICE (USE ONLY)

PERSONNEL

REFERENCE NO. 33A

SHEET 35 OF 37

NOTES BARNHEISEL

DATE 8/9/91

ROUTE US 23

H.C. VAN DUSEN

WEATHER CLOUDY

COUNTY WOOD

R.C. \_\_\_\_\_

TEMP. 65°

TOWNSHIP MONTGOMERY

DWG BY AUBLE

PID 102922

SECTION 12

T 4 N R 12 E

TYPE MONUMENT P.K./WASHER

ON SURFACE - ~~BELOW~~ ON

OFFSET 0.7' ~~LT~~ : RT

10.8' TO RT EDGE PAVEMENT

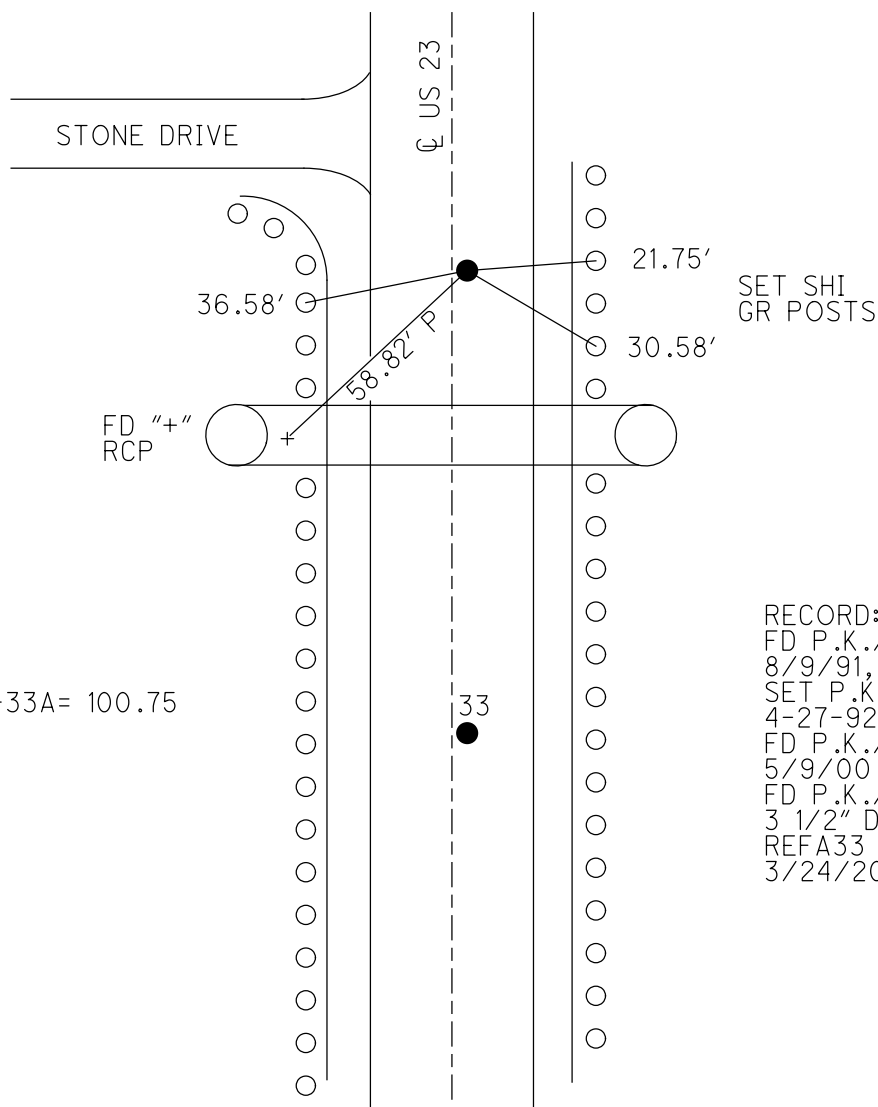
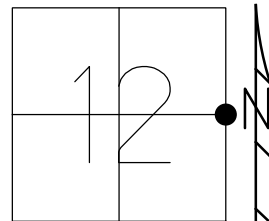
STATION: 556+45

HORIZ.DATUM: NAD83(2011)

GEOID: NAVD88 2018

GRID: NORTHING: 603538.649

EASTING: 1716376.846



RECORD:  
 FD P.K./WASHER  
 8/9/91, MB  
 SET P.K./WASHER  
 4-27-92, BVD  
 FD P.K./WASHER  
 5/9/00  
 FD P.K./WASHER  
 3 1/2" DOWN  
 REFA33  
 3/24/20, JFO

# O.D.O.T. DISTRICT 2 SURVEY OFFICE

PERSONNEL

REFERENCE NO. 33

SHEET 20 OF 23

NOTES BARNHISEL

H.C. VAN DUSEN

R.C. \_\_\_\_\_

DATE 8-9-91

WEATHER cloudy

TEMP. +65°

ROUTE U.S. 23

COUNTY WOOD

TOWNSHIP Montgomery

SECTION 12

T 4 N R 12 E

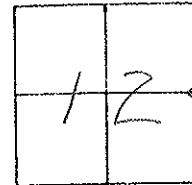
TYPE MONUMENT P.K.'s & WASHERS

ON SURFACE - BELOW yes "Both"

LEFT - &lt;math>\text{C}</math> PAV'T. - RIGHT 0.7 "Both"

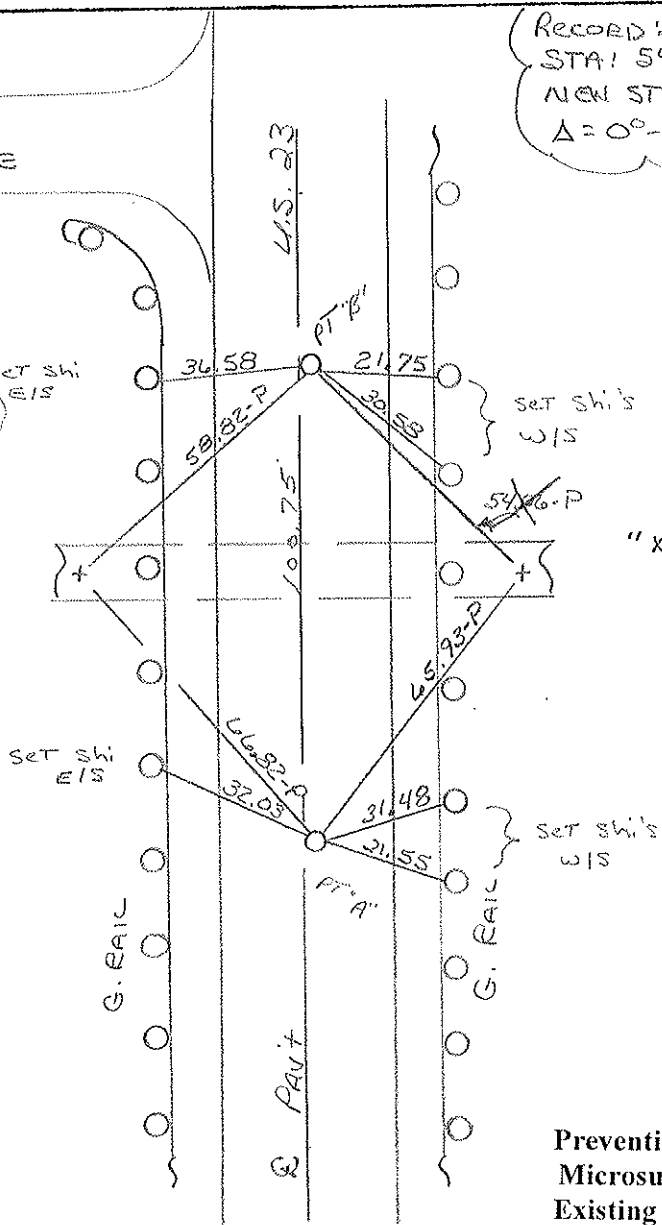
A & B 10.8 TO RT EDGE PAVEMENT

S.L.M. PT "A" 556+45



RECORD: PT "A"  
 STA: 542+75.95 =  
 NEW STA: 556+17.35  
 $\Delta = 0^\circ - 00' \sim \text{Rec.}$

SET PK & WASHERS  
 4-27-92  
 BVD



"X" S TOP OF 5' R.C.P.  
 W & E ENDS

Preventive Maintenance  
 Microsurfaced 2000  
 Existing Point Uncovered  
 Date 5-9-2000

County Wood S.R. U.S. 23

Date 7-30-81

Township Montgomery

Weather clear

Section 12

Temp. +70°

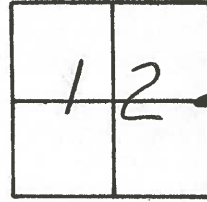
T4N, R12E

Personnel Hoffman

Loehrke

Householder

#33



Pt. "A" Rd. P.K. @ surface, 1.5' E. of & Part U.S. 23 S.L.M. = 557+55

9.9' to E. EP.

13.9' to W. EP.

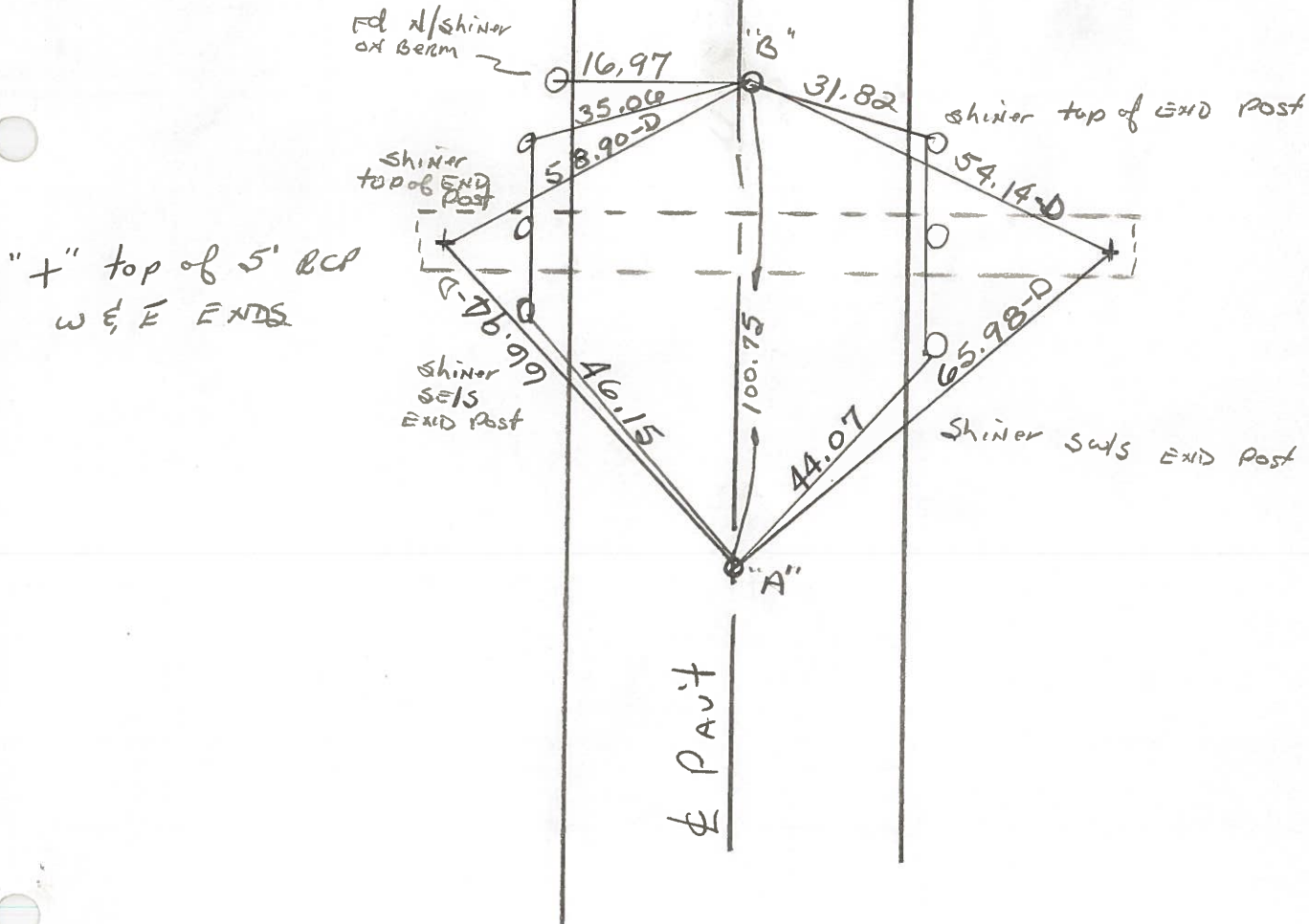
SET P.K./WASHER  
@ BOTH POINTS  
9/27/83  
C.L.

Pt. "B" Rd. P.K. @ surface,

1.5' E. of & Part

13.5' to W. EP.

10.3' to E. EP.



Pt. "A" >

STA. 542+75.95 = New Survey STA. 556+17.35 No & ~ Rec.

PERSONNEL	TITLE	PERSONNEL	TITLE
CK. BY			
SILVESTER			
BURNSIDE			
SMITH			

COUNTY WOOD DATE OK. 7-16-70  
 S. R. U.S. #23 WEATHER \_\_\_\_\_  
 SEC. \_\_\_\_\_ TEMP. \_\_\_\_\_

DESCRIPTION CONTROL TIES LEFT CENTER LINE RIGHT JOB NO. \_\_\_\_\_

STA. 565+74.30 NEW SURVEY STA. = ✓ 579+144B P.O. T. R.R. Spk. ON & SET P.K. #387	#34	"X" TOP CURB E. 12.20' S.E. COR. BRICK POST N.W. 80.45' "X" CONC. CURB N.E. 25.67' SHINER T. POLE N.W. 46.33' "X" TOP CURB W. 16.40'
STA. 542+75.95 NEW SURVEY STA. = ✓ 556+17.35 Δ = 0°-00' R.R. Spk. ON & SET P.K. SANDUSKY Co. #386	#33	"X" W. END 5' CONC. PIPE N.W. 66.92' "X" E. END 5' CONC. PIPE N.E. 65.94' SHINER S. GUARD RAIL POST N.W. 46.02 SHINER SOUTH GUARD RAIL POST N.E. 43.98'



PERSONNEL	TITLE	PERSONNEL	TITLE

COUNTY Wood DATE OK 12-20-57

S. R. #199 WEATHER \_\_\_\_\_

SEC. \_\_\_\_\_ TEMP. \_\_\_\_\_

DESCRIPTION LEFT CENTER LINE RIGHT JOB NO.

Sta. 516+55.25 New Survey = 529+96.0' $\Delta = 0^\circ 11' R.$ R.R. spt. over stone - Pk nail S.E. cor. sec. 12 Mont. <b>31 #385</b>		Shiner in Guard rail post S.W. 48.8 Shiner in Guard rail post N.E. 20.6 Bottom shi. in 24" Elm N.W. 43.0	
Sta. 542+75.95 New Survey = 556+17.35 $\Delta = 0^\circ 00'$ R.R. spt. on E. <b>33 #386</b>	(Ties gone)	End of Pava. wall N.W. 53.5 End of Wing wall N.E. 49.74 Shiner in 32" poplar S.W. 28.19	
Sta. 565+74.30 New Survey = 579+14.48 P.O.T. R.R. spt. on E. - Pk. nail <b>34 #387</b>		X-on top of curb E. 12.24 S.E. cor. brick post N.W. 80.4 X-in Conc. curb N.E. 25.6 X-in N.W. cor. conc. walk S.E. 63.4 Shiner in 18" birch S.W. 43.85 Shiner in T.P. N.W. 46.3 X-in top of curb W. 16.4	
Sta. 569+93.67 New Survey = 583+34.05 $\Delta = 0^\circ 14' L.$ S.E. Cor. Sec #1 Montgomery R.R. spt. over stone - Pk nail. <b>35 #388</b>		R/W. man N.W. 44.0 R/W. man N.E. 46.9 R/W. man N.E. 45.14 R/W. man S.E. 55.1 Cor. iron fence post S.W. 43.5 Shiner in 4 <sup>th</sup> guard rail post S.W. 54.3 Shiner in T.P. S.W. 43.0 Shiner in 1 <sup>st</sup> guard rail post S.W. 23.9	