

O.D.O.T. DISTRICT 2 SURVEY OFFICE (USE ONLY)

PERSONNEL

REFERENCE NO. 34

SHEET 43 OF 46

NOTES RHOADES

DATE 4/20/22

ROUTE US 23

H.C. O'DONNELL

WEATHER SUNNY

COUNTY WOOD

R.C. KETNER

TEMP. 50°

TOWNSHIP MONTGOMERY

AUBLE

SECTION 12

DWG BY RHOADES

PID R/W

T 4 N R 12 E

TYPE MONUMENT MAG NAIL

ON SURFACE - ~~BELOW~~ ON

OFFSET 11.8' TO RT EDGE PAVEMENT

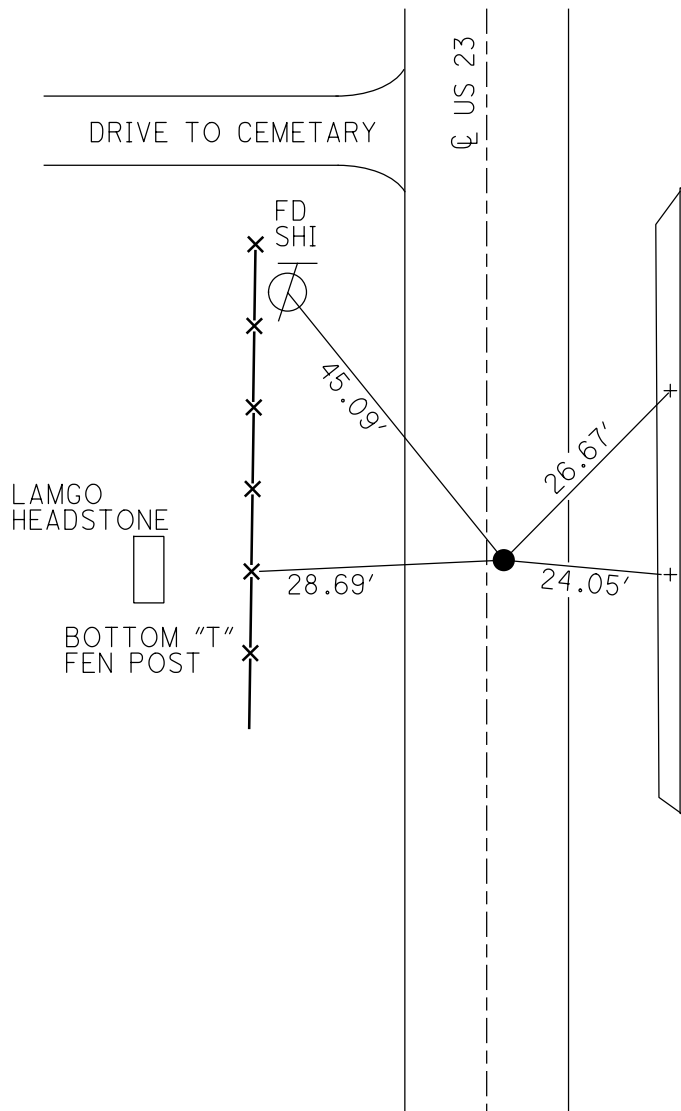
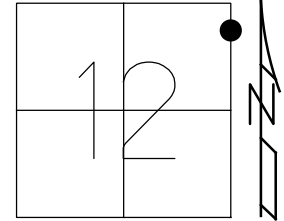
STATION: 579+10.88

HORZ.DATUM: NAD83(2011)

GEOID: NAVD88 2018

GRID: NORTHING: 605733.159

EASTING: 1716452.393



RECORD: POT
 STA: 565+74.30
 STA: 579+14.48
 FD P.K./WASHER
 8/9/91, MB
 SET P.K./WASHER
 4-15-92, BVD
 FD P.K.NAIL
 REF34
 3/24/20, JFO
 SET MAG/WASHER
 9/26/22, DSA
 FD MAG NAIL
 REF34
 6/21/23, DSA

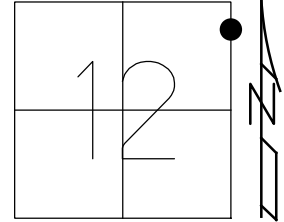
CHISELED "+"s
 1' UP
 METAL RETAINING
 WALL

WOOD LDP:
 N: 428420.439
 E: 227849.303

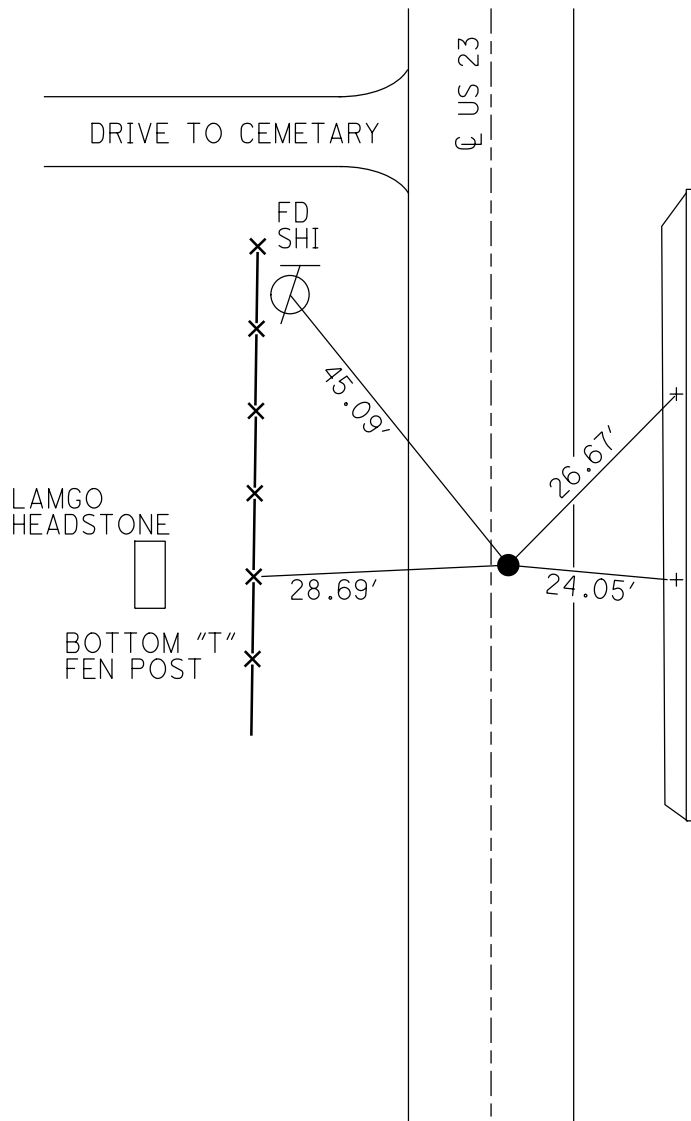
O.D.O.T. DISTRICT 2 SURVEY OFFICE (USE ONLY)

PERSONNEL _____ REFERENCE NO. 34 SHEET 43 OF 46
 NOTES RHOADES DATE 4/20/22 ROUTE US 23
 H.C. O'DONNELL WEATHER SUNNY COUNTY WOOD
 R.C. KETNER TEMP. 50° TOWNSHIP MONTGOMERY
AUBLE
 DWG BY RHOADES PID 102922 SECTION 12
 T 4 N R 12 E

TYPE MONUMENT P.K. SHANK
 ON SURFACE - ~~BELOW~~ ON
 OFFSET 11.8' TO RT EDGE PAVEMENT
 STATION: 579+10.88



HORZ. DATUM: NAD83(2011) GEOID: NAVD88 2018
 GRID: NORTHING: 605733.159 EASTING: 1716452.393



RECORD: POT
 STA: 565+74.30
 STA: 579+14.48
 FD P.K./WASHER
 8/9/91, MB
 SET P.K./WASHER
 4-15-92, BVD
 FD P.K.NAIL
 REF34
 3/24/20, JFO
 SET MAG/WASHER
 9/26/22, DSA

CHISELED "+"s
 1' UP
 METAL RETAINING
 WALL

O.D.O.T. DISTRICT 2 SURVEY OFFICE (USE ONLY)

PERSONNEL

REFERENCE NO. 34

SHEET 36 OF 37

NOTES BARNHISEL

DATE 8/9/91

ROUTE US 23

H.C. VAN DUSEN

WEATHER CLOUDY

COUNTY WOOD

R.C. _____

TEMP. 65°

TOWNSHIP MONTGOMERY

DWG BY AUBLE PID 102922

SECTION 12

T 4 N R 12 E

TYPE MONUMENT P.K./WASHER

ON SURFACE - ~~BELOW~~ ON

OFFSET Q PAVEMENT 1.0' ~~ET~~ : RT

11.8' TO RT EDGE PAVEMENT

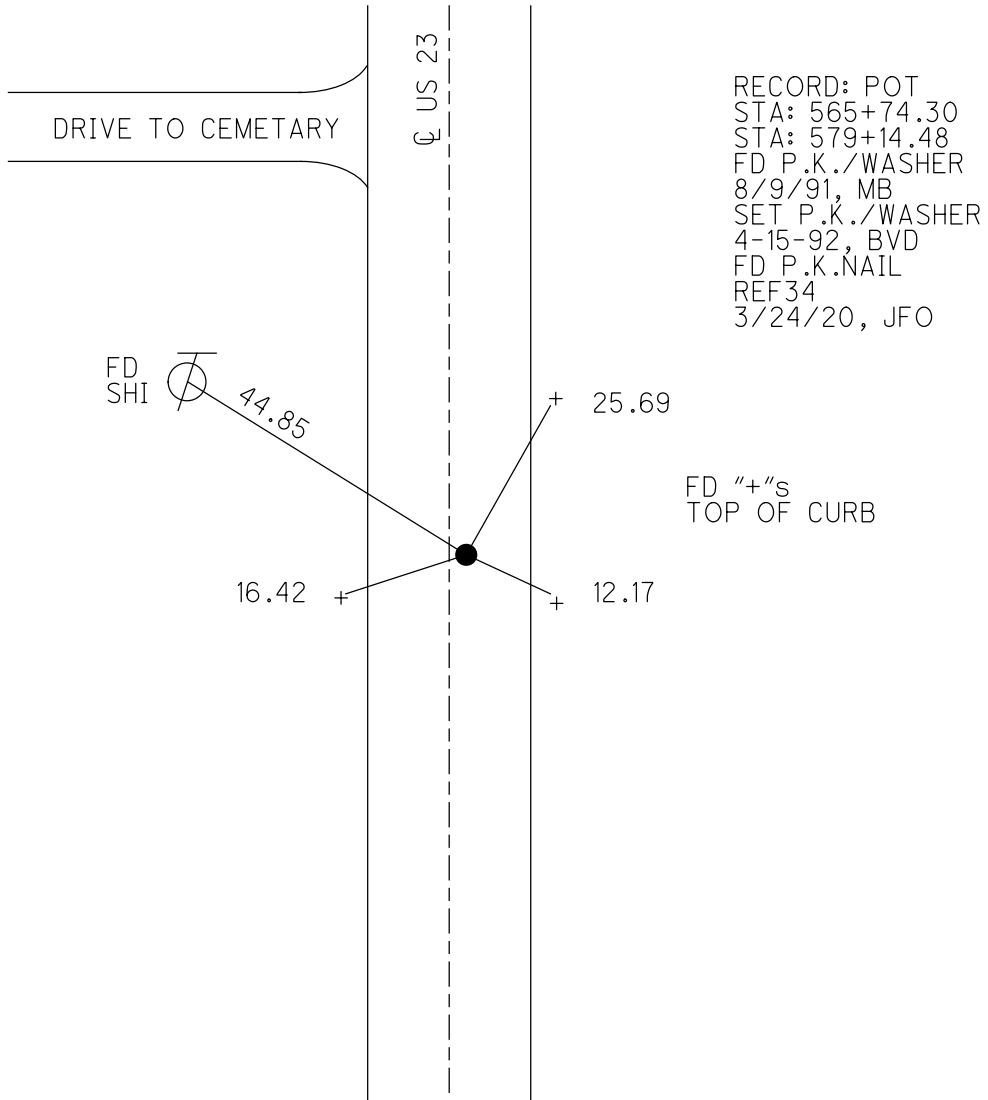
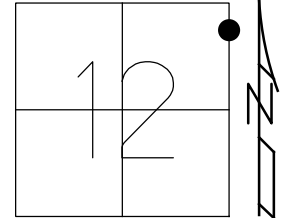
STATION: 579+41

HORIZ.DATUM: NAD83(2011)

GEOID: NAVD88 2018

GRID: NORTHING: 605733.159

EASTING: 1716452.393



O.D.O.T. DISTRICT 2 SURVEY OFFICE

PERSONNEL _____

REFERENCE NO. 34

SHEET 21 OF 23

NOTES BARNHISEL

H.C. Van Dusen

R.C. _____

DATE 8-9-91

WEATHER Cloudy

TEMP. +65°

ROUTE U.S. 23

COUNTY WOOD

TOWNSHIP Montgomery

SECTION 12

T 4 N R 12 E

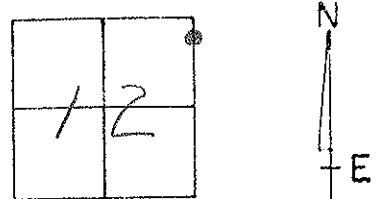
TYPE MONUMENT P.K. WASHER

ON SURFACE - BELOW yes

LEFT - C. PAV'T. - RIGHT 1.0

11.8 TO RT EDGE PAVEMENT

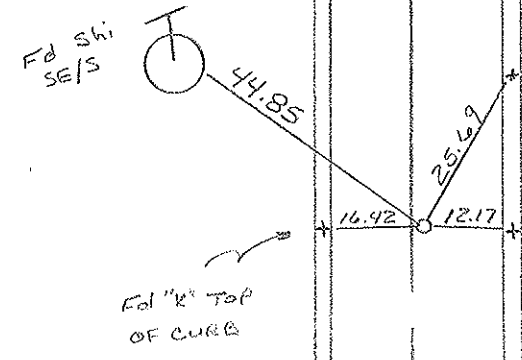
S.L.M. 579+41



RECORDED = P.O.T.
 STA = 565 + 74.30 =
 NEW STA: 579 + 14.48

SET PK/WASHER
 4-15-92
 BVD

DRIVE TO CEMETARY



RT PAV'T

County Wood S.R. U.S. 23

Date 7-30-81

Township Montgomery

Weather Clear

Section 12

Temp. +75°

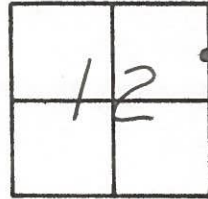
T4N, R4E

Personnel Hoffman

Loehrke

Householder

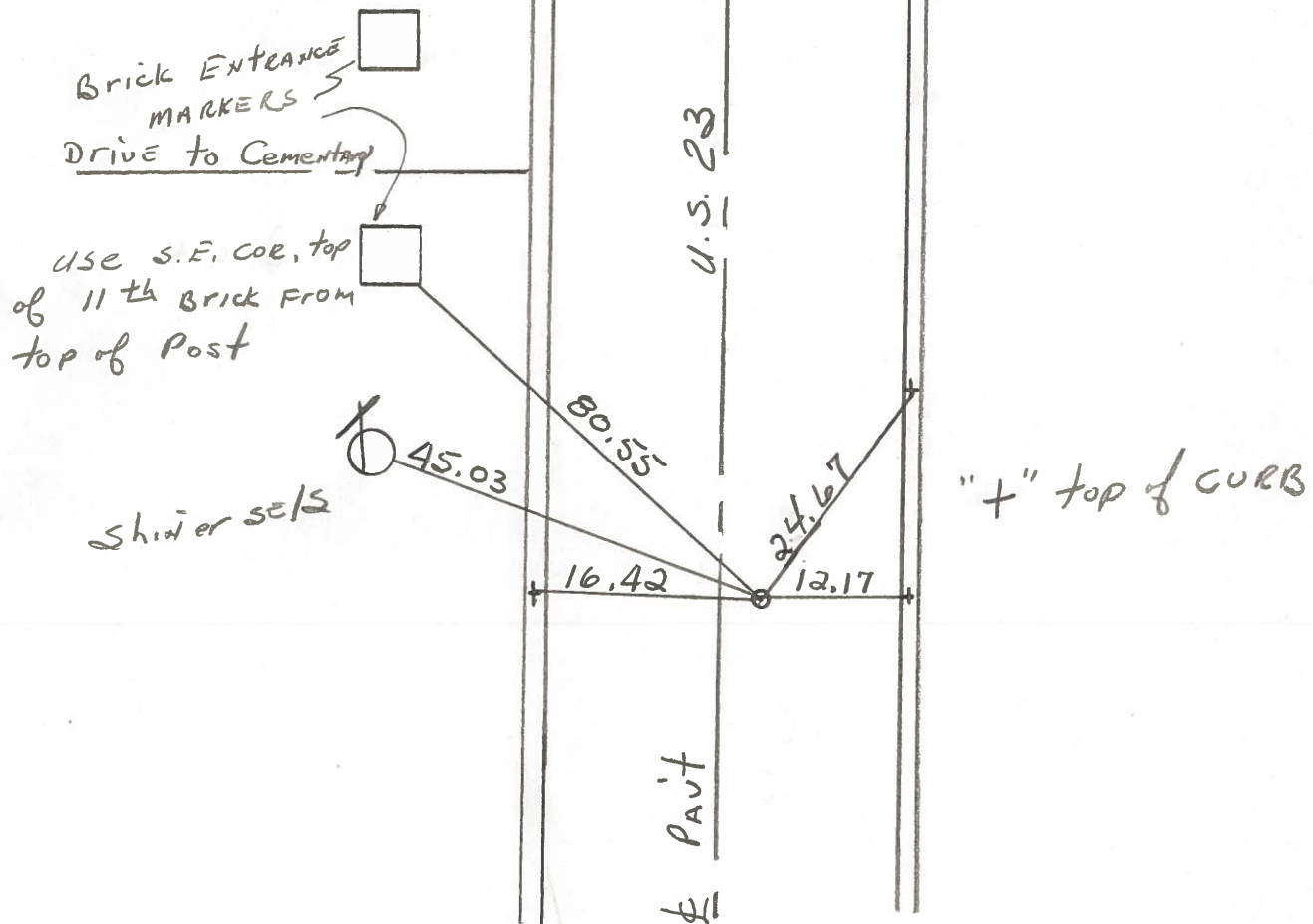
#34



Fd. R.L. Spk 2" Below Surface 2.3' E. of PAVT.

S.L.M. 580+56

SET P.K./WASHER
9/27/83
C.L.



STA 565+74.30 = New Survey STA. 579+14.48 P.O.T. ~ Rec.

PERSONNEL	TITLE	PERSONNEL	TITLE	COUNTY	DATE
<u>CK. BY</u>				<u>WOOD</u>	<u>OK. 7-16-70</u>
<u>SILVESTER</u>				S. R.	WEATHER
<u>BURNSIDE</u>				<u>U.S. #23</u>	
<u>SMITH</u>				SEC.	TEMP.

DESCRIPTION	<u>CONTROL TIES</u>		JOB NO.
	LEFT	CENTER LINE	RIGHT

STA. 565+74.30 NEW SURVEY STA. = ✓ 579+14.48 P.O. T. R.R. Spk. ON & SET P.K. #387					"X" TOP CURB E. 12.20 S.E. COR. BRICK POST N.W. 80.45 "X" CONC. CURB N.E. 25.67 SHINER T. POLE N.W. 46.32 "X" TOP CURB W. 16.40
STA. 542+75.95 NEW SURVEY STA. = ✓ 556+17.35 Δ = 0° 00' R.R. Spk. ON & SET P.K. SANDUSKY Co. #386					"X" W. END 5' CONC. PIPE N.W. 66.92 "X" E. END 5' CONC. PIPE N.E. 65.94 SHINER S. GUARD RAIL POST N.W. 46.02 SHINER SOUTH GUARD RAIL POST N.E. 43.98

#34

#33

PERSONNEL	TITLE	PERSONNEL	TITLE

COUNTY Wood DATE Oct 12-20-57

S. R. #199 WEATHER _____

SEC. _____ TEMP. _____

DESCRIPTION	LEFT	CENTER LINE	RIGHT	JOB NO.
-------------	------	-------------	-------	---------

Sta. 516+55.25 New Survey = 529+96.0' $\Delta = 0^\circ 11' R.$ R.R. spt. over stone - Pk. nail S.E. Cor. sec. 12 Mont.	31	#385	Shiner in Guard rail post S.W. 48.8 Shiner in Guard rail post N.E. 20.6 Bottom Shi. in 24" Elm N.W. 43.0	
Sta. 542+75.95 New Survey = 556+17.35 $\Delta = 0^\circ 00'$ R.R. spt. on Δ	33	#386	(Ties gone) S. end of Pava. wall N.W. 53.5 S. end of Wing wall N.E. 49.74 Shiner in 32" poplar S.W. 28.19	
Sta. 565+74.30 New Survey = 579+14.48 P.O.T. R.R. spt. on Δ - Pk. nail	34	#387	X-on top of curb E. 12.24 S.E. Cor. brick post N.W. 80.4 X-in Conc. curb N.E. 25.6 X-in N.W. Cor. conc. walk S.E. 63.4 Shiner in 18" birch S.W. 43.85 Shiner in T.P. N.W. 46.3 X-in top of curb W. 16.4	
Sta. 569+93.67 New Survey = 583+34.05 $\Delta = 0^\circ 14' Lt.$ S.E. Cor. Sec #1 Montgomery R.R. spt. over stone - Pk. nail	35	#388	E.W. men N.W. 44.0 E.W. men N.E. 46.9 E.W. men N.E. 45.14 E.W. men S.E. 55.1 Cor. iron fence post S.W. 43.5 Shiner in 4 th guard rail post S.E.W. 54.3 Shiner in T.P. S.W. 43.0 Shiner in 1 st guard rail post S.W. 23.9	