

O.D.O.T. DISTRICT 2 SURVEY OFFICE (USE ONLY)

PERSONNEL

REFERENCE NO. 35

SHEET 44 OF 46

NOTES RHOADES

DATE 8/9/91

ROUTE US 23

H.C. O'DONNELL

WEATHER CLOUDY

COUNTY WOOD

R.C. KETNER

TEMP. 65°

TOWNSHIP MONTGOMERY

AUBLE

SECTION 1

DWG BY RHOADES PID R/W

T 4 N R 12 E

TYPE MONUMENT MAG/WASHER

ON SURFACE - ~~BELOW~~ ON

OFFSET \varnothing PAVEMENT 1.8' ~~LT~~ : RT

10.6' TO RT EDGE PAVEMENT

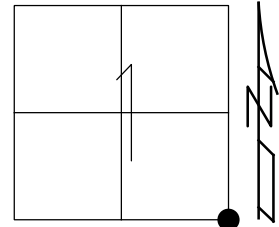
STATION: 583+30.24

HORZ.DATUM: NAD83(2011)

GEOID: NAVD88 2018

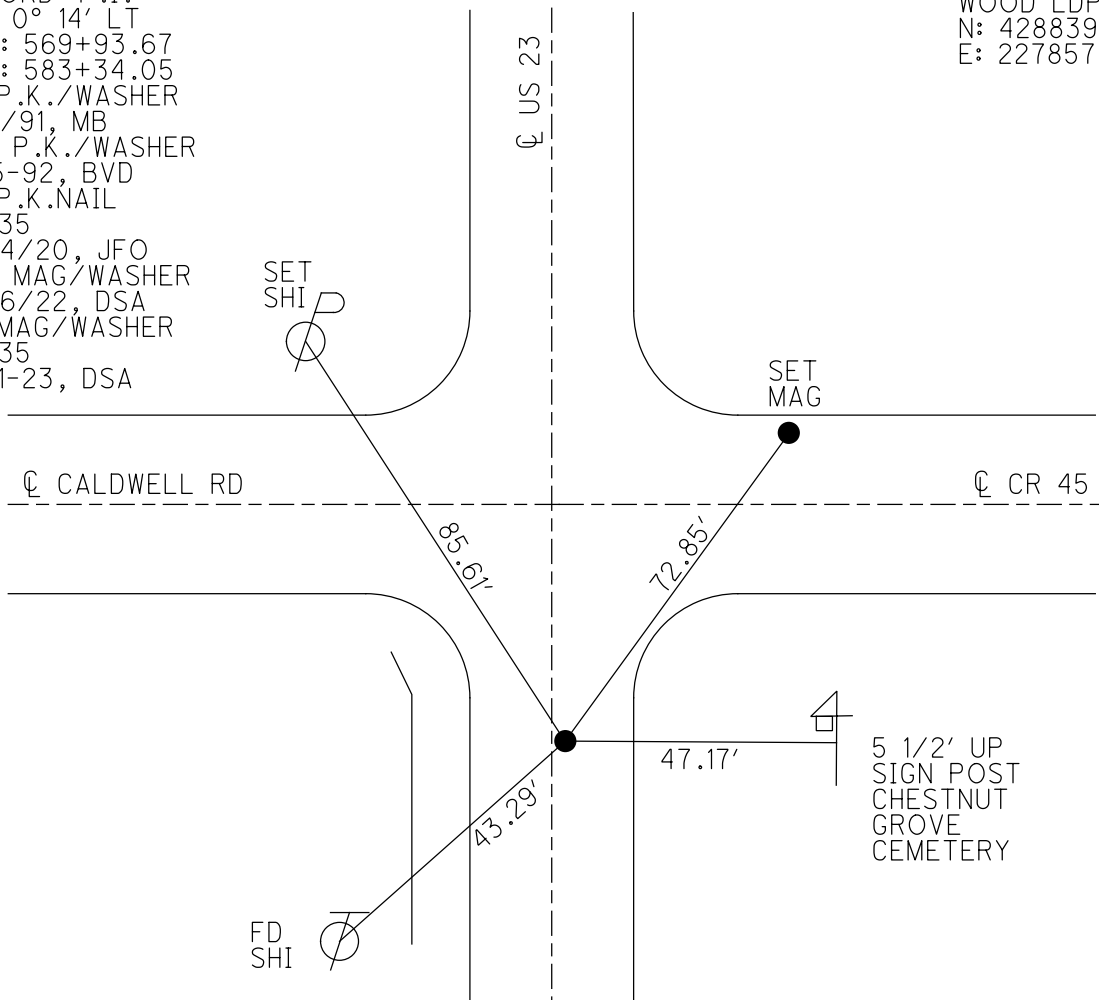
GRID: NORTHING: 606152.276

EASTING: 1716466.529



RECORD: P.I.
 $\Delta = 0^\circ 14' LT$
 STA: 569+93.67
 STA: 583+34.05
 FD P.K./WASHER
 8/9/91, MB
 SET P.K./WASHER
 4-15-92, BVD
 FD P.K.NAIL
 REF35
 3/24/20, JFO
 SET MAG/WASHER
 9/26/22, DSA
 FD MAG/WASHER
 REF35
 6-21-23, DSA

WOOD LDP:
 N: 428839.741
 E: 227857.905

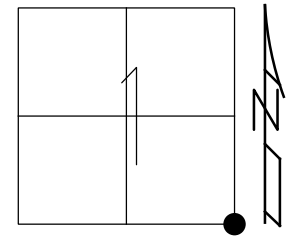


O.D.O.T. DISTRICT 2 SURVEY OFFICE (USE ONLY)

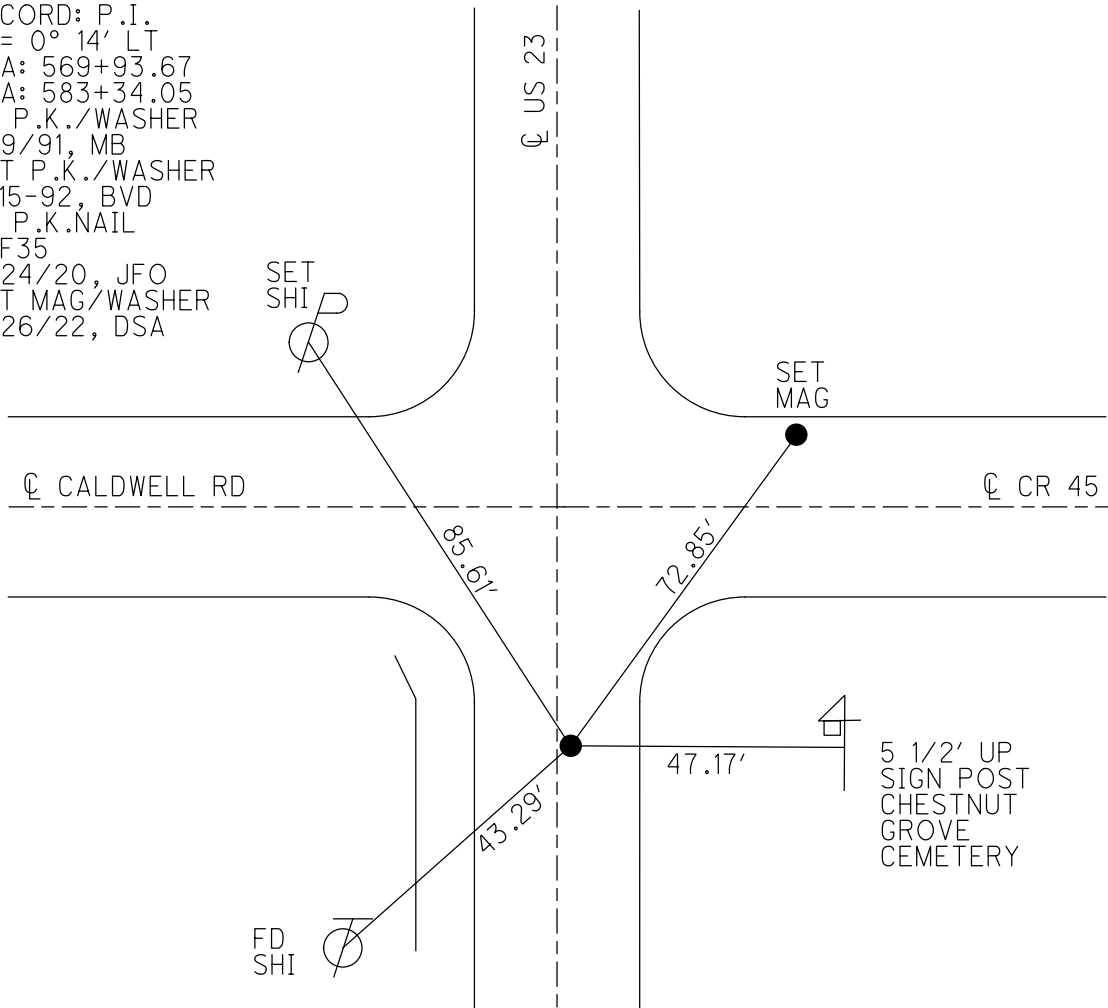
PERSONNEL _____ REFERENCE NO. 35 SHEET 44 OF 46
 NOTES RHOADES DATE 8/9/91 ROUTE US 23
 H.C. O'DONNELL WEATHER CLOUDY COUNTY WOOD
 R.C. KETNER TEMP. 65° TOWNSHIP MONTGOMERY
AUBLE SECTION 1
 DWG BY RHOADES PID 102922 T 4 N R 12 E

TYPE MONUMENT P.K.NAIL
 ON SURFACE - ~~BELOW~~ ON
 OFFSET \bar{C} PAVEMENT 1.8' \bar{E} : RT
10.6' TO RT EDGE PAVEMENT
 STATION: 583+30.24

HORIZ.DATUM: NAD83(2011) GEOID: NAVD88 2018
 GRID: NORTHING: 606152.276 EASTING: 1716466.529



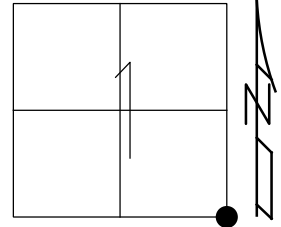
RECORD: P.I.
 $\Delta = 0^\circ 14' \text{ LT}$
 STA: 569+93.67
 STA: 583+34.05
 FD P.K./WASHER
 8/9/91, MB
 SET P.K./WASHER
 4-15-92, BVD
 FD P.K.NAIL
 REF35
 3/24/20, JFO
 SET MAG/WASHER
 9/26/22, DSA



O.D.O.T. DISTRICT 2 SURVEY OFFICE (USE ONLY)

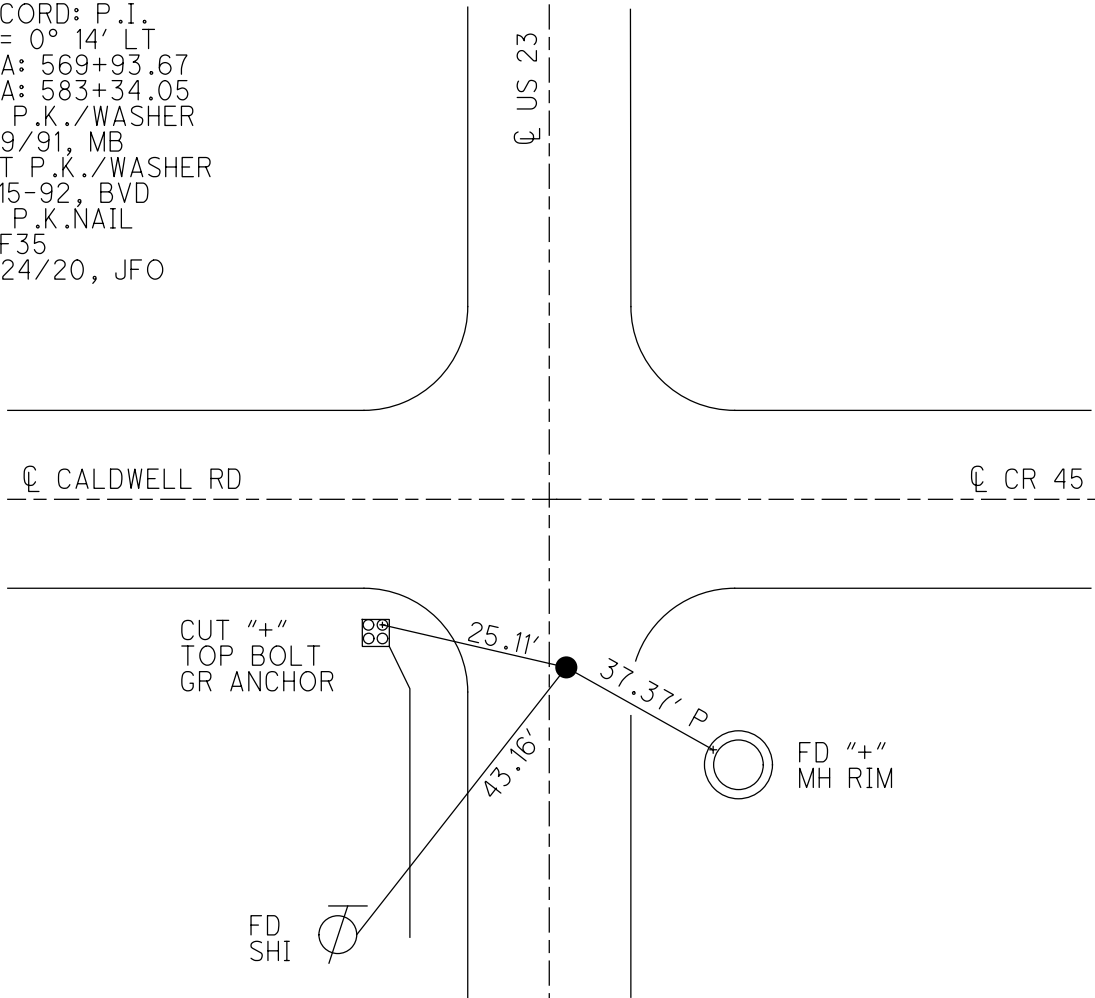
PERSONNEL _____ REFERENCE NO. 35 SHEET 37 OF 37
 NOTES BARNHEISEL DATE 8/9/91 ROUTE US 23
 H.C. VAN DUSEN WEATHER CLOUDY COUNTY WOOD
 R.C. _____ TEMP. 65° TOWNSHIP MONTGOMERY
 _____ SECTION 1
 DWG BY AUBLE PID 102922 T 4 N R 12 E

TYPE MONUMENT P.K./WASHER
 ON SURFACE - ~~BELOW~~ ON
 OFFSET \varnothing PAVEMENT 1.8' ~~LT~~ : RT
10.6' TO RT EDGE PAVEMENT
 STATION: 583+60



HORIZ.DATUM: NAD83(2011) GEOID: NAVD88 2018
 GRID: NORTHING: 606152.276 EASTING: 1716466.529

RECORD: P.I.
 $\Delta = 0^\circ 14' \text{ LT}$
 STA: 569+93.67
 STA: 583+34.05
 FD P.K./WASHER
 8/9/91, MB
 SET P.K./WASHER
 4-15-92, BVD
 FD P.K.NAIL
 REF35
 3/24/20, JFO



O.D.O.T. DISTRICT 2 SURVEY OFFICE

PERSONNEL _____

REFERENCE NO. 35

SHEET 22 OF 23

NOTES BARNHISEL

H.C. VAN DUSEN

R.C. _____

DATE 8-9-91

WEATHER Cloudy

TEMP. +65°

ROUTE U.S. 23

COUNTY WOOD

TOWNSHIP Montgomery

SECTION 1

T4 N R 12 E

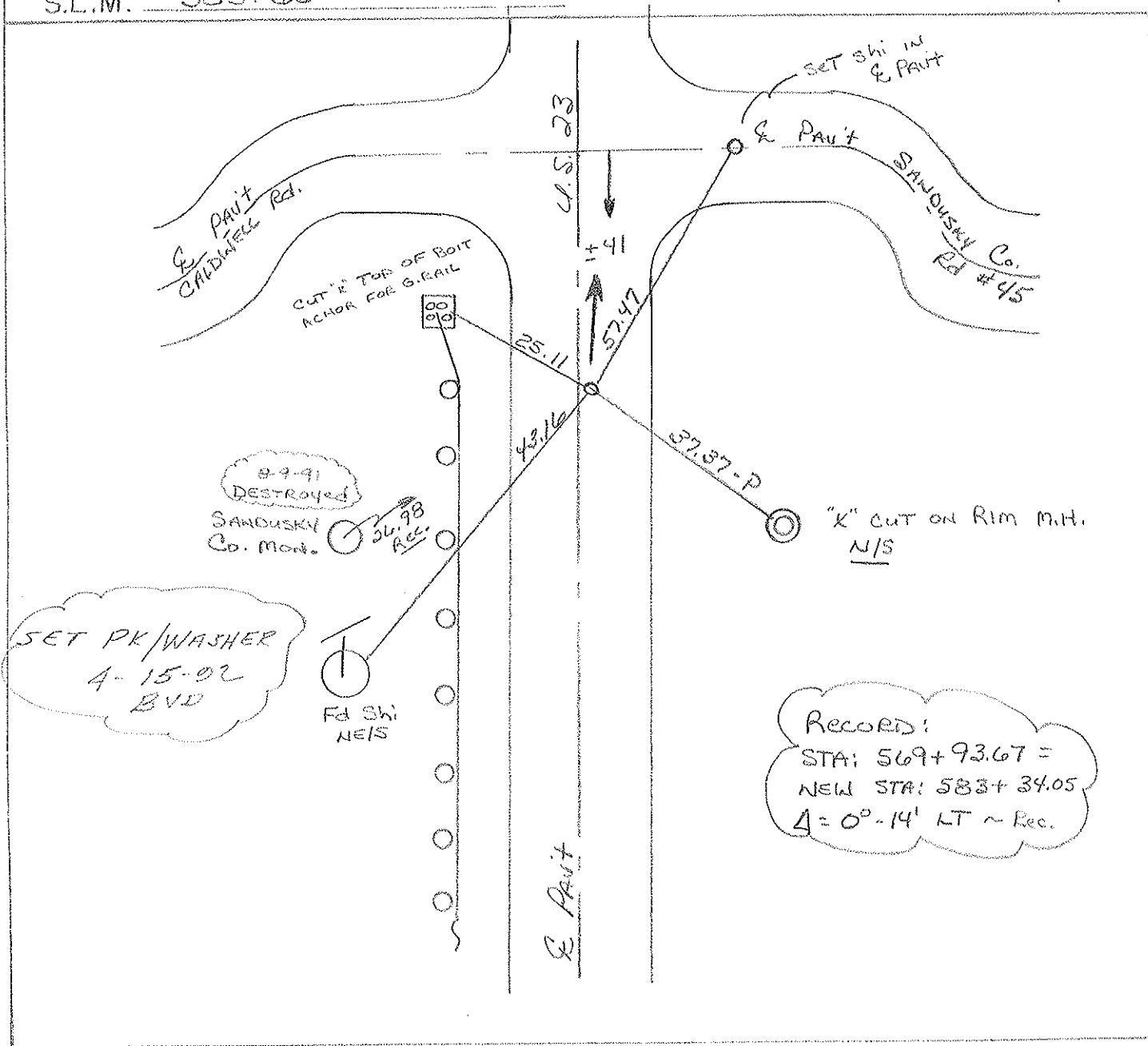
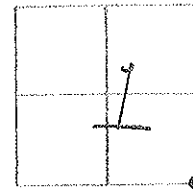
TYPE MONUMENT P.K. WASHER

ON SURFACE - BELOW yes

LEFT - Q PAVT. - RIGHT 1.8

10.6 TO RT. EDGE PAVEMENT

S.L.M. 583+60



County Wood S.R. U.S. 23

Date 7-30-81

Township Montgomery

Weather clear

Section 1

Temp. + 75°

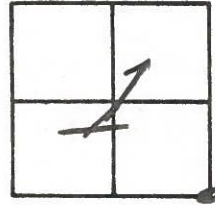
T4N, R12E

Personnel Hoffman

Loehrke

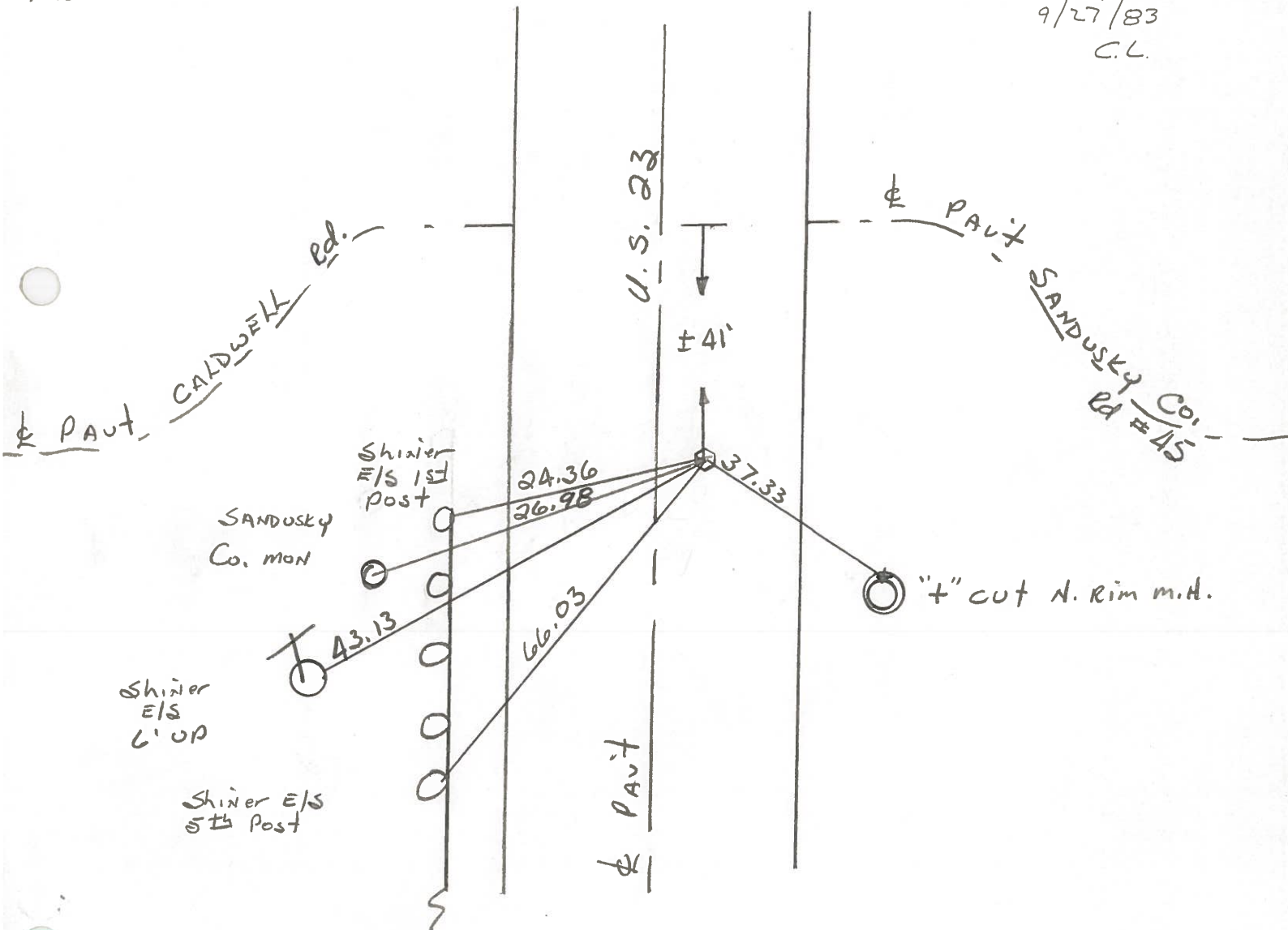
Householder

#35



Fd. R.R. SPK @ Surface, 2.5' E. of & part U.S. 23 S.L.M. 584+76
13.9' to W.E.P.
10.2' to E.E.P.

SET P.K./WASHER
9/27/83
C.L.



STA. 569+93.67 = New Survey STA 583+34.05 - Δ = 0° - 14' Lt ~ Rec

PERSONNEL TITLE PERSONNEL TITLE

CK. BY
SILVESTER
BURNSIDE
SMITH

COUNTY: Wood DATE: 7-16-70

S. R. U.S. #23 WEATHER

SEC. FOSTORIA To U.S. #6 TEMP.

DESCRIPTION CONTROL TIES JOB NO.

| LEFT | CENTER LINE | RIGHT |
|---|-------------|--|
| <p>NEW SURVEY STA. = 636 + 13.40 INTERSECTION U.S. #6 & U.S. #23 #390 & #61 #31</p> | ✓ | <p>"X" CURB S.E. 35.92' "X" CURB S.W. 42.06' "X" CURB N.W. 36.06' "X" CURB N.E. 41.98' "X" N.E. COR. PUMP ISLAND BASE S.W. 74.80'</p> |
| <p>STA. 596 + 32.30' NEW SURVEY STA. = 609 + 72.95 Δ = 0°-00' R.R. SPK. ON & #389 #36</p> | ✓ | <p>SHINER P. POLE W.S.W. 41.55' SHINER T. POLE N.E. 73.15' CHISEL MKK. N. END C.M.P. S.E. 38.58'</p> |
| <p>STA. 569 + 93.67 NEW SURVEY STA. = 583 + 34.05 Δ = 0°-14' LT. S.E. COR. SEC. 1 MONTGOMERY TWP. R.R. SPK. OVER STONE SET R.R. SPK. #388 #35</p> | ✓ | <p>"X" E. Rim M.H. S.E. 38.78' SANDUSKY MON S.W. 26.86' SHI. 4th GUARD RAIL POST S.W. 54.33' SHI. 1st GUARD RAIL POST W.S.W. 24.37' SHI. T. POLE S.W. 43.05'</p> |

| PERSONNEL | TITLE | PERSONNEL | TITLE |
|-----------|-------|-----------|-------|
| | | | |
| | | | |
| | | | |

COUNTY Wood DATE OK 12-20-57
 S. R. #199 WEATHER _____
 SEC. _____ TEMP. _____

| DESCRIPTION | LEFT | CENTER LINE | RIGHT | JOB NO. |
|-------------|------|-------------|-------|---------|
|-------------|------|-------------|-------|---------|

| | | | | |
|--|--|-------------|---|--|
| Sta. 516+55.25 New Survey = 529+96.0' $\Delta = 0^\circ 11' R.$ R.R. spt, over stone - Pk nail S.E. cor. sec. 12 Mont. 31 #385 | | | Shiner in Guard rail post S.W. 48.8 Shiner in Guard rail post N.E. 20.6 Bottom Shi in 24" Elm N.W. 43.0 | |
| Sta. 542+75.95 New Survey = 556+17.35 $\Delta = 0^\circ 00'$ R.R. spt. on E. 33 #386 | | (Ties gone) | End of Pava. wall N.W. 53.5 End of Wing wall N.E. 49.74 Shiner in 32" poplar S.W. 88.19 | |
| Sta. 565+74.30 New Survey = 579+14.48 P.O.T. R.R. spt. on E. - Pk. nail 34 #387 | | | X-on top of curb E. 12.24 S.E. Cor. brick post N.W. 80.4 X-in Conc. curb N.E. 25.6 X-in N.W. Cor. Conc. walk S.E. 63.4 Shiner in 18" birch S.W. 43.8 Shiner in T.P. N.W. 46.3 X-in top of curb W. 16.4 | |
| Sta. 569+93.67 New Survey = 583+34.05 $\Delta = 0^\circ 14' L.$ S.E. Cor. Sec #1 Montgomery R.R. spt over stone - Pk nail. 35 #388 | | | E.W. man N.W. 44.0 E.W. man N.E. 46.9 E.W. man N.E. 45.14 E.W. man S.E. 55.1 Cor. iron fence post S.W. 43.5 Shiner in 4 th guard rail post S.E.W. 54.3 Shiner in T.P. S.W. 43.0 Shiner in 1 st guard rail post W.S.W. 23.9 | |