

O.D.O.T. DISTRICT 2 SURVEY OFFICE (USE ONLY)

PERSONNEL

REFERENCE NO. 36 A

SHEET 46 OF 46

NOTES RHOADES  
 H.C. O'DONNELL  
 R.C. KETNER

DATE 4/20/22  
 WEATHER SUNNY  
 TEMP. 50°

ROUTE US 23  
 COUNTY WOOD  
 TOWNSHIP MONTGOMERY  
 SECTION 1

DWG BY RHOADES PID 102922

T 4 N R 12 E

TYPE MONUMENT P.K.NAIL

~~ON SURFACE~~ - BELOW 2"

OFFSET CL PAVEMENT ON LT : ~~RT~~

11.3' TO LT EDGE PAVEMENT

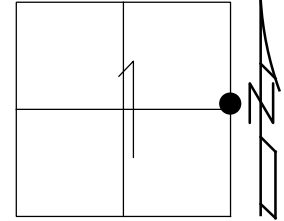
STATION: 609+68.66

HORZ.DATUM: NAD83(2011)

GEOID: NAVD88 2018

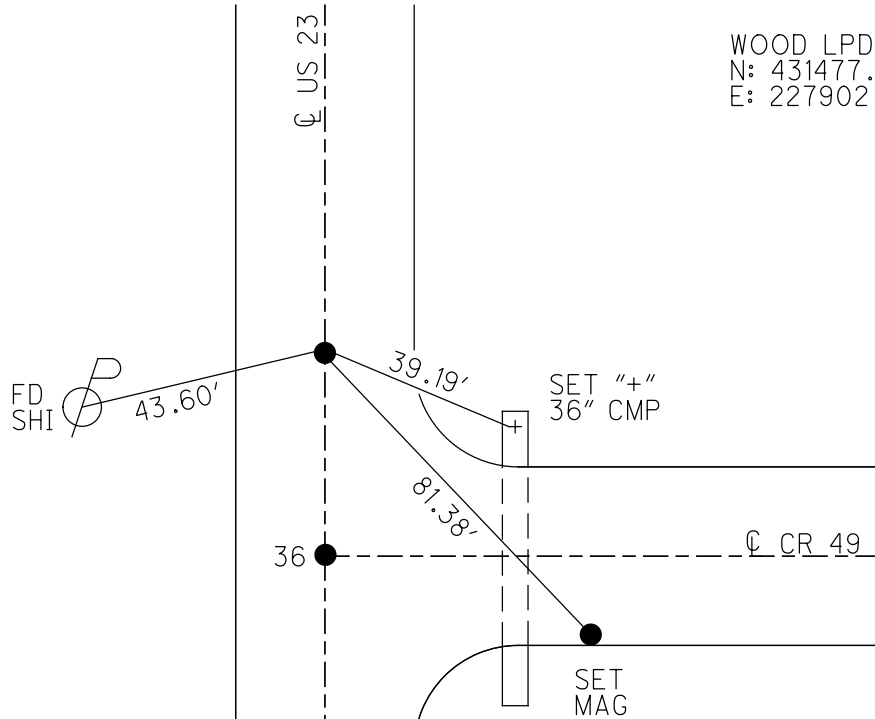
GRID: NORTHING: 608789.490

EASTING: 1716546.332



RECORD: P.I.  
 STA: 596+32.30  
 STA: 609+72.95  
 Δ= 0° 00' REC  
 SET P.K./WASHER  
 4/15/92, BVD  
 FD P.K./WASHER  
 REF36  
 11/29/12, SAH  
 FD P.K.SHANK  
 4" DOWN  
 REFA36  
 3/24/20, JFO  
 SET MAG/WASHER  
 9/26/22, DSA

WOOD LPD:  
 N: 431477.989  
 E: 227902.895



DIST.36-36A= 49.17'

O.D.O.T. DISTRICT 2 SURVEY OFFICE (USE ONLY)

PERSONNEL

REFERENCE NO. 36 A

SHEET 46 OF 46

NOTES RHOADES

DATE 4/20/22

ROUTE US 23

H.C. O'DONNELL

WEATHER SUNNY

COUNTY WOOD

R.C. KETNER

TEMP. 50°

TOWNSHIP MONTGOMERY

AUBLE

DWG BY RHOADES

PID 102922

SECTION 1

T 4 N R 12 E

TYPE MONUMENT P.K.NAIL

~~ON SURFACE~~ - BELOW 2"

OFFSET  $\oslash$  PAVEMENT ON LT : ~~RT~~

11.3' TO LT EDGE PAVEMENT

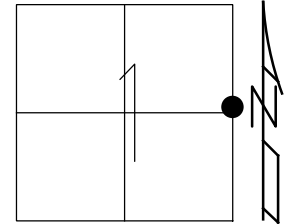
STATION: 609+68.66

HORZ.DATUM: NAD83(2011)

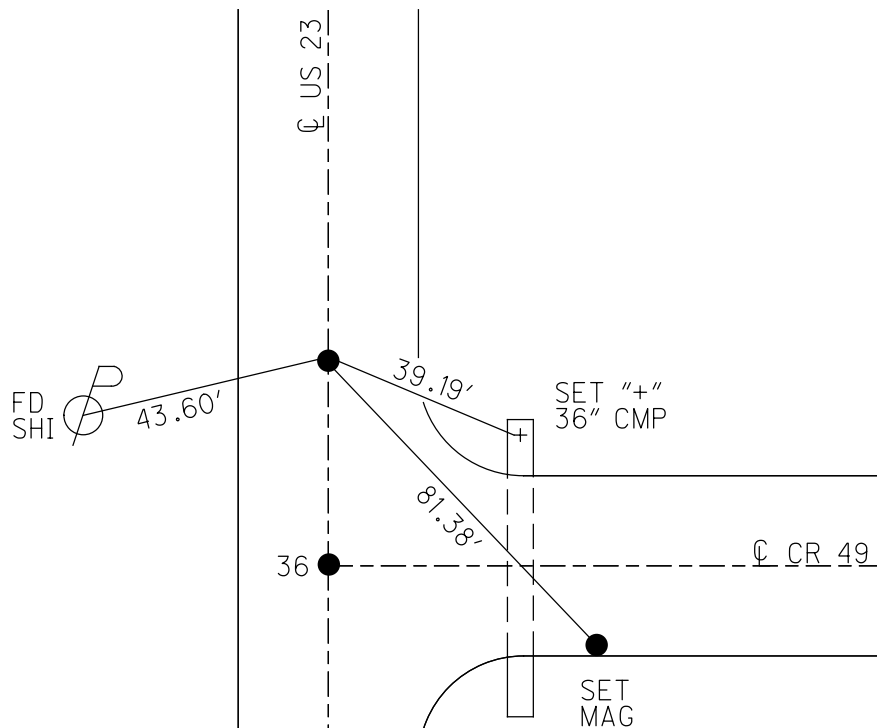
GEOID: NAVD88 2018

GRID: NORTHING: 608789.490

EASTING: 1716546.332



RECORD: P.I.  
 STA: 596+32.30  
 STA: 609+72.95  
 $\Delta = 0^\circ 00'$  REC  
 SET P.K./WASHER  
 4/15/92, BVD  
 FD P.K./WASHER  
 REF36  
 11/29/12, SAH  
 FD P.K.SHANK  
 4" DOWN  
 REFA36  
 3/24/20, JFO  
 SET MAG/WASHER  
 9/26/22, DSA

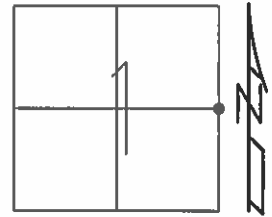


DIST.36-36A= 49.17'

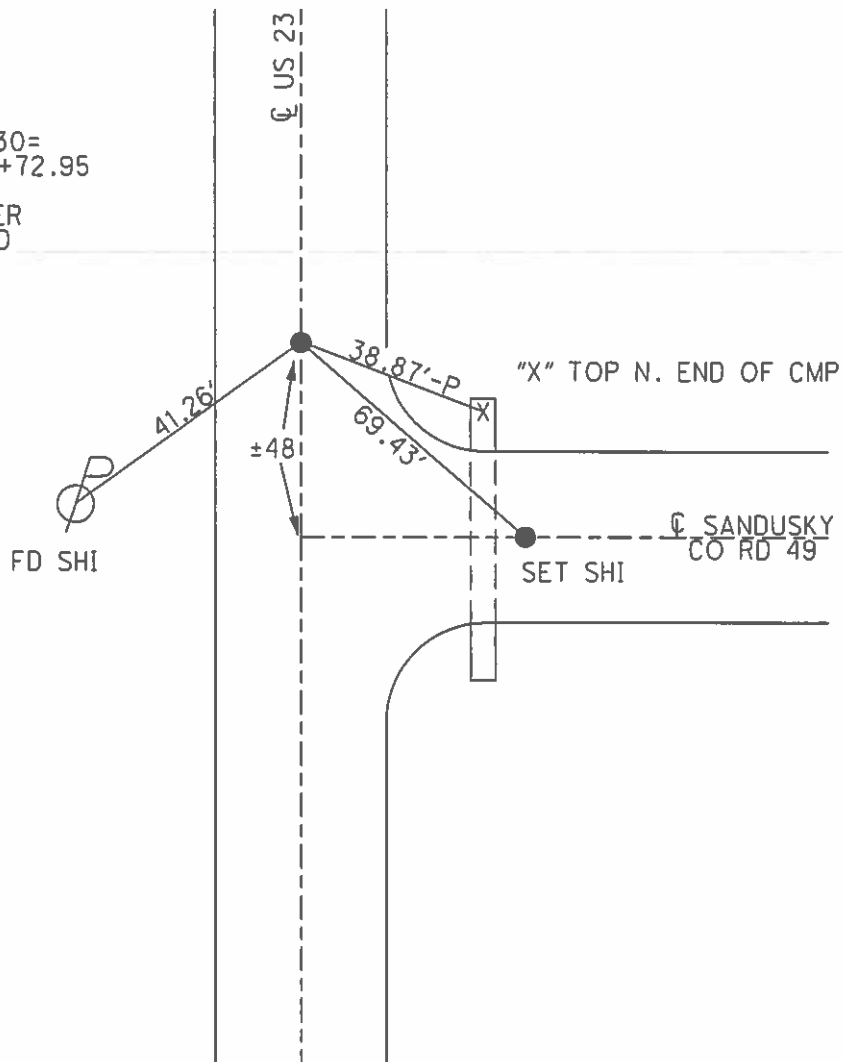
O.D.O.T. DISTRICT 2 SURVEY OFFICE (USE ONLY)

PERSONNEL \_\_\_\_\_ REFERENCE NO. 36 SHEET 1 OF 22  
 NOTES BARNHISEL DATE 08/09/91 ROUTE US 23  
 H.C. VAN DUSEN WEATHER CLOUDY COUNTY WOOD  
 R.C. \_\_\_\_\_ TEMP. 65° TOWNSHIP MONTGOMERY  
 \_\_\_\_\_ SECTION 1  
 \_\_\_\_\_ T 4 N R 12 E

TYPE MONUMENT \_\_\_\_\_ PK/WASHER \_\_\_\_\_  
 ON SURFACE - ~~BELOW~~ \_\_\_\_\_ ON \_\_\_\_\_  
~~LEFT~~ - Q PAV'T - ~~RIGHT~~ \_\_\_\_\_ ON \_\_\_\_\_  
11.3 TO LT EDGE PAVEMENT  
 S.L.M. 609+73.47  
 Grid: Northing: \_\_\_\_\_ Easting: \_\_\_\_\_



RECORD:  
 STA: 596+32.30=  
 NEW STA: 609+72.95  
 $\Delta=0^{\circ}-00'$  REC  
 SET PK/WASHER  
 04/15/92, BVD  
 FD SHOT GPS  
 11/29/12, SAH



O.D.O.T. DISTRICT 2 SURVEY OFFICE

PERSONNEL

REFERENCE NO. 36

SHEET 23 OF 23

NOTES BARNHISEL

H.C. VAN DUSEN

R.C. \_\_\_\_\_

DATE 8-9-91

WEATHER Cloudy

TEMP. +65°

ROUTE U.S. 23

COUNTY WOOD

TOWNSHIP MONTGOMERY

SECTION 1

T 4 N R 12 E

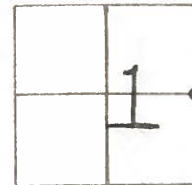
TYPE MONUMENT P.K. & WASHER

ON SURFACE - ~~BELOW~~ YES

LEFT - ~~C~~ PAV'T. - RIGHT YES

11.3 TO LT EDGE PAVEMENT

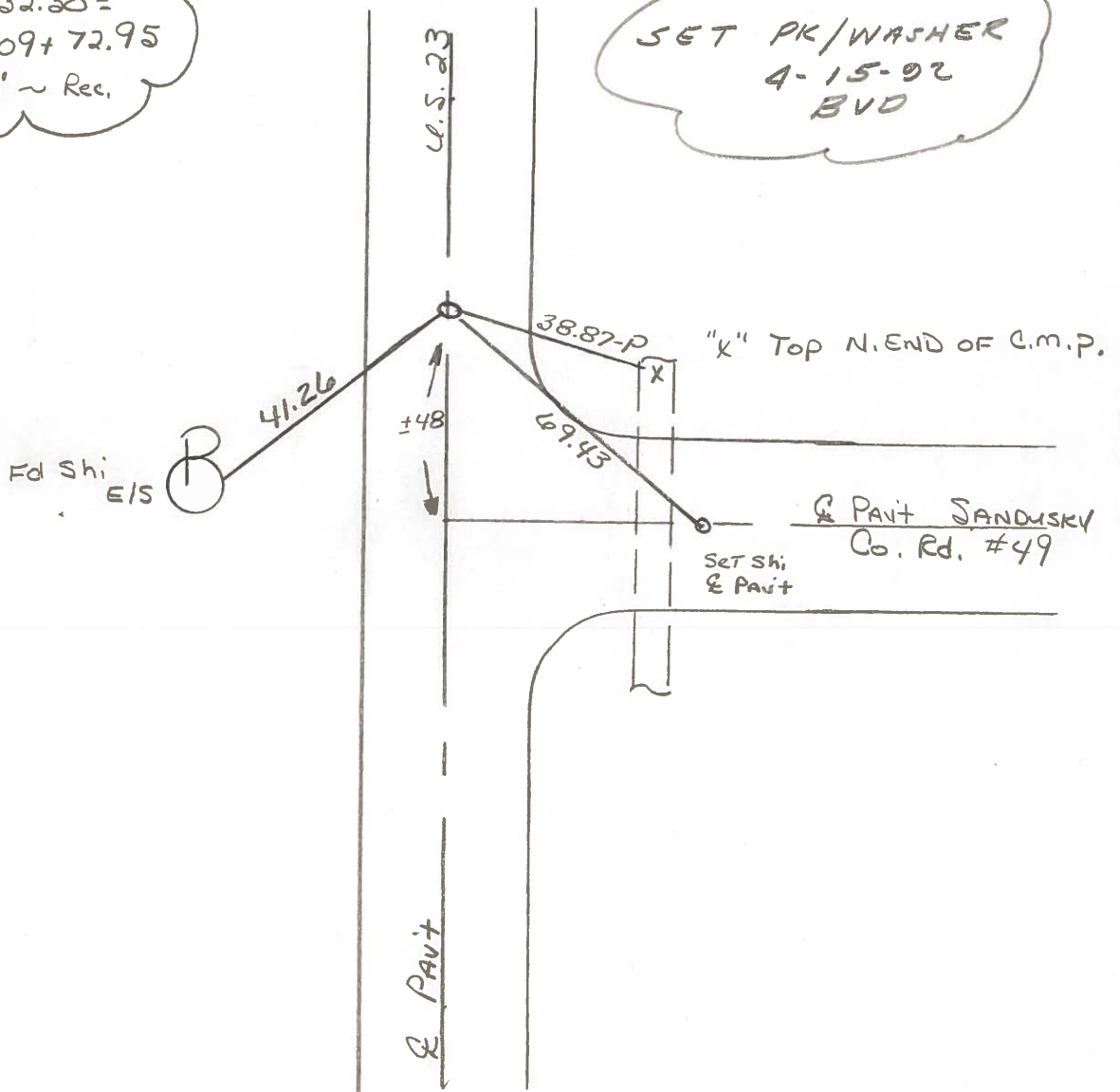
S.L.M. 609+99



Record:

STA: 596+32.30 =  
NEW STA: 609+72.95  
Δ = 0°-00' ~ Rec.

SET PK/WASHER  
4-15-92  
BVD



County Wood S.R. U.S. 23

Date 7-30-81

Township Montgomery

Weather Clear

Section 1

Temp. +75°

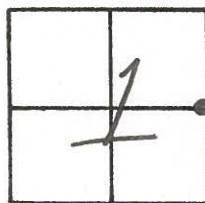
T4N, R12E

Personnel Hoffman

Loehrke

Householder

# 36



Fd. R.R. SPK @ SURFACE @ CTR PAUTUS 23

S.L.M. = 611722

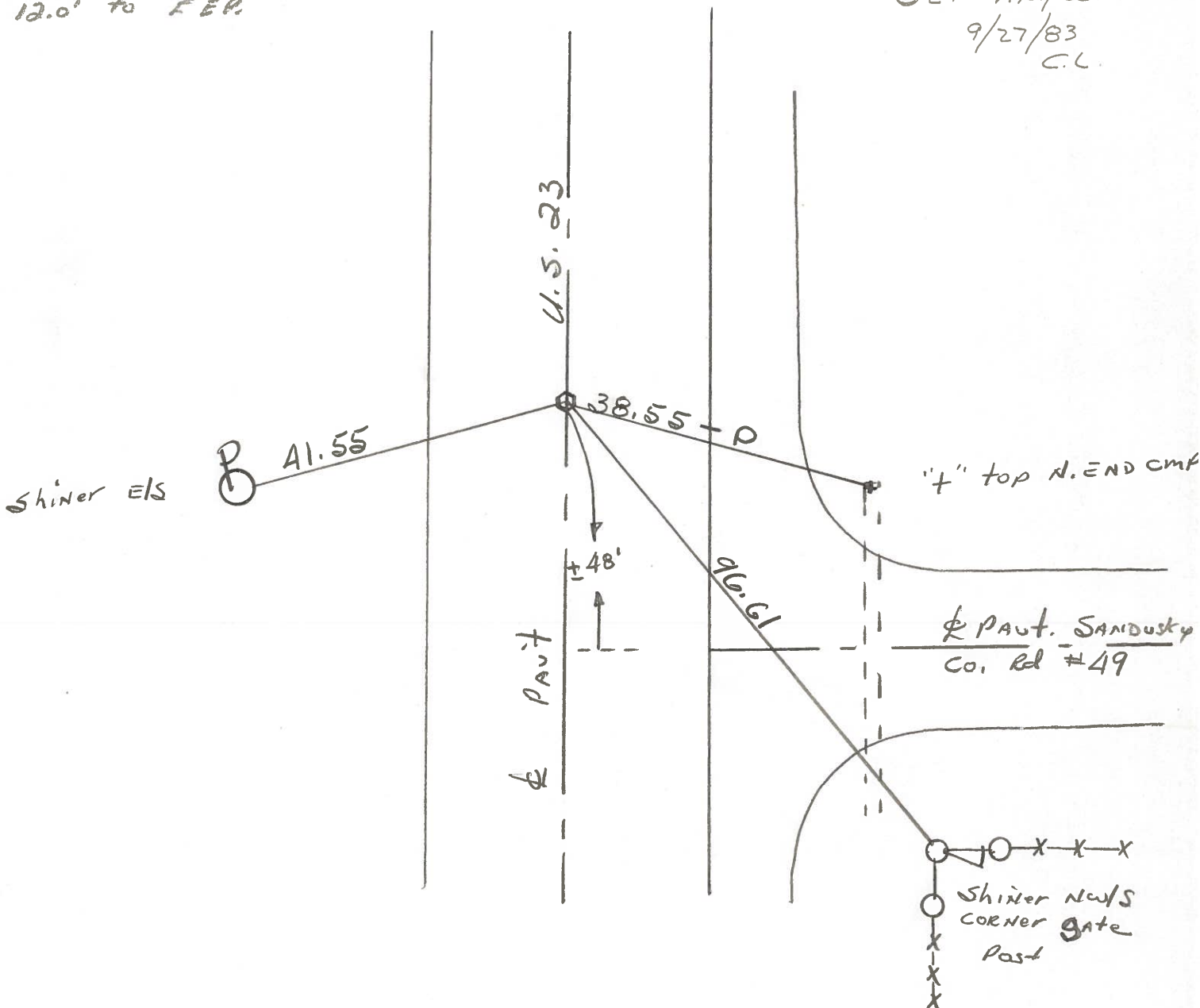
12.0' to WEP.

12.0' to FER.

SET P.K./WASHER

9/27/83

C.L.



STA. 596+32.30 = New Survey STA. 609+72.95 - No 4 ~ Rec.

PERSONNEL TITLE PERSONNEL TITLE

OK BY  
SILVESTER  
BURNSIDE  
SMITH

COUNTY WOOD DATE 7-16-70

S. R. U.S. #23 WEATHER \_\_\_\_\_

SEC. FOSTORIA To U.S. #6 TEMP \_\_\_\_\_

DESCRIPTION CONTROL TIES JOB NO. \_\_\_\_\_

LEFT CENTER LINE RIGHT

<p>NEW SURVEY STA. =                      636+13.40                      INTERSECTION U.S. #6 &amp;                      U.S. #23                      #390 &amp; #61                      #31</p>		<p>✓</p>	<p>"X" CURB S.E. 35.92                      "X" CURB S.W. 42.06                      "X" CURB N.W. 36.06                      "X" CURB N.E. 41.98                      "X" N.E. COR. PUMP ISLAND                      BASE S.W. 74.81</p>
<p>STA. 596+32.30                      NEW SURVEY STA. =                      609+72.95                      Δ = 0° 00'                      R.R. SPK. ON &amp;                      #387                      #36</p>		<p>✓</p>	<p>SHINER P. POLE W.S.W. 41.5                      SHINER T. POLE N.E. 73.1                      CHISEL MKR. N. END C.M.P.                      S.E. 38.56</p>
<p>STA. 569+93.67                      NEW SURVEY STA. =                      583+34.05                      Δ = 0° 14' LT.                      S.E. COR. SEC. 1                      MONTGOMERY TWP.                      R.R. SPK. OVER STONE                      SET R.R. SPK.                      #388                      #35</p>		<p>✓</p>	<p>"X" E. Rim M.H. S.E. 38.78                      SANDUSKY MON S.W. 26.86                      SHI. 4<sup>th</sup> GUARD RAIL POST S.S.W. 54.3                      SHI. 1<sup>st</sup> GUARD RAIL POST W.S.W. 24.3                      SHI. T. POLE S.W. 43.0</p>

PERSONNEL TITLE PERSONNEL TITLE

COUNTY Wood DATE OK 12-20-57

S. R. #199 WEATHER

SEC. TEMP.

DESCRIPTION LEFT CENTER LINE RIGHT JOB NO.

Sta. 596+32.30'			Flw mon.	W.	29.36'
New survey = 609+72.95			Flw mon.	E.	30.40'
$\Delta = 0^{\circ}-00'$			6" iron pipe	S.E.	37.49'
E.R. spike on $\phi$ - P. Kinail			Shi. 20" Elm	S.W.	79.26'
36			Shiner in P.P.	W.S.W.	41.55'
#389			Shiner in T.P.	N.E.	73.20'
			Chisel mark Niend c.m.p. S.E.		38.58'

New survey Sta. 636+13.40		5/4/60	X-SE. cor. pump island N.W.		69.50'
Intersection U.S. #6 & S.R. #199			X-in N.E. cor. old pump island		
37			base S.W.		74.80'
#390			Shiner in P.P.	S.E.	87.07'
#61 = SAME.					

#390A No Ties