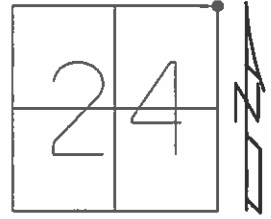


O.D.O.T. DISTRICT 2 SURVEY OFFICE (USE ONLY)

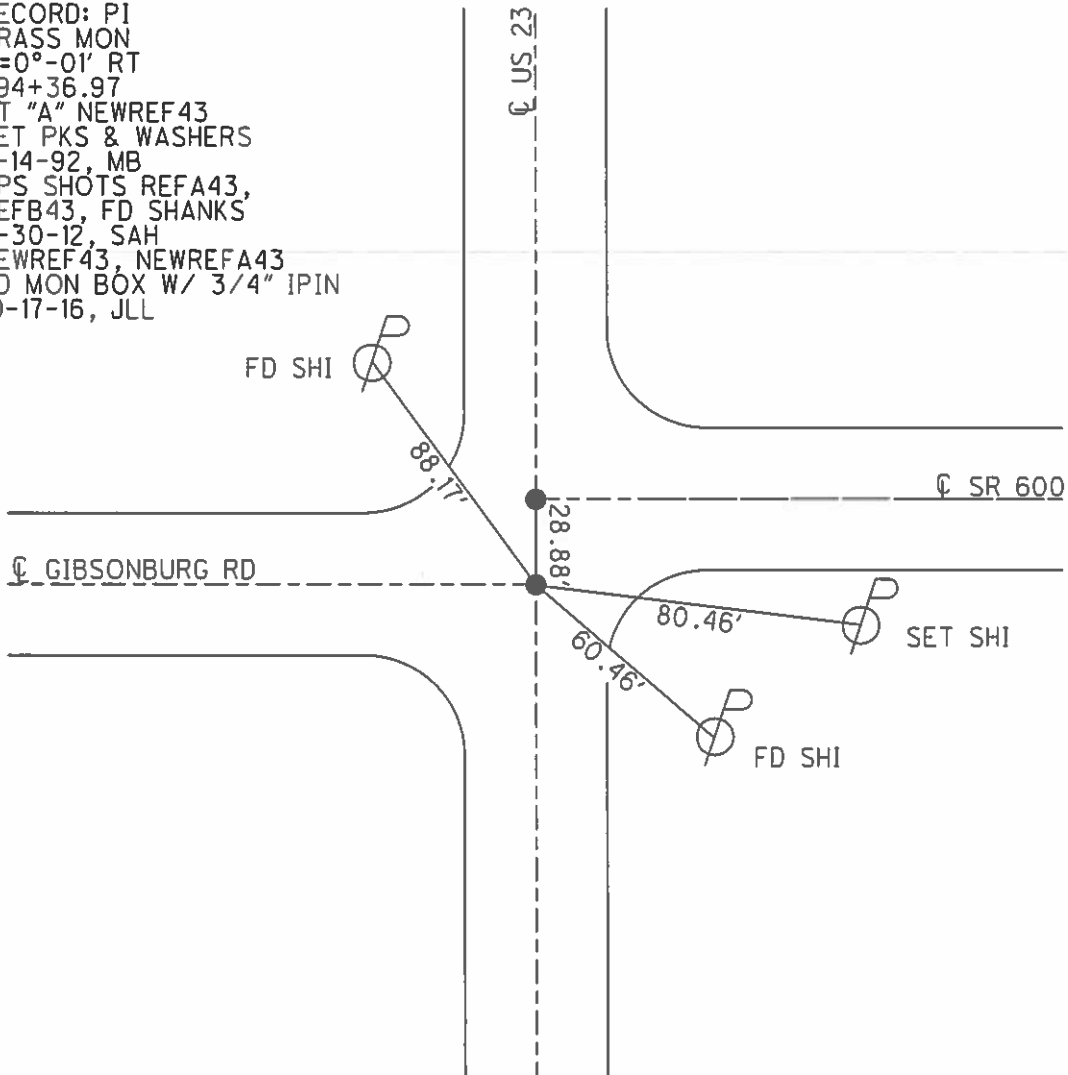
PERSONNEL	REFERENCE NO.	<u>43</u>	SHEET	<u>11</u>	OF	<u>22</u>
NOTES	<u>RHOADES</u>	DATE	<u>4-21-14</u>	ROUTE	<u>US 23</u>	
H.C.	<u>ROUSOS</u>	WEATHER	<u>CLOUDY</u>	COUNTY	<u>WOOD</u>	
R.C.	<u>GABLE</u>	TEMP.	<u>62°</u>	TOWNSHIP	<u>FREEDOM</u>	
	<u>HOMAN</u>			SECTION	<u>24</u>	
				T	<u>5</u>	R
					<u>N</u>	E

TYPE MONUMENT BRASS MON
 ON SURFACE - ~~BELOW~~ 2"
~~LEFT~~ - PAV'T - ~~RIGHT~~ ON
12.5 TO RT EDGE PAVEMENT
 S.L.M. 794+37.86



Grid: Northing: 627247.283 Easting: 1717042.588

RECORD: PI
 BRASS MON
 $\Delta=0^{\circ}-01' RT$
 794+36.97
 PT "A" NEWREF43
 SET PKS & WASHERS
 4-14-92, MB
 GPS SHOTS REFA43,
 REFB43, FD SHANKS
 11-30-12, SAH
 NEWREF43, NEWREFA43
 FD MON BOX W/ 3/4" IPIN
 10-17-16, JLL



O.D.O.T. DISTRICT 2 SURVEY OFFICE

PERSONNEL

REFERENCE NO. 43 A

SHEET 6 OF 12

NOTES VAN DUSEN

DATE 7/24/91

ROUTE US 23

H.C. VAN DUSEN

WEATHER CLEAR

COUNTY WOOD

R.C. BARNHISEL

TEMP. 70°

TOWNSHIP FREEDOM

KUSZ

SECTION 24

T 5 N R 12 E

TYPE MONUMENT PT.A= BRASS MON.

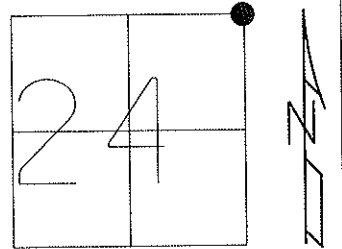
ON SURFACE - ~~BELOW~~ ON

LEFT - C PAV'T - RIGHT ON

12.5' TO RT EDGE PAVEMENT

S.L.M. PT.A= 794+70

Grid: Northing: _____ Easting: _____

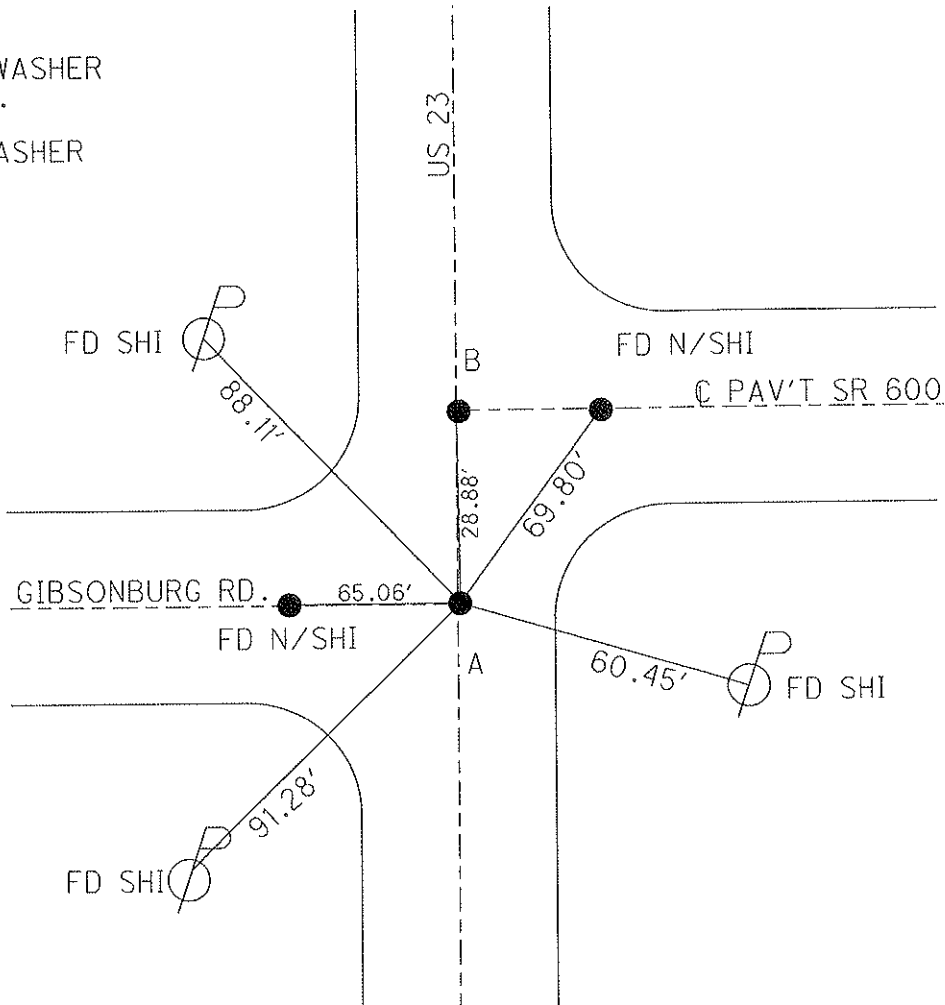


P.I. BRASS MON., PT.A
 $\Delta = 0^\circ - 01' \text{ RT.}$
 794+36.97
 RECORD:

SET P.K. & WASHER
 4/14/92 M.B.

FD P.K. & WASHER
 9/9/08

SV 2122
 2/2/09



O.D.O.T. DISTRICT 2 SURVEY OFFICE

PERSONNEL

REFERENCE NO. 43

SHEET 6 OF 11

NOTES VAN DUSEN

H.C. VAN DUSEN

R.C. BARNHISEL

KUSZ

DATE 7-24-91

WEATHER CLEAR

TEMP. +70°F

ROUTE US 23

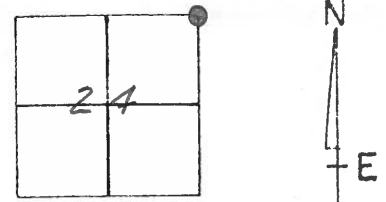
COUNTY WOOD

TOWNSHIP FREEDOM

SECTION 24

T.5 N R.12 E.

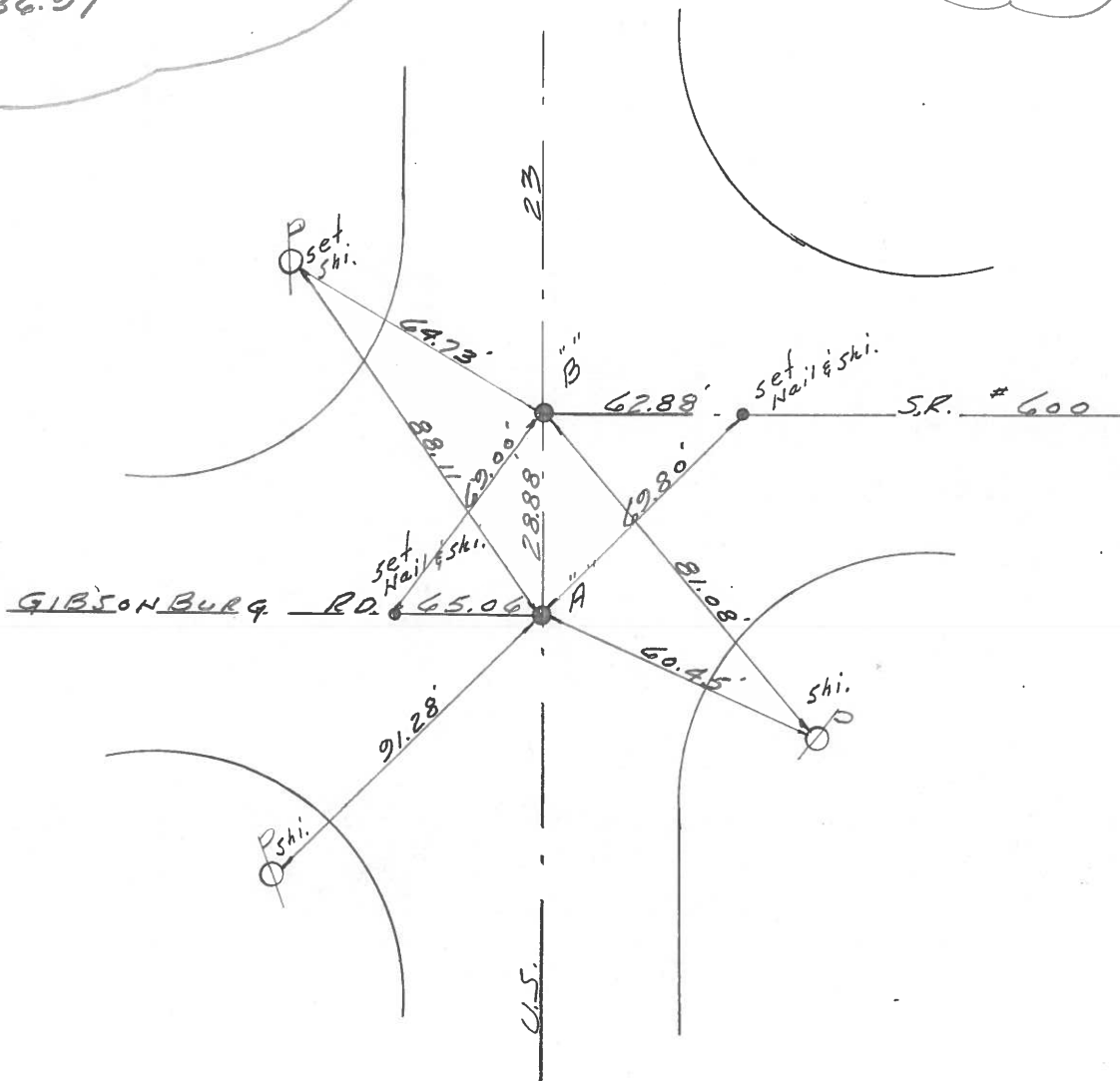
	PT A''	PT B''
TYPE MONUMENT	<u>BRASS MON.</u>	<u>RR SPK.</u>
ON SURFACE -	<u>BELOW</u>	<u>yes</u>
LEFT - & PAV'T. - RIGHT	<u>yes</u>	<u>yes</u>
<u>12.5 TO RT. EDGE PAVEMENT</u>		
S.L.M. PT A''	<u>794+70</u>	PT B''



P.I. BRASS MON.
 $\Delta = 0^\circ - 01' RT.$ PT. "A"
794+36.97

SET P.K.'S & WASHERS
 4-14-92
 MB

RECORD:



ODOT. DISTRICT 2 SURVEY OFFICE

SHEET _____ OF _____

County WOOD ^{U.S.} ~~S.R.~~ 23

Date 2-6-70

Township FREEDOM

Weather FAIR

Section 24

Temp. 40°

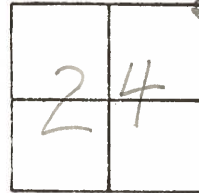
T5N, R12E

Personnel SCHEIDER

MOSSER

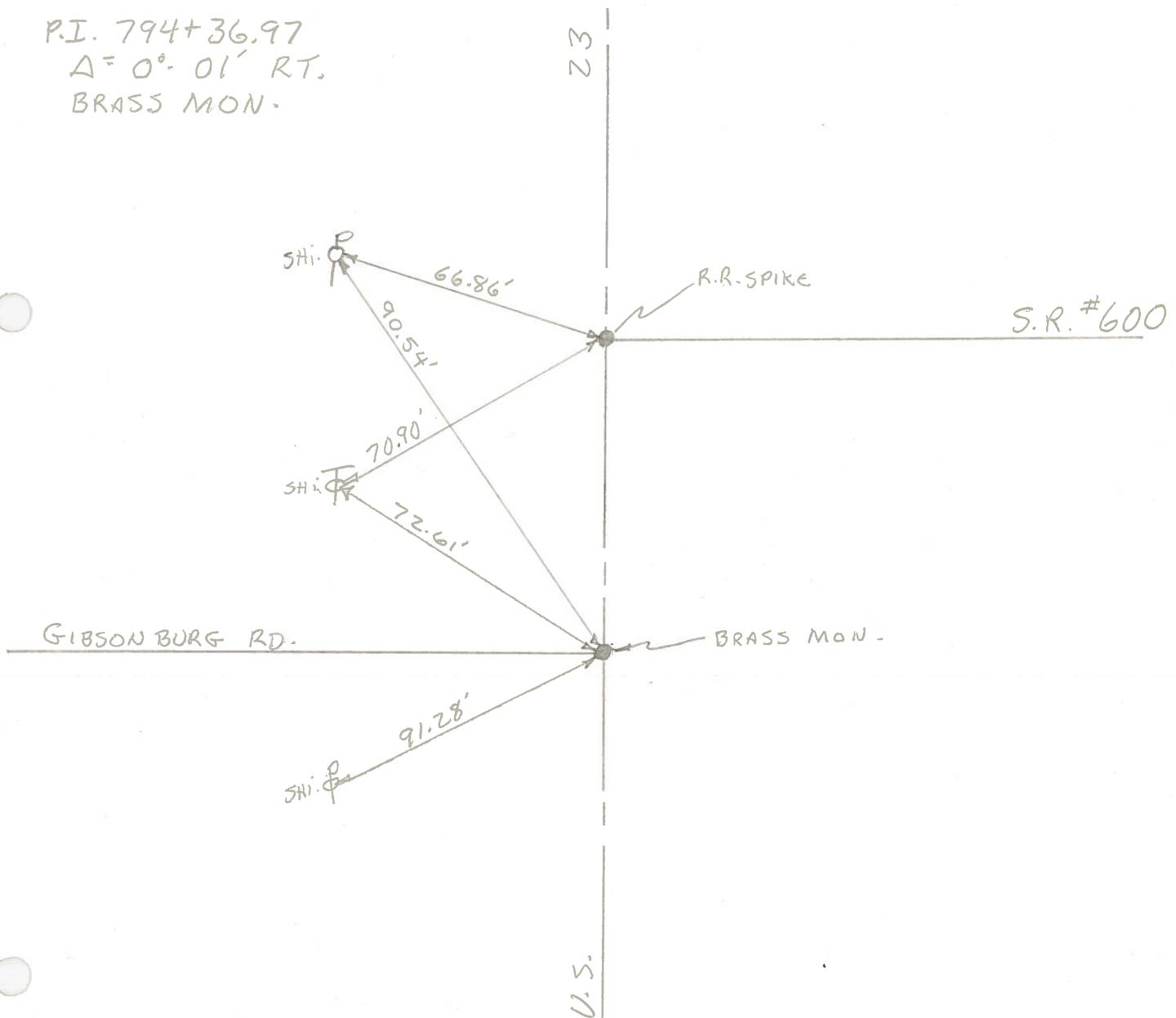
BARBOUR

POTTS



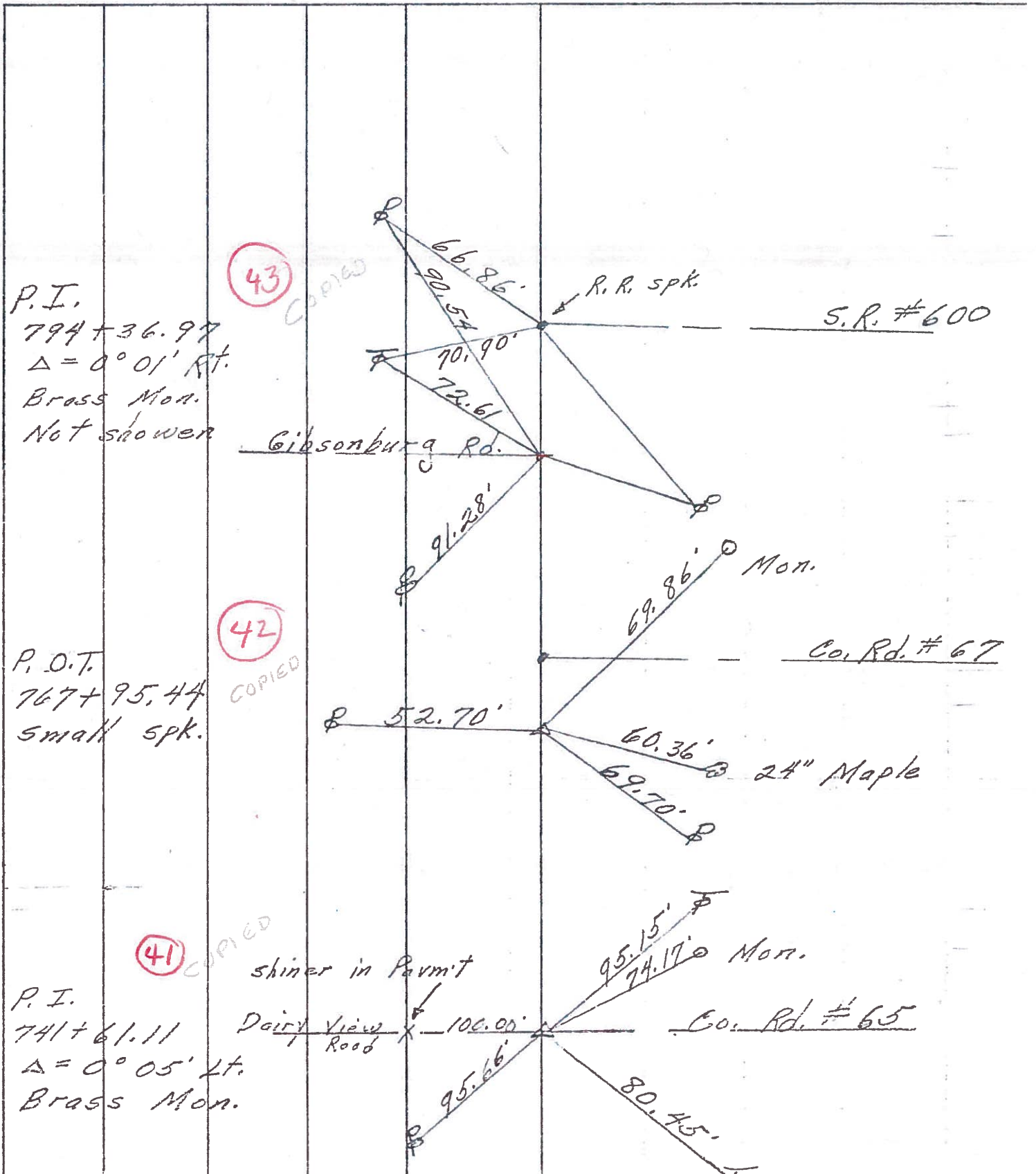
#43

P.I. 794+36.97
 $\Delta = 0^\circ - 01' RT.$
BRASS MON.



PERSONNEL	TITLE	PERSONNEL	TITLE	COUNTY	DATE
<u>Schneider</u>				<u>Sqa-Wood</u>	<u>2-6-70</u>
<u>Mosser</u>				S. R. <u>23</u>	WEATHER <u>Fair</u>
<u>Barbour</u>				SEC. <u>U.S. #6 - U.S. #20</u>	TEMP. <u>40°</u>
<u>Potts</u>					

DESCRIPTION Ties for Control Points JOB NO. _____



P.I.
794+36.97
 $\Delta = 0^\circ 01' \text{ Rt.}$
Brass Mon.
Not shown

P.O.T.
767+95.44
small spk.

P.I.
741+61.11
 $\Delta = 0^\circ 05' \text{ Lt.}$
Brass Mon.

PERSONNEL TITLE PERSONNEL TITLE

COUNTY Sandusky DATE Nov - 1966

ties
Co.

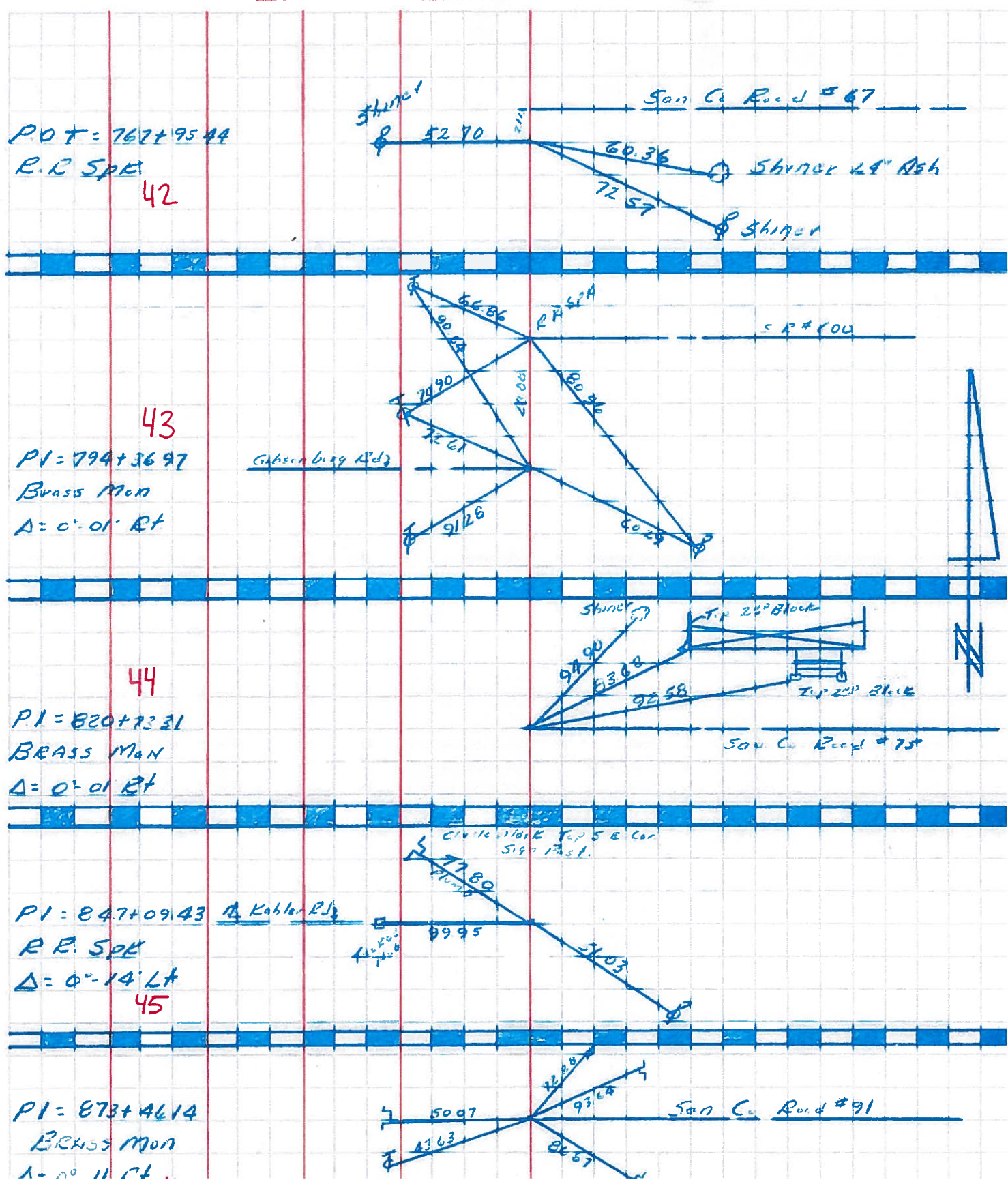
S. R. # 199 WEATHER
From us. 6 to Sugar Ridge Rd.
SEC. Madison Twp TEMP.

DESCRIPTION Control Point ties & R/W JOB NO.

LEFT	CENTER LINE	RIGHT
Point set with Govt. offset 3.30'		<u>Ref. Mon.</u> S.E. 52.41 N.E. 68.36
Kahler Rd. R.R. spl. set on top of stone		S.E. 50.63 N.E. 70.92
Co. Rd # 75 Brass Pin with "+" on top		N.E.-S.W. cor. House (Porch) 83.70 N.W. 43.97 S.E. 59.74 S.W. "+" cut in 72" R.C.P. 53.89 N.W. "+" cut in 72" R.C.P. 58.38
Point set with Govt. offset 18.15		N.E.-S.W. cor. House (Porch) 95.9 E. 56.40 N.W. 53.83
S.R. # 600 R.R. spl.		W. 69.52 S.S.E. 80.12 E.N.E. 15' Conc. Post 102.47 N.E. 15" conc. cor. Post 89.16
Gibsonburg Rd. Brass Pin with "+" on top		W.N.W. 71.41 S.E. 59.82
Co. Rd. # 67 Brass Pin with "+" cut in top 21.12'		S.E.-N.W. cor. House 95.80 S.S.E. - 90.53 E.N.E. - 54.89 S.S.W. 62.54
R.R. spl. on top stone		S.E.-N.W. cor. House 78.69 N.N.E. 69.90 S.S.E. 71.12 S.W. - 48.83

PERSONNEL	TITLE	PERSONNEL	TITLE	COUNTY	DATE	WEATHER	TEMP
Sworders	Notes	Rice		San. Woo	6/29/60	Cloudy	+80
Cramin				S. R. #199			
Hulcomb				SEC 45+6 North to U.S. #20			
Sege							

DESCRIPTION Ties For Cont. L Points JOB NO. _____



PERSONNEL	TITLE	PERSONNEL	TITLE
		COUNTY	Wood
		DATE	10-15-54
		S. R.	#199
		WEATHER	SWORDEN -58
		SEC.	C&D
		TEMP.	

DESCRIPTION	LEFT	CENTER LINE	RIGHT	JOB NO.
Notes: New Mobara mon. set at all points				
S.R. #199 - Wood - Sandusky Co. line			S.E. to S.W. pt. S.W. wing (Kimball Rd.)	20.20
S.E. cor. sec. 25 & N.E. Cor.			N.E. to N.W. pt. N.W. wing	33.70
sec. 26, Freedom Twp. Wood Co.			N.W. to shiner in P.P.	45.24 .31
	#391			
E 1/4 post sec. 25 Freedom twp.			E.N.E. to maple	28.97 ⁸⁸
	40		N.E. to maple	45.30
	#392		S.E. to maple	39.60 .55
S.E. cor. sec. 24 & N.E. Cor. sec. 25, Freedom twp.			S.W. to Conc. mon.	31.85
Dairy View Rd.			S.E. to Conc. mon. ^{Hwy} Mon.	34.85' 25.02
	41		N.W. to shiner in Cor. post	33.53' 33.82
	#393		S.W. to shiner in P.P.	35.90
	#394		No ties	
S.E. cor. sec. 13 & N.E. cor. sec. 24			S.E. to S.E. pt. of S. Hdwl.	23.60
S.R. 600 Gibsonburg Rd. & S.R. 199			S.W. to Conc. R/W mon.	38.55' 38.61
	43		S.E. Shiner in P.P.	44.20' 44.18
	#395		N.N.E. Conc. anchor post	25.55' 62.46
	1958	#240 on S.E. 600 Sanco Fd. R. R. Spk.	W.N.W. Shi. P.P.	72.69
		S.R. #199 & 600 East Sworden	N.W. T. Pole	34.39'
			N.E. conc. H. Post	39.71'
			W. N.W. R. Pole	70.97'
			S.W. conc. R/W Mon.	60.82'
Near E 1/4 post sec. 13 Freedom twp.			W. to R/W mon	29.92' 30.06
Sandusky Co. Rd 75 Wood Co.			W. to Hickory	39.77' 39.80
	44		E.N.E. to X in E. end N. curb bridge	31.33' 31.33
	#396		E.S.E. to X in E. end S. curb br.	38.4