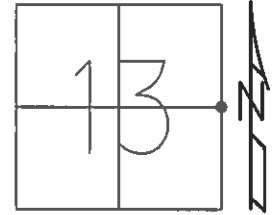


O.D.O.T. DISTRICT 2 SURVEY OFFICE (USE ONLY)

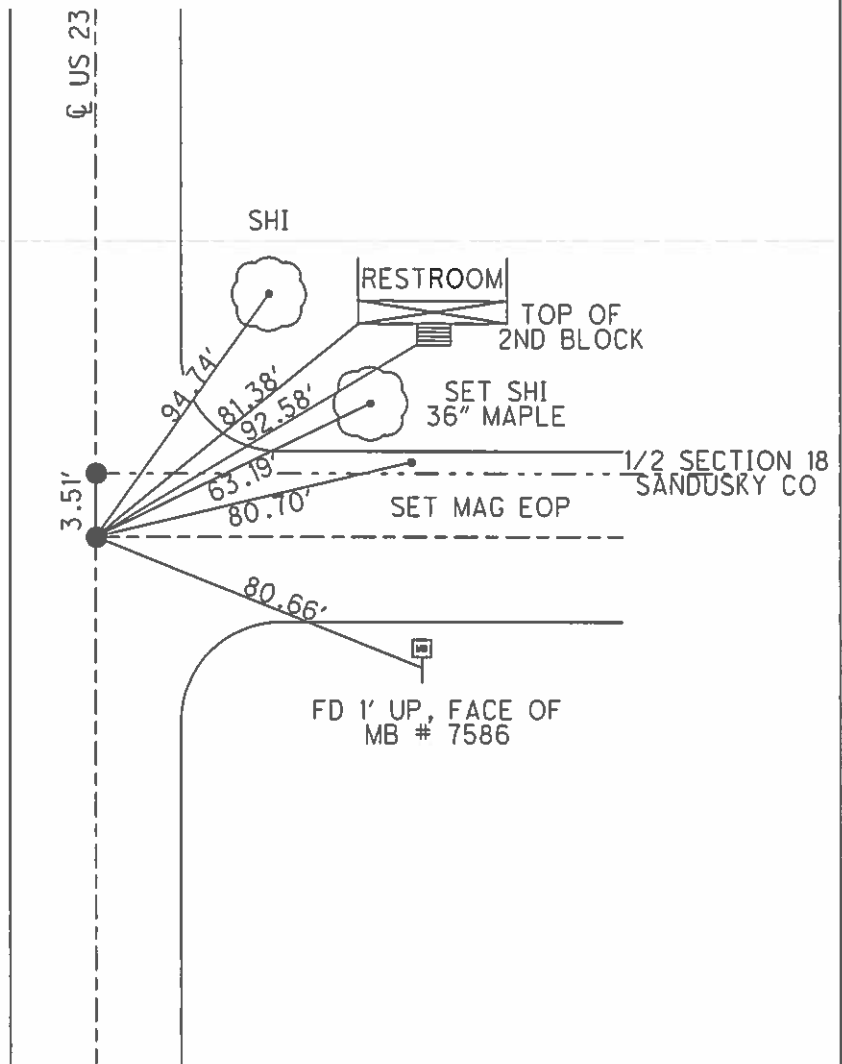
PERSONNEL	REFERENCE NO.	44A	SHEET	13	OF	22
NOTES	RHOADES	DATE	4-21-14	ROUTE	US 23	
H.C.	ROUSOS	WEATHER	CLOUDY	COUNTY	WOOD	
R.C.	GABLE	TEMP.	74°	TOWNSHIP	FREEDOM	
	HOMAN			SECTION	13	
				T	5	N
				R	12	E

TYPE MONUMENT BRASS MON
~~ON SURFACE~~ - BELOW 4"
~~LEFT~~ - Q PAV'T - ~~RIGHT~~ ON
11.2 TO W EDGE PAVEMENT
 S.L.M. 820+73.99



Grid: Northing: 629882.421 Easting: 1717111.810

RECORD: PI
 820+73
 Δ=0°-01' RT
 BRASS MON
 SET PKS & WASHERS
 4-14-92, MB
 POINT "B" (NEWREFB44)
 FD SPK AT SURFACE
 (ORIGIN UNKNOWN)
 GPS SHOTS REFA44,
 REFB44, FD
 11-30-12, SAH
 NEWREFA44
 FD MON BOX W/
 STONE USED HIGH POINT
 NEWREFB44
 FD MAG NAIL



O.D.O.T. DISTRICT 2 SURVEY OFFICE

PERSONNEL

REFERENCE NO. 44

SHEET 7 OF 11

NOTES VAN DUSEN

H.C. VAN DUSEN

R.C. BARNHISEL

KUSZ

DATE 7-24-91

WEATHER CLEAR

TEMP. +70° F.

ROUTE U.S. 23

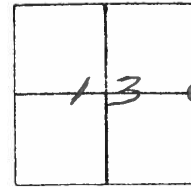
COUNTY WOOD

TOWNSHIP FREEDOM

SECTION 13

T.5 N R.12 E.

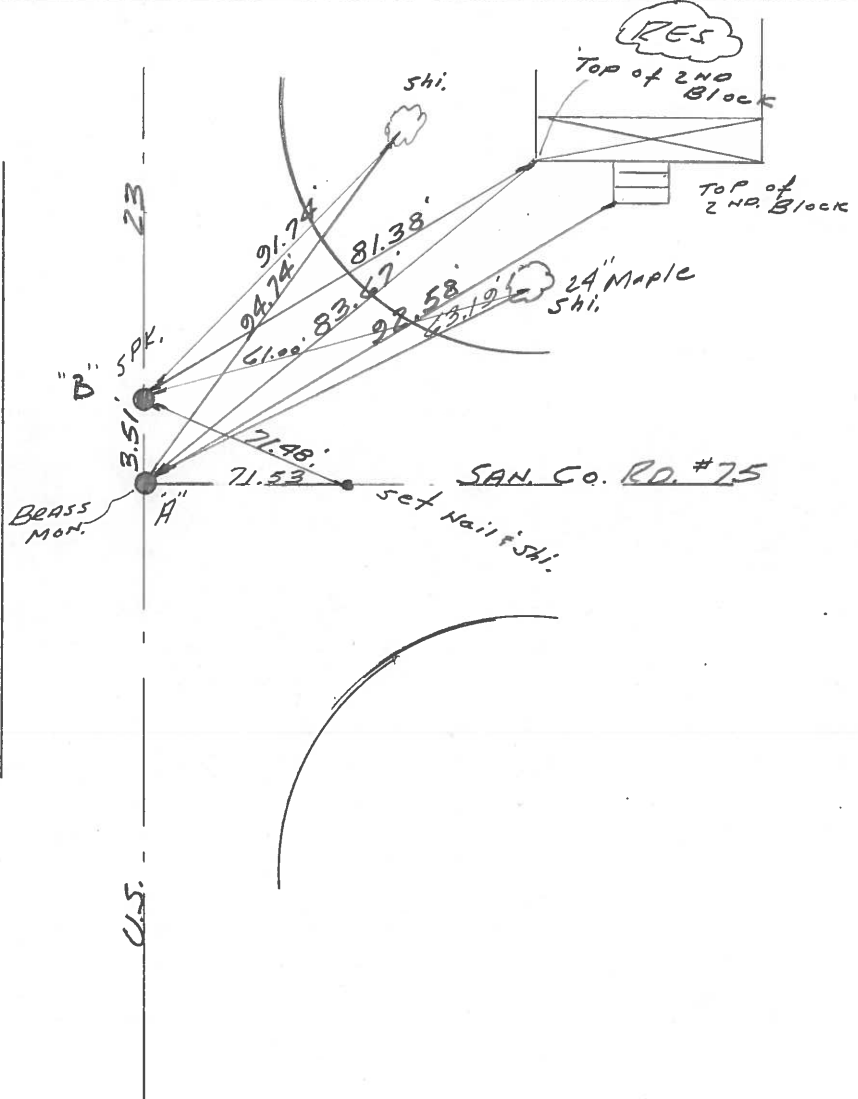
TYPE MONUMENT BRASS MON.
 ON SURFACE - BELOW yes
 LEFT- & PAV'T. - RIGHT yes
11.2 TO W. EDGE PAVEMENT
 S.L.M. 821+07 BRASS MON.



P.I. 820+73.31 RECORD!
 $\Delta = 0^\circ - 01' RT.$
 BRASS MON.

SET P.K.'S WASHERS
 4-14-92
 MB

POINT "B"
 FD SPK AT SURFACE
 ORIGINAL UNKNOWN



PERSONNEL	TITLE	PERSONNEL	TITLE
		COUNTY	Wood
		S. R.	#199
		SEC.	C&D
		DATE	10-15-54
		SWORDEN	-58
		WEATHER	
		TEMP.	

DESCRIPTION	LEFT	CENTER LINE	RIGHT	JOB NO.
Notes: New Mobara mon. set at all points				
S.P. #199-Wood-Sandusky Co. line			S.E. to S.W. pt. S.W. wing (Kimball Rd.)	20.20
S.E. cor. sec. 25 & N.E. Cor.			N.E. to N.W. pt. N.W. wing	33.70
sec. 26. Freedom Twp. Wood Co.			N.W. to shiner in P.P.	45.25 .31
	#391			
E 1/4 post sec. 25 Freedom twp.			E.N.E. to maple	28.97 ⁸⁸
	40		N.E. to maple	45.30
	#392		S.E. to maple	39.60 .55
S.E. cor. sec. 24 & N.E. Cor. sec. 25. Freedom twp. Dairy View Rd.			S.W. to Conc. mon.	31.85
	41		S.E. to Conc. mon, ^{Hwy} Mon.	34.85 25.02
	#393		N.W. to shiner in Cor. post	33.53 33.82
			S.W. to shiner in P.P.	35.90
	#394		No ties	
S.E. cor. sec. 13 & N.E. cor. sec. 24 S.R. 600 Gibsonburg Rd. & S.R. 199			S.E. to S.E. pt. of S. Hdwl.	23.60
	43		S.W. to Conc. Blw Mon.	38.55' 38.61
	#395		S.E. Shiner in P.P.	44.20' 44.18
			N.N.E. Conc. anchor post	25.55' 62.40
	1958	#240 on S.E. 600 F.d. R. R. Spk. ^{Sanco}	W.N.W. Sh. P.P.	72.69
		S.R. #199 & 600 East Sworden	N.W. T. Pole	34.39'
			N.E. conc. H. post	39.71'
			W.N.W. P. Pole	70.97'
			S.W. conc. Blw Mon.	60.82'
Near E 1/4 post sec. 13 Freedom twp. Sandusky Co. Rd 75 Wood Co.			W. to R/W Mon	29.92' 30.00
	44		W. to Hickory	39.77' 39.80
	#396		E.N.E. to X in E. end N. curb bridge	31.33' 31.33
			E.S.E. to X in E. end S. curb br.	38.4