

O.D.O.T. DISTRICT 2 SURVEY OFFICE (USE ONLY)

PERSONNEL \_\_\_\_\_ REFERENCE NO. 44B SHEET 14 OF 22  
 NOTES RHOADES DATE 4-21-14 ROUTE US 23  
 H.C. ROUSOS WEATHER CLOUDY COUNTY WOOD  
 R.C. GABLE TEMP. 74° TOWNSHIP FREEDOM  
 \_\_\_\_\_ HOMAN \_\_\_\_\_ SECTION 13  
 \_\_\_\_\_ T 5 N R 12 E

TYPE MONUMENT \_\_\_\_\_ RRSPK \_\_\_\_\_

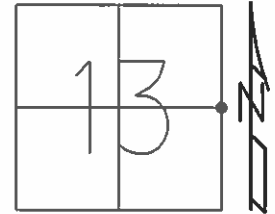
~~ON SURFACE~~ - BELOW \_\_\_\_\_ 2" \_\_\_\_\_

~~LEFT~~ - Q PAV'T - ~~RIGHT~~ \_\_\_\_\_ ON \_\_\_\_\_

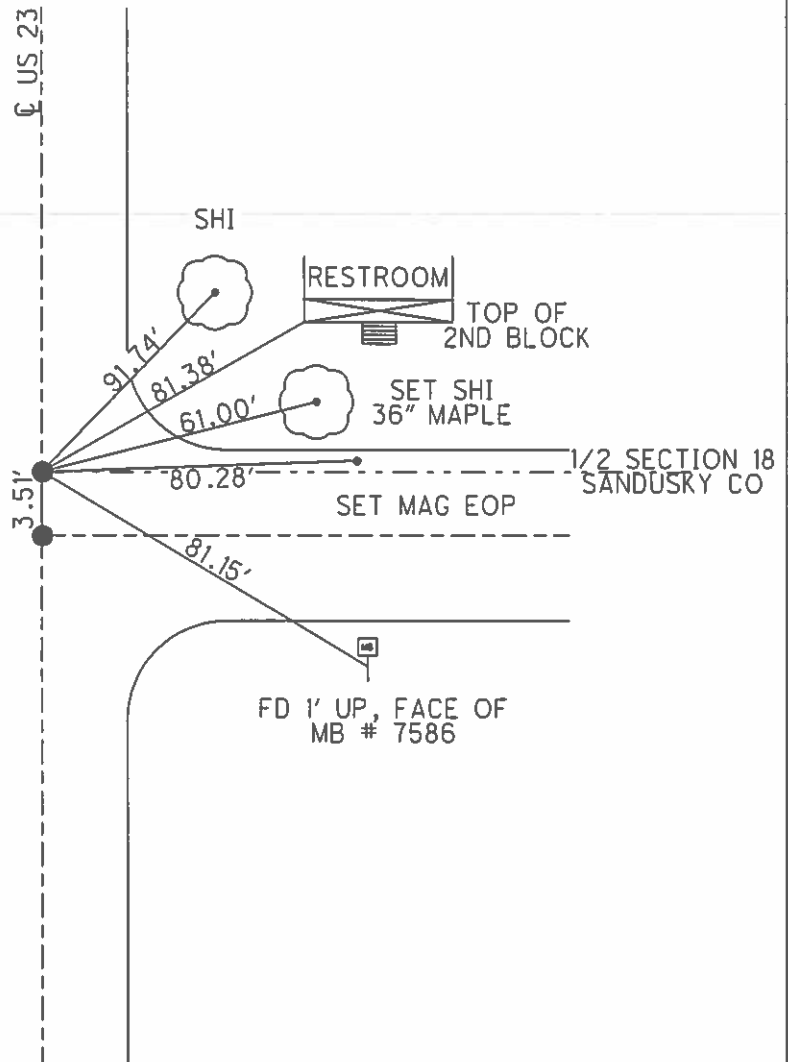
11.2 TO W EDGE PAVEMENT

S.L.M. \_\_\_\_\_ 820+77.51 \_\_\_\_\_

Grid: Northing: 629885.936 Easting: 1717111.906



RECORD: PI  
 820+73  
 $\Delta=0^{\circ}-01'$  RT  
 BRASS MON  
 SET PKS & WASHERS  
 4-14-92, MB  
 POINT "B" (NEWREFB44)  
 FD SPK AT SURFACE  
 (ORIGIN UNKNOWN)  
 GPS SHOTS REFA44,  
 REFB44, FD  
 11-30-12, SAH  
 NEWREFA44  
 FD MON BOX W/  
 STONE USED HIGH POINT  
 NEWREFB44  
 FD MAG NAIL



# O.D.O.T. DISTRICT 2 SURVEY OFFICE

PERSONNEL

REFERENCE NO. 44

SHEET 7 OF 11

NOTES VAN DUSEN

H.C. VAN DUSEN

R.C. BARNHISEL

KUSZ

DATE 7-24-91

WEATHER CLEAR

TEMP. +70° F.

ROUTE U.S. 23

COUNTY WOOD

TOWNSHIP FREEDOM

SECTION 13

T.5 N R.12 E.

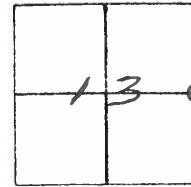
TYPE MONUMENT <sup>PT A</sup> BRASS MON.

ON SURFACE - BELOW yes

LEFT- & PAV'T. - RIGHT yes

11.2 TO W. EDGE PAVEMENT

S.L.M. 821+07 BRASS MON.



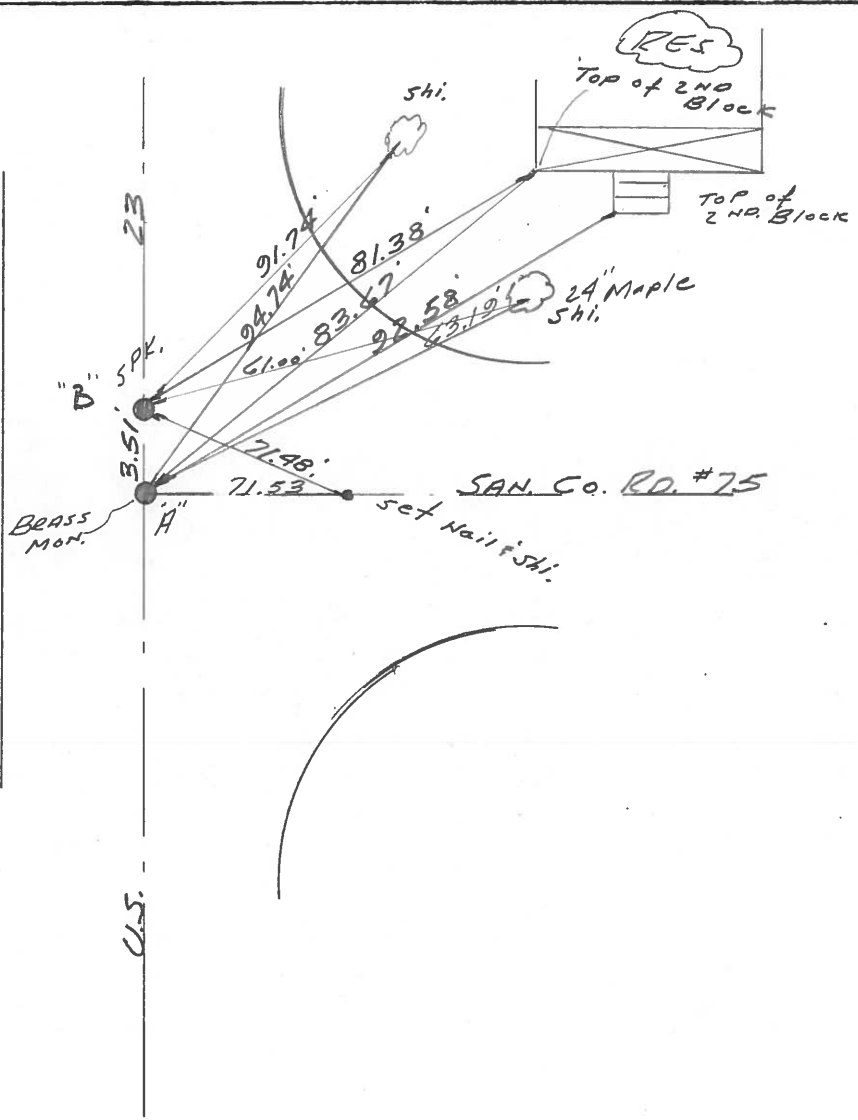
P.I. 820+73.31 RECORD!

A = 0°-01 RT.

BRASS MON.

SET P.K.'S WASHERS  
 4-14-92  
 MB

POINT "B"  
 FD SPK AT SURFACE  
 ORIGINAL UNKNOWN



County WOOD <sup>U.S.</sup> S.R. 23

Date 2-6-70

Township FREEDOM

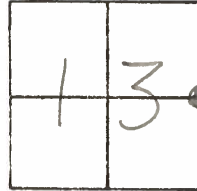
Weather FAIR

Section 13

Temp. 40°

T5N, R12E

Personnel SCHNEIDER  
MOSSER  
BARBOUR  
POTTS



#44

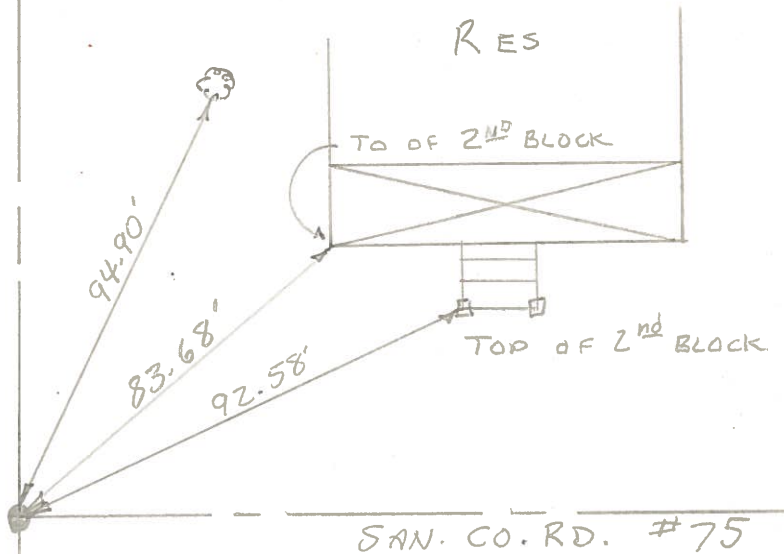
P.I. 820+73.31

$\Delta = 0^\circ - 01' RT.$

BRASS MON.

23

U.S.

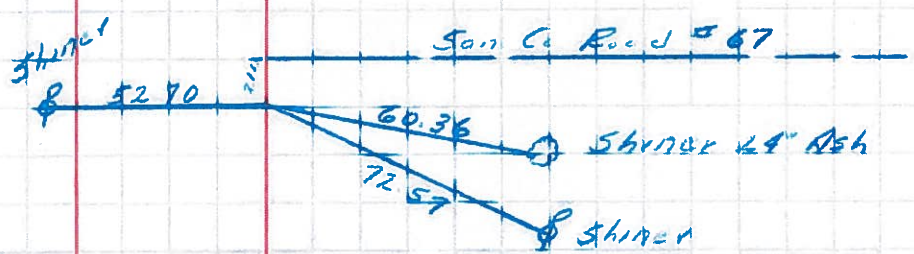


PERSONNEL	TITLE	PERSONNEL	TITLE
<u>Swordest</u>	<u>Notes</u>	<u>Rice</u>	
<u>Cronin</u>			
<u>Hulcombe</u>			
<u>Sege</u>			

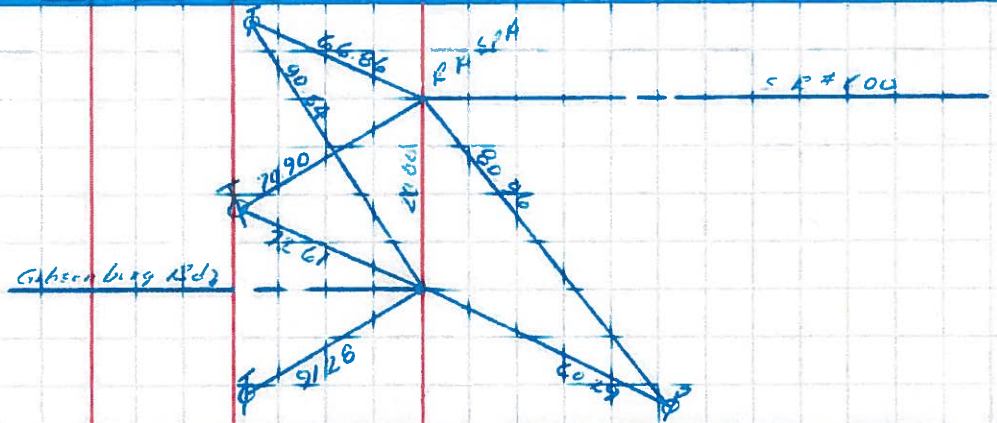
COUNTY San Woo DATE 6/29/60  
 S. R. #199 WEATHER Cloudy  
 SEC. U.S.#6 North + U.S.#20 TEMP. +80

DESCRIPTION Ties for Control Points JOB NO. \_\_\_\_\_  
 LEFT CENTER LINE RIGHT

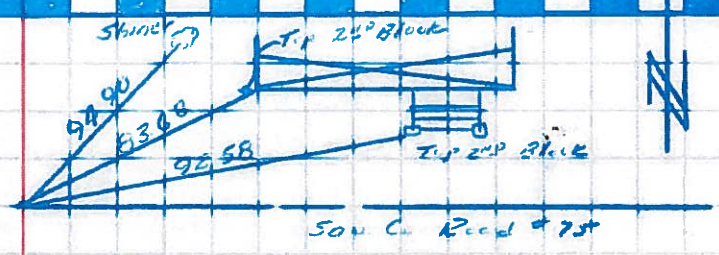
POT = 767+95.44  
 R.R. SPK  
 42



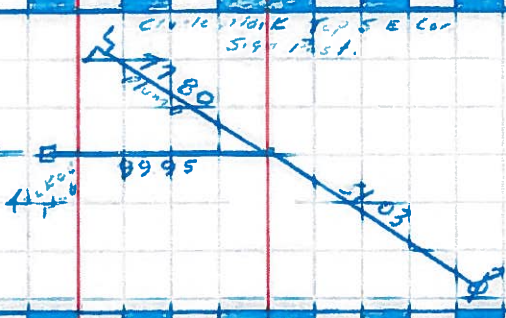
PI = 794+36.97  
 Brass Man  
 Δ = 0°-01' Rt  
 43



PI = 820+73.31  
 BRASS Man  
 Δ = 0°-01' Rt  
 44



PI = 847+09.43  
 R.R. SPK  
 Δ = 0°-14' Lt  
 45



PI = 873+46.14  
 BRASS Man  
 Δ = 0°-11' Lt

