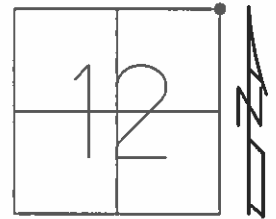


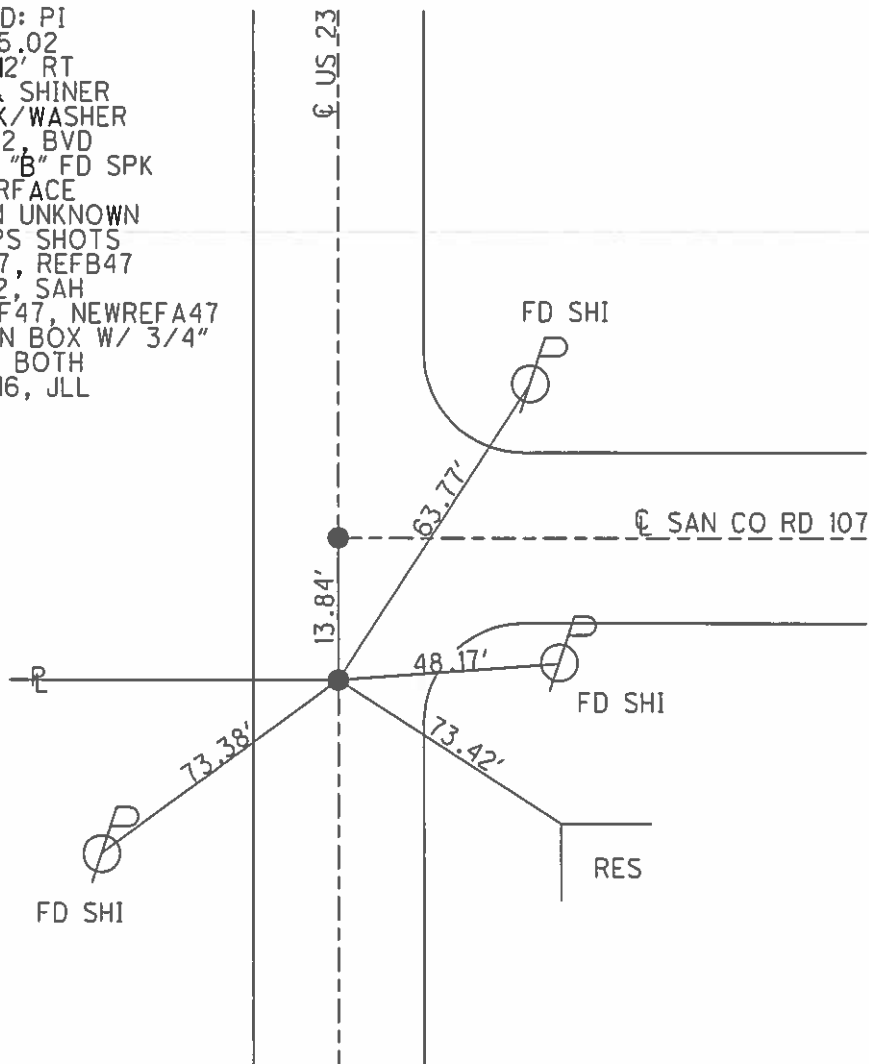
O.D.O.T. DISTRICT 2 SURVEY OFFICE (USE ONLY)

PERSONNEL \_\_\_\_\_ REFERENCE NO. 47 SHEET 20 OF 22  
 NOTES HOMAN DATE 4-22-14 ROUTE US 23  
 H.C. ROUSOS WEATHER CLOUDY COUNTY WOOD  
 R.C. GABLE TEMP. 60° TOWNSHIP FREEDOM  
 \_\_\_\_\_ SECTION 12  
 \_\_\_\_\_ T 5 N R 12 E

TYPE MONUMENT \_\_\_\_\_ SPK \_\_\_\_\_  
 ON SURFACE - ~~BELOW~~ \_\_\_\_\_ ON \_\_\_\_\_  
~~LEFT~~ - Q PAV'T - ~~RIGHT~~ \_\_\_\_\_ ON \_\_\_\_\_  
11.9 TO W EDGE PAVEMENT  
 S.L.M. \_\_\_\_\_ 899+82.02  
 Grid: Northing: 637801.888 Easting: 1717310.768



RECORD: PI  
 899+95.02  
 $\Delta=0^{\circ}-12'$  RT  
 NAIL & SHINER  
 SET PK/WASHER  
 4-15-92, BVD  
 POINT "B" FD SPK  
 AT SURFACE  
 ORIGIN UNKNOWN  
 FD, GPS SHOTS  
 REFA47, REFB47  
 12-3-12, SAH  
 NEWREF47, NEWREFA47  
 FD MON BOX W/ 3/4"  
 IPIN @ BOTH  
 10-17-16, JLL



# O.D.O.T. DISTRICT 2 SURVEY OFFICE

PERSONNEL

REFERENCE NO. 47

SHEET 10 OF 11

NOTES Van Dusen

H.C. Barnhisel

R.G. KUSZ

DATE 7-19-91

WEATHER Clear

TEMP. +90°F

ROUTE US 23

COUNTY Wood

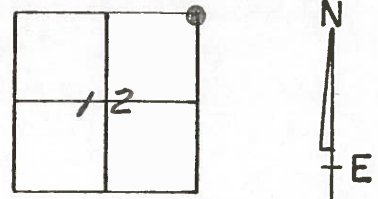
TOWNSHIP Freedom

SECTION 12

T 5 N R 12 E

"A"      "B"

TYPE MONUMENT PK Nail - SPK.  
 ON SURFACE - BELOW yes - yes  
~~LEFT~~ - ~~PAV'T.~~ - ~~RIGHT~~ yes - yes  
11.9 TO W. EDGE PAVEMENT  
 S.L.M. 900+38



P.I. 899+95.02  
 $\Delta = 0^\circ - 12'$  RT. Record  
 Nail & Shiner

SET PK/WASHER  
 4-15-92  
 BVD

POINT "B"  
 Ed SPK at surface  
 ORIGIN UNKNOWN

