

O.D.O.T. DISTRICT 2 SURVEY OFFICE (USE ONLY)

PERSONNEL \_\_\_\_\_

REFERENCE NO. 52

SHEET 5 OF 13

NOTES SCHNEIDER

DATE 2/11/70

ROUTE US 23

H.C. MOSSER

WEATHER CLOUDY

COUNTY WOOD

R.C. BARBOUR

TEMP. 35°

TOWNSHIP TROY

POTTS

SECTION 36

T 6 N R 12 E

TYPE MONUMENT N/A

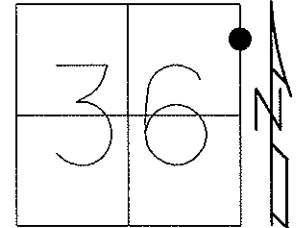
ON SURFACE - BELOW \_\_\_\_\_

LEFT - Q PAV'T - RIGHT \_\_\_\_\_

- TO - EDGE PAVEMENT

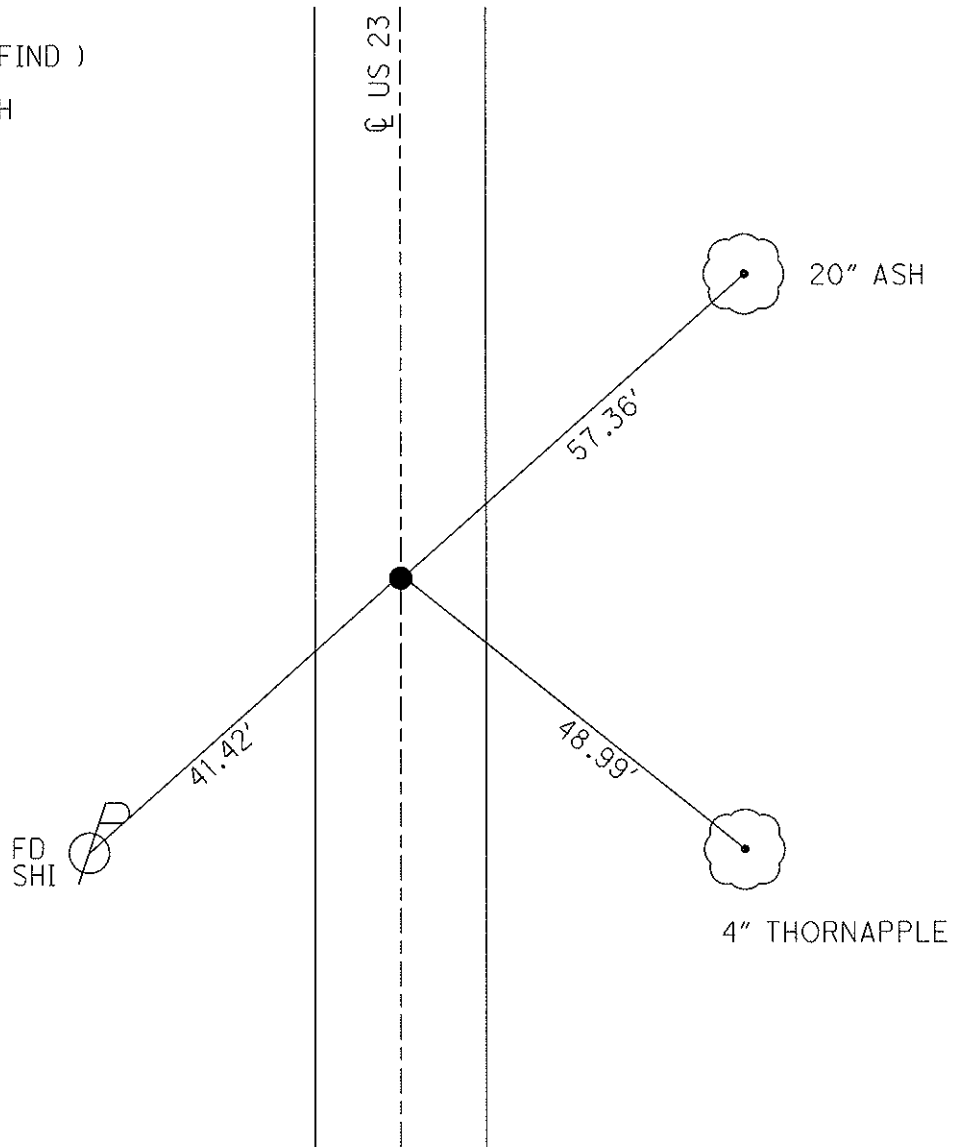
S.L.M. 991+96.13

Grid: Northing: \_\_\_\_\_ Easting: \_\_\_\_\_



NOTE:  
P.O.T. ( DID NOT FIND )

DNF, 8/10/10, SAH



O.D.O.T. DISTRICT 2 SURVEY OFFICE

SHEET \_\_\_\_\_ OF \_\_\_\_\_

County WOOD U.S. 23  
S.R.

Date 2-11-70

Township TROY

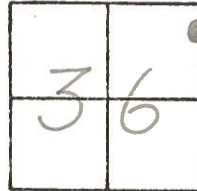
Weather CLOUDY

Section 36

Temp. 35°

TEN, RIZE

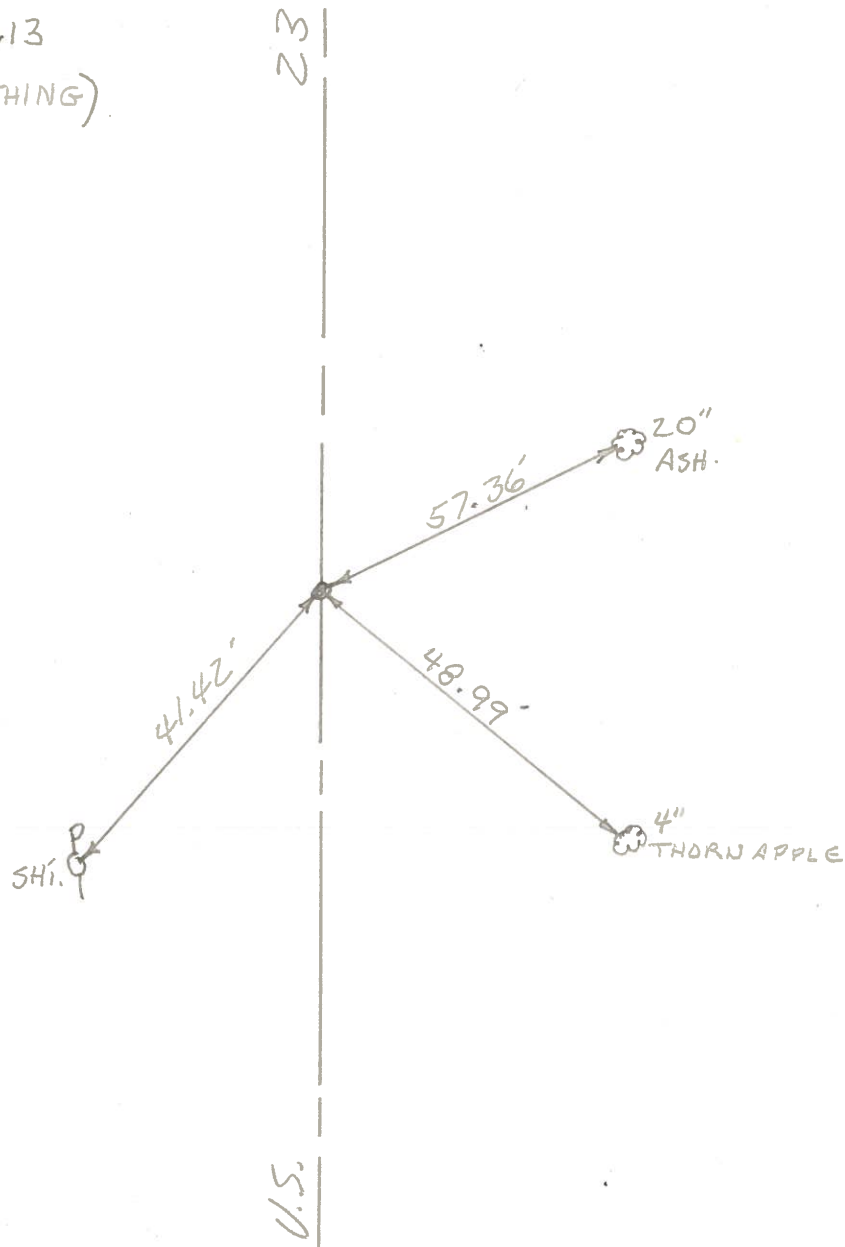
Personnel SCHNEIDER  
MOSSER  
BARBOUR  
POTTS



#52

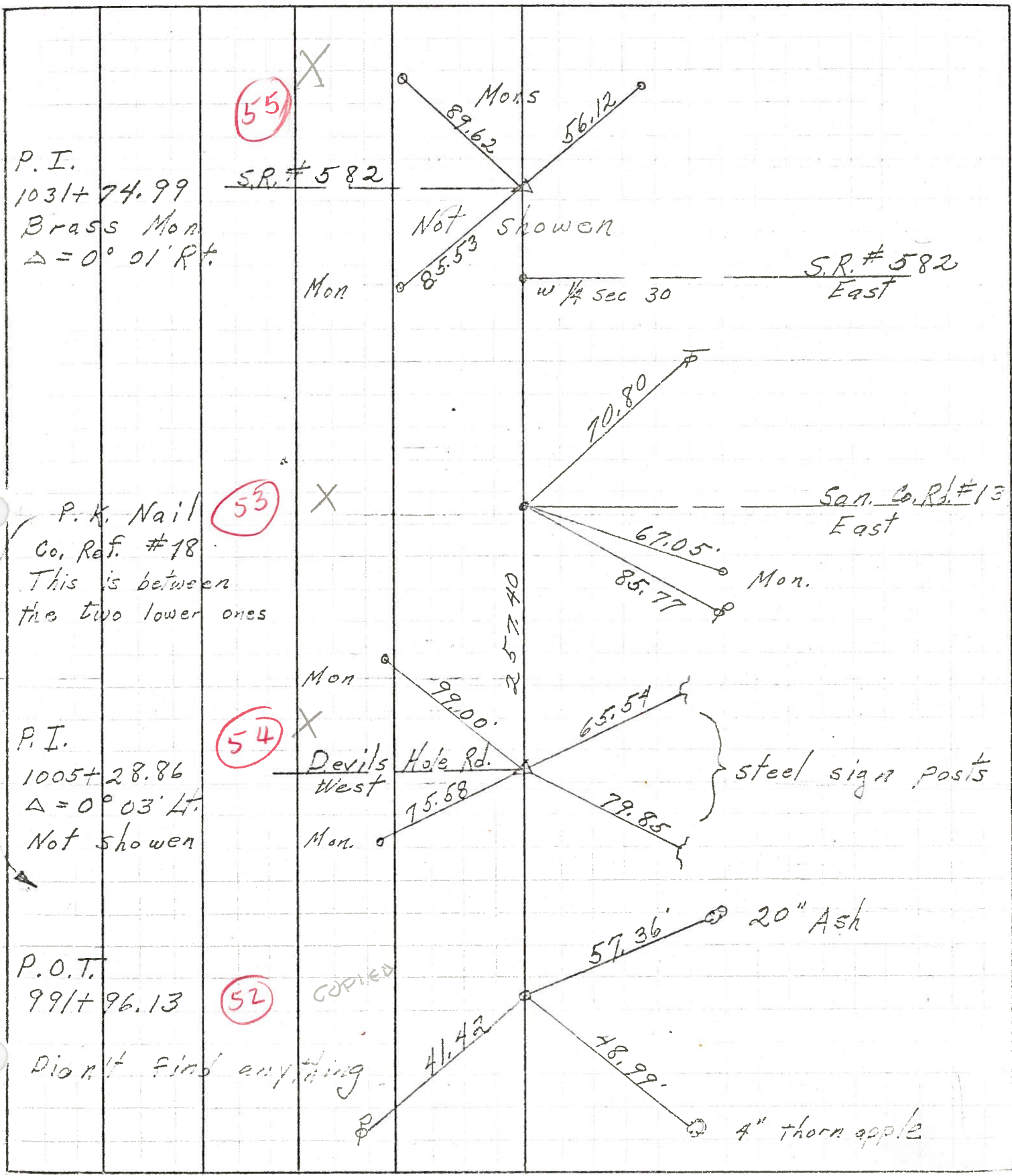
P.O.T. 991+96.13

(DIDN'T FIND ANYTHING)



PERSONNEL	TITLE	PERSONNEL	TITLE	COUNTY	DATE
Schneider				San. Wood	2-11-70
Mosser				S. R. 23	WEATHER Cloudy
Barbour				SEC. U.S. #6 to U.S. #20	TEMP. 35°
Oatts					

DESCRIPTION Ties for Control Points JOB NO. \_\_\_\_\_



PERSONNEL TITLE PERSONNEL TITLE COUNTY San-Woo DATE 10/9/60  
 S. R. # 199 WEATHER \_\_\_\_\_  
 SEC. U.S. #6 North To U.S. #20 TEMP. \_\_\_\_\_

DESCRIPTION Ties For Control Points JOB NO. \_\_\_\_\_  
 LEFT CENTER LINE RIGHT

