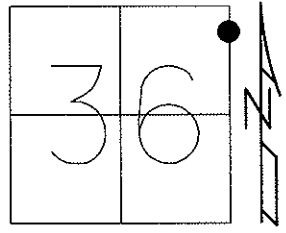


O.D.O.T. DISTRICT 2 SURVEY OFFICE (USE ONLY)

PERSONNEL _____ REFERENCE NO. 53 SHEET 6 OF 13
 NOTES HUSS DATE 4/20/12 ROUTE US 23
 H.C. CANTERBURY WEATHER CLEAR COUNTY WOOD
 R.C. HOMAN TEMP. 62° TOWNSHIP TROY
 _____ SECTION 36
 _____ T 6 N R 12 E

TYPE MONUMENT P.K.NAIL (DNF)
 ON SURFACE - BELOW _____
 LEFT - ☉ PAV'T - RIGHT _____
 _____ TO _____ EDGE PAVEMENT
 S.L.M. 1003+42

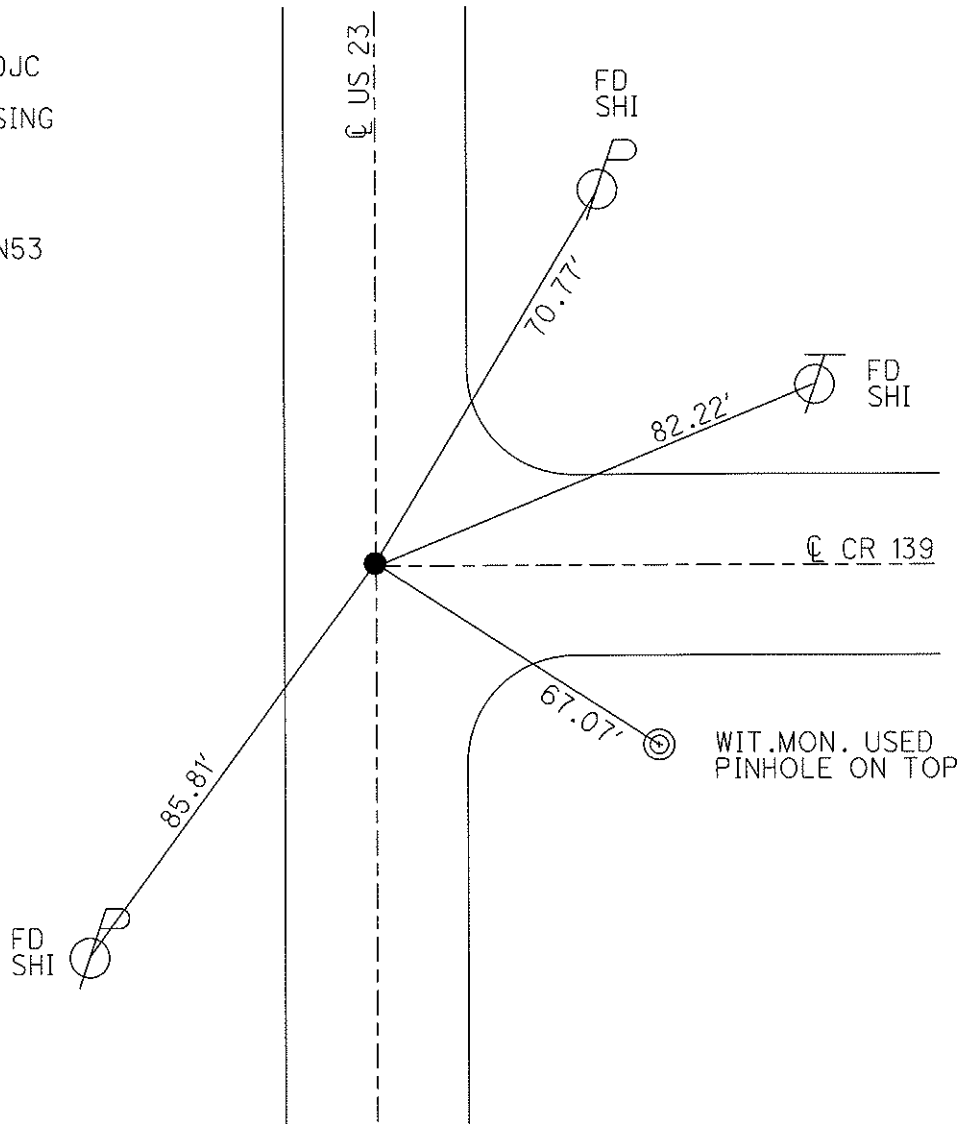


Grid: Northing: 648074.3 Easting: 1717564.0

FD P.K.NAIL 3 1/2"
 DEEP. 6/15/90, DJC

DNF. WILL SET USING
 EXISTING TIES.
 8/10/10, SAH

SET MAG/WASHER
 3/12/13. GPS, FIN53
 3/13/13, MRC



O.D.O.T. DISTRICT 2 SURVEY OFFICE

PERSONNEL

REFERENCE NO. 53

SHEET 4 OF 10

NOTES 1. Stone

H.C. D. Curtis

DATE 3 May 90

ROUTE US#23

R.C. J. Householder

WEATHER Cloudy

COUNTY Wood

TEMP. 60°

TOWNSHIP Troy

SECTION 36

T R

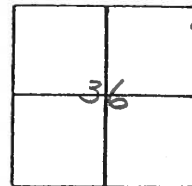
TYPE MONUMENT PK Nail

ON SURFACE - BELOW 3" deep

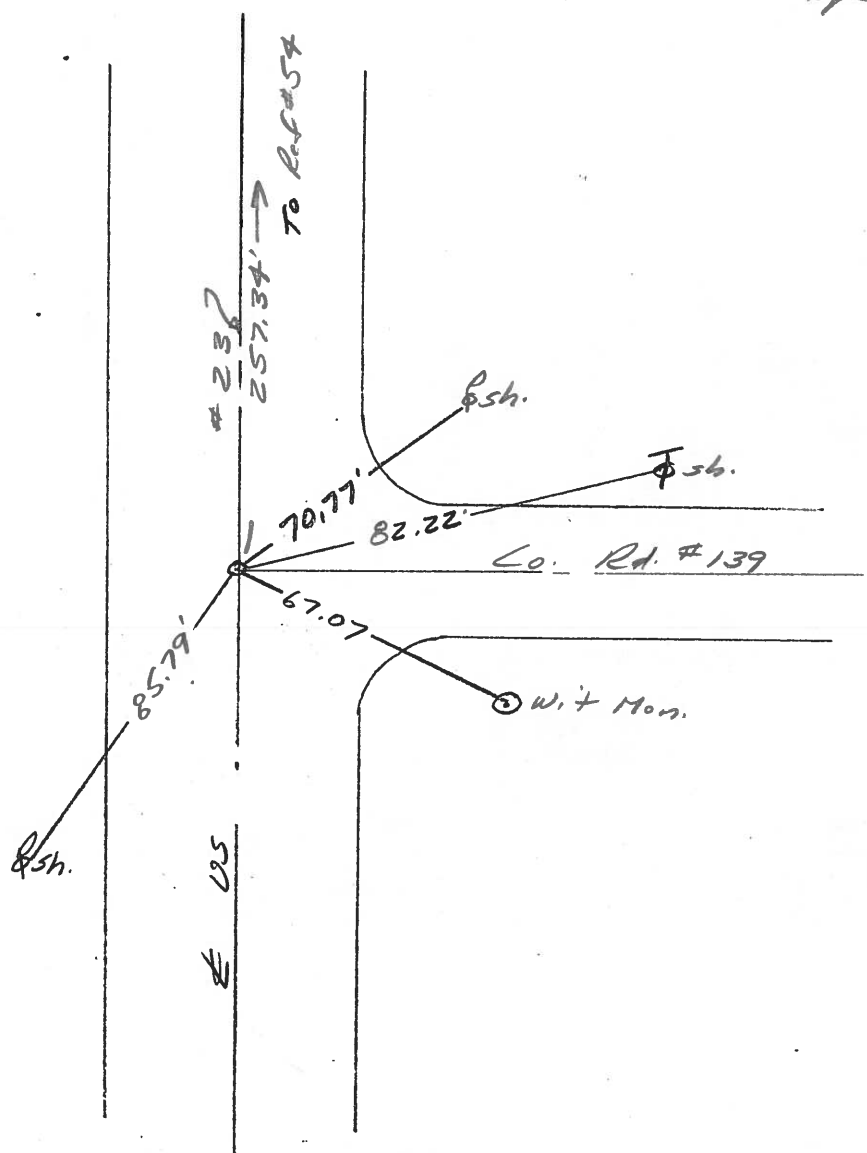
LEFT - & PAV'T. - RIGHT

TO EDGE PAVEMENT

S.L.M. 1003+42



FOUND P.K. NAIL 3 1/2" DEEP
6-15-90
DJC



PERSONNEL TITLE PERSONNEL TITLE

COUNTY San. Wood DATE 2-11-70

Schneider _____

S. R. 23 WEATHER Cloudy

Mosser _____

SEC. U.S. #6 to U.S. #20 TEMP. 35°

Barbour _____

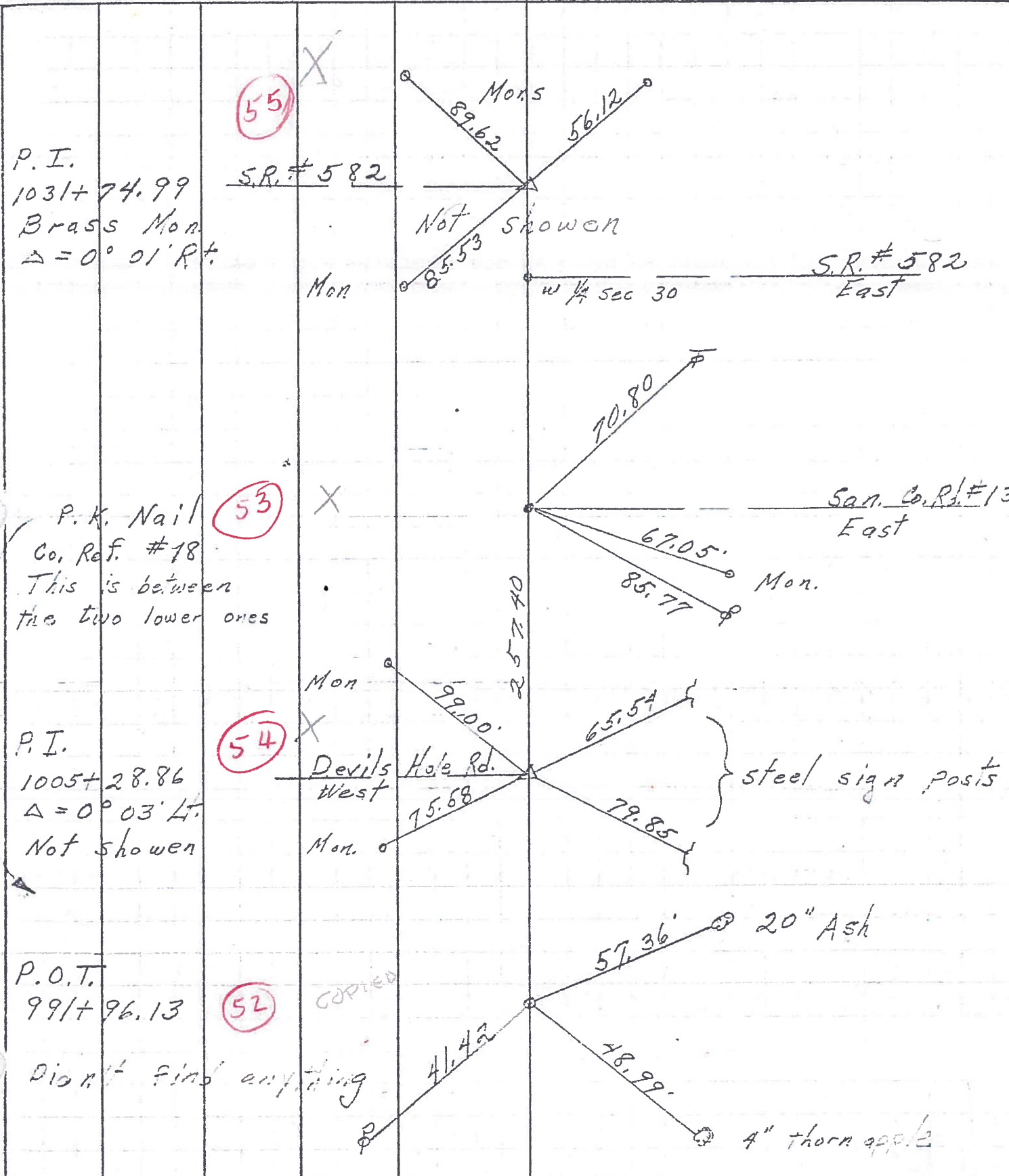
Potts _____

DESCRIPTION Ties for Control Points JOB NO. _____

LEFT

CENTER LINE

RIGHT



P.I.
1031+74.99
Brass Mon.
Δ = 0° 01' R+

P.K. Nail
Co. Ref. #18
This is between
the two lower ones

P.I.
1005+28.86
Δ = 0° 03' L.
Not shown

P.O.T.
991+96.13

Didn't find anything

COPIED

S.R. #582
East

San. Co. Rd. #13
East

Devils Hole Rd.
West

steel sign posts

20" Ash

4" thorn apple

PERSONNEL TITLE PERSONNEL TITLE COUNTY Sandusky DATE 11/17/66
 Recorded in stone record S. R. # 199 WEATHER _____
 March 1965 SEC Sugar Ridge Rd to Off Coline TEMP. _____

DESCRIPTION Control Point Ties & R/W - Woodville Twp JOB NO. _____
 LEFT CENTER LINE RIGHT

1" Iron pipe 6' below surface 1964 Dean Morgan Ref Mons S.E. 47.64' - S.W. 32.30' - N.W. 31.91'					Co. Ref #6 Rd 165 N.W. Cor 18
Brass Mon with "t" on top over stone Ref Mons E-62.44' N.W. 64.73' - S.W. 71.04'				227.70 w 1/4 sec 19 Co. Ref #12	Point set with Govt Twp offset 227.70 Jan 1966 Co. Ref #11 - Joseph Rd West Ref Mons N.E. 76.33' S.E. 81.83' W.S.W. 49.49'
Brass Mon with "t" on top over stone Ref. Mons. N.E. 67.21' S.E. 67.43' - W. 42.96'				244.00 Co. Rd #159 East Co. Ref #14	Point set with Govt. Twp Offset 244.00 Jan. 1965 Co. Ref #13 Ref. Mons. N.E. 65.72' - S.E. 79.81'
Brass Mon with "t" on top, over stone Ref. Mons S.W. 85.53' N.W. 89.62' N.E. 56.12'				w 1/4 sec 30	Co. Ref #15 Inters. S.R. 582 West E 1/2 sec 25
Brass Mon with "t" on top over stone Ref Mens N.W. 99.00' W.S.W. 75.58'				257.40 Co. Rd #139 East Co. Ref #18	Point set with Govt Twp Offset 257.40 Jan. 1965 Co. Ref #17 Devils Hole Rd West Ref. Mons. ESE 67.05' S.W. 49.43' - N.W. 47.92' (Broken)
P.R. Spk. set over top of stone Ref. Mons ESE 47.45' S.W. 52.47'				128.70 w 1/4 sec 31	Point set with Govt Twp Offset 128.70 a. 1966 Co. Ref #19 Ref. Mons S.E. 57.11' W.S.W. 40.56' N.W.W. 101.81'
Brass Mon with "t" on top over stone Ref. Mons E-43.42' N.W. 76.38' S.W. 83.94'					Co. Ref #21 Sugar Ridge Rd. West Common corner to 4 Twp.