

O.D.O.T. DISTRICT 2 SURVEY OFFICE (USE ONLY)

PERSONNEL _____

REFERENCE NO. 56

SHEET 9 OF 13

NOTES HUSS

DATE 4/20/12

ROUTE US 23

H.C. CANTERBURY

WEATHER CLEAR

COUNTY WOOD

R.C. HOMAN

TEMP. 62°

TOWNSHIP TROY

SECTION 24

T 6 N R 12 E

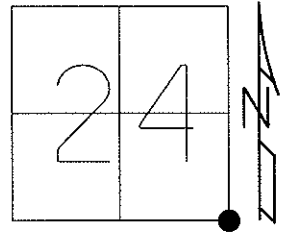
TYPE MONUMENT P.K.NAIL

ON SURFACE - ~~BELOW~~ ON _____

LEFT - Q PAV'T - ~~RIGHT~~ 0.7', 7.5' N. OF E.Q
10.6' TO W. EDGE PAVEMENT

S.L.M. 1055+96.33

Grid: Northing: 653352.20 Easting: 1717655.00



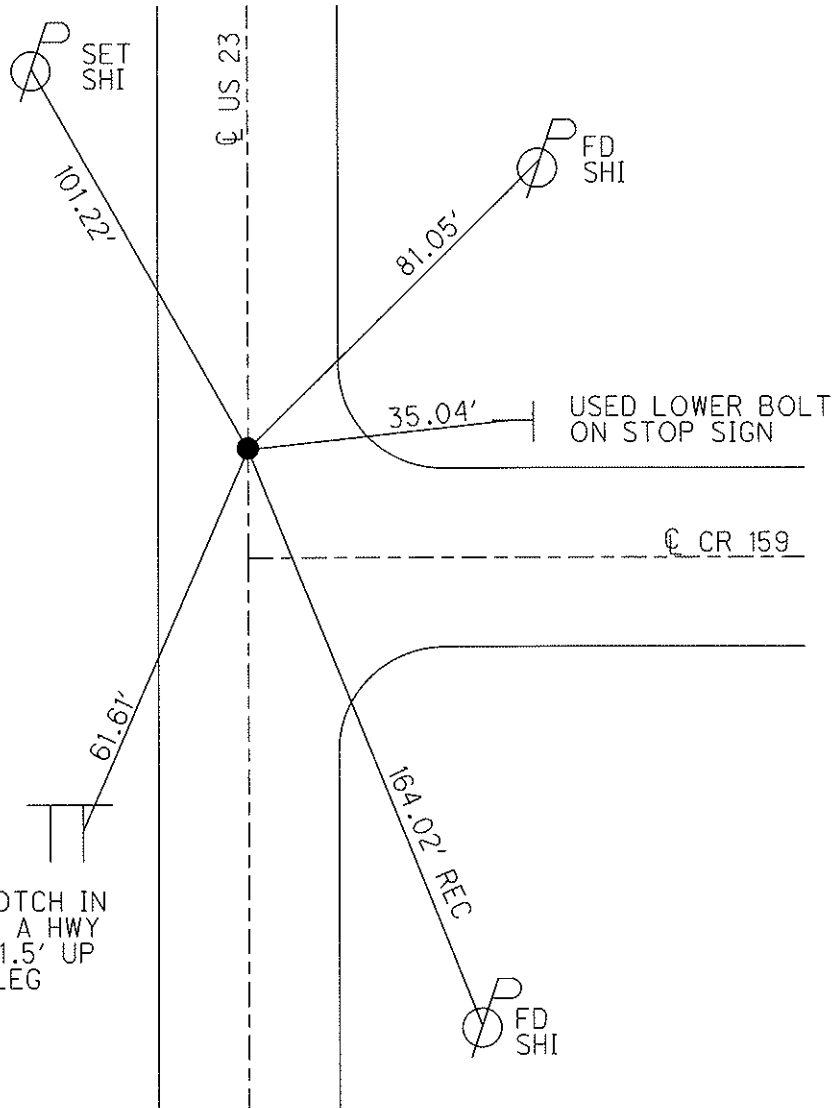
SET P.K.NAIL TO SURFACE. 6/15/90, DJC

FD P.K.NAIL 7/6/10, MC

GPS, CP56 8/10/10, SAH

RESET MAG/WASHER 3/12/13. GPS, FIN56 3/13/13, MRC

NOTE: POINT IS 264.03' TO REF 57.



O.D.O.T. DISTRICT 2 SURVEY OFFICE

PERSONNEL _____

REFERENCE NO. 56

SHEET 7 OF 10

NOTES CURTIS

H.C. T-4

R.G. CREW

DATE 5-9-90

WEATHER CLOUDY

TEMP. 50°

ROUTE US #23

COUNTY WOOD

TOWNSHIP TROY

SECTION 24

T _____ R _____

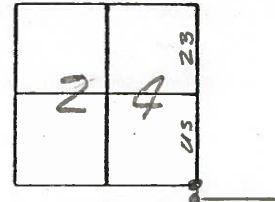
TYPE MONUMENT P.K. NAIL

ON SURFACE - ~~BELOW~~ ON SURFACE

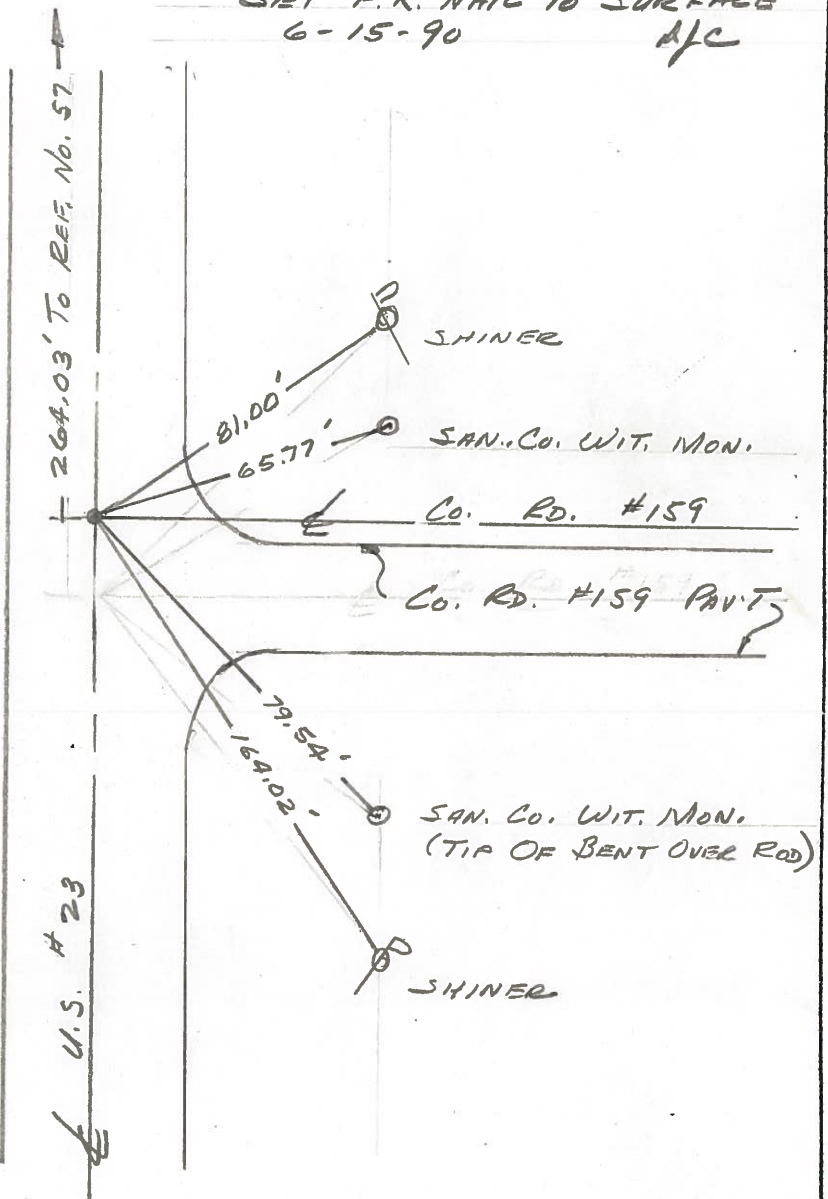
LEFT - ~~PAV'T.~~ PAV'T. - RIGHT PAV'T.

TO _____ EDGE PAVEMENT

S.L.M. 1056+22

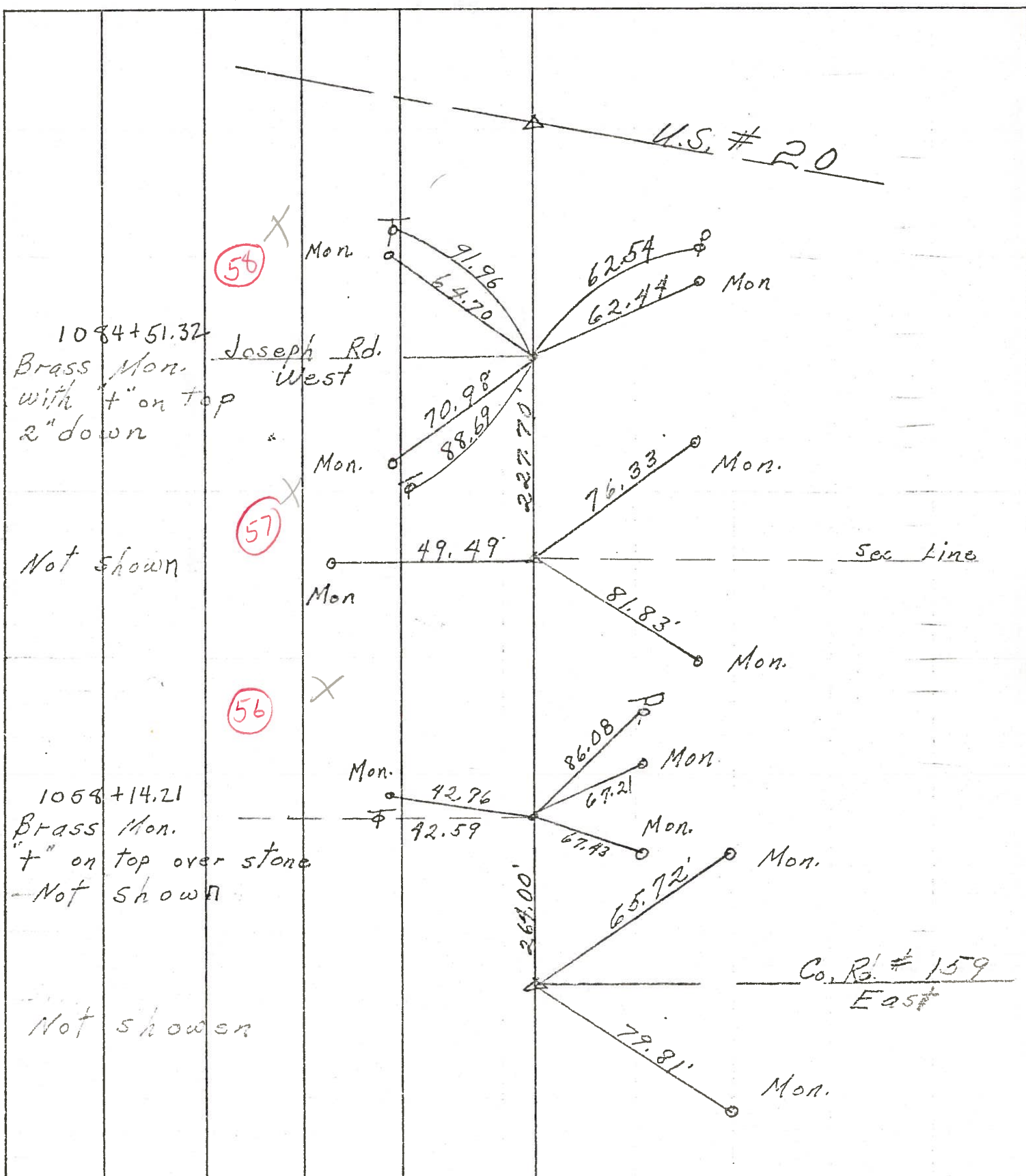


SET P.K. NAIL TO SURFACE
6-15-90
AJC



PERSONNEL	TITLE	PERSONNEL	TITLE	COUNTY	DATE
Schneider				San.-Wood	2-16-70
Mosser				S. R. 23	WEATHER Fair
Barbour				SEC. U.S. # 6 to U.S. # 20	TEMP. 30°
Potts					

DESCRIPTION Ties for Control Points JOB NO. _____



PERSONNEL TITLE PERSONNEL TITLE COUNTY Sandusky DATE 11/17/66
 Recorded in stone record S. R. # 199 WEATHER _____
 March 1965 SEC Sugar Ridge Rd to Off Coline TEMP. _____

DESCRIPTION Control Point Ties & R/W - Woodville Twp JOB NO. _____
 LEFT CENTER LINE RIGHT

1" Iron pipe 6' below surface 1964 Dean Morgan Ref Mons S.E. 47.64' - S.W. 32.30' - N.W. 31.91'					Co. Ref #6 Rd 165 N.W. Cor 18
Brass Mon with "t" on top over stone Ref Mons E-62.44' N.W. 64.73' - S.W. 71.04'				227.70 E 1/4 Sec. 24 Point set with Govt Twp offset 227.70 Jan 1966 Co. Ref #12 Ref Mons N.E. 76.33' S.E. 81.83' W.S.W. 49.49'	Co. Ref #11 - Joseph Rd West
Brass Mon with "t" on top over stone Ref. Mons. N.E. 67.21' S.E. 67.43' - W. 42.96'				244.00 Co. Rd #159 East Co. Ref #14 Point set with Govt. Twp Offset 244.00 Jan. 1965 Ref. Mons. N.E. 65.72' - S.E. 79.81'	Co. Ref #13
Brass Mon with "t" on top, over stone Ref. Mons S.W. 85.53' N.W. 89.62' N.E. 56.12'				257.40 E 1/4 Sec 25 Point set with Govt Twp Offset 257.40 Jan. 1965 Co. Rd #139 East Co. Ref #18 Ref. Mons. ESE 67.05' S.W. 49.43' - N.W. 47.92 (Broken)	Co. Ref #15 Inters. S.R. 582 West
Brass Mon with "t" on top over stone Ref Mons N.W. 99.00' W.S.W. 75.58'				128.70 E 1/4 Sec 36 Point set with Govt Twp Offset 128.70 a. 1966 Co. Ref #20 Ref. Mons S.E. 57.11 W.S.W. 40.56' N.W.W. 101.81'	Co. Ref #17 Devils Hole Rd West
P.R. Spk. set over top of stone Ref. Mons ESE 47.45' S.W. 52.47'					Co. Ref #19
Brass Mon with "t" on top over stone Ref. Mons E-43.42' N.W. 76.38' S.W. 83.94'					Co. Ref #21 Sugar Ridge Rd. West Common corner to 4 Twp.