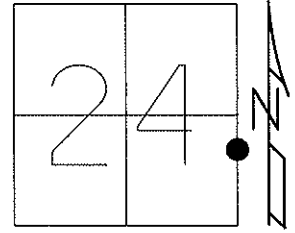


O.D.O.T. DISTRICT 2 SURVEY OFFICE (USE ONLY)

PERSONNEL	REFERENCE NO. <u>57 A</u>	SHEET <u>11</u> OF <u>13</u>
NOTES <u>HUSS</u>	DATE <u>4/20/12</u>	ROUTE <u>US 23</u>
H.C. <u>CANTERBURY</u>	WEATHER <u>WINDY</u>	COUNTY <u>WOOD</u>
R.C. <u>HUSS</u>	TEMP. <u>64°</u>	TOWNSHIP <u>TROY</u>
		SECTION <u>24</u>
		T <u>6</u> N R <u>12</u> E

TYPE MONUMENT P.K.NAIL
 ON SURFACE - ~~BELOW~~ ON
 LEFT - Q PAV'T - ~~RIGHT~~ 0.2'
10.9' TO W EDGE PAVEMENT
 S.L.M. 1082+69.92
 Grid: Northing: 656025.30 Easting: 1717699.00



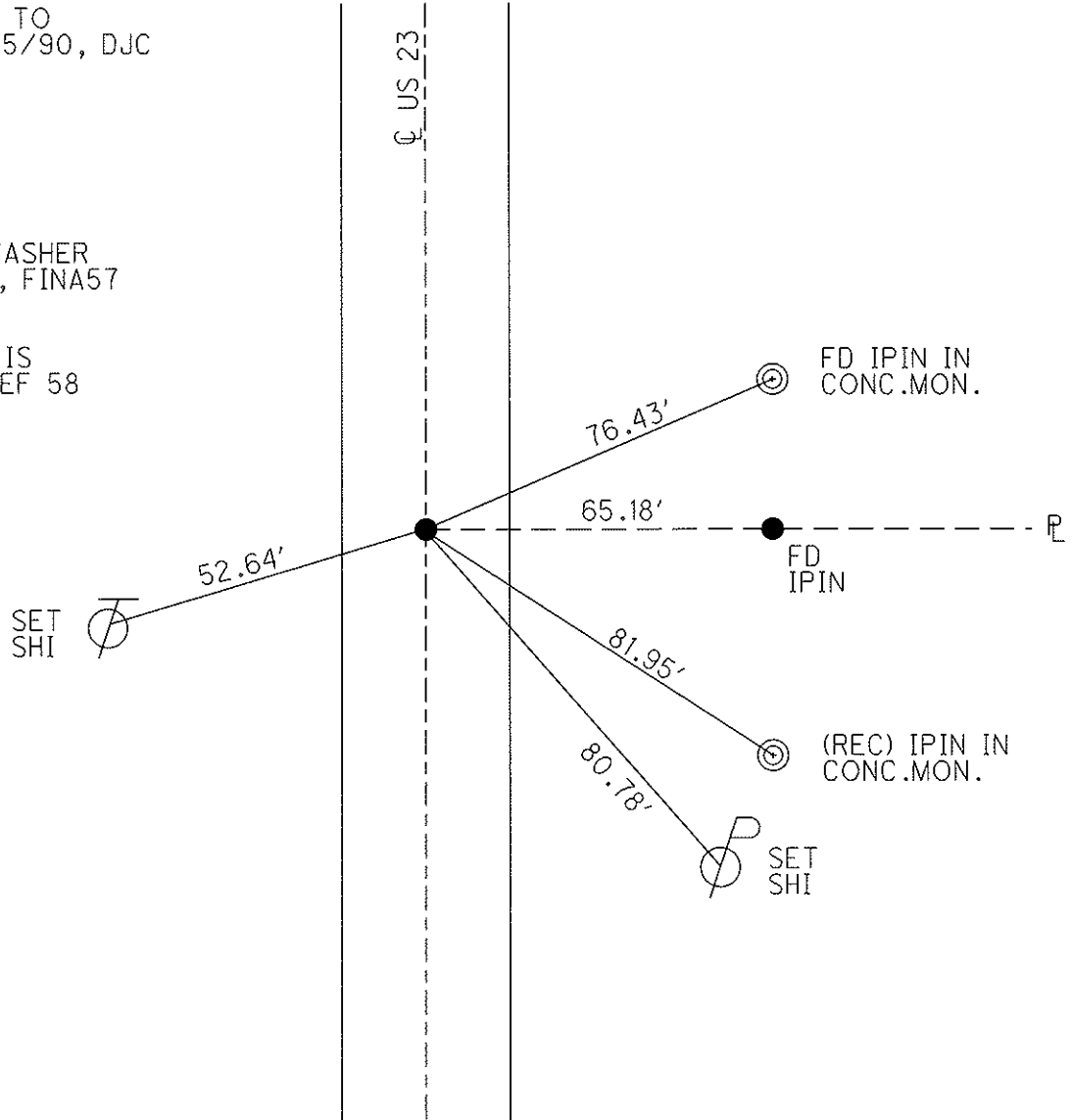
SET P.K.NAIL TO SURFACE. 6/15/90, DJC

FD P.K.NAIL 7/6/10, MC

GPS, CPA57 8/11/10, SAH

RESET MAG/WASHER 3/12/13, GPS, FINA57 3/13/13, MRC

NOTE: POINT IS 227.49' TO REF 58



O.D.O.T. DISTRICT 2 SURVEY OFFICE

PERSONNEL _____

REFERENCE NO. 57-A

SHEET 9 OF 10

NOTES 7 CURTIS

H.C. 5

DATE 5-4-90

ROUTE U.S. #23

R.C. CREW

WEATHER CLOUDY

COUNTY WOOD

TEMP. 50°

TOWNSHIP TROY

SECTION 24

T. _____ R. _____

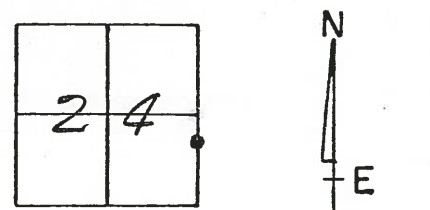
TYPE MONUMENT P.K. NAIL

ON SURFACE - BELOW ON SURFACE

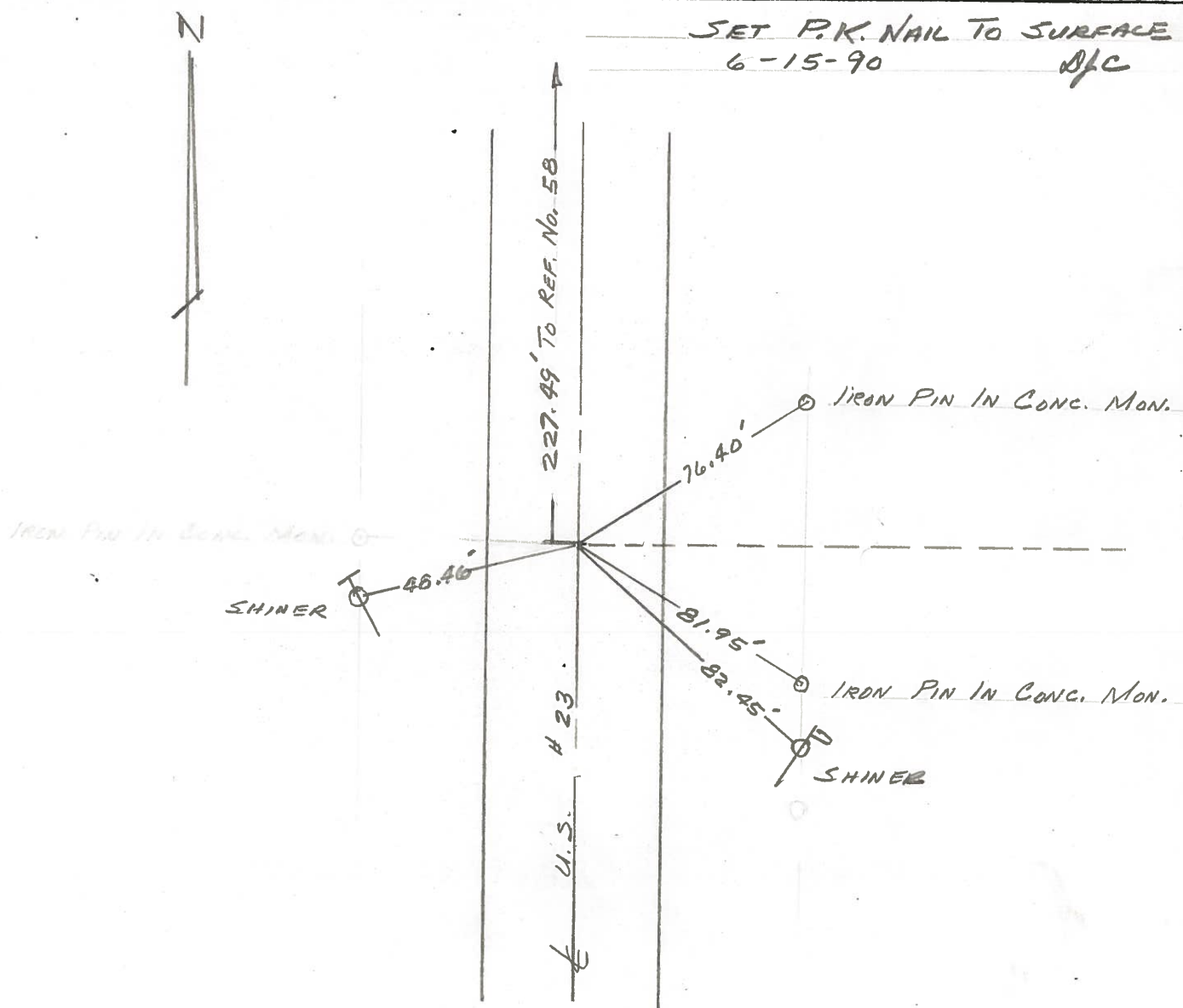
LEFT - & PAV'T. - RIGHT & PAV'T

TO _____ EDGE PAVEMENT

S.L.M. 1082 + 93



SET P.K. NAIL TO SURFACE
6-15-90
D/C



OD.OT. DISTRICT 2 SURVEY OFFICE

Sht. 7 of 7
U.S.-23

County WOOD - SANDUSKY

Date 9-1-77

Township TROY

Weather PT. CLOUDY

Section 24

Temp. +82°

T6N, R12E

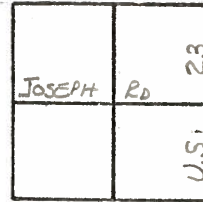
Personnel BURNSIDE

SMITH

BOWERS

KNAPE

MEAD



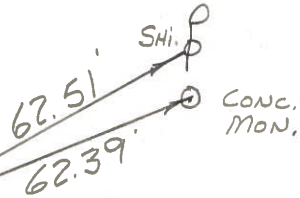
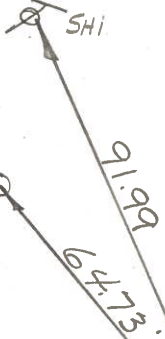
58

END POINT CHECK

Fd. ADI BRASS MON.
2" DEEP,
STA. 1084+51.32

JOSEPH ROAD

CONC. MON.



CONC. MON.
(TOP GONE)



MEA.
227.46
U.S. # 23

CTR. 5/8" REF. ROD
IN CONC. MON.
(TOP GONE)

TIES OK
NOTHING FOUND

I. PIN IN
CONC. MON.

49.49

New
76.21
(76.33
OLD)

81.83

I. PIN IN
CONC. MON.