

CENTER LINE REFERENCE MONUMENTS WILL BE SET BEFORE OR AFTER CONSTRUCTION

--	--	--	--	--	--	--	--	--	--	--	--	--	--	--	--	--	--	--	--	--	--	--	--	--	--	--

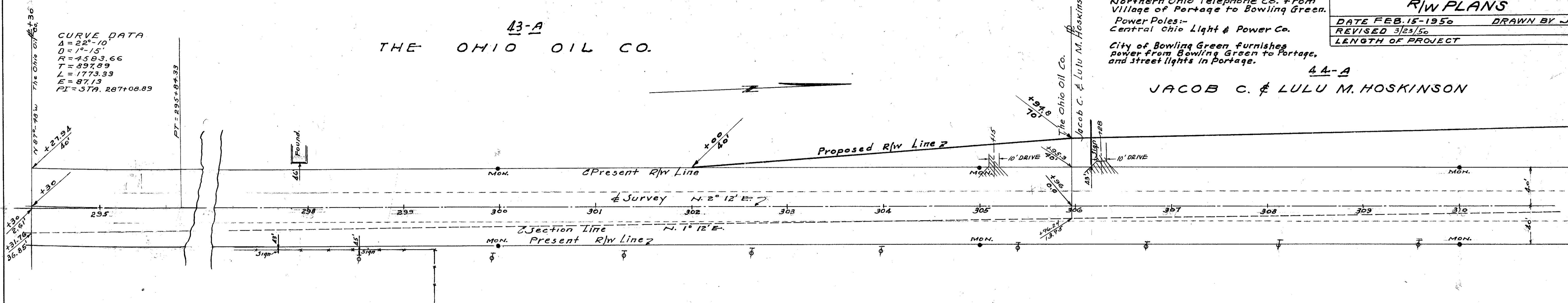


Telephone Poles:-  
Ohio Bell Telephone Co. & Telephone Service Co. of Ohio to and including Village of Portage.  
Northern Ohio Telephone Co. from Village of Portage to Bowling Green.  
Power Poles:-  
Central Ohio Light & Power Co.  
City of Bowling Green furnishes power from Bowling Green to Portage, and street lights in Portage.

DATE FEB. 15-1950 DRAWN BY J.S. # R.R.  
REVISED 3/23/50  
LENGTH OF PROJECT

JACOB C. & LULU M. HOSKINSON

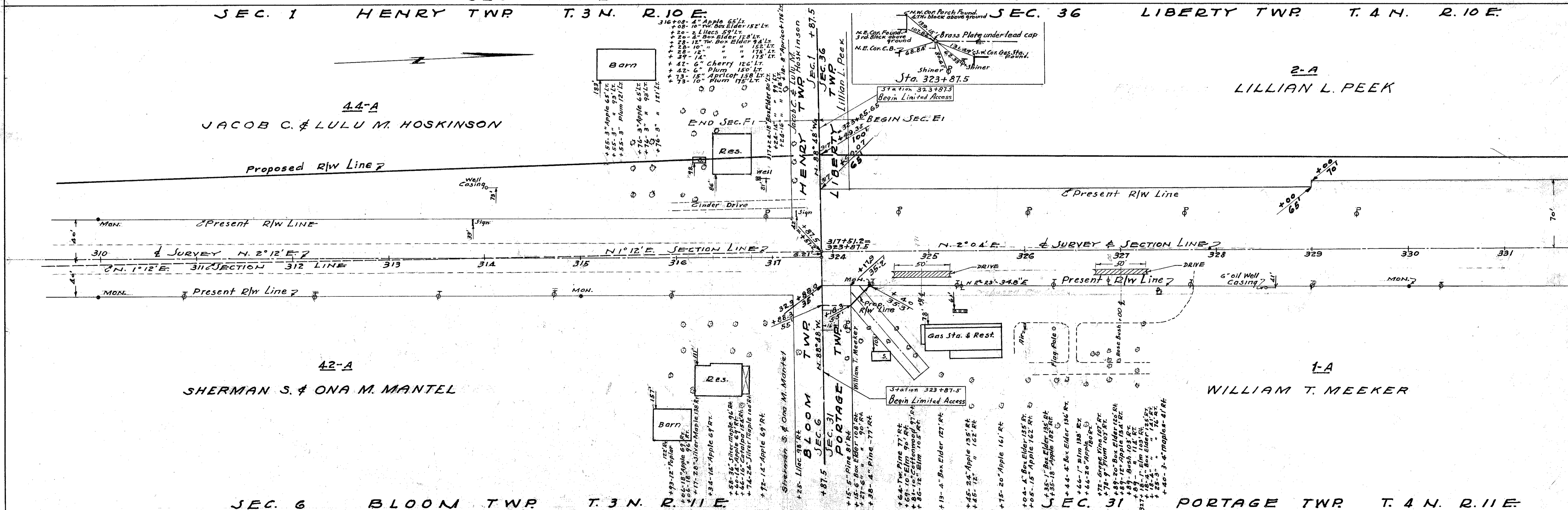
43-A  
THE OHIO OIL CO.



42-A  
SHERMAN S. & ONA M. MANTEL

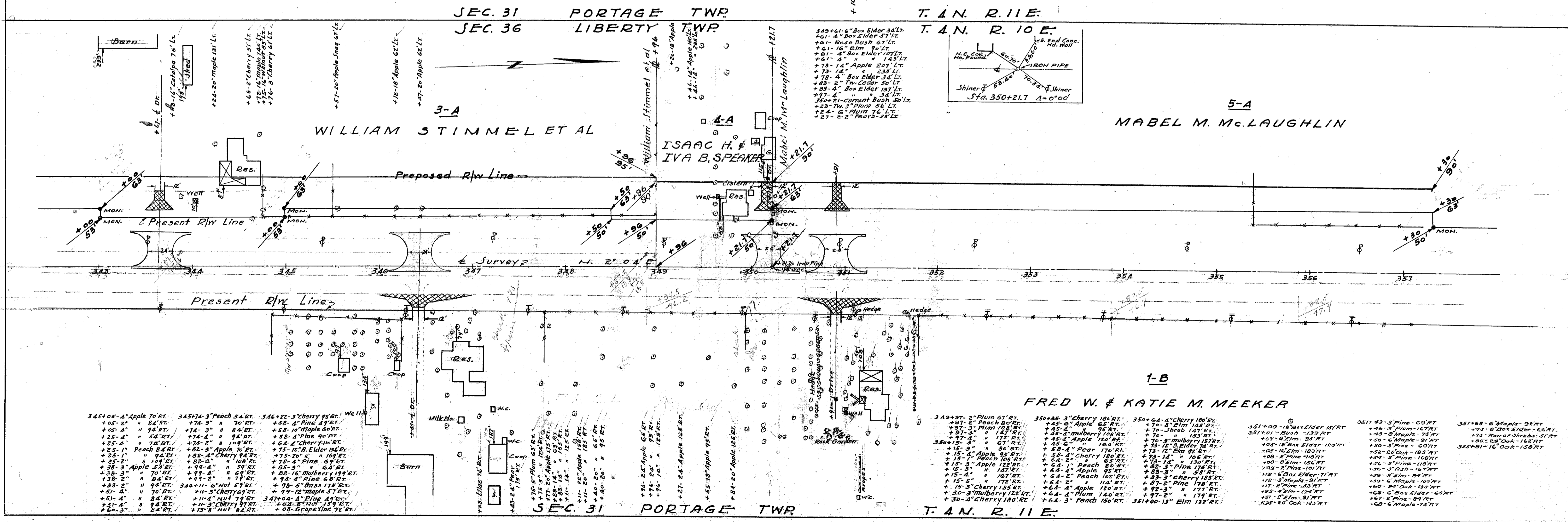
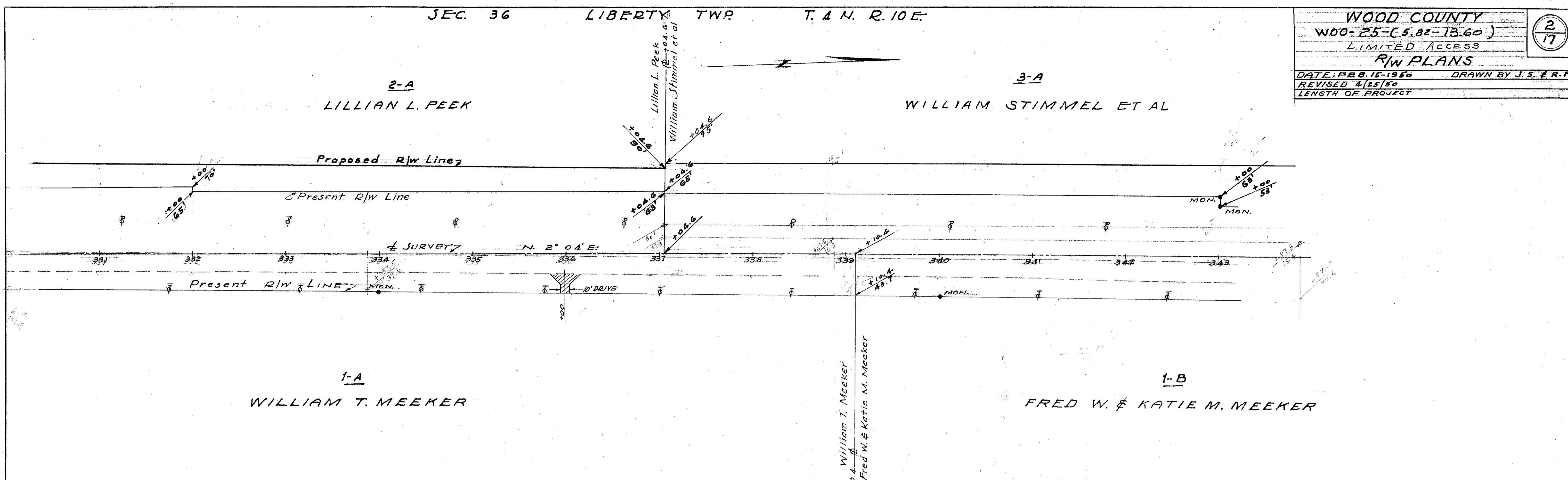
4.4-A  
JACOB C. & LULU M. HOSKINSON

2-A  
LILLIAN L. PEEK



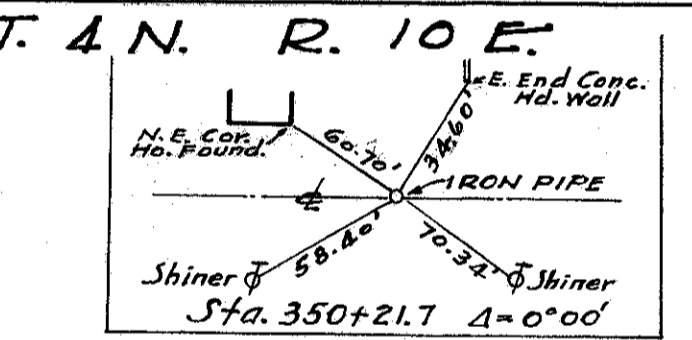
42-A  
SHERMAN S. & ONA M. MANTEL

1-A  
WILLIAM T. MEEKER



- 345+06-4" Apple 70' RT.
- +05-2" " 84' RT.
- +25-4" " 74' RT.
- +25-4" " 70' RT.
- +25-1" Peach 84' RT.
- +25-1" " 94' RT.
- +38-3" Apple 54' RT.
- +38-3" " 70' RT.
- +38-2" " 84' RT.
- +38-2" " 94' RT.
- +51-4" " 70' RT.
- +51-4" " 84' RT.
- +20-5" " 84' RT.
- 345+74-3" Peach 54' RT.
- +74-3" " 70' RT.
- +74-4" " 94' RT.
- +76-2" " 109' RT.
- +82-3" Apple 70' RT.
- +82-4" Cherry 94' RT.
- +82-2" " 108' RT.
- +99-4" " 59' RT.
- +99-4" " 69' RT.
- +99-4" " 79' RT.
- +99-4" " 89' RT.
- +11-3" Cherry 69' RT.
- +11-4" Nut 79' RT.
- +11-3" Cherry 94' RT.
- +13-2" Nut 84' RT.
- 346+22-3" Cherry 95' RT. Well
- +58-4" Pine 49' RT.
- +58-10" Maple 60' RT.
- +58-4" Pine 90' RT.
- +64-4" Cherry 110' RT.
- +75-12-8" Elder 134' RT.
- +75-20" " 169' RT.
- +78-4" Pine 69' RT.
- +85-3" " 64' RT.
- +88-16" Mulberry 199' RT.
- +98-4" Pine 68' RT.
- +98-5" Bass 178' RT.
- +99-12" Maple 57' RT.
- 347+04-4" Pine 49' RT.
- +04-3" Nut 79' RT.
- +08- Grape Vine 72' RT.

- 349+61-6" Box Elder 34' Lt.
- +61-6" Box Elder 57' Lt.
- +61- Rose Bush 67' Lt.
- +61-16" Elm 90' Lt.
- +61-4" Box Elder 107' Lt.
- +61-4" " 143' Lt.
- +73-14" Apple 207' Lt.
- +73-14" " 233' Lt.
- +78-4" Box Elder 34' Lt.
- +83-2" W. Cedar 50' Lt.
- +83-4" Box Elder 137' Lt.
- +84-1" " 34' Lt.
- +97-4" " " "
- 350+21- Current Bush 50' Lt.
- +23-7" Plum 56' Lt.
- +24-6" Plum 16' Lt.
- +27-2-2" Pears-33' Lt.



- 349+97-2" Plum 67' RT.
- +97-2" Peach 80' RT.
- +97-3" Plum 108' RT.
- +97-4" " 127' RT.
- 350+15-3" " 87' RT.
- +15-3" " 80' RT.
- +15-4" Apple 95' RT.
- +15-3" Peach 108' RT.
- +15-3" Apple 122' RT.
- +15-3" " 137' RT.
- +15-4" " 167' RT.
- +15-5" " 172' RT.
- +30-3" Cherry 123' RT.
- +30-4" Cherry 180' RT.
- 350+35-3" Cherry 180' RT.
- +45-6" Apple 65' RT.
- +45-4" Mulberry 108' RT.
- +45-4" Apple 120' RT.
- +45-6" " 160' RT.
- +50-4" Pear 170' RT.
- +50-4" Cherry 180' RT.
- +64-2" " 68' RT.
- +64-1" Peach 80' RT.
- +64-4" Apple 98' RT.
- +64-2" Peach 102' RT.
- +64-2" " 112' RT.
- +64-4" Apple 120' RT.
- +64-4" Plum 140' RT.
- +64-3" Peach 150' RT.
- 350+64-4" Cherry 180' RT.
- +70-8" Elm 148' RT.
- +70-8" Shrub 147' RT.
- +70- " 153' RT.
- +70-3" Mulberry 157' RT.
- +73-12-8" Elder 174' RT.
- +73-12" Elm 172' RT.
- +73-14" " 102' RT.
- +73-14" " 130' RT.
- +82-3" Pine 135' RT.
- +82-3" " 58' RT.
- +82-3" Cherry 153' RT.
- +87-2" Pine 178' RT.
- +92-3" " 177' RT.
- +97-2" " 179' RT.
- 351+00-12" Box Elder 157' RT.
- 351+01- Bush -139' RT.
- +03-8" Elm 95' RT.
- +05-12" Box Elder 123' RT.
- +05-16" Elm 103' RT.
- +08-2" Pine 118' RT.
- +08-6" Elm 124' RT.
- +09-2" Pine 101' RT.
- +09-3" Pine 108' RT.
- +09-3" Elm 84' RT.
- +09-3" Elm 107' RT.
- +09-2" Oak 135' RT.
- +08-6" Box Elder 63' RT.
- +08-2" Pine 84' RT.
- +08-2" Oak 103' RT.
- +08-2" Oak 124' RT.
- +08-2" Oak 145' RT.
- +08-2" Oak 162' RT.
- +08-2" Oak 158' RT.
- 351+43-3" Pine -69' RT.
- +46-3" Plum 167' RT.
- +46-8" Maple 75' RT.
- +50-6" Maple 91' RT.
- +50-3" Pine -60' RT.
- +52-8" Oak -105' RT.
- +59-3" Pine -108' RT.
- +59-3" Elm 84' RT.
- +59-3" Maple 107' RT.
- +59-2" Oak 135' RT.
- +58-4" Elm 174' RT.
- +58-2" Pine 84' RT.
- +58-2" Maple 75' RT.
- 351+68-6" Maple -92' RT.
- +74-8" Box Elder -66' RT.
- +76-2" Row of Shrubs -51' RT.
- +80-2" Oak -162' RT.
- 355+01-16" Oak -158' RT.





9-A  
DELIA M. & ALBERT A. ROBERTS

11-A  
JOHN MILTON SWEET ET AL

Proposed R/W Line

Present R/W Line

Survey N. 1° 40' E.

Present R/W Line

- 855-04-30 Maple-86 RT
- 717-20 Elm-32 RT
- 717-20 Box Elder-189 RT
- 719-12 Maple-132 RT
- 737-24 Maple-180 RT
- 750-16 Maple-105 RT
- 761-28 Maple-121 RT
- 775-6 Box Elder-82 RT
- 775-24 Maple-105 RT
- 785-10 Coffinwood-80 RT
- 886-20 Maple-181 RT
- 126-14 Maple-88 RT
- 146-12 Box Elder-181 RT
- 167-8 Box Elder-88 RT
- 175-3 Box Elder-181 RT
- 275-3 Box Elder-149 RT

8-C  
LETTA L. PEANEY

10-A  
RALPH SR. & ELIZABETH LILLIAN BIGELOW

10-B  
HICKOK OIL CORPORATION

10-C  
RALPH JR. & PAULINE ALBERTINA BIGELOW

12-A  
CORA P. SHAFFER ET AL

17-A  
CARRIE BIETTNER

Proposed R/W Line

Present R/W Line

Survey N. 1° 40' E.

Present R/W Line

16  
EARL W. & MARTHA C. JOHNSTON

- 396-15-3 Box Elder-50 RT
- 115-Rose Bush-66 RT
- 115-3 Box Elder-50 RT
- 115-3 Box Elder-126 RT
- 113-2 Box Elder-50 RT
- 113-Twin 8' Willow-80 RT
- 11-3 Box Elder-50 RT
- 11-4 Box Elder-50 RT

- 396-69-2 Box Elder-50 RT
- 397-2 Box Elder-50 RT
- 397-04-3 Willow-50 RT
- 106-Rose Bush-80 RT
- 398-04-3 Elm-45 RT
- 108-18 Elm-55 RT
- 107-30 Box Elder-80 RT
- 104-20 Box Elder-163 RT

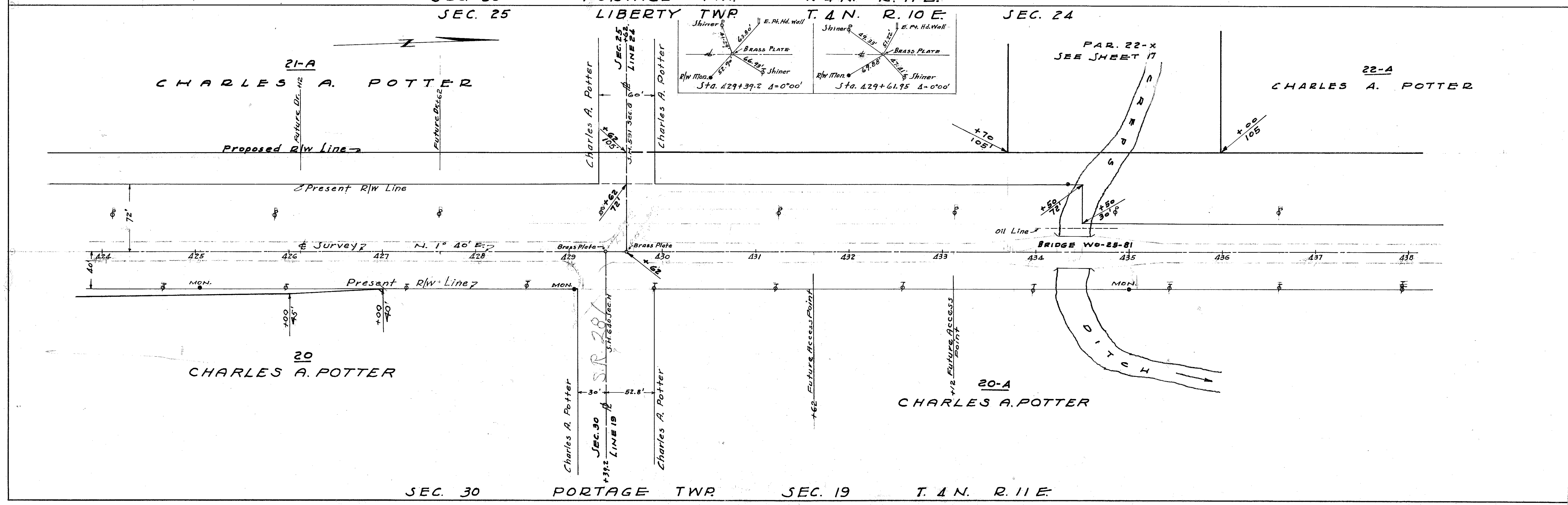
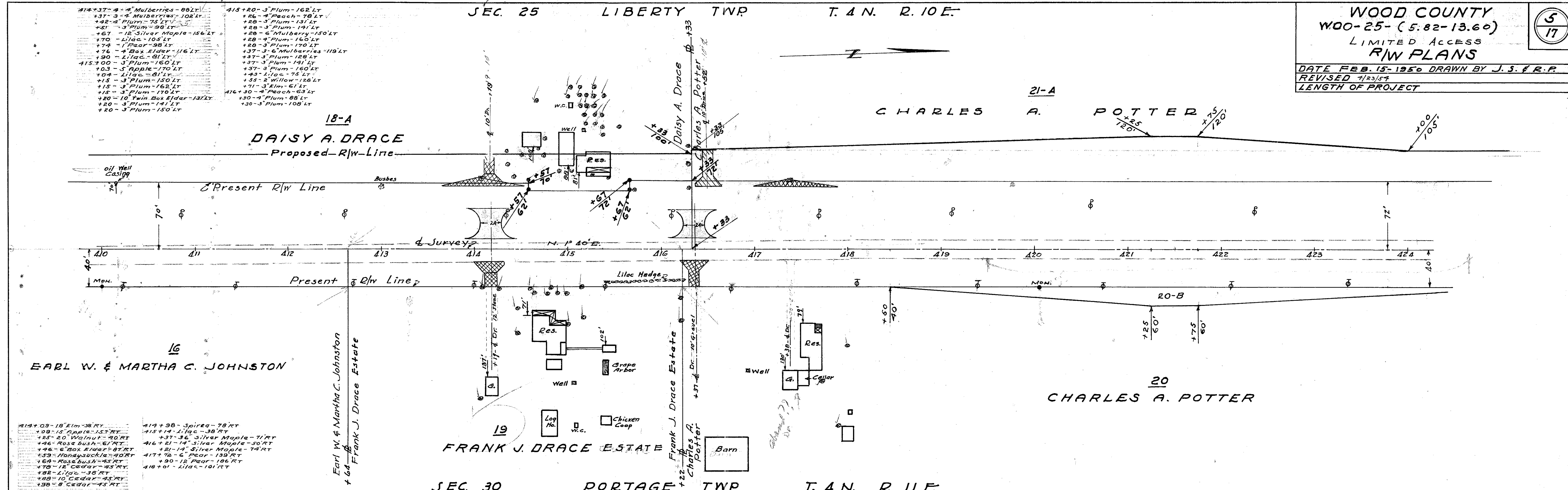
- 398-36-12 Catalpa-90 RT
- 399-100-3 Maple-55 RT
- 105-20 Box Elder-128 RT
- 106-Rose Bush-80 RT
- 114-3 Maple-55 RT
- 108-18 Elm-55 RT
- 107-16 Pear-60 RT
- 104-8 Pear-36 RT

- 399-41-3 Cherry-143 RT
- 101-18 Cherry-163 RT
- 109-10 Willow-67 RT
- 106-3 Shrub Bush-120 RT
- 150-Tamarac-90 RT
- 108-12 Pear-65 RT
- 108-12 Pear-65 RT
- 108-12 Pear-65 RT

- 101-12 Pear-117 RT
- 101-12 Pear-163 RT
- 108-12 Pear-83 RT
- 108-12 Pear-101 RT
- 100+30-10 Pear-101 RT
- 108-10 Apple-103 RT
- 101+29-12 Apple-50 RT
- 123-12 Apple-65 RT

- 401+60-12 Pear-90 RT
- 108-20 Pear-65 RT
- 108+30-3 Apple-50 RT
- 104-3 Apple-50 RT





- 414+37-4-4' Mulberries-80'LT
- 437-3-4' Mulberries-102'LT
- 442-4' Plum-75'LT
- 451-3' Plum-98'LT
- 467-12' Silver Maple-156'LT
- 470-1' Lilac-105'LT
- 474-1' Pear-98'LT
- 476-4' Box Elder-116'LT
- 490-1' Lilac-81'LT
- 415+00-3' Plum-160'LT
- 403-5' Apple-170'LT
- 404-1' Lilac-81'LT
- 415-3' Plum-160'LT
- 420-10' Twin Box Elder-131'LT
- 420-3' Plum-141'LT
- 420-3' Plum-150'LT
- 415+20-3' Plum-162'LT
- 426-4' Peach-78'LT
- 428-3' Plum-131'LT
- 428-3' Plum-141'LT
- 428-6' Mulberry-150'LT
- 428-4' Plum-140'LT
- 428-3' Plum-170'LT
- 437-3-6' Mulberries-119'LT
- 437-3' Plum-128'LT
- 437-3' Plum-141'LT
- 437-3' Plum-160'LT
- 443-1' Lilac-75'LT
- 455-2' Willow-158'LT
- 471-3' Elm-61'LT
- 416+30-4' Peach-63'LT
- 430-4' Plum-88'LT
- 430-3' Plum-108'LT

- 414+03-16' Elm-38'RT
- 408-15' Apple-157'RT
- 485-20' Walnut-40'RT
- 446-6' Rose Bush-61'RT
- 446-6' Box Elder-87'RT
- 459-1' Honeysuckle-40'RT
- 469-1' Rose Bush-45'RT
- 470-12' Cedar-45'RT
- 485-1' Lilac-38'RT
- 408-10' Cedar-45'RT
- 438-8' Cedar-45'RT
- 414+98-3' Spirea-78'RT
- 415+14-1' Lilac-38'RT
- 437-3-6' Silver Maple-71'RT
- 416+81-14' Silver Maple-50'RT
- 421-14' Silver Maple-74'RT
- 417+70-6' Pear-139'RT
- 430-12' Pear-186'RT
- 418+01-1' Lilac-101'RT



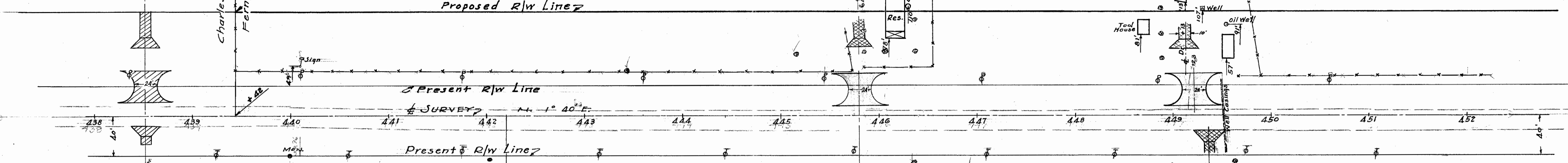
WOOD COUNTY  
 WOO-25-(5.82-13.60)  
 LIMITED ACCESS  
 R/W PLANS  
 DATE FEB. 15-1950 DRAWN BY J.S. & R.P.  
 REVISED 4/25/50  
 LENGTH OF PROJECT

SEC. 24 LIBERTY TWP. T. 4 N. R. 10 E.

- 443+44-16 Sycamore-44 LT
- 443+46-24 Sycamore-60 LT
- 446-3 Box Elder-63 LT
- 446-3 Box Elder-63 LT
- 446-3 Box Elder-110 LT
- 446-3 Box Elder-152 LT
- 446+07-4 Twi Elm-63 LT
- 447-3 Box Elder-63 LT
- 447-3 Box Elder-93 LT
- 447-6 Box Elder-157 LT
- 448+89-20 Cottonwood-56 LT
- 448-20 Cottonwood-81 LT
- 448-20 Cottonwood-106 LT

26  
FERN LUCILLE RUPP  
(LIFE ESTATE)

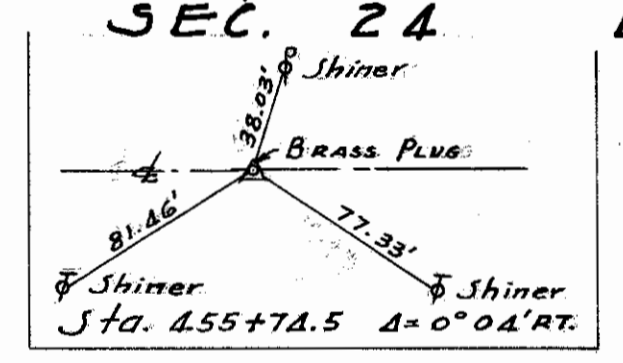
22-A  
CHARLES A. POTTER



20-A  
CHARLES A. POTTER

23  
JENNIE TELLER ET AL

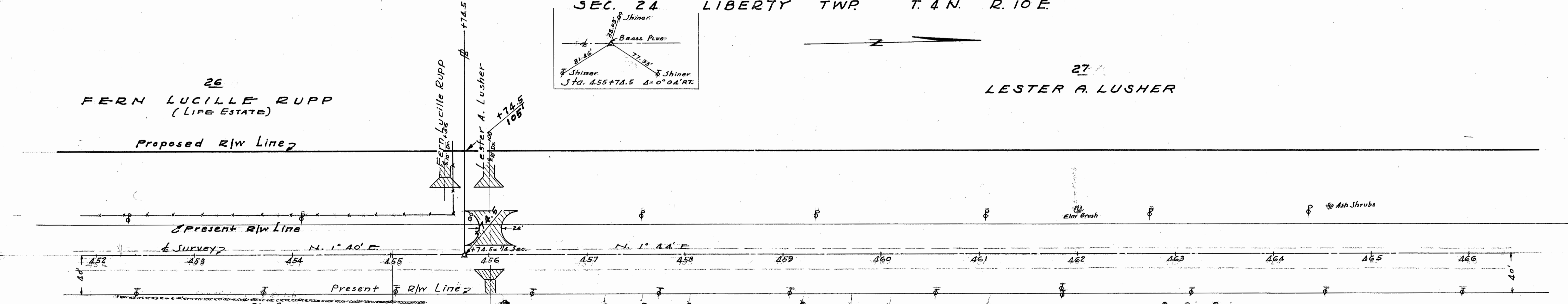
SEC. 19 PORTAGE TWP. T. 4 N. R. 11 E.  
SEC. 24 LIBERTY TWP. T. 4 N. R. 10 E.



- 442+03-16 Elm-43 RT
- 444+18-16 Box Elder-60 RT
- 446-118c-45 RT
- 449-4 Box Elder-69 RT
- 453-3 Plum-68 RT
- 455-3 Plum-62 RT
- 456-3 Plum-58 RT
- 459-3 Plum-58 RT
- 452-3 Plum-49 RT
- 452-3 Plum-38 RT
- 443+62-4 Elm-44 RT

26  
FERN LUCILLE RUPP  
(LIFE ESTATE)

27  
LESTER A. LUSHER



23  
JENNIE TELLER ET AL

24  
MATTIE S. ROUSE

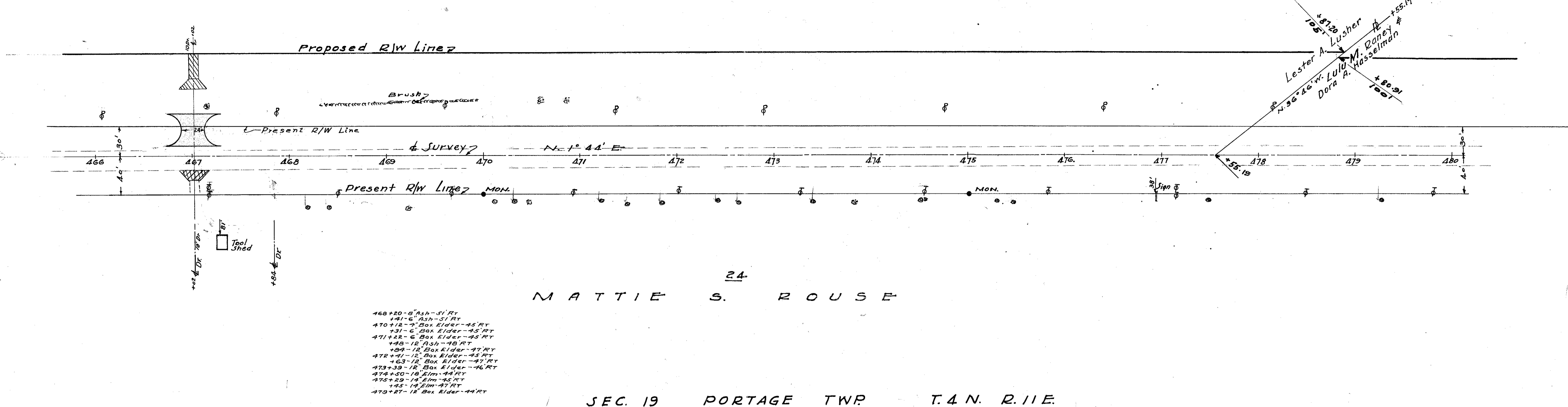
- 453+53-Clump of 6 Elms-62 RT
- 467-12 Elm-80 RT
- 489-Clump of Elms-6 to 10-62 RT
- 491-Clump of Ash-94 RT
- 454+71-36 Oak-67 RT
- 456+18-20 Ash-47 RT
- 457+18-20 Elm-49 RT
- 457-18 Elm-49 RT
- 458+05-14 Elm-49 RT
- 459+19-15 Ash-49 RT
- 459-14 Ash-37 RT
- 460+10-14 Elm-37 RT
- 461+11-14 Elm-37 RT
- 462+09-14 Elm-49 RT
- 463+41-24 Elm-49 RT

SEC. 19 PORTAGE TWP. T. 4 N. R. 11 E.

**WOOD COUNTY**  
 WOO-25-(5.82-13.60)  
 LIMITED ACCESS  
**R/W PLANS**  
 DATE FEB. 15-1950 DRAWN BY J.S. & R.P.  
 REVISED  
 LENGTH OF PROJECT

7  
17

27  
LESTER A. LUSHER

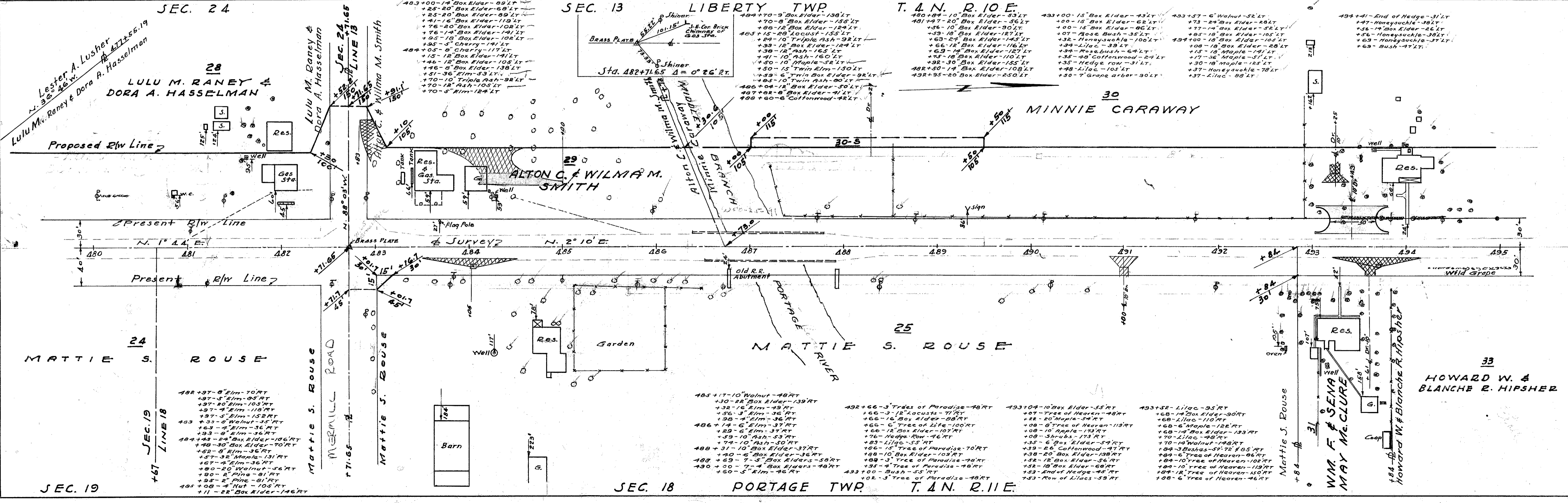


28  
MATTIE S. ROUSE

- 468+20-6' Ash-51' RT
- 470+12-4' Box Elder-45' RT
- 471+22-6' Box Elder-45' RT
- 472+12-4' Box Elder-45' RT
- 473+12-4' Box Elder-45' RT
- 474+20-10' Elm-44' RT
- 475+29-14' Elm-45' RT
- 476+14-8' Elm-47' RT
- 477+27-18' Box Elder-44' RT

SEC. 19 PORTAGE TWP T. 4 N. R. 11 E.

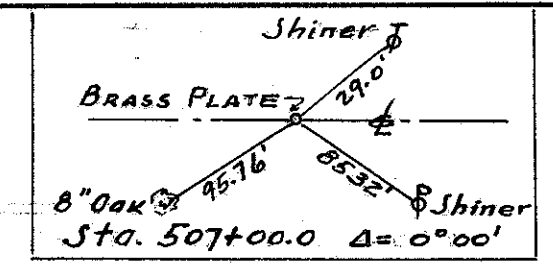
SEC. 13 LIBERTY TWP T. 4 N. R. 10 E.



SEC. 18 PORTAGE TWP T. 4 N. R. 11 E.



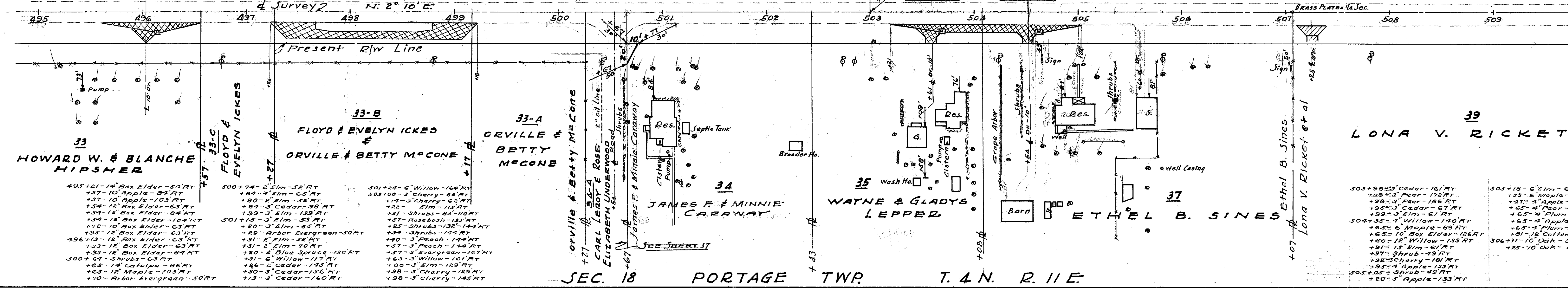
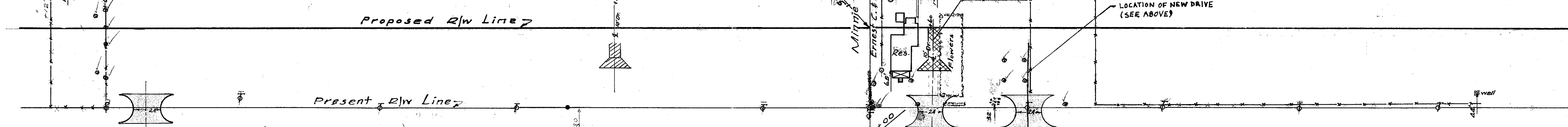
SEC. 13 LIBERTY TWP. T. 4 N. R. 10 E.



WOOD COUNTY  
WOO-25-(5.82-13.60)  
LIMITED ACCESS  
R/W PLANS  
DATE FEB. 15-1950 DRAWN BY J.S. & R.P.  
REVISED 5/12/50 G/S/S/I  
LENGTH OF PROJECT

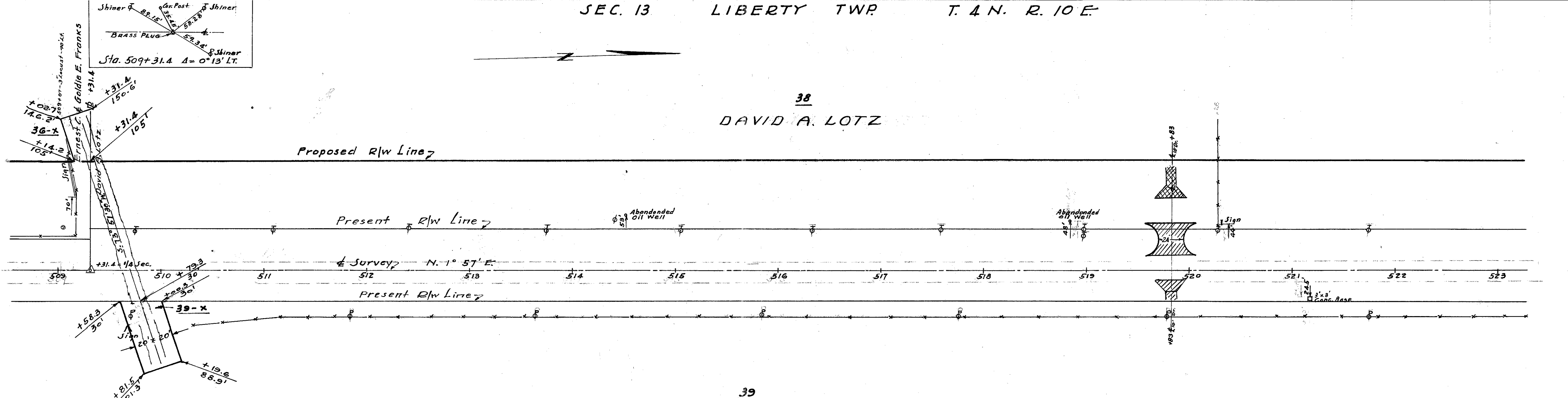
30  
MINNIE CARAWAY

36  
ERNEST C. & GOLDIE E. FRANKS



SEC. 18 PORTAGE TWP. T. 4 N. R. 11 E.  
SEC. 13 LIBERTY TWP. T. 4 N. R. 10 E.

38  
DAVID A. LOTZ



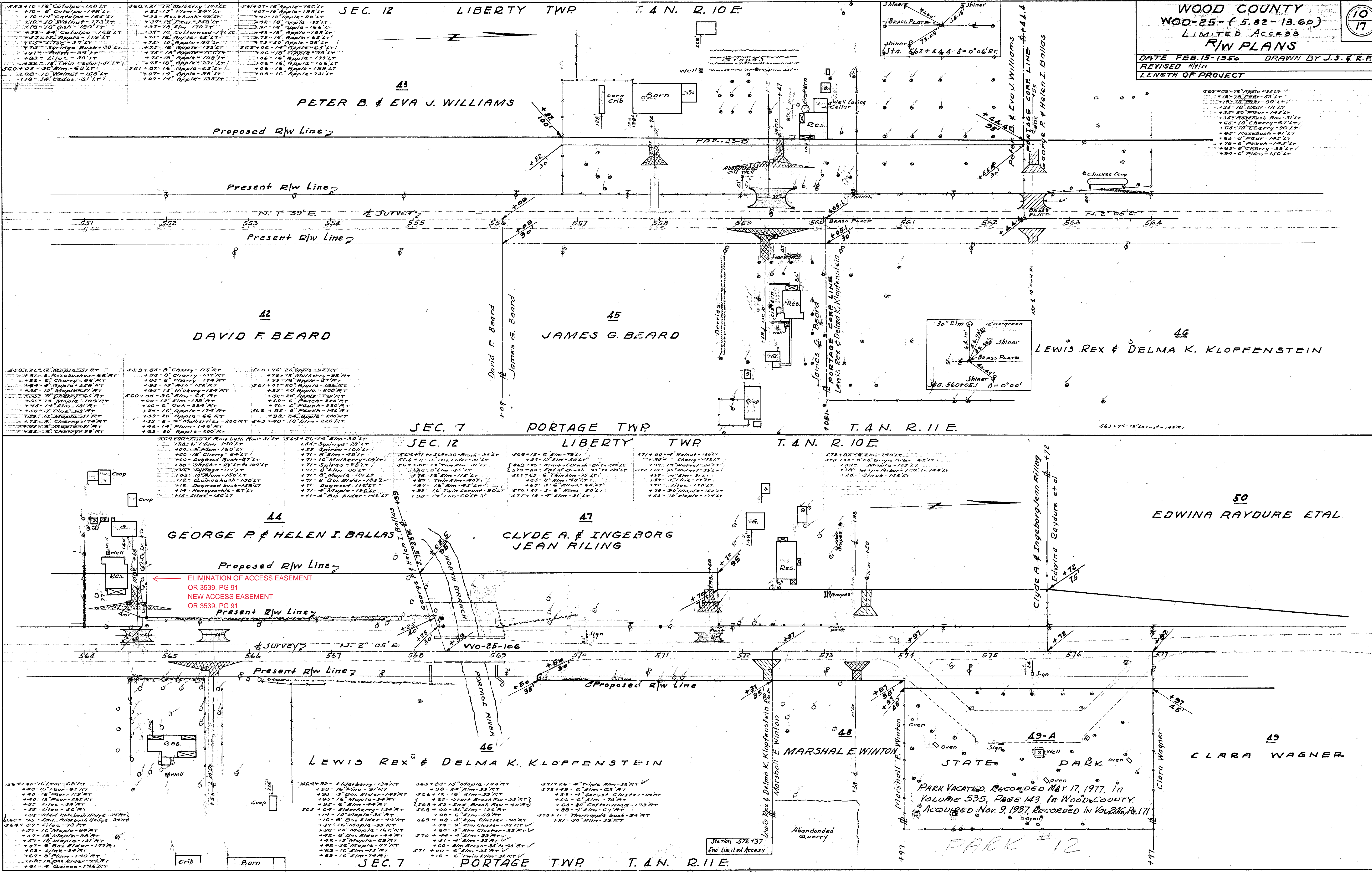
39  
LONA V. RICKET ET AL

SEC. 18 PORTAGE TWP. T. 4 N. R. 11 E.





**WOOD COUNTY**  
**W00-25-(5.82-13.60)**  
**LIMITED ACCESS**  
**R/W PLANS**  
 DATE FEB. 15-1950 DRAWN BY J.S. & R.P.  
 REVISED 5/7/51  
 LENGTH OF PROJECT



SEC. 12 LIBERTY TWP T. 4 N. R. 10 E.

553+10-16 Catalpa-128 LT	560+21-12 Mulberry-103 LT	56307-16 Apple-166 LT
+10-8 Catalpa-148 LT	+23-15 Plum-287 LT	3 07-18 Apple-158 LT
+10-14 Catalpa-165 LT	+32-Rose bush-49 LT	+42-18 Apple-98 LT
+10-10 Walnut-173 LT	+37-13 Pear-258 LT	+37-13 Pear-258 LT
+13-10 Ash-130 LT	+37-15 Elm-170 LT	+42-14 Apple-164 LT
+33-8 Catalpa-182 LT	+37-18 Cottonwood-171 LT	+42-12 Apple-198 LT
+57-15 Apple-119 LT	+43-18 Apple-65 LT	+37-18 Apple-65 LT
+53-11 Loc-37 LT	+43-18 Apple-98 LT	+37-20 Apple-98 LT
+73-Syringa bush-38 LT	+43-18 Apple-133 LT	562+06-14 Apple-65 LT
+31-Bush-34 LT	+45-10 Apple-166 LT	+06-10 Apple-133 LT
+33-Lilac-38 LT	+45-10 Apple-198 LT	+06-16 Apple-133 LT
+59-12 Twin Cedar-51 LT	+47-18 Apple-31 LT	+06-16 Apple-198 LT
560+05-36 Elm-68 LT	561+07-16 Apple-65 LT	+06-16 Apple-231 LT
+08-10 Walnut-168 LT	+07-14 Apple-98 LT	
+18-14 Cedar-51 LT	+07-14 Apple-133 LT	

563+02-18 Apple-35 LT	+18-18 Pear-53 LT
+18-18 Pear-90 LT	+35-18 Pear-111 LT
+35-20 Pear-145 LT	+35-20 Pear-145 LT
+35-Rosebush Row-31 LT	+65-10 Cherry-67 LT
+65-10 Cherry-67 LT	+65-10 Cherry-60 LT
+65-Rosebush-41 LT	+65-10 Pear-145 LT
+70-6 Peach-145 LT	+83-8 Cherry-39 LT
+94-6 Plum-150 LT	

SEC. 7 PORTAGE TWP T. 4 N. R. 11 E.

559+21-12 Maple-51 RT	559+85-8 Cherry-115 RT	560+96-20 Apple-92 RT
+21-2 Rosebush-68 RT	+85-8 Cherry-137 RT	+28-12 Apple-92 RT
+22-8 Cherry-96 RT	+85-8 Cherry-174 RT	+33-12 Apple-37 RT
+49-8 Apple-250 RT	+93-15 Apple-128 RT	561+07-20 Apple-286 RT
+35-12 Maple-51 RT	+85-12 Apple-200 RT	+18-12 Apple-200 RT
+35-8 Cherry-65 RT	560+00-36 Elm-65 RT	+52-20 Apple-173 RT
+35-12 Maple-104 RT	+00-18 Elm-139 RT	+60-6 Peach-220 RT
+45-12 Elm-130 RT	+24-16 Apple-174 RT	+00-6 Peach-220 RT
+50-3 Elm-65 RT	+33-20 Apple-66 RT	562+95-6 Peach-146 RT
+59-15 Maple-51 RT	+13-8 Mulberry-200 RT	563+40-10 Elm-220 RT
+75-8 Cherry-115 RT	+46-14 Plum-146 RT	+63-20 Apple-200 RT
+85-8 Maple-51 RT	+63-20 Apple-200 RT	

ELIMINATION OF ACCESS EASEMENT  
 OR 3539, PG 91  
 NEW ACCESS EASEMENT  
 OR 3539, PG 91

PARK VACATED, RECORDED MAY 17, 1977, IN  
 VOLUME 535, PAGE 143 IN WOOD COUNTY,  
 ACQUIRED NOV. 9, 1937, RECORDED IN VOL. 246, PG. 171

PARK #12



SEC. 12 LIBERTY TWP. T. 4 N. R. 10 E. VILLAGE OF PORTAGE

**WOOD COUNTY**  
 WOO-25-(5.82-13.60)  
 LIMITED ACCESS  
 R/W PLANS

DATE FEB. 15-1950 DRAWN BY J.S. & R.P.  
 REVISED 2/27/38 4/25/50  
 LENGTH OF PROJECT

Shiner 6272 8055 3.E. on Gas Sta.  
 18.25 Towa Pump  
 Iron Pipe Sidewalk  
 Shiner  
 Sta. 588+94.96 Δ = 0°02' L.

EDWINA RAYDURE ET AL

Proposed R/W Line

Present R/W Line

Present R/W Line

Proposed R/W Line

CLARA WAGNER

SEC. 7 PORTAGE TWP. T. 4 N. R. 11 E. SEC. 6

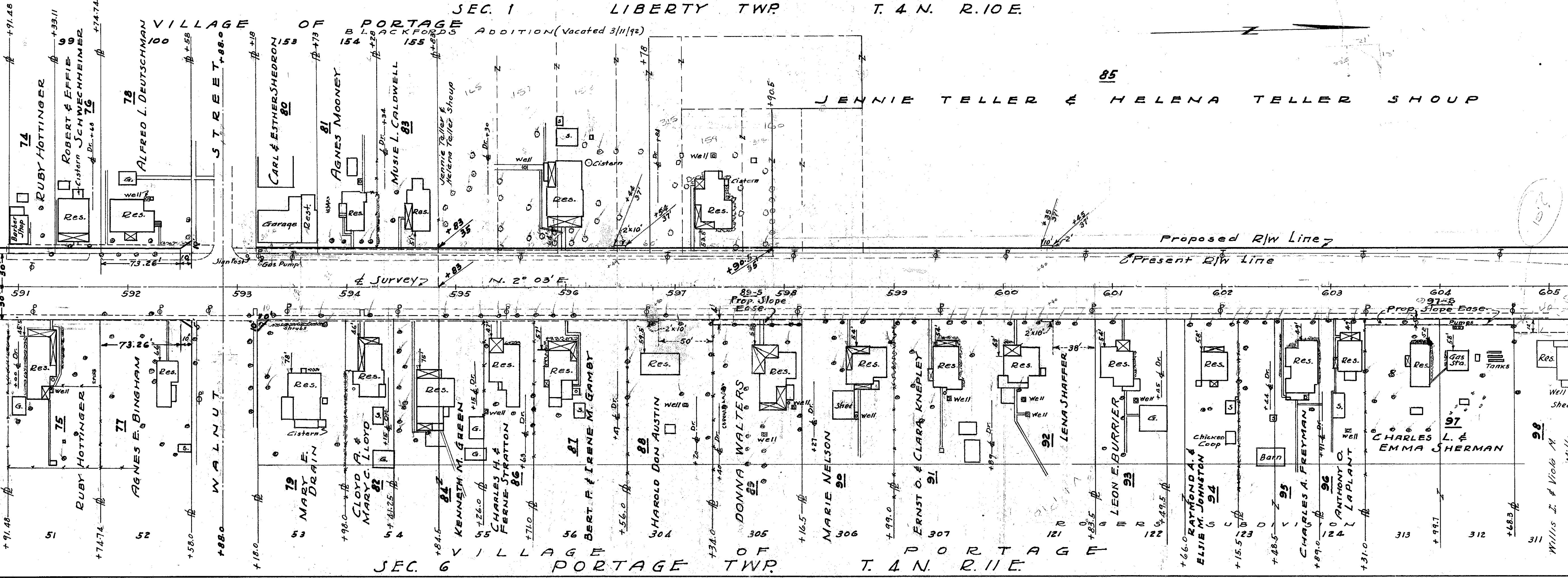
SEC. 1 LIBERTY TWP. T. 4 N. R. 10 E. VILLAGE OF PORTAGE

SEC. 6 VILLAGE OF PORTAGE TWP. T. 4 N. R. 11 E.

JENNIE TELLER & HELENA TELLER SHOUP

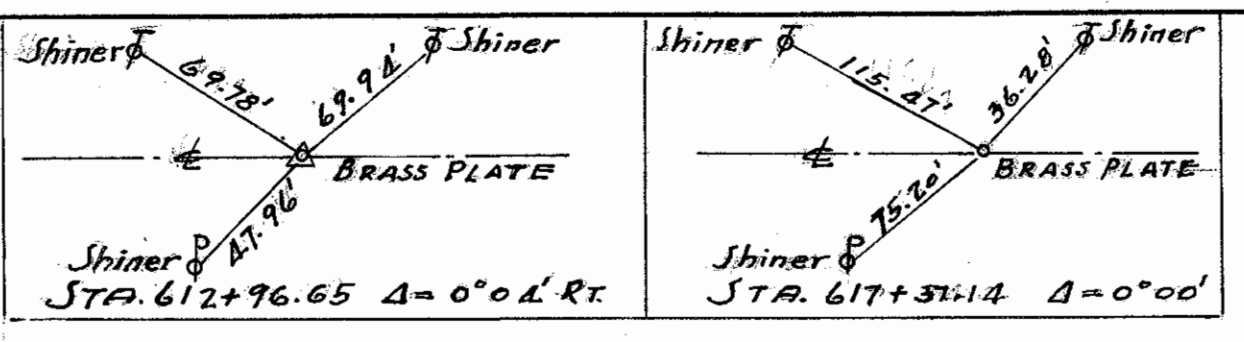
Proposed R/W Line

Present R/W Line





SEC. 1 LIBERTY TWP T. 4 N. R. 10 E.



WOOD COUNTY  
WOO-25-(5.82-13.60)  
LIMITED ACCESS  
R/W PLANS  
DATE FEB. 15-1950 DRAWN BY J. J. & R. P.  
REVISED 11/25/50 8/16/50  
LENGTH OF PROJECT

101  
JENNIE TELLER  
&  
HELENA TELLER SHOUP

99  
HOMER &  
BERTHA M. SHINEW

102  
DAVID F. BEARD  
Carl H Schwyn

SEC. 6 PORTAGE TWP T. 1 N. R. 11 E.  
SEC. 1 LIBERTY TWP T. 1 N. R. 10 E.

103  
WOOD COUNTY STONE & CONSTRUCTION CO.

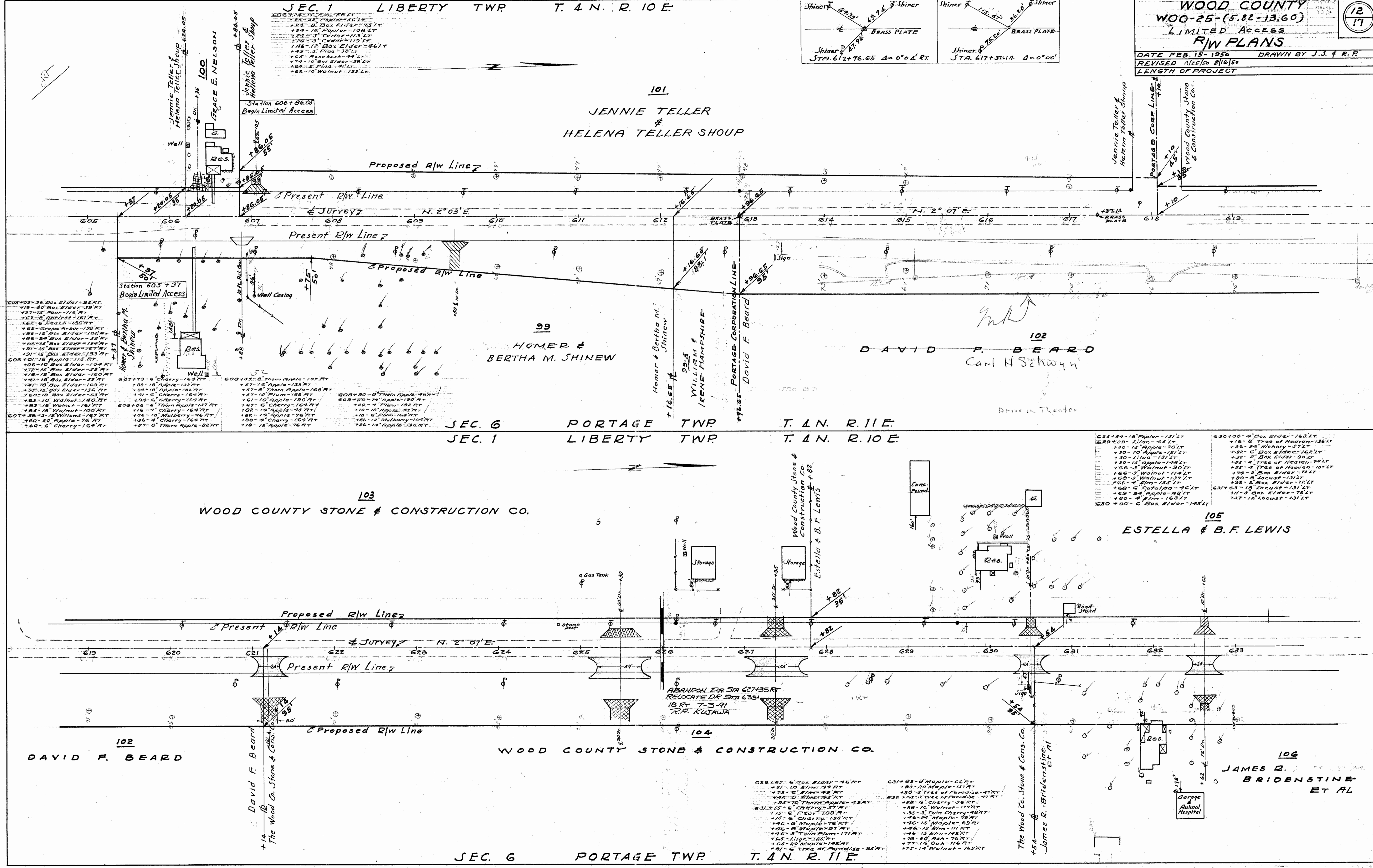
105  
ESTELLA & B. F. LEWIS

102  
DAVID F. BEARD

WOOD COUNTY STONE & CONSTRUCTION CO.

106  
JAMES R.  
BRIDENSTINE  
ET AL

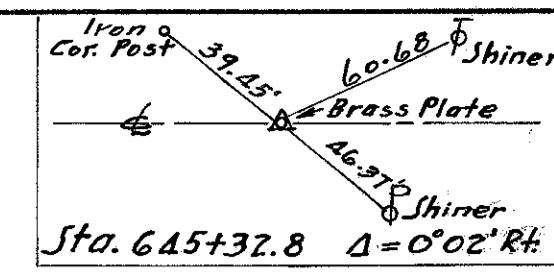
SEC. 6 PORTAGE TWP T. 1 N. R. 11 E.



- 605+30-36 Box Elder-32 RT
- 605+30-37-15 Pear-116 RT
- 605+30-38-8 Apple-161 RT
- 605+30-39-6 Peach-180 RT
- 605+30-40-8 Grape Arbor-138 RT
- 605+30-41-12 Box Elder-106 RT
- 605+30-42-24 Box Elder-52 RT
- 605+30-43-15 Box Elder-189 RT
- 605+30-44-15 Box Elder-177 RT
- 605+30-45-15 Box Elder-133 RT
- 606+01-18 Apple-115 RT
- 606+10-10 Box Elder-104 RT
- 606+12-15 Box Elder-52 RT
- 606+18-18 Box Elder-120 RT
- 607+11-18 Box Elder-53 RT
- 607+11-19-18 Box Elder-103 RT
- 607+11-20-18 Box Elder-136 RT
- 607+11-21-18 Box Elder-53 RT
- 607+11-22-10 Walnut-140 RT
- 607+11-23-18 Walnut-161 RT
- 607+11-24-18 Walnut-100 RT
- 607+33-3-1/2 Willows-167 RT
- 607+33-4-20 Apple-76 RT
- 607+33-5-6 Cherry-164 RT
- 607+33-6-18 Apple-133 RT
- 607+33-7-18 Apple-188 RT
- 607+33-8-16 Cherry-164 RT
- 607+33-9-6 Cherry-164 RT
- 607+33-10-6 Thorn Apple-137 RT
- 607+33-11-16 Mulberry-76 RT
- 607+33-12-4 Cherry-164 RT
- 607+33-13-8 Thorn Apple-82 RT
- 607+33-14-18 Apple-107 RT
- 607+33-15-8 Thorn Apple-133 RT
- 607+33-16-8 Thorn Apple-168 RT
- 607+33-17-10 Plum-102 RT
- 607+33-18-10 Apple-190 RT
- 607+33-19-6 Cherry-164 RT
- 607+33-20-18 Apple-45 RT
- 607+33-21-18 Apple-76 RT
- 607+33-22-4 Cherry-164 RT
- 607+33-23-18 Apple-130 RT
- 607+33-24-18 Apple-76 RT
- 608+30-8-18 Apple-133 RT
- 608+30-9-8 Thorn Apple-168 RT
- 608+30-10-10 Plum-102 RT
- 608+30-11-10 Apple-190 RT
- 608+30-12-6 Cherry-164 RT
- 608+30-13-18 Apple-45 RT
- 608+30-14-10 Plum-102 RT
- 608+30-15-6 Plum-102 RT
- 608+30-16-18 Apple-130 RT
- 608+30-17-18 Apple-76 RT
- 608+30-18-18 Apple-130 RT
- 608+30-19-18 Apple-76 RT
- 608+30-20-18 Apple-130 RT
- 608+30-21-18 Apple-76 RT
- 608+30-22-18 Apple-130 RT
- 608+30-23-18 Apple-76 RT
- 608+30-24-18 Apple-130 RT
- 608+30-25-18 Apple-76 RT
- 608+30-26-18 Apple-130 RT
- 608+30-27-18 Apple-76 RT
- 608+30-28-18 Apple-130 RT
- 608+30-29-18 Apple-76 RT
- 608+30-30-18 Apple-130 RT
- 608+30-31-18 Apple-76 RT
- 608+30-32-18 Apple-130 RT
- 608+30-33-18 Apple-76 RT
- 608+30-34-18 Apple-130 RT
- 608+30-35-18 Apple-76 RT
- 608+30-36-18 Apple-130 RT
- 608+30-37-18 Apple-76 RT
- 608+30-38-18 Apple-130 RT
- 608+30-39-18 Apple-76 RT
- 608+30-40-18 Apple-130 RT
- 608+30-41-18 Apple-76 RT
- 608+30-42-18 Apple-130 RT
- 608+30-43-18 Apple-76 RT
- 608+30-44-18 Apple-130 RT
- 608+30-45-18 Apple-76 RT
- 608+30-46-18 Apple-130 RT
- 608+30-47-18 Apple-76 RT
- 608+30-48-18 Apple-130 RT
- 608+30-49-18 Apple-76 RT
- 608+30-50-18 Apple-130 RT
- 608+30-51-18 Apple-76 RT
- 608+30-52-18 Apple-130 RT
- 608+30-53-18 Apple-76 RT
- 608+30-54-18 Apple-130 RT
- 608+30-55-18 Apple-76 RT
- 608+30-56-18 Apple-130 RT
- 608+30-57-18 Apple-76 RT
- 608+30-58-18 Apple-130 RT
- 608+30-59-18 Apple-76 RT
- 608+30-60-18 Apple-130 RT
- 608+30-61-18 Apple-76 RT
- 608+30-62-18 Apple-130 RT
- 608+30-63-18 Apple-76 RT
- 608+30-64-18 Apple-130 RT
- 608+30-65-18 Apple-76 RT
- 608+30-66-18 Apple-130 RT
- 608+30-67-18 Apple-76 RT
- 608+30-68-18 Apple-130 RT
- 608+30-69-18 Apple-76 RT
- 608+30-70-18 Apple-130 RT
- 608+30-71-18 Apple-76 RT
- 608+30-72-18 Apple-130 RT
- 608+30-73-18 Apple-76 RT
- 608+30-74-18 Apple-130 RT
- 608+30-75-18 Apple-76 RT
- 608+30-76-18 Apple-130 RT
- 608+30-77-18 Apple-76 RT
- 608+30-78-18 Apple-130 RT
- 608+30-79-18 Apple-76 RT
- 608+30-80-18 Apple-130 RT
- 608+30-81-18 Apple-76 RT
- 608+30-82-18 Apple-130 RT
- 608+30-83-18 Apple-76 RT
- 608+30-84-18 Apple-130 RT
- 608+30-85-18 Apple-76 RT
- 608+30-86-18 Apple-130 RT
- 608+30-87-18 Apple-76 RT
- 608+30-88-18 Apple-130 RT
- 608+30-89-18 Apple-76 RT
- 608+30-90-18 Apple-130 RT
- 608+30-91-18 Apple-76 RT
- 608+30-92-18 Apple-130 RT
- 608+30-93-18 Apple-76 RT
- 608+30-94-18 Apple-130 RT
- 608+30-95-18 Apple-76 RT
- 608+30-96-18 Apple-130 RT
- 608+30-97-18 Apple-76 RT
- 608+30-98-18 Apple-130 RT
- 608+30-99-18 Apple-76 RT
- 608+30-100-18 Apple-130 RT
- 608+30-101-18 Apple-76 RT
- 608+30-102-18 Apple-130 RT
- 608+30-103-18 Apple-76 RT
- 608+30-104-18 Apple-130 RT
- 608+30-105-18 Apple-76 RT
- 608+30-106-18 Apple-130 RT
- 608+30-107-18 Apple-76 RT
- 608+30-108-18 Apple-130 RT
- 608+30-109-18 Apple-76 RT
- 608+30-110-18 Apple-130 RT

- 625+24-18 Apple-131 RT
- 625+24-19-18 Apple-131 RT
- 625+24-20-18 Apple-131 RT
- 625+24-21-18 Apple-131 RT
- 625+24-22-18 Apple-131 RT
- 625+24-23-18 Apple-131 RT
- 625+24-24-18 Apple-131 RT
- 625+24-25-18 Apple-131 RT
- 625+24-26-18 Apple-131 RT
- 625+24-27-18 Apple-131 RT
- 625+24-28-18 Apple-131 RT
- 625+24-29-18 Apple-131 RT
- 625+24-30-18 Apple-131 RT
- 625+24-31-18 Apple-131 RT
- 625+24-32-18 Apple-131 RT
- 625+24-33-18 Apple-131 RT
- 625+24-34-18 Apple-131 RT
- 625+24-35-18 Apple-131 RT
- 625+24-36-18 Apple-131 RT
- 625+24-37-18 Apple-131 RT
- 625+24-38-18 Apple-131 RT
- 625+24-39-18 Apple-131 RT
- 625+24-40-18 Apple-131 RT
- 625+24-41-18 Apple-131 RT
- 625+24-42-18 Apple-131 RT
- 625+24-43-18 Apple-131 RT
- 625+24-44-18 Apple-131 RT
- 625+24-45-18 Apple-131 RT
- 625+24-46-18 Apple-131 RT
- 625+24-47-18 Apple-131 RT
- 625+24-48-18 Apple-131 RT
- 625+24-49-18 Apple-131 RT
- 625+24-50-18 Apple-131 RT
- 625+24-51-18 Apple-131 RT
- 625+24-52-18 Apple-131 RT
- 625+24-53-18 Apple-131 RT
- 625+24-54-18 Apple-131 RT
- 625+24-55-18 Apple-131 RT
- 625+24-56-18 Apple-131 RT
- 625+24-57-18 Apple-131 RT
- 625+24-58-18 Apple-131 RT
- 625+24-59-18 Apple-131 RT
- 625+24-60-18 Apple-131 RT
- 625+24-61-18 Apple-131 RT
- 625+24-62-18 Apple-131 RT
- 625+24-63-18 Apple-131 RT
- 625+24-64-18 Apple-131 RT
- 625+24-65-18 Apple-131 RT
- 625+24-66-18 Apple-131 RT
- 625+24-67-18 Apple-131 RT
- 625+24-68-18 Apple-131 RT
- 625+24-69-18 Apple-131 RT
- 625+24-70-18 Apple-131 RT
- 625+24-71-18 Apple-131 RT
- 625+24-72-18 Apple-131 RT
- 625+24-73-18 Apple-131 RT
- 625+24-74-18 Apple-131 RT
- 625+24-75-18 Apple-131 RT
- 625+24-76-18 Apple-131 RT
- 625+24-77-18 Apple-131 RT
- 625+24-78-18 Apple-131 RT
- 625+24-79-18 Apple-131 RT
- 625+24-80-18 Apple-131 RT
- 625+24-81-18 Apple-131 RT
- 625+24-82-18 Apple-131 RT
- 625+24-83-18 Apple-131 RT
- 625+24-84-18 Apple-131 RT
- 625+24-85-18 Apple-131 RT
- 625+24-86-18 Apple-131 RT
- 625+24-87-18 Apple-131 RT
- 625+24-88-18 Apple-131 RT
- 625+24-89-18 Apple-131 RT
- 625+24-90-18 Apple-131 RT
- 625+24-91-18 Apple-131 RT
- 625+24-92-18 Apple-131 RT
- 625+24-93-18 Apple-131 RT
- 625+24-94-18 Apple-131 RT
- 625+24-95-18 Apple-131 RT
- 625+24-96-18 Apple-131 RT
- 625+24-97-18 Apple-131 RT
- 625+24-98-18 Apple-131 RT
- 625+24-99-18 Apple-131 RT
- 625+24-100-18 Apple-131 RT
- 625+24-101-18 Apple-131 RT
- 625+24-102-18 Apple-131 RT
- 625+24-103-18 Apple-131 RT
- 625+24-104-18 Apple-131 RT
- 625+24-105-18 Apple-131 RT
- 625+24-106-18 Apple-131 RT
- 625+24-107-18 Apple-131 RT
- 625+24-108-18 Apple-131 RT
- 625+24-109-18 Apple-131 RT
- 625+24-110-18 Apple-131 RT

SEC. 1 LIBERTY TWP T. 4 N. R. 10 E.



**WOOD COUNTY**  
 W00-25- ( 5.82-13.60 )  
 LIMITED ACCESS  
**R/W PLANS**

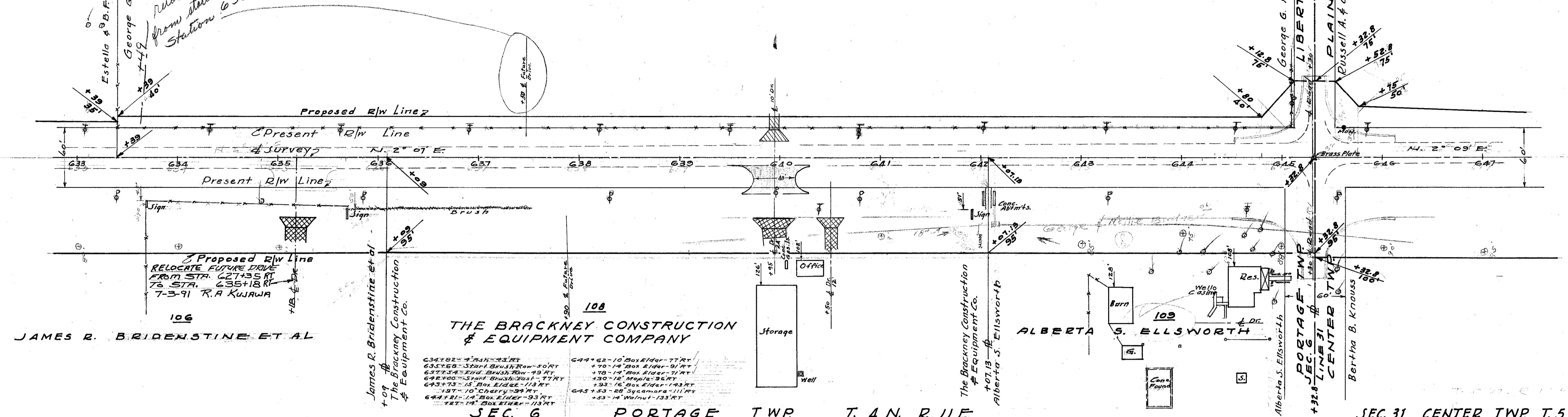
DATE FEB. 15-1950 DRAWN BY J.S. & R.P.  
 REVISED 4/25/50  
 LENGTH OF PROJECT  
 SEC. 36 PLAIN TWP T. 5 N. R. 10 E.

13  
17

107  
GEORGE G. MORRIS

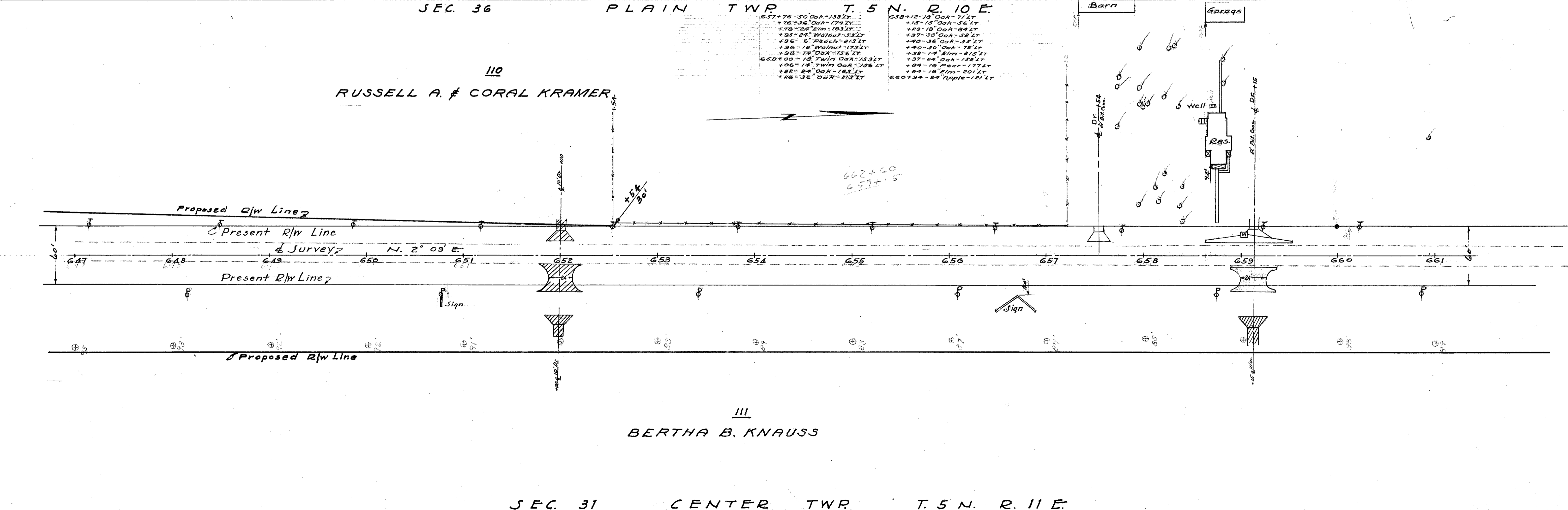
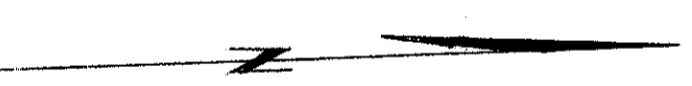


relocate future drive from station 637+50 to station 633+49 3/1/60 R.A. Kujawa



SEC. 6 PORTAGE TWP T. 4 N. R. 11 E.  
SEC. 36 PLAIN TWP T. 5 N. R. 10 E.

110  
RUSSELL A. & CORAL KRAMER



SEC. 31 CENTER TWP T. 5 N. R. 11 E.

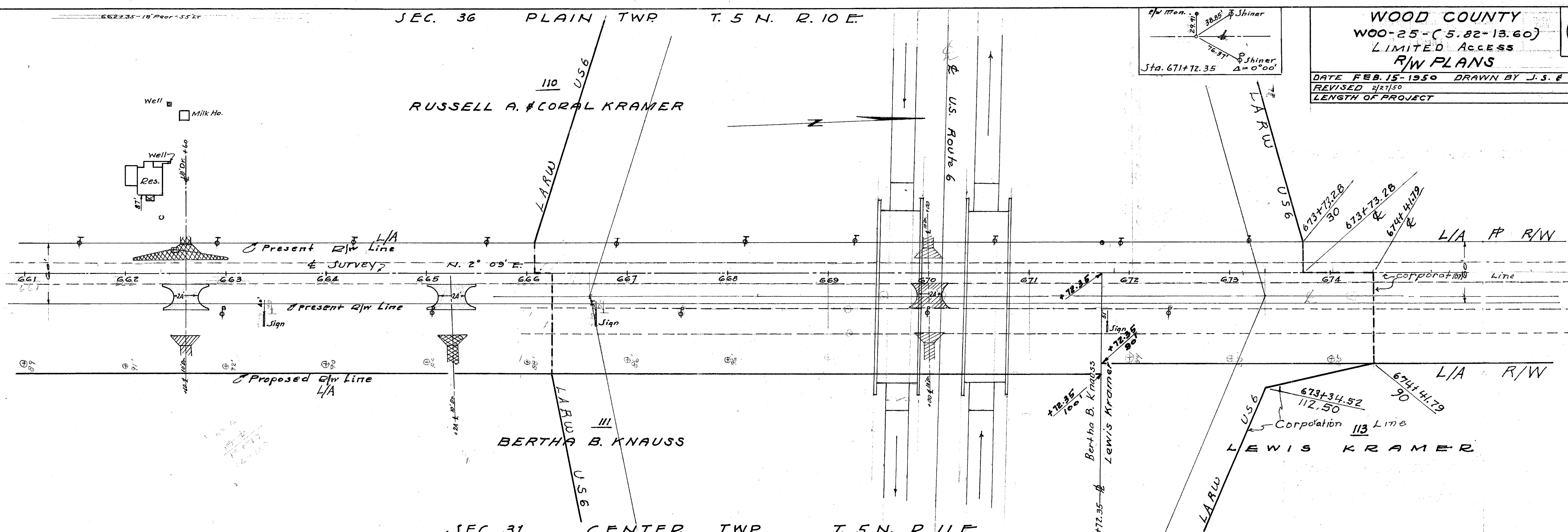
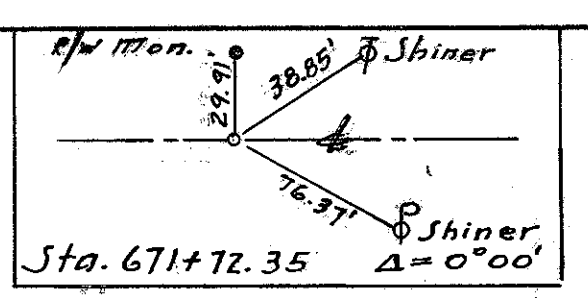


SEC. 36 PLAIN TWP T. 5 N. R. 10 E.

**WOOD COUNTY**  
 WOO-25-(5.82-13.60)  
 LIMITED ACCESS  
**R/W PLANS**

DATE FEB. 15-1950 DRAWN BY J.S. & R.P.  
 REVISED 2/21/50  
 LENGTH OF PROJECT

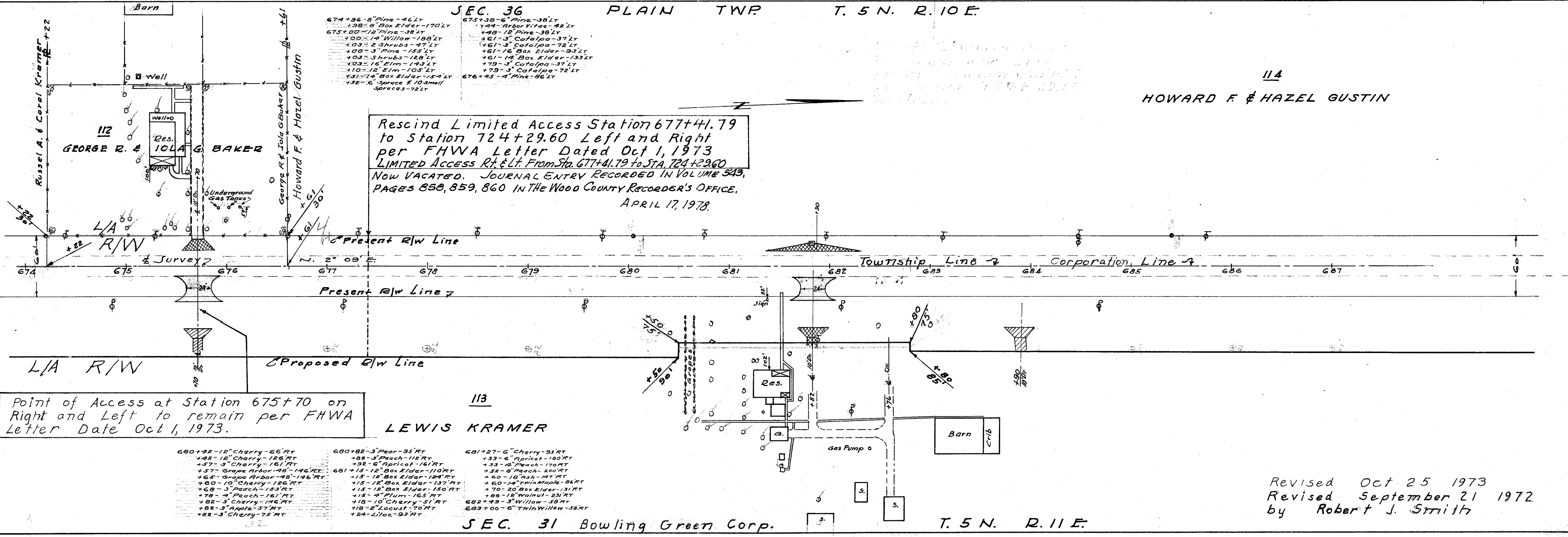
14  
17



SEC. 31 CENTER TWP T. 5 N. R. 11 E.  
SEC. 36 PLAIN TWP T. 5 N. R. 10 E.

- 674+36-5" Pine-46'Lt
- 675+00-12" Pine-38'Lt
- 675+00-14" Willow-188'Lt
- 675+00-2 Shrubs-49'Lt
- 675+00-3" Pine-155'Lt
- 675+00-5 Shrubs-128'Lt
- 675+00-16" Elm-143'Lt
- 675+00-12" Elm-105'Lt
- 675+00-14" Box Elder-154'Lt
- 675+00-16" Spruce & 10 Small Spruces-72'Lt
- 675+38-6" Pine-38'Lt
- 675+38-14" Box Elder-42'Lt
- 675+38-12" Pine-38'Lt
- 675+38-3" Catalpa-37'Lt
- 675+38-3" Catalpa-72'Lt
- 675+38-6" Box Elder-93'Lt
- 675+38-14" Box Elder-133'Lt
- 675+38-3" Catalpa-37'Lt
- 675+38-3" Catalpa-72'Lt
- 675+38-4" Pine-66'Lt

Rescind Limited Access Station 677+41.79 to Station 724+29.60 Left and Right per FHWA Letter Dated Oct 1, 1973 LIMITED ACCESS RT & LT From Sta. 677+41.79 to Sta. 724+29.60 Now VACATED. JOURNAL ENTRY RECORDED IN VOLUME 543, PAGES 858, 859, 860. IN THE WOOD COUNTY RECORDER'S OFFICE. APRIL 17, 1978.



Point of Access at Station 675+70 on Right and Left to remain per FHWA Letter Date Oct 1, 1973.

- 680+42-12" Cherry-66'RT
- 680+42-12" Cherry-186'RT
- 680+42-3" Cherry-181'RT
- 680+42-3" Grape Arbor-78'-146'RT
- 680+42-10" Cherry-126'RT
- 680+42-3" Peach-143'RT
- 680+42-3" Peach-161'RT
- 680+42-3" Apple-37'RT
- 680+42-3" Cherry-175'RT
- 680+82-3" Peach-95'RT
- 680+82-3" Peach-112'RT
- 680+82-6" Apple-161'RT
- 680+82-15-12" Box Elder-110'RT
- 680+82-15-18" Box Elder-124'RT
- 680+82-15-12" Box Elder-137'RT
- 680+82-3" Peach-150'RT
- 680+82-4" Plum-165'RT
- 680+82-10" Cherry-51'RT
- 680+82-3" Locust-70'RT
- 680+82-12" Loc-93'RT
- 681+27-6" Cherry-93'RT
- 681+27-6" Apple-180'RT
- 681+27-3" Peach-170'RT
- 681+27-3" Peach-350'RT
- 681+27-10" Ash-127'RT
- 681+27-60-14" Twin Maple-94'RT
- 681+27-15-12" Box Elder-131'RT
- 681+27-8-18" Walnut-231'RT
- 681+27-3" Willow-38'RT
- 681+27-10-6" Twin Willow-58'RT

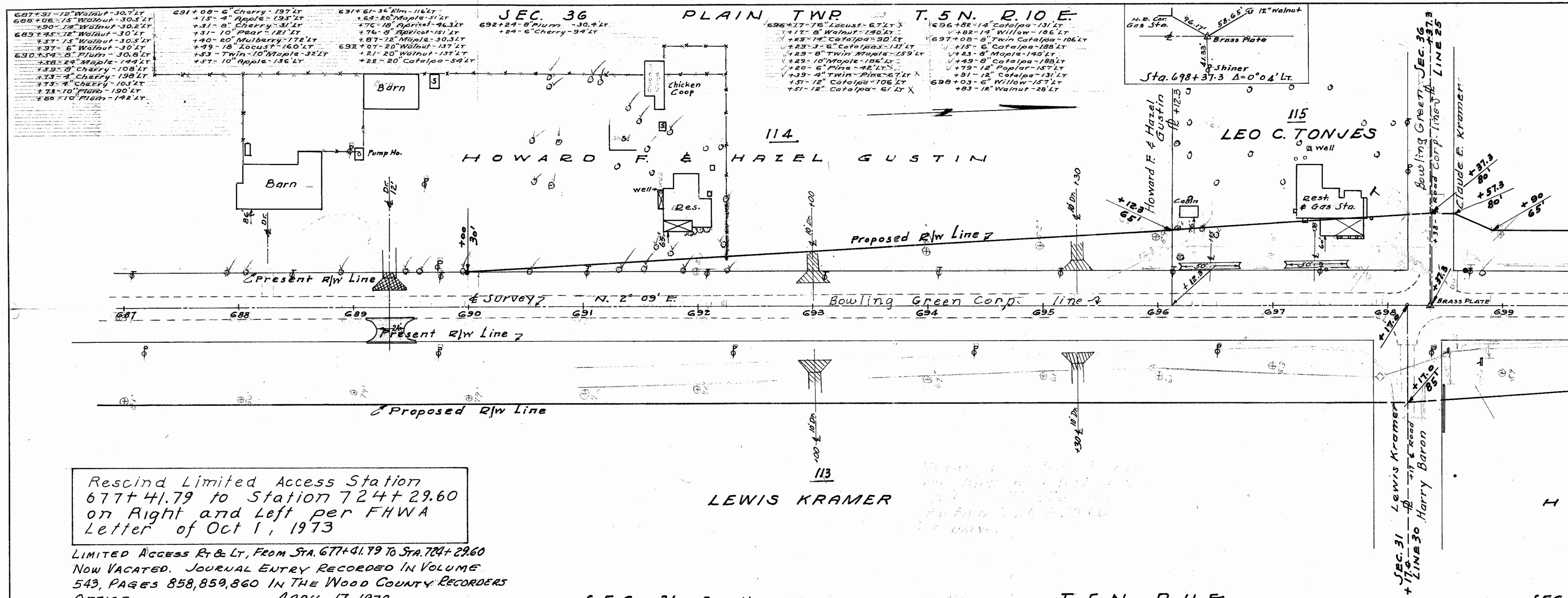
Revised Oct 25 1973  
 Revised September 21 1972  
 by Robert J. Smith

SEC. 31 Bowling Green Corp. T. 5 N. R. 11 E.



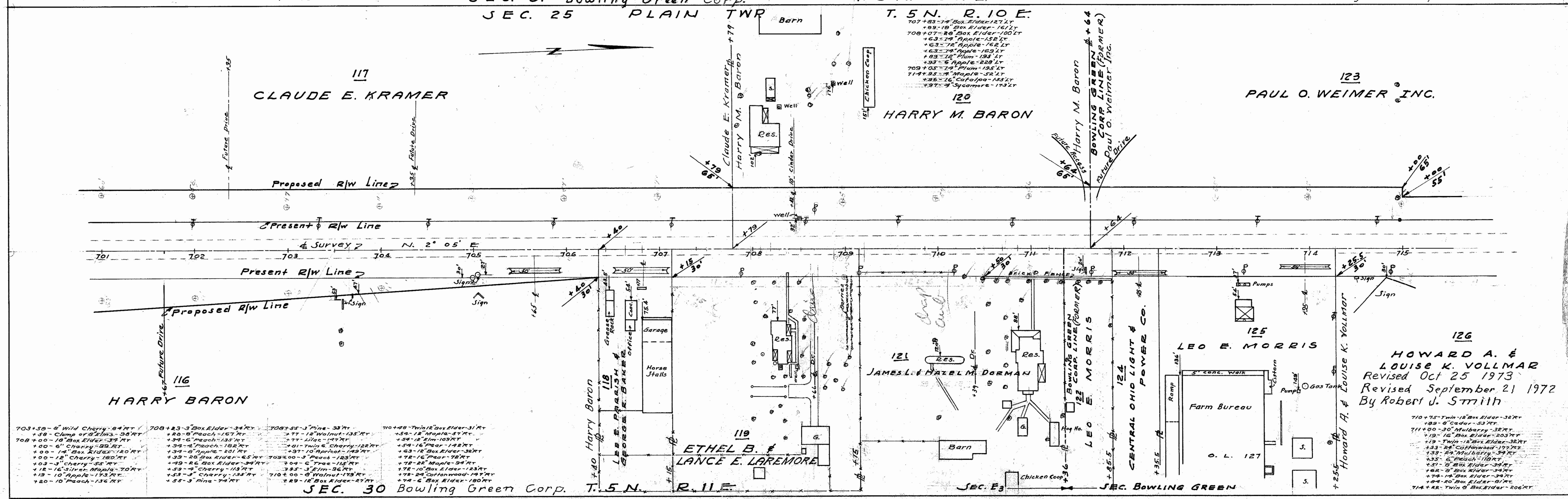
**WOOD COUNTY**  
**WOO-25-(5.82-13.60)**  
**LIMITED ACCESS**  
**R/W PLANS**

DATE FEB. 15-1960 DRAWN BY J.S. & R.P.  
 REVISED 4-10-50  
 LENGTH OF PROJECT  
 SEC. 25 Bowling Green T.5N. R.10E  
 Corp.



Rescind Limited Access Station  
 677+41.79 to Station 724+29.60  
 on Right and Left per FHWA  
 Letter of Oct 1, 1973

LIMITED Access Rt & Lt, From Sta. 677+41.79 to Sta. 704+29.60  
 Now VACATED. JOURNAL ENTRY RECORDED IN VOLUME  
 543, PAGES 858, 859, 860 IN THE WOOD COUNTY RECORDERS  
 OFFICE. APRIL 17, 1978



HOWARD A. &  
 LOUISE K. VOLLMAR  
 Revised Oct 25 1973  
 Revised September 21 1972  
 By Robert J. Smith

05 1  
 11+00  
 (7)+10

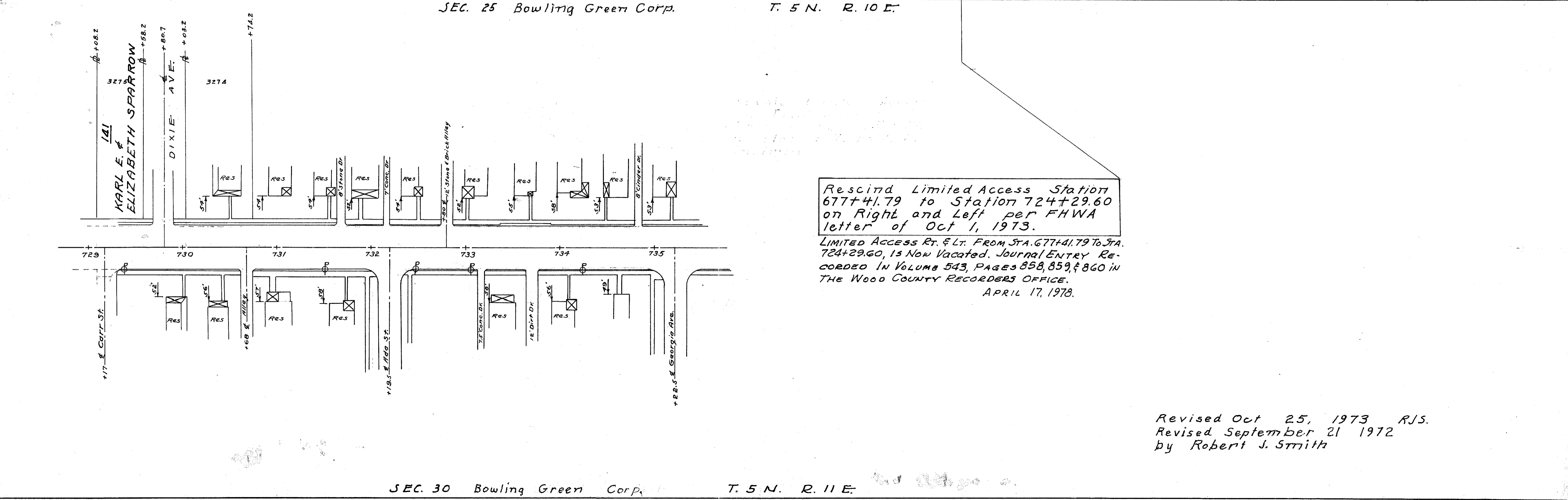
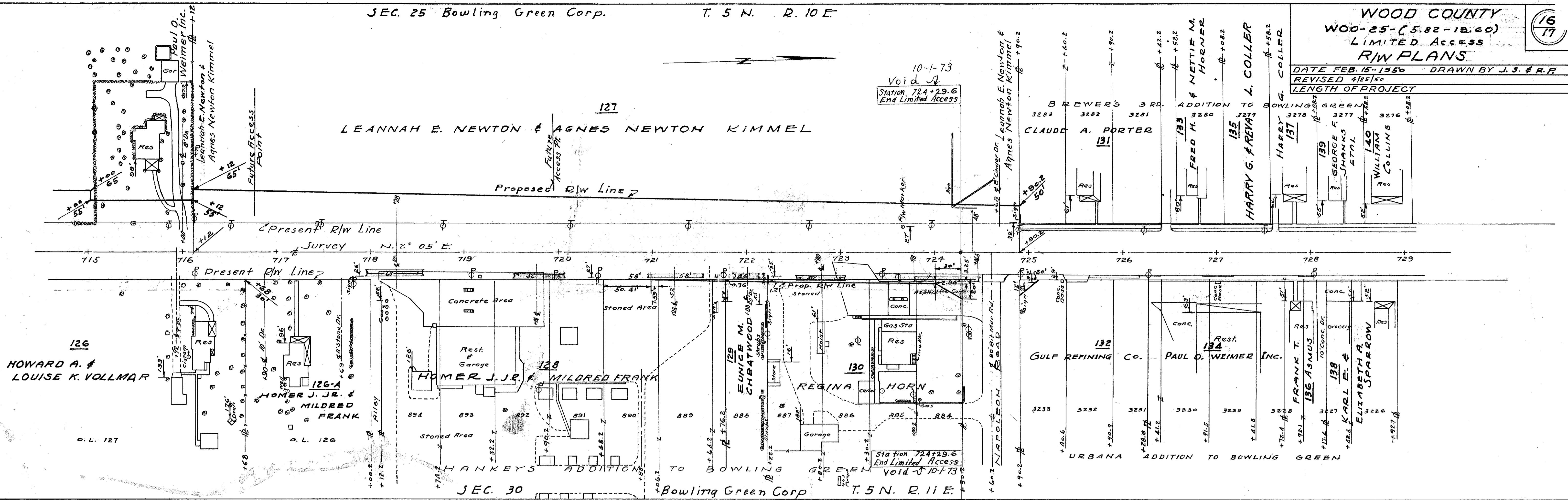


SEC. 25 Bowling Green Corp. T. 5 N. R. 10 E.

WOOD COUNTY  
WOO-25-(5.82-13.60)  
LIMITED ACCESS  
R/W PLANS

16  
17

DATE FEB. 15-1950 DRAWN BY J.S. & R.R.  
REVISED 4/25/50  
LENGTH OF PROJECT



Rescind Limited Access Station 677+41.79 to Station 724+29.60 on Right and Left per FHWA letter of Oct 1, 1973.  
LIMITED ACCESS RT. & LT. FROM STA. 677+41.79 TO STA. 724+29.60, IS NOW VACATED. JOURNAL ENTRY RECORDED IN VOLUME 543, PAGES 858, 859, & 860 IN THE WOOD COUNTY RECORDERS OFFICE.  
APRIL 17, 1978.

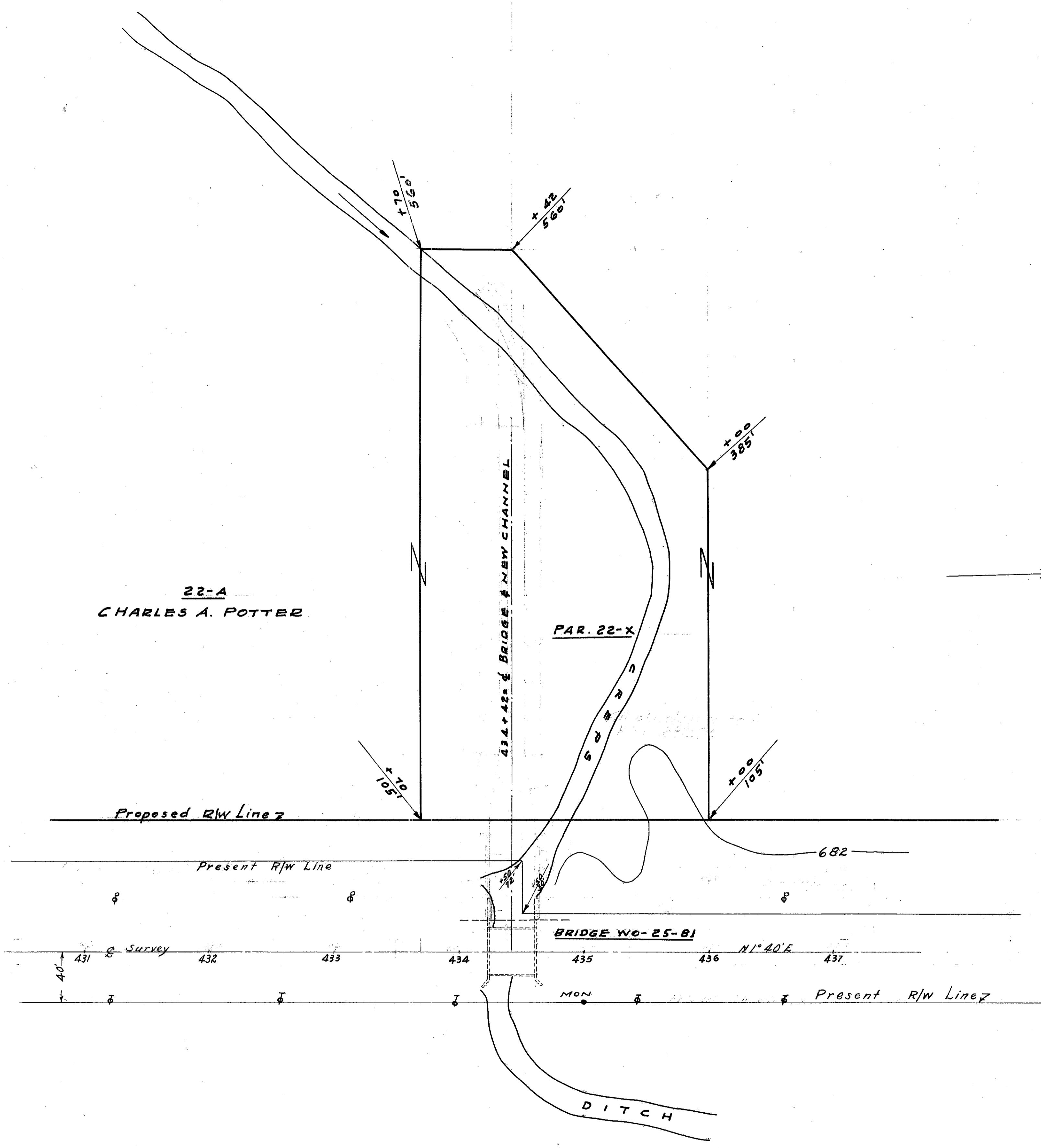
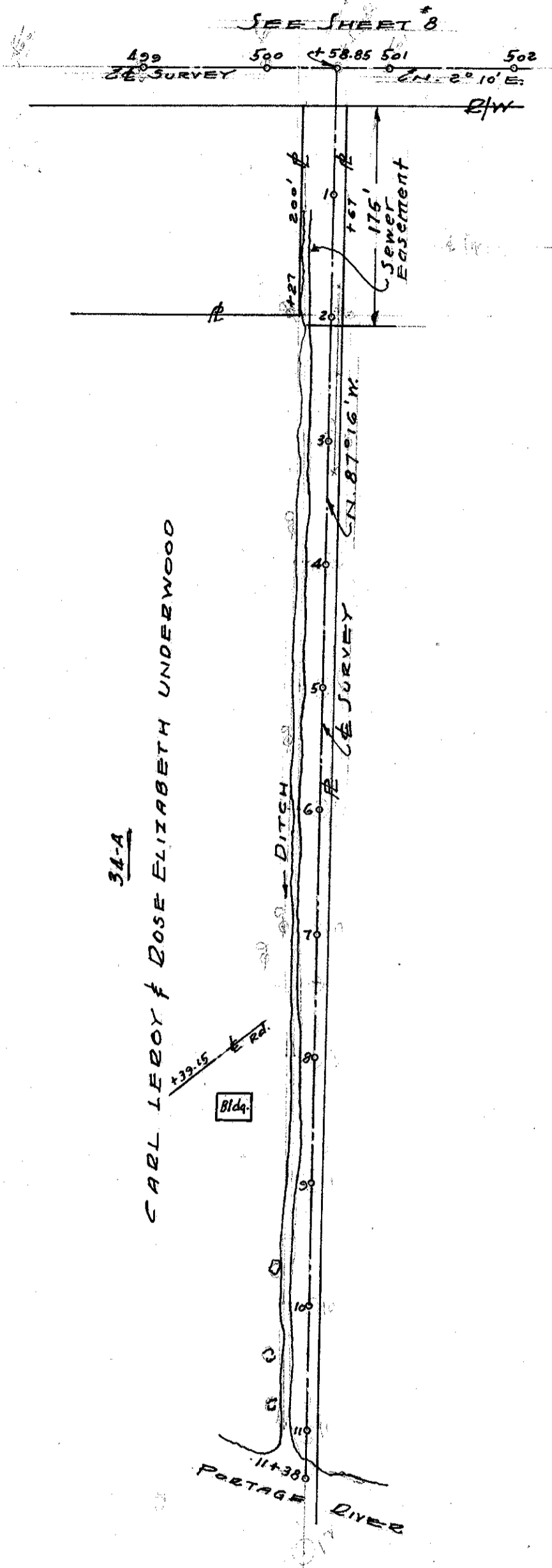
Revised Oct 25, 1973 RJS.  
Revised September 21 1972  
by Robert J. Smith

SEC. 30 Bowling Green Corp. T. 5 N. R. 11 E.

WOOD COUNTY  
WOO-25-(5.82-13.60)  
LIMITED ACCESS  
R/W PLANS

17  
17

DATE FEB. 15-1950 DRAWN BY J. S. F. R. R.  
REVISED 7/5/51  
LENGTH OF PROJECT



D-7R



**SR-25**

WOOD COUNTY  
S.H. 220- SEC. PORTAGE  
RIGHT / WAY

DATE AUG. 1 1938	DRAWN BY A.P.
REVISED	
LENGTH OF PROJECT	.568 MI.

*R/W OK as shown  
easement obtained  
F.J.F.  
4/15/44*

