

FED. AID DIST. NO.	STATE	FED. AID PROJECT	FISCAL YEAR	1/44
10	OHIO	608A	1931	

S.H.(I.C.H) 220 SEC. E-1

WOOD COUNTY
NET LENGTH PRO. NO. 1 - 20,708.63
PROPOSAL NO. 2 - BRIDGE

The Standard Specifications of the State of Ohio, Department of Highways, in force on date of contract will govern this improvement.

I hereby approve these plans and declare that the making of this improvement will require the closing to traffic of the Highway and that detours will be provided as shown on the plan and estimates.

STATE OF OHIO
DEPARTMENT OF HIGHWAYS
FINDLAY - BOWLING GREEN ROAD
S.H.(I.C.H) NO. 220 SEC. E-1 PET. NO. 6867
WOOD COUNTY
LIBERTY & PORTAGE TOWNSHIP

Approved Onton H. Jones
Date 5-10-'30 Resident District
Deputy Director

Approved John F. Fallis
Date 5-12-'30 Resident Division
Deputy Director

Approved H.P. Chapman
Date 6-2-30 Chief Engineer
Bureau of Construction

Approved _____
Date _____ Chief Engineer
Bureau of Maintenance

Approved J.P. Burkey
Date 6-2-30 Chief Engineer
Bureau of Bridges

Approved Frank R. Smith
Date 6-2-30 Chief Engineer and First
Asst. Director.

Approved Robert W. Waid
Date 6-2-30 Director of Highways

Recommended for Approval _____
Date _____ District Engineer
Bureau of Public Roads

Recommended for Approval _____
Date _____ Chief Engineer
Bureau of Public Roads

Approved _____
Date _____ Chief of Bureau

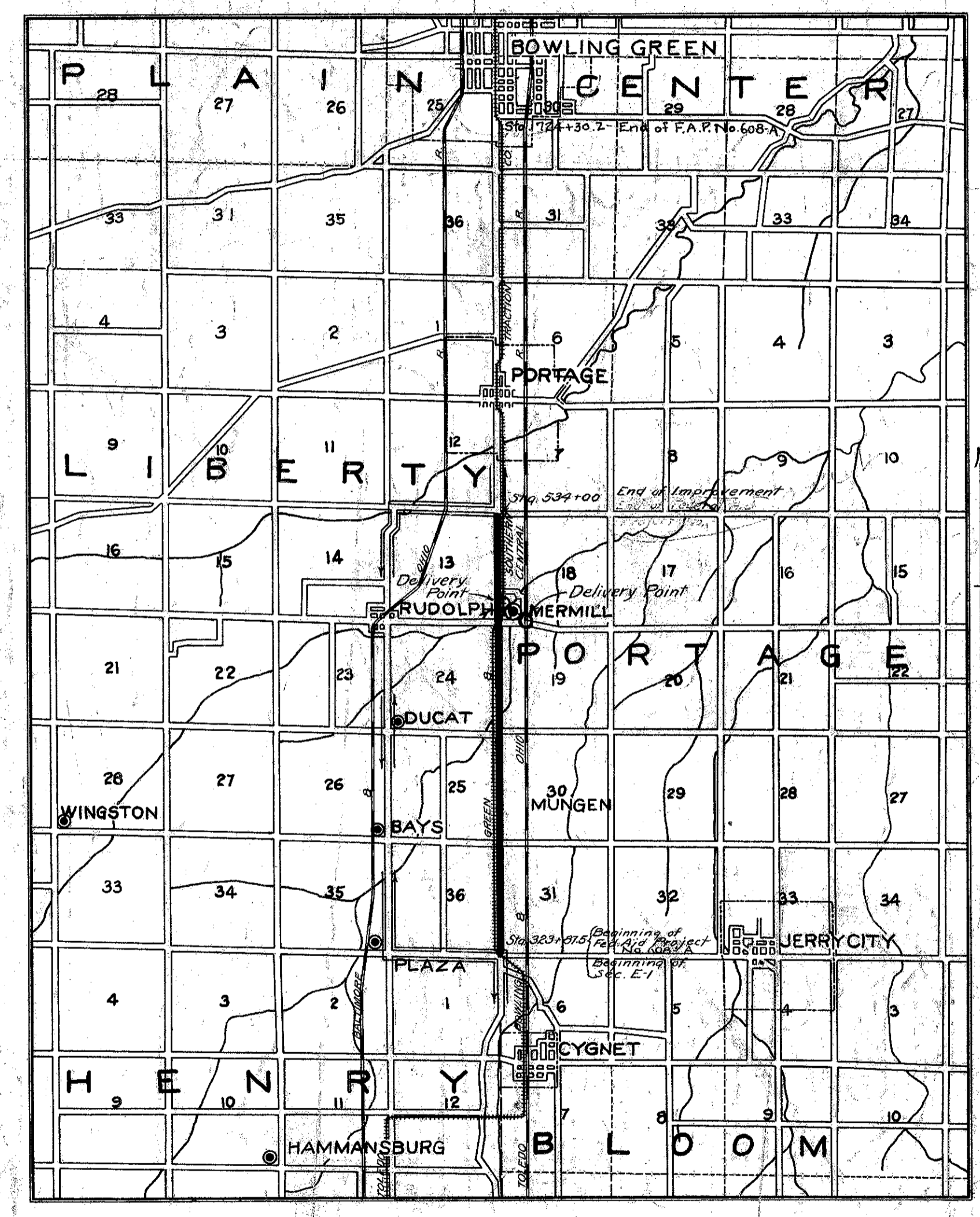
CONVENTIONAL SIGNS

State Line	_____
County Line	_____
Township Line	_____
Section Line	_____
Property Line not fenced	_____
Center Line	_____
City or Village Line	_____
Fence	_____
Telephone or Telegraph	T T T
Steam Railroad	_____
Electric Line	_____
Guard Rail	_____
Drain Pipe	_____

We, the commissioners of Wood County, hereby approve these plans and certify that the right-of-way 60 feet wide is available for the construction maintenance and repair of the above highway.

F. C. Fox
J. M. Beach
M. D. King

Date May 12, 1930 County Commissioners



LOCATION PLAN
SCALE OF MILES

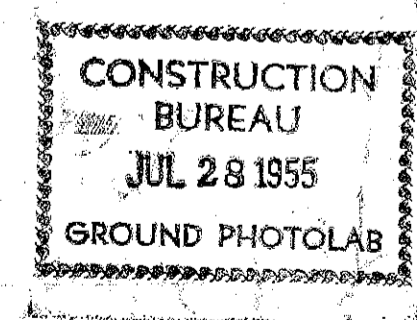
PORTION TO BE IMPROVED
DETOUR
IMPROVED ROADS
HAUL ROAD

SCALES

PLAN	1" = 50'
PROFILE VERTICAL	1" = 5'
PROFILE HORIZONTAL	1" = 50'
CROSS SECTIONS	1" = 5'

INDEX OF SHEETS

TITLE PAGE	1
TYPICAL CROSS SECTION	2
PLANS & PROFILE	3 - 17
CROSS SECTIONS	18 - 35
STRUCTURAL PLANS	36 - 42
SUMMARY SHEET	43 - 44



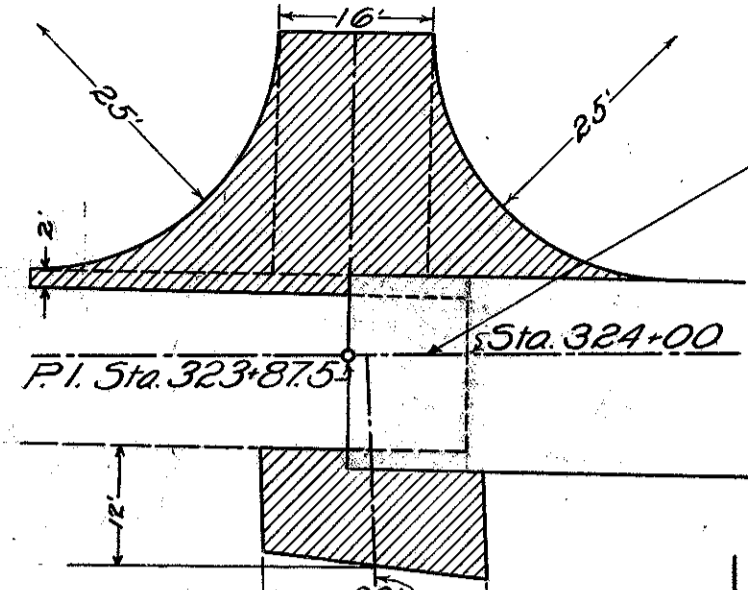
SUPPLEMENTAL PRINTS OF STRUCTURAL STANDARDS
DRAWINGS NO. 95, 96, 98, 300, 305, B-36-2430, A3-2430, RR-1.

FED. AID DIST. NO.	STATE	FED. AID PROJ. NO.	FISCAL YEAR
10	OHIO	608A	1931

3
44

S.H.(I.C.H.) 220 SEC. E-1
WOOD COUNTY

DETAIL OF INTERSECTION
STA. 323+87.5



Add 76.5 Sq. Yds. of 8" Conc. Pavement for 2-25' R-corners, 1-16' x 25' Approach, 1 strip 2' x 4.5' x 8' 2-6.55 Sq. Yds. for approach 23' wide between pave. & approach slab on bridge.

Beginning of Federal Aid Project No. 608-A
Sta. 323+87.5
Beginning of Section E-1
HENRY TWP.
LIBERTY TWP.

Sta 323+87.5 - Sta 324+0. Remove old concrete pavement. Included in excavation.

Sta. 323+87
18 tons No. 2 and 7 stone req'd for backfill over sewer.

Sta. 323+87 Remove present stone structure. Build new Std. 30" x 40" Reint. Conc. Pipe Side Road Culvert with Std. Headwalls. Drawing No. 300. See detail drawing sheet No. 36.

Top to be broken down and culvert filled up. Included under excavation.

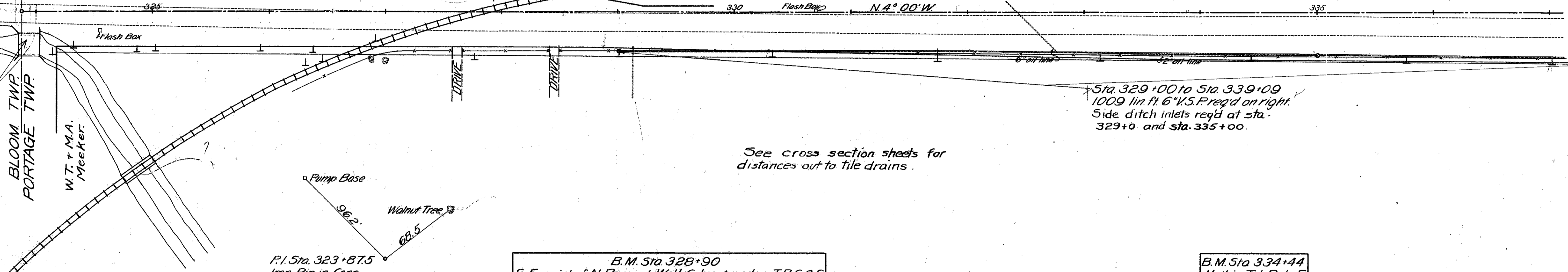
Deduct 60.3 Sq. Yds. of pavement for R.R. crossing. 6188 X 8.
27.15 lin. ft.

Fill present R.R. culvert as much as possible. Included in excavation.

Sta. 330+00 to 339+09
909 lin. ft. of 6" V.S.P. req'd on left with side ditch inlets Sta. 330+00, and at Sta. 335+00

Sta. 329+00 to Sta. 339+09
1009 lin. ft. 6" V.S.P. req'd on right. Side ditch inlets req'd at sta. 329+0 and sta. 335+00.

See cross section sheets for distances out to tile drains.



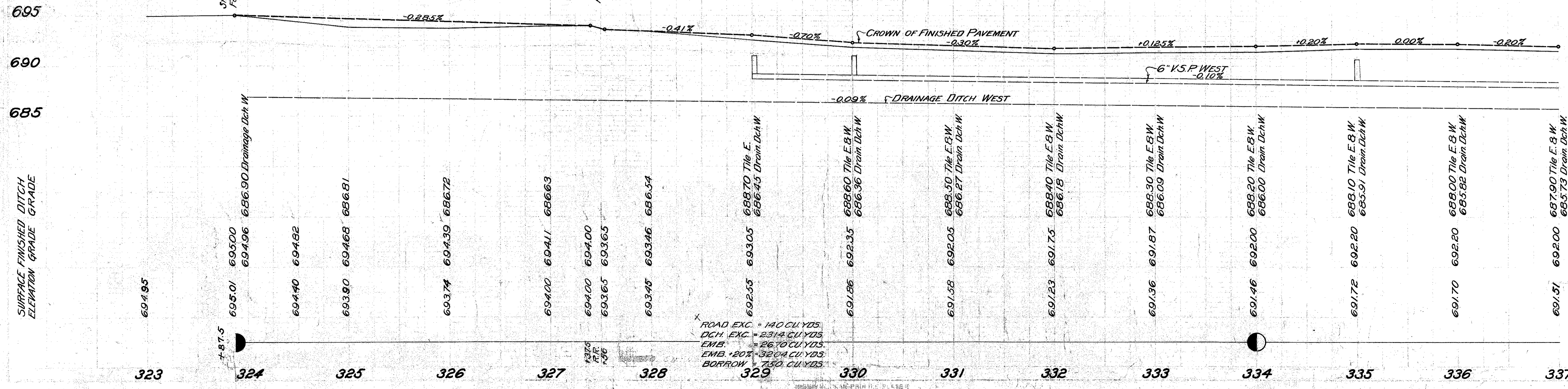
B.M. Sta. 324+03
N. point N.E. Wing Present Br.
El. 694.58

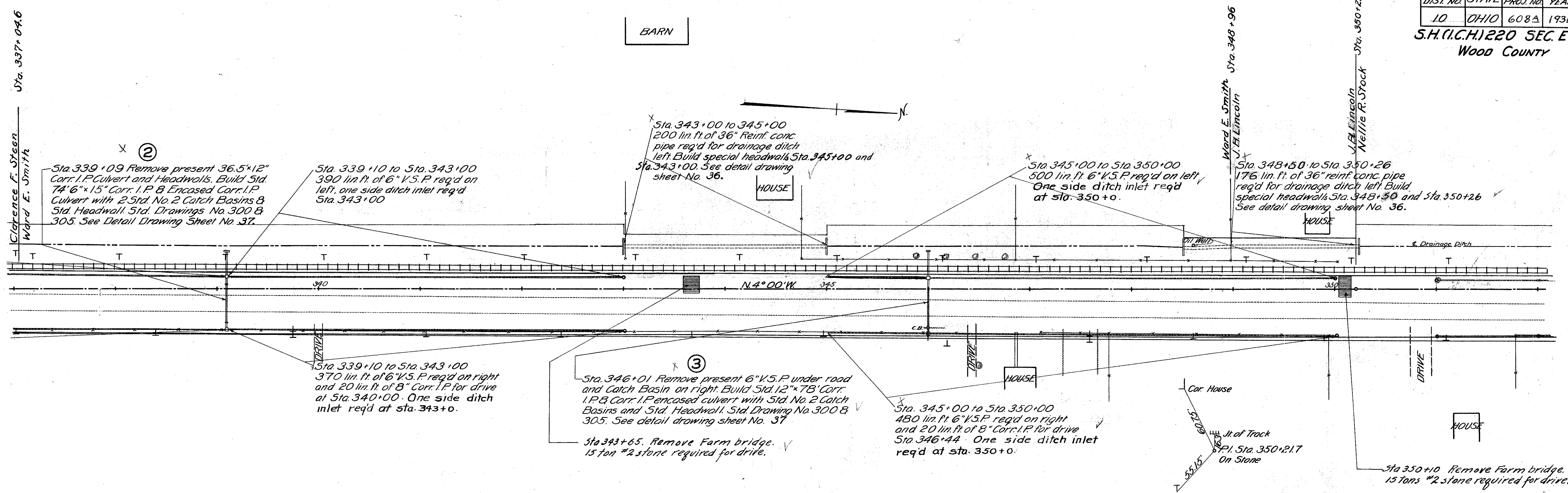
P.I. Sta. 323+87.5
Iron Pin in Conc.

B.M. Sta. 328+90
S.E. point of N. Parapet Wall Culvert under T.B.G. & S.
El. 692.99

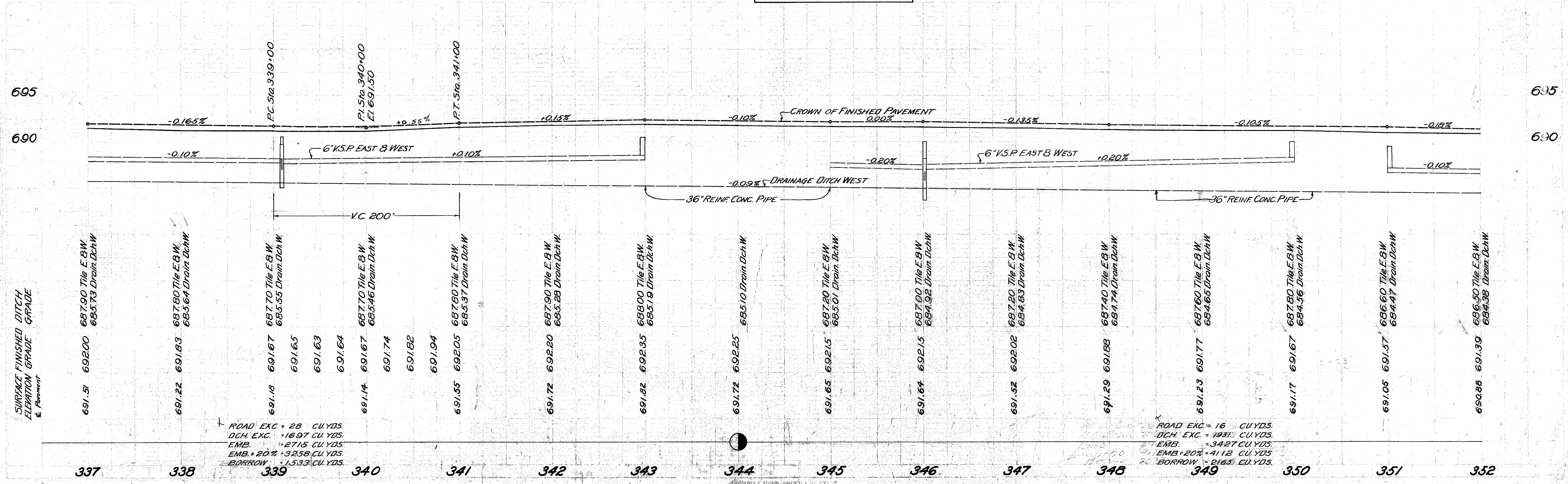
B.M. Sta. 334+44
Nail in Tel. Pole E.
El. 690.95

Note - Grade given is crown of finished pavement.





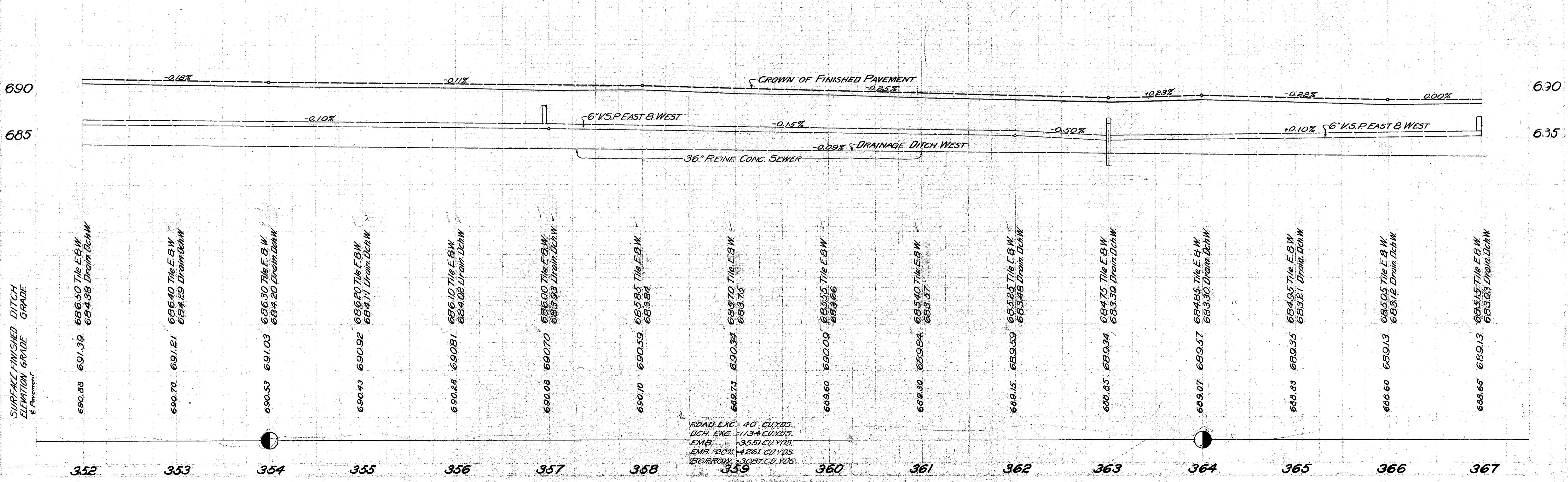
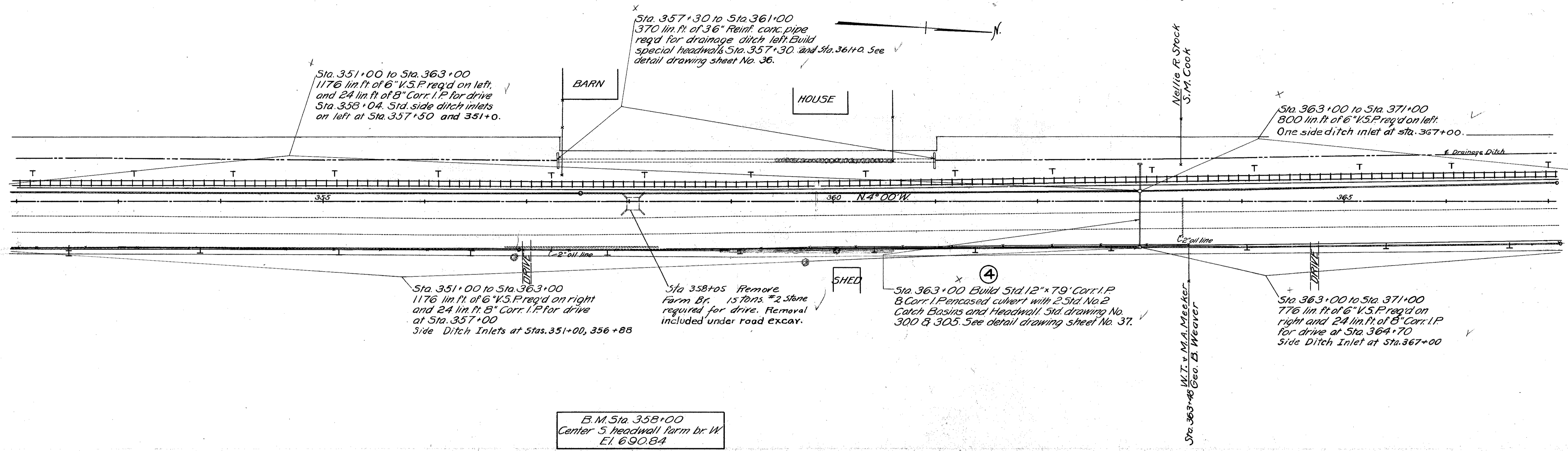
B.M. Sta. 347+10
Nail in trolley pole west stop 41
E1.69183



FED. AID DIST. NO.	STATE	FED. AID PROJ. NO.	FISCAL YEAR
10	OHIO	608A	1931

5
44

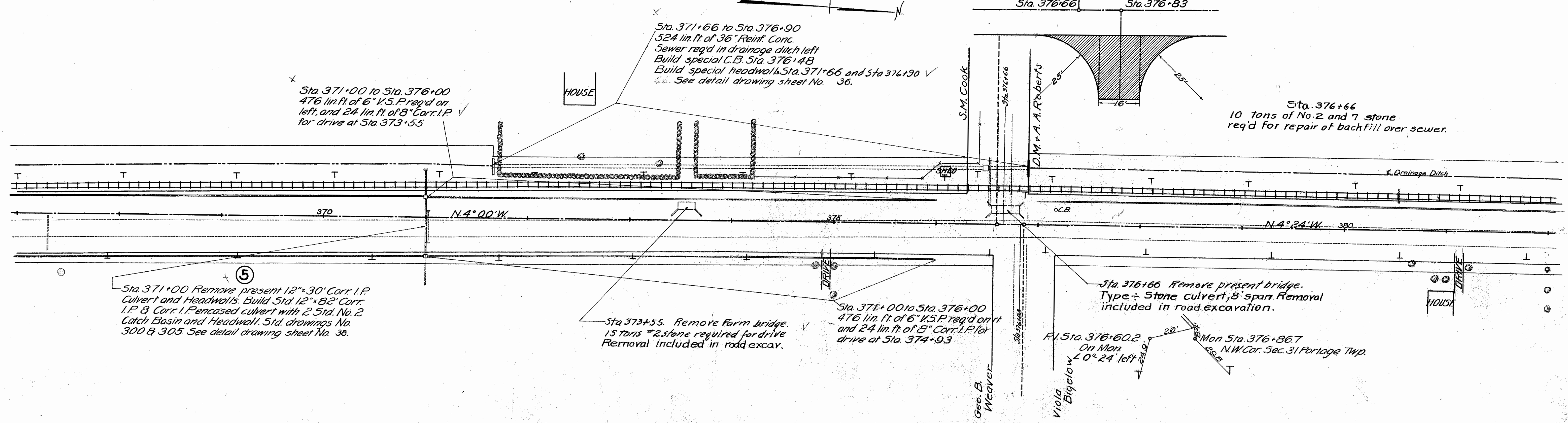
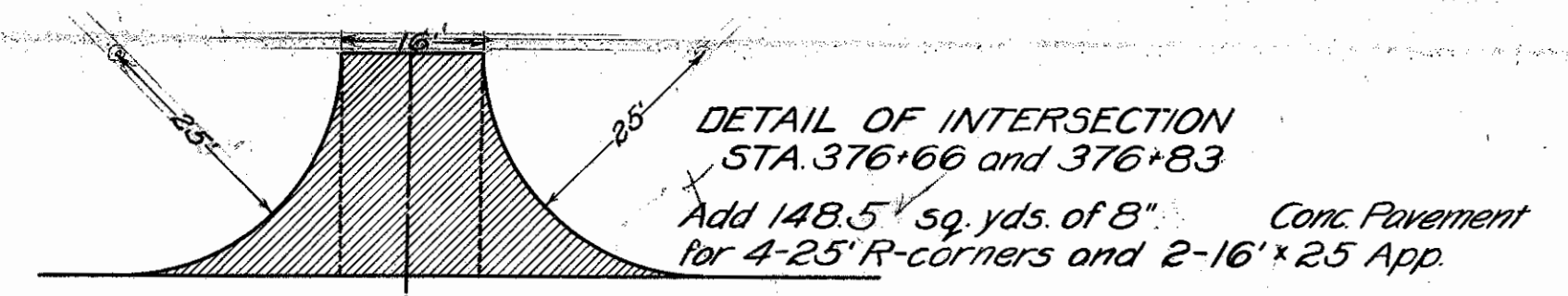
S.H.(I.C.H.) 220 SEC. E-1
WOOD COUNTY



FED. AID DIST. NO.	STATE	FED. AID PROJECT	FISCAL YEAR
10	OHIO	608A	1931

6
44

S.H.(I.C.H) 220 SEC. E-1
WOOD COUNTY



Sta. 371+00 to Sta. 376+00
476 lin. ft. of 6" V.S.P req'd on left, and 24 lin. ft. of 8" Corr. I.P. for drive at Sta. 373+55

Sta. 371+66 to Sta. 376+90
524 lin. ft. of 36" Reinf. Conc.
Sewer req'd in drainage ditch left
Build special C.B. Sta. 376+48
Build special headwalls Sta. 371+66 and Sta. 376+90
See detail drawing sheet No. 36.

Sta. 376+66
10 tons of No. 2 and 7 stone req'd for repair of backfill over sewer.

Sta. 371+00 Remove present 12"x30' Corr. I.P. Culvert and Headwalls. Build 51d. 12"x82' Corr. I.P. & Corr. I. Encased culvert with 2.51d. No. 2 Catch Basin and Headwall. Std. drawings No. 300 & 305. See detail drawing sheet No. 36.

Sta. 373+55. Remove Farm bridge. 15 tons #2 stone required for drive. Removal included in road excav.

Sta. 371+00 to Sta. 376+00
476 lin. ft. of 6" V.S.P req'd on right and 24 lin. ft. of 8" Corr. I.P. for drive at Sta. 374+93

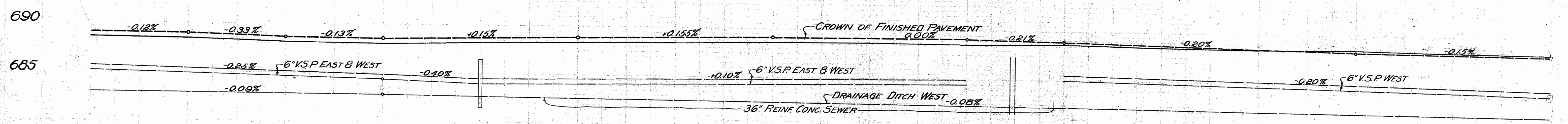
Sta. 376+66 Remove present bridge. Type - Stone culvert, 8' span. Removal included in road excavation.

Sta. 376+60.2 On Mon. L 0° 24' left
Sta. 376+86.7 On Mon. N.W. Cor. Sec. 31 Portage Twp.

B.M. Sta. 373+47
S.W. pt. S.W. wing farm br.
E1.689.38

B.M. Sta. 376+42
Nail in trolley pole Sta. 43
E1.688.05

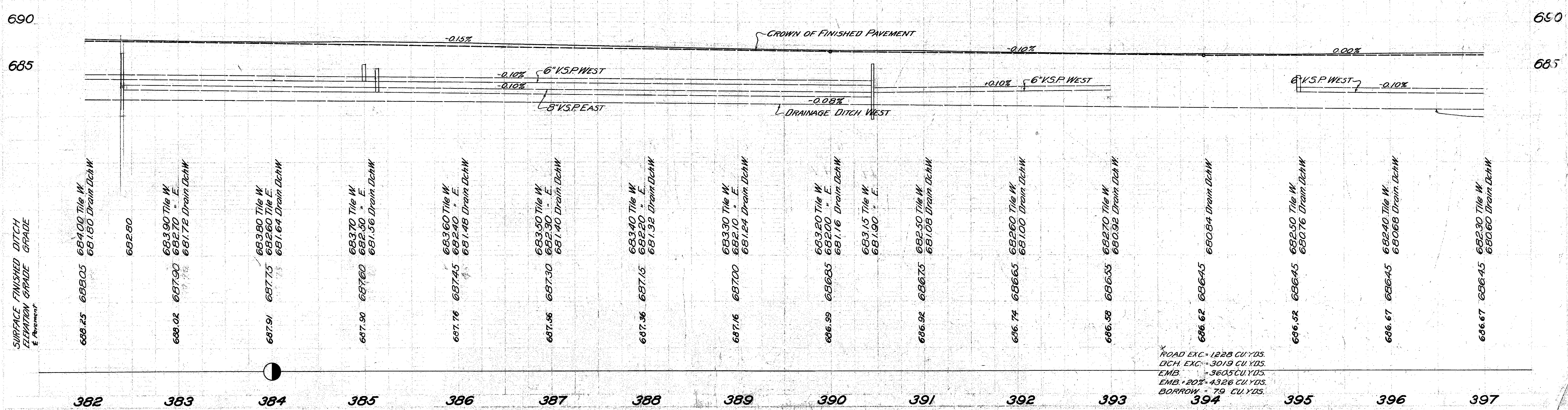
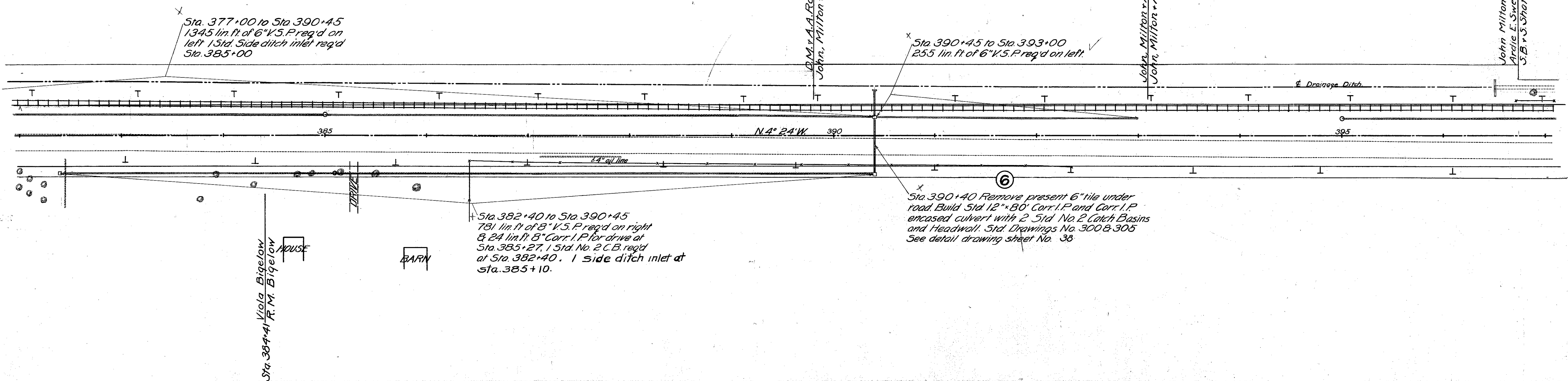
B.M. Sta. 376+82
N.W. pt. N.W. wing br. Boys Rd.
E1.690.28



Station	Surface Finished Ditch Elevation	Finished Pavement Elevation	Grade
367	688.65	689.03	685.15 Tile E.B.W.
368	688.51	689.01	682.94 Drain Dch W
369	688.18	688.68	684.65 Tile E.B.W.
370	688.05	688.55	682.85 Drain Dch W
371	688.22	688.70	684.40 Tile E.B.W.
372	688.35	688.85	682.76 Drain Dch W
373	688.45	688.90	684.00 Tile E.B.W.
374	688.67	689.16	682.68 Drain Dch W
375	688.67	689.16	684.30 Tile E.B.W.
376	688.60	689.16	682.44 Drain Dch W
377	688.63	689.95	684.40 Tile E.B.W.
378	688.52	688.75	682.36 Drain Dch W
379	688.45	688.55	684.50 Tile E.B.W.
380	688.50	688.35	682.28 Drain Dch W
381	688.40	688.20	684.60 Tile W
382	688.25	688.05	682.04 Drain Dch W
			681.96 Drain Dch W
			684.40 Tile W
			681.88 Drain Dch W
			684.00 Tile W
			681.80 Drain Dch W

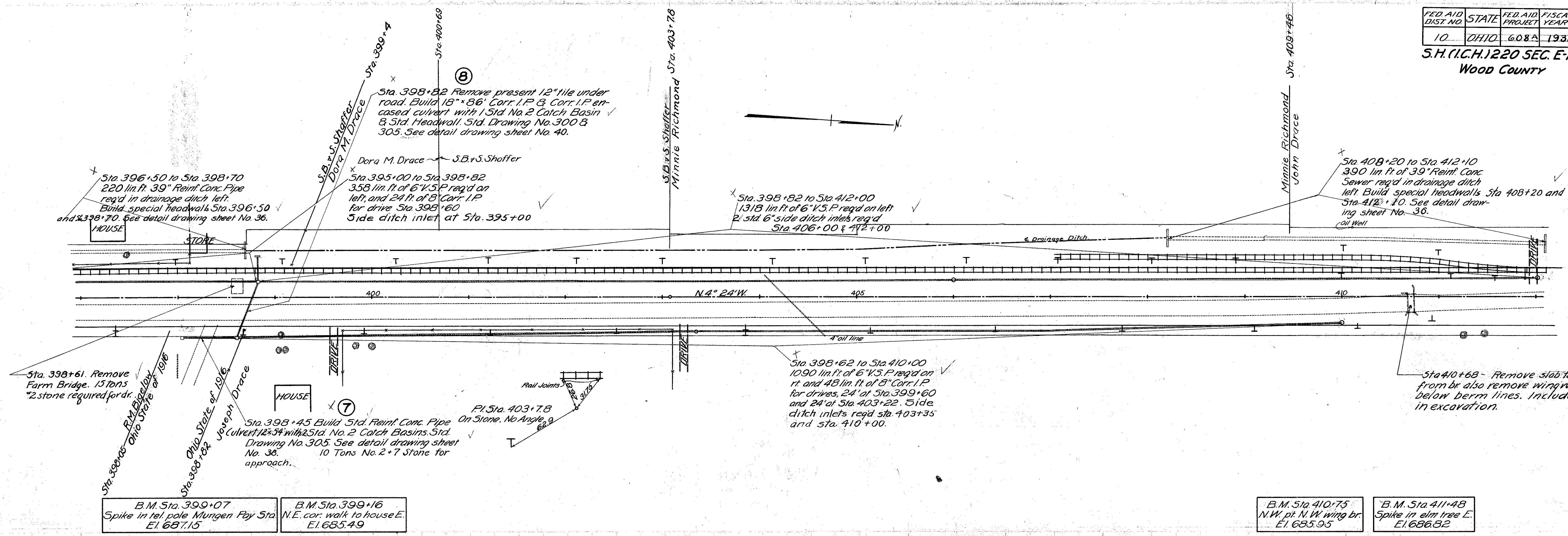
ROAD EXC. = 28 CU.YDS.
DCH. EXC. = 1212 CU.YDS.
EMB. = 2947 CU.YDS.
EMB + 20% = 3536 CU.YDS.
BORROW = 2296 CU.YDS.

ROAD EXC. = 380 CU.YDS.
DCH. EXC. = 1144 CU.YDS.
EMB. = 2893 CU.YDS.
EMB + 20% = 3472 CU.YDS.
BORROW = 1948 CU.YDS.



ROAD EXC. - 1228 CU. YDS.
DCH. EXC. - 3019 CU. YDS.
EMB. - 3605 CU. YDS.
EMB. + 20% - 4326 CU. YDS.
BORROW - 79 CU. YDS.

FOR ANY QUESTIONS PLEASE CONTACT GDOT DISTRICT 2 REAL ESTATE AT 419-353-8731

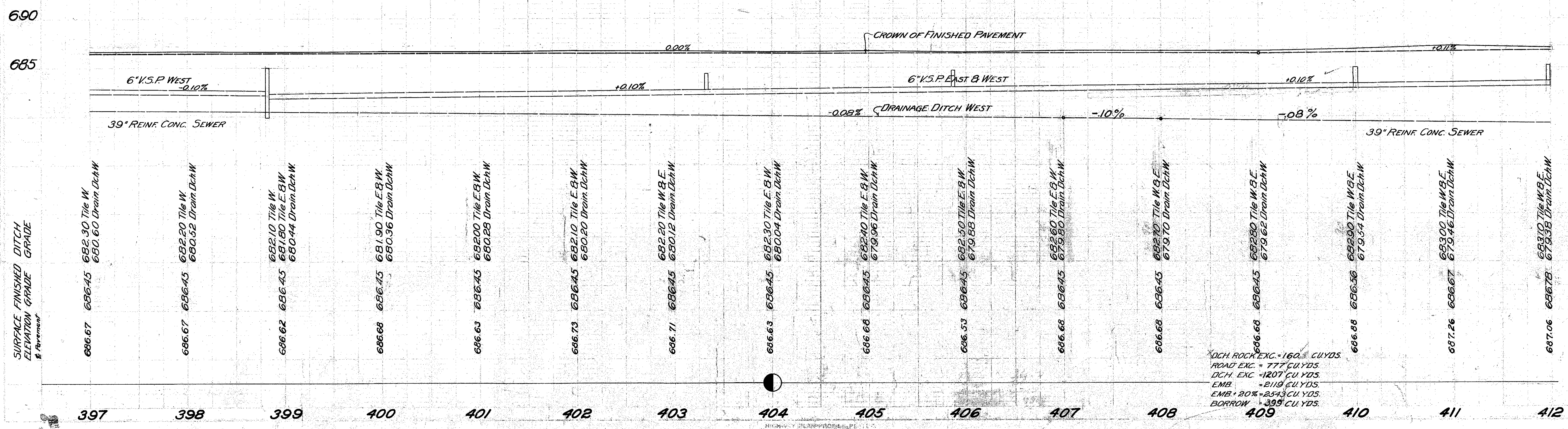


B.M. Sta. 399+07
Spike in tel. pole Mungen Fay Sta. El. 687.15

B.M. Sta. 399+16
N.E. cor. walk to house E. El. 685.49

B.M. Sta. 410+75
N.W. pt. N.W. wing br. El. 685.95

B.M. Sta. 411+48
Spike in elm tree E. El. 686.32

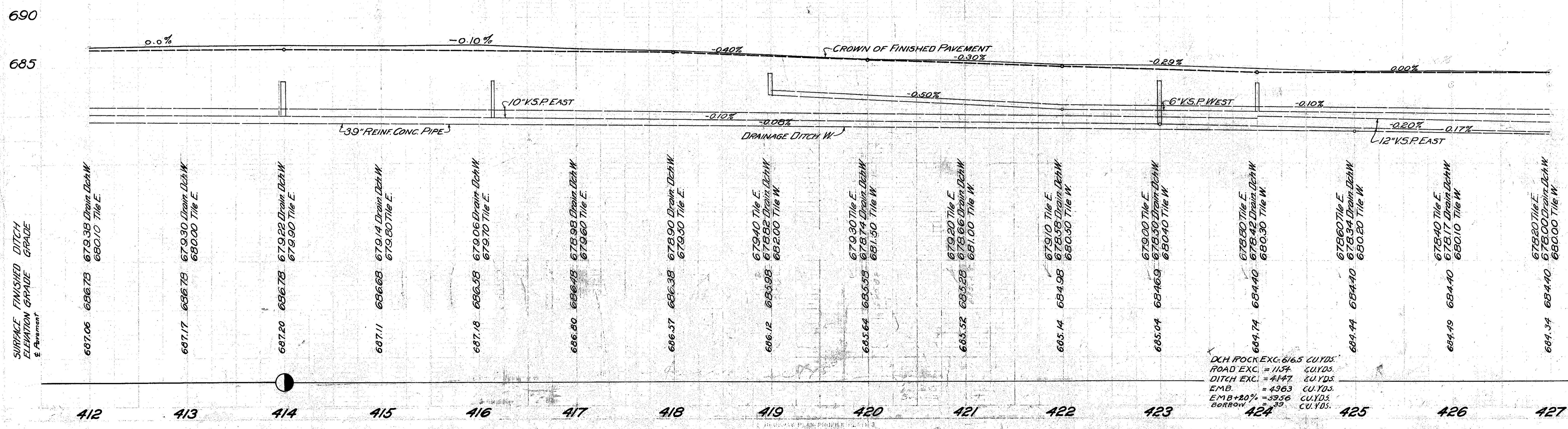
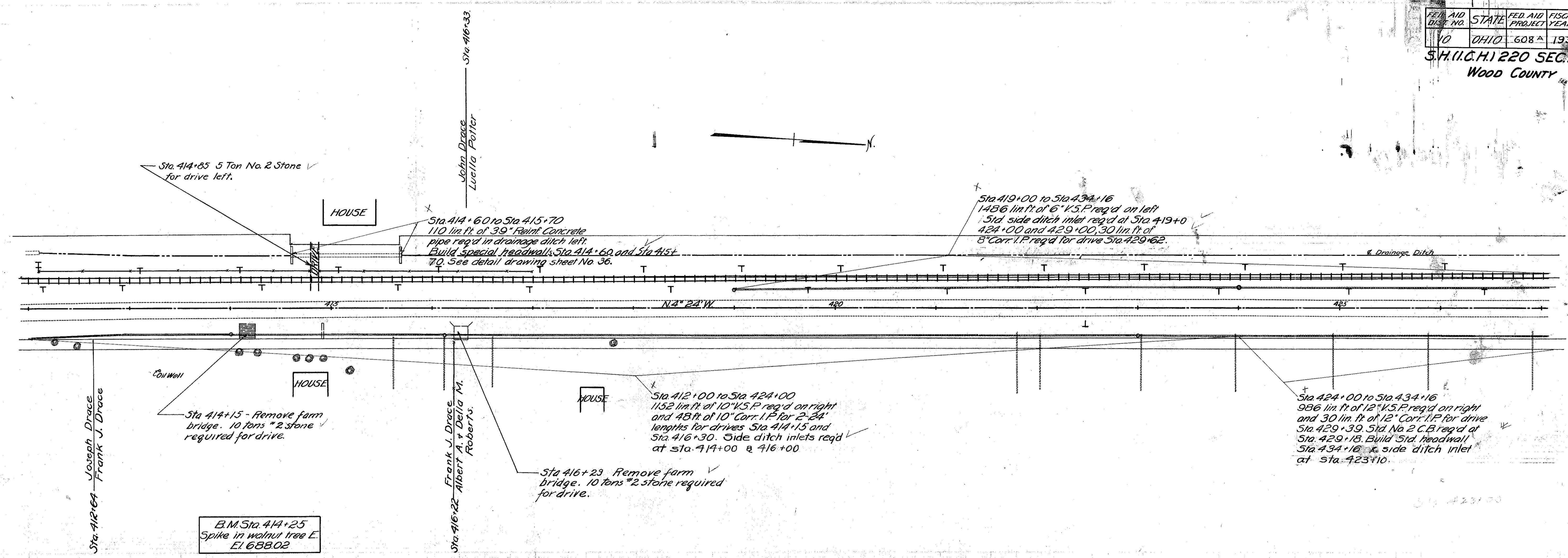


100% ROCK EXC. - 160 CU YDS.
ROAD EXC. - 777 CU YDS.
DCH. EXC. - 1207 CU YDS.
EMB. - 2118 CU YDS.
EMB. @ 20% - 2543 CU YDS.
BORROW - 399 CU YDS.

FED. AID DIST. NO.	STATE	FED. AID PROJECT	FISCAL YEAR
10	OHIO	608 A	1931

9
44

S.H.(I.C.H.) 220 SEC-E-1
WOOD COUNTY



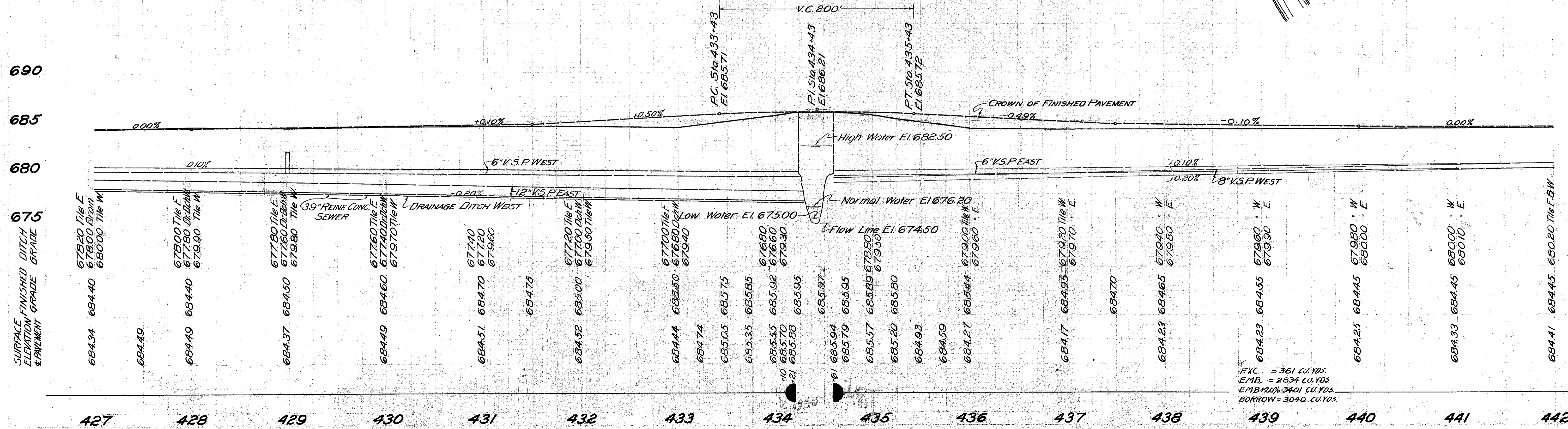
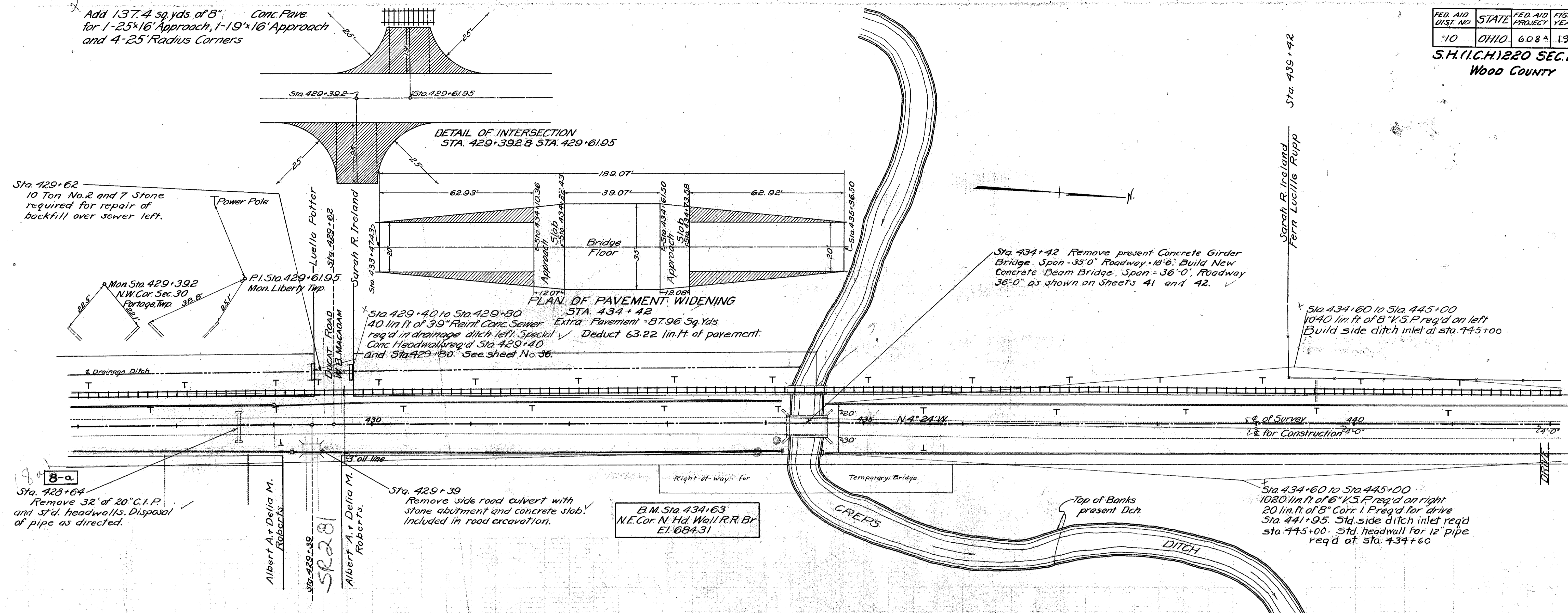
DCH ROCK EXC. 6165 CU.YDS.
ROAD EXC. = 1154 CU.YDS.
DITCH EXC. = 4147 CU.YDS.
EMB. = 4963 CU.YDS.
EMB+20% = 5956 CU.YDS.
BORROW = 39 CU.YDS.

FOR ANY QUESTIONS PLEASE CONTACT ODOT DISTRICT 2 REAL ESTATE AT 419-353-8131

FED. AID DIST. NO.	STATE	FED. AID PROJECT	FISCAL YEAR
10	OHIO	608A	1931

10
44

S.H.(I.C.H.)220 SEC.E-1
WOOD COUNTY



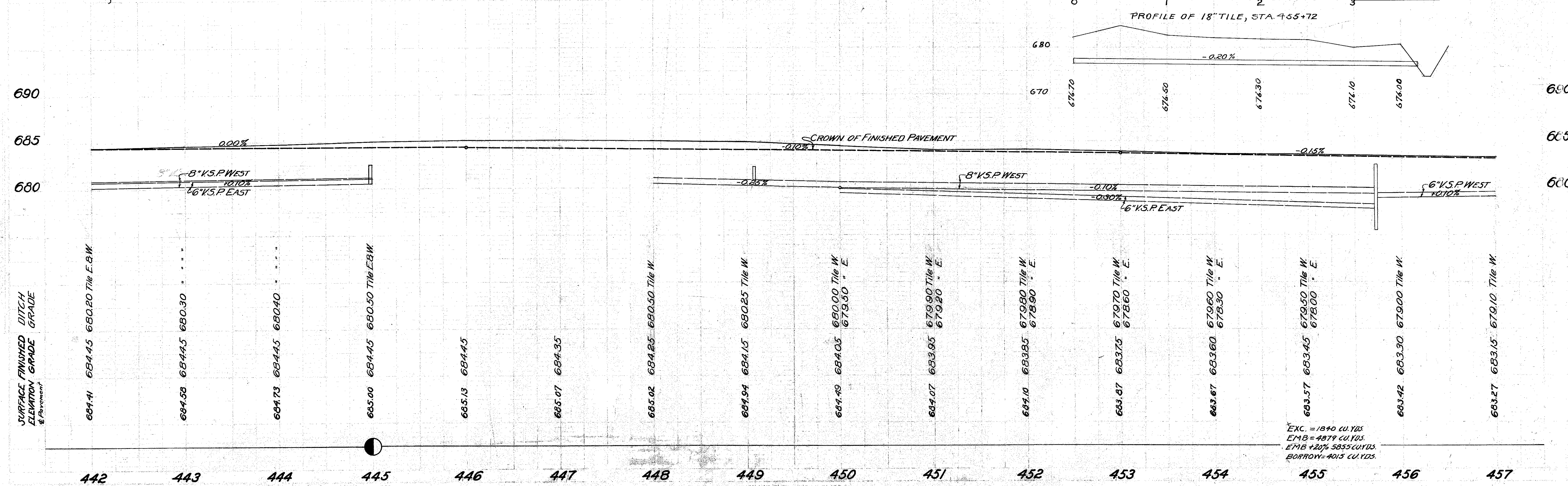
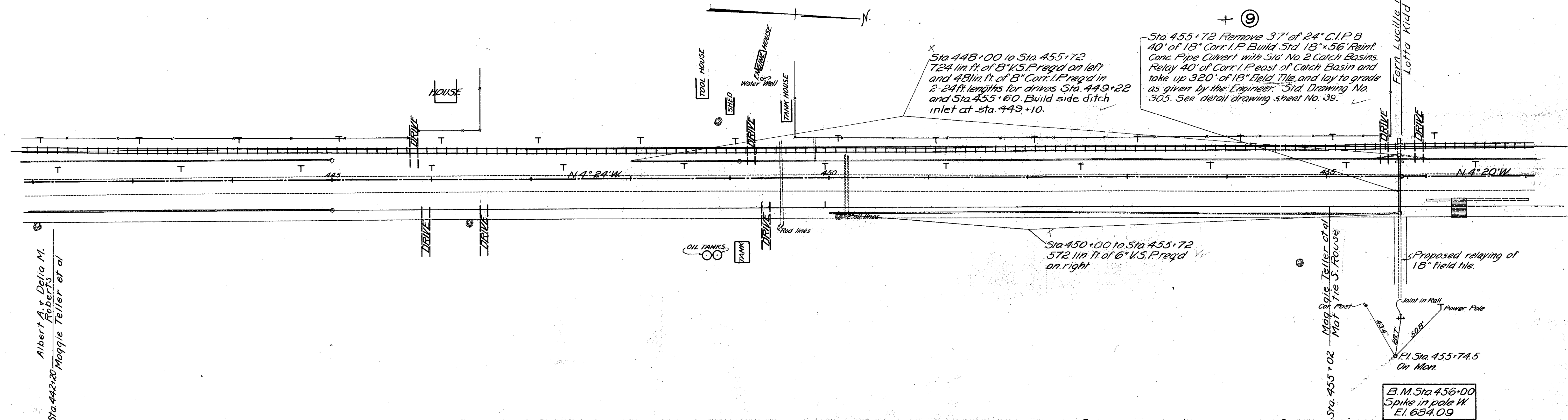
Exc. = 361 cu. yds.
Emb. = 2834 cu. yds.
EMB+20% = 3401 cu. yds.
BORROW = 3040 cu. yds.

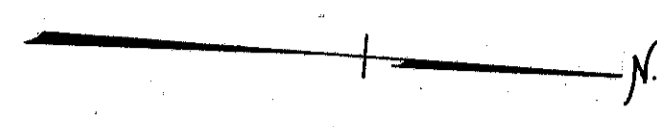
FOR ANY QUESTIONS PLEASE CONTACT ODOT DISTRICT 2 REAL ESTATE AT 419-353-8131

FED. AID DIST. NO.	STATE	FED. AID PROJECT	FISCAL YEAR
10	OHIO	608A	1931

11
44

S.H.(I.C.H.) 220 SEC. E-1
WOOD COUNTY



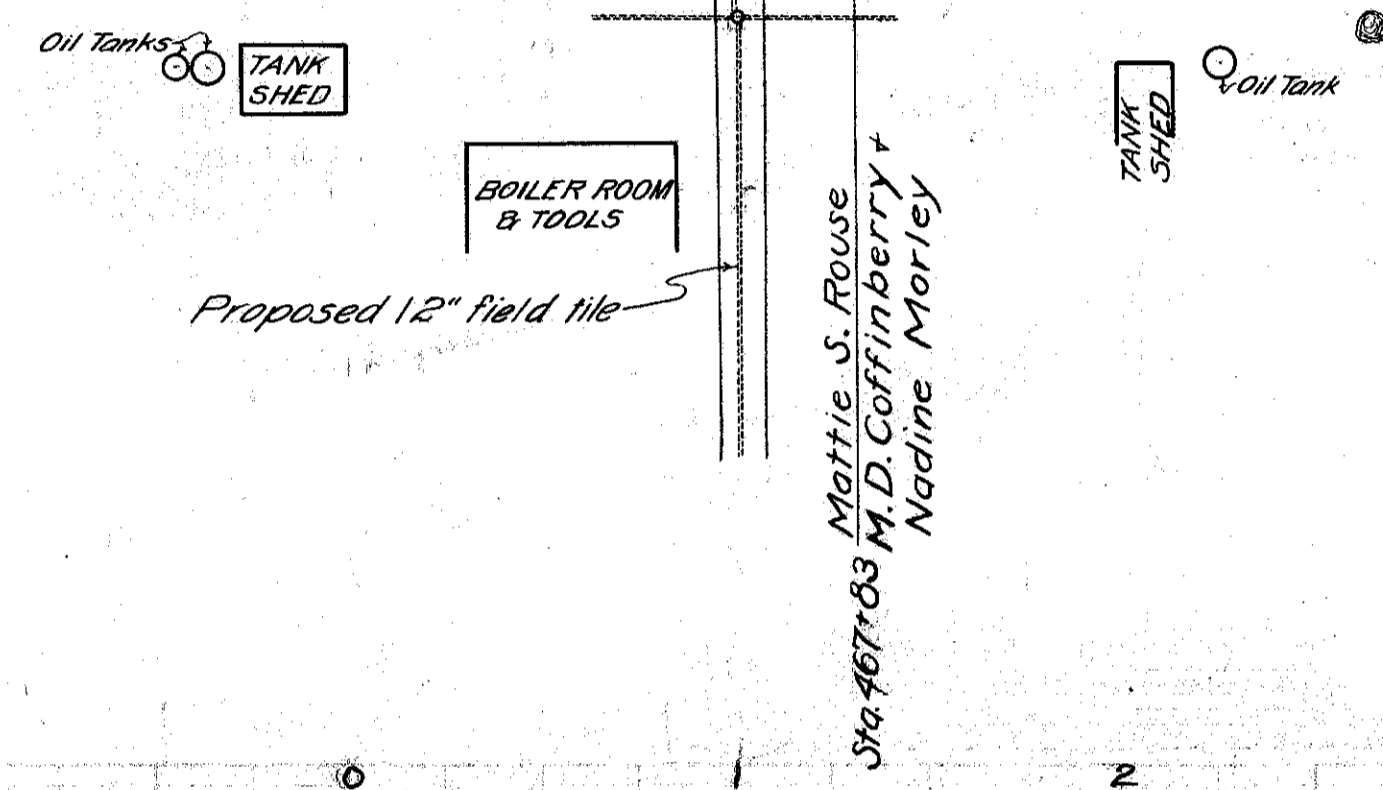
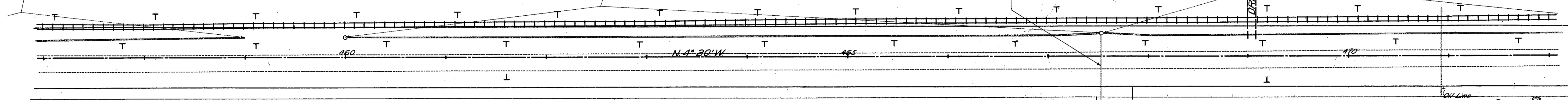


Sta. 455+72 to Sta. 459+00
304 lin. ft. of 6" V.S.P. req'd on left,
and 24 lin. ft. of 8" Corr. I.P. for drive
at Sta. 455+92.

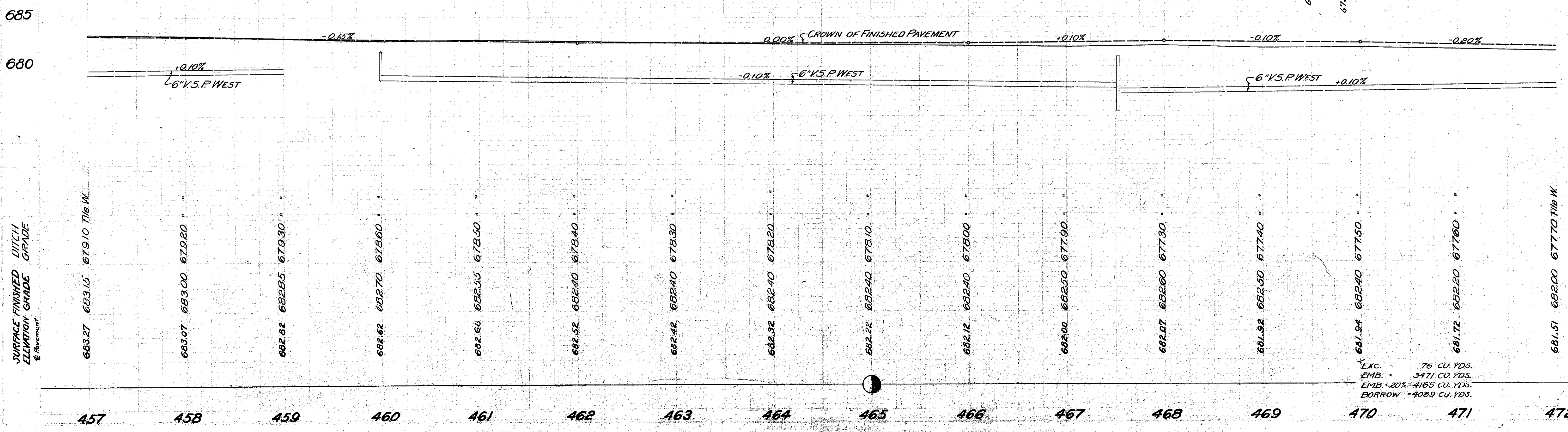
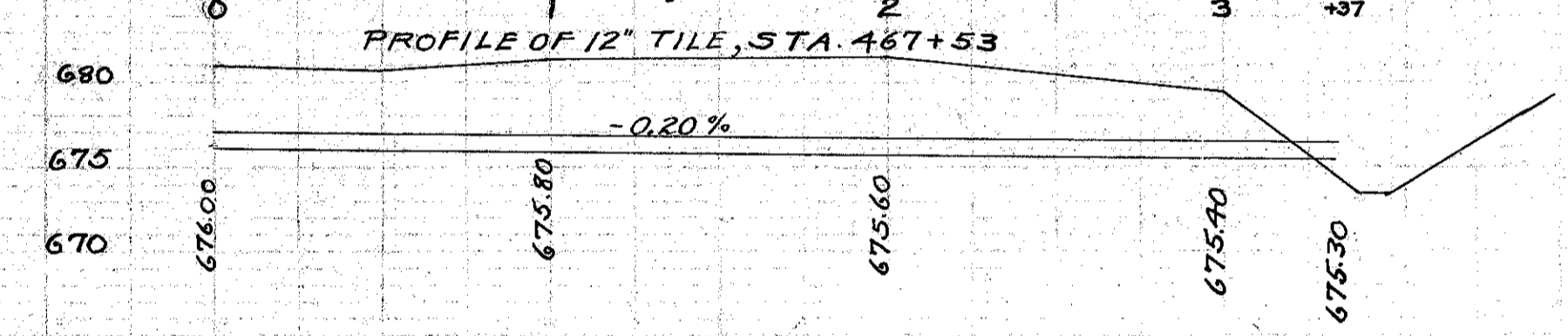
Sta. 460+00 to Sta. 467+53
753 lin. ft. of 6" V.S.P. req'd on left
Build side ditch inlet at Sta. 460+00.

12" x 74'
Sta. 467+53 Build Std. Reinf. Conc. Pipe &
Encased Corr. I.P. Culvert with Std. No. 2
Catch Basin on left using old Catch Basin
on right. Remove 6" outlet tile and replace
with 325 lin. ft. of 12" Field Tile to grade as
given by the Engineer. Drawing No. 305
See detail drawing sheet No. 39.
Lay 12' of 12" Corr. I.P. at outlet end of tile.

Sta. 467+53 to Sta. 480+00
1223 lin. ft. of 6" V.S.P. req'd on left
and 24 lin. ft. of 8" Corr. I.P. req'd for
drive Sta. 469+05. Sid. side ditch
inlet req'd Sta. 473+00 & 480+00.



B.M. Sta. 470+08
Spike in trolley pole
E1 682.97



Exc. = 76 CU. YDS.
EMB. = 3471 CU. YDS.
EMB. + 20% = 4165 CU. YDS.
BORROW = 4089 CU. YDS.

FED. AID DIST. NO.	STATE	FED. AID PROJECT	FISCAL YEAR
10	OHIO	608A	1931

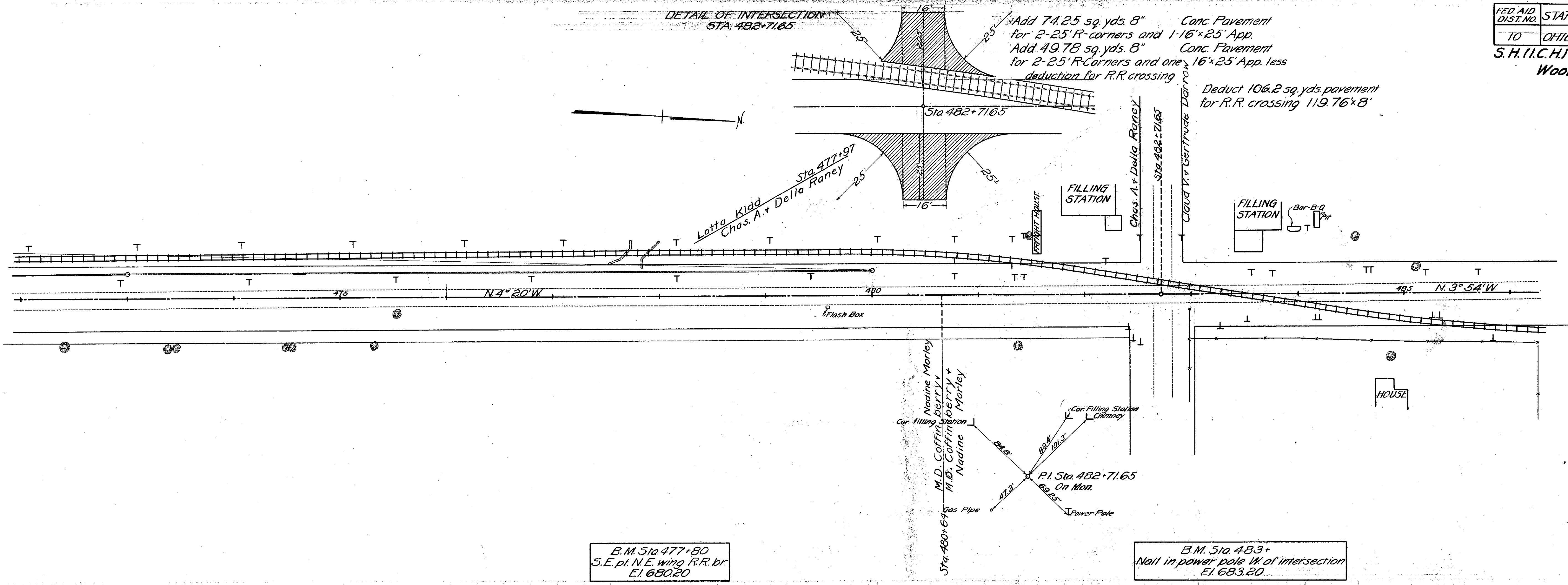
S.H.(I.C.H.) 220 SEC.E-1
WOOD COUNTY

13
44

DETAIL OF INTERSECTION
STA. 482+71.65

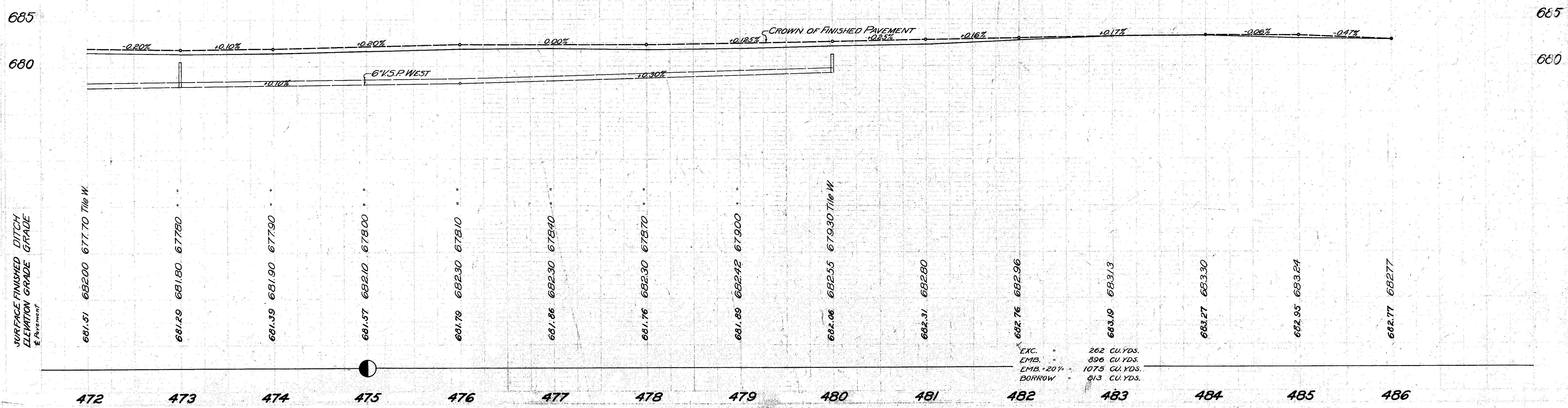
Add 74.25 sq. yds. 8" for 2-25' R-corners and 1-16'x25' App.
Add 49.78 sq. yds. 8" for 2-25' R-corners and one 16'x25' App. less deduction for R.R. crossing

Deduct 106.2 sq. yds. pavement for R.R. crossing 119.76'x8'

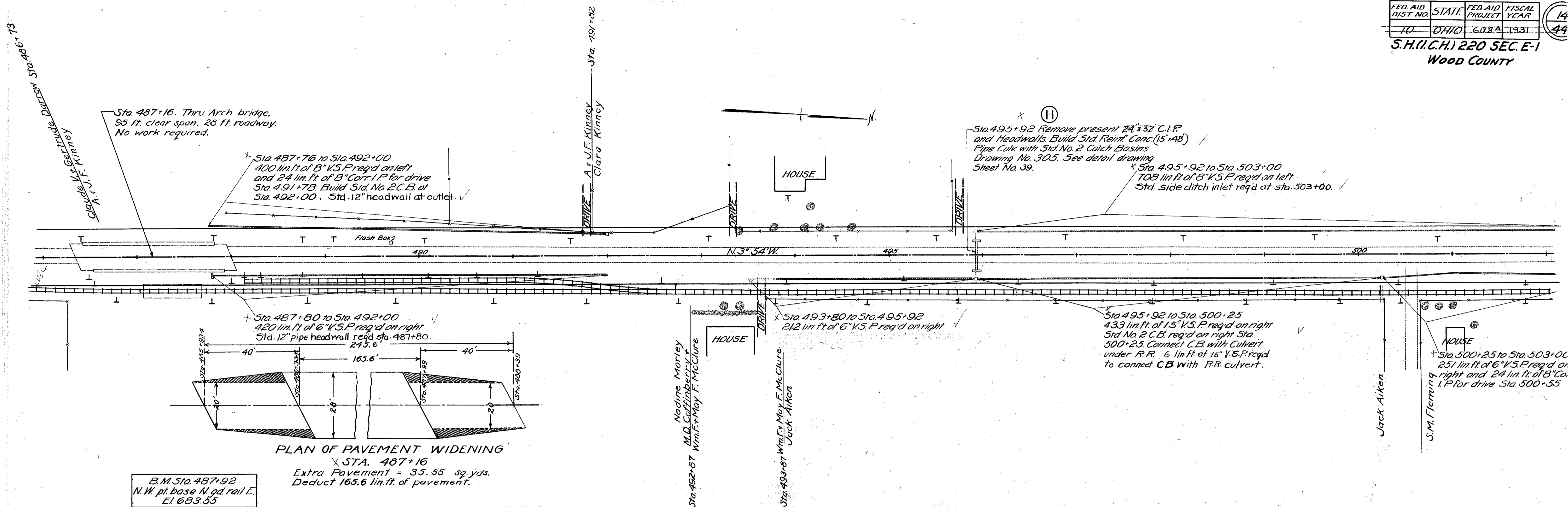


B.M. Sta. 477+80
S.E. pt. N.E. wing R.R. br.
E.I. 680.20

B.M. Sta. 483+
Nail in power pole W of intersection
E.I. 683.20

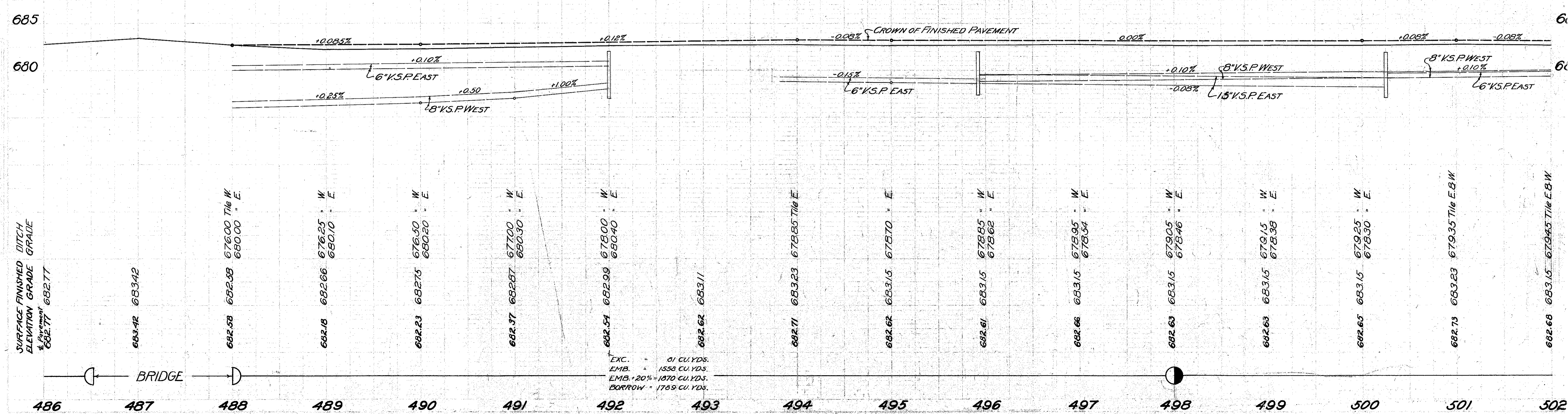


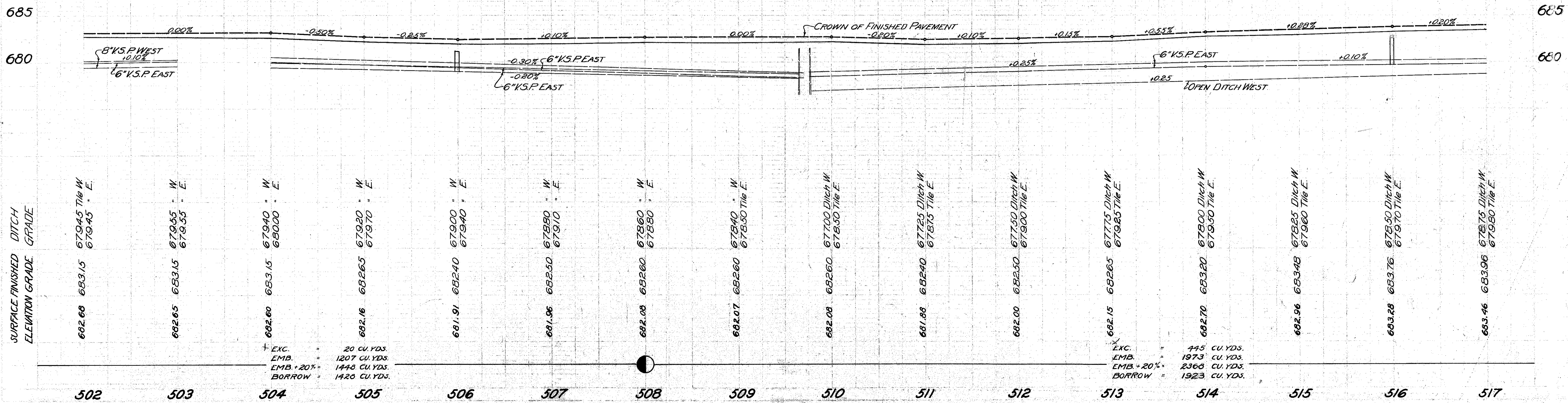
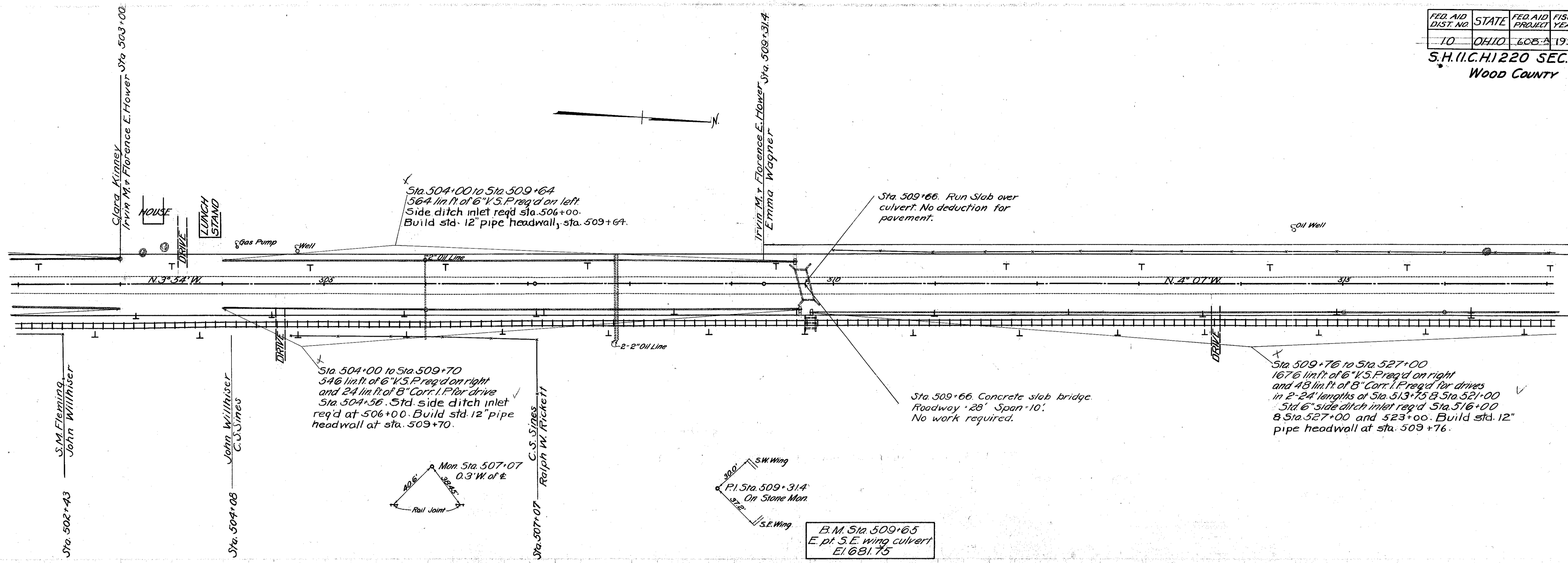
EXC.	262 CU. YDS.
EMB.	896 CU. YDS.
EMB. + 20%	1075 CU. YDS.
BORROW	813 CU. YDS.



PLAN OF PAVEMENT WIDENING
 X STA. 487+16
 Extra Pavement = 35.55 sq. yds.
 Deduct 165.6 lin. ft. of pavement.

B.M. Sta. 487+92
 N.W. pt. base N. gd. rail E.
 El. 683.55



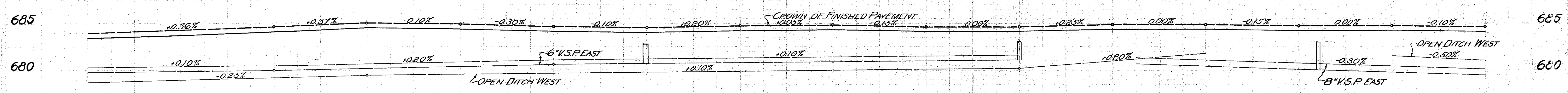
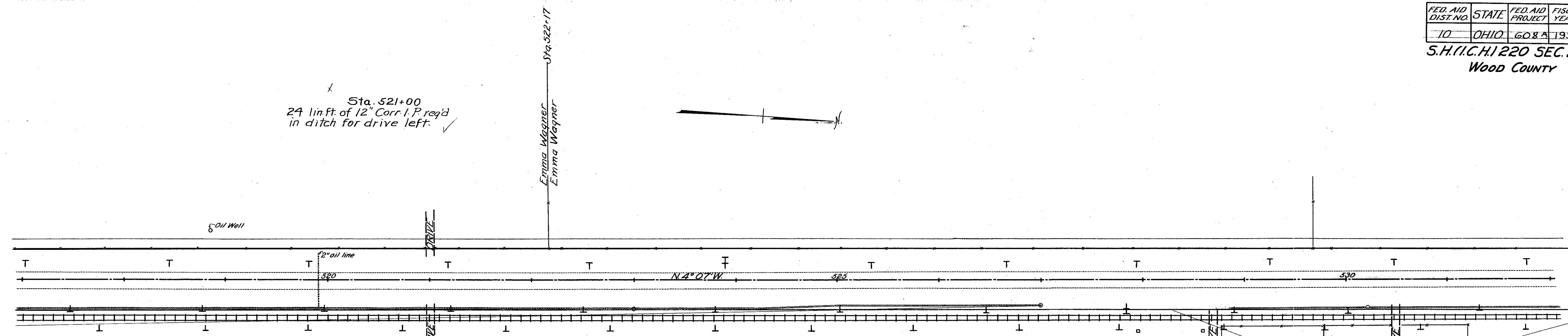


Sta. 521+00
24 lin. ft. of 12" Corr. I.P. req'd
in ditch for drive left.

Emma Wagner
Emma Wagner
Sta. 522+17

Sta. 528+32 to Sta. 533+40
434 lin. ft. of 8" V.S.P. req'd on
right and 24 ft. of 8" Corr. I.P.
in 1-24' length for drives Sta.
530+78. Side ditch inlet req'd
at sta. 530+20.

Ralph W. Rickett
Jacob McGill
Sta. 529+79



STATION	SURFACE FINISHED DITCH ELEVATION GRADE	6\"/>
517	683.46	678.75 Ditch W 679.80 Tile E
518	683.71	679.00 Ditch W 679.90 Tile E
519	684.10	679.25 Ditch W 680.00 Tile E
520	684.55	679.50 Ditch W 680.20 Tile E
521	684.73	679.60 Ditch W 680.40 Tile E
522	684.15	679.70 Ditch W 680.60 Tile E
523	684.05	679.80 Ditch W 680.70 Tile E
524	684.23	679.90 Ditch W 680.80 Tile E
525	684.30	680.00 Ditch W 680.90 Tile E
526	684.16	680.10 Ditch W 681.00 Tile E
527	684.16	680.20 Ditch W 681.10 Tile E
528	684.41	681.00 Ditch W
529	684.41	681.80 Ditch W 680.40 Tile E
530	684.26	684.75 680.10 Tile E
531	684.26	684.75 681.50 Ditch W 679.80 Tile E
532	684.16	684.65 681.00 Ditch W 679.50 Tile E

EXC. 806 CU. YDS.
EMB. 2246 CU. YDS.
EMB. 20% 2695 CU. YDS.
BORROW 1889 CU. YDS.

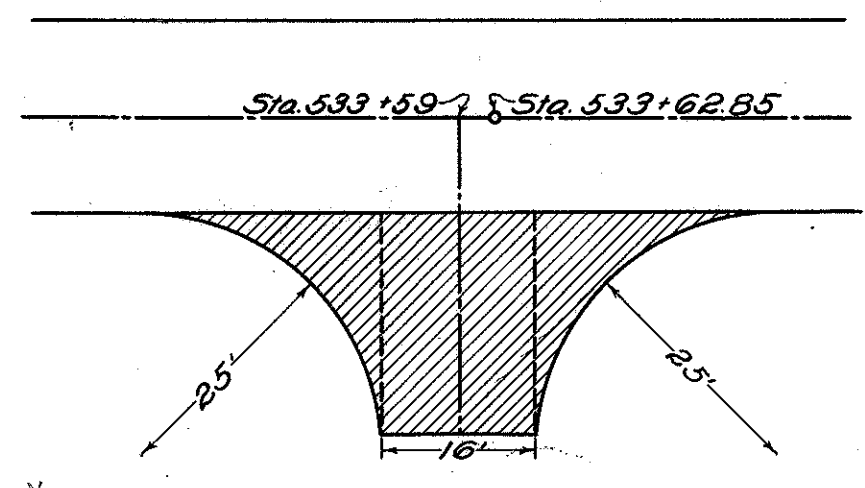
FOR ANY QUESTIONS PLEASE CONTACT ODOT DISTRICT 2 REAL ESTATE AT 419-353-8131

FED. AID DIST. NO.	STATE	FED. AID PROJECT	FISCAL YEAR
10	OHIO	608.0	1931

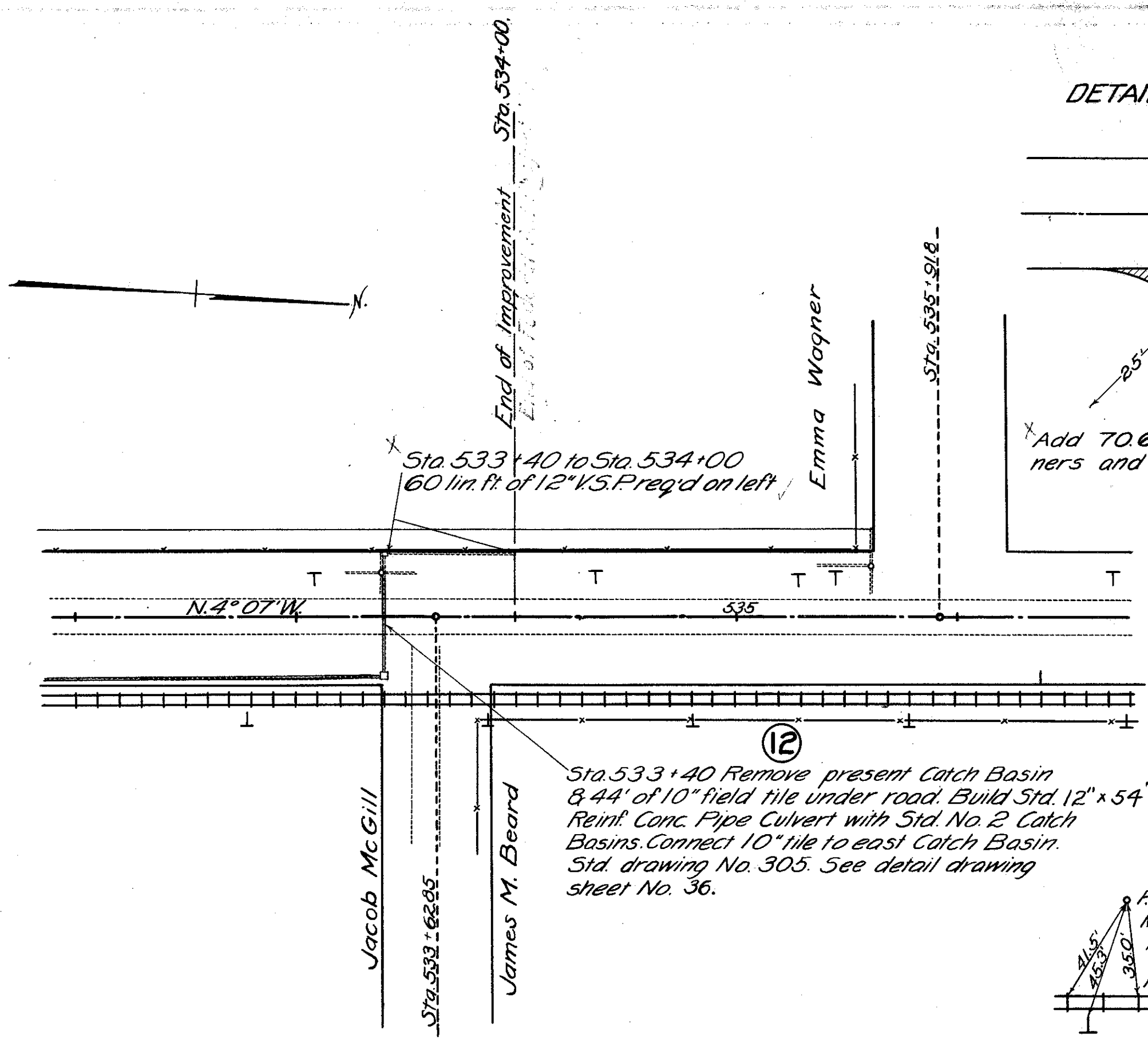
17
44

S.H. (I.C.H.) 220 SEC. E-1
Wood County

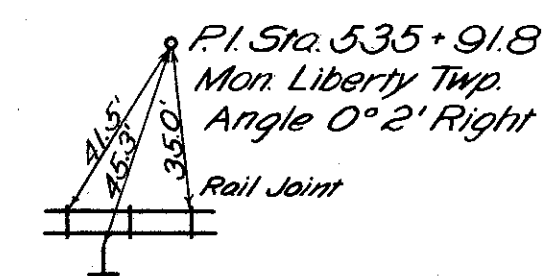
DETAIL OF INTERSECTION
STA. 533+59



Add 70.69 Sq. Yds. for 2-25' R-corners and one 16' x 23' Approach



Sta. 533+40 Remove present Catch Basin 8' x 4' of 10" field tile under road. Build Std. 12' x 54" Reinf. Conc. Pipe Culvert with Std. No. 2 Catch Basins, connect 10" tile to east Catch Basin. Std. drawing No. 305. See detail drawing sheet No. 36.



B.M. Sta. 533+90
Spike in pole atop 48 Langmade Rd.
El. 684.26

