

8024

FOR ANY QUESTIONS PLEASE CONTACT ODOT DISTRICT 2 REAL ESTATE AT 419-353-8131

| | | | | |
|--------------------|-------|------------------|-------------|------|
| FED. AID DIST. NO. | STATE | FED. AID PROJECT | FISCAL YEAR | 1/33 |
| 10 | OHIO | 608-A | 1931 | |

S.H.(I.C.H.) NO. 220 SECS. E-1, PORTAGE, E-3, & BOWLING GREEN
E-3 & BOWLING GREEN
WOOD COUNTY

June 12-30

STATE OF OHIO
DEPARTMENT OF HIGHWAYS

FINDLAY - BOWLING GREEN ROAD

6866
S.H.(I.C.H.) NO. 220 SECS. E-1, PORTAGE, E-3, & BOWLING GREEN PET. NO. 6867
WOOD COUNTY
LIBERTY, PORTAGE, CENTER & PLAIN TOWNSHIPS

The Standard Specifications of the State of Ohio, Department of Highways in force on date of contract will govern this improvement.

I hereby approve these plans and declare that the making of this improvement will require the closing to traffic of the highway and that defours will be provided as shown on the plan and estimates.

Approved *Onton H. Jones*
Date 5-10-30 Resident District
Deputy Director

Approved *John F. Galbreath*
Date 5-12-30 Resident Division
Deputy Director

Approved *H.P. Chapman*
Date _____ Chief Engineer
Bureau of Construction

Approved _____
Date _____ Chief Engineer
Bureau of Maintenance

Approved _____
Date _____ Chief Engineer
Bureau of Bridges

Approved *Andrew R. Schick*
Date _____ Chief Engineer *&* First Asst
Director.

Approved *Robert M. Wood*
Date _____ Director of Highways

Recommended for Approval _____
Date _____ District Engineer
Bureau of Public Roads

Recommended for Approval _____
Date _____ Chief Engineer
Bureau of Public Roads

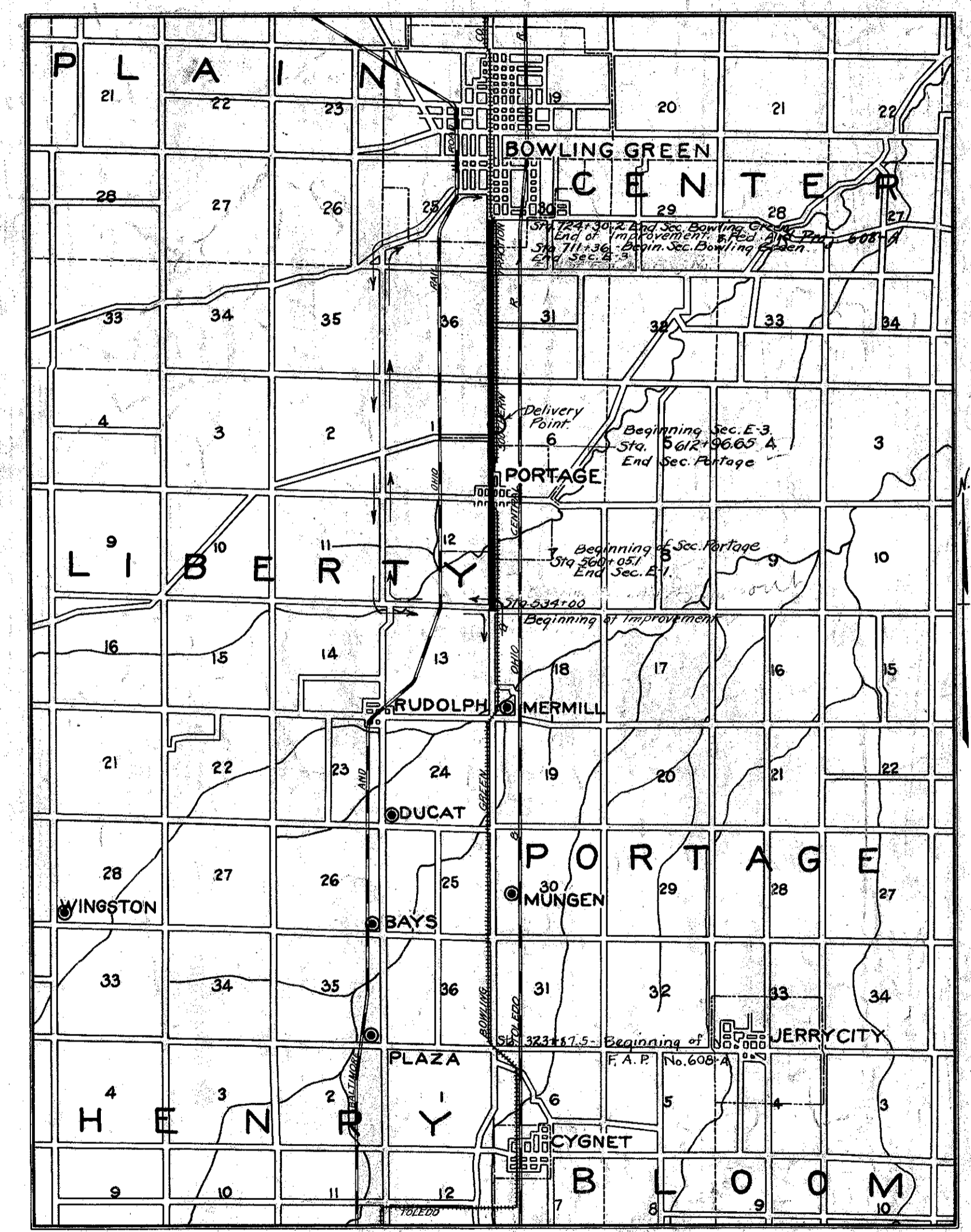
Approved _____
Date _____ Chief of Bureau

CONVENTIONAL SIGNS

| | |
|--------------------------|-------|
| State Line | _____ |
| County Line | _____ |
| Township Line | _____ |
| Section Line | _____ |
| Property Line not fenced | _____ |
| Center Line | _____ |
| City or Village Line | _____ |
| Fence | _____ |
| Telephone or Telegraph | TTT |
| Steam Railroad | _____ |
| Electric Line | _____ |
| Guard Rail | _____ |
| Drain Pipe | _____ |

NET LENGTHS

| | |
|--------------|----------|
| PRO. NO. 3 - | 2605.1' |
| PRO. NO. 4 - | 5181.89' |
| PRO. NO. 5 - | 9812.33' |
| PRO. NO. 6 - | 1294.2' |



LOCATION PLAN
SCALE OF MILES

CONSTRUCTION BUREAU
JUL 28 1935
GROUND PHOTOLAB

PORTION TO BE IMPROVED
DETOURS SHOWN THUS
IMPROVED ROAD
HAUL ROAD

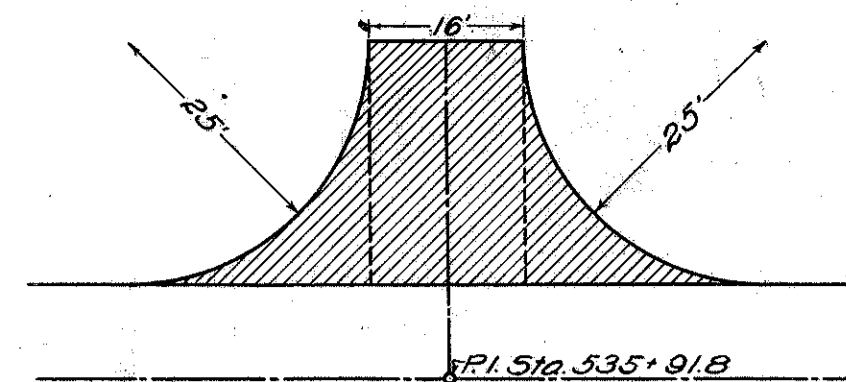
| | | | |
|--------------------|----------|-----------------------|---------|
| PLAN | 1" = 50' | TITLE PAGE | P. 1 |
| PROFILE VERTICAL | 1" = 5' | TYPICAL CROSS SECTION | 2 |
| PROFILE HORIZONTAL | 1" = 50' | PLANS AND PROFILE | 3 - 15 |
| CROSS SECTION | 1" = 5' | CROSS SECTIONS | 16 - 27 |
| | | STRUCTURAL PLANS | 28 - 31 |
| | | SUMMARY SHEET | 32 - 33 |

We, the Commissioners of Wood County, hereby approve these plans and certify that the right-of-way 60 feet wide is available for the construction, maintenance and repair of the above highway.

E. C. Fox
J. M. Beard
W. D. Rugh

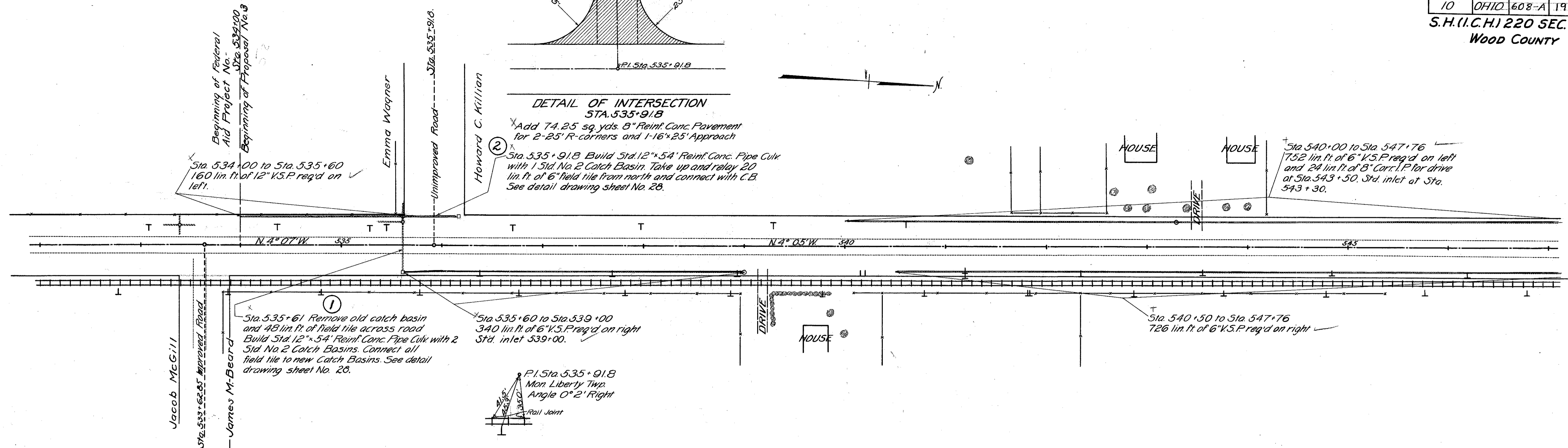
Date May 12, 1930 County Commissioners

SUPPLEMENTAL PRINTS OF STRUCTURAL STANDARDS
DRAWINGS NO. 95, 96, 98, 300, 305.



**DETAIL OF INTERSECTION
STA. 535+91.8**

Add 74.25 sq. yds. 8" Reinf. Conc. Pavement for 2-25' R-corners and 1-16'x25' Approach
Sta. 535+91.8 Build Std. 12"x54" Reinf. Conc. Pipe Culk with 1 Std. No. 2 Catch Basin. Take up and relay 20 lin. ft. of 6" field tile from north and connect with C.B. See detail drawing sheet No. 28.



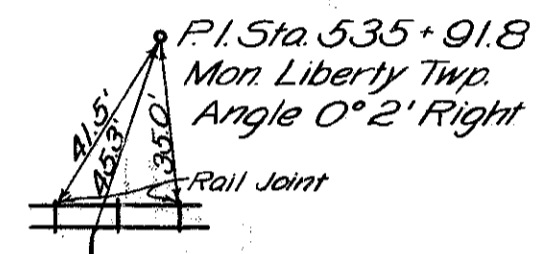
Sta. 534+00 to Sta. 535+60
160 lin. ft. of 12" V.S.P. req'd on left.

Sta. 540+00 to Sta. 547+76
1752 lin. ft. of 6" V.S.P. req'd on left and 24 lin. ft. of 8" Conc. I.P. for drive at Sta. 543+50. Std. inlet at Sta. 543+30.

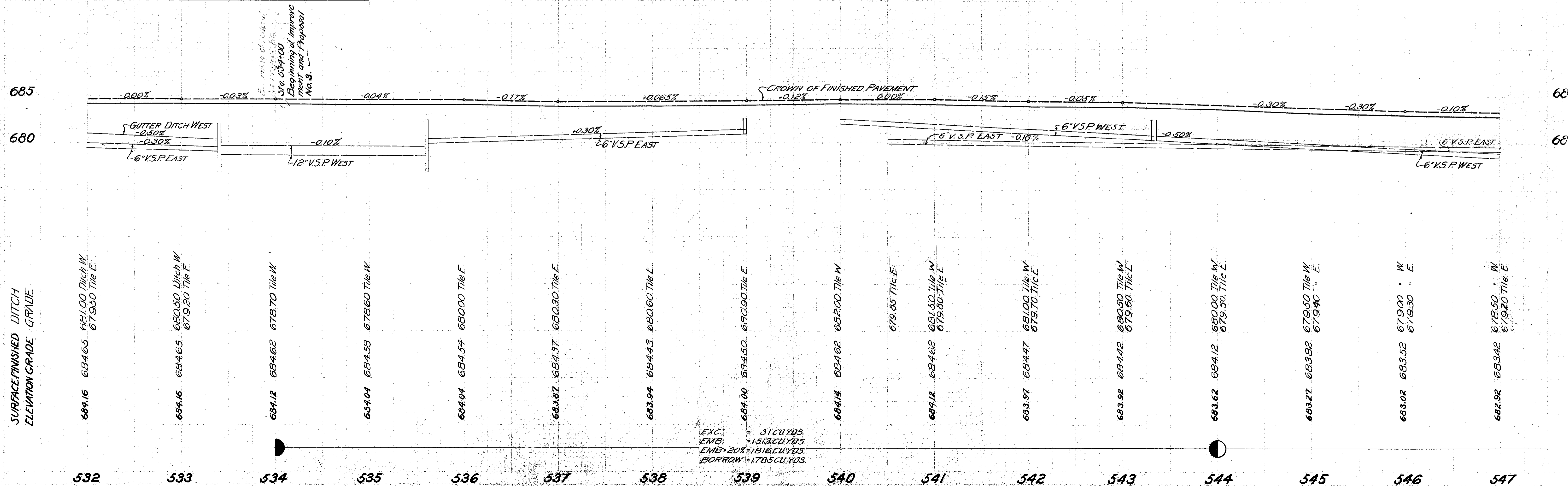
Sta. 535+61 Remove old catch basin and 48 lin. ft. of field tile across road. Build Std. 12"x54" Reinf. Conc. Pipe Culk with 2 Std. No. 2 Catch Basins. Connect all field tile to new Catch Basins. See detail drawing sheet No. 28.

Sta. 535+60 to Sta. 539+00
340 lin. ft. of 6" V.S.P. req'd on right. Std. inlet 539+00.

Sta. 540+50 to Sta. 547+76
726 lin. ft. of 6" V.S.P. req'd on right



B.M. Sta. 533+90
Spike in pole Stop 48 Langmade Rd.
El. 684.26



EXC. = 31 CUYDS.
EMB. = 1513 CUYDS.
EMB.+20% = 1816 CUYDS.
BORROW = 1785 CUYDS.

| | | | |
|--------------------|-------|------------------|-------------|
| FED. AID DIST. NO. | STATE | FED. AID PROJECT | FISCAL YEAR |
| 10 | OHIO | 608-A | 1931 |

S.H.(I.C.H.) 220 SEC. E-1
WOOD COUNTY

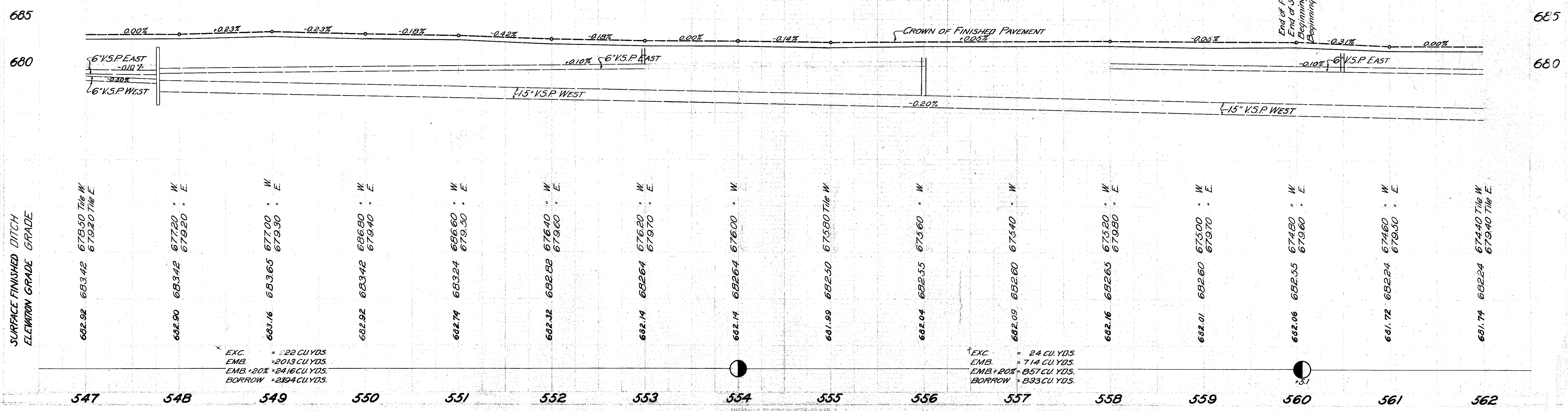
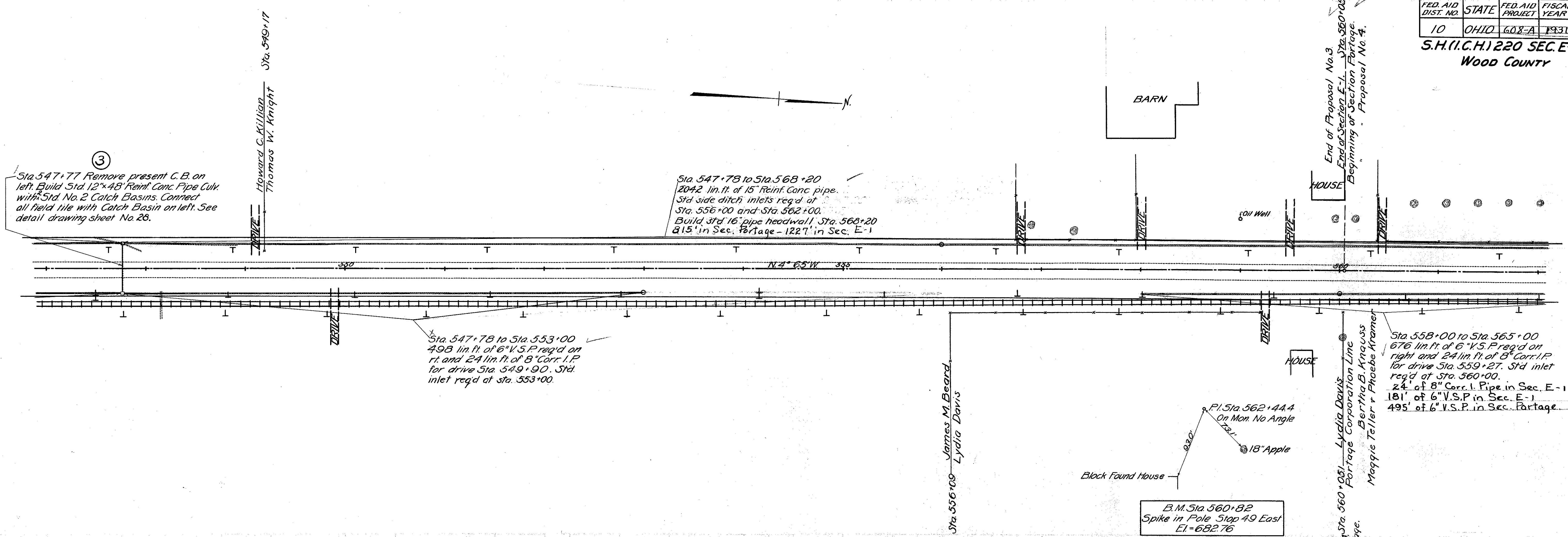
4
33

③
Sta. 547+77 Remove present C.B. on left. Build Std. 12"x48" Reinf. Conc. Pipe Culvert with Std. No. 2 Catch Basins. Connect all field tile with Catch Basin on left. See detail drawing sheet No. 28.

Sta. 547+78 to Sta. 568+20
2042 lin. ft. of 15" Reinf. Conc. pipe.
Std. side ditch inlets req'd at Sta. 556+00 and Sta. 562+00.
Build Std. 16" pipe headwall Sta. 568+20
815' in Sec. Portage - 1227' in Sec. E-1

Sta. 547+78 to Sta. 553+00
498 lin. ft. of 6" V.S.P. req'd on rt. and 24 lin. ft. of 8" Corr. I.P. for drive Sta. 549+90. Std. inlet req'd at Sta. 553+00.

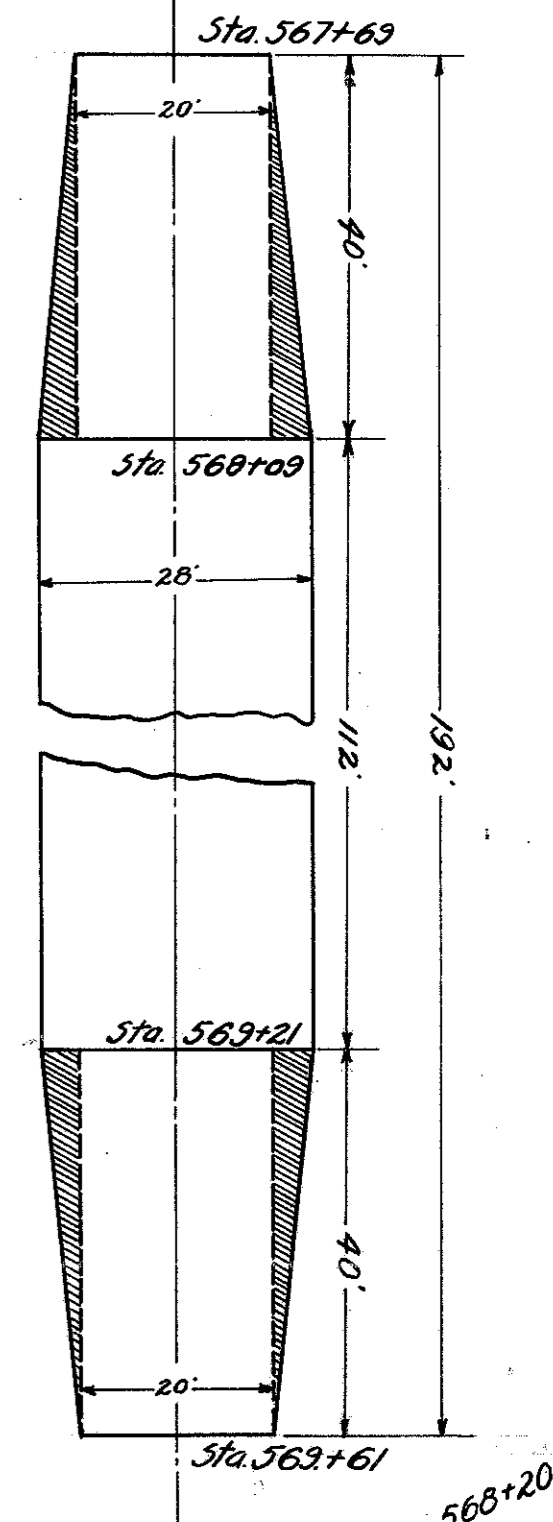
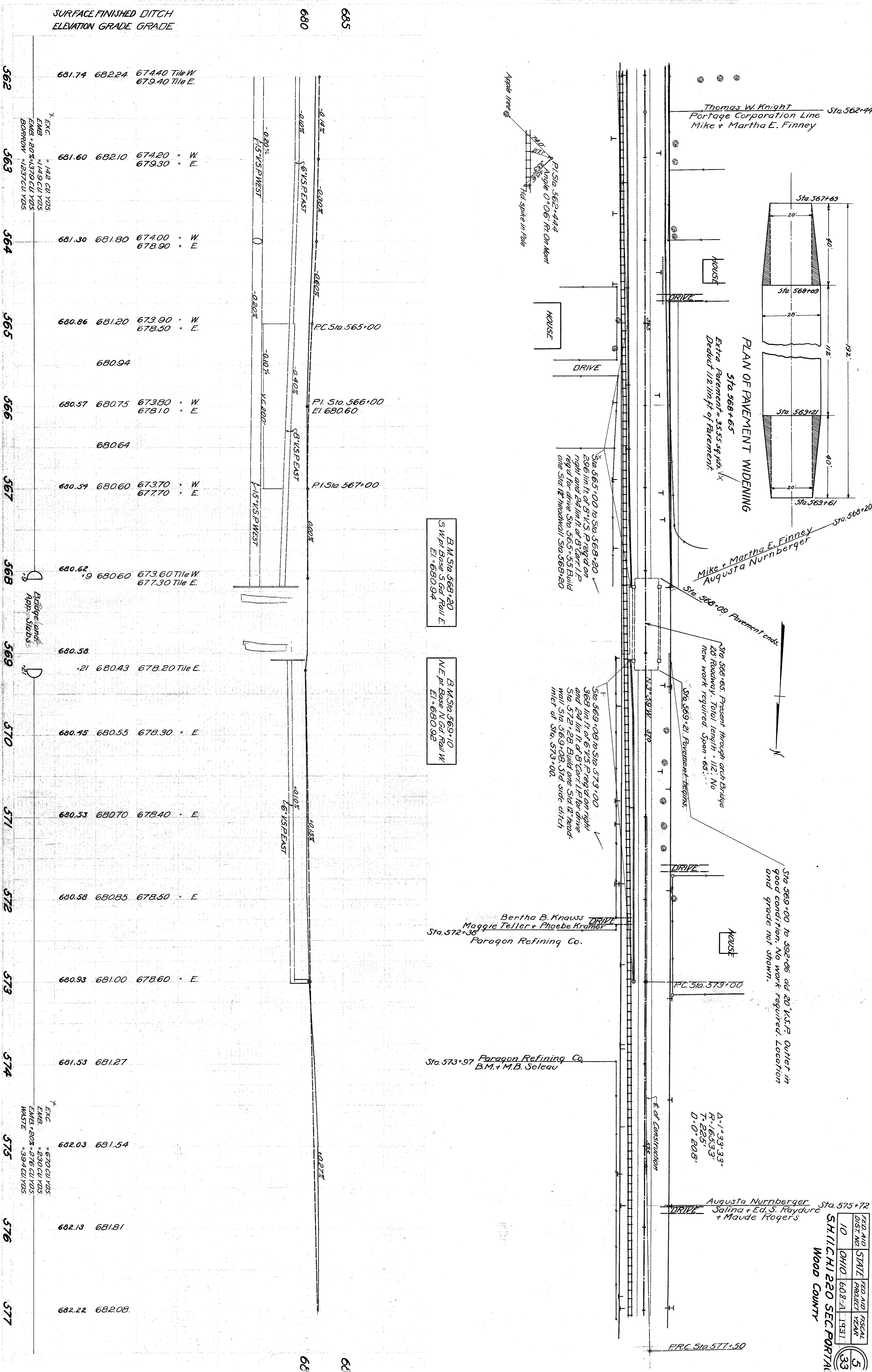
Sta. 558+00 to Sta. 565+00
676 lin. ft. of 6" V.S.P. req'd on right and 24 lin. ft. of 8" Corr. I.P. for drive Sta. 559+27. Std. inlet req'd at Sta. 560+00.
24' of 8" Corr. I. Pipe in Sec. E-1
181' of 6" V.S.P. in Sec. E-1
495' of 6" V.S.P. in Sec. Portage.



EXC. = 22 CU.YDS.
EMB. = 2013 CU.YDS.
EMB.+20% = 2416 CU.YDS.
BORROW = 2394 CU.YDS.

EXC. = 24 CU.YDS.
EMB. = 714 CU.YDS.
EMB.+20% = 857 CU.YDS.
BORROW = 833 CU.YDS.

SURFACE FINISHED DITCH
ELEVATION GRADE GRADE



B.M. Sta. 568+20
S.W. pt. Base N. Cd. Rail W
E.I. = 680.94

B.M. Sta. 569+10
N.E. pt. Base N. Cd. Rail W
E.I. = 680.92

Sta. 568+05. Present through arch bridge
28 Roadway. Total length = 112'. No
new work required. Span = 65'.

Sta. 569+00 to 569+06 old 20" V.S.P. outlet in
good condition. No work required. Location
and grade not shown.

A-1-33-33"
R-16593
7-25"
D-0-208'

| FED. AID DIST NO. | STATE | FED. AID PROJECT YEAR | FISCAL YEAR |
|-------------------|-------|-----------------------|-------------|
| 10 | OHIO | 608-A-1931 | 1931 |

5
33

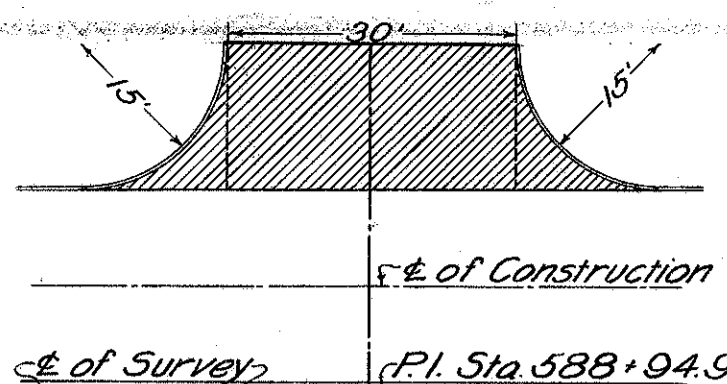
SHILCH 120 SEC. PORTAGE
WOOD COUNTY

P.R.C. Sta. 577+50

DETAIL OF INTERSECTION
STA. 588+94.96

*Add 60.70 sq. yds. of 8" Reint. Conc. Pave for 2-15' R-corners and 1-30' x 15' Approach.

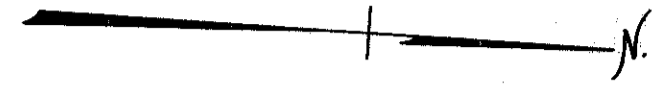
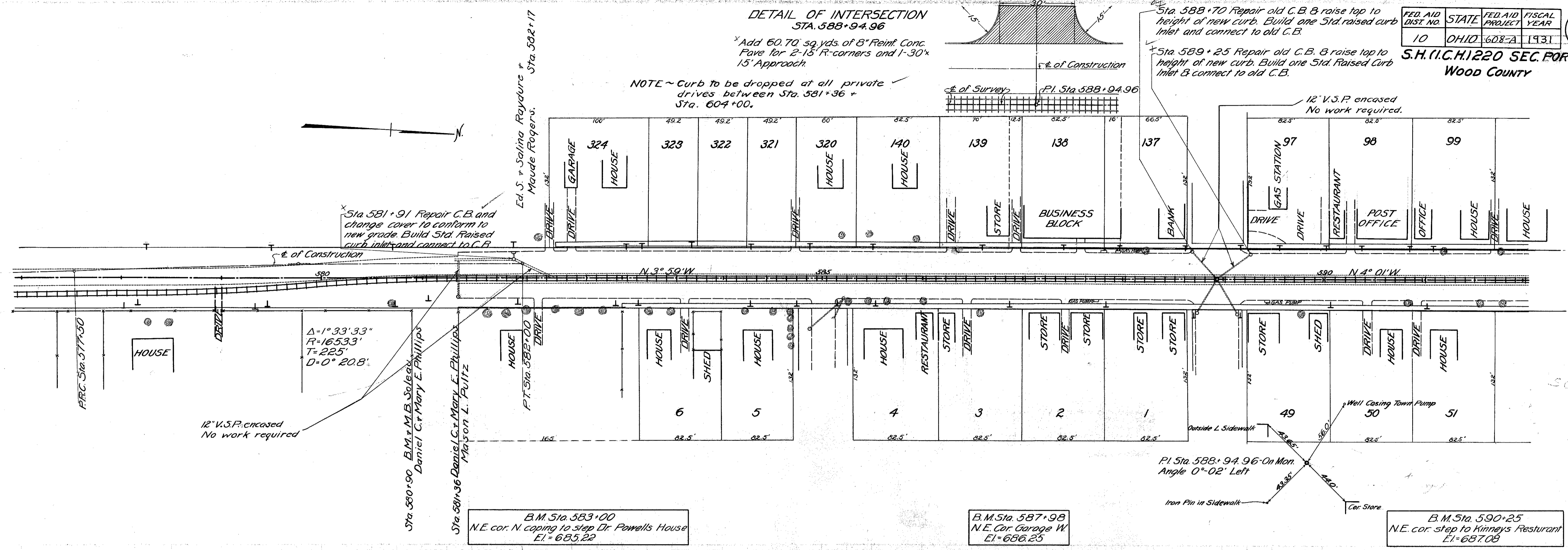
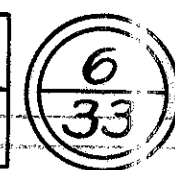
NOTE ~ Curb to be dropped at all private drives between Sta. 581+36 + Sta. 604+00.



Sta. 588+70 Repair old C.B. & raise top to height of new curb. Build one Std. raised curb Inlet and connect to old C.B.
Sta. 589+25 Repair old C.B. & raise top to height of new curb. Build one Std. Raised Curb Inlet & connect to old C.B.

| FED. AID DIST. NO. | STATE | FED. AID PROJECT | FISCAL YEAR |
|--------------------|-------|------------------|-------------|
| 10 | OHIO | 608-A | 1931 |

S.H. (I.C.H.) 220 SEC. PORTAGE
WOOD COUNTY



Sta. 581+91 Repair C.B. and change cover to conform to new grade. Build Std. Raised curb inlet and connect to C.B.

Ed. S. + Salina Raymond + Sta. 582+17
Maude Fogel + Sta. 582+17

$\Delta = 1^\circ 33' 33''$
 $R = 165.33'$
 $T = 225'$
 $D = 0^\circ 20.8'$

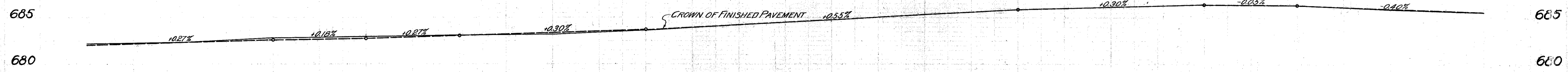
Sta. 580+50 B.M. M.L.B. Seale
Daniel C. + Mary E. Phillips

Sta. 581+36 Daniel C. + Mary E. Phillips
Mayson L. Pultz

B.M. Sta. 583+00
N.E. cor. N. coping to step Dr. Powells House
E.I. = 685.22

B.M. Sta. 587+98
N.E. Cor. Garage W
E.I. = 686.25

B.M. Sta. 590+25
N.E. cor. step to Kinneys Resturant
E.I. = 687.08



Long Sta. 101.14

| Station | Surface Finished Elevation Grade |
|---------|----------------------------------|
| 577 | 682.22 |
| 578 | 682.37 |
| 579 | 682.65 |
| 580 | 683.02 |
| 581 | 683.15 |
| 582 | 683.22 |
| 583 | 683.63 |
| 584 | 684.24 |
| 585 | 684.76 |
| 586 | 685.34 |
| 587 | 685.86 |
| 588 | 686.16 |
| 589 | 686.47 |
| 590 | 686.42 |
| 591 | 685.93 |
| 592 | 685.57 |

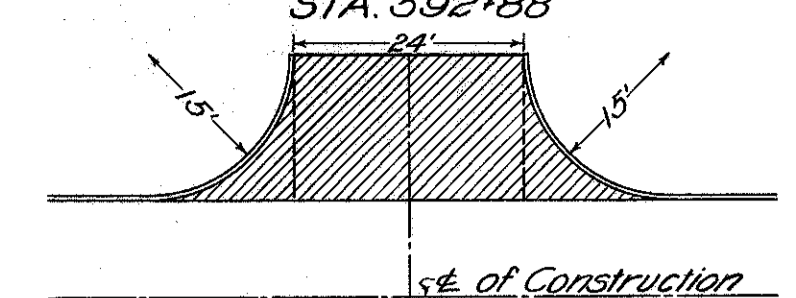
Exc. = 552 CU. YDS.
EMB. = 24 CU. YDS.
EMB + 20% = 29 CU. YDS.
WASTE = 523 CU. YDS.

| FED. AID DIST. NO. | STATE | FED. AID PROJECT | FISCAL YEAR |
|--------------------|-------|------------------|-------------|
| 10 | OHIO | 608-A | 1931 |

7
33

S.H.(I.C.H) 220 SEC.-PORTAGE
WOOD COUNTY

DETAIL OF INTERSECTION
STA. 592+88



Sta. 592+88
Add 50.70 sq. yds. of 8" Reinf. Conc. Pave. for 2-15' R-corners and 1-24' x 15' Approach.

Sta. 592+72 Repair C.B. & change cover to conform to new grade. Build Std. Raised Curb Inlet & connect to C.B.

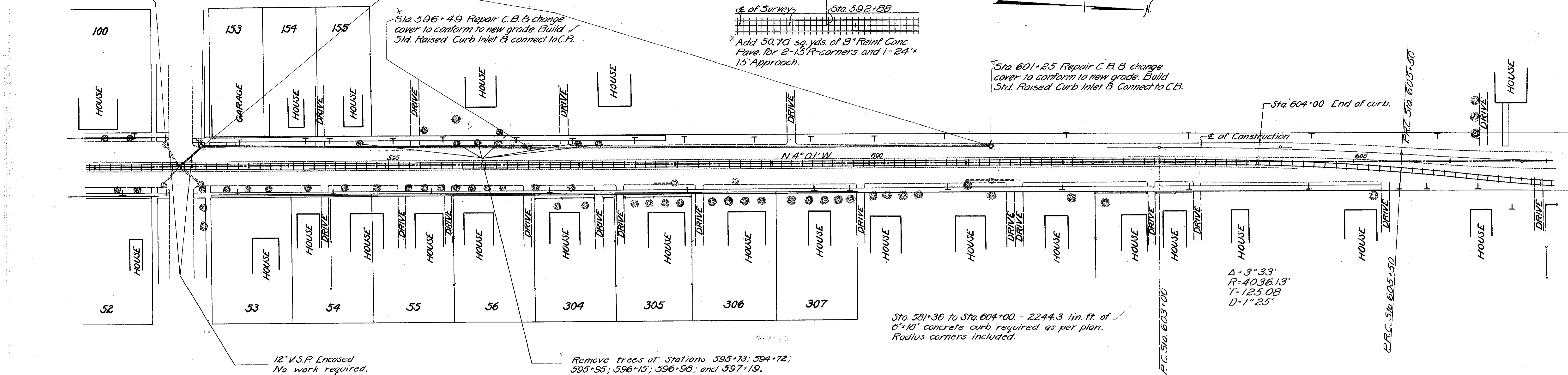
Sta. 593+09 Repair C.B. & change cover to conform to new grade. Build Std. Raised Curb Inlet & connect to C.B.

Sta. 592+86 to Sta. 601+25 Remove present 8" tile. Lay 846 Lin. Ft. of 12" R.C.P. along line of old tile and connect to old C.Bs. Cement joints.

Sta. 596+49 Repair C.B. & change cover to conform to new grade. Build Std. Raised Curb Inlet & connect to C.B.

Sta. 601+25 Repair C.B. & change cover to conform to new grade. Build Std. Raised Curb Inlet & Connect to C.B.

Sta. 604+00 End of curb.



Sta. 581+36 to Sta. 604+00 - 2244.3 lin. ft. of 6"x18" concrete curb required as per plan. Radius corners included.

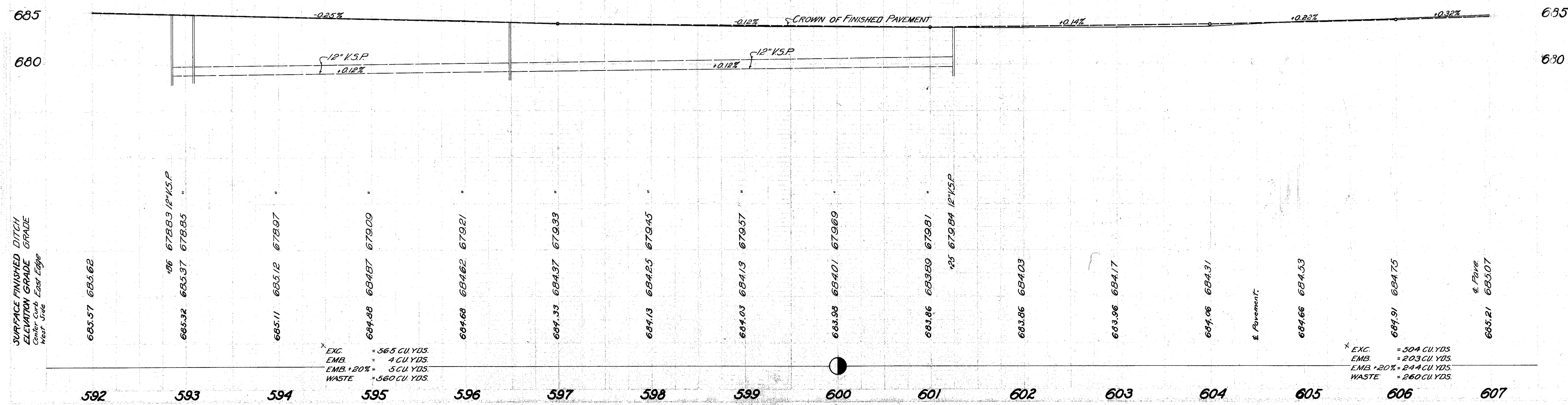
$\Delta = 3^\circ 33'$
 $R = 4036.13'$
 $T = 125.08'$
 $D = 1^\circ 25'$

B.M. Sta. 593+49
S.E. cor. old conc. pump base
E.I. = 685.73

B.M. Sta. 606+55
N.E. cor. conc. steps to house West
E.I. = 685.87

12" V.S.P. Encased
No. work required.

Remove trees of Stations 595+73, 594+72, 595+95, 596+15, 596+98, and 597+19.



EXC. = 565 CU. YDS.
EMB. = 4 CU. YDS.
EMB. + 20% = 5 CU. YDS.
WASTE = 560 CU. YDS.

EXC. = 504 CU. YDS.
EMB. = 203 CU. YDS.
EMB. + 20% = 244 CU. YDS.
WASTE = 260 CU. YDS.

SURFACE FINISHED DITCH
ELEVATION GRADE
Center Curb East Edge
West Side

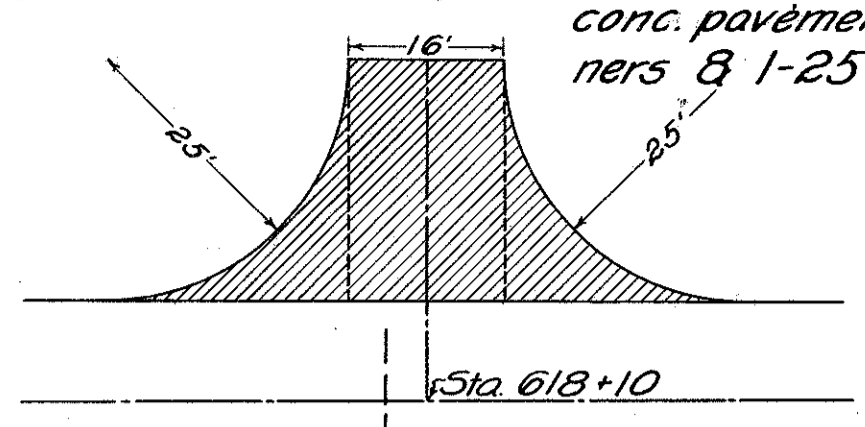
| FED. AID DIST. NO. | STATE | FED. AID PROJECT | FISCAL YEAR |
|--------------------|-------|------------------|-------------|
| 10 | OHIO | 608-A | 1931 |

S.H. (I.C.H.) 220 SEC. E-3
WOOD COUNTY

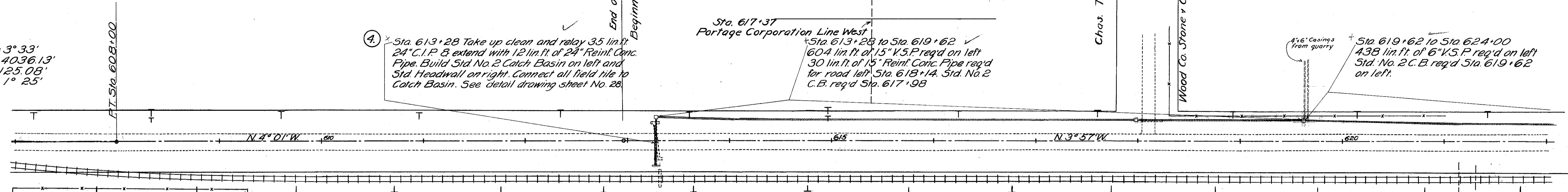
6
31

$\Delta = 3^{\circ} 33'$
 $R = 4036.13'$
 $T = 125.08'$
 $D = 1^{\circ} 25'$

DETAIL OF INTERSECTION
STA. 618+10



Add 74.25 sq. yds. of 8" Reinf. conc. pavement for 2-25' R-corners & 1-25'x16' Approach.

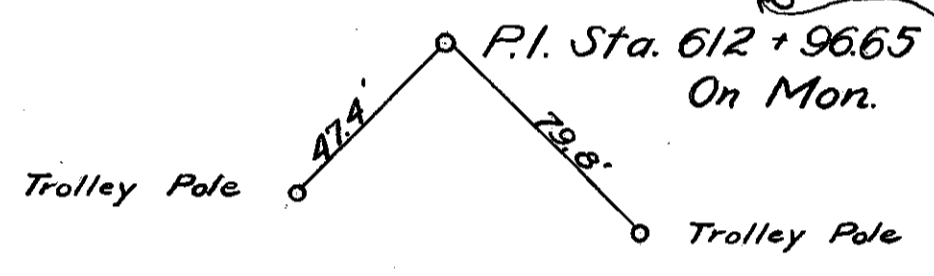


4. Sta. 613+28 Take up clean and relay 35 lin. ft. 24" C.I.P. & extend with 12 lin. ft. of 24" Reinf. Conc. Pipe. Build Std. No. 2 Catch Basin on left and Std. Headwall on right. Connect all field tile to Catch Basin. See detail drawing sheet No. 28.

Sta. 613+28 to Sta. 619+62
604 lin. ft. of 15" V.S.P. req'd on left
30 lin. ft. of 15" Reinf. Conc. Pipe req'd for road left Sta. 618+14. Std. No. 2 C.B. req'd Sta. 617+98

Sta. 619+62 to Sta. 624+00
438 lin. ft. of 6" V.S.P. req'd on left
Std. No. 2 C.B. req'd Sta. 619+62 on left.

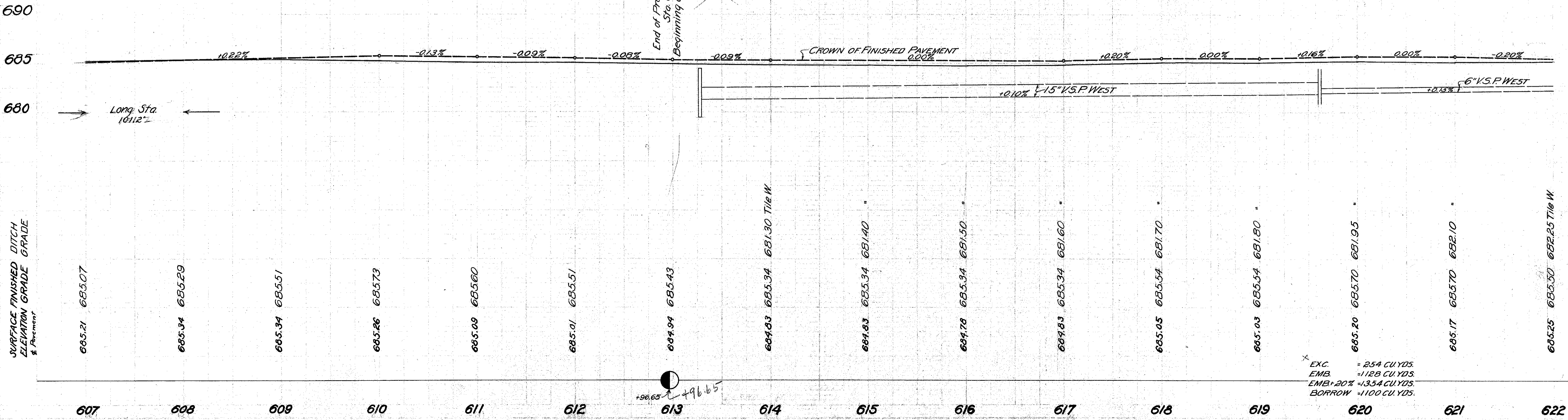
Portage Corporation Line East
Sta. 612+96.65



Lewis H. Kramer
Gottlieb Schweheimer

End of Proposal No. 4
Sta. 612+96.65
Beginning of Proposal No. 5

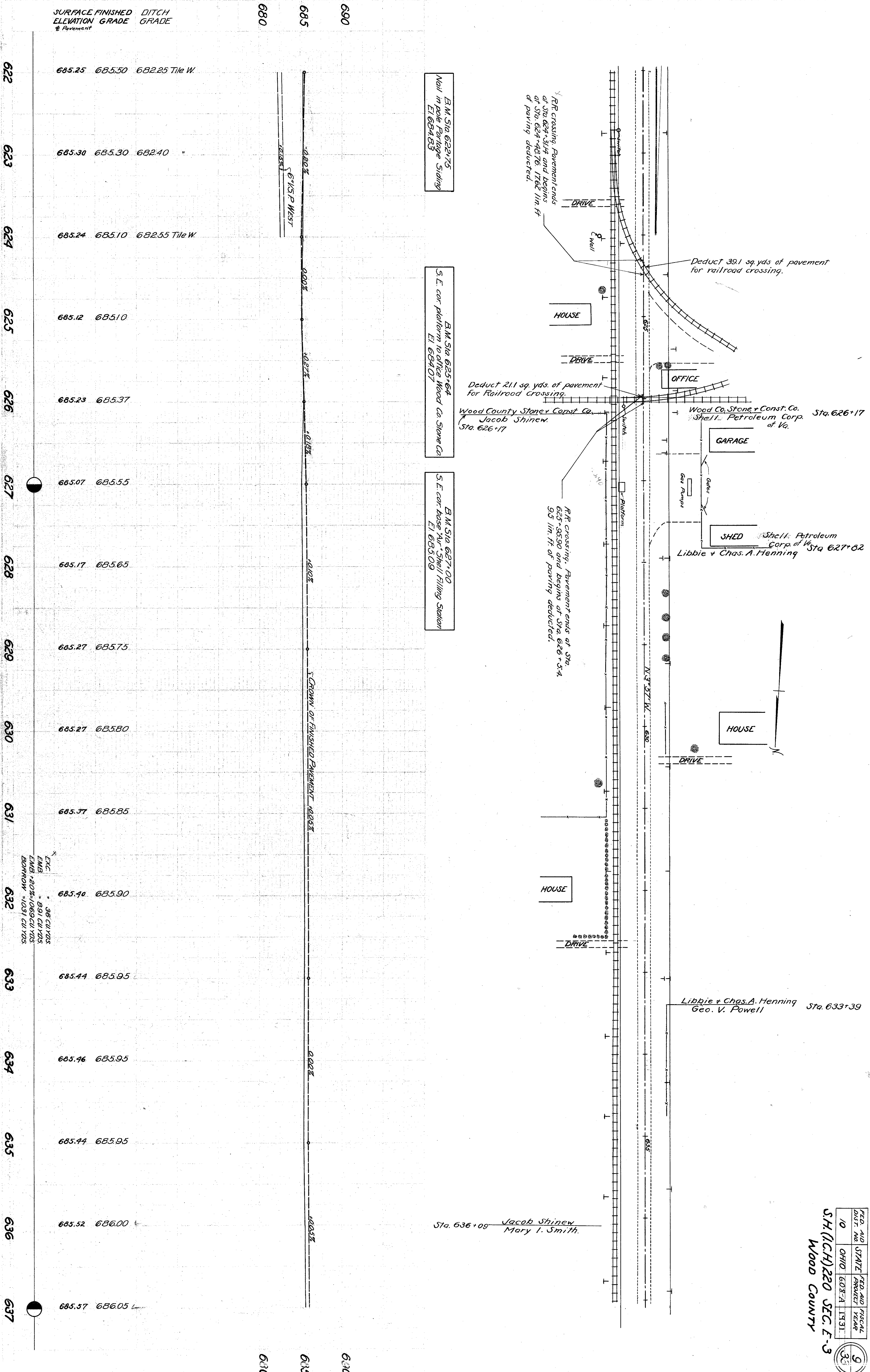
Sta. 621+14
Gottlieb Schweheimer
Wood County Stone & Constr. Co.



SURFACE FINISHED DITCH
ELEVATION GRADE GRADE
& Pavement

EXC. = 254 CU. YDS.
EMB. = 1128 CU. YDS.
EMB+20% = 1354 CU. YDS.
BORROW = 1100 CU. YDS.

607 608 609 610 611 612 613 614 615 616 617 618 619 620 621 622

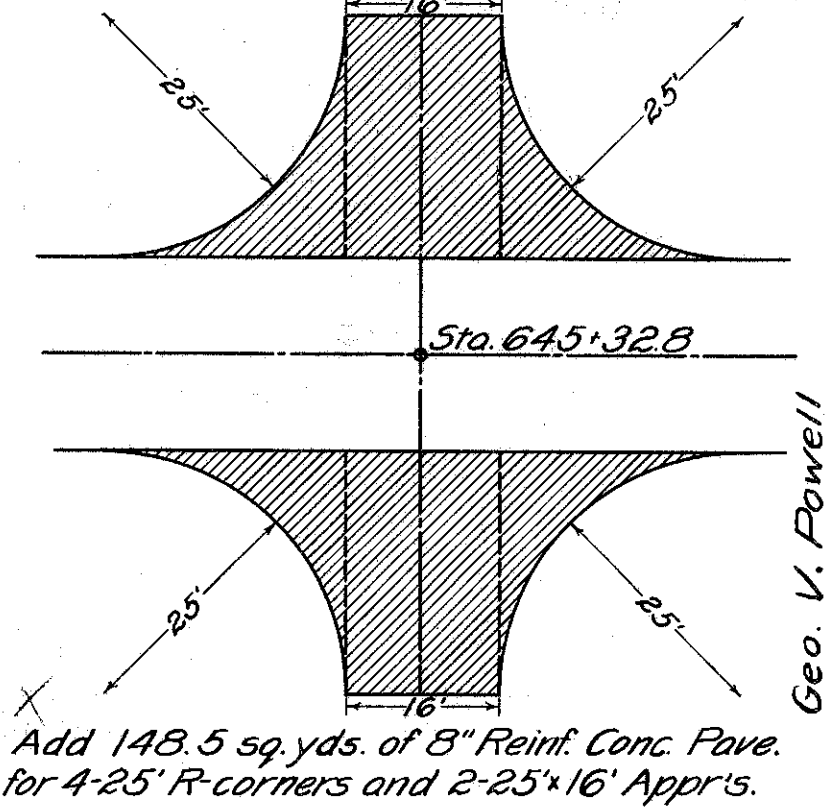


| FED. AID DIST. NO. | STATE | FED. AID PROJECT | FISCAL YEAR |
|--------------------|-------|------------------|-------------|
| 10 | OHIO | 608-A | 1931 |

10
33

SH.(I.C.H.) 220 SEC. E-3
WOOD COUNTY

DETAIL OF INTERSECTION
STA. 645+32.8



⑤ Sta. 641+51 Remove present V.S.P. Build Std. 15" x 48' Reinf. Conc. Pipe Culvert with 2 Std. No. 2 C.B.s. See detail drawing sheet No. 29. Present Sta. 641+32

Add 148.5 sq. yds. of 8" Reinf. Conc. Pave. for 4-25' R-corners and 2-25' x 16' Apprs.

⑦ Sta. 645+33 Build Std. 12" x 38' Reinf. Conc. Pipe Culv. with 1 Std. No. 2 C.B. on north side road headwall on south in place. See detail drawing sheet No. 29.

Sta. 645+52 to Sta. 650+00 448 lin. ft. of 6" V.S.P. req'd on left to connect with 6" field tile from west. Std. side ditch inlet req'd at Sta. 646+30

Sta. 641+51 to Sta. 642+05 54 lin. ft. of 15" Reinf. Conc. Pipe req'd on right.

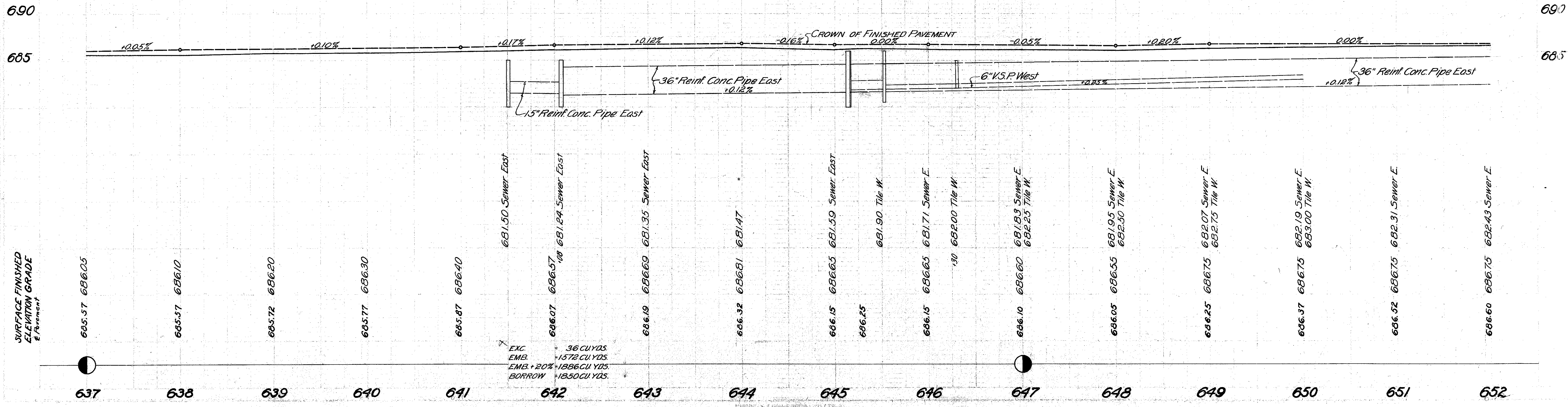
Sta. 645+30 Remove Side Road Conc. Arch Culvert Included in excavation.

⑥ Sta. 645+14 Remove old headwall and Corr. I.P. Build 12" x 45' Reinf. Conc. Pipe Culvert with Std. Side Road Headwall on left, and special C.B. on rt. See detail drawing sheet No. 29.

Sta. 642+08 to Sta. 652+60 10.52 lin. ft. of 36" Reinf. Conc. Pipe req'd in drainage ditch on right. Build Special C.B. Sta. 642+07. See detail drawing sheet No. 29.

P.I. Sta. 645+32.8 On Mon.

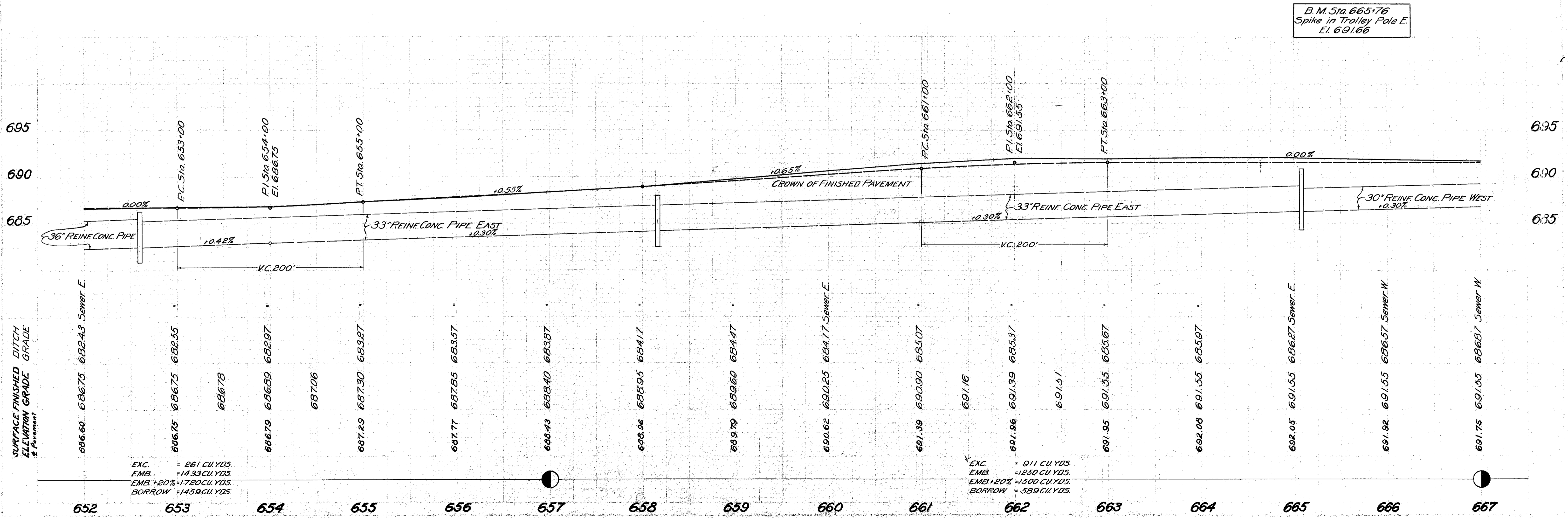
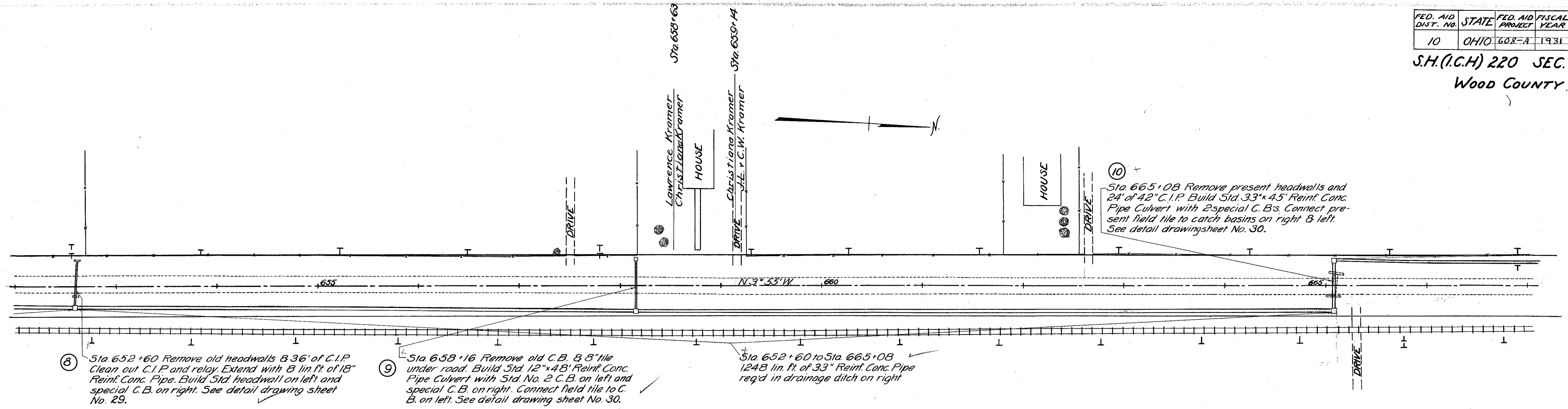
B.M. Sta. 645+15
S.E. cor. 5 wall E.
El. 687.02



| FED. AID DIST. NO. | STATE | FED. AID PROJECT | FISCAL YEAR |
|--------------------|-------|------------------|-------------|
| 10 | OHIO | 608-A | 1931 |

11
33

S.H.(I.C.H) 220 SEC. E-3
WOOD COUNTY

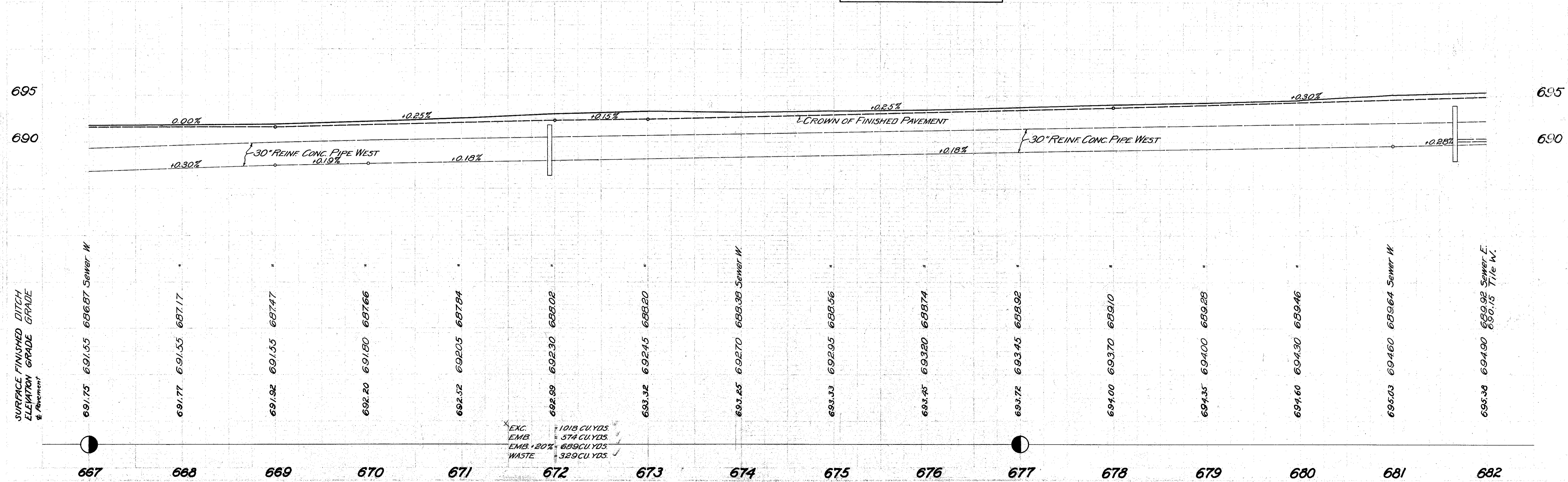
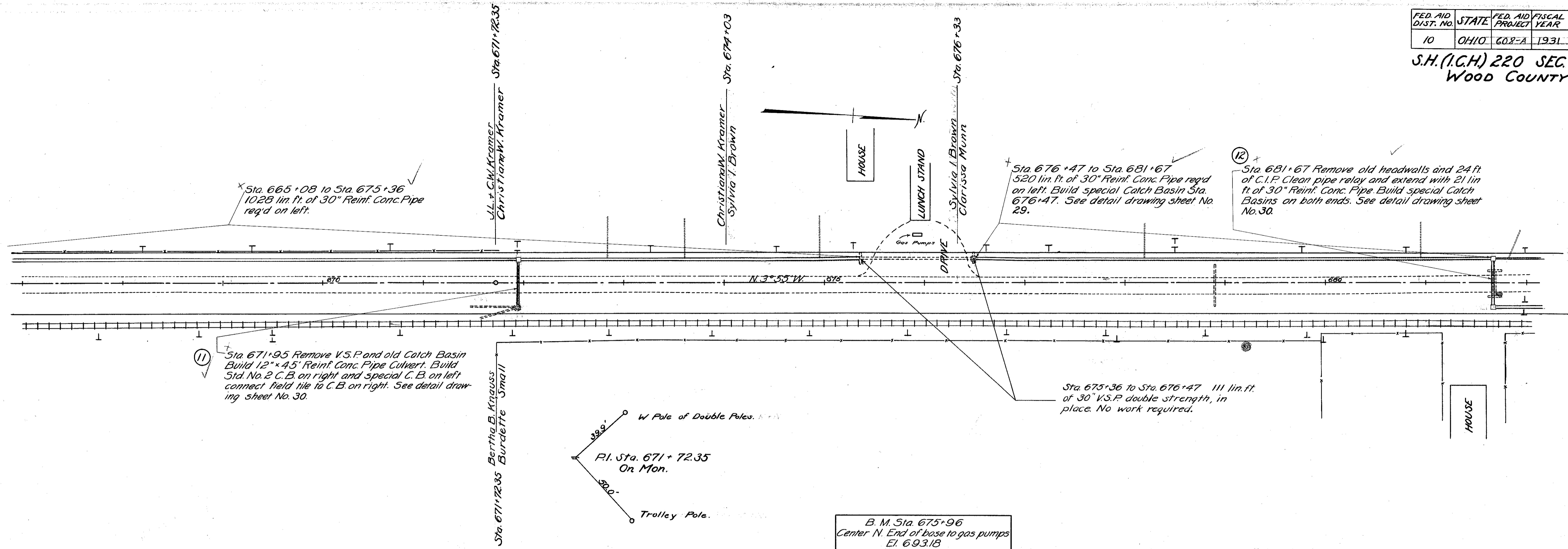


B.M. Sta 665+76
Spike in Trolley Pole E.
El. 691.66

| FED. AID DIST. NO. | STATE | FED. AID PROJECT | FISCAL YEAR |
|--------------------|-------|------------------|-------------|
| 10 | OHIO | 608-A | 1931 |

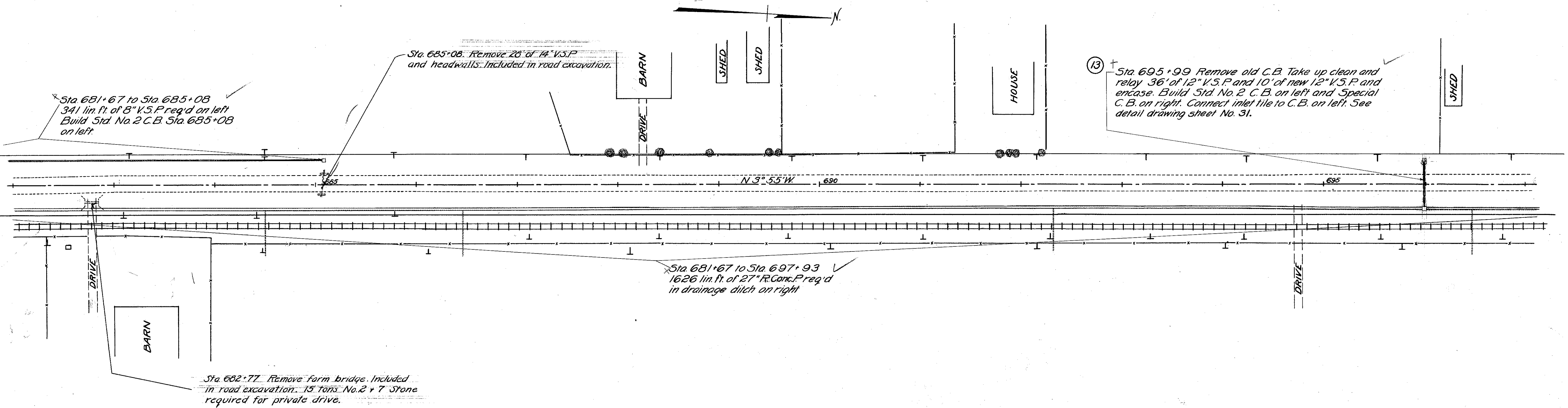
12
33

S.H.(I.C.H.) 220 SEC. E-3
WOOD COUNTY



| FED. AID DIST. NO. | STATE | FED. AID PROJECT | FISCAL YEAR |
|--------------------|-------|------------------|-------------|
| 10 | OHIO | 608-A | 1931 |

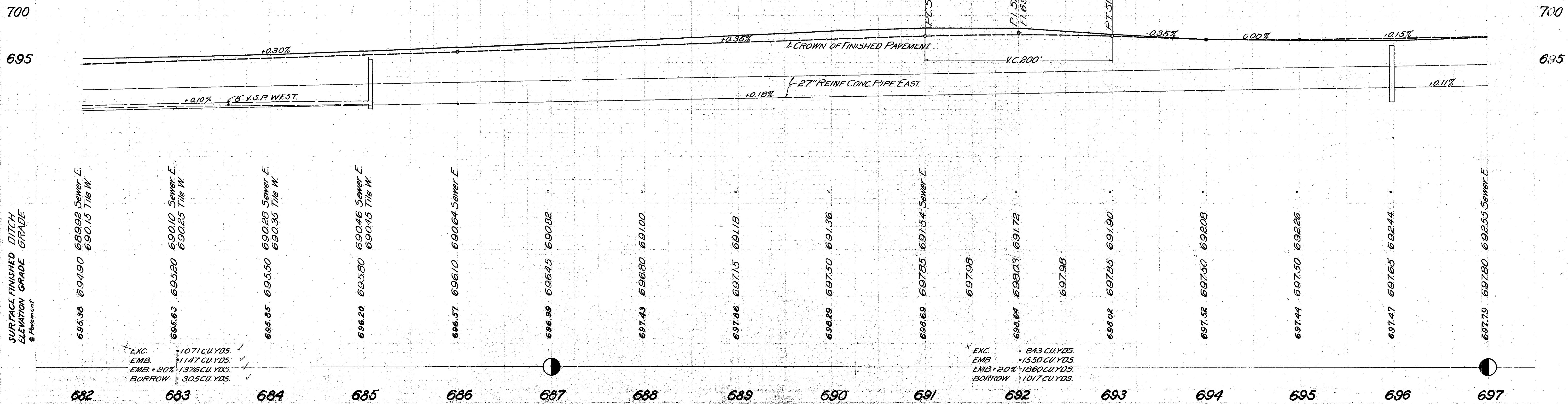
S.H.(I.C.H.) 220 SEC E-3
WOOD COUNTY



B.M. Sta 685+08
S.W. pt W. Headwall
El. 696.44

B.M. Sta 691+00
Spike in Trolley Pole Stop 54
El. 697.66

B.M. Sta 692+00
Top post to porch steps
El. 701.81



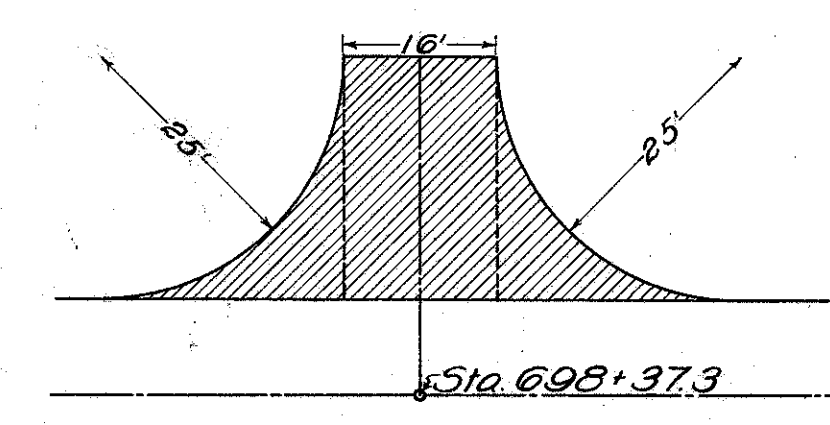
EXC. 1071 CU.YDS.
EMB. 1147 CU.YDS.
EMB + 20% 1376 CU.YDS.
BORROW 305 CU.YDS.

EXC. 843 CU.YDS.
EMB. 1550 CU.YDS.
EMB + 20% 1860 CU.YDS.
BORROW 1017 CU.YDS.

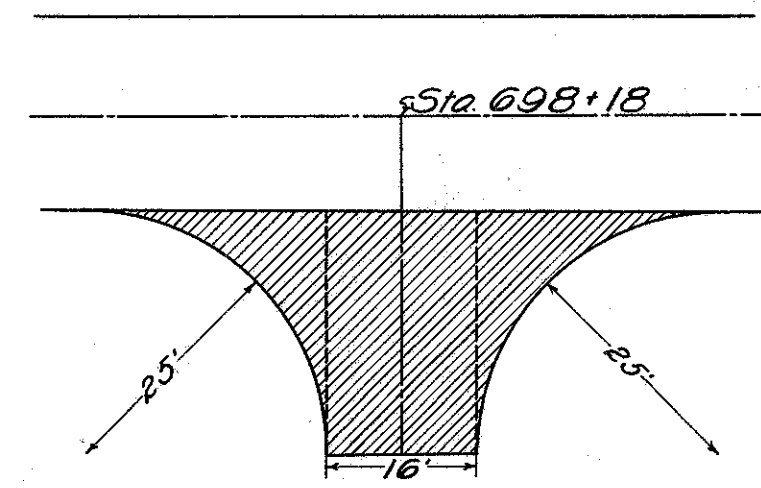
| FED. AID DIST. NO. | STATE | FED. AID PROJECT | FISCAL YEAR |
|--------------------|-------|------------------|-------------|
| 10 | OHIO | 608-A | 1931 |

S.H.(I.C.H.) 220 SEC. E-3
Wood County

14
33



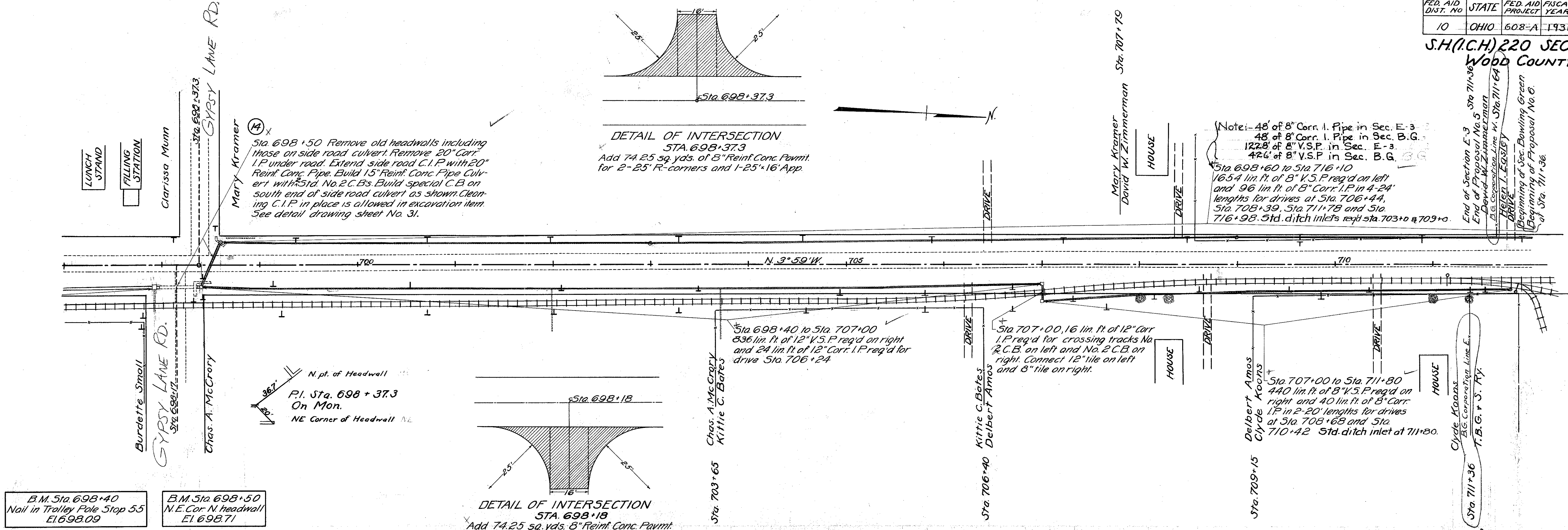
DETAIL OF INTERSECTION
STA. 698+37.3
Add 74.25 sq. yds. of 8" Reinf. Conc. Pavmt. for 2-25' R-corners and 1-25'x16' App.



DETAIL OF INTERSECTION
STA. 698+18
Add 74.25 sq. yds. 8" Reinf. Conc. Pavmt. for 2-25' R-corners and 1-16'x25' App.

Note: 48' of 8" Corr. I. Pipe in Sec. E-3
48' of 8" Corr. I. Pipe in Sec. B.G.
122.8' of 8" V.S.P. in Sec. E-3
42.6' of 8" V.S.P. in Sec. B.G.
Sta. 698+60 to Sta. 716+10
165.4 lin. ft. of 8" V.S.P. req'd on left and 96 lin. ft. of 8" Corr. I.P. in 4-24' lengths for drives at Sta. 706+44, Sta. 708+39, Sta. 711+78 and Sta. 716+98. Std. ditch inlets next Sta. 703+0 & 709+0.

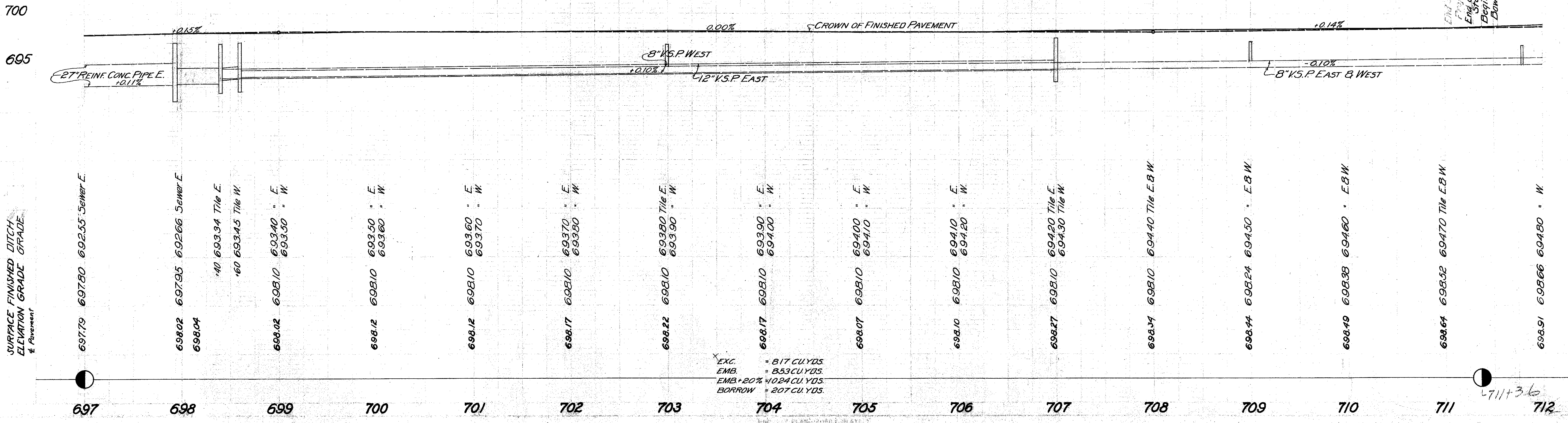
End of Section E-3 Sta. 711+36
End of Proposal No. 5
End of David W. Zimmerman
B.G. Corporation Line W. Sta. 711+64
Helen J. Egan
Beginning of Sec. Bowling Green
Beginning of Proposal No. 6
of Sta. 711+36



B.M. Sta. 698+40
Nail in Trolley Pole Stop 55
El. 698.09

B.M. Sta. 698+50
N.E. Cor. N. headwall
El. 698.71

N. pt. of Headwall
P.I. Sta. 698+37.3
On Mon.
NE Corner of Headwall



EXC. = 817 CU.YDS
EMB. = 853 CU.YDS
EMB+20% = 1024 CU.YDS
BORROW = 207 CU.YDS

711+36

