

O.D.O.T. DISTRICT 2 SURVEY OFFICE (USE ONLY)

PERSONNEL \_\_\_\_\_ REFERENCE NO. 1 SHEET 7 OF 36

NOTES HUSS DATE 4/12/01 ROUTE SR 25  
 H.C. ROUSOS WEATHER CLOUDY/WINDY COUNTY WOOD  
 R.C. VAN DUSEN TEMP. 72° TOWNSHIP LIBERTY  
 SECTION 36

DWG BY MILLER PID NO PID

T 4 N R 10 E

TYPE MONUMENT \_\_\_\_\_ P.K.NAIL \_\_\_\_\_

ON SURFACE - ~~BELOW~~ ON \_\_\_\_\_

OFFSET ☉ PAVEMENT ON \_\_\_\_\_ ~~LT:RT~~

\_\_\_\_\_ TO \_\_\_\_\_ EDGE PAVEMENT

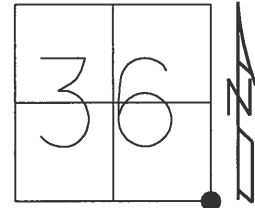
STATION: 81+57

HORIZ.DATUM: NAD83 2011

GEOID: NAVD88 2012A

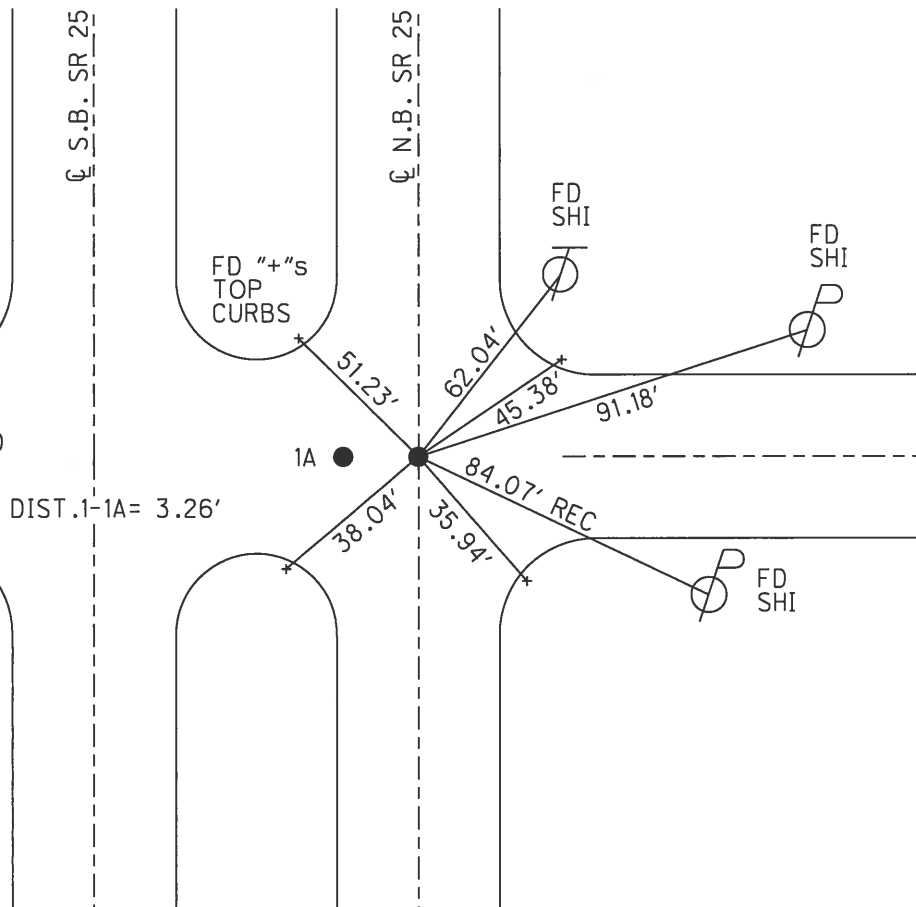
GRID: NORTHING: 580369.971

EASTING: 1652283.657



RECORD:  
 ☉ PAVEMENT  
 1958  
 FD P.K./WASHER  
 4/12/01, TMR  
 SET PK/WASHER  
 10-29-01, SAH  
 FD P.K.NAIL  
 REF1  
 5-30-18  
 10-1-18, JFO

☉ JERRY CITY RD  
 CR 23



# O.D.O.T. DISTRICT 2 SURVEY OFFICE

PERSONNEL

REFERENCE NO. 1

SHEET 4 OF 23

NOTES Huss

H.C. Rousos

R.C. VanDusen

DATE 4-12-01

WEATHER Pt Cldy - Windy

TEMP. +72°F

ROUTE SR-25

COUNTY Wood

TOWNSHIP Liberty

SECTION 36

T 4 N R 10 E

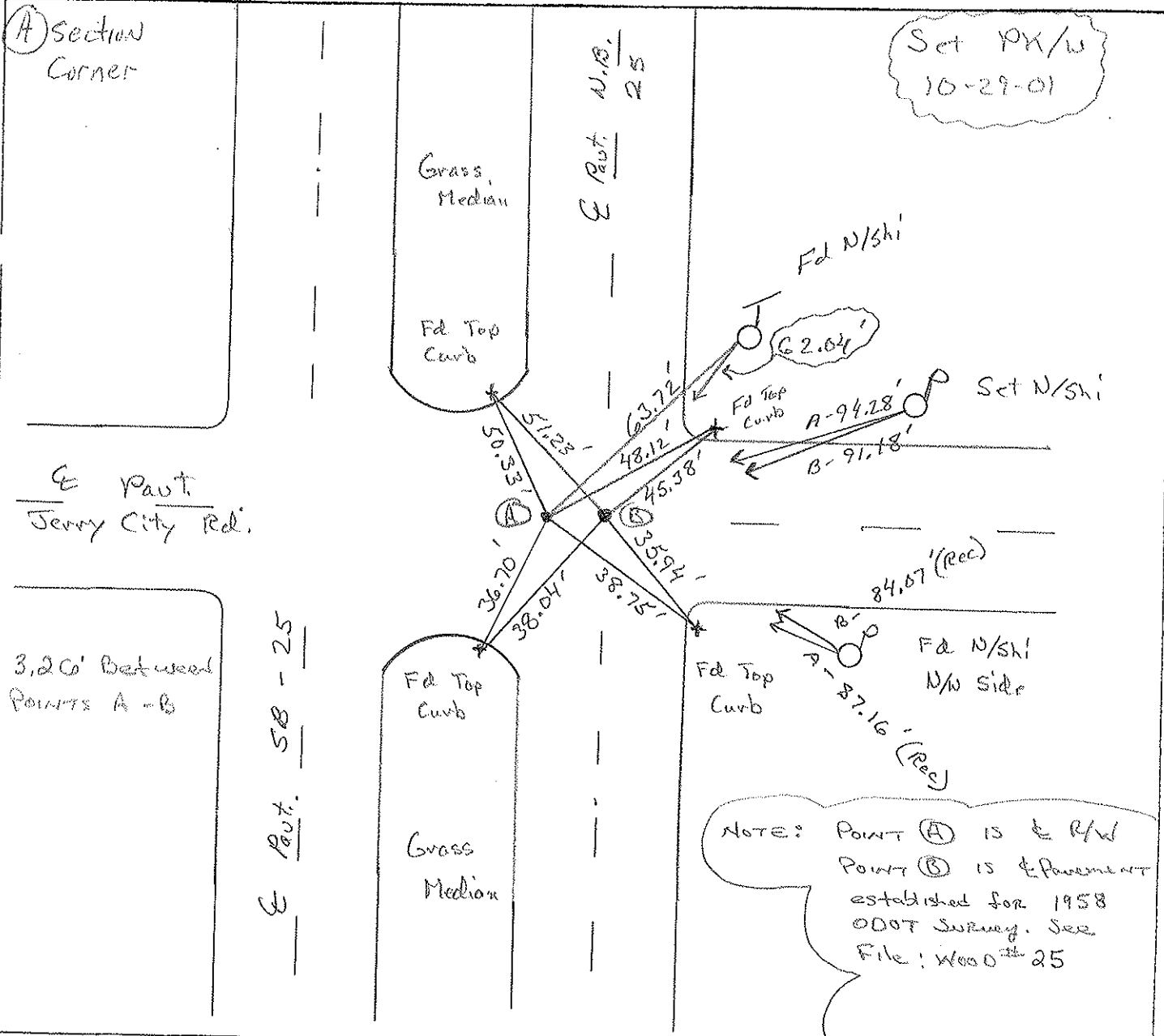
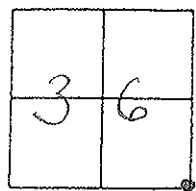
TYPE MONUMENT Ⓐ PK/W Ⓑ PK/W

ON SURFACE - ~~BELOW~~ Surf

LEFT - E Pav't. - RIGHT Ⓐ 3.2' Lt g B E Pav't.

Ⓐ 6.1' TO Lt. EDGE PAVEMENT

S.L.M. Ⓐ 81+57 Ⓑ 81+57



# O.D.O.T. DISTRICT 2 SURVEY OFFICE

PERSONNEL

REFERENCE NO. 1

SHEET 4 OF 23

NOTES HOFFMAN

H.C. LOSHRKE

R.C. BARNHISEL

DATE 3-22-91

WEATHER CLOUDY

TEMP. 55°

ROUTE SR 25

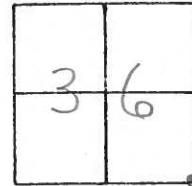
COUNTY WOOD

TOWNSHIP LIBERTY

SECTION 36

T. 4 N. R. 10 E

TYPE MONUMENT P.K./WASHER & P.K.  
 ON SURFACE - BELOW yes & 2" down  
 LEFT - & PAV'T. - RIGHT 3.2' LT. NBL & NBL  
 ⑥ 6.1 TO LT. EDGE PAVEMENT  
 S.L.M. ④ 81+57



3.26 between points

Set P.K.'s & Washers  
 5-31-91  
 MB

NOTE: RECORD SHOWS POINT "B" TO BE FD. ON & OF N.B.L. THE ORIGIN IS UNKNOWN

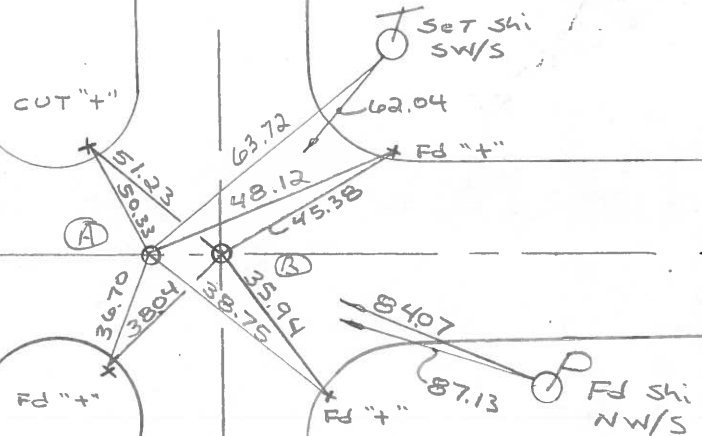
& PAVT LERRY CITY Rd.

PAVT S.B.L.

SR 25

SR 25

PAVT N.B.L.



County Wood S.R.-U.S. 25

Township LIBERTY

Section 36

T4N, R10E

Personnel HOFFMAN

Householder

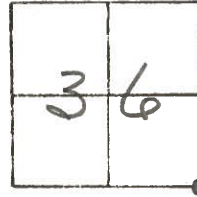
Loehrke

# 1

Date 6-9-81 8-25-81

Weather Clear

Temp. +75°

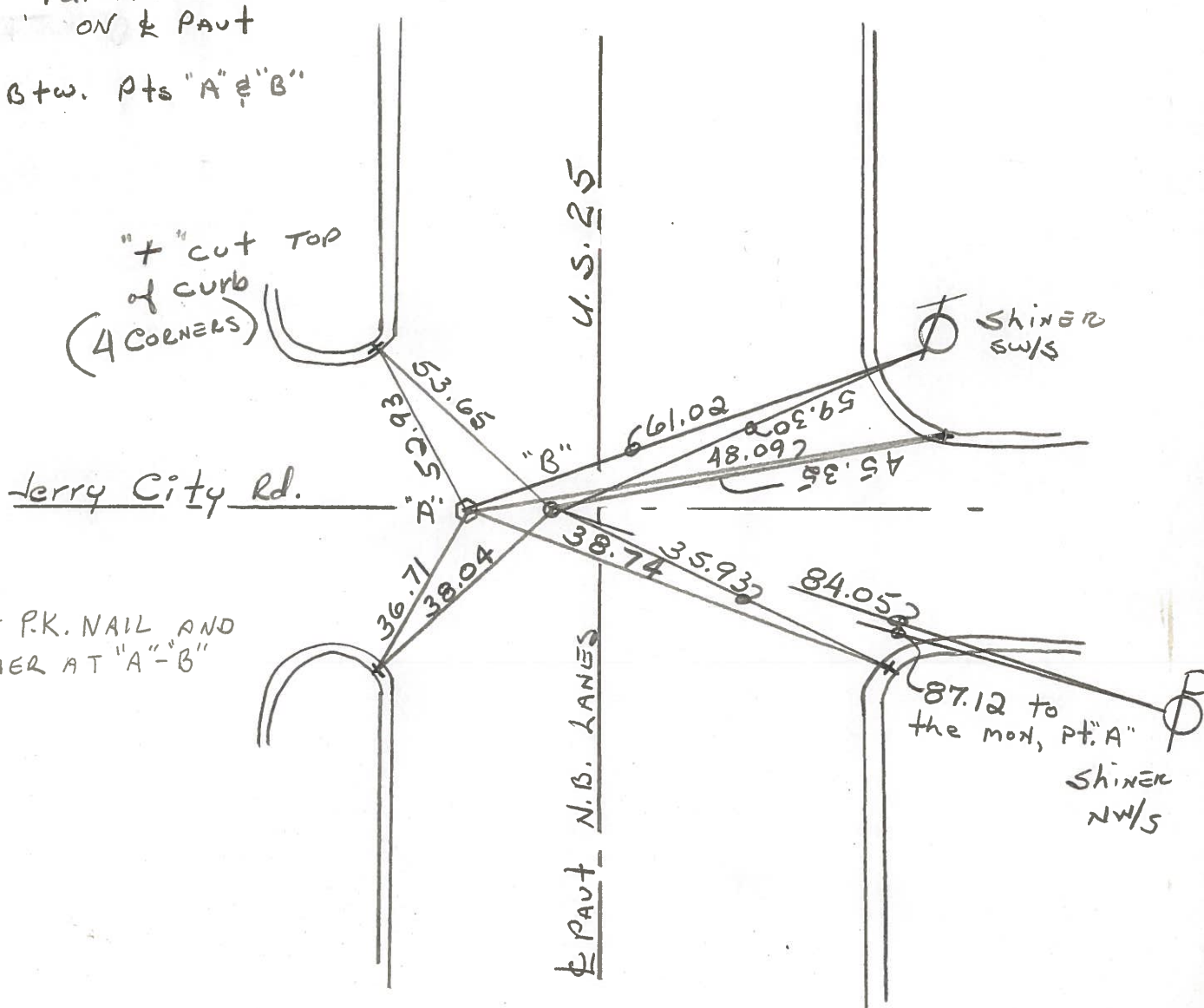


Pt. "A" Fd. BRASS MON @ SURFACE  
3.2' W. of & PAUT

PROJECT STA ± 81+96

Pt. "B" Fd. P.K. @ SURFACE  
ON & PAUT

3.24' Btw. Pts "A" & "B"



"+" cut TOP  
of CURB  
(4 CORNERS)

Jerry City Rd.

U.S. 25

PAUT N.B. LANES

SHINER SW/S

87.12 to  
the mon, Pt. "A"  
SHINER NW/S

SET P.K. NAIL AND  
WASHER AT "A"-"B"

O.D.O.T. DISTRICT 2 SURVEY OFFICE

SHEET OF

County WOOD <sup>U.S.</sup> ~~S.R.~~ 25

Date 7-2-71

Township LIBERTY-HENRY

Weather CLEAR

Section 36

Temp. 72°

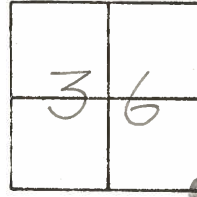
T4N, R10E

Personnel BURNSIDE

SMITH

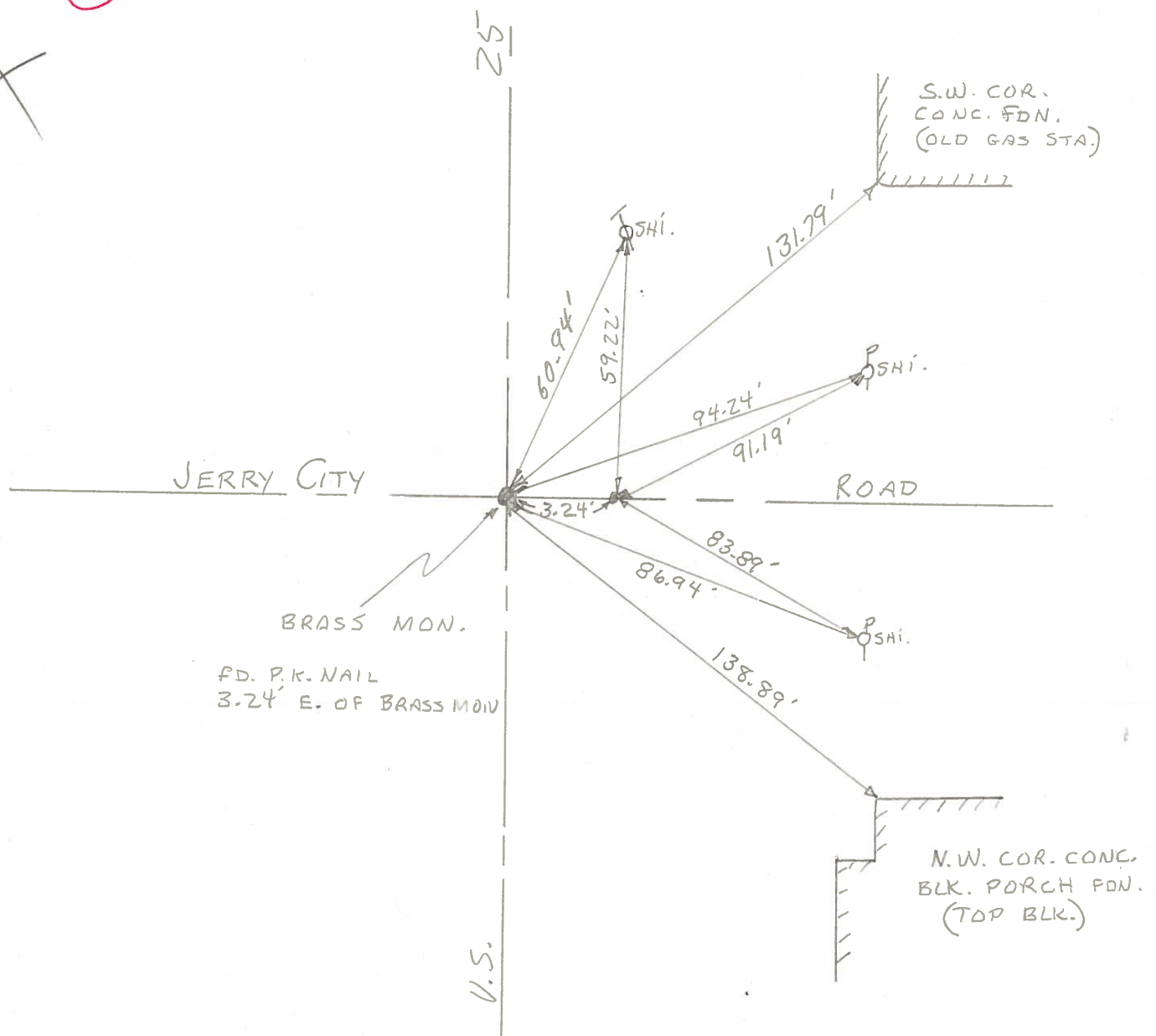
BOWERS

HOLCOMBE



#1

X



PERSONNEL TITLE PERSONNEL TITLE

COUNTY Wood

DATE OK 1-10-55

S. R. U.S. #25

WEATHER 4-1-60

SEC.

TEMP.

DESCRIPTION

LEFT

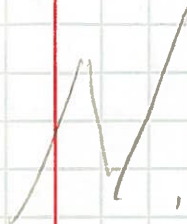
CENTER LINE

RIGHT

JOB NO.

#224

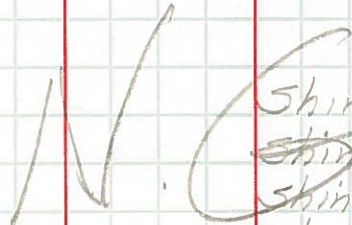
Sta. 160+10.3  
Henry twp. Cor.  
Brass plate  
P.K. nail.



Shiner in P.P. N.W. 61.92'  
Shiner in T.P. W.N.W. 74.50'  
Shiner in T.P. W.S.W. 70.50'  
Shiner in P.P. S.E. 44.71'

#225

Sta. 173+08.95  
Brass plate  
P.K. nail



Shiner in T.P. N.W. 72.68  
Shiner in cor. post W. 43.15  
Shiner in T.P. S.W. 77.35  
Shiner in P.P. S.E. 77.12

#227

Note: Mon. Raised & Greased 4-1-60  
Note: Mobera man. set from here, to B.G.

S.E. cor. 36 Liberty twp  
& Henry twp. line  
Jerry City Road intersca.  
Brass plate mtk. under  
lead cap on surface of  
Concrete pavement.

S.W. cor. Gas station fdn. N.E. 131.44  
Shiner in P.P. E.N.E. 80.71 80.61  
Shiner in T.P. N.N.E. 82.49 62.35  
N.W. cor. house fdn. 4th dock up S.E. 139.15  
N.E. cor. C.B. (outside) S.S.E. 68.84  
N.E. cor. to fnd. 3rd blk. above gnd. S.W.

①

#228

S.E. Shiner Brace Pole 107.82  
87.29  
86.92