

O.D.O.T. DISTRICT 2 SURVEY OFFICE (USE ONLY)

PERSONNEL _____ REFERENCE NO. 3A SHEET 11 OF 36

NOTES RHOADES DATE 5/30/18 ROUTE SR 25

H.C. O'DONNELL WEATHER CLOUDY COUNTY WOOD

R.C. TRENKA TEMP. 77° TOWNSHIP LIBERTY

SECTION 36

DWG BY MILLER PID NO PID

T 4 N R 10 E

TYPE MONUMENT _____ P.K.NAIL _____

ON SURFACE - ~~BELOW~~ ON _____

OFFSET \bar{C} PAVEMENT 2.8' LT : ~~RT~~

_____ TO _____ EDGE PAVEMENT

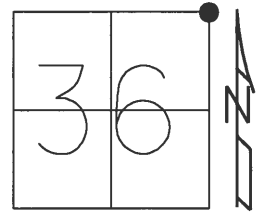
STATION: 134+55

HORZ.DATUM: NAD83(2011)

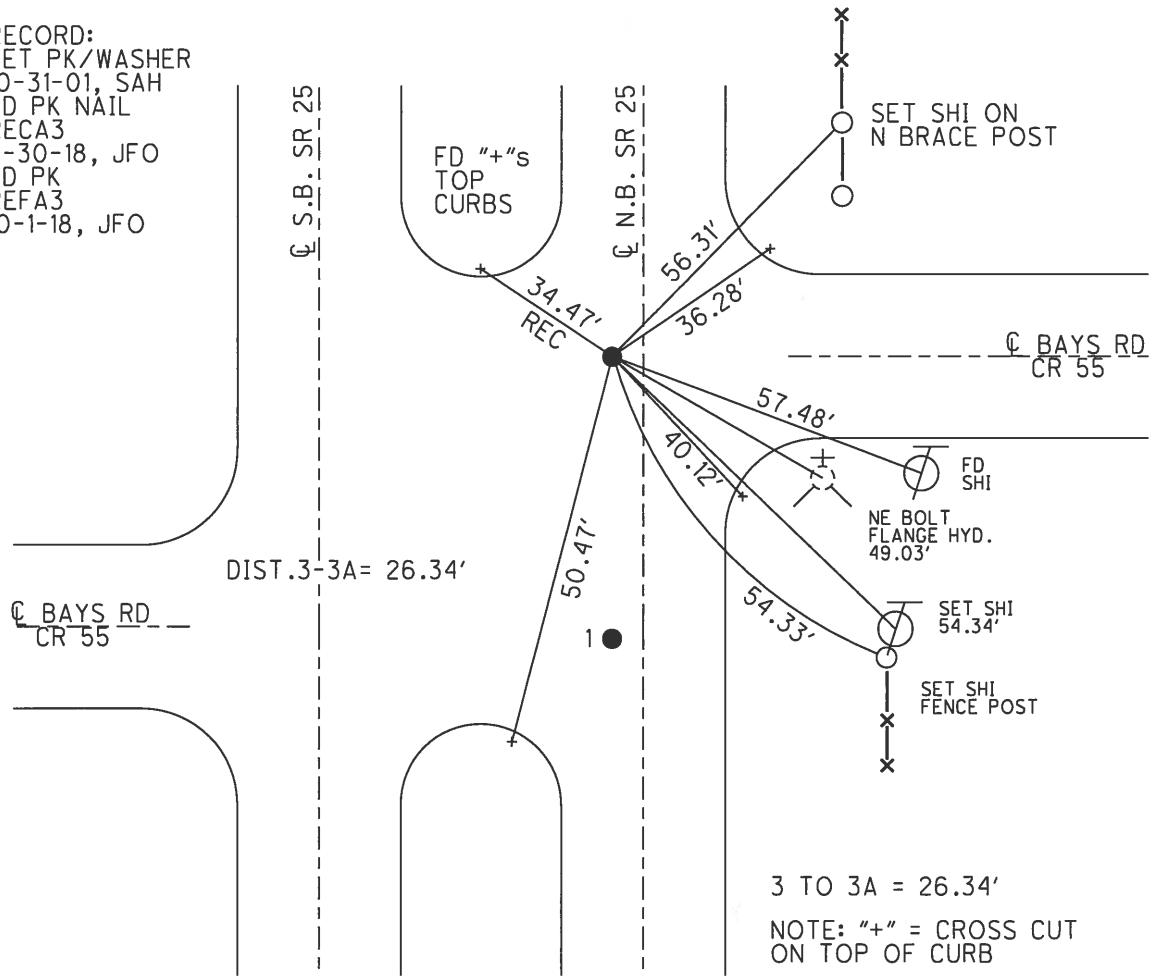
GEOID: NAVD88 2012A

GRID: NORTHING: 585668.412

EASTING: 1652354.031



RECORD:
 SET PK/WASHER
 10-31-01, SAH
 FD PK NAIL
 RECA3
 5-30-18, JFO
 FD PK
 REFA3
 10-1-18, JFO



O.D.O.T. DISTRICT 2 SURVEY OFFICE

PERSONNEL _____

REFERENCE NO. 3

SHEET 6 OF 23

NOTES Ausc

H.C. Rousos

R.C. Van Dusen

DATE 4-12-01

WEATHER Pt. Cldy - Windy

TEMP. 72°F

ROUTE SR-25

COUNTY Wood

TOWNSHIP Liberty

SECTION 36

T 4 N R 10 E

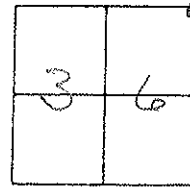
TYPE MONUMENT (A) PK/W (B) PK/W

ON SURFACE - BELOW Surface

LEFT - E PAV T. - RIGHT (A) 2.6' (B) 2.8'

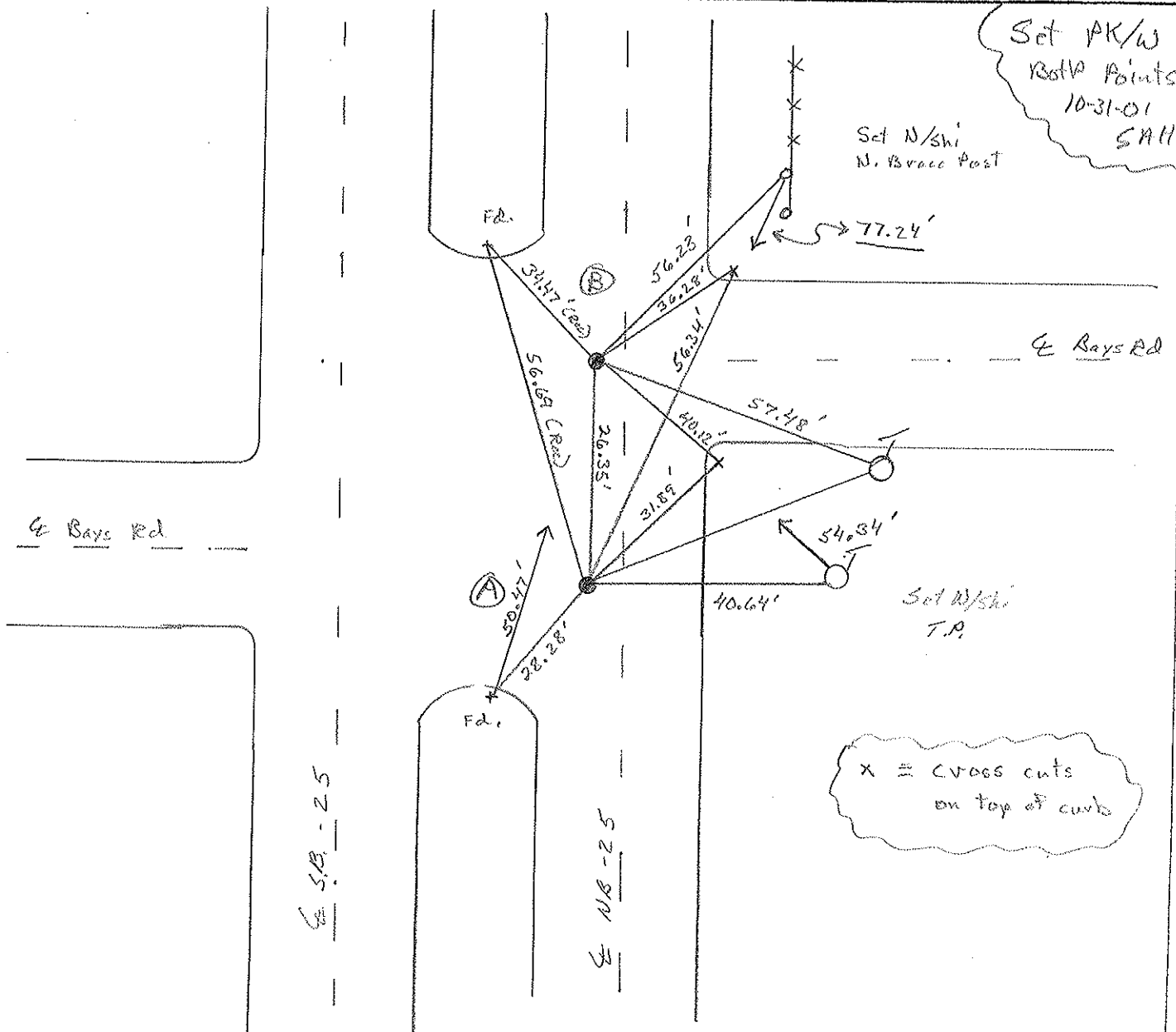
TO EDGE PAVEMENT

S.L.M. (A) 134+29 (B) 134+55



Set PK/W
Both Points
10-31-01
SAH

Set N/shi
N. Brace Post



O.D.O.T. DISTRICT 2 SURVEY OFFICE

PERSONNEL

REFERENCE NO. 3

SHEET 6 OF 23

NOTES Huss

H.C. Rousos

R.C. Van Dusen

DATE 4-12-01

WEATHER Pt. Cldy - Windy

TEMP. 72°F

ROUTE SR-25

COUNTY Wood

TOWNSHIP Liberty

SECTION 36

T 4 N R 10 E

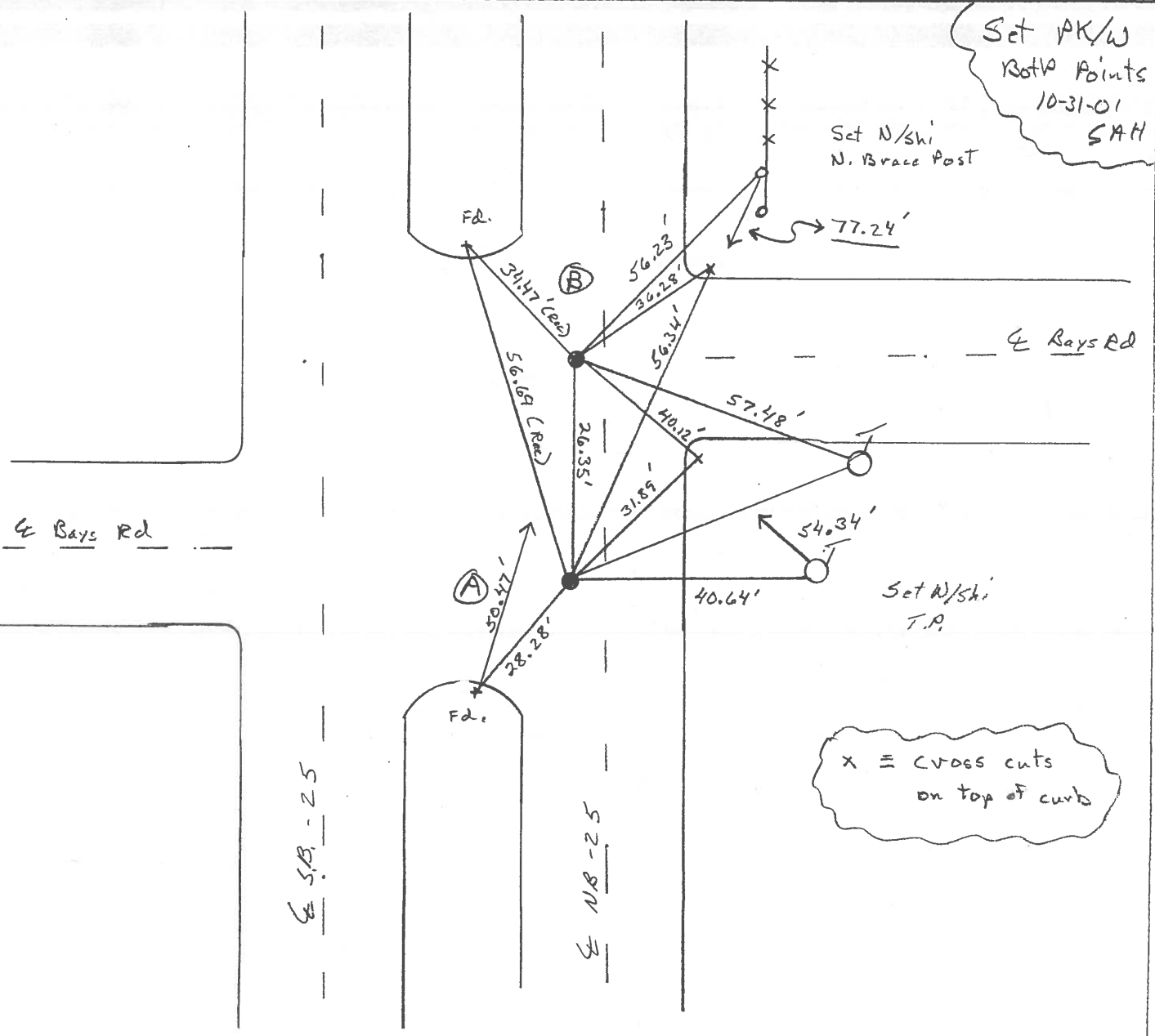
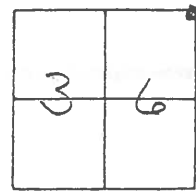
TYPE MONUMENT (A) PK/W (B) PK/W

ON SURFACE - BELOW Surface

LEFT - E PAV'T. - RIGHT (A) 2.6' (B) 2.8'

- TO - EDGE PAVEMENT

S.L.M. (A) 134+29 (B) 134+55



O.D.O.T. DISTRICT 2 SURVEY OFFICE

PERSONNEL

REFERENCE NO. 3

SHEET 6 OF 23

NOTES HOFFMAN

H.C. LOEHRKE

R.C. BARNHISEL

DATE 3-22-91

WEATHER CLOUDY

TEMP. 55°

ROUTE SR 25

COUNTY WOOD

TOWNSHIP LIBERTY

SECTION 36

T4 N R 10 E

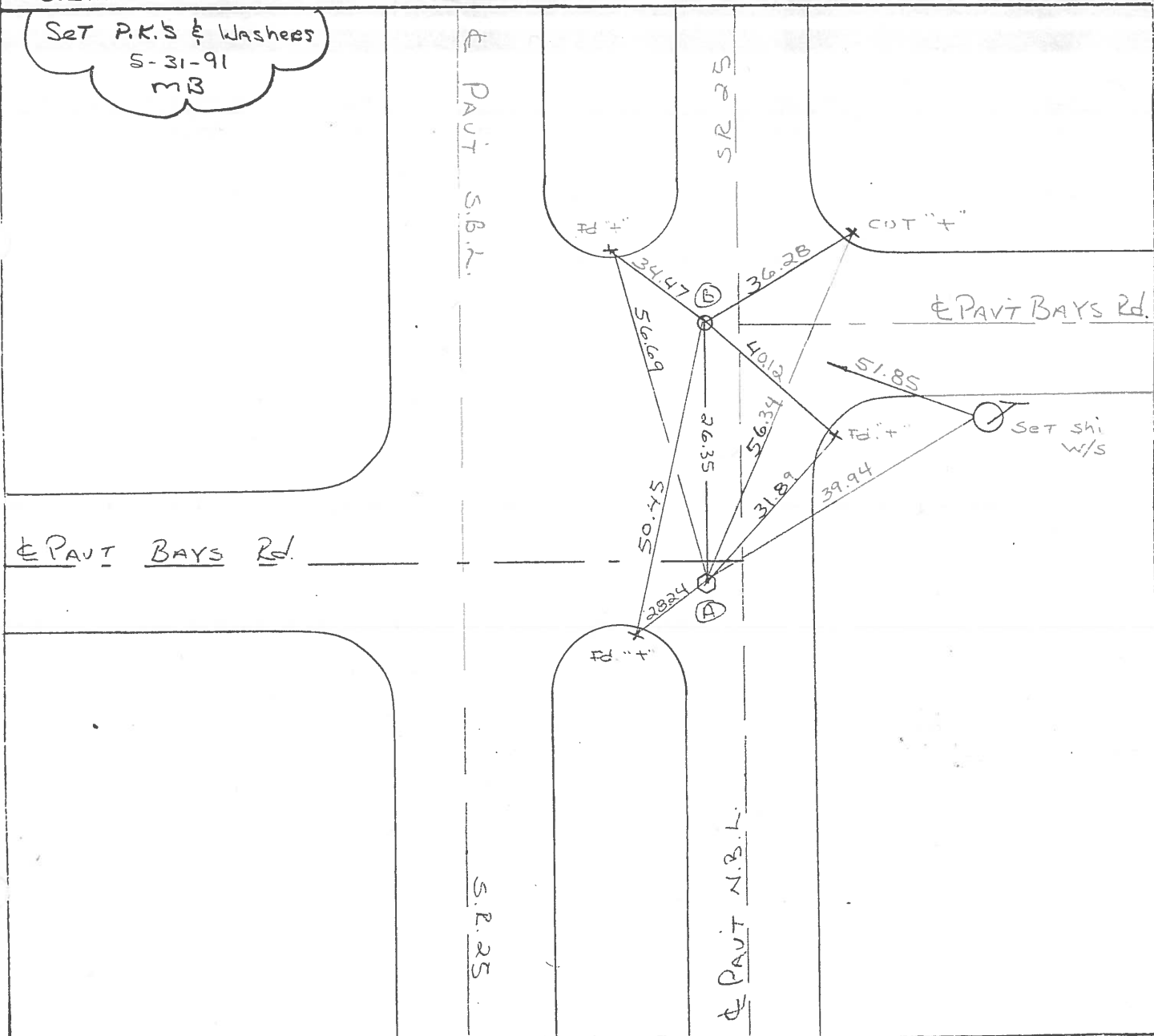
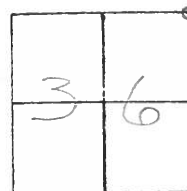
TYPE MONUMENT BRASS MONUMENT 1" P.K. / WASHER

ON SURFACE - BELOW 1 1/2" down from surface

LEFT - 0.6' PAV'T. - RIGHT 2.8'

8.7 TO LT. EDGE PAVEMENT

S.L.M. (A) = 134 + 29



County WOOD S.R. U.S. 25

Township LIBERTY

Section 36

T4N, R10E

Personnel Hoffman

Lochrke

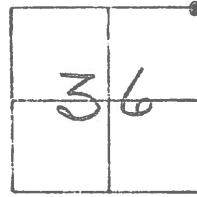
Householder

(3)

Date 6-9-81 8:25-81

Weather Cloudy

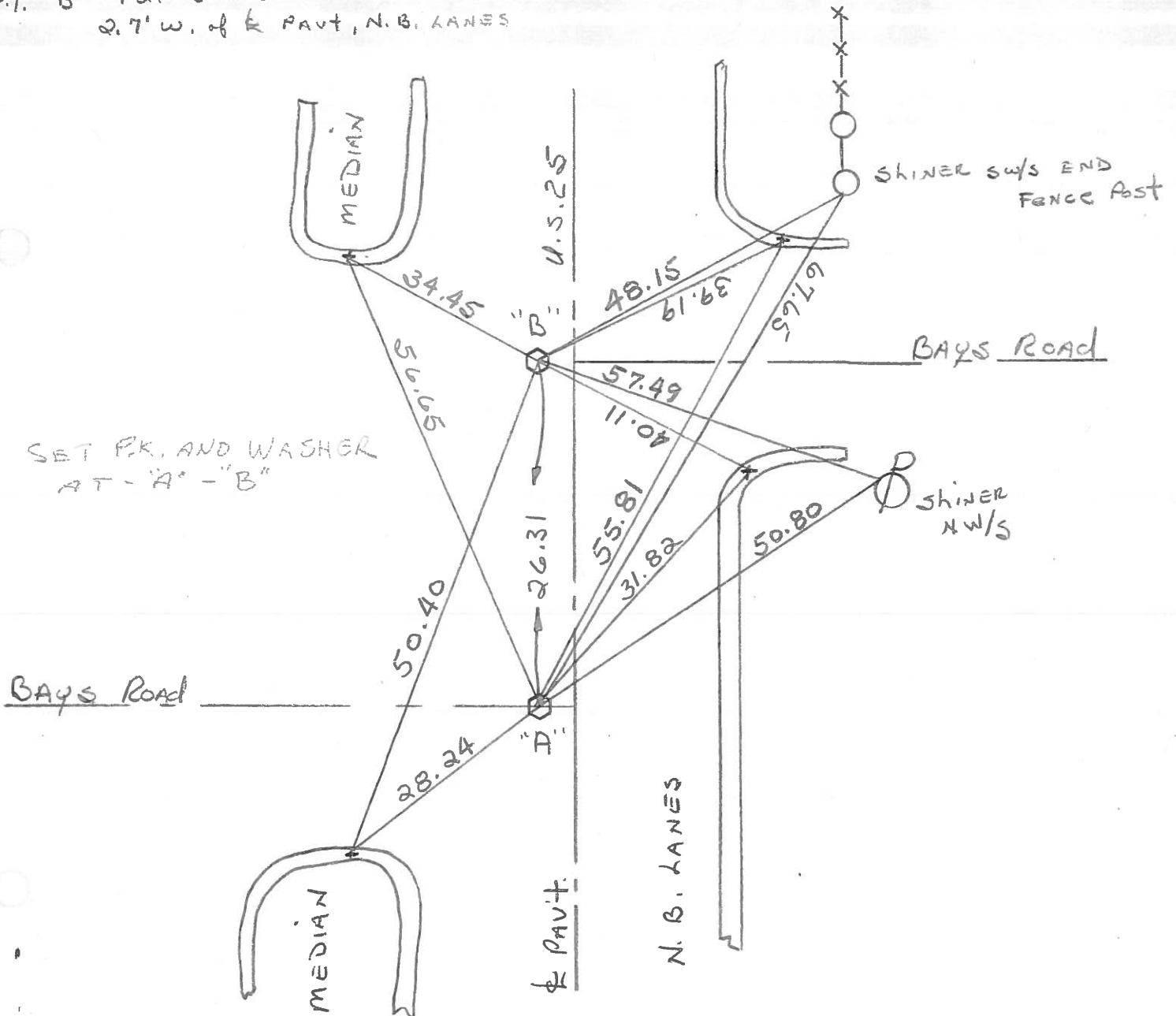
Temp. +75°



Pt. "A" Fd. BRASS MON. @ SURFACE
2.5' W. of & PAVT, N.B. LANES

PROJECT STA. ± 134+76

Pt. "B" Fd. BRASS MON. @ SURFACE
2.7' W. of & PAVT, N.B. LANES



County WOOD ^{U.S.} S.R. 25

Date 7-6-71

Township LIBERTY

Weather CLEAR

Section 36

Temp. 80°

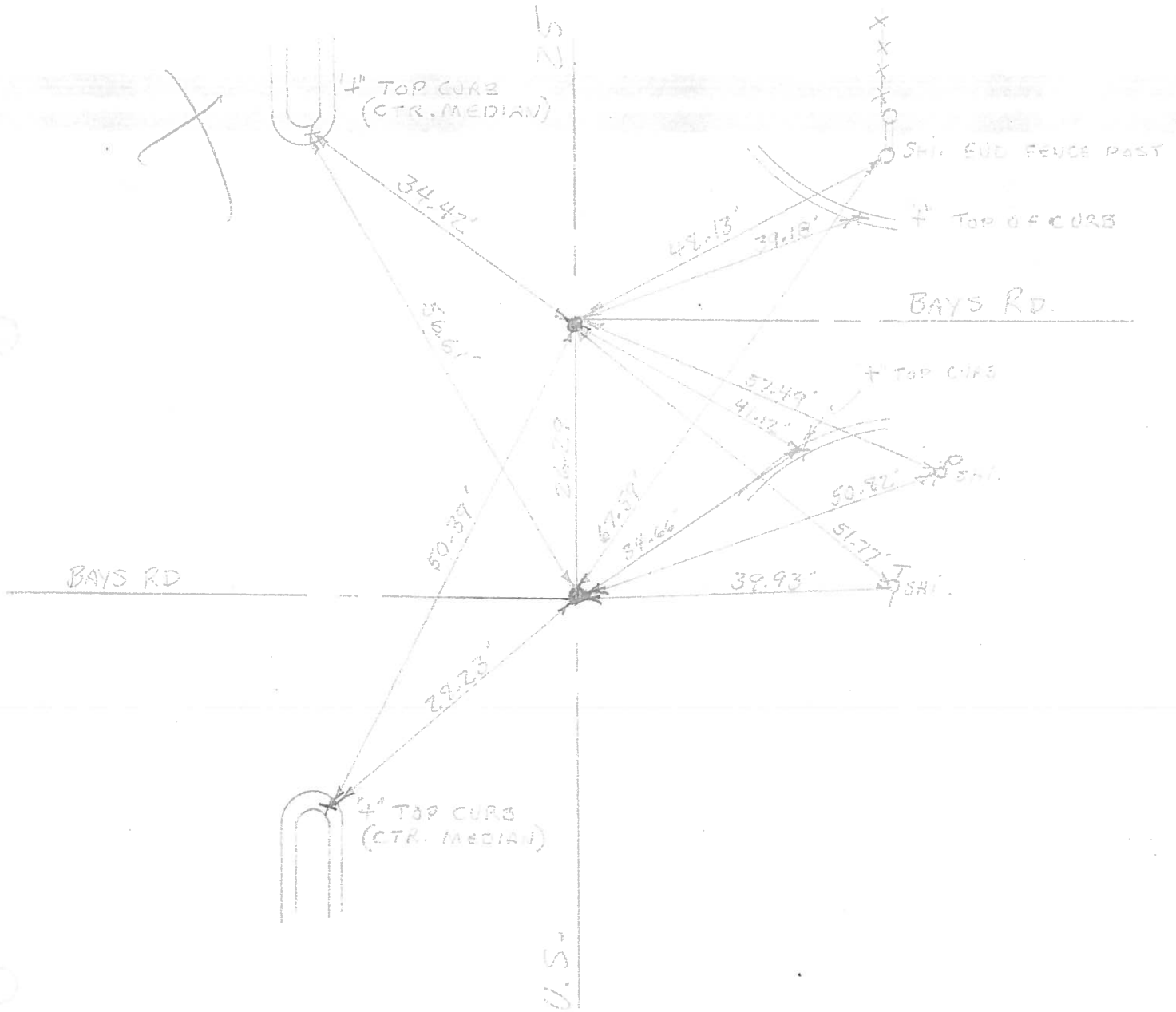
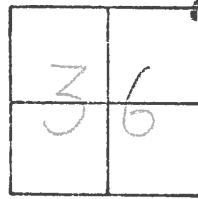
T4N, R10E

Personnel BURNSIDE

SMITH

BOWERS

(3)



PERSONNEL TITLE PERSONNEL TITLE

COUNTY

Wood

DATE

Checked 4/1/60

S. R.

U.S.#25

WEATHER

SEC.

TEMP.

DESCRIPTION

LEFT

CENTER LINE

RIGHT

JOB NO.

Sta. 350+21.7
E. 1/4 post sec. 36 Liberty
Twp.
Iron pipe

#229

X on E. end conc. Hdwl. W.N.W. 34.60'
Shiner in T.P. S.E. 58.40
Shiner in T.P. N.E. 70.34
N.E. cor. house fdn. S.W. 60.70

Sta. 376+60.2
N.E. Cor. sec. 36 Liberty
Twp. Bays Road West
Brass plate

#230

Shiner Core ^{Fence} Post N.E. 67.60
X on E. end conc. hdwl. N.W. 55.30
Shiner in P.P. S.W. 45.92
Shiner in T.P. S.E. 39.91 39.80
E. edge of pavement 14.5
W. edge of pavement 5.5
Shiner P. Pole E. 51.07

Sta. 376+86.7
N.W. cor. sec. 31 Portage
Twp. Bays Road East
Brass plate

③

#231

X E. end conc. hdwl. W. 48.63'
Shiner in P.P. S.W. 67.20'
Shiner in T.P. S.E. 51.58
Shiner in Cor. Post N.E. 48.15
Shiner in P. Pole S.E. 57.44
Shiner in T. Pole S.S.E. 51.69

Sta. 403+07.8
E. 1/4 post sec. 25 Liberty
Twp. W. edge N. Bound lane
Iron pipe over stone

#232

Shiner in P.P. N.W. 60.90
Shiner in twin T.P. S.E. 69.08
Plw. man. W. 65.15
W. edge of pavement E. 3.45
Shiner Core Post S.E. 39.07
Shiner Cor. Post N.E. 39.18
Shiner T. Pole N.N.E. 88.76