

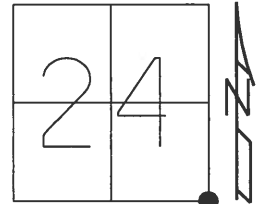
**O.D.O.T. DISTRICT 2 SURVEY OFFICE (USE ONLY)**

PERSONNEL \_\_\_\_\_ REFERENCE NO. 6 SHEET 15 OF 36

NOTES RHOADES DATE 5/30/18 ROUTE SR 25  
 H.C. O'DONNELL WEATHER CLOUDY COUNTY WOOD  
 R.C. TRENKA TEMP. 77° TOWNSHIP LIBERTY  
 SECTION 24

DWG BY MILLER PID NO PID T 4 N R 10 E

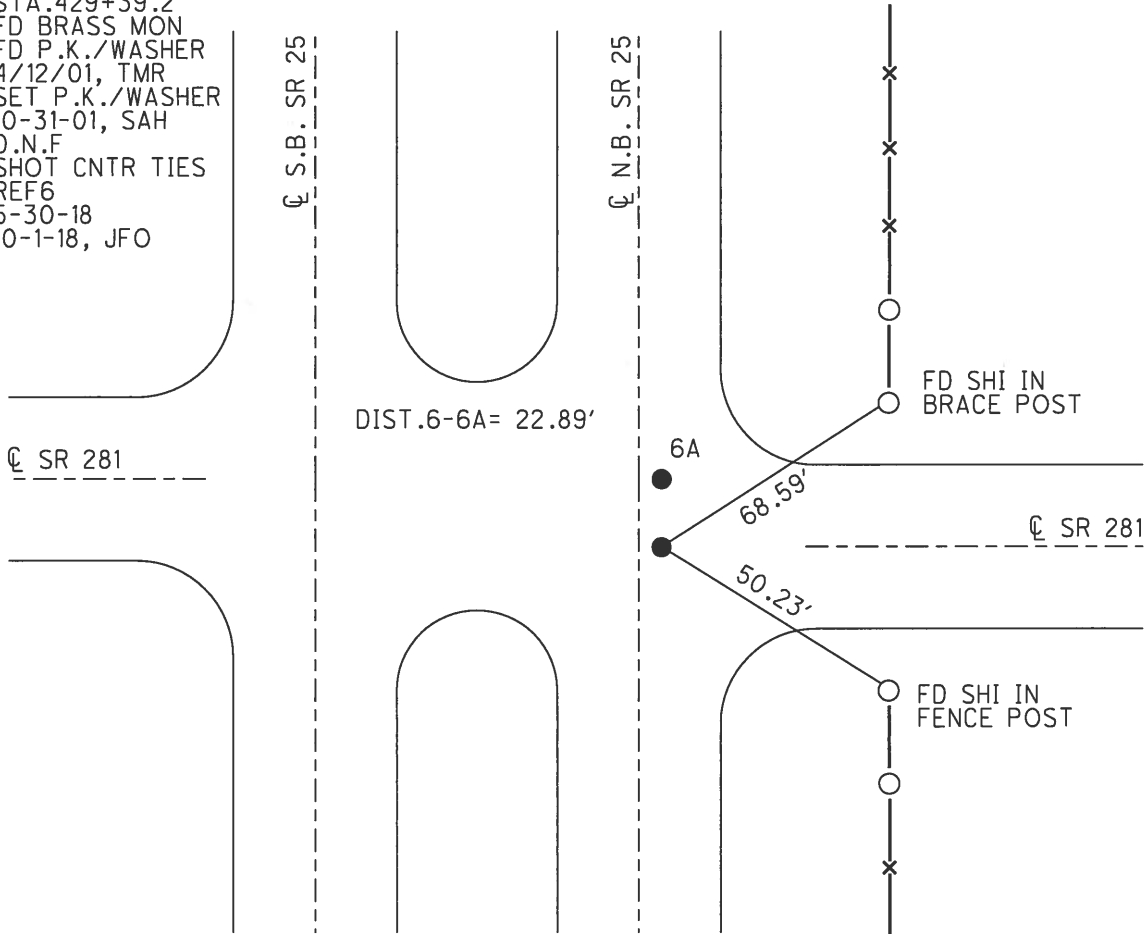
TYPE MONUMENT \_\_\_\_\_ CNPT \_\_\_\_\_  
 ON SURFACE - ~~BELOW~~ ON \_\_\_\_\_  
 OFFSET  $\text{\textcircled{C}}$  PAVEMENT 2.2' ~~TT~~ : RT  
 - TO - EDGE PAVEMENT  
 STATION: 30+62.40



HORZ. DATUM: NAD83(2011) GEOID: NAVD88 2012A  
 GRID: NORTHING: 590920.741 EASTING: 1652388.770

RECORD:  
 STA. 429+39.2  
 FD BRASS MON  
 FD P.K./WASHER  
 4/12/01, TMR  
 SET P.K./WASHER  
 10-31-01, SAH  
 D.N.F  
 SHOT CNTR TIES  
 REF6  
 5-30-18  
 10-1-18, JFO

NOTE: PORTAGE TWP  
 N.W. COR SEC 30



# O.D.O.T. DISTRICT 2 SURVEY OFFICE

PERSONNEL

REFERENCE NO. 6

SHEET 9 OF 23

NOTES Huss

H.C. Rousos

R.C. VanDusen

DATE 4-12-01

WEATHER Pt. Cldy. - Windy

TEMP. +72°F

ROUTE SR-25

COUNTY Wood

TOWNSHIP Liberty

SECTION 24

T 4 N R 10 E

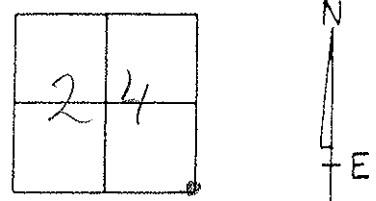
TYPE MONUMENT (A) PK/w (B) PK/w

ON SURFACE - ~~BELOW~~ Surface

~~LEFT~~ PAV'T. - (RIGHT) (A) 2.2' (B) 2.2'

TO EDGE PAVEMENT

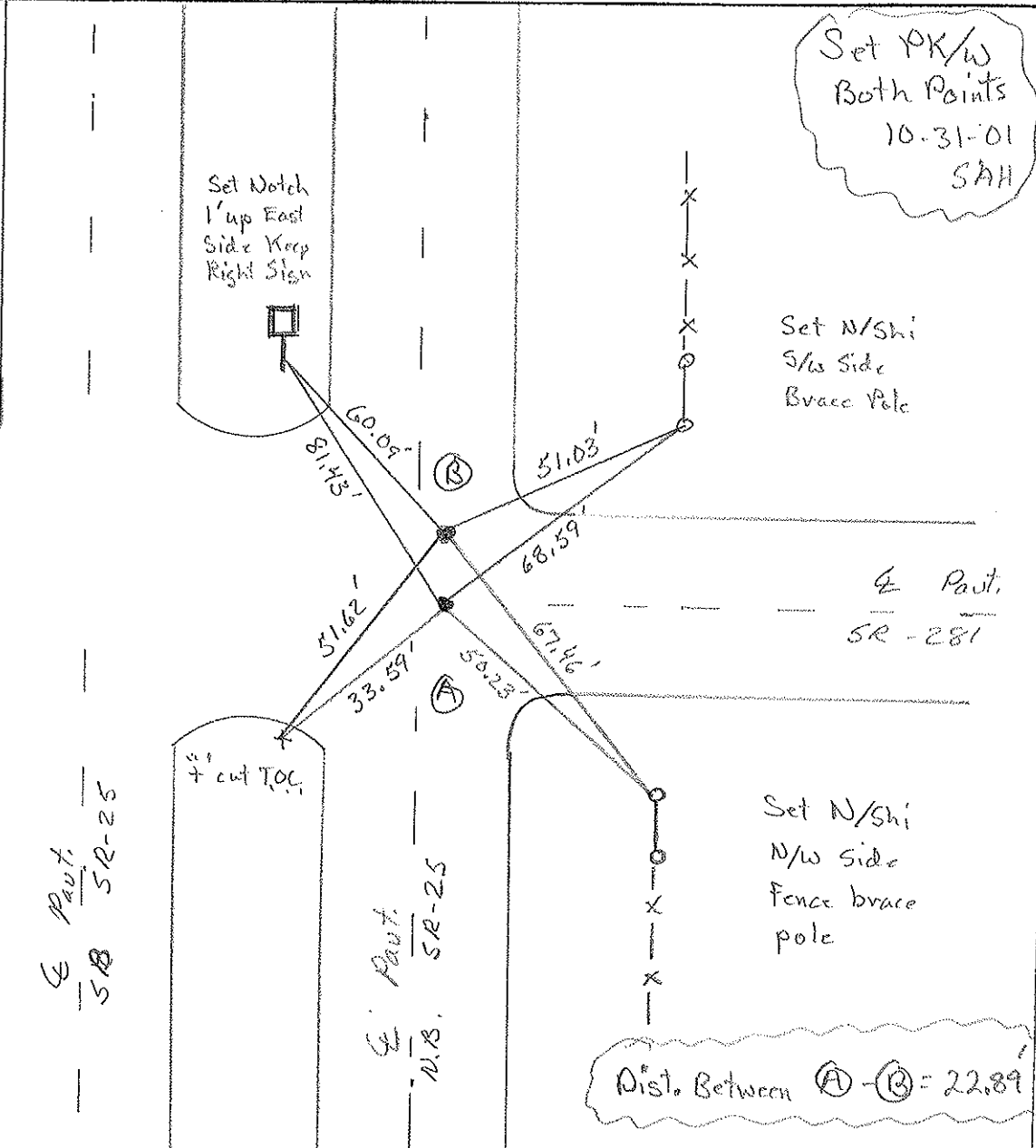
S.L.M. (A) 187+06 (B) 187+29



Record:  
 (A) Portage Twp  
 N.W. Cor. Sec. 30  
 Brass Mon.  
 Sta 429+39.2  
 (B) Liberty Twp.  
 S.E. Cor Sec 24  
 Brass Mon.  
 429+61.95

E Pavt.  
SR-281

E Pavt.  
SR-25



Dist. Between (A)-(B) = 22.89'

# O.D.O.T. DISTRICT 2 SURVEY OFFICE

PERSONNEL

REFERENCE NO. 6

SHEET 9 OF 23

NOTES HOFFMAN

H.C. LOEHRKE

R.C. BARNHISEL

DATE 3-26-91

WEATHER OVERCAST

TEMP. 55°

ROUTE SR 25

COUNTY WOOD

TOWNSHIP LIBERTY

SECTION 24

T4 N R 10 E

"A" & "B"

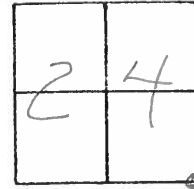
TYPE MONUMENT PK/WASHER PK/washer

ON SURFACE - BELOW YES YES

LEFT-~~C~~ PAVT. - RIGHT 9.3' 9.3'

TO EDGE PAVEMENT

S.L.M. PT. "A" = 187+06



Set P.K.'s & Washers  
6-5-91  
MB

PAVT S.B.L.

SR 25

CUT "+"  
TOP OF CURB

Fd. Shi  
SW/S  
ENO POST

PAVT SR 281 WEST

POINT "B"

RECORD: LIBERTY TWP  
S.E. COR. SEC. 24  
BRASS MONUMENT  
Sta. 429+61.95

PAVT SR 281 EAST  
IS NORTH of  
POINT "A"

Fd "+"  
TOP OF CURB

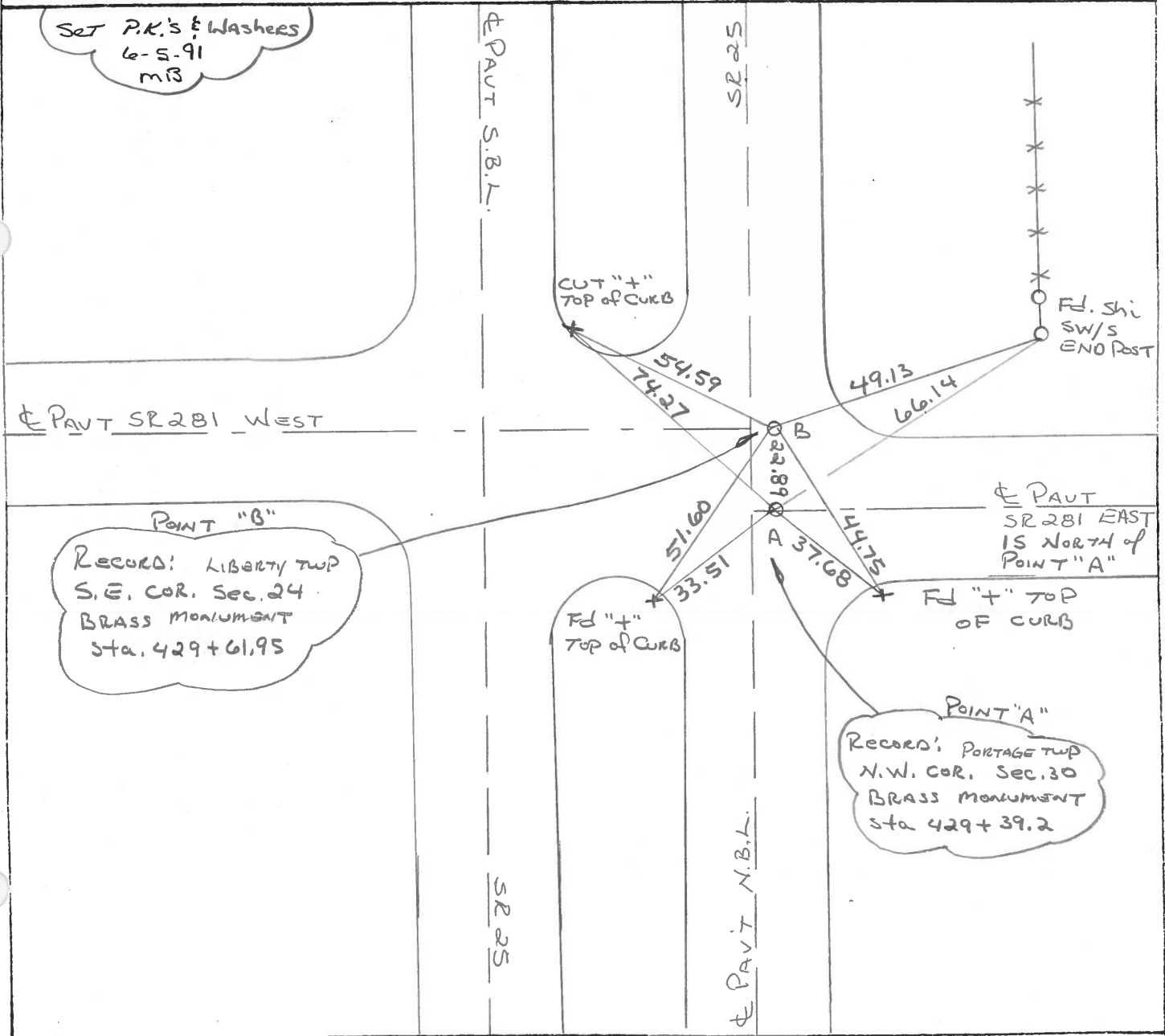
Fd "+" TOP  
OF CURB

POINT "A"

RECORD: PORTAGE TWP  
N.W. COR. SEC. 30  
BRASS MONUMENT  
Sta. 429+39.2

SR 25

PAVT N.B.L.



County Wood S.R.-U.S. 25

Date 6-10-81 8-25-81

Township Liberty

Weather cloudy

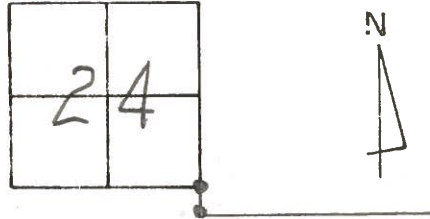
Section 24

Temp. +70°

T4N, R10E

Personnel HOFFMAN  
Householder

# 6

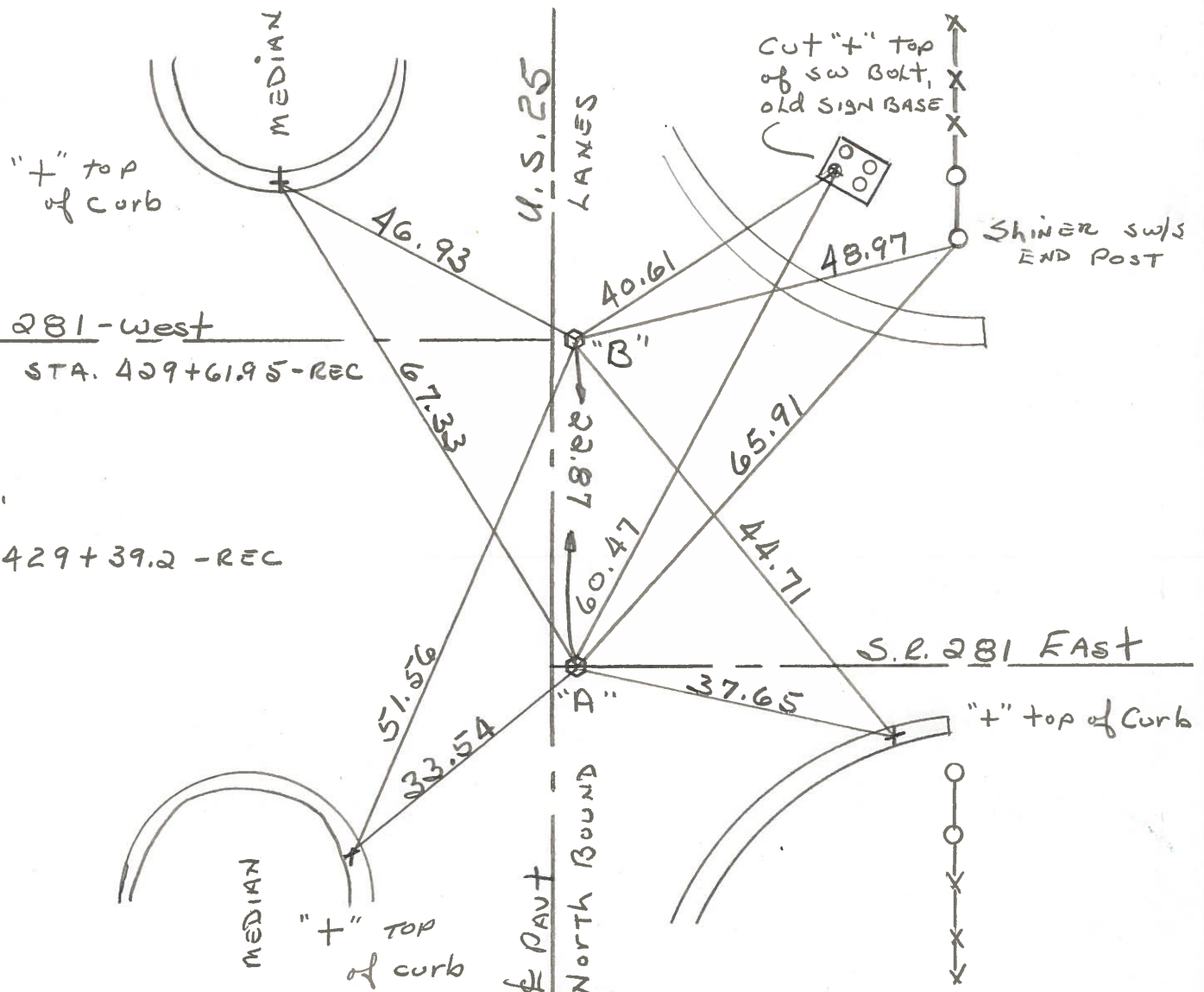


Pt. "A" Fd. BRASS MON. @ SURFACE  
2.2' E. of & PAUT, N.B. LANES

PROJECT STA. 187+64

Pt. "B" Fd. BRASS MON. @ SURFACE  
2.2' E. of & PAUT, N.B. LANES

SET P.K. & WASHER @  
"A" & "B"



O.D.O.T. DISTRICT 2 SURVEY OFFICE

SHEET

OF

County WOOD <sup>U.S.</sup> S.R. 25

Date 7-6-71

Township LIBERTY

Weather CLEAR

Section 24

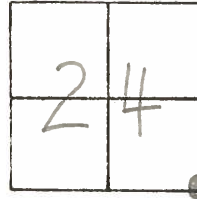
Temp. 82°

T4N, R10E

Personnel BURNSIDE

SMITH

BOWERS



#6

X  
S-E. COR. SEC. 24  
LIBERTY TWP.  
BRASS MON.  
STA. 429+61.95

NEAR EDGE  
12" STEEL LIGHT POLE

SHI IN. END  
FENCE POST

S.R. 281 - WEST

25

22.87'

40.19'

48.93'

59.88'

65.79'

66.27'

44.65'

S.R. 281 - EAST

37.63'

49.85'

N.W. COR. SEC. 30  
PORTAGE TWP.  
BRASS MON.  
STA. 429+39.2

SHI. IN END  
FENCE POST

U.S.





PERSONNEL TITLE PERSONNEL TITLE

COUNTY Wood DATE 4-5-60

S. R. U.S. #25 WEATHER

SEC. TEMP.

DESCRIPTION LEFT CENTER LINE RIGHT JOB NO.

DESCRIPTION	LEFT	CENTER LINE	RIGHT	JOB NO.
Sta. 429+39.2 N.W. cor. sec. 30. Portage Twp. Brass plate in & Pavement.	22.84 South of Point #234		Shiner in End Post N.E. Shiner in P.P. W.S.W. Shiner in T.P. N.E. X on E. pt. Hdwl. N.W. Conc. Flw mon. S.E. Shiner in End Post S.E. Shiner in Twin T. Pole S.S.E.	64.78 41.29 67.20 66.93 63.80 52.90 49.77 91.81
	#233			
Sta. 429+61.95 S.E. cor. sec. 24 Liberty Twp. Brass plate & of pavement. ok 12-9-57	22.84 North #233		Shiner in t.P. N.E. Shiner in P.P. S.W. X on E. pt. Hdwl. W.N.W. Conc. Flw mon. S.E. Shiner in End Post S.E. Shiner in End Post N.E.	50.34 49.33 51.22 69.88 66.15 48.18
	#234			
Sta. 455+74.5 E. 1/4 post sec. 24 Liberty Twp. Brass plug, top of plate gone			Shiner in T.P. S.S.E. Shiner in T.P. 79.20 N.N.E. Shiner in P.P. W.N.W. Wedge part. 5.9 Edge part. 14.0 Shiner in End Post N.N.E. Shiner in End Post N.E.	79.25 81.46 77.33 38.03 51.89 52.04 40.70 40.63
	#235			
Sta. 482+71.65 S.E. cor. sec. 13 Liberty Twp. MERMILL Rd. Brass plate in & part.			Shiner in P.P. N.W. Shiner in P.P. E.N.E. S.E. cor. brick chimney of gas station N.W. Shiner 10' <sup>walnut</sup> Ash N.N.W. Shiner T. Pole S.E.	55.22 73.29 101.15 68.38 49.66
	#236			