

O.D.O.T. DISTRICT 2 SURVEY OFFICE (USE ONLY)

PERSONNEL

REFERENCE NO. 6 A

SHEET 16 OF 36

NOTES RHOADES DATE 5/30/18

H.C. O'DONNELL WEATHER CLOUDY

R.C. TRENKA TEMP. 77°

ROUTE SR 25

COUNTY WOOD

TOWNSHIP LIBERTY

SECTION 24

DWG BY MILLER PID NO PID

T 4 N R 10 E

TYPE MONUMENT CNPT

ON SURFACE - ~~BELOW~~ ON

OFFSET \varnothing PAVEMENT 2.2' ~~LT~~ : RT

- TO - EDGE PAVEMENT

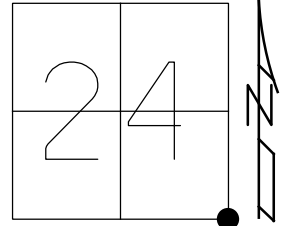
STATION: 187+29

HORZ.DATUM: NAD83(2011)

GEOID: NAVD88 2012A

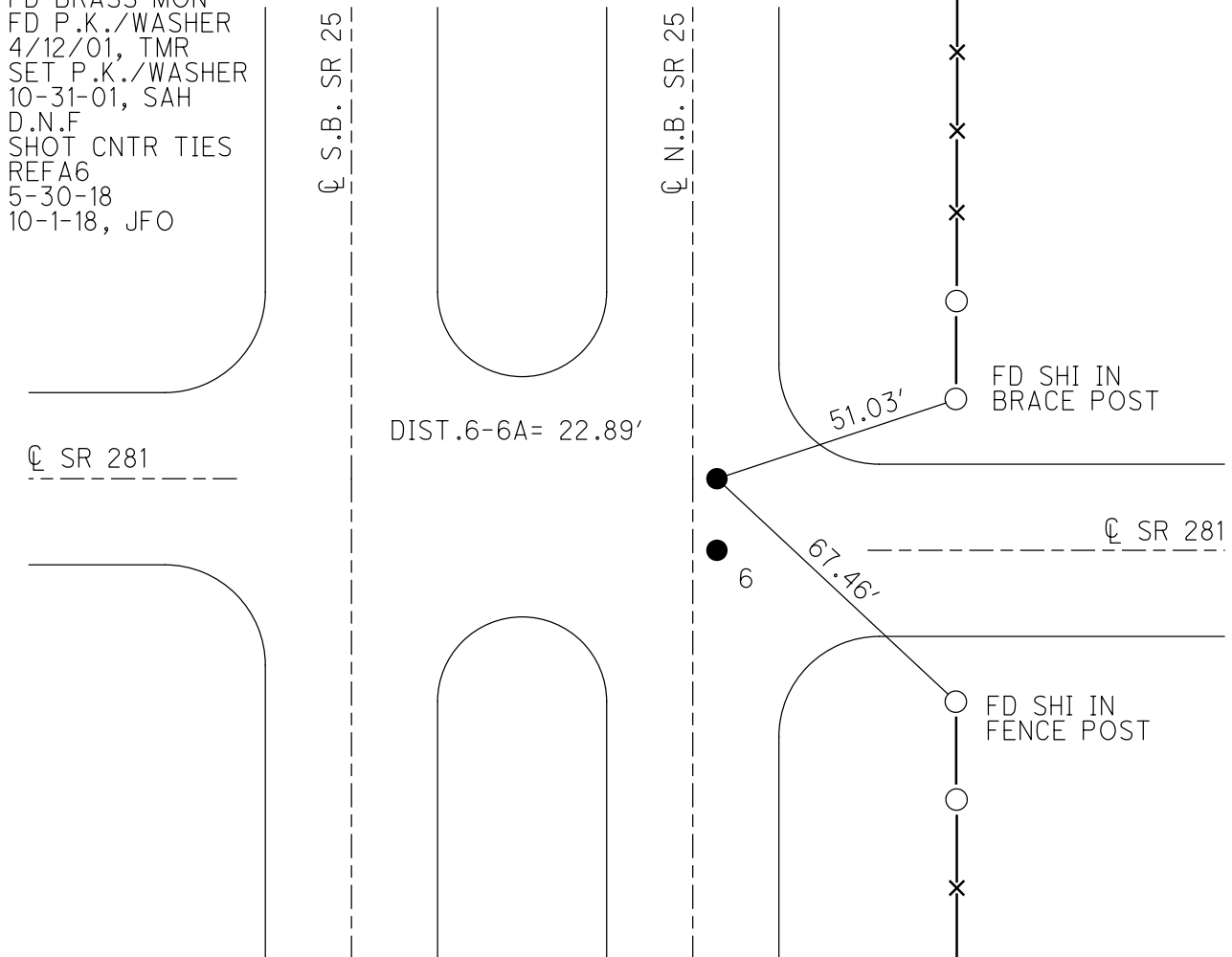
GRID: NORTHING: 590943.665

EASTING: 1652388.927



RECORD:
 STA. 429+61.95
 FD BRASS MON
 FD P.K./WASHER
 4/12/01, TMR
 SET P.K./WASHER
 10-31-01, SAH
 D.N.F
 SHOT CNTR TIES
 REFA6
 5-30-18
 10-1-18, JFO

NOTE: LIBERTY TWP
 S.E. COR SEC 24



\varnothing SR 281

\varnothing SR 281

6

O.D.O.T. DISTRICT 2 SURVEY OFFICE

PERSONNEL

REFERENCE NO. 6

SHEET 9 OF 23

NOTES Huss

H.C. Rousos

R.C. VanDusen

DATE 4-12-01

WEATHER Pt. Cldy. - Windy

TEMP. +72°F

ROUTE SR-25

COUNTY Wood

TOWNSHIP Liberty

SECTION 24

T 4 N R 10 E

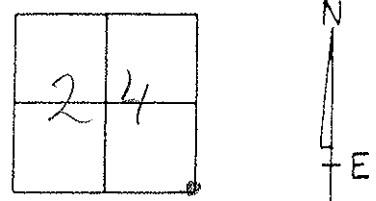
TYPE MONUMENT (A) PK/w (B) PK/w

ON SURFACE - ~~BELOW~~ Surface

PAV'T. - (RIGHT) (A) 2.2' (B) 2.2'

TO EDGE PAVEMENT

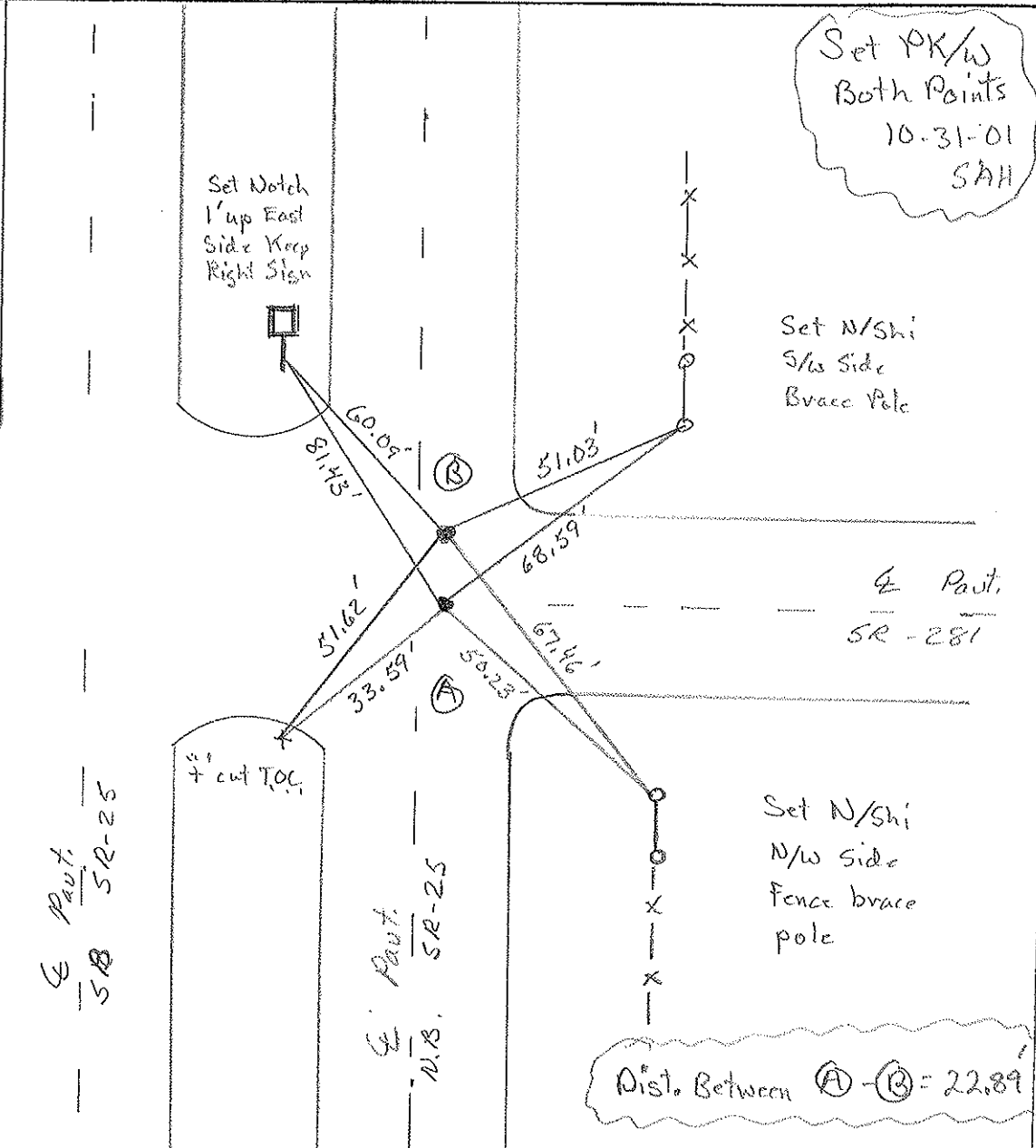
S.L.M. (A) 187+06 (B) 187+29



Record:
 (A) Portage Twp
 N.W. Cor. Sec. 30
 Brass Mon.
 Sta 429+39.2
 (B) Liberty Twp.
 S.E. Cor Sec 24
 Brass Mon.
 429+61.95

E Pavt.
 SR-281

E Pavt.
 SR-25



O.D.O.T. DISTRICT 2 SURVEY OFFICE

PERSONNEL

REFERENCE NO. 6

SHEET 9 OF 23

NOTES HOFFMAN

H.C. LOEHRKE

R.C. BARNHISEL

DATE 3-26-91

WEATHER OVERCAST

TEMP. 55'

ROUTE SR 25

COUNTY WOOD

TOWNSHIP LIBERTY

SECTION 24

T4 N R 10 E

"A" \neq "B"

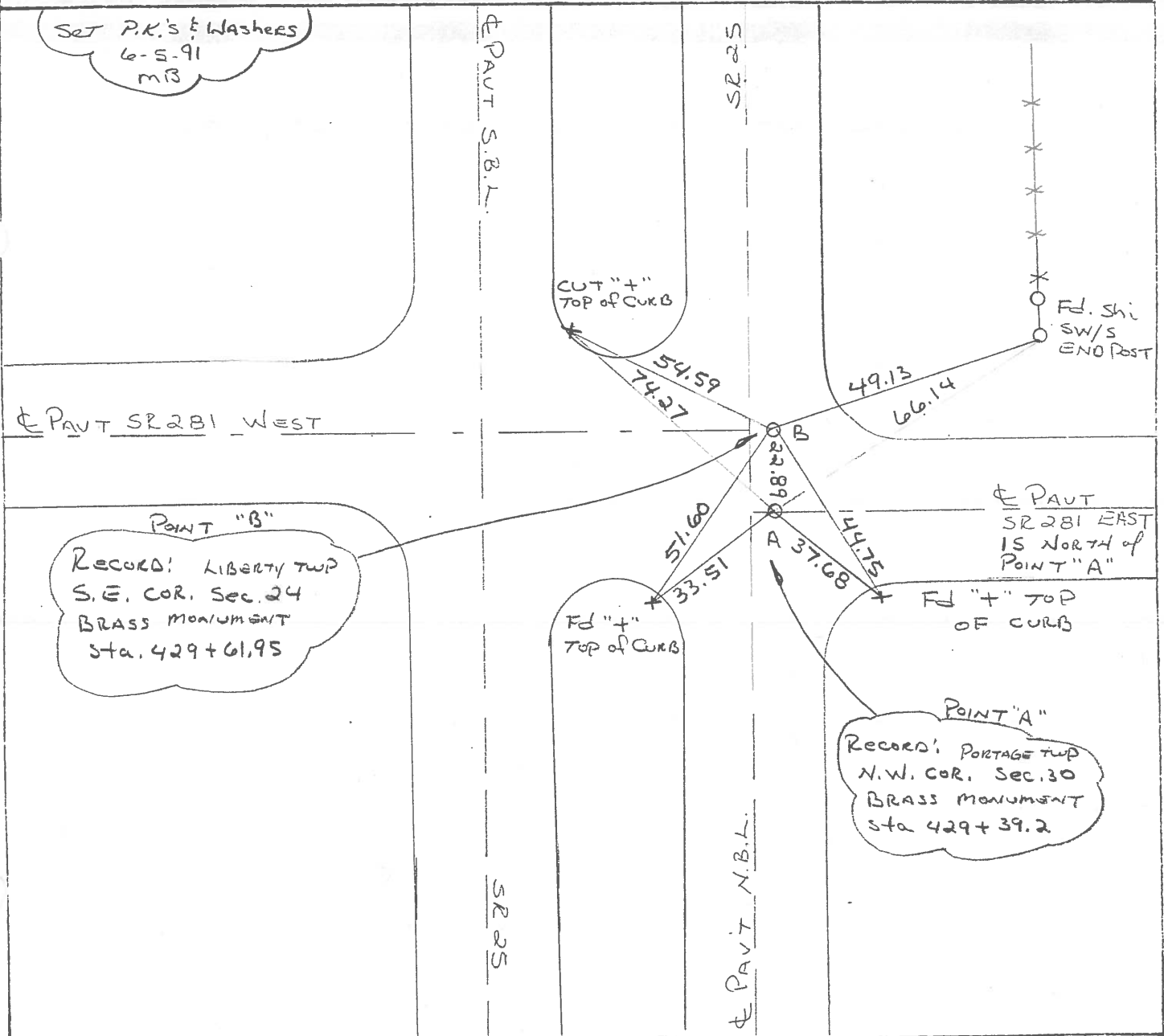
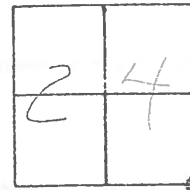
TYPE MONUMENT PK/WASHER P.K./washer

ON SURFACE - BELOW YES YES

LEFT - ~~C~~ PAVT. - RIGHT 9.3' 9.3'

TO EDGE PAVEMENT

S.L.M. PT. "A" = 187+06



County Wood S.R.-U.S. 25

Township Liberty

Section 24

T4N, R10E

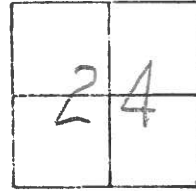
Personnel HOFFMAN
Householder

(6)

Date 6-10-81 8-25-81

Weather cloudy

Temp. +70°

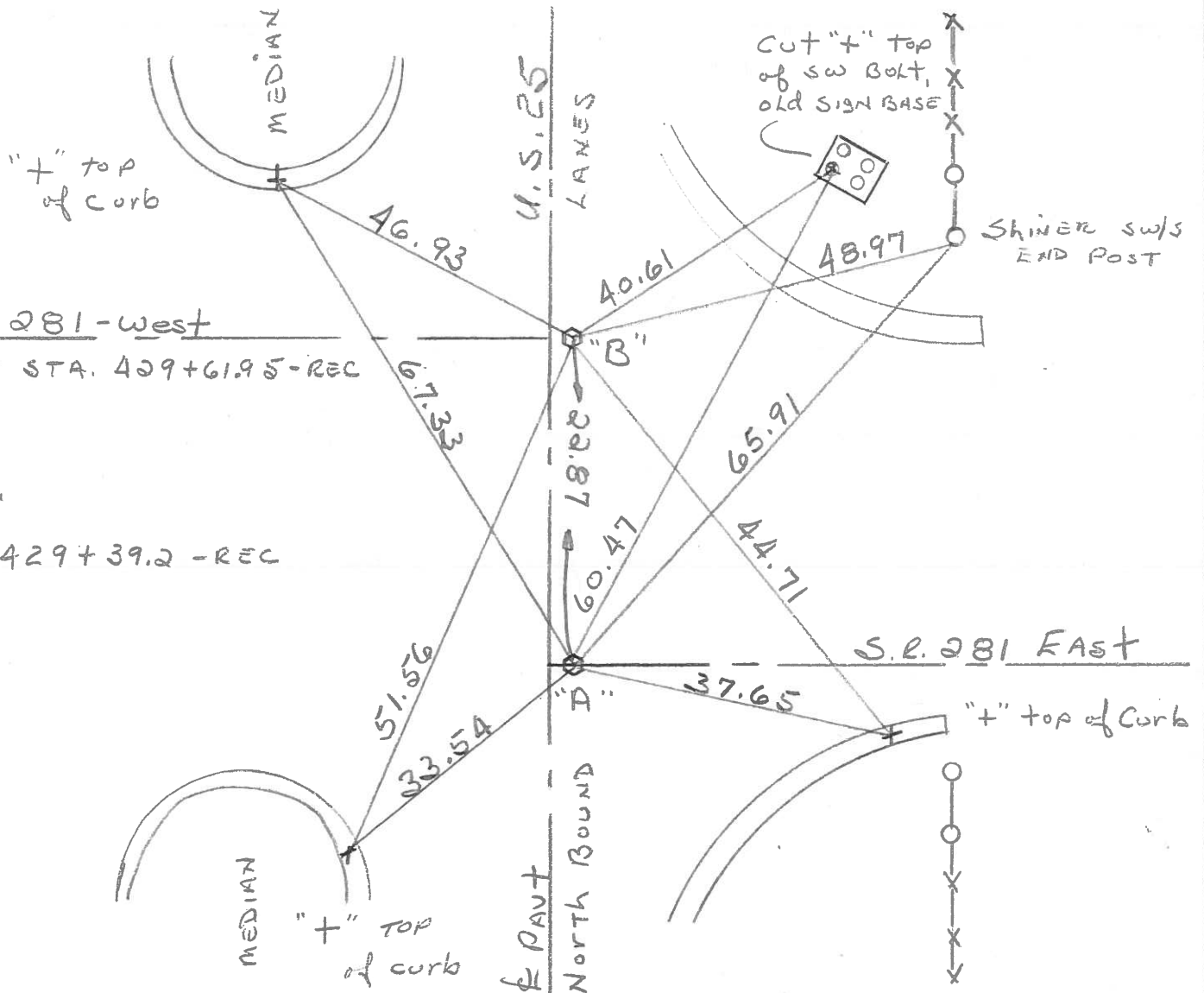


Pt. "A" Fd. BRASS MON. @ SURFACE
2.2' E. of $\frac{1}{2}$ PAVT, N.B. LANES

PROJECT STA. 187+64

Pt. "B" Fd. BRASS MON. @ SURFACE
2.2' E. of $\frac{1}{2}$ PAVT, N.B. LANES

SET PK. & WASHER @
"A" & "B"



County WOOD ^{U.S.} S.R. 25

Date 7-6-71

Township LIBERTY

Weather CLEAR

Section 24

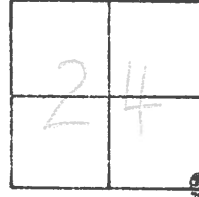
Temp. 82°

T4N, R10E

Personnel BURNSIDE

SMITH

BOWERS



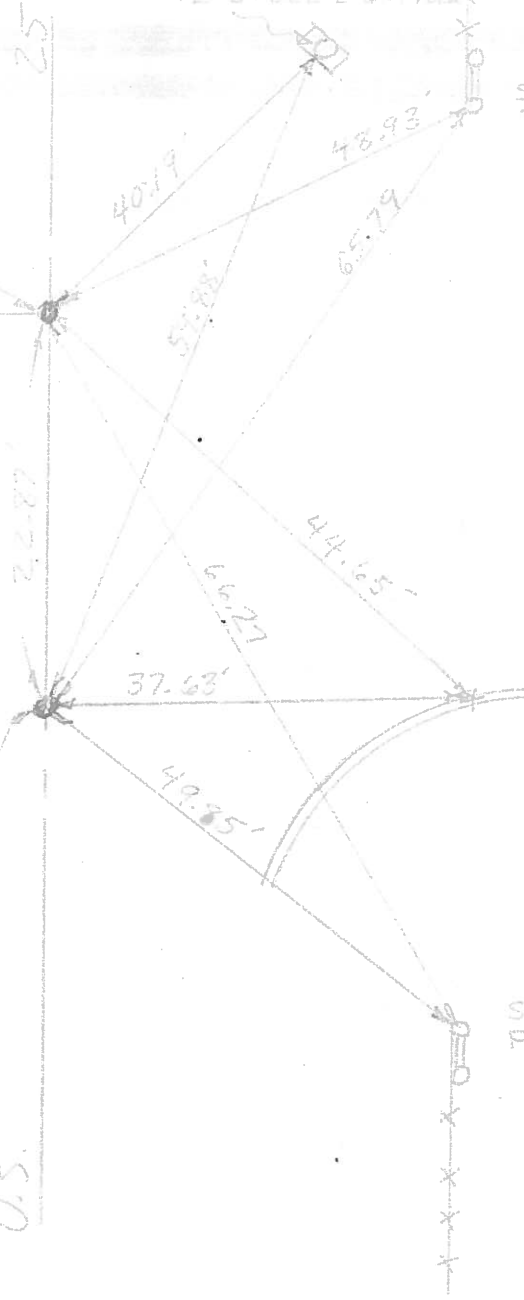
#6

~~X~~ S-E. COR. SEC. 24
 LIBERTY TWP.
 BRASS MON.
 STA. 429+61.95

NEAR EDGE
12" STEEL LIGHT

SHI. IN END
FENCE POST

S.R. 281 - WEST



N.W. COR. SEC. 30
 PORTAGE TWP.
 BRASS MON.
 STA. 429+39.2

SHI. IN END
FENCE POST

PERSONNEL _____ TITLE _____ PERSONNEL _____ TITLE _____
 COUNTY Wood DATE 4-5-60
 S. R. U.S. #25 WEATHER _____
 SEC. _____ TEMP. _____

DESCRIPTION _____ LEFT _____ CENTER LINE _____ RIGHT _____ JOB NO. _____

DESCRIPTION	LEFT	CENTER LINE	RIGHT	JOB NO.
22.84 South of Point #234 Sta. 429+39.2 N.W. cor. sec. 30. Portage Twp. Brass plate in & Pavement. <u>S.R.#281</u>			Shiner in End Post N.E. 64.73 Shiner in P.P. W.S.W. 41.29 Shiner in T.P. N.E. 67.20 66.92 X on E. pt. Hdwl. N.W. 63.88 Conc. F/W mon. S.E. 53.10 52.90 Shiner in End Post S.E. 49.77 Shiner in Twin T. Pole S.S.E. 91.81	
(6-A) (6)	#233			
Sta. 429+61.95 S.E. cor. sec. 24 Liberty Twp. Brass plate & of pavement. ok 12-9-57 <u>S.R.#281</u>	22.84 North #233		Shiner in t.p. N.E. 50.34 Shiner in P.P. S.W. 49.35 X on E. pt. Hdwl. W.N.W. 51.20 Conc. F/W mon. S.E. 70.20 69.81 Shiner in End Post S.E. 66.15 Shiner in End Post N.E. 48.18	
(6) (6-A)	#234			
Sta. 455+74.5 E. 1/4 post sec. 24 Liberty Twp. Brass plug, top of plate gone			Shiner in T.P. S.S.E. 79.2 81.4 Shiner in T.P. 79.20 N.N.E. 77.3 Shiner in P.P. W.N.W. 38.0 W. edge part. 5.9 E. edge part. 14.6 51.89 Shiner in End Post N.N.E. 52.0 Shiner in End Post N.E. 40.70 40.63	
(7)	#235			
Sta. 482+71.65 S.E. cor. sec. 13 Liberty Twp. Mill Rd. Brass plate in & part.			Shiner in P.P. N.W. 55.2 Shiner in P.P. E.N.E. 73.2 S.E. cor. brick chimney of gas station N.W. 101.1 Shiner 10' ^{walnut} Ash N.N.W. 68.36 Shiner T. Pole S.E. 49.66	
(8)	#236			