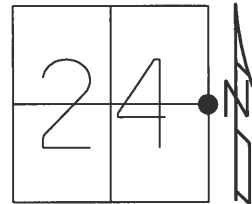


O.D.O.T. DISTRICT 2 SURVEY OFFICE (USE ONLY)

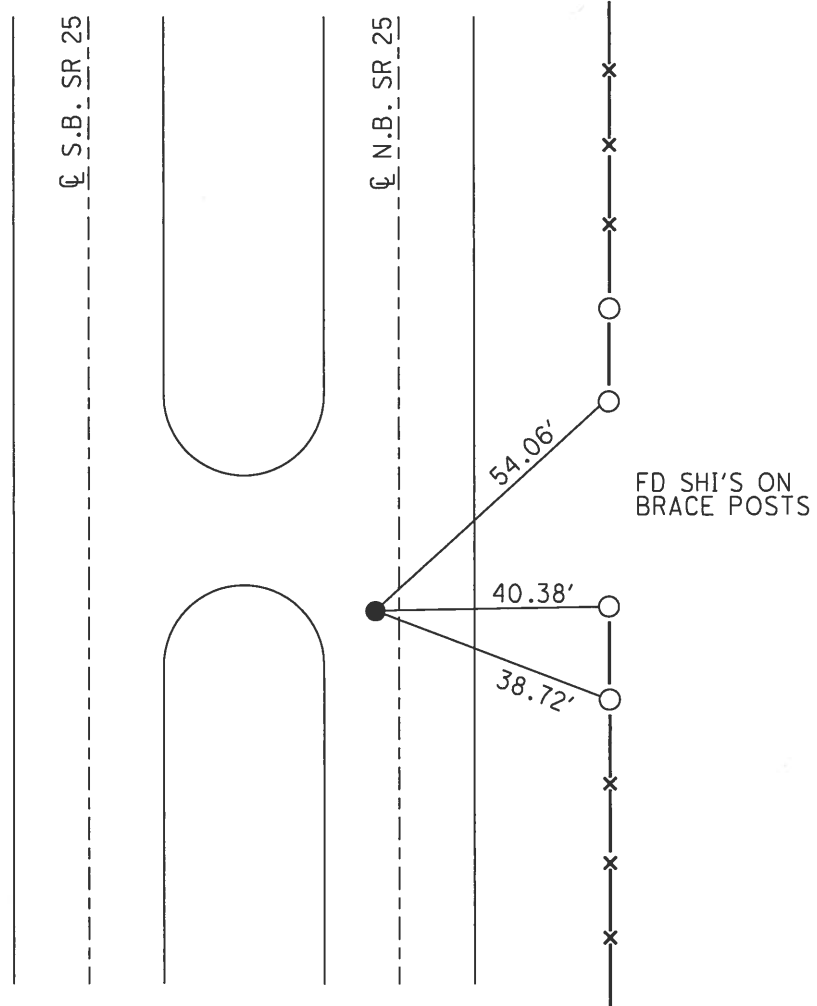
PERSONNEL \_\_\_\_\_ REFERENCE NO. 7 SHEET 17 OF 36  
 NOTES RHOADES DATE 5/30/18 ROUTE SR 25  
 H.C. O'DONNELL WEATHER CLOUDY/WINDY COUNTY WOOD  
 R.C. TRENKA TEMP. 77° TOWNSHIP LIBERTY  
 SECTION 24  
 DWG BY MILLER PID NO PID T 4 N R 10 E

TYPE MONUMENT MAG NAIL  
 ON SURFACE - ~~BELOW~~ ON  
 OFFSET Q PAVEMENT 2.4' LT : ~~RT~~  
9.2' TO LT EDGE PAVEMENT  
 STATION: 213+38



HORZ. DATUM: NAD83(2011) GEOID: NAVD88 2012A  
 GRID: NORTHING: 593555.616 EASTING: 1652405.026

RECORD:  
 STA. 466+74.5  
 FD BRASS MON  
 FD P.K./WASHER  
 4/12/01, TMR  
 SET P.K./WASHER  
 10-31-01, SAH  
 FD HOLE  
 REF 7  
 5-30-18, JFO  
 FD MAG NAIL  
 SET BY OTHERS  
 NEWREF 7  
 10-1-18, JFO



# O.D.O.T. DISTRICT 2 SURVEY OFFICE

PERSONNEL \_\_\_\_\_

REFERENCE NO. 7

SHEET 10 OF 23

NOTES Huss

H.C. Rousos

R.C. Dan Dugan

DATE 4-12-01

WEATHER Pt. Cldy. Windy

TEMP. 72°F

ROUTE SR 25

COUNTY Wood

TOWNSHIP Liberty

SECTION 24

T 4 N R 10 E

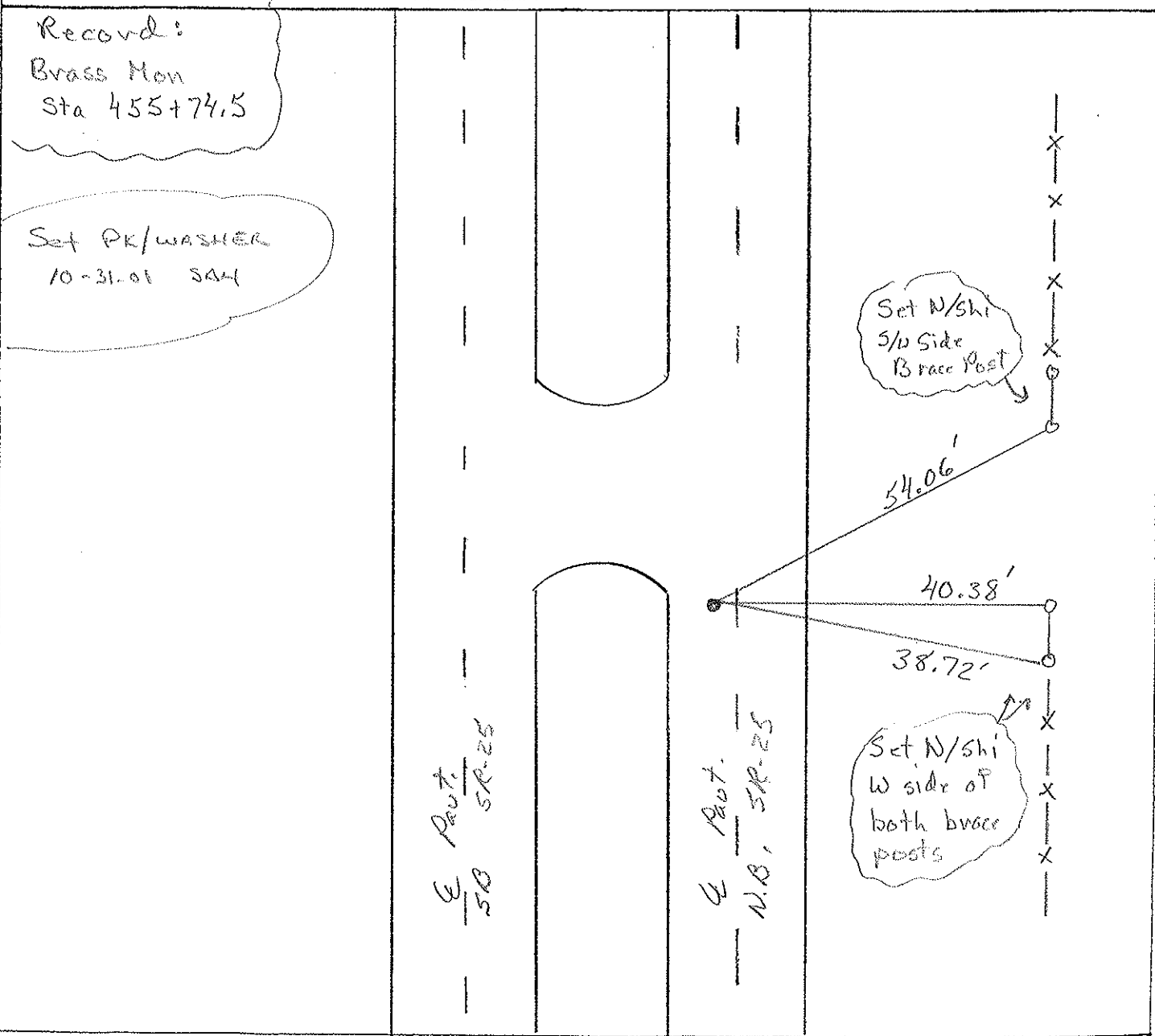
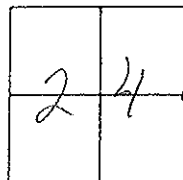
TYPE MONUMENT PK/w

ON SURFACE - ~~BELOW~~ Surface

LEFT - E PAV'T - ~~RIGHT~~ 2.4' Lt.

9.2' TO LT. EDGE PAVEMENT

S.L.M. 213+38



# O.D.O.T. DISTRICT 2 SURVEY OFFICE

PERSONNEL

REFERENCE NO. 7

SHEET 10 OF 23

NOTES HOFFMAN

H.C. LOEHRKE

R.C. BARNHISEL

DATE 3-26-91

WEATHER OVERCAST

TEMP. 55°

ROUTE SR 25

COUNTY WOOD

TOWNSHIP LIBERTY

SECTION 24

T 4 N R 10 E

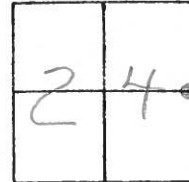
TYPE MONUMENT P.K./WASHER

ON SURFACE - BELOW YES

LEFT-C PAVT. - RIGHT 2.2'

9.2 TO LT. EDGE PAVEMENT

S.L.M. 213+38



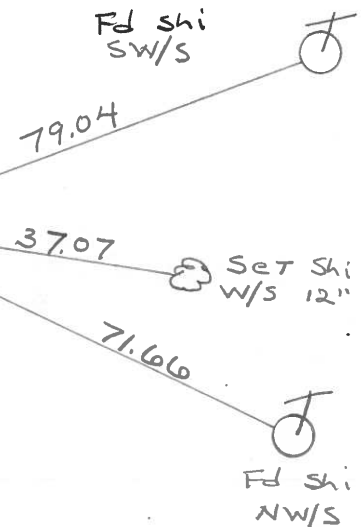
Set P.K. & Washer  
6-5-91  
MB

RECORD:  
BRASS  
MON. Sta. 455+74.5

PAVT S.B.L.

SR 25

Fd 11" Top  
N. SIDE of  
C.B.



SR 25

PAVT N.B.L.

County Wood S.R. - U.S. 25

Date 6-10-81

Township Liberty

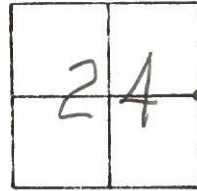
Weather Cloudy

Section 24

Temp. +70°

T4N, R10E

Personnel Hoffman  
Householder



# 7

Fd. BRASS MON. @ SURFACE  
2.3' W. OF C. of N.B. LANES  
14.3' TO E. Edge PAVT.

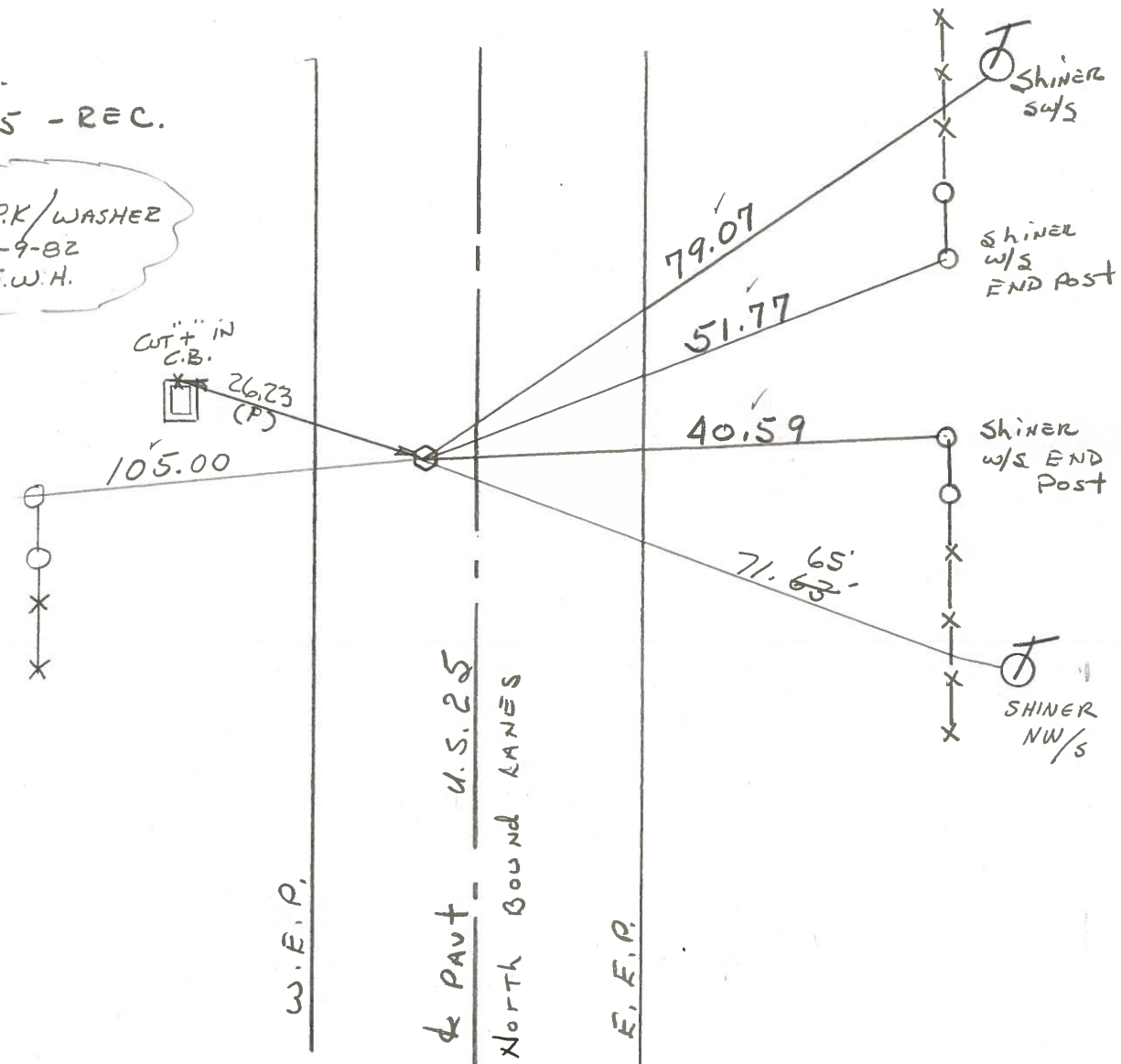
S.L.M.  
214+07

MON. STA.  
455+74.5 - REC.

SET P.K./WASHER  
11-9-82  
S.W.H.

CUT IN  
C.B.  
26.23  
(P)

SHINER  
SET TOP OF  
BRACE POLE



O.D.O.T. DISTRICT 2 SURVEY OFFICE

SHEET OF

County WOOD <sup>U.S.</sup> S.R. 25

Date 7-6-71

Township LIBERTY

Weather CLEAR

Section 24

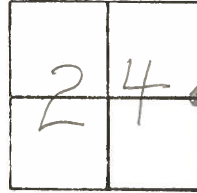
Temp. 83°

T4N, R10E

Personnel BURNSIDE

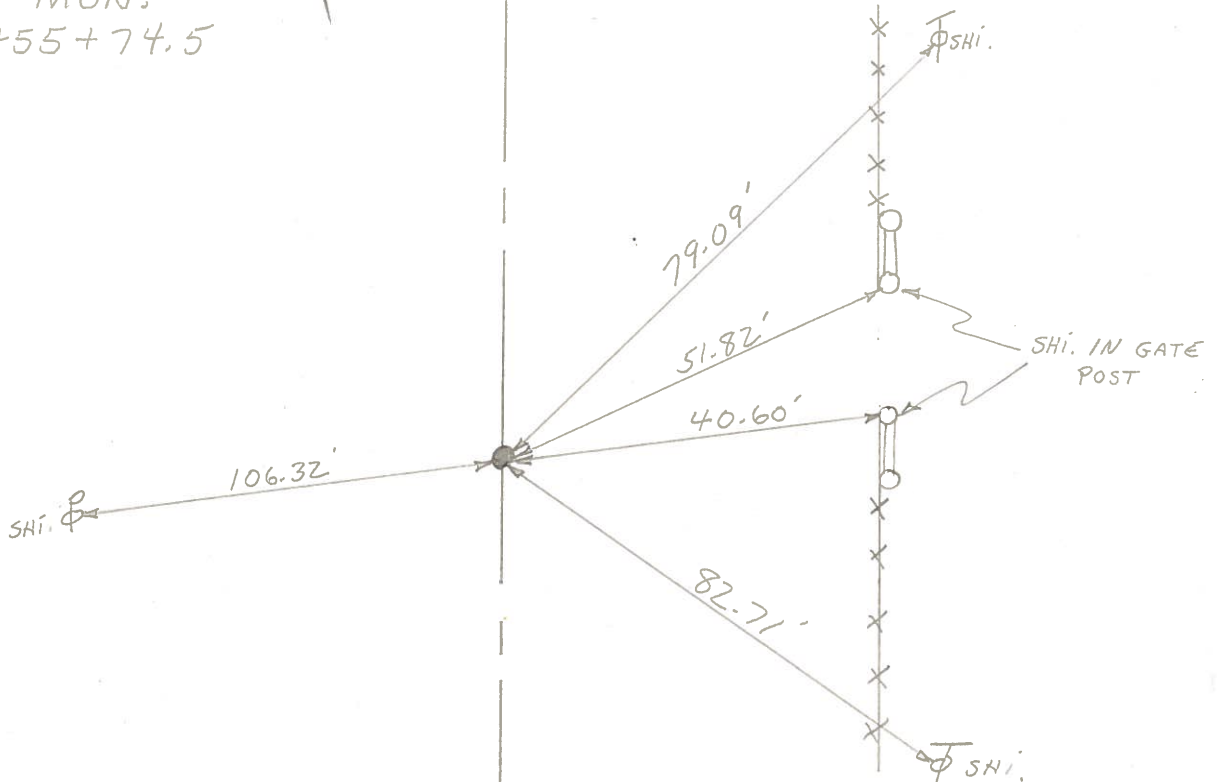
SMITH

BOWERS



#7

BRASS MON.  
STA. 455+74.5



PERSONNEL TITLE PERSONNEL TITLE

COUNTY Wood DATE 4-5-60

S. R. U.S. #25 WEATHER

SEC. TEMP.

DESCRIPTION LEFT CENTER LINE RIGHT JOB NO.

22.84 South of Point #234			Shiner in End Post N.E.	64.75
Sta. 429+39.2			Shiner in P.P. W.S.W.	41.25
N.W. cor. sec. 30. Pr tag			Shiner in T.P. N.E. 67.20	66.95
Twp.			X on E. pt. Hdwl N.W.	63.85
Brass plate in &			Conc. F/w mon. S.E. 53.10	52.90
Pavement. S.R.#281			Shiner in End Post S.E.	49.75
<del>(6A)</del>	#233		Shiner in Twin T. Pole S.S.E.	91.81

(6)				
Sta. 429+61.95	22.84 North #233		Shiner in t.P. N.E.	50.34
S.E. cor. sec. 24 Liberty			Shiner in P.P. S.W.	49.35
Twp.			X on E. pt. Hdwl. W.N.W.	51.20
Brass plate & of pavement.			conc. F/w mon. S.E. 70.20	69.85
ok 12-9-57 S.R.#281	#234		Shiner in End Post S.E.	66.15
(6A)			Shiner in End Post N.E.	48.18

(6A)				
Sta. 455+74.5			Shiner in T.P. S.S.E.	79.20
E. 1/4 post sec. 24 Liberty			Shiner in T.P. 79.20 N.N.E.	81.40
Twp.			Shiner in P.P. W.N.W.	77.30
Brass plug, top of			W. edge part. 5.9 E. edge part. 14.1	38.00
plate gone			Shiner in End Post N.N.E.	51.89
(7)	#235		Shiner in End Post N.E.	52.00
				40.70
				40.65

Sta. 482+71.65			Shiner in P.P. N.W.	55.20
S.E. cor. sec. 13 Liberty			Shiner in P.P. E.N.E.	73.20
Twp. MERMILL RD.			S.E. cor. brick chimney of gas	
Brass plate in & part.			walnut station N.W. 101.1	
(8)	#236		Shiner 10' Ash N.N.W.	68.30
			Shiner T. Pole S.E.	49.60