

O.D.O.T. DISTRICT 2 SURVEY OFFICE (USE ONLY)

PERSONNEL \_\_\_\_\_

REFERENCE NO. 8

SHEET 18 OF 36

NOTES HUSS

DATE 4/12/01

ROUTE SR 25

H.C. ROUSOS

WEATHER CLOUDY/WINDY

COUNTY WOOD

R.C. VAN DUSEN

TEMP. 72°

TOWNSHIP LIBERTY

SECTION 13

DWG BY MILLER

PID NO PID

T 4 N R 10 E

TYPE MONUMENT \_\_\_\_\_ PK/WASHER \_\_\_\_\_

ON SURFACE - ~~BELOW~~ ON \_\_\_\_\_

OFFSET  $\varnothing$  PAVEMENT 1.4' ~~ET~~ : RT

9.2' TO RT EDGE PAVEMENT

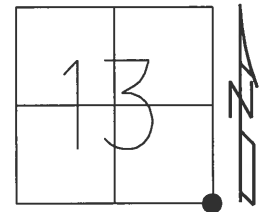
STATION: 140+35

HORZ.DATUM: \_\_\_\_\_

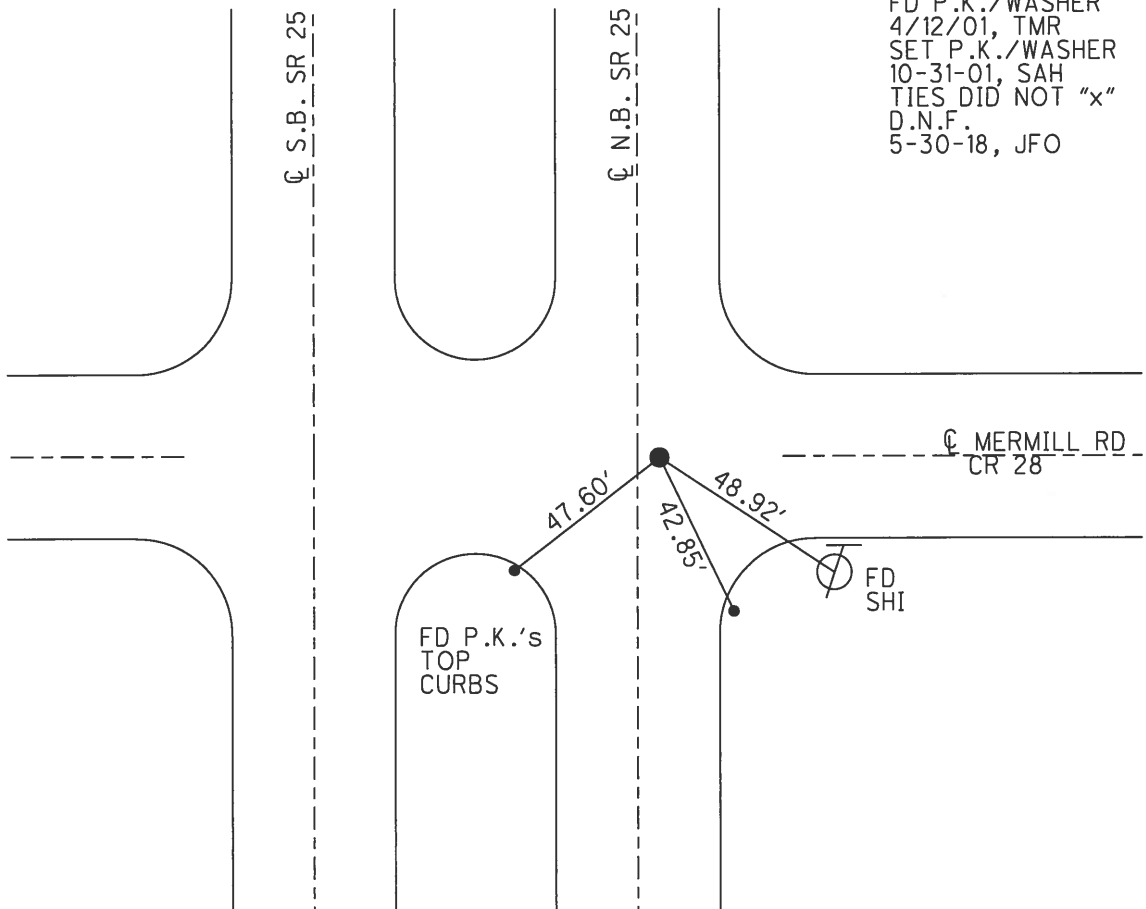
GEOID: \_\_\_\_\_

GRID: NORTHING: \_\_\_\_\_

EASTING: \_\_\_\_\_



RECORD:  
 STA. 482+71.65  
 FD BRASS MON  
 FD P.K./WASHER  
 4/12/01, TMR  
 SET P.K./WASHER  
 10-31-01, SAH  
 TIES DID NOT "x"  
 D.N.F.  
 5-30-18, JFO



# O.D.O.T. DISTRICT 2 SURVEY OFFICE

PERSONNEL

REFERENCE NO. 8

SHEET 11 OF 23

NOTES Huss

H.C. Rousas

R.C. VanDusen

DATE 4-12-01

WEATHER Pt Cldy-Windy

TEMP. 72°F

ROUTE SR-25

COUNTY Wood

TOWNSHIP Liberty

SECTION 13

T 4 N R 10 E

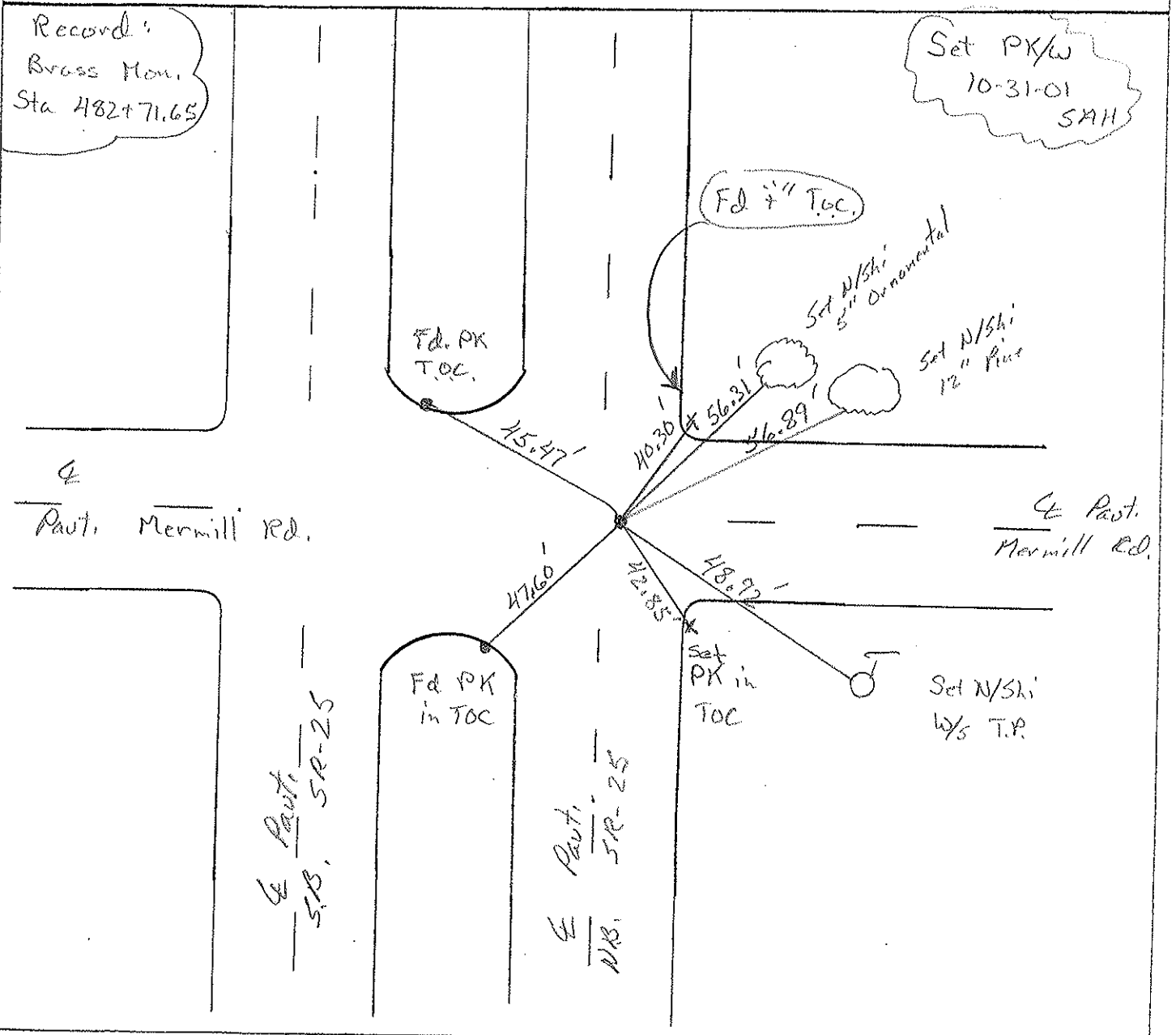
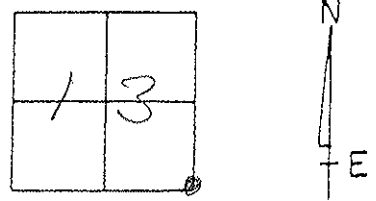
TYPE MONUMENT PK/w

~~ON SURFACE~~ - ~~BELOW~~ Surface

~~LEFT~~ - ~~PAV'T.~~ - RIGHT 104' Rt.

9.2 TO RT. EDGE PAVEMENT

S.L.M. 240+35



# O.D.O.T. DISTRICT 2 SURVEY OFFICE

PERSONNEL

REFERENCE NO. 8

SHEET 11 OF 23

NOTES HOFFMAN

H.C. LOHRKE

R.C. BARANISEL

DATE 3-26-91

WEATHER OVERCAST

TEMP. 55°

ROUTE SR 25

COUNTY WOOD

TOWNSHIP LIBERTY

SECTION 13

T 4 N R 10 E

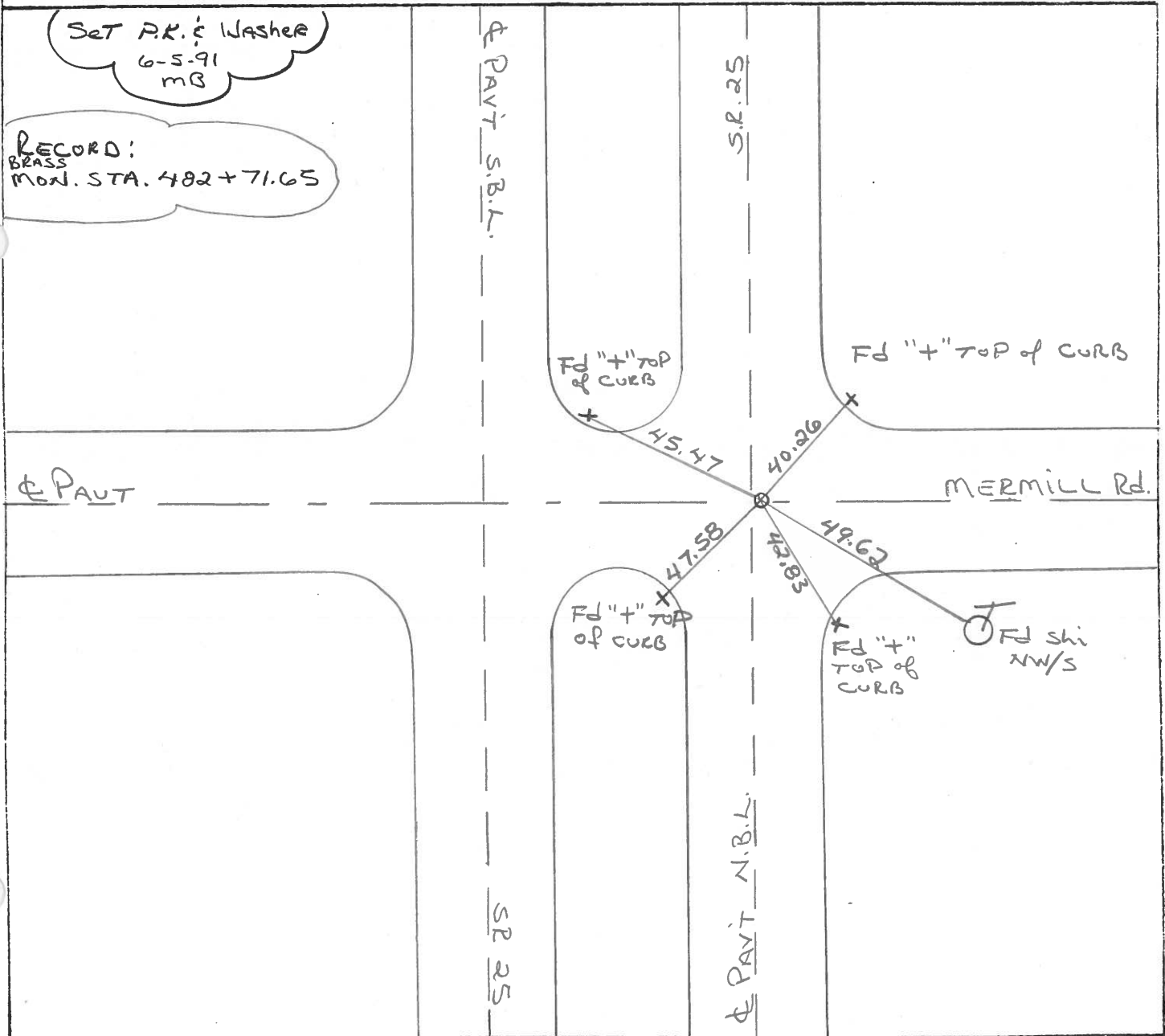
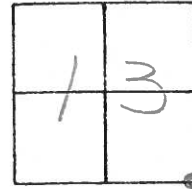
TYPE MONUMENT P.K. / WASHER

ON SURFACE - ~~BELOW~~ YES

LEFT - ~~C~~ PAV'T. - RIGHT 1.4'

9.2 TO RT EDGE PAVEMENT

S.L.M. 240 + 35



County Wood S.R. -U.S. 25

Township Liberty

Section 13

T4N, R10E

Personnel HOFFMAN  
HOUSEHOLDER

# 8

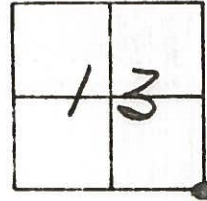
Date 6-10-81

Weather cloudy

Temp. +70°

8-5-82

+74°

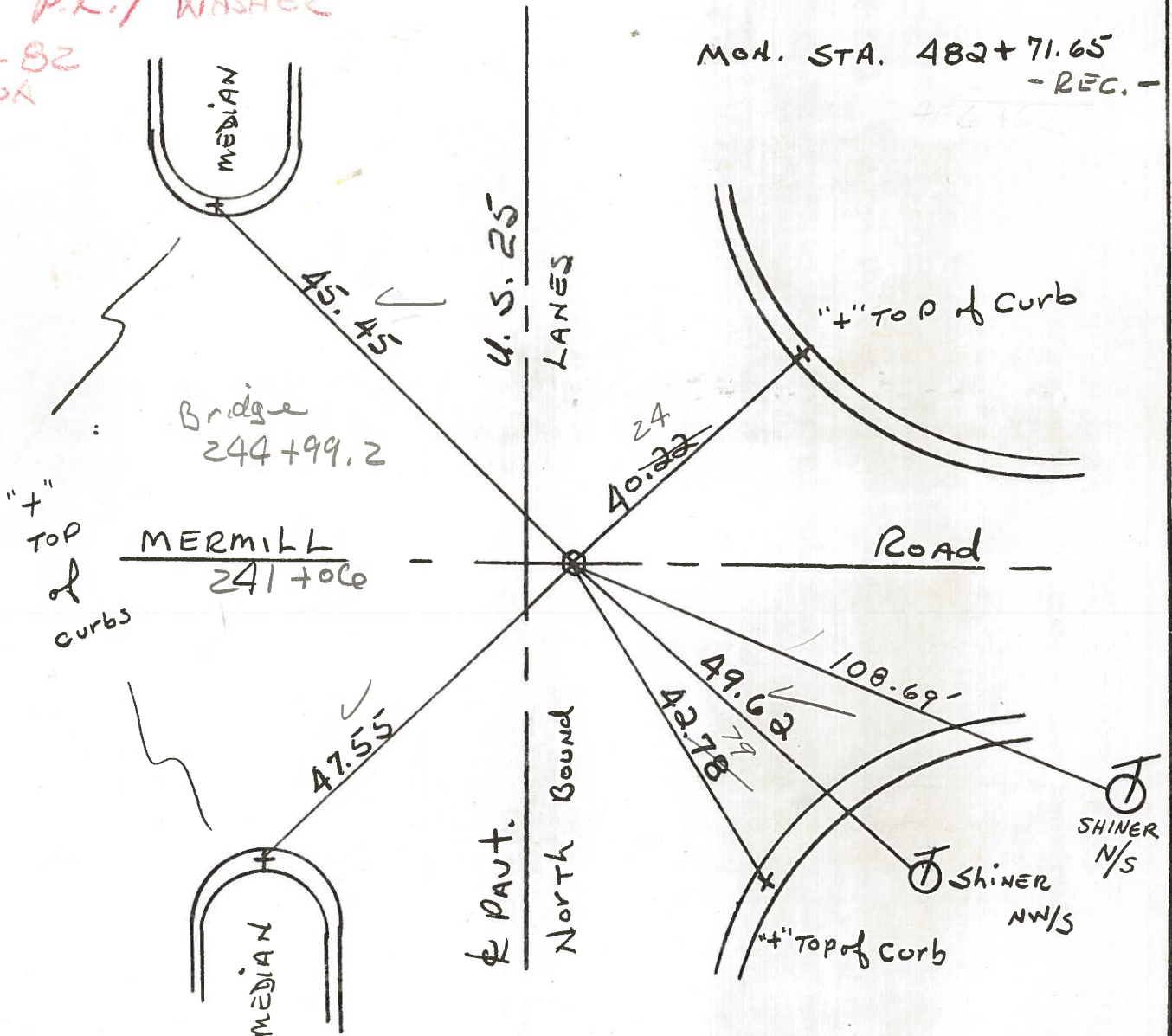


~~296~~  
~~497~~  
~~of~~  
~~Merrill~~

Fd. BRASS MON. @ SURFACE  
1.5' E. of  $\frac{1}{2}$  PAUT of N.B. LANES  
10.5' TO E. Edge PAUT.

SLM 241+00

Set P.K. / WASHER  
11-9-82  
SWA



County Wood S.R. -U.S. 25

Date 6-10-81

Township Liberty

Weather cloudy

Section 13

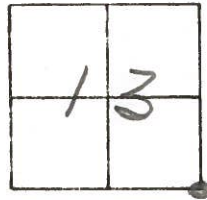
Temp. +70°

T4N, R10E

Personnel HOFFMAN

HOUSEHOLDER

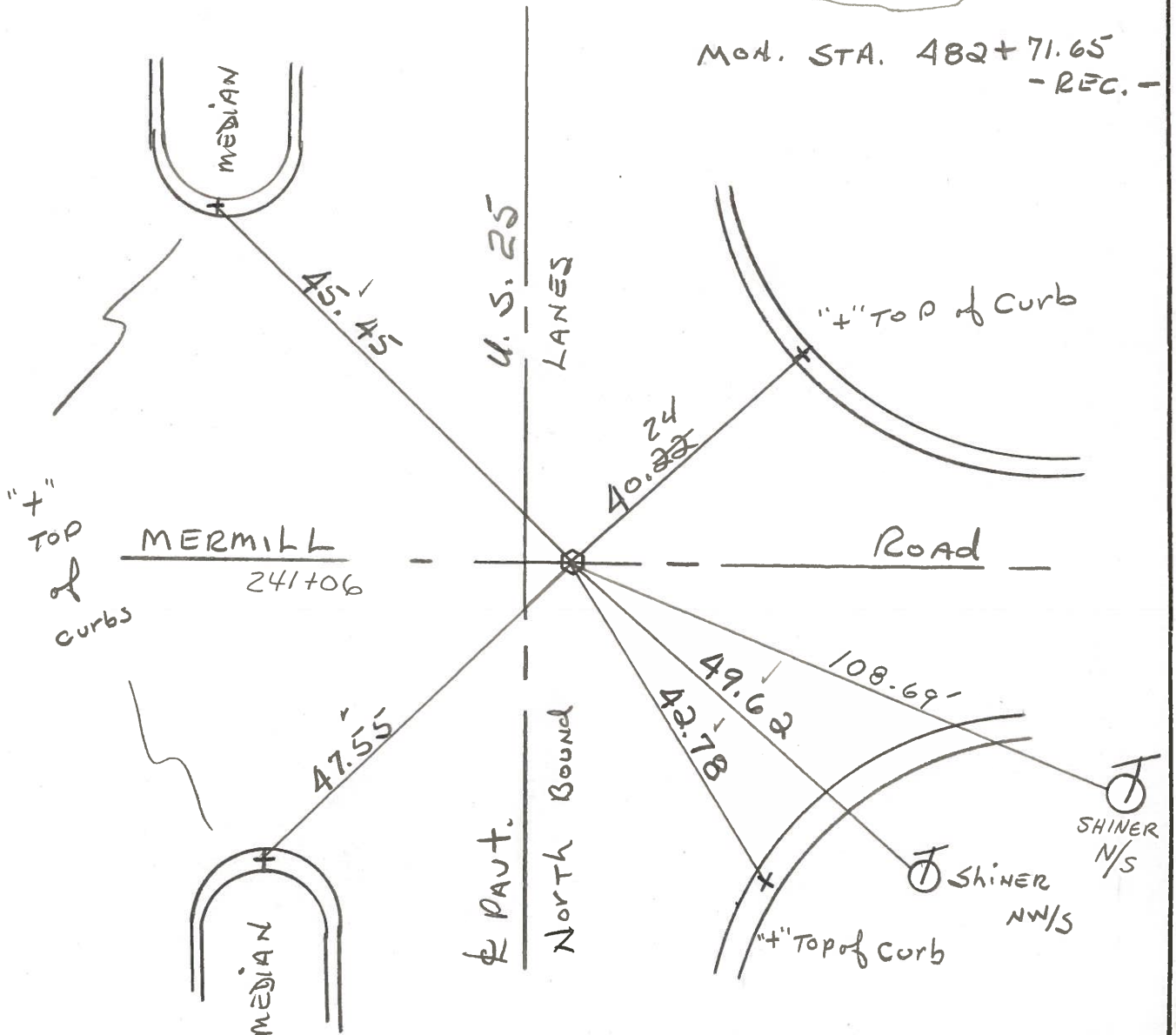
# 8



Fd. BRASS MON. @ SURFACE  
1.5' E. of  $\frac{1}{2}$  PAUT of N.B. LANES  
10.5' TO E. Edge PAUT.

SET P.K./WASHER  
11/9/82  
S.W.H.

MON. STA. 482+71.65  
-REC.-



Q.D.O.T. DISTRICT 2 SURVEY OFFICE

SHEET \_\_\_\_\_ OF \_\_\_\_\_

County WOOD <sup>U.S.</sup> S.R. 25

Date 7-6-71

Township LIBERTY

Weather CLEAR

Section 13

Temp. 82°

T4N, R10E

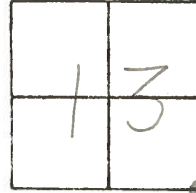
Personnel BURNSIDE

SMITH

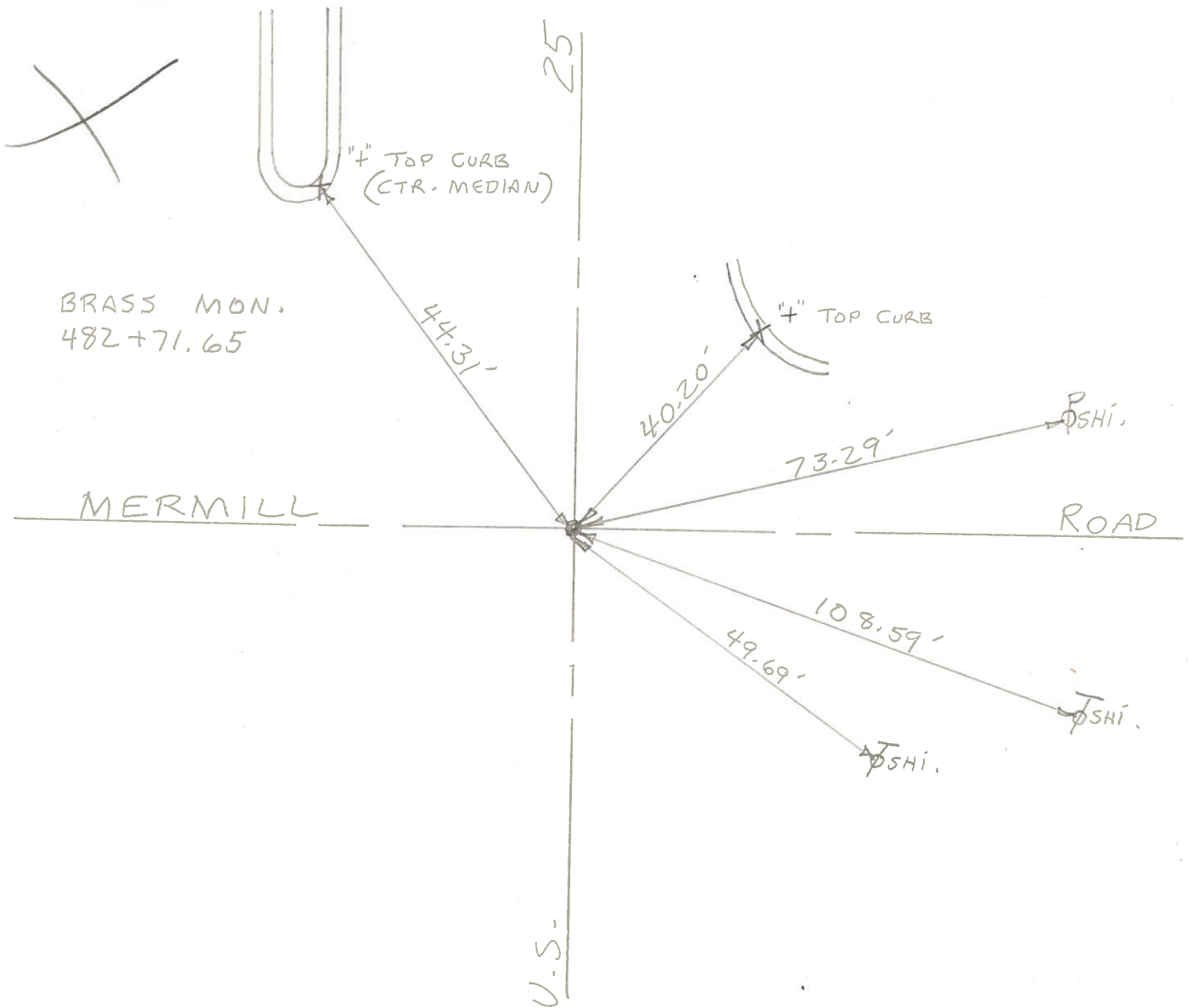
BOWERS

\_\_\_\_\_

\_\_\_\_\_



#8



PERSONNEL	TITLE	PERSONNEL	TITLE	COUNTY	DATE
				Wood	4-5-60
				S. R. U.S. #25	WEATHER
				SEC.	TEMP.

DESCRIPTION	LEFT	CENTER LINE	RIGHT	JOB NO.
22.84 South of Point #234 Sta. 429+39.2 N.W. cor. sec. 30. Portage Twp. Brass plate in & Pavement. S.R. #281			Shiner in End Post N.E. 64.73 Shiner in P.P. W.S.W. 41.24 Shiner in T.P. N.E. 67.20 <del>66.92</del> X on E. pt. Hdwl. N.W. 63.88 Conc. P/W mon. S.E. 53.10 52.90 Shiner in End Post S.E. 49.77 Shiner in Twin T. Pole S.S.E. 91.81	
<del>6-A</del> 6	#233			
22.84 North #233 Sta. 429+61.95 S.E. cor. sec. 24 Liberty Twp. Brass plate & of pavement. ok 12-9-57 S.R. #281			Shiner in t.P. N.E. 50.34 Shiner in P.P. S.W. 49.35 X on E. pt. Hdwl. W.N.W. 51.20 Conc. P/W mon. S.E. 70.20 69.80 Shiner in End Post S.E. 66.15 Shiner in End Post N.E. 48.18	
<del>6</del> 6-A	#234			
Sta. 455+74.5 E. 1/4 post sec. 24 Liberty Twp. Brass plug, top of plate gone			Shiner in T.P. S.S.E. 79.2 81.4 Shiner in T.P. 79.20 N.N.E. 77.3 Shiner in P.P. W.N.W. 38.0 Wedge part. 5.9 Edge part. 14.6 Shiner in End Post N.N.E. 51.89 52.0 Shiner in End Post N.E. 40.70 40.63	
7	#235			
Sta. 482+71.65 S.E. cor. sec. 13 Liberty Twp. M.F. Mill Rd. Brass plate in & part.			Shiner in P.P. N.W. 55.2 Shiner in P.P. E.N.E. 73.2 S.E. cor. brick chimney of gas station N.W. 101.1 Shiner 10' <sup>walnut</sup> Ash N.N.W. 68.36 Shiner T. Pole S.E. 49.66	
8	#236			