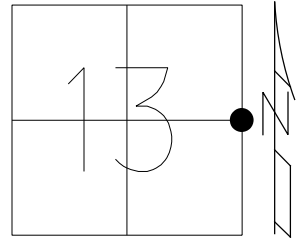


O.D.O.T. DISTRICT 2 SURVEY OFFICE (USE ONLY)

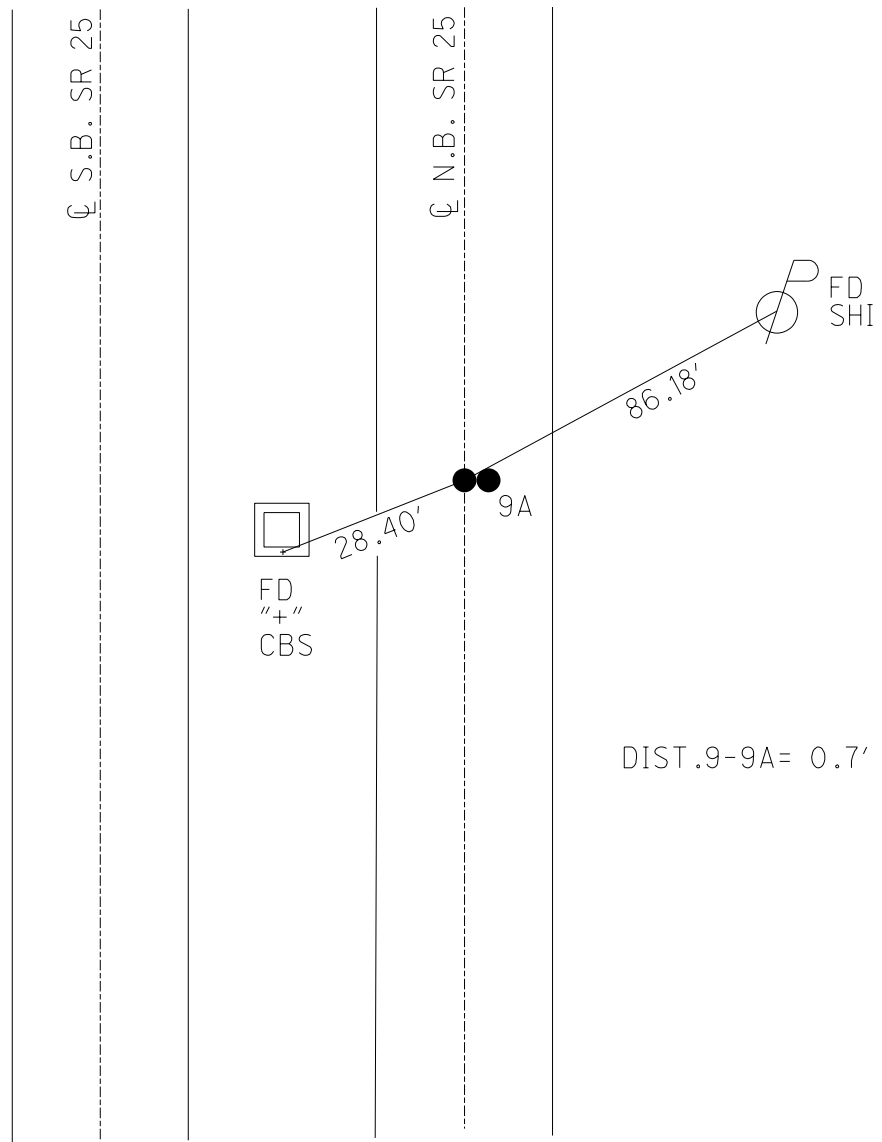
PERSONNEL _____ REFERENCE NO. 9 SHEET 19 OF 36
 NOTES RHOADES DATE 5/30/18 ROUTE SR 25
 H.C. O'DONNELL WEATHER CLOUDY COUNTY WOOD
 R.C. TRENKA TEMP. 82° TOWNSHIP LIBERTY
 _____ SECTION 13
 DWG BY NIESE PID NO PID T 4 N R 10 E

TYPE MONUMENT _____ P.K./WASHER _____
 ON SURFACE - ~~BELOW~~ ON _____
 OFFSET C PAVEMENT ON ~~LT~~ : RT
11.3' TO LT EDGE PAVEMENT
 STATION: 264+67



HORIZ.DATUM: NAD83(2011) GEOID: NAVD88 2012A
 GRID: NORTHING: 598685.850 EASTING: 1652457.455

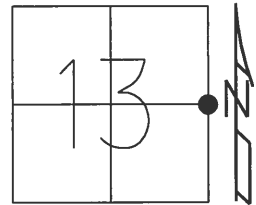
RECORD:
 STA.507+07
 FD BRASS MON
 FD P.K./WASHER
 4/12/01, TMR
 SET P.K./WASHER
 10-31-01, SAH
 FD P.K./WASHER
 (SHOT AS REFA9)
 5-30-18, JFO
 DRAWING CORRECTED
 11/16/23, TDN



SEE VERSION UPDATED ON 11/16/23

O.D.O.T. DISTRICT 2 SURVEY OFFICE (USE ONLY)

PERSONNEL _____ REFERENCE NO. 9 SHEET 19 OF 36
NOTES RHOADES DATE 5/30/18 ROUTE SR 25
H.C. O'DONNELL WEATHER CLOUDY COUNTY WOOD
R.C. TRENKA TEMP. 82° TOWNSHIP LIBERTY
SECTION 13
DWG BY MILLER PID NO PID T 4 N R 10 E
TYPE MONUMENT _____ P.K.NAIL _____
ON SURFACE - ~~BELOW~~ ON _____
OFFSET C PAVEMENT 0.3' ~~LT~~ : RT
11.3' TO LT EDGE PAVEMENT
STATION: 264+67
HORZ.DATUM: NAD83(2011) GEOID: NAVD88 2012A
GRID: NORTHING: 598685.796 EASTING: 1652458.149



RECORD:
STA.507+07
FD BRASS MON
FD P.K./WASHER
4/12/01, TMR
SET P.K./WASHER
10-31-01, SAH
FD P.K.NAIL
REF9
5-30-18, JFO

C S.B. SR 25

C N.B. SR 25

FD
"+"
CBS

29.04'

9A

85.84'

FD
SHI

DIST.9-9A= 0.7'

O.D.O.T. DISTRICT 2 SURVEY OFFICE

PERSONNEL

REFERENCE NO. 9-10

SHEET 12 OF 23

NOTES Huss

H.C. Rousos

R.C. Dan Dusen

DATE 4-12-01

WEATHER Pt Cldy-Windy

TEMP. +72°F

ROUTE SR-25

COUNTY Wood

TOWNSHIP Liberty

SECTION 13

T 4 N R 10 E

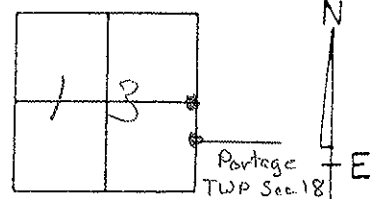
TYPE MONUMENT (A) PK/W (B) PK/W

(ON SURFACE) - ~~PK/W~~ Surface

~~PK/W~~ - (E) PAV'T. - RIGHT (A) 0.3' (B) 0.2'

11.3 TO LT EDGE PAVEMENT

S.L.M. (A) 264+67 (B) 266+92



Record:

(A) BRASS MONUMENT
Sta. 507+07.0

(B) BRASS MONUMENT
Sta. 509+31.4

Fd W/shi
E/S 14"

94.55'

Fd PK/W
in fence Post

Set PK/W
Both Points
10-31-01
SAH

Set N/shi
Brace Post

77.35'

41.65'

53.22'

Fd N/shi

224.55'

86.17'

Set N/shi
w/s P.P.

(A)

28.43'
(Rec)

83.07'

Fd 4" top
South side
C.B.

Fd Watch
2' up w/s
N.M. # 5
post

Post
SR-25
5B

Post
SR-25
A.B.

O.D.O.T. DISTRICT 2 SURVEY OFFICE

PERSONNEL

REFERENCE NO. 9 F 10

SHEET 12 OF 23

NOTES HOFFMAN

H.C. LOEHRKE

DATE 3-26-91

ROUTE SR 25

R.C. BARATHISEL

WEATHER OVERCAST

COUNTY WOOD

TEMP. 55°

TOWNSHIP LIBERTY

SECTION 13

T 4 N R 10 E

"A" "B"

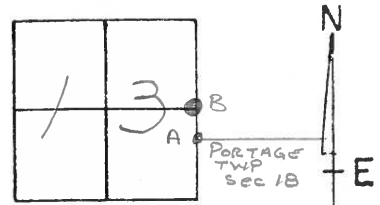
TYPE MONUMENT P.K./washer - P.K./washer

ON SURFACE - BELOW YES YES

~~LEFT - C.P.A.V.T.~~ - RIGHT 0.3 - 0.2

11.3 TO LT EDGE PAVEMENT

S.L.M. "A" = 264 + 67



Set P.K.'s & Washers
6-6-91
mB

RECORD: POINT "A"
BRASS MON. STA. 507+07.0
POINT "B"
BRASS MON. STA. 509+31.4

Set Shi
E/S 14"

94.55

53.15

224.55

85.29

28.43

83.07

Fd "t" TOP
South Side
of C.B.

CUT Notch 2' up
ON POST of Mile Marker
5

SR 25

P.A.V.T. S.B.L.

S.R. 25

P.A.V.T. N.B.L.

County Wood S.R.-U.S. 25

Township Liberty

Section 13

T4N, R10E

Personnel Hoffman

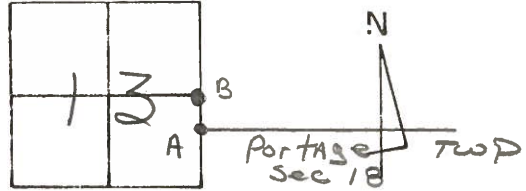
Householder

9 & 10

Date 6-10-81

Weather clear

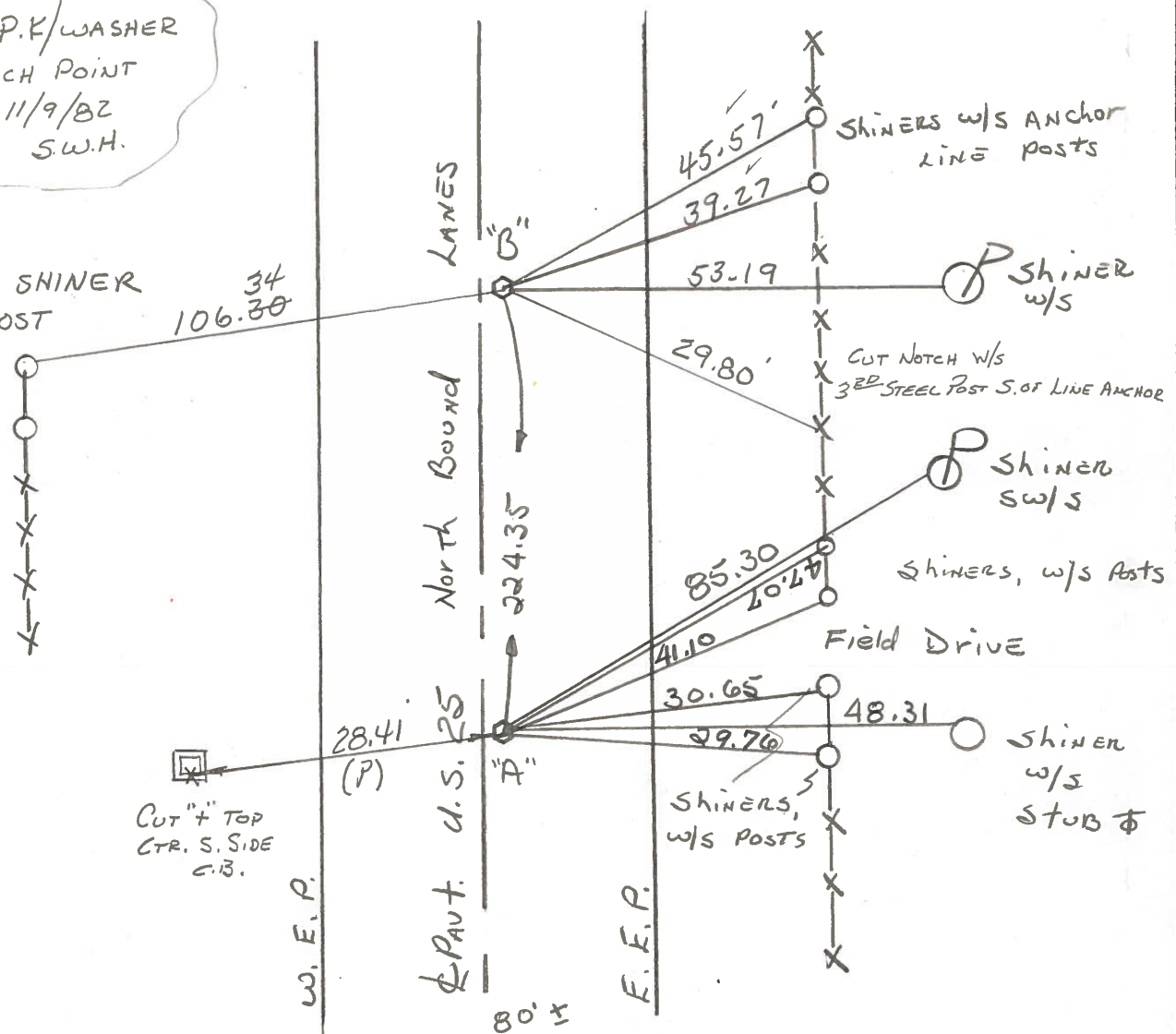
Temp. +78°



Pt. "A" Fd. BRASS MON @ SURFACE STA 507+07.0 - REC. S.L.M. 265+40
 Pt. "B" Fd. BRASS MON @ SURFACE STA 509+31.4 - REC. S.L.M. 267+64

SET P.K./WASHER @ EACH POINT 11/9/82 S.W.H.

SET NEW SHINER N/S END POST 34 106.30



WOOD 25 5 mile MARKERS

Q.D.O.T. DISTRICT 2 SURVEY OFFICE

SHEET _____ OF _____

County WOOD ^{U.S.} ~~S.R.~~ 25

Date 7-6-71

Township LIBERTY

Weather CLEAR

Section 13

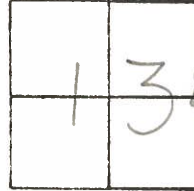
Temp. 82°

T4N, R10E

Personnel BURNSIDE

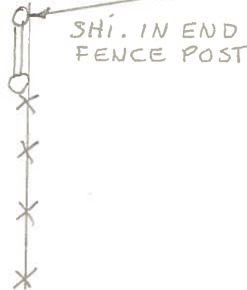
SMITH

BOWERS



9 - # 10

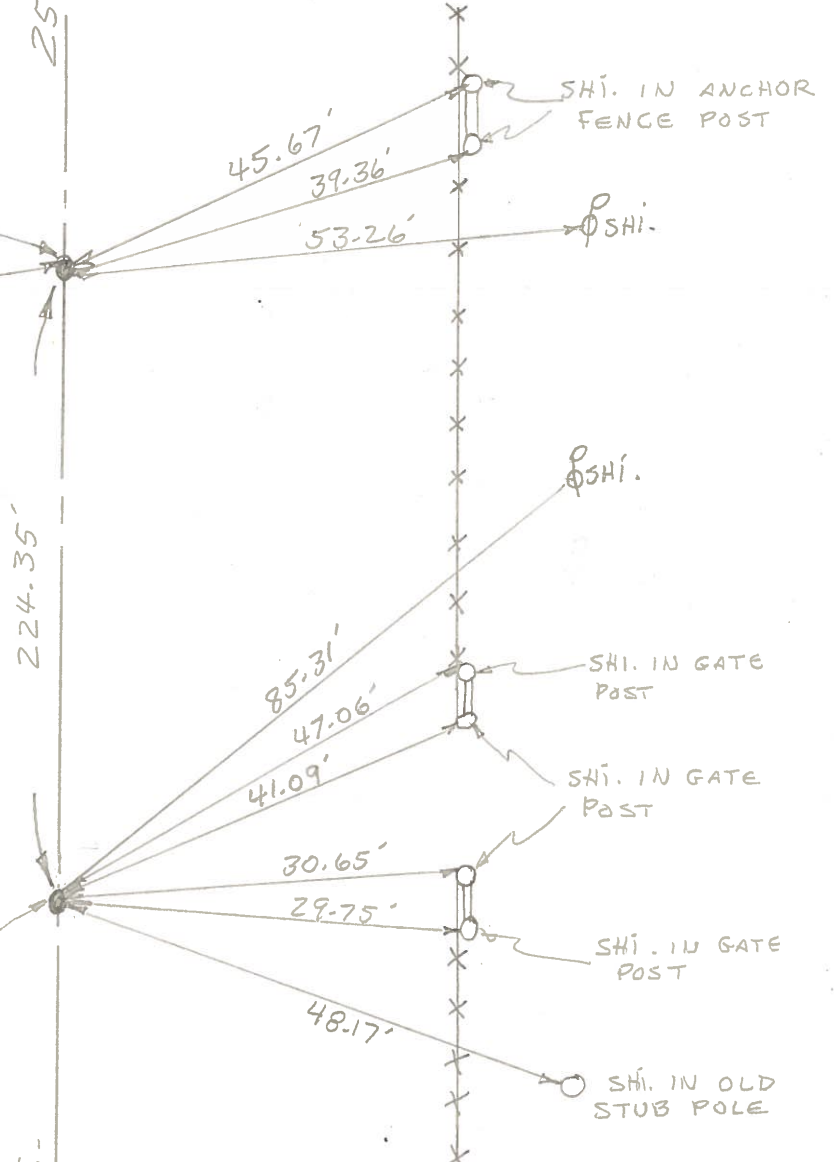
BRASS MON-
509+31.4
E 1/4 POST SEC. 13
LIBERTY TWP.



25
224.35'
U.S.-

W. 1/4 POST SEC. 18
PORTAGE TWP.
SAN. CO.

BRASS MON.
STA. 507+07.0



PERSONNEL TITLE PERSONNEL TITLE

COUNTY Wood DATE 4-5-60

S.P. U.S.#25 WEATHER

SEC. TEMP.

DESCRIPTION LEFT CENTER LINE RIGHT JOB NO.

<p>Sta. 507+07.0 W. 1/4 post sec. 18 Portage Twp. Brass plate - Could not raise Mabora Mon.</p>	<p>⑩ ⑨ #237</p>	<p>Shiner in Anchor Post N.N.E. 47.04' Shiner in T.P. W.N.W. 29.00' Shiner in P.P. N.N.E. 85.30' Shiner in 8' oak S.E. 95.76' Wedge post, 7.85 Edge 12.15 Shiner in End Post N.N.E. 41.07 Shiner in End Post N.E. 30.63 Shiner in Anchor Post E. 29.71</p>
<p>Sta. 509+31.4 E. 1/4 post sec. 13 Liberty Twp. Brass plate with top - (Could not plate gone (Raise)</p>	<p>⑩ #238</p>	<p>Shiner in T.P. N.W. 58.28' Shiner in T.P. S.S.W. 89.15' Shiner in P.P. N.E. 53.30 59.34' Iron cor. post S.W. 35.45' Wedge post, 8.55' Edge 11.35' Shiner Brace Post N.N.E. 45.75' Shiner Brace Post N.E. 39.43' "X" E. Edge S. Bound lane (West) 44.10' "X" E. Edge S. Bound lane (N. West) 54.37'</p>
<p>Sta. 533+62.85 S.W. cor. sec. 7 Portage Twp. <u>Greensburg Pike East</u> Brass plate in lot post.</p>	<p>⑪ #239</p>	<p>Shiner in T.P. E.S.E. 66.74' Shiner in P.P. S.S.E. 94.22' Shiner in T.P. W. 38.16' Shiner in End Post N.N.E. 44.74' Shiner in P. Pole N.E. 93.10 Shiner in End Post E.S.E. 50.93 Shiner in T. Pole S.E. 66.94</p>
<p>Sta. 535+91.8 S.E. cor. sec. 12 Liberty Twp. <u>Greensburg Pike West</u> Brass plate in E post.</p>	<p>⑫ #240</p>	<p>Shiner in P.P. N.N.E. 94.62' Shiner in T.P. N.W. 45.00' Shiner in T.P. W.N.W. 67.13' conc. E/W mon. S.W. 57.29' "X" in conc. curb N.W. 38.39' "X" in conc. curb S.W. 34.14'</p>