

O.D.O.T. DISTRICT 2 SURVEY OFFICE (USE ONLY)

PERSONNEL _____ REFERENCE NO. 11 SHEET 22 OF 36

NOTES RHOADES DATE 5/30/18 ROUTE SR 25
 H.C. O'DONNELL WEATHER CLOUDY COUNTY WOOD
 R.C. TRENKA TEMP. 84° TOWNSHIP LIBERTY

DWG BY MILLER PID NO PID SECTION 12
 T 4 N R 10 E

TYPE MONUMENT _____ MAG NAIL _____

ON SURFACE - ~~BELOW~~ ON _____

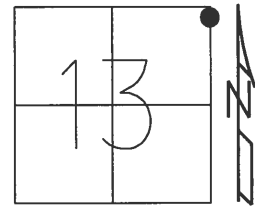
OFFSET ϕ PAVEMENT 1.4' ~~LT~~ : RT

10.0' TO RT EDGE PAVEMENT

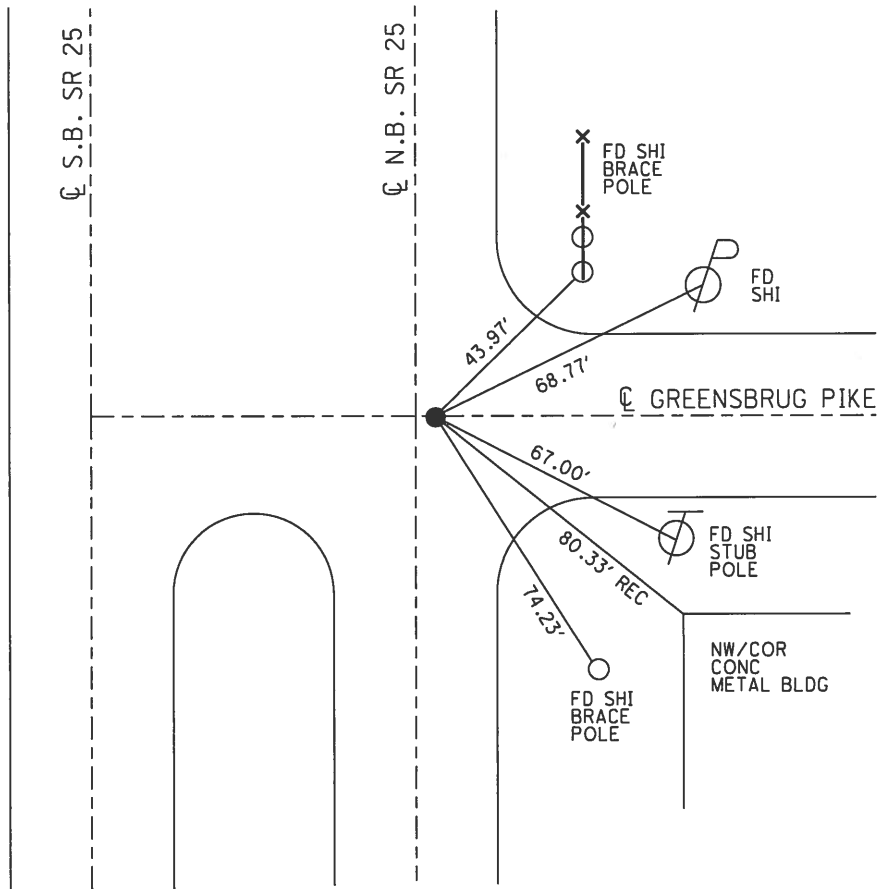
STATION: 291+20

HORZ. DATUM: NAD83(2011) GEOID: NAVD88 2012A

GRID: NORTHING: 601340.533 EASTING: 1652485.959



RECORD:
 STA. 533+62.85
 FD BRASS PLUG
 FD P.K./WASHER
 4/16/01, TMR
 SET P.K./WASHER
 10-31-01, SAH
 SET MAG NAIL
 REF11
 5-30-18, JFO
 10-1-18, JFO



O.D.O.T. DISTRICT 2 SURVEY OFFICE

PERSONNEL

REFERENCE NO. 11E12

SHEET 13 OF 23

NOTES Huss

H.C. Rousos

R.C. VanRusen

DATE 4-16-01

WEATHER Clay-Rain

TEMP. 142.0F

ROUTE SR 25

COUNTY Wood

TOWNSHIP Liberty

SECTION 12

T4N R10 E

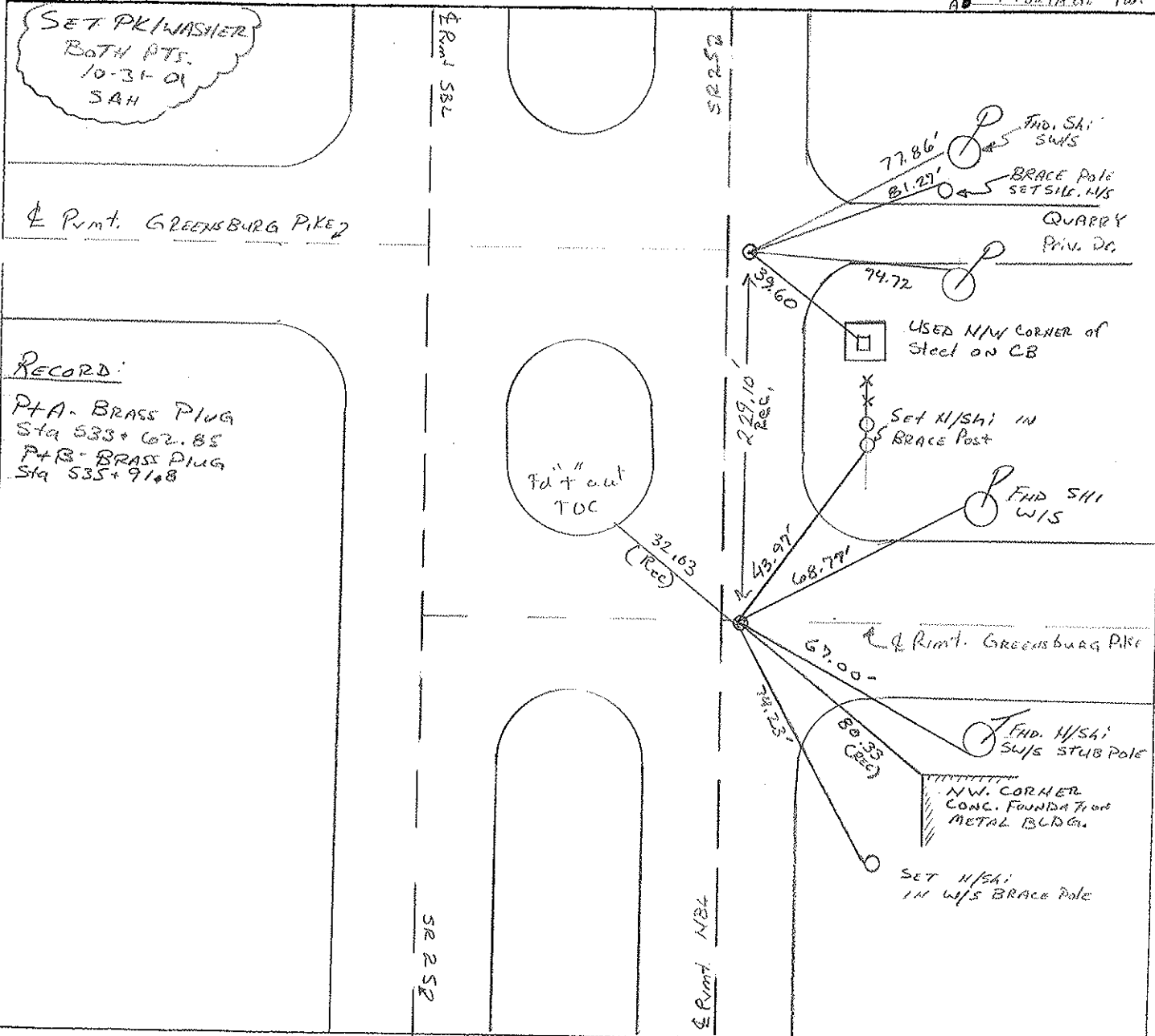
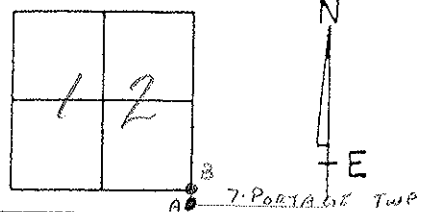
TYPE MONUMENT A-PK WASHER / B-PK WASHER

ON SURFACE - BELOW BOTH

LEFT - CL PAVT. - RIGHT A-1.4 RT / B-1.6 RT

10.0 TO RT EDGE PAVEMENT

S.L.M. A: 291+20 / B: 293+49



RECORD:
 P+A - BRASS PLUG
 Sta 535+62.85
 P+B - BRASS PLUG
 Sta 535+91.8

O.D.O.T. DISTRICT 2 SURVEY OFFICE

PERSONNEL

REFERENCE NO. 11 E 12

SHEET 13 OF 23

NOTES HOFFMAN

H.C. LOHRKE

R.C. BARNHISEL

DATE 3-26-91

WEATHER OVERCAST

TEMP. 55°

ROUTE SR 25

COUNTY WOOD

TOWNSHIP LIBERTY

SECTION 12

T4 N R 10 E

"A"

"B"

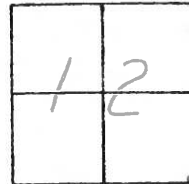
TYPE MONUMENT P.K./WASHER - P.K./WASHER

ON SURFACE - BELOW YES - YES

~~LEFT - C PAV'T. - RIGHT~~ 1.4 - 1.6

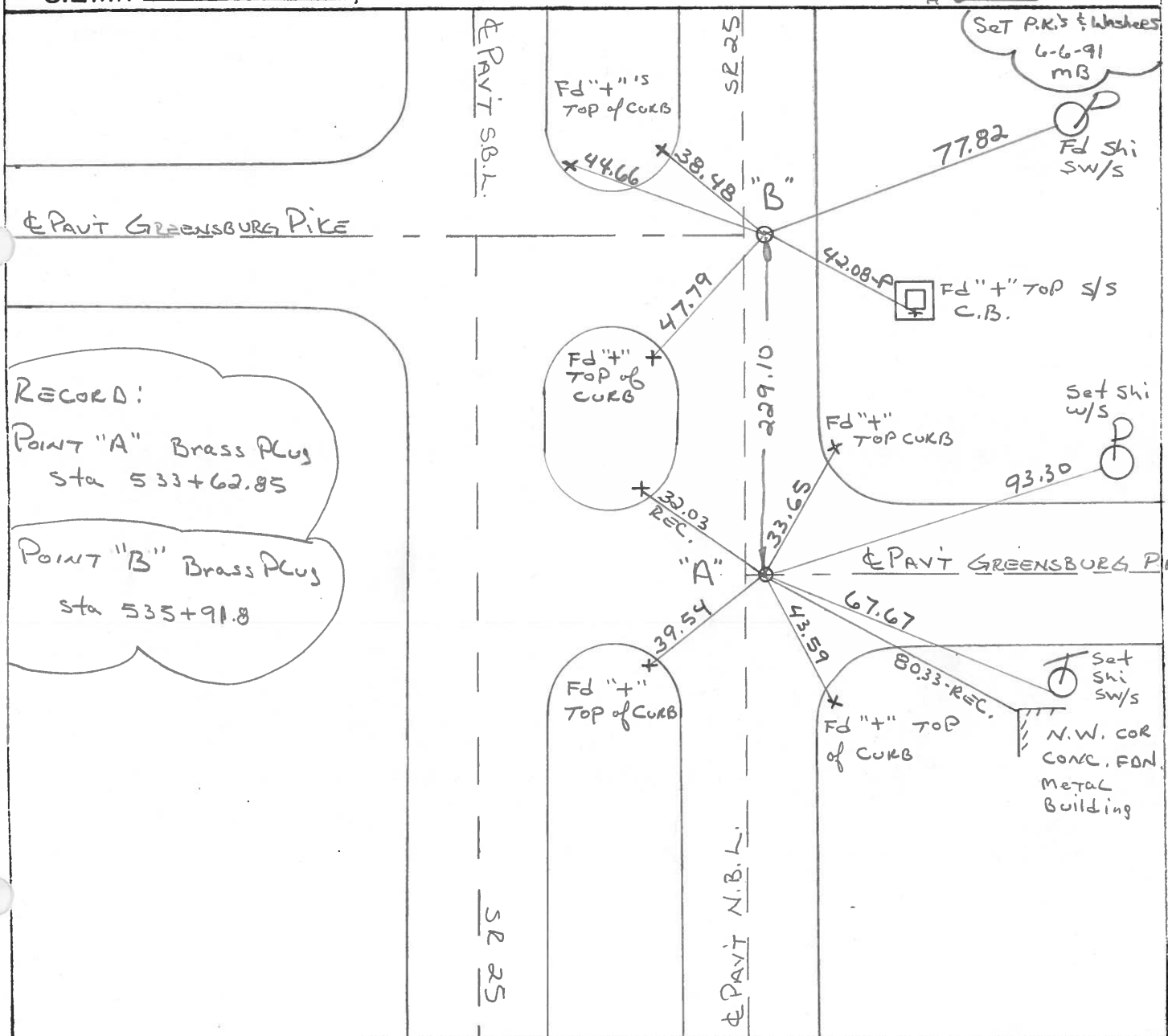
10.0 TO RT EDGE PAVEMENT

S.L.M. A = 291 + 20 ; B = 293 + 49



A B 7. PORTAGE TWP

Set P.K.'s & Washers
6-6-91
MB



RECORD:
POINT "A" Brass Plug
Sta 533+62.85
POINT "B" Brass Plug
Sta 533+91.8

PAVT S.B.L.

SR 25

PAVT N.B.L.

Set Shi SW/S
N.W. COR
CONC. FDN.
METAL
Building

Fd \"+\"' TOP S/S
C.B.

Fd \"+\"' TOP CURB

Fd \"+\"' TOP of CURB

Fd \"+\"' TOP of CURB

80.33-REC.
Fd \"+\"' TOP of CURB

33.03 REC.

"A"

33.65

67.67

93.30

PAVT GREENSBURG PIKE

42.08-P

47.79

"B"

229.10

33.03 REC.

39.54

43.59

39.54

Fd \"+\"' TOP of CURB

44.66

38.48

SR 25

77.82

Fd Shi SW/S

CHANGES MADE ON ORIGINALS
 O.D.O.T. DISTRICT 2 SURVEY OFFICE

County WOOD S.R.-U.S. 25

Date 6-10-81

Township Liberty

Weather clear

Section 12

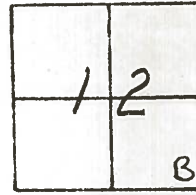
Temp. +75°

T4N, R0E

Personnel Hoffman

House holder

11 - # 12



8-5-82
+75°

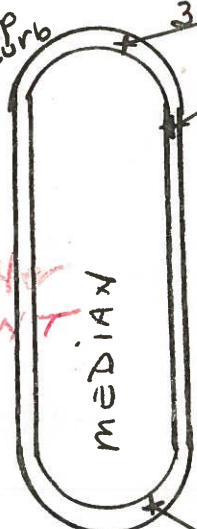
Pt. "A" Fd. BRASS PLUG @ SURFACE, 1.6' E. of & PAUT, N.B.L.
 STA 533+62. 85-REC. 13.6' TO W. Edge PAUT

Pt. "B" Fd BRASS PLUG @ SURFACE, 1.8' E of & PAUT, N.B.L.
 STA 535+91. 8-REC 10.3' TO E. Edge PAUT.

Greensburg Pike - West

Set P.K./WASHY @ EACH POINT

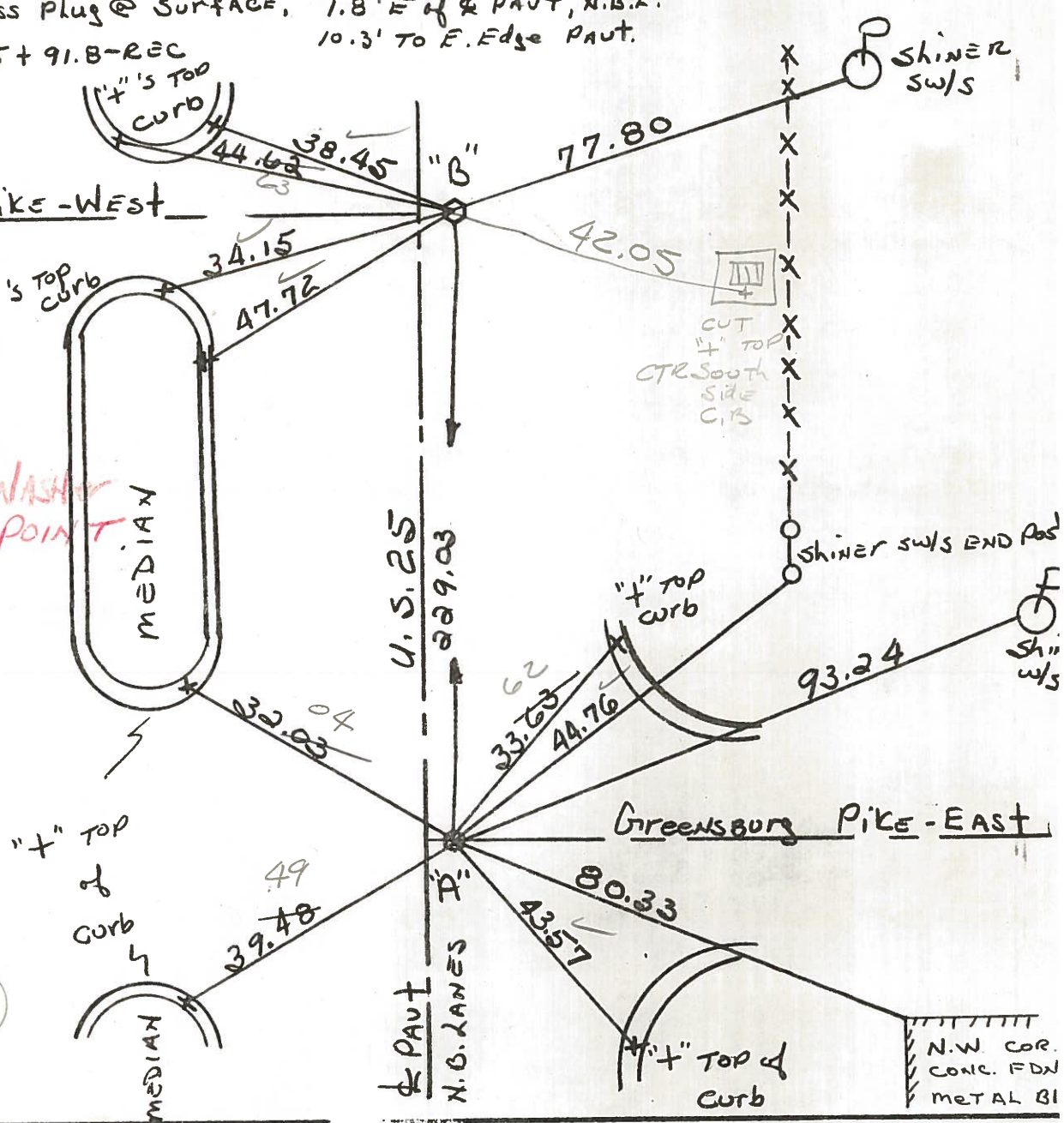
11-9-82
SULL



U.S. 25

Greensburg Pike - East

& PAUT
N.B. LINES P.



294+24
SLM PT. B

SLM
PT. "A"
291+95

N.W. COR.
CONC. FDN
METAL BI

County WOOD S.R. -U.S. 25

Date 6-10-81

Township LIBERTY

Weather clear

Section 12

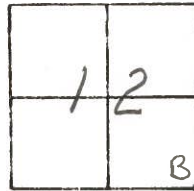
Temp. +75°

T4N, R10E

Personnel Hoffman

Householder

11 # 12



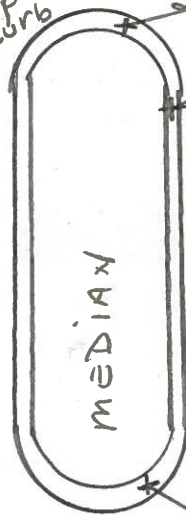
Pt. "A" Fd. BRASS Plug @ SURFACE, 1.6' E. of & PAUT, N.B.L. A
STA 533+62.85-REC. 13.6' TO W. Edge PAUT

Pt. "B" Fd BRASS Plug @ SURFACE, 1.8' E of & PAUT, N.B.L.
STA 535+91.8-REC 10.3' TO E. Edge PAUT.

Greensburg Pike - West

S.L.M. 294+24

"+" TOP CURB



U.S. 25
N.O. LANES
& PAUT

Cut "+" TOP CTR. S. SIDE C.B.

SET P.K./WASHER @ EACH POINT 11/9/82 S.W.H.

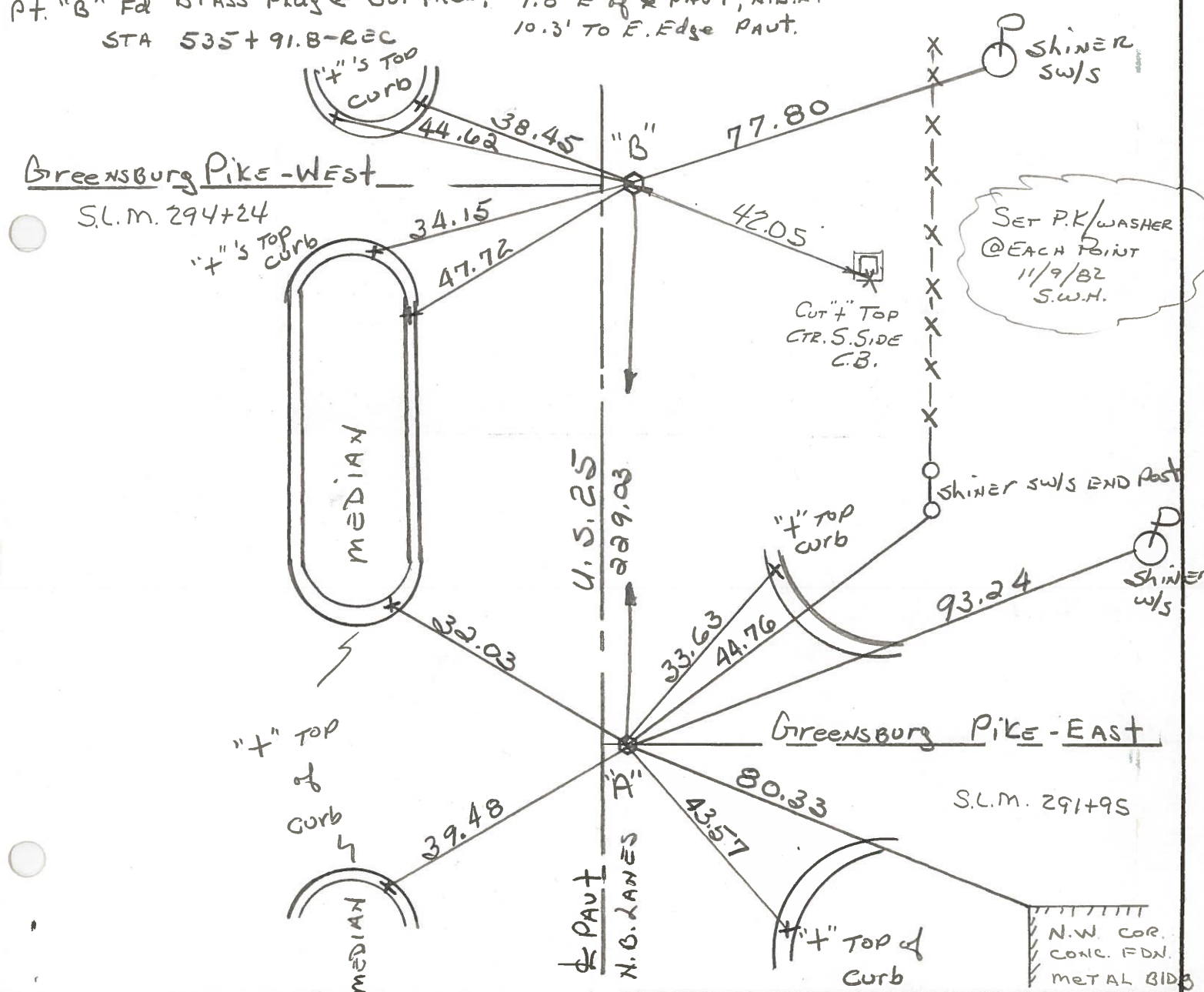
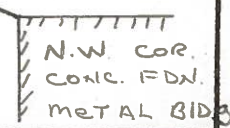
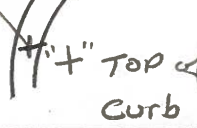
SHINER SW/S END POST

SHINER w/s

Greensburg Pike - East

S.L.M. 291+95

"+" TOP of CURB



County WOOD ^{U.S.} S.R. 25

Date 7-6-71

Township LIBERTY

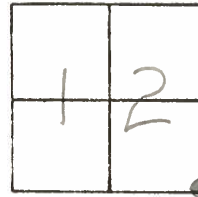
Weather CLEAR

Section 12

Temp. 83°

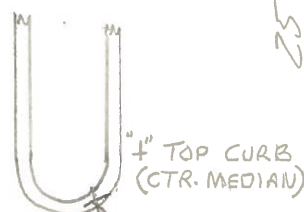
T4N, R10E

Personnel BURNSIDE

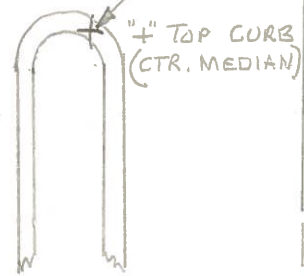


#11 - #12

S.E. COR. SEC. 12
LIBERTY TWP.
BRASS MON.
STA. 535+91.8



GREENSBURG PIKE



22903-

4\"/>

SHI. IN END
FENCE POST

93.14'

GREENSBURG PIKE

S.W. COR. SEC. 7
PORTAGE TWP
SAN. CO.
BRASS MON.
STA. 533+62.85

SHI. IN
END FENCE POST

N.W. COR.
CONC. FDN.
(METAL BLOC)

U.S.

PERSONNEL	TITLE	PERSONNEL	TITLE	COUNTY	DATE
				Wood	4-5-60
				U.S. #25	WEATHER
				SEC.	TEMP.

DESCRIPTION	LEFT	CENTER LINE	RIGHT	JOB NO.
Sta. 507+07.0 W. 1/4 post sec. 18 Portage Twp. Brass plate - Could not raise Mobora Mon.			Shiner in Anchor Post N.N.E. 47.0 Shiner in T.P. W.N.W. 29.00 Shiner in P.P. N.N.E. 85.36 Shiner in 8" oak S.E. 95.76 W. edge post. 7.85 E. edge 12.15 Shiner in End Post N.N.E. 41.07 Shiner in End Post N.E. 30.63 Shiner in Anchor Post E. 29.71	
	(9) #237			
Sta. 509+31.4 E. 1/4 post sec. 13 Liberty Twp. Brass plate with top - (Could not plate gone (raise)			Shiner in T.P. N.W. 58.28 Shiner in T.P. S.S.W. 89.15 Shiner in P.P. N.E. 53.30 59.34 Iron cor. post S.W. 35.45 W. edge post. 8.55' E. edge 11.35' Shiner Brace Post N.N.E. 45.75 Shiner Brace Post N.E. 39.43 "X" E. Edge S. Bound lane (west) 44.10' "X" E. Edge S. Bound lane (N. west) 54.37'	
	(10) #238			
Sta. 533+62.85 S.W. cor. sec. 7 Portage Twp. <u>Greensburg Pike East.</u> Brass plate in lot post.			Shiner in T.P. E.S.E. 66.74 Shiner in P.P. S.S.E. 94.22 Shiner in T.P. W. 38.16 Shiner in End Post N.N.E. 44.74 Shiner in P. Pole N.E. 93.10 Shiner in End Post E.S.E. 50.93 Shiner in T. Pole S.E. 66.94	
	(11) #239			
Sta. 535+91.8 S.E. cor. sec. 12 Liberty Twp. <u>Greensburg Pike West.</u> Brass plate in E post.			Shiner in P.P. N.N.E. 94.60 Shiner in T.P. N.W. 45.00 Shiner in T.P. W.N.W. 67.13 conc. E/W mon. S.W. 57.29 "X" in conc. curb N.W. 38.3 "X" in conc. curb S.W. 34.14	
	(12) #240			