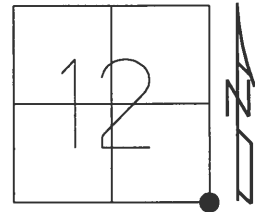
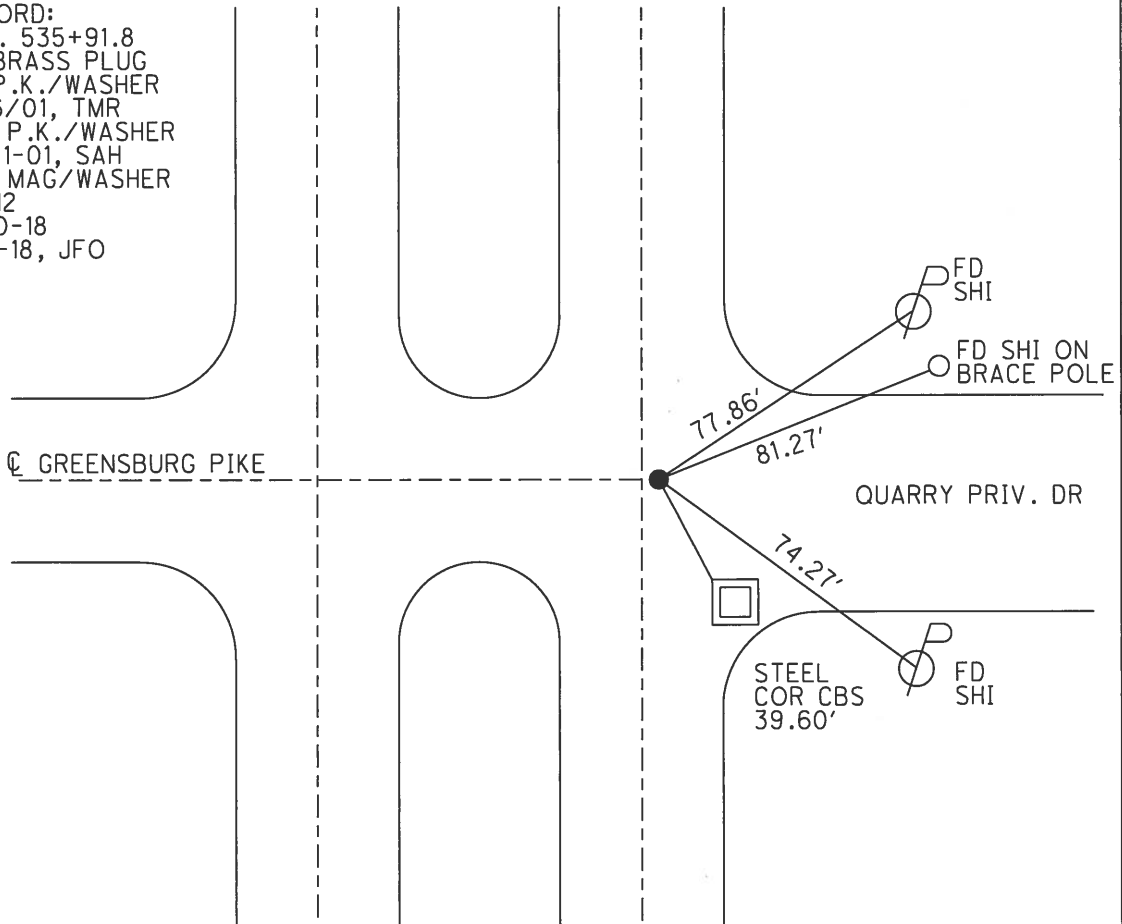


O.D.O.T. DISTRICT 2 SURVEY OFFICE (USE ONLY)

PERSONNEL	REFERENCE NO. <u>12</u>	SHEET <u>23</u> OF <u>36</u>
NOTES <u>RHOADES</u>	DATE <u>5/30/18</u>	ROUTE <u>SR 25</u>
H.C. <u>O'DONNELL</u>	WEATHER <u>CLOUDY</u>	COUNTY <u>WOOD</u>
R.C. <u>TRENKA</u>	TEMP. <u>84°</u>	TOWNSHIP <u>LIBERTY</u>
		SECTION <u>12</u>
DWG BY <u>MILLER</u>	PID <u>NO PID</u>	T <u>4</u> N R <u>10</u> E
TYPE MONUMENT <u>MAG/WASHER</u>		
ON SURFACE - BELOW <u>ON</u>		
OFFSET <u>Q</u> PAVEMENT <u>1.6'</u> <u>LT</u> : RT		
<u>10.0'</u> TO <u>LT</u> EDGE PAVEMENT		
STATION: <u>293+49</u>		
HORIZ.DATUM: <u>NAD83(2011)</u>	GEOID: <u>NAVD88 2012A</u>	
GRID: NORTHING: <u>601569.459</u>	EASTING: <u>1652488.338</u>	



RECORD:
 STA. 535+91.8
 FD BRASS PLUG
 FD P.K./WASHER
 4/16/01, TMR
 SET P.K./WASHER
 10-31-01, SAH
 SET MAG/WASHER
 REF12
 5-30-18
 10-1-18, JFO



O.D.O.T. DISTRICT 2 SURVEY OFFICE

PERSONNEL

REFERENCE NO. 11E12

SHEET 13 OF 23

NOTES Huss

H.C. Rouso

R.C. VanDusen

DATE 4-16-01

WEATHER Clgy-Rain

TEMP. +42°F

ROUTE SR 25

COUNTY Wood

TOWNSHIP Liberty

SECTION 12

T4N R10E

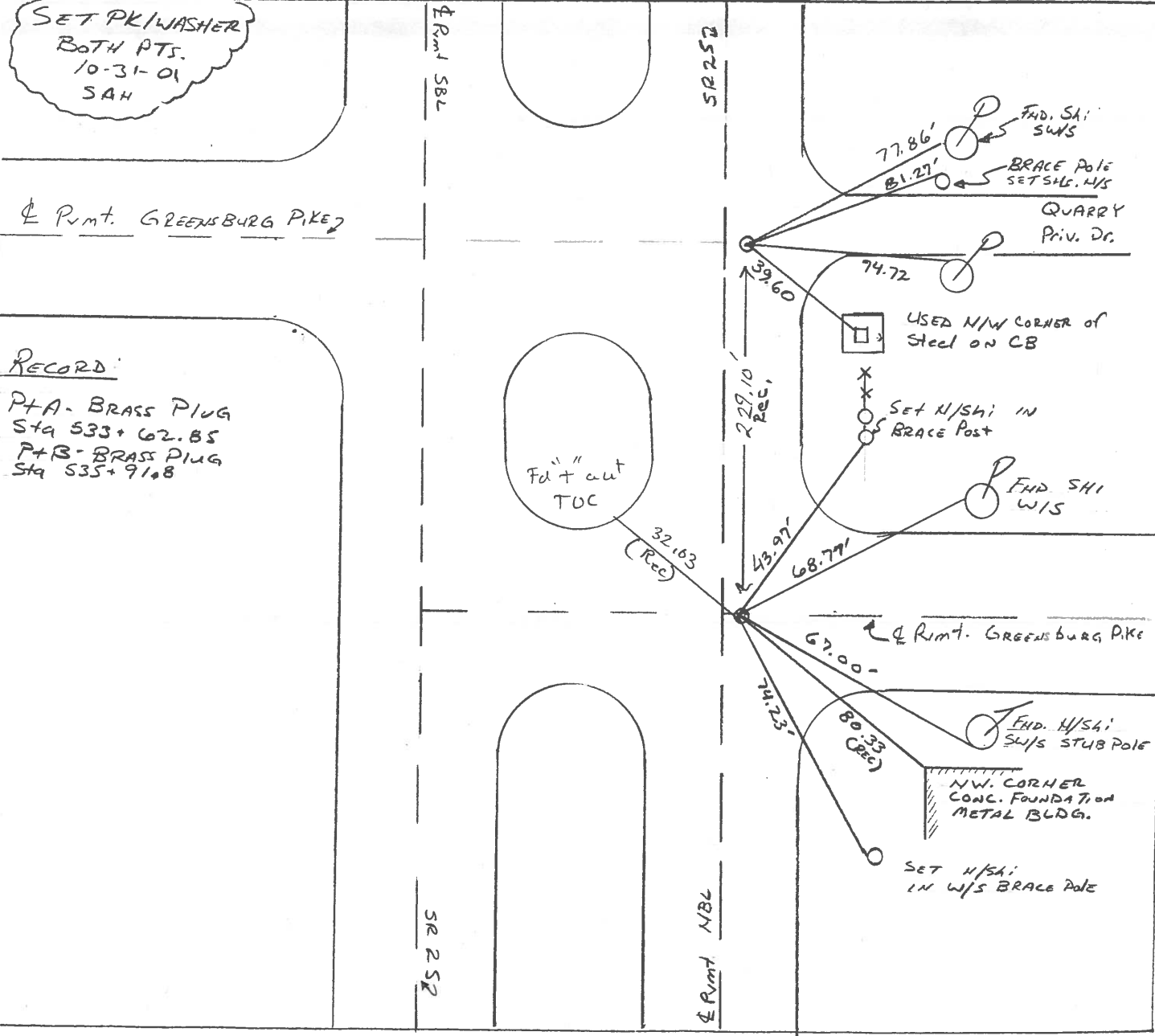
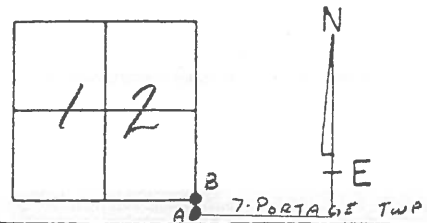
TYPE MONUMENT A-PK WASHER / B-PK WASHER

ON SURFACE - ~~BELOW~~ BOTH

~~LEFT - & PART - RIGHT~~ A-1.4 RT / B 1.6 RT

10.0 TO RT EDGE PAVEMENT

S.L.M. A = 291+20 / B = 293+49



RECORD:
 P+A - BRASS PLUG
 Sta 533+62.85
 P+B - BRASS PLUG
 Sta 535+91.8

O.D.O.T. DISTRICT 2 SURVEY OFFICE

PERSONNEL

REFERENCE NO. 11 E 12

SHEET 13 OF 23

NOTES HOFFMAN

H.C. LOSHRKE

R.C. BARNHISEL

DATE 3-26-91

WEATHER OVERCAST

TEMP. 55°

ROUTE SR 25

COUNTY WOOD

TOWNSHIP LIBERTY

SECTION 12

T4 N R 10 E

"A" "B"

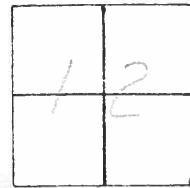
TYPE MONUMENT P.K./WASHER - P.K./WASHER

ON SURFACE - ~~BELOW~~ YES - YES

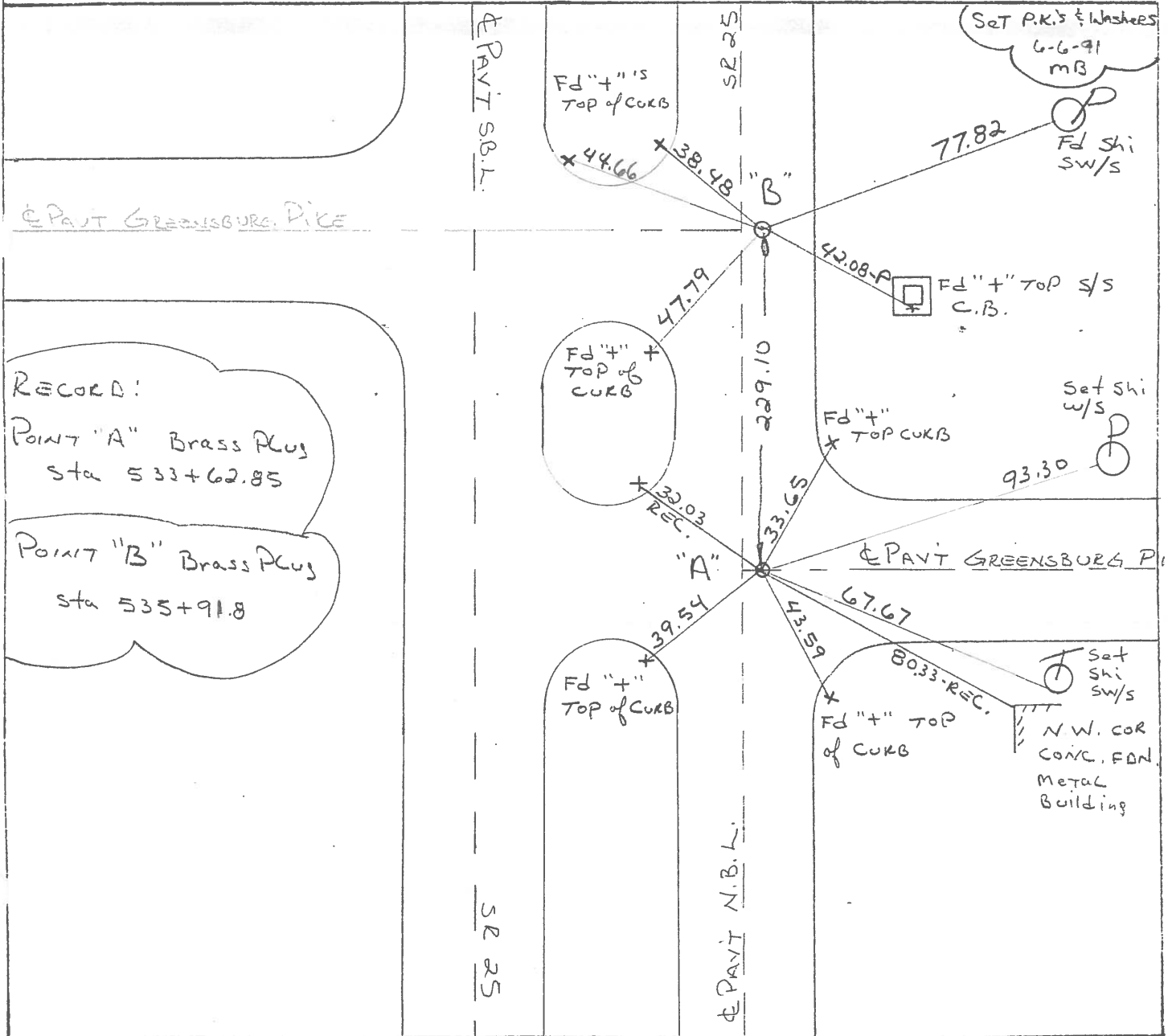
~~LEFT - C PAV'T.~~ - RIGHT 1.4 - 1.6

10.0 TO RT EDGE PAVEMENT

S.L.M. A = 291 + 20 ; B = 293 + 49



A B
7. PORTAGE TWP



RECORD:
 Point "A" Brass Plus
 Sta 533+62.85
 Point "B" Brass Plus
 Sta 535+91.8

County WOOD S.R.-U.S. 25

Date 6-10-81

Township LIBERTY

Weather clear

Section 12

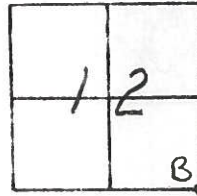
Temp. +75°

T4N, R10E

Personnel Hoffman

House holder

11 - # 12



8-5-82
+75°

Pt. "A" Fd. BRASS PLUG @ SURFACE, 1.6' E. of & PAUT, N.B.L.
STA 533+62.85-REC. 13.6' TO W. Edge PAUT

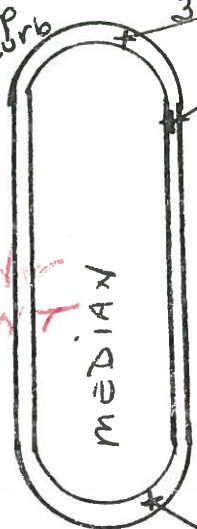
Pt. "B" Fd BRASS PLUG @ SURFACE, 1.8' E of & PAUT, N.B.L.
STA 535+91.8-REC 10.3' TO E. Edge PAUT.

Greensburg Pike - West

294+24
SLM PT. B

Set P.L./W.A.M.
@ EACH POINT

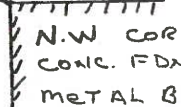
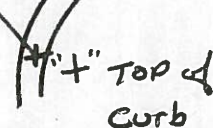
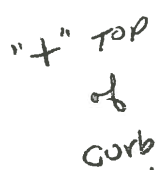
11-9-80
S.W.S.



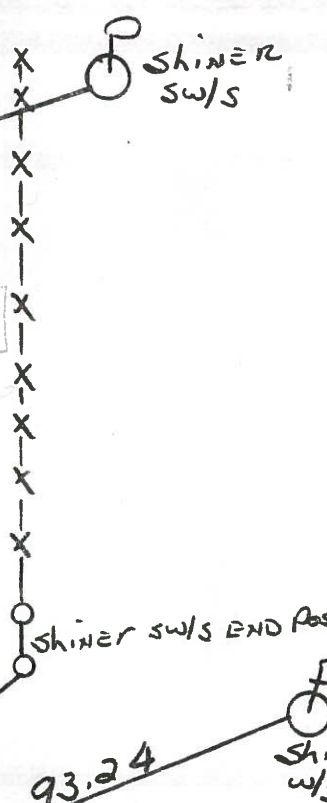
U.S. 25
229.03
& PAUT
N.B. LANES



Greensburg Pike - East



SLM
PT "A"
291+95



44.62 38.45 77.80

34.15 47.72

42.05

32.04 32.03

33.63 44.76

93.24

39.48 49

43.57 80.33

County WOOD S.R. -U.S. 25

Date 6-10-81

Township Liberty

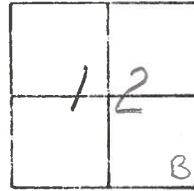
Weather clear

Section 12

Temp. +75°

T4N, R10E

Personnel Hoffman



11 # 12

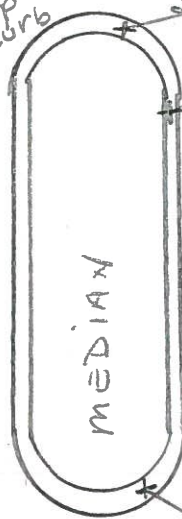
House holder

Pt. "A" Fd. BRASS PLUG @ SURFACE, 1.6' E. of & PAVT, N.B.L. A
STA 533+62.85-REC. 13.6' TO W. Edge PAVT

Pt. "B" Fd BRASS PLUG @ SURFACE, 1.8' E. of & PAVT, N.B.L.
STA 535+91.8-REC 10.3' TO E. Edge PAVT.

Greensburg Pike - West

S.L.M. 294+24



"x" 's TOP CURB

"x" TOP of CURB



U.S. 25
& PAVT
N.O. LANES "D"

"B"

"D"

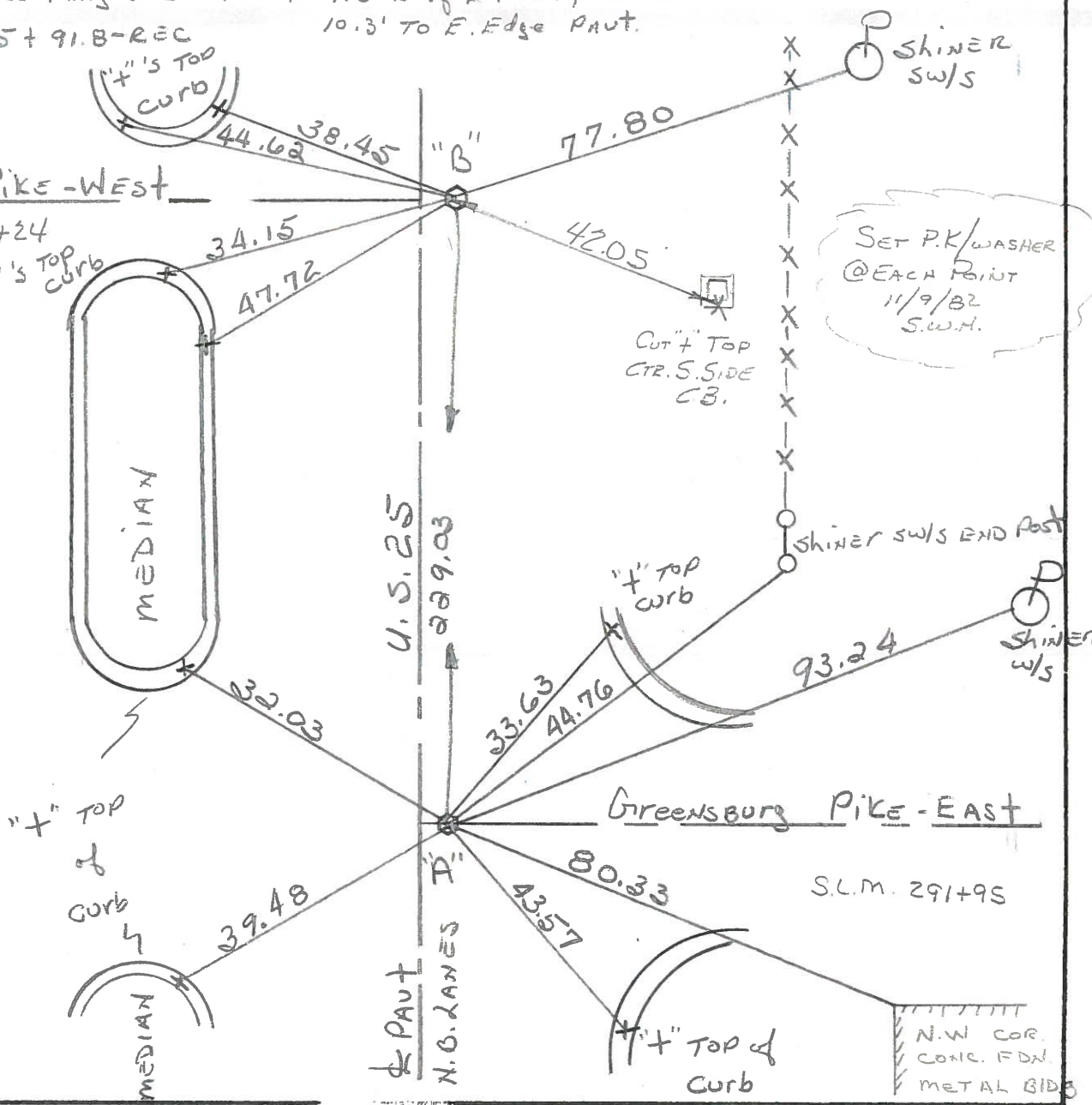
Cut "x" TOP
CTR. S. SIDE
CB.

SET P.K/WASHER
@ EACH POINT
11/9/82
S.W.H.

Greensburg Pike - East

S.L.M. 291+95

N.W. COR.
CONC. FDN
METAL BIDS



County WOOD U.S. 25 S.R. 25

Township LIBERTY

Section 12

T4N, R1E

Personnel BURNSIDE

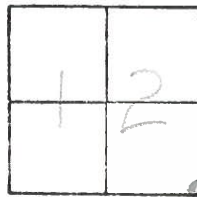
SMITH

BOWERS

Date 7-6-71

Weather CLEAR

Temp. 83°



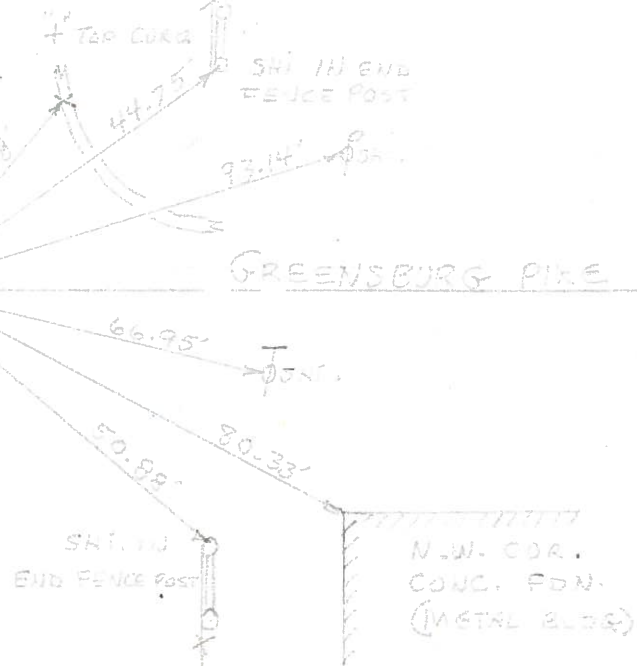
#11 - #12

S.E. COR. SEC. 12
LIBERTY TWP.
BRASS MON.
STK. 535+99.2



GREENSBURG PIKE

S.W. COR. SEC. 7
PORTAGE TWP
SRN. CO.
BRASS MON.
STK. 533+62.25



PERSONNEL	TITLE	PERSONNEL	TITLE

COUNTY Wood DATE 4-5-60

S.R. U.S. #25 WEATHER _____

SEC. _____ TEMP. _____

DESCRIPTION	LEFT	CENTER LINE	RIGHT	JOB NO.
-------------	------	-------------	-------	---------

Sta. 507+07.0 W. 1/4 post sec. 18 Portage Twp. Brass plate - Could not raise Mobora Mon.			Shiner in Anchor Post N.N.E. 47.0' Shiner in T.P. W.N.W. 29.00 Shiner in P.P. N.N.E. 85.38 Shiner in 8" oak S.E. 95.76 W. edge post. 7.85 E. edge 12.15 Shiner in End Post N.N.E. 41.07 Shiner in End Post N.E. 30.63 Shiner in Anchor Post E. 29.71	
	(9) #237			
Sta. 509+31.4 E. 1/4 post sec. 13 Liberty Twp. Brass plate with top - (Could not plate gone (raise)			Shiner in T.P. N.W. 58.28 Shiner in T.P. S.S.W. 89.15 Shiner in P.P. N.E. 53.30 59.34 Iron cor. post S.W. 35.45 W. edge post. 8.55' E. edge 11.35' Shiner Brace Post N.N.E. 45.75 Shiner Brace Post N.E. 39.43 "X" E. Edge S. Bound lane (west) 44.10' "X" E. Edge S. Bound lane (N. west) 54.37'	
	(10) #238			
Sta. 533+62.85 S.W. cor. sec. 7 Portage Twp. <u>Greensburg Pike East.</u> Brass plate in lot post.			Shiner in T.P. E.S.E. 66.74 Shiner in P.P. S.S.E. 94.22 Shiner in T.P. W. 38.16 Shiner in End Post N.N.E. 44.74 Shiner in P. Pole N.E. 93.10 Shiner in End Post E.S.E. 50.93 Shiner in T. Pole S.E. 66.94	
	(11) #239			
Sta. 535+91.8 S.E. cor. sec. 12 Liberty Twp. <u>Greensburg Pike West.</u> Brass plate in E post.			Shiner in P.P. N.N.E. 94.60 Shiner in T.P. N.W. 45.00 Shiner in T.P. W.N.W. 67.13 conc. E/W mon. S.W. 57.29 "X" in conc. curb N.W. 38.3 "X" in conc. curb S.W. 34.14	
	(12) #240			