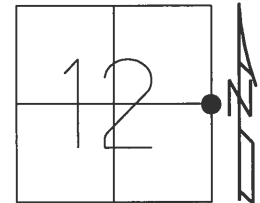


O.D.O.T. DISTRICT 2 SURVEY OFFICE (USE ONLY)

PERSONNEL _____ REFERENCE NO. 13 SHEET 24 OF 36
NOTES HUSS DATE 4/16/01 ROUTE SR 25
H.C. ROUSOS WEATHER CLOUDY/WINDY COUNTY WOOD
R.C. VAN DUSEN TEMP. 41° TOWNSHIP LIBERTY
SECTION 12
DWG BY MILLER PID NO PID T 4 N R 10 E

TYPE MONUMENT _____ P.K./WASHER _____
ON SURFACE - ~~BELOW~~ ON _____
OFFSET C PAVEMENT 0.5' ~~LT:RT~~
11.2' TO LT EDGE PAVEMENT
STATION: 317+63



HORIZ.DATUM: NAD83(2011) GEOID: NAVD88 2012A
GRID: NORTHING: 603982.897 EASTING: 1652514.017

RECORD:
STA. 571+29.6
FD BRASS MON
FD P.K./WASHER
4/16/01, TMR
SET P.K./WASHER
10-31-01, SAH
FD P.K. SHANK/WASHER
REF13
5-30-18
10-1-18, JFO

C S.B. SR 25

C N.B. SR 25

\bullet EAST PORTAGE CORP

O.D.O.T. DISTRICT 2 SURVEY OFFICE

PERSONNEL

REFERENCE NO. 13 & 14

SHEET 14 OF 23

NOTES

Huss

H.C.

Rousso

R.C.

Van Dusen

DATE

4-16-61

WEATHER

Clay. Rain

TEMP.

41°F

ROUTE

SR 25

COUNTY

WOOD

TOWNSHIP

LIBERTY

SECTION

12

T 4 N R 10 E

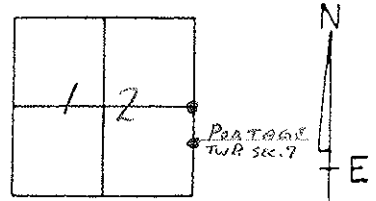
TYPE MONUMENT A-PK/WASHER - B-PK/WASHER

ON SURFACE - BELOW YES - YES

LEFT - Q PAV'T. - RIGHT 0.5 LT - 0.5 RT

11.2 TO LT EDGE PAVEMENT

S.L.M. A = 217+63 ; B = 320+02



WEST PORTAGE CORP

RECORD:

PTB - BRASS MON.

PTA - BRASS MON

STA 571+29.6

Print S&L

SR 25B

'B'

'A'

Print N&L

SR 25Z

SET PK/WASHERS
BOTH PTS
10-31-01
SAM

49.45' SET N/SH;
TOP 18"
STUMP

45.15' SET N/SH;
W/S
12" PINE

75.96' SET
N/SH;
W/S

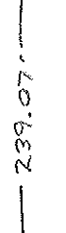
40.30 (REL) SET
N/SH;
W/S

32.44' SET N/SH;
IN BRACE POST

30.09' EAST PORTAGE CORP

74.50'

SET NAIL IN Print
of D&E TO ASPHALT
PLANT



O.D.O.T. DISTRICT 2 SURVEY OFFICE

PERSONNEL

REFERENCE NO. 13^E 14

SHEET 14 OF 23

NOTES HOFFMAN

H.C. LOHRKE

R.C. BARNHISEL

DATE 3-26-91

WEATHER OVERCAST

TEMP. 55°

ROUTE SR 25

COUNTY WOOD

TOWNSHIP LIBERTY

SECTION 12

T4 N R 10 E

"A" "B"

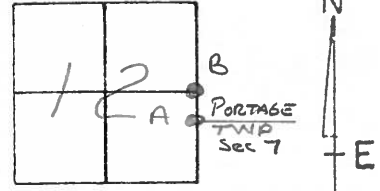
TYPE MONUMENT P.K./WASHER - SMALL R.P. SPK.

ON SURFACE - BELOW YES - YES

LEFT - C PAVT. - RIGHT 0.5' LT. - 0.5' RT.

11.2 TO LT. EDGE PAVEMENT

S.L.M. "A" = 317+63 ; B = 320+02



Set P.K.'s & Washers
6-6-91
MB

RECORD: POINT "B"
BRASS MONUMENT

WEST-PORTAGE CORP.

RECORD: POINT "A"
BRASS MONUMENT
STA. 571+29.6

Set Shi
SE/S

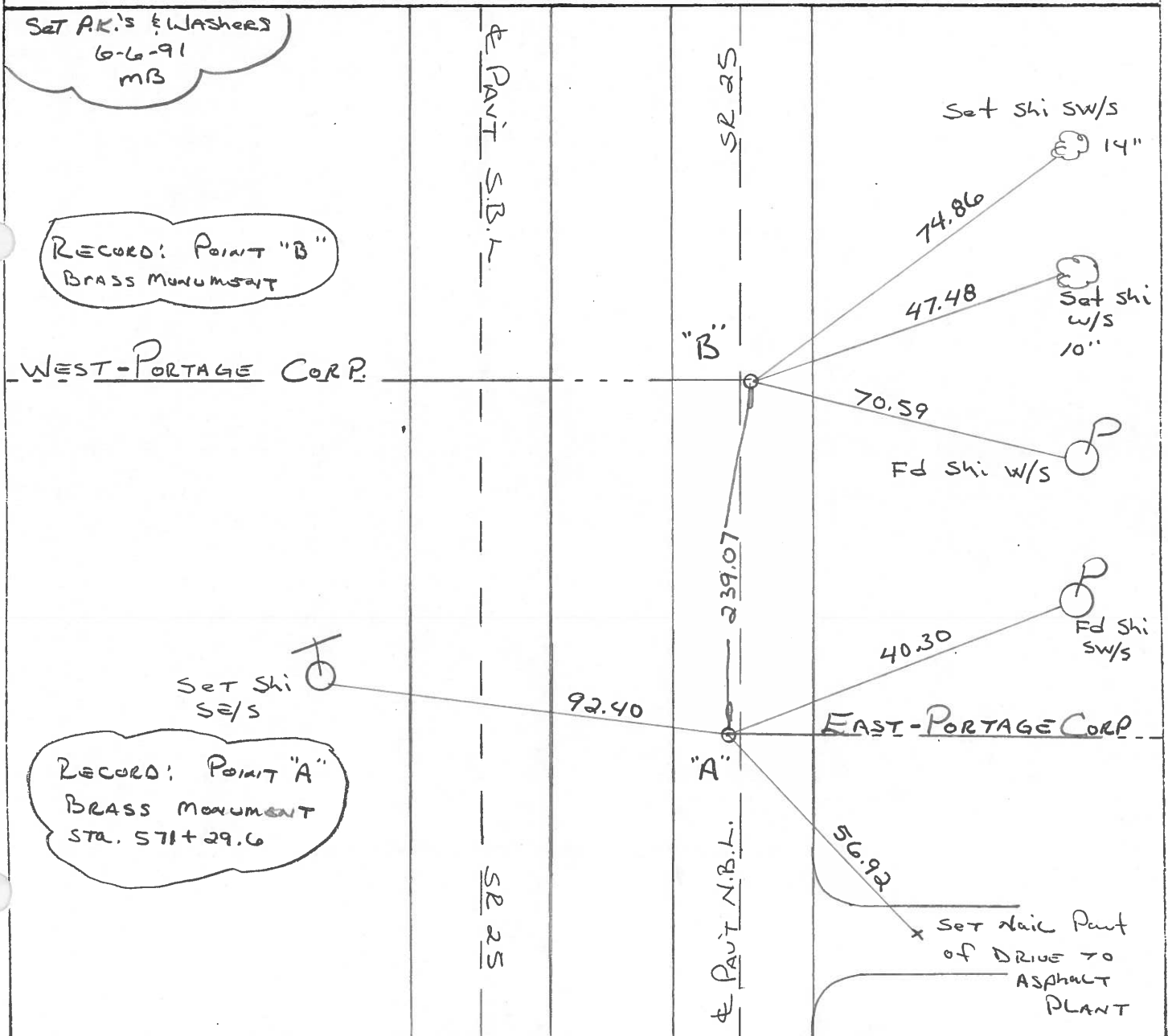
Set Shi SW/S
14"

Set Shi
W/S
10"

Fd Shi W/S

Fd Shi
SW/S

Set Nail Point
of DRIVE TO
ASPHALT
PLANT



County WOOD S.R.-U.S. 25

Township Liberty

Section 12

T4N, R10E

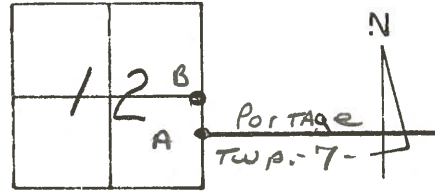
Personnel Hoffman

Householder

Date 6-10-81

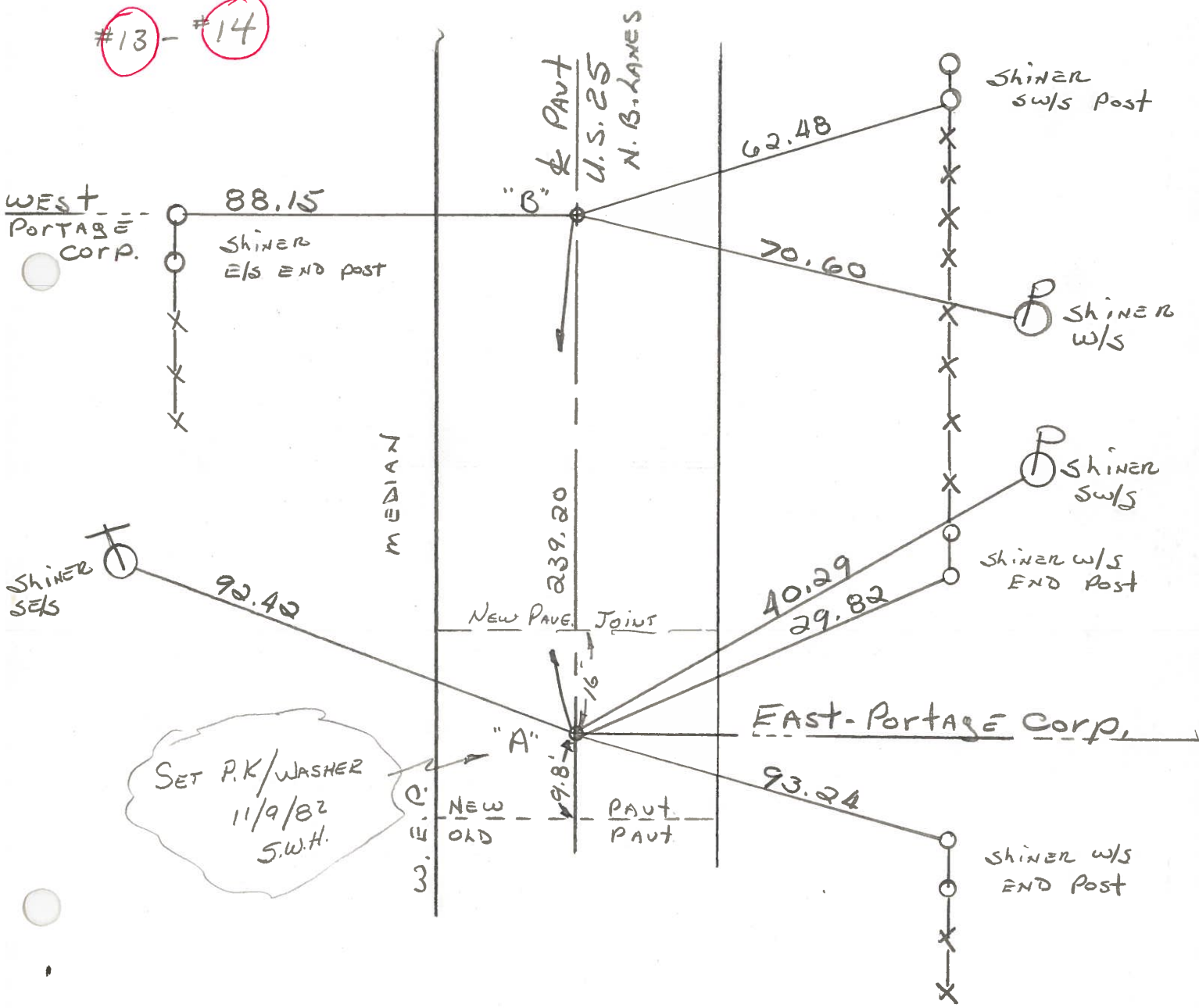
Weather clear

Temp. +75°



Pts. "A" & "B" Fd. SMALL R.R. SPKS @ SURFACE, CTR. of PAUT, N.B. LANES

#13 - #14



ODOT. DISTRICT 2 SURVEY OFFICE

SHEET _____ OF _____

County WOOD ^{U.S.} ~~S.R.~~ 25

OK-5-18-78

Date 5-21-71

Township LIBERTY

Weather CLEAR

Section 12

Temp. 72°

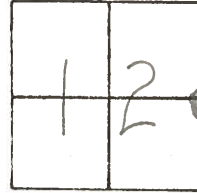
T4N, R10E

Personnel BURNSIDE

SMITH

BOWERS

HOLCOMBE



#13 - #14

X

BRASS MON.
P.K. NAIL

PORTAGE CORP. WEST

SHI. IN
FENCE POST

88.18'

62.50'

70.60'

239.20' mea.

SHI.

SHI.

92.50'

40.29'

29.82'

SHI. END
FENCE POST

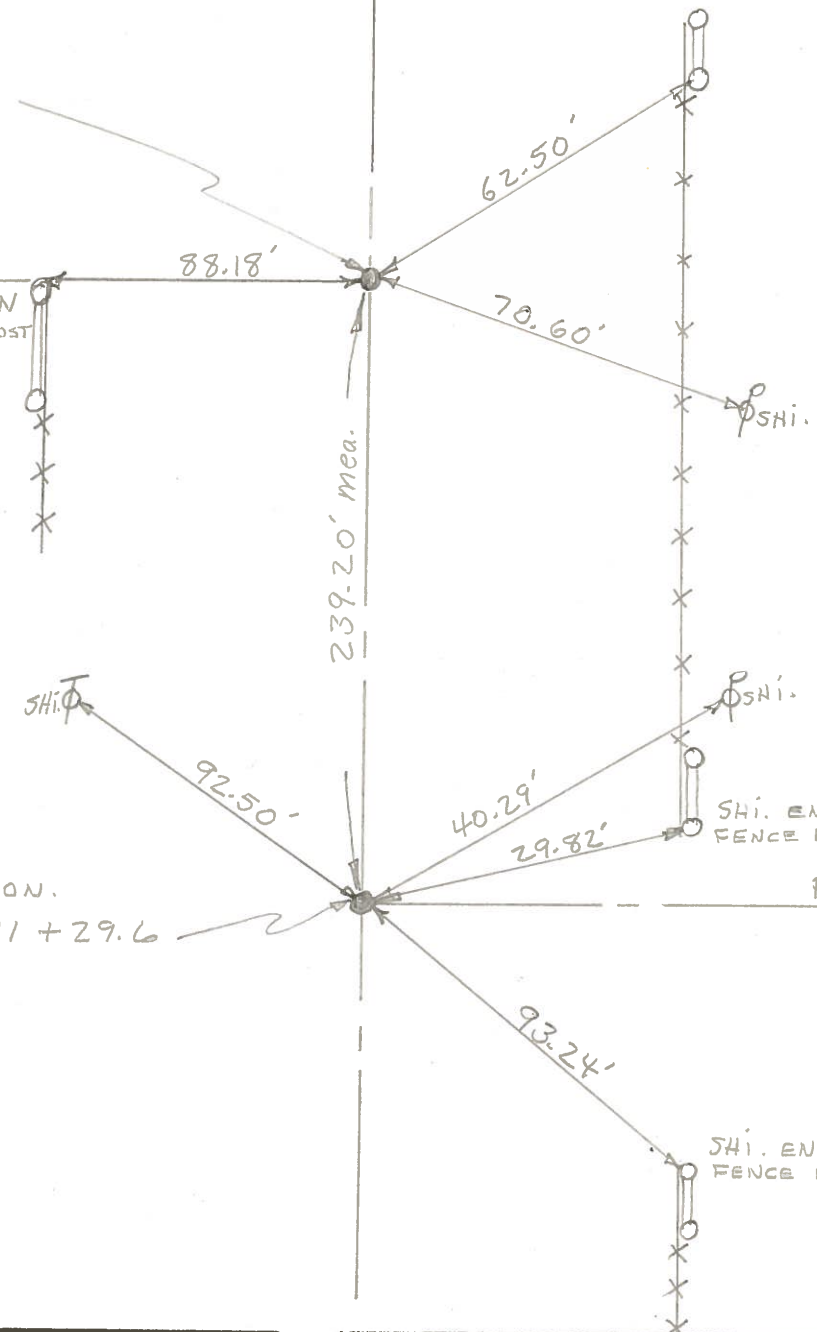
BRASS MON.

S.L.M. 571 + 29.6

PORTAGE CORP. EAST

93.24'

SHI. END
FENCE POST



PERSONNEL TITLE PERSONNEL TITLE

COUNTY Wood DATE 4-7-60

S. R. U.S. #25 WEATHER

SEC. TEMP.

DESCRIPTION LEFT CENTER LINE RIGHT JOB NO.

| | | | |
|---|--|--|--|
| Sta. 560 + 05.10 Portage Corp. Line East Brass plate | | | Shiner in End Post E.N.E. 29.76' Shiner in P.P. E.N.E. 40.35 40.47' Shiner in T.P. N.W. 39.92' Shiner in 12' Evergreen W.N.W. 56.93' Shiner in 30' Elm W. 64.10' Wedge part. 11.63' E. edge 12.32' Shiner 16" Maple S.E. 68.47' |
| (13) #241 | | | Shiner in Anchor Post N.E. 62.63 Shiner in T.P. N.W. 44.15' Shiner in T.P. S.W. 91.00' Shiner in P.P. S.E. 70.48 73.05' Wedge part. 11.83 E. edge 12.12 Shiner in End Post N.N.E. 88.86' Iron Fence Post East 29.03' |
| Sta. 562 + 44.4 Portage Corp. West Brass plug, top of the gate | | | Shiner in P.P. W.S.W. ^{69.69} 69.72' Shiner in P.P. S.E. 53.89 42.73' Iron pin in brick sidewalk S.E. 43.35 SE. Cor. gas. Sta. N.W. 80.55' Town Pump N.W. (1 above ground) 68.55' Shiner T. Pole N.W. 58.65' Shiner T. Pole N.E. 58.48' |
| (14) #242 | | | |
| Sta. 588 + 94.96 S.E. cor. Sec. 1 Liberty Twp. N.E. cor. sec. 12 Liberty Twp. Iron rod on top of Stone, center of portage | | | |
| (15) #243 | | Note See sheets 6A-6B New. wit. | |
| Sta. 612 + 96.65 W. 1/4 post sec. 6 Portage Twp. Brass plate | | | Shiner in P.P. S.E. 47.96' Shiner in T.P. S.S.W. 69.78' Shiner in T.P. N.N.W. 69.94' Shiner in T. Pole N.W. 77.20' Shiner in T. Pole S.W. 81.98' |
| (17) #244 | | | "X" cut in Curb East 08.25' "X" cut in Curb N.E. 14.60' "X" cut in Curb S.E. 16.90' |