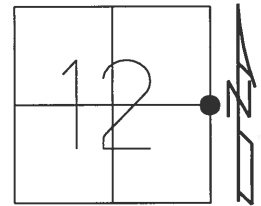


O.D.O.T. DISTRICT 2 SURVEY OFFICE (USE ONLY)

PERSONNEL _____ REFERENCE NO. 14 SHEET 25 OF 36
 NOTES HUSS DATE 4/16/01 ROUTE SR 25
 H.C. ROUSOS WEATHER CLOUDY/RAIN COUNTY WOOD
 R.C. VAN DUSEN TEMP. 41 TOWNSHIP LIBERTY
 SECTION 12
 DWG BY MILLER PID NO PID T 4 N R 10 E

TYPE MONUMENT _____ P.K./WASHER _____
 ON SURFACE - ~~BELOW~~ ON _____
 OFFSET ϕ PAVEMENT 0.5' LT : ~~RT~~
11.2' TO LT EDGE PAVEMENT
 STATION: 320+02



HORZ. DATUM: NAD83(2011) GEOID: NAVD88 2012A
 GRID: NORTHING: 604221.837 EASTING: 1652516.831

RECORD:
 FD BRASS MON
 FD P.K./WASHER
 4/16/01, TMR
 SET P.K./WASHER
 10-31-01, SAH
 FD P.K./WASHER
 REF14
 5-30-18
 10-1-18, JFO

WEST PORTAGE CORP

ϕ S.B. SR 25

ϕ N.B. SR 25

75.96'
 REC SET
 SHI

O.D.O.T. DISTRICT 2 SURVEY OFFICE

PERSONNEL

REFERENCE NO. 13 & 14

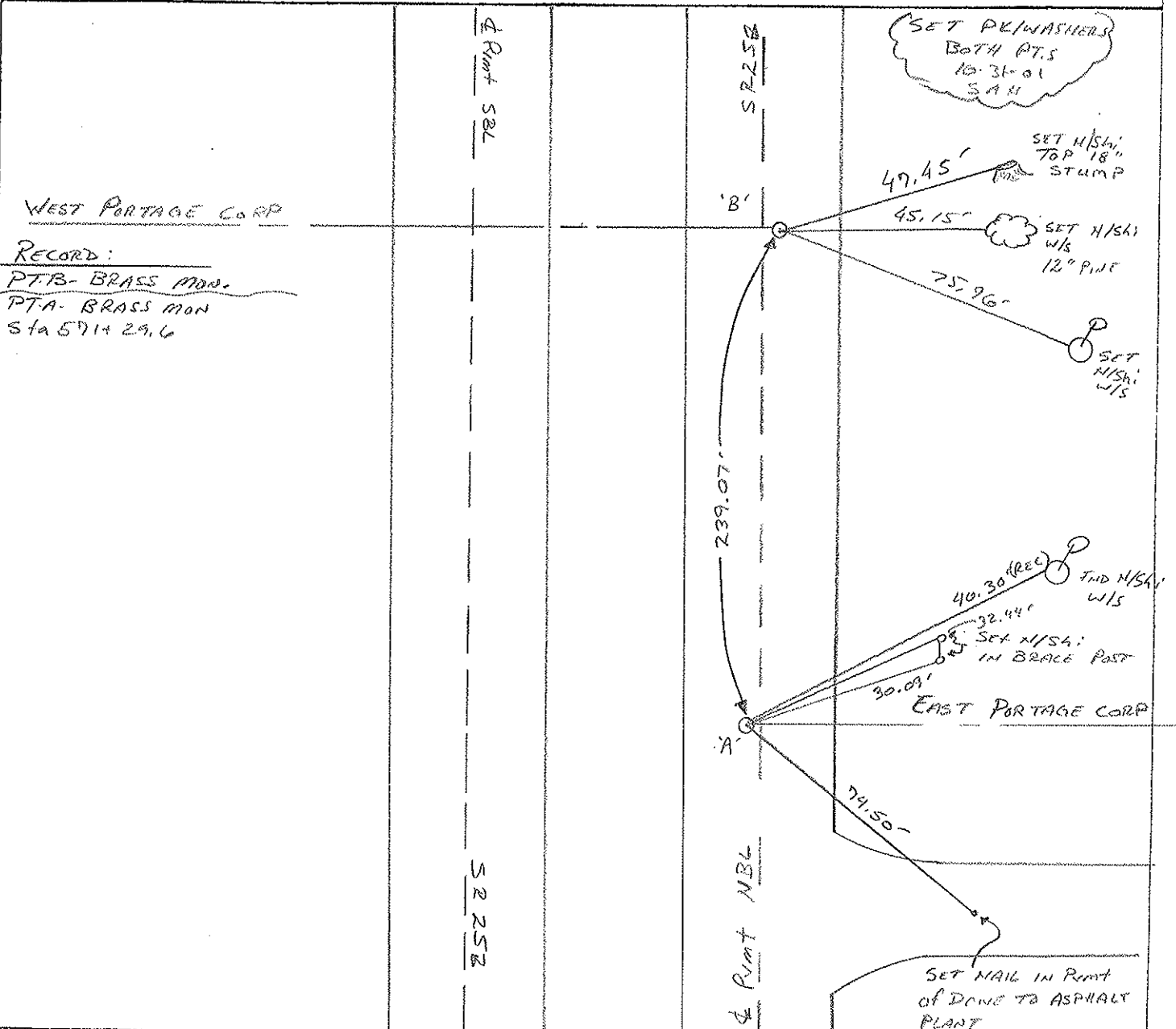
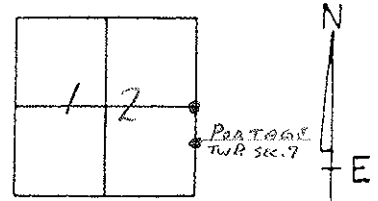
SHEET 14 OF 23

NOTES Huss
 H.C. Rouso
 R.C. Van Dusen

DATE 4-16-61
 WEATHER Clay. Rain
 TEMP. 41°F

ROUTE SR 25
 COUNTY WOOD
 TOWNSHIP LIBERTY
 SECTION 12
T 4 N R 10 E

TYPE MONUMENT A-PK/WASHER - B-PK/WASHER
 ON SURFACE - BELOW YES - YES
 LEFT - PAV'T. - RIGHT O.S.LT - O.SRT
11.2 TO LT EDGE PAVEMENT
S.L.M. A = 317+63 ; B = 320+02



WEST PORTAGE CORP
 RECORD:
PTB - BRASS MON.
PTA - BRASS MON
STA 571+29.6

SET PK/WASHERS
 BOTH PTS
 10-31-01
 SAM

SET N/SH;
 TOP 18"
 STUMP

SET N/SH;
 W/S
 12" PINE

SET
 N/SH;
 W/S

40.30 (REL)
 SET N/SH;
 IN BRACE POST
 TND N/SH;
 W/S

EAST PORTAGE CORP

SET NAIL IN POINT
 OF DOME TO ASPHALT
 PLANT

O.D.O.T. DISTRICT 2 SURVEY OFFICE

PERSONNEL

REFERENCE NO. 13 & 14

SHEET 14 OF 23

NOTES HOFFMAN

H.C. LOEHRKE

R.C. BARNHISEL

DATE 3-26-91

WEATHER OVERCAST

TEMP. 55°

ROUTE SR 25

COUNTY WOOD

TOWNSHIP LIBERTY

SECTION 12

T 4 N R 10 E

"A" "B"

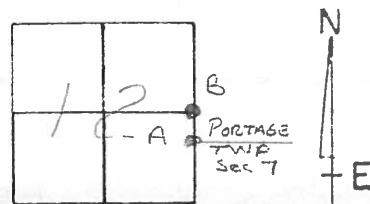
TYPE MONUMENT P.K./WASHER - SMALL R.P. SPK.

ON SURFACE - BELOW YES - YES

LEFT - C PAVT. - RIGHT 0.5' RT. - 0.5' RT.

11.2 TO LT EDGE PAVEMENT

S.L.M. "A" = 317+63 ; B = 320+02



SET PK.'S & WASHERS
6-6-91
MB

RECORD: POINT "B"
BRASS MONUMENT

WEST-PORTAGE CORP.

SET SHI
SE/S

RECORD: POINT "A"
BRASS MONUMENT
STA. 571+29.6

PAVT S.B.L.

SR 25

239.07

PAVT N.B.L.

SR 25

"B"

"A"

Set shi sw/s
14"

74.86

47.48

Set shi
w/s
10"

70.59

Fd shi w/s

40.30

Fd shi
sw/s

EAST-PORTAGE CORP.

92.40

56.92

Set nail Post
of DRIVE TO
ASPHALT
PLANT

County WOOD S.R.-U.S. 25

Date 6-10-81

Township LIBERTY

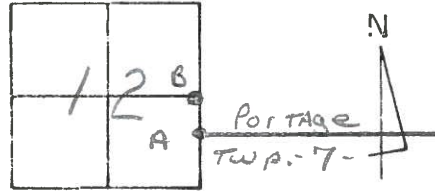
Weather clear

Section 12

Temp. +75°

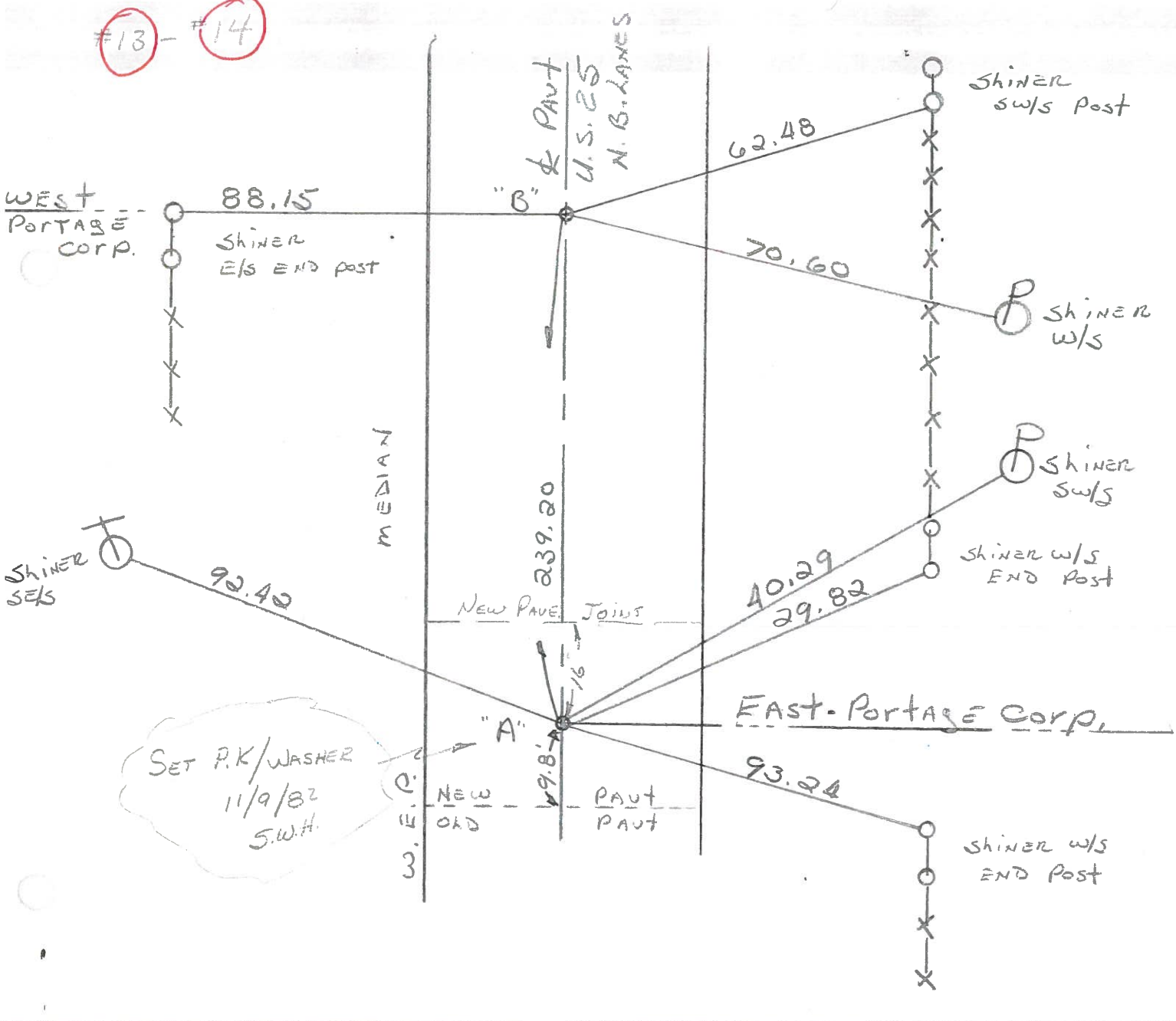
T4N, R10E

Personnel Hoffman
Householder



Pts. "A" & "B" Fd. SMALL R.R. SPKS @ surface, ctr. of PAUT, N.B. LANES

#13 - #14



ODOT. DISTRICT 2 SURVEY OFFICE

SHEET OF

County WOOD U.S. 25
S.R. 25

Township LIBERTY

Section 12

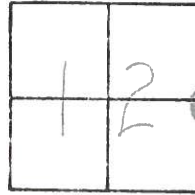
T4N, R10E

Personnel BURNSIDE
SMITH
BOWERS
HOLCOMBE

Date 5-21-71

Weather CLEAR

Temp. 72°



#13 - #14

BRASS MON.
P.K. 1191L

PORTAGE CORR. WEST

SHI. IN
FENCE POST

93.18'

62.50'

70.60'

237.50' Mon.

SHI. P.

92.50'

40.29'

29.82'

SHI. END
FENCE POST

BRASS MON.

S.L.M. 571 + 29.6

PORTAGE CORR. EAST

93.24'

SHI. END
FENCE POST



PERSONNEL	TITLE	PERSONNEL	TITLE	COUNTY	DATE
				Wood	4-7-60
				S. R. U.S. #25	WEATHER
				SEC.	TEMP.

DESCRIPTION	LEFT	CENTER LINE	RIGHT	JOB NO.
-------------	------	-------------	-------	---------

Sta. 560+05.10 Portage Corp. Line East Brass plate	#241		Shiner in End Post E.N.E.	29.74
			Shiner in P.P. E.N.E.	40.35
Sta. 562+44.4 Portage Corp. West Brass plug, top of bridge	#242		Shiner in T.P. N.W.	39.92
			Shiner in 12' Evergreen W.N.W.	56.93
Sta. 588+94.96 S.E. cor. Sec. 1 Liberty Twp. N.E. cor. sec. 12 Liberty Twp. Iron rod on top of Stone, center of portage	#243	Note see sheets 6A-6B New. Wit.	Shiner in 30' Elm W.	64.10
			Wedge part. 11.63' E edge 12.32'	
Sta. 612+96.65 W. 1/4 post sec. 6 Portage Twp. Brass plate	#244		Shiner 16" Maple S.E.	68.47
			Shiner in Anchor Post N.E.	62.63
Sta. 588+94.96 S.E. cor. Sec. 1 Liberty Twp. N.E. cor. sec. 12 Liberty Twp. Iron rod on top of Stone, center of portage	#243	Note see sheets 6A-6B New. Wit.	Shiner in T.P. N.W.	44.15
			Shiner in T.P. S.W.	91.00
Sta. 612+96.65 W. 1/4 post sec. 6 Portage Twp. Brass plate	#244		Shiner in P.P. S.E.	70.48
			Wedge part. 11.83' E edge 12.12	
Sta. 588+94.96 S.E. cor. Sec. 1 Liberty Twp. N.E. cor. sec. 12 Liberty Twp. Iron rod on top of Stone, center of portage	#243	Note see sheets 6A-6B New. Wit.	Shiner in End Post N.N.E.	88.86
			Iron Fence Post East	29.03
Sta. 588+94.96 S.E. cor. Sec. 1 Liberty Twp. N.E. cor. sec. 12 Liberty Twp. Iron rod on top of Stone, center of portage	#243	Note see sheets 6A-6B New. Wit.	Shiner in P.P. W.S.W.	69.69
			Shiner in P.P. S.E.	53.89
Sta. 612+96.65 W. 1/4 post sec. 6 Portage Twp. Brass plate	#244		Iron pin in brick sidewalk S.E.	43.33
			SE. Cor. gas. Sta. N.W.	80.53
Sta. 588+94.96 S.E. cor. Sec. 1 Liberty Twp. N.E. cor. sec. 12 Liberty Twp. Iron rod on top of Stone, center of portage	#243	Note see sheets 6A-6B New. Wit.	Town Pump N.W. (above ground)	68.53
			Shiner T. Pole N.W.	58.63
Sta. 612+96.65 W. 1/4 post sec. 6 Portage Twp. Brass plate	#244		Shiner T. Pole N.E.	58.43
			Shiner in P.P. S.E.	47.96
Sta. 612+96.65 W. 1/4 post sec. 6 Portage Twp. Brass plate	#244		Shiner in T.P. S.S.W.	69.78
			Shiner in T.P. N.N.W.	69.94
Sta. 612+96.65 W. 1/4 post sec. 6 Portage Twp. Brass plate	#244		Shiner in T. Pole N.W.	77.20
			Shiner in T. Pole S.W.	81.98
Sta. 612+96.65 W. 1/4 post sec. 6 Portage Twp. Brass plate	#244		"X" cut in Curb East	08.25
			"X" cut in Curb N.E.	14.60'
Sta. 612+96.65 W. 1/4 post sec. 6 Portage Twp. Brass plate	#244		"X" cut in Curb S.E.	16.90'