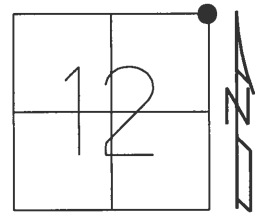


**O.D.O.T. DISTRICT 2 SURVEY OFFICE (USE ONLY)**

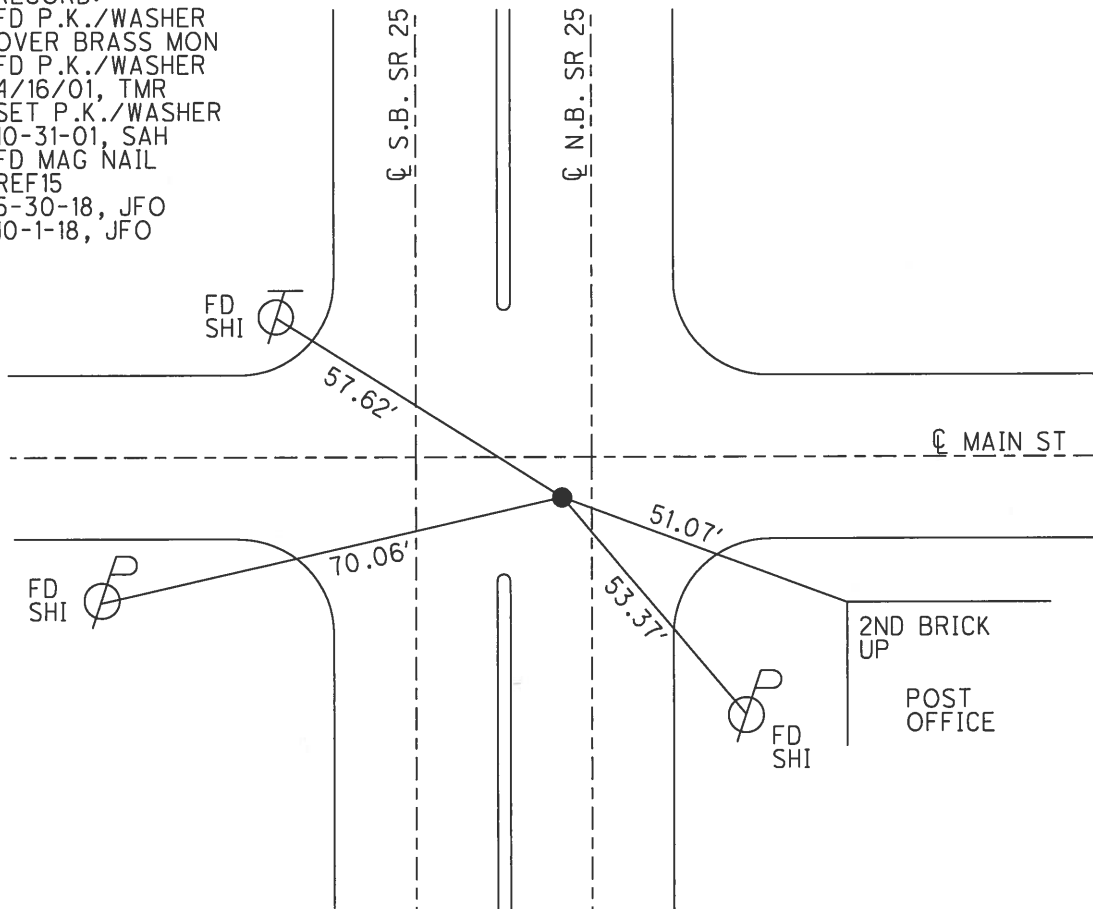
PERSONNEL \_\_\_\_\_ REFERENCE NO. 15 SHEET 27 OF 36  
 NOTES HUSS DATE 4/16/01 ROUTE SR 25  
 H.C. ROUSOS WEATHER CLOUDY/RAIN COUNTY WOOD  
 R.C. VAN DUSEN TEMP. 42° TOWNSHIP LIBERTY  
 SECTION 12  
 DWG BY MILLER PID NO PID T 4 N R 10 E

TYPE MONUMENT \_\_\_\_\_ P.K./WASHER  
 ON SURFACE - ~~BELOW~~ ON \_\_\_\_\_  
 OFFSET  $\phi$  PAVEMENT 3.1' ~~TT~~ : RT  
 - TO - EDGE PAVEMENT  
 STATION: 346+50



HORZ. DATUM: NAD83(2011) GEOID: NAVD88 2012A  
 GRID: NORTHING: 606871.234 EASTING: 1652550.794

RECORD:  
 FD P.K./WASHER  
 OVER BRASS MON  
 FD P.K./WASHER  
 4/16/01, TMR  
 SET P.K./WASHER  
 10-31-01, SAH  
 FD MAG NAIL  
 REF15  
 5-30-18, JFO  
 10-1-18, JFO



# O.D.O.T. DISTRICT 2 SURVEY OFFICE

PERSONNEL

REFERENCE NO. 15

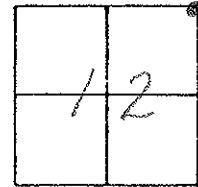
SHEET 16 OF 23

NOTES Huss  
 H.C. Rousos  
 R.C. Dan Dusen

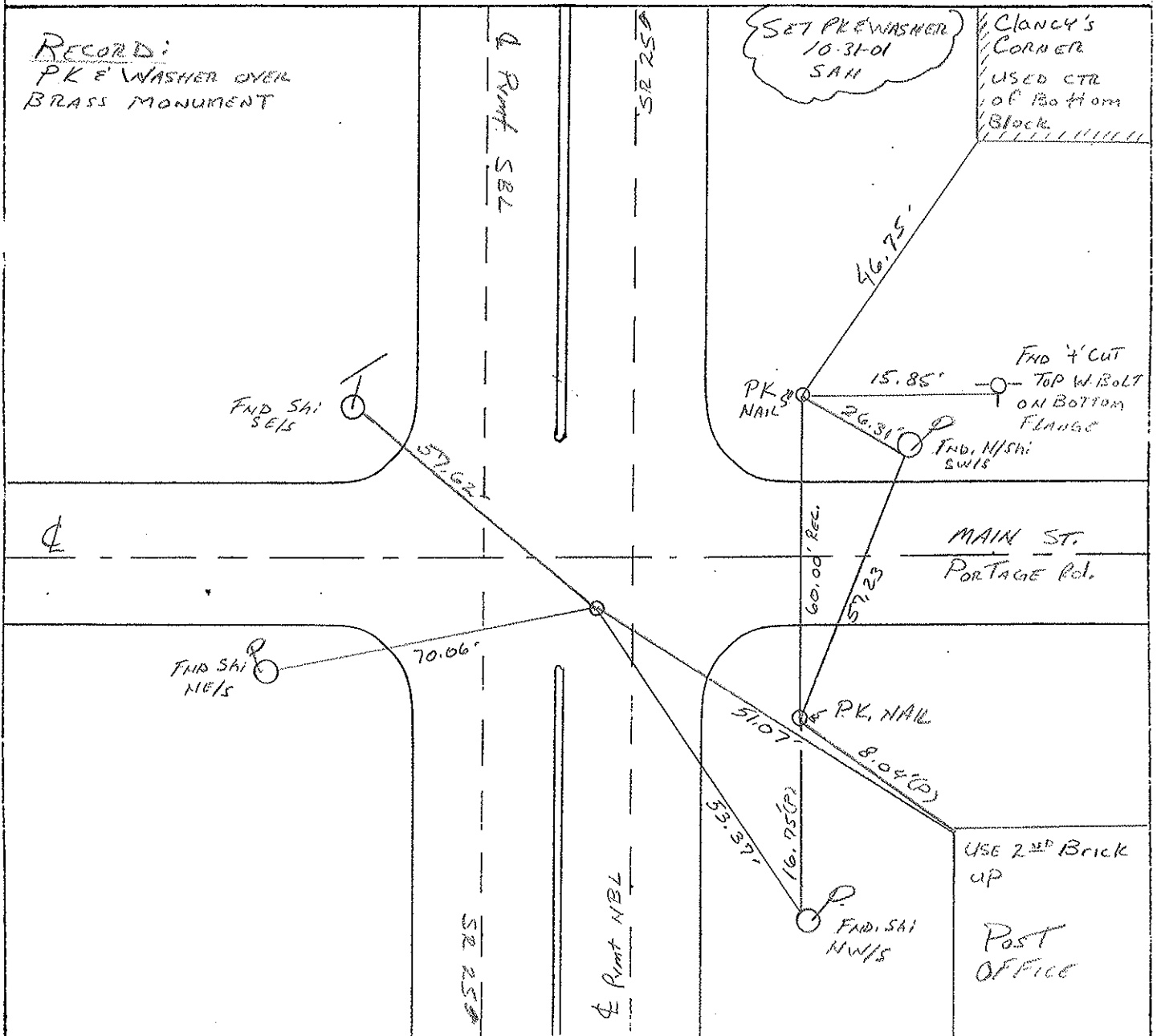
DATE 4-16-01  
 WEATHER Clly. Rain  
 TEMP. +42°F

ROUTE SR 25  
 COUNTY WOOD  
 TOWNSHIP LIBERTY  
 SECTION 12  
 T. 4 N. R. 10 E.

TYPE MONUMENT PK & WASHER  
 ON SURFACE - ~~BELOW~~ Surface  
 LEFT - ℄ PAV'T. - RIGHT 3.1' @ 1.0' South of ℄ Rmt  
TO EDGE PAVEMENT Portage Rd. West  
 S.L.M. 346-150



RECORD:  
 PK & WASHER OVER  
 BRASS MONUMENT



# O.D.O.T. DISTRICT 2 SURVEY OFFICE

PERSONNEL

REFERENCE NO. 15

SHEET 16 OF 23

NOTES HOFFMAN

H.C. LOEMRKE

R.C. BARNHISEL

DATE 3-27-91

WEATHER P. CLEAR

TEMP. 55°

ROUTE SR 25

COUNTY WOOD

TOWNSHIP LIBERTY

SECTION 12

T4 NR 10 E

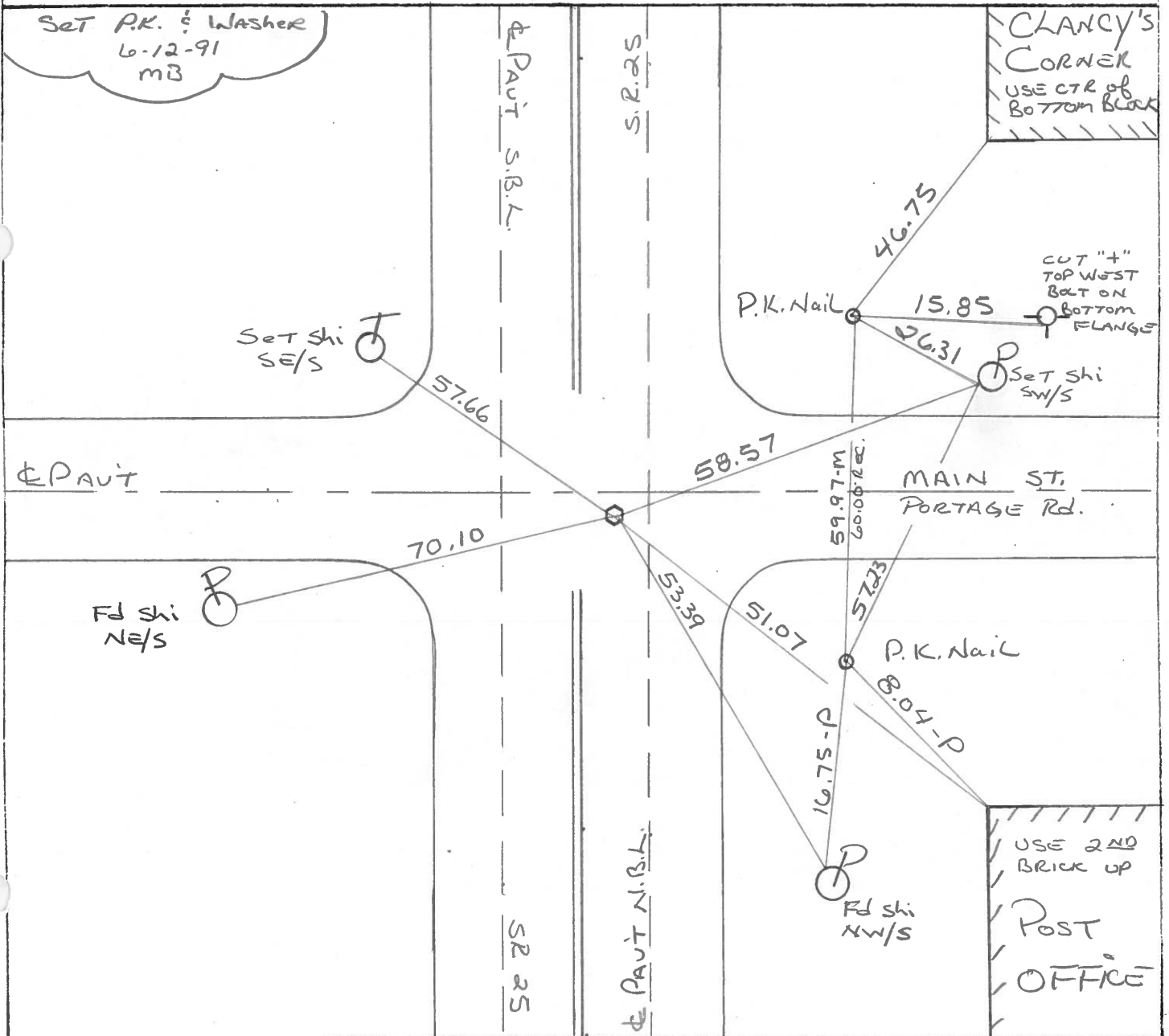
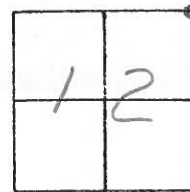
TYPE MONUMENT BRASS MONUMENT

ON SURFACE - BELOW 2"

LEFT- & PAV'T. - RIGHT 3.1' S 1.0' South of E Part

TO EDGE PAVEMENT PORTAGE Rd. WEST

S.L.M. 346 + 50



O.D.O.T. DISTRICT 2 SURVEY OFFICE

SHEET \_\_\_\_\_ OF \_\_\_\_\_

County WOOD <sup>U.S.</sup> ~~S.R.~~ 25

Date OK. - 5-18-78  
5-21-71

Township LIBERTY

Weather \_\_\_\_\_

Section 12

Temp. \_\_\_\_\_

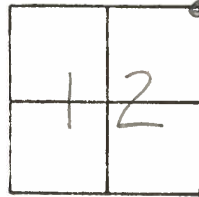
T4N, R10E

Personnel BURNSIDE

SMITH

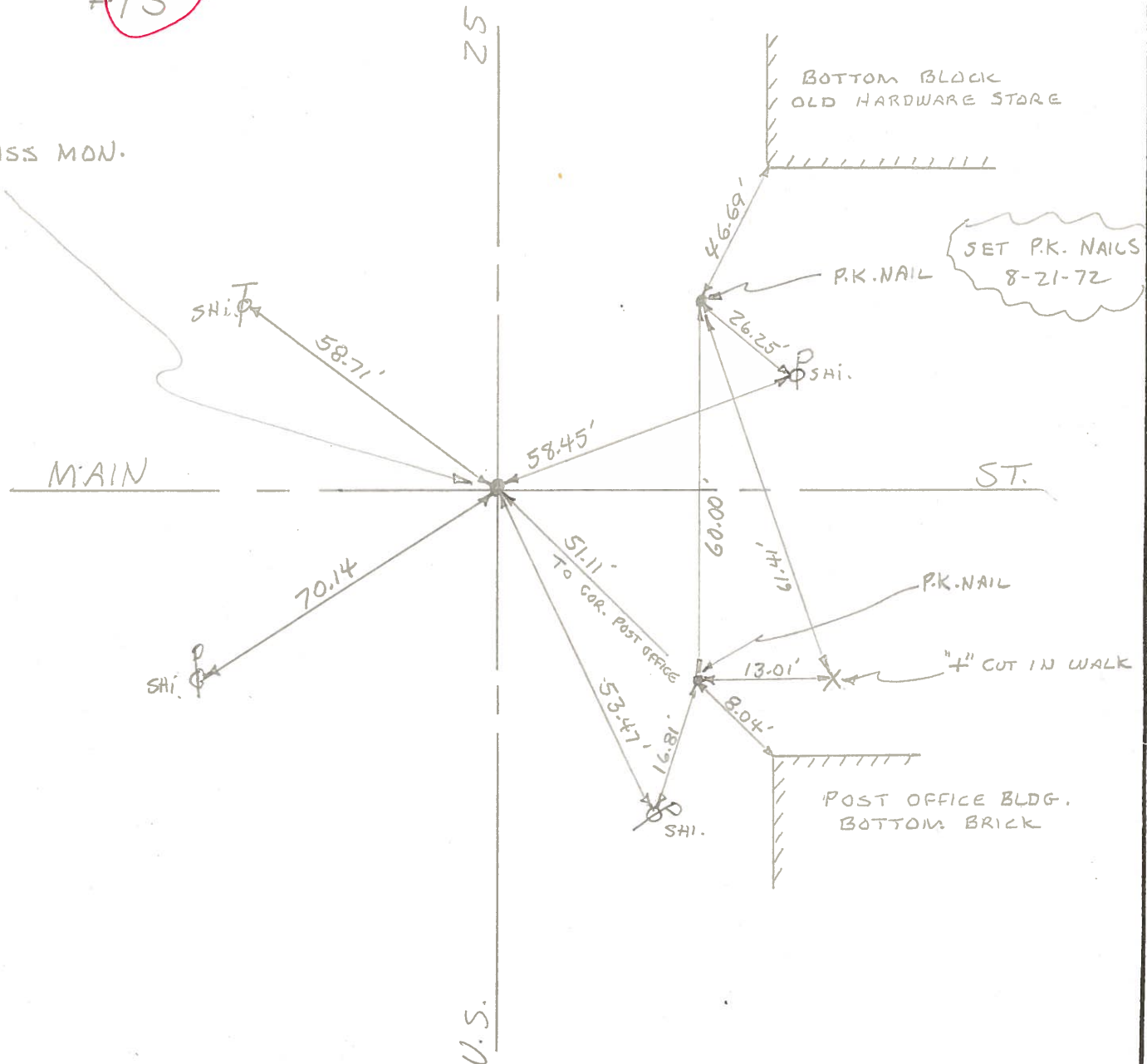
BOWERS

HOLCOMBE



#15

BRASS MON.



PERSONNEL TITLE PERSONNEL TITLE

COUNTY Wood

DATE June 1<sup>st</sup> 1964

S. R. US-25

WEATHER

SEC.

TEMP.

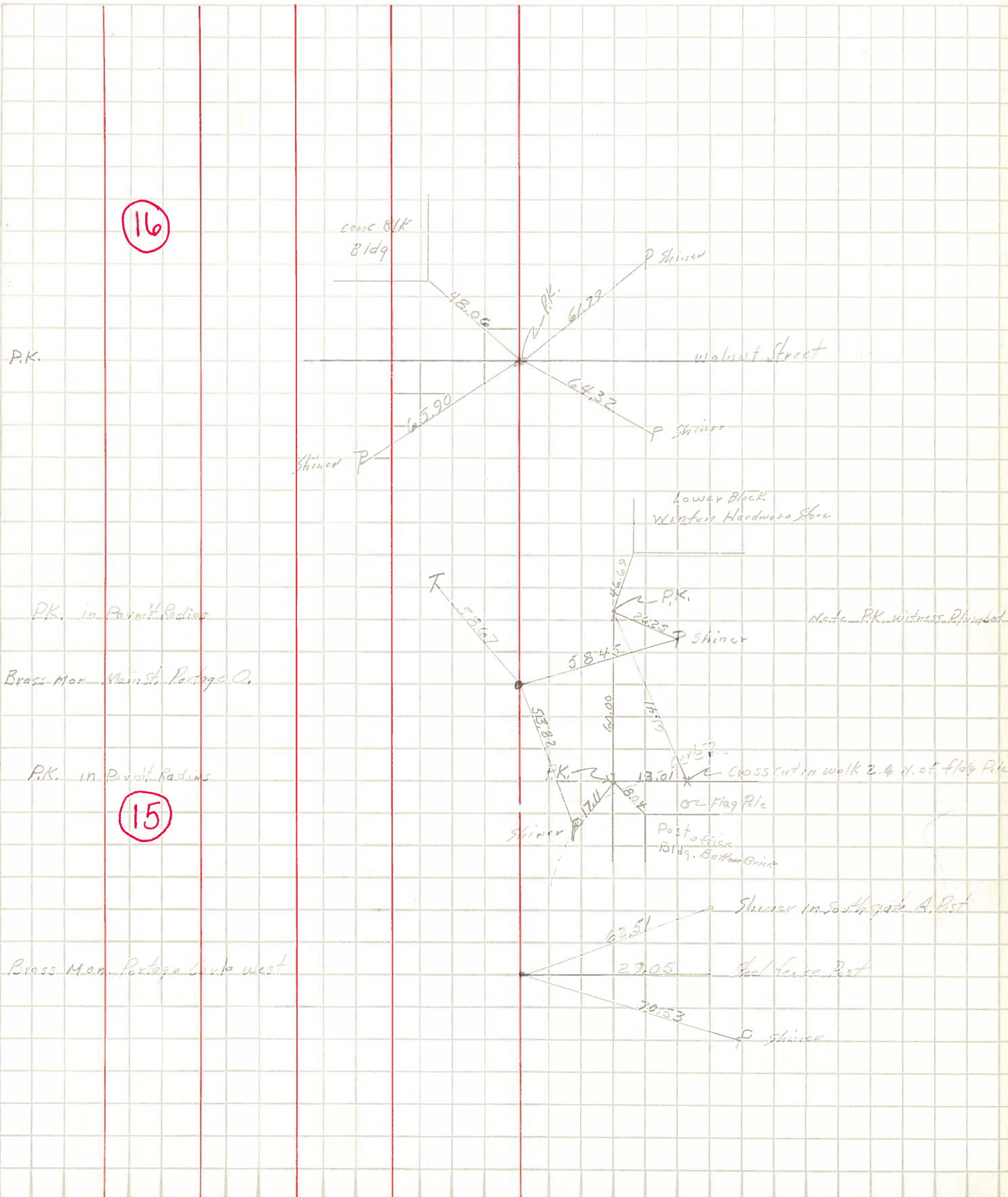
DESCRIPTION US 25 Portage Crp

JOB NO.

LEFT

CENTER LINE

RIGHT



PERSONNEL \_\_\_\_\_ TITLE \_\_\_\_\_ PERSONNEL \_\_\_\_\_ TITLE \_\_\_\_\_  
 COUNTY Wood DATE 4-7-60  
 S. R. U.S. #25 WEATHER \_\_\_\_\_  
 SEC. \_\_\_\_\_ TEMP. \_\_\_\_\_

DESCRIPTION \_\_\_\_\_ LEFT \_\_\_\_\_ CENTER LINE \_\_\_\_\_ RIGHT \_\_\_\_\_ JOB NO. \_\_\_\_\_

DESCRIPTION	LEFT	CENTER LINE	RIGHT	JOB NO.
Sta. 560+05.10 Portage Corp Line East Brass plate			Shiner in End Post N.E. 29.74 Shiner in P.P. E.N.E. 40.35 40.49 Shiner in T.P. N.W. 39.92 Shiner in 12' Evergreen W.N.W. 56.93 Shiner in 30' Elm W. 64.10 Wedge part. 11.63' E edge 12.32' Shiner 16" Maple S.E. 68.47	
(13) #241				
Sta. 562+44.4 Portage Corp. West Brass plug, <del>top of plug</del>			Shiner in Anchor Post N.E. 62.63 Shiner in T.P. N.W. 44.15 Shiner in T.P. S.W. 91.00 Shiner in P.P. S.E. 70.48 73.05 Wedge part. 11.83 E edge 12.12 Shiner in End Post N.N.E. 88.86 Iron Fence Post East 29.03	
(14) #242				
Sta. 588+94.96 S.E. cor. Sec. 1 Liberty Twp. N.E. cor. sec. 12 Liberty Twp. Iron rod on top of Stone, center of portage			Shiner in P.P. W.S.W. <sup>69.69</sup> 69.72 Shiner in P.P. S.E. 53.89 42.73 Iron pin in brick sidewalk S.E. 43.3 S.E. Cor. gas. Sta. N.W. 80.56 Town Pump N.W. (above gnd) 68.53 Shiner T. Pole N.W. 58.66 Shiner T. Pole N.E. 58.46	
(15) #243				
Note see sheets 6A-6B New Wit.				
Sta. 612+96.65 W. 1/4 post. sec. 6 Portage Twp. Brass plate			<del>Shiner in P.P. S.E. 47.96</del> <del>Shiner in T.P. S.S.W. 69.78</del> <del>Shiner in T.P. N.N.W. 69.94</del> Shiner in T. Pole N.W. 77.20 Shiner in T. Pole S.W. 81.98 "X" cut in curb East 08.25 "X" cut in curb N.E. 14.60' "X" cut in curb S.E. 16.90'	
(17) #244				