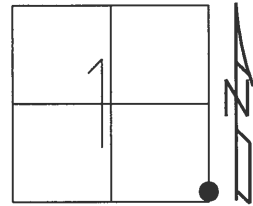


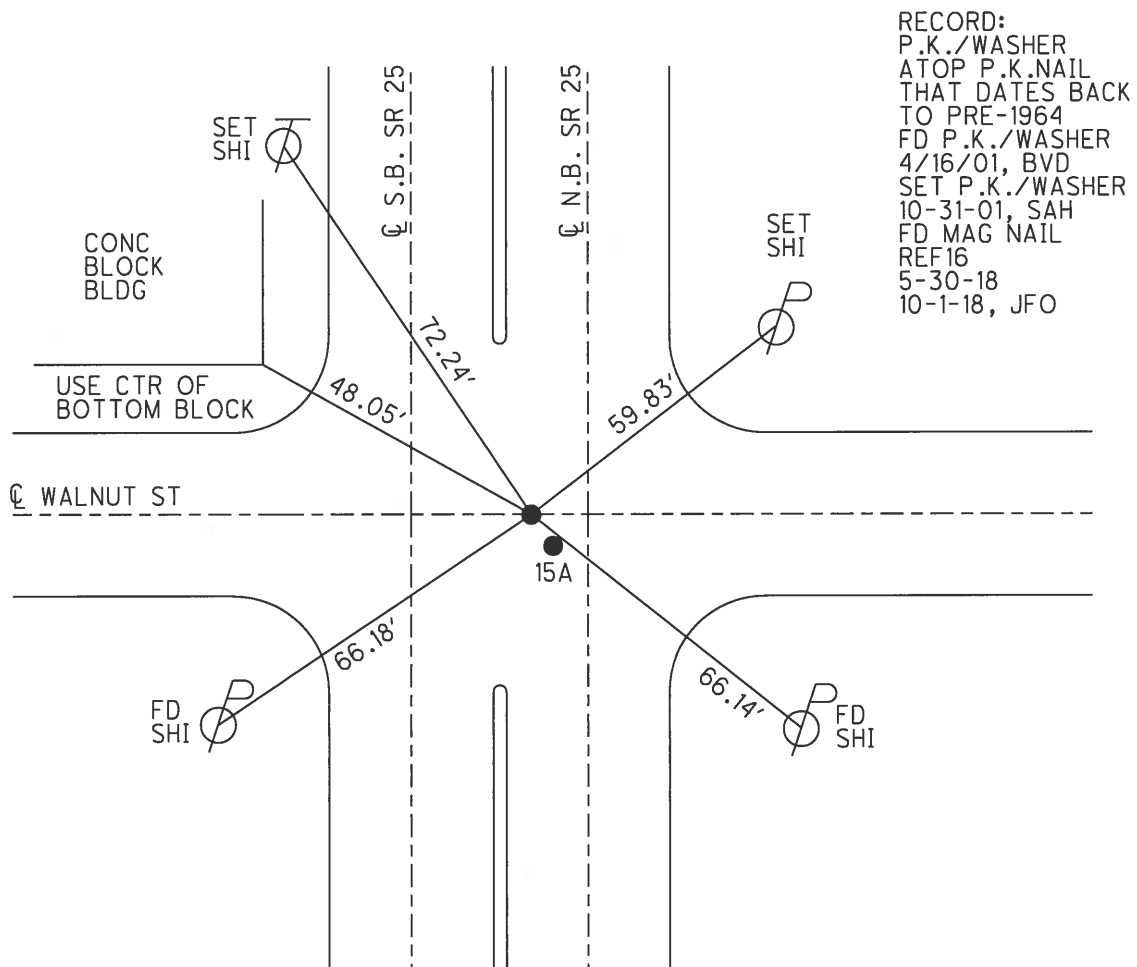
O.D.O.T. DISTRICT 2 SURVEY OFFICE (USE ONLY)

PERSONNEL \_\_\_\_\_ REFERENCE NO. 16 SHEET 29 OF 36  
 NOTES HUSS DATE 4/16/01 ROUTE SR 25  
 H.C. ROUSOS WEATHER CLOUDY/RAIN COUNTY WOOD  
 R.C. VAN DUSEN TEMP. 42° TOWNSHIP LIBERTY  
 DWG BY MILLER PID NO PID SECTION 1  
 T 4 N R 10 E

TYPE MONUMENT \_\_\_\_\_ P.K./WASHER  
 ON SURFACE - ~~BELOW~~ \_\_\_\_\_ ON \_\_\_\_\_  
 OFFSET  $\bar{C}$  PAVEMENT 1.2' ~~LT~~ : RT  
 \_\_\_\_\_ TO \_\_\_\_\_ EDGE PAVEMENT  
 STATION: 350+43



HORZ. DATUM: NAD83(2011) GEOID: NAVD88 2012A  
 GRID: NORTHING: 607264.264 EASTING: 1652555.529



RECORD:  
 P.K./WASHER  
 ATOP P.K.NAIL  
 THAT DATES BACK  
 TO PRE-1964  
 FD P.K./WASHER  
 4/16/01, BVD  
 SET P.K./WASHER  
 10-31-01, SAH  
 FD MAG NAIL  
 REF16  
 5-30-18  
 10-1-18, JFO

# O.D.O.T. DISTRICT 2 SURVEY OFFICE

PERSONNEL \_\_\_\_\_

REFERENCE NO. 16

SHEET 17 OF 23

NOTES Huss

H.C. Rousos

R.C. VanDusen

DATE 4-16-01

WEATHER Cloudy-Rain

TEMP. +42°F

ROUTE SR 25

COUNTY WOOD

TOWNSHIP LIBERTY

SECTION 1

T 4 N R 10 E

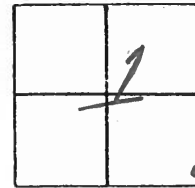
TYPE MONUMENT PK & WASHER

ON SURFACE - BELOW \_\_\_\_\_

LEFT - & PAV'T. - RIGHT \_\_\_\_\_

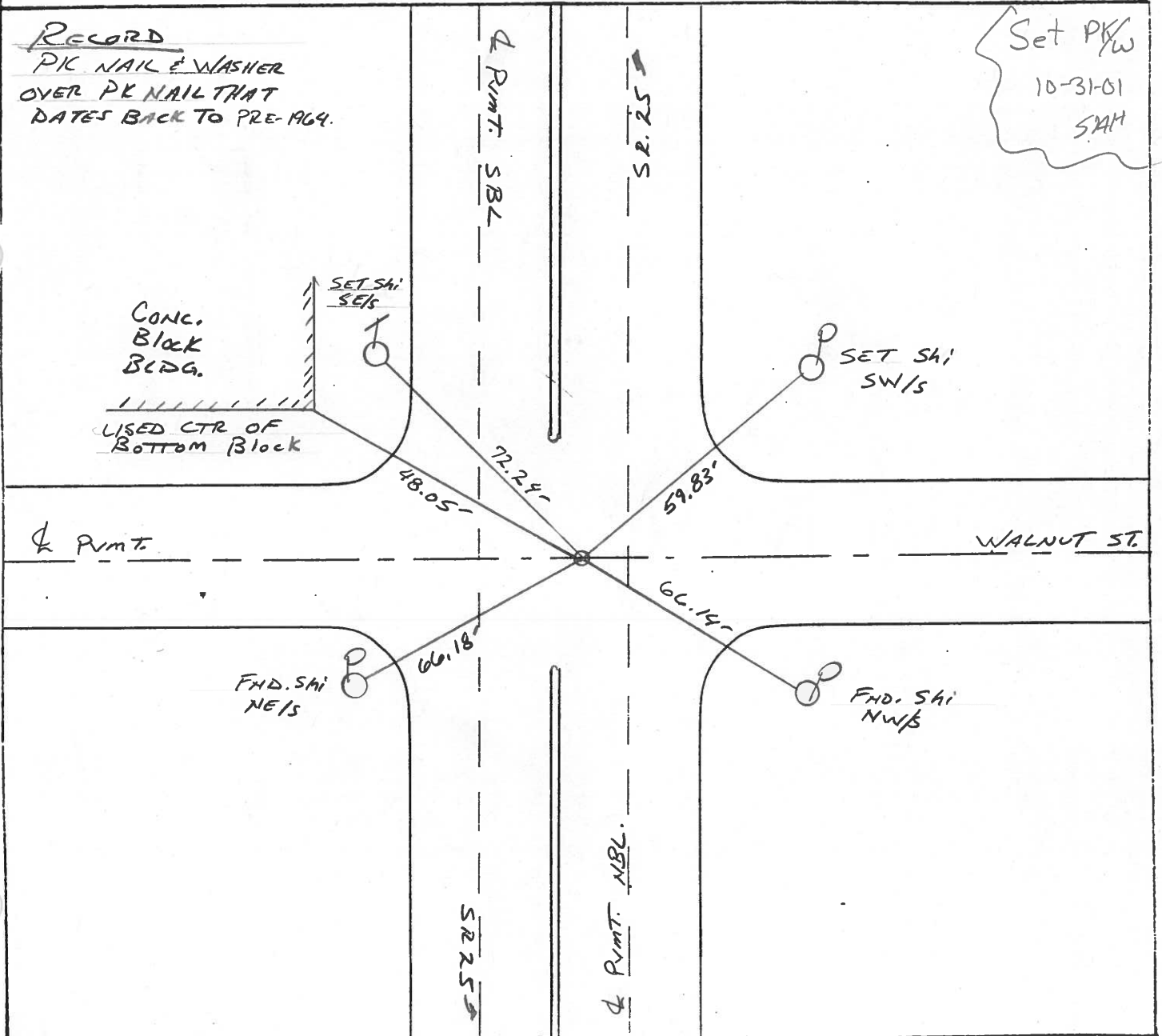
\_\_\_\_\_ TO \_\_\_\_\_ EDGE PAVEMENT

S.L.M. \_\_\_\_\_



RECORD  
 PK NAIL & WASHER  
 OVER PK NAIL THAT  
 DATES BACK TO PRE-1964.

Set PKW  
 10-31-01  
 SAH



# O.D.O.T. DISTRICT 2 SURVEY OFFICE

PERSONNEL

REFERENCE NO. 16

SHEET 17 OF 23

NOTES HOFFMAN

H.C. LOENRKE

R.C. BARNHISE

DATE 3-27-91

WEATHER P. CLEAR

TEMP. 55°

ROUTE SR 25

COUNTY WOOD

TOWNSHIP LIBERTY

SECTION 1

T 4 N R 10 E

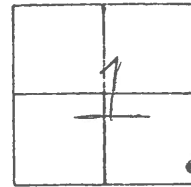
TYPE MONUMENT P.K.

ON SURFACE - BELOW YES

~~LEFT~~ - ~~PAV'T.~~ - RIGHT 2.6

24.0 TO RT EDGE PAVEMENT - CURB LINE

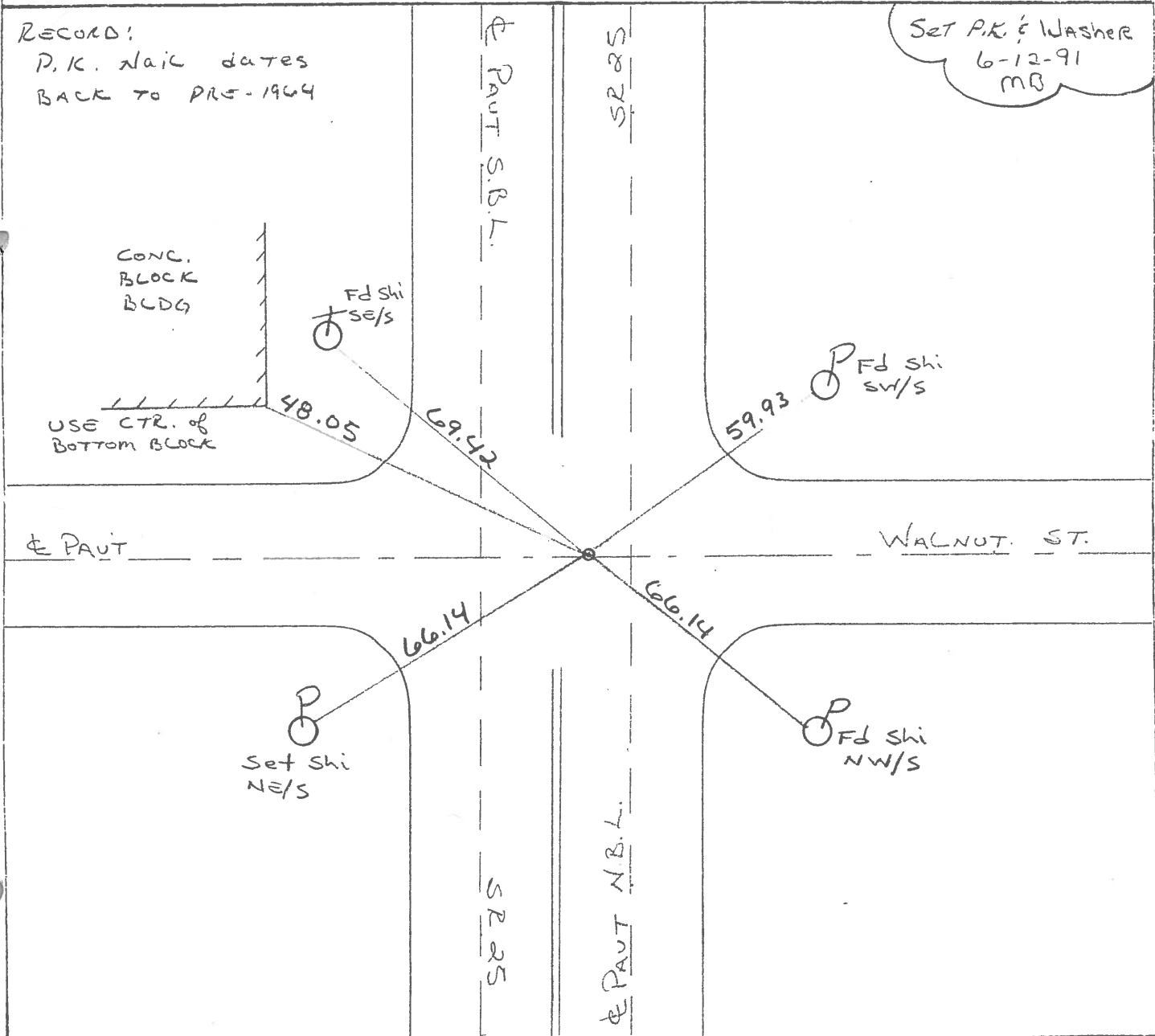
S.L.M. 350+43



RECORD:

P.K. nail dates  
BACK TO PRE-1964

Set P.K. & Washer  
6-12-91  
MB



O.D.O.T. DISTRICT 2 SURVEY OFFICE

SHEET \_\_\_\_\_ OF \_\_\_\_\_

County WOOD <sup>U.S.</sup> ~~S.R.~~ 25

Date OK. 5-18-78  
5-21-71

Township LIBERTY

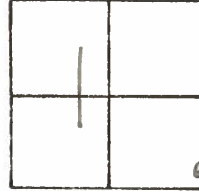
Weather CLEAR

Section 1

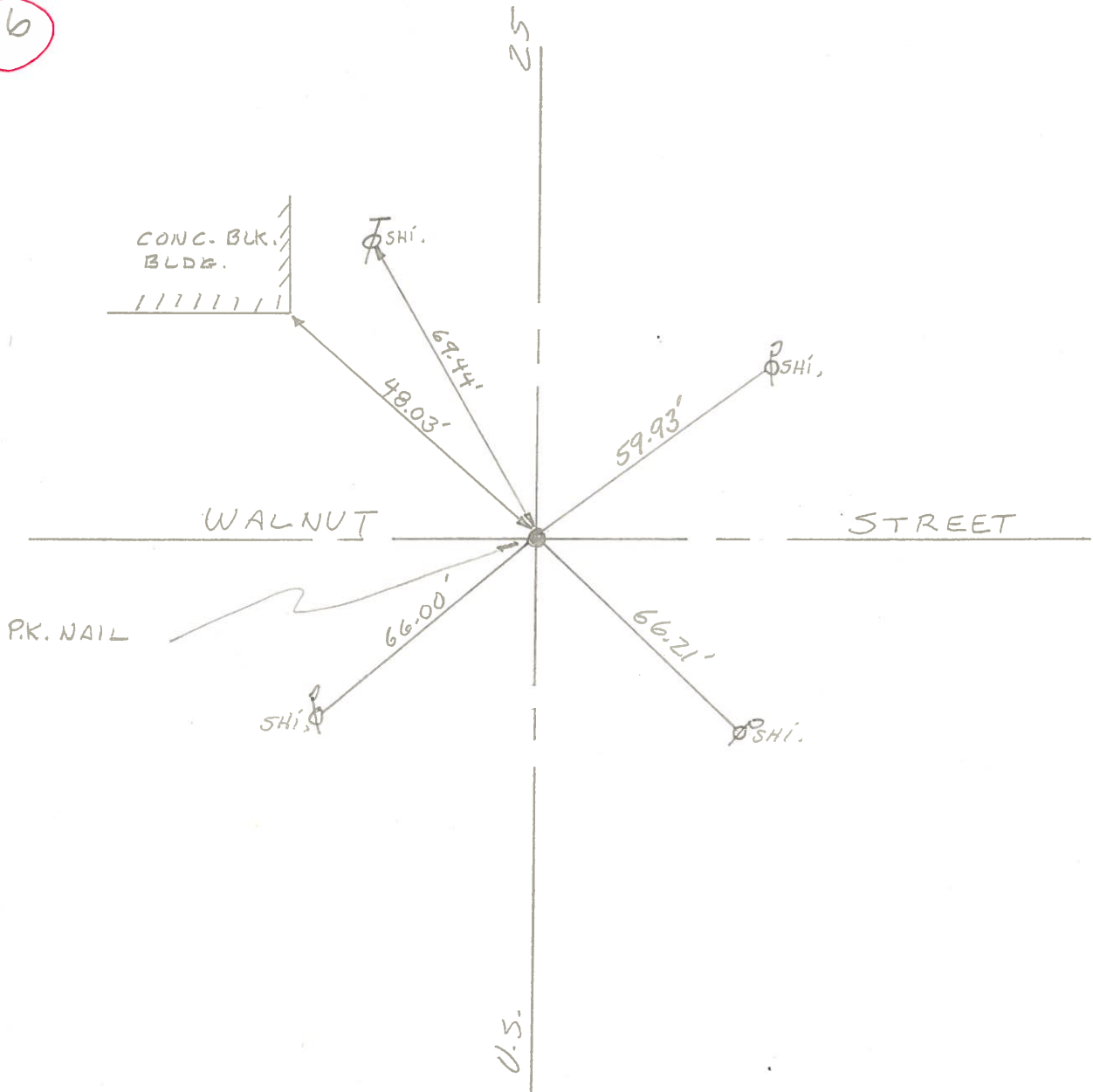
Temp. 72°

T4N, R10E

Personnel BURNSIDE  
SMITH  
BOWERS  
HOLCOMBE



#16



PERSONNEL TITLE PERSONNEL TITLE

COUNTY Wood DATE June 1st 1964

S. R. 618-25 WEATHER \_\_\_\_\_

SEC. \_\_\_\_\_ TEMP. \_\_\_\_\_

DESCRIPTION US 25 Portage Corp JOB NO. \_\_\_\_\_

LEFT CENTER LINE RIGHT

