

O.D.O.T. DISTRICT 2 SURVEY OFFICE (USE ONLY)

PERSONNEL _____ REFERENCE NO. 17 SHEET 33 OF 36

NOTES HUSS DATE 4/16/01 ROUTE SR 25

H.C. ROUSOS WEATHER CLOUDY/RAIN COUNTY WOOD

R.C. VAN DUSEN TEMP. 41° TOWNSHIP LIBERTY

DWG BY MILLER PID NO PID SECTION 1

TYPE MONUMENT SM.R.R.SPIKE T 4 N R 10 E

ON SURFACE - ~~BELOW~~ ON _____

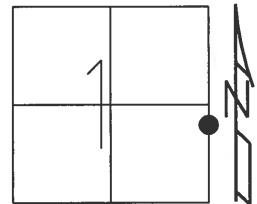
OFFSET $\text{\textcircled{C}}$ PAVEMENT 5.4' ~~LT~~ : RT

~~TO~~ ~~EDGE PAVEMENT~~

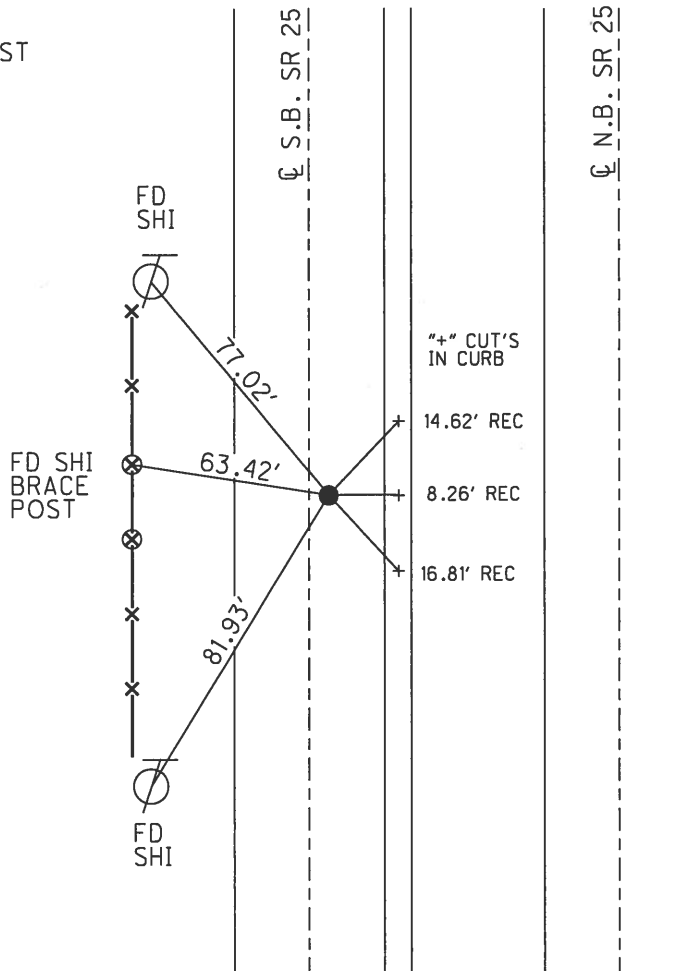
STATION: 370+52

HORIZ.DATUM: _____ GEOID: _____

GRID: NORTHING: _____ EASTING: _____



RECORD:
 PORTAGE CORP LINE EAST
 FD BRASS MON
 FD SM.R.R.SPIKE
 4/16/01, BVD
 SET P.K./WASHER
 6-12-91, MB
 SET P.K./WASHER
 10-31-01, SAH
 FD HOLE
 5-30-18, JFO



O.D.O.T. DISTRICT 2 SURVEY OFFICE

PERSONNEL _____

REFERENCE NO. 17

SHEET 19 OF 23

NOTES Hues

H.C. Rousos

R.C. Van Dusen

DATE 4-16-01

WEATHER Cloudy - Rain

TEMP. +41°F

ROUTE SR-25

COUNTY Wood

TOWNSHIP Liberty

SECTION 1

T 4 N 10 E

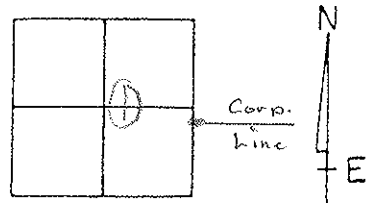
TYPE MONUMENT Small RR. Spk.

ON SURFACE - ~~BENCH~~ surface

LEFT - ℄ PAV'T. - RIGHT 5.4' East of ℄ Pav. SR. Lane

JO. EDGE PAVEMENT

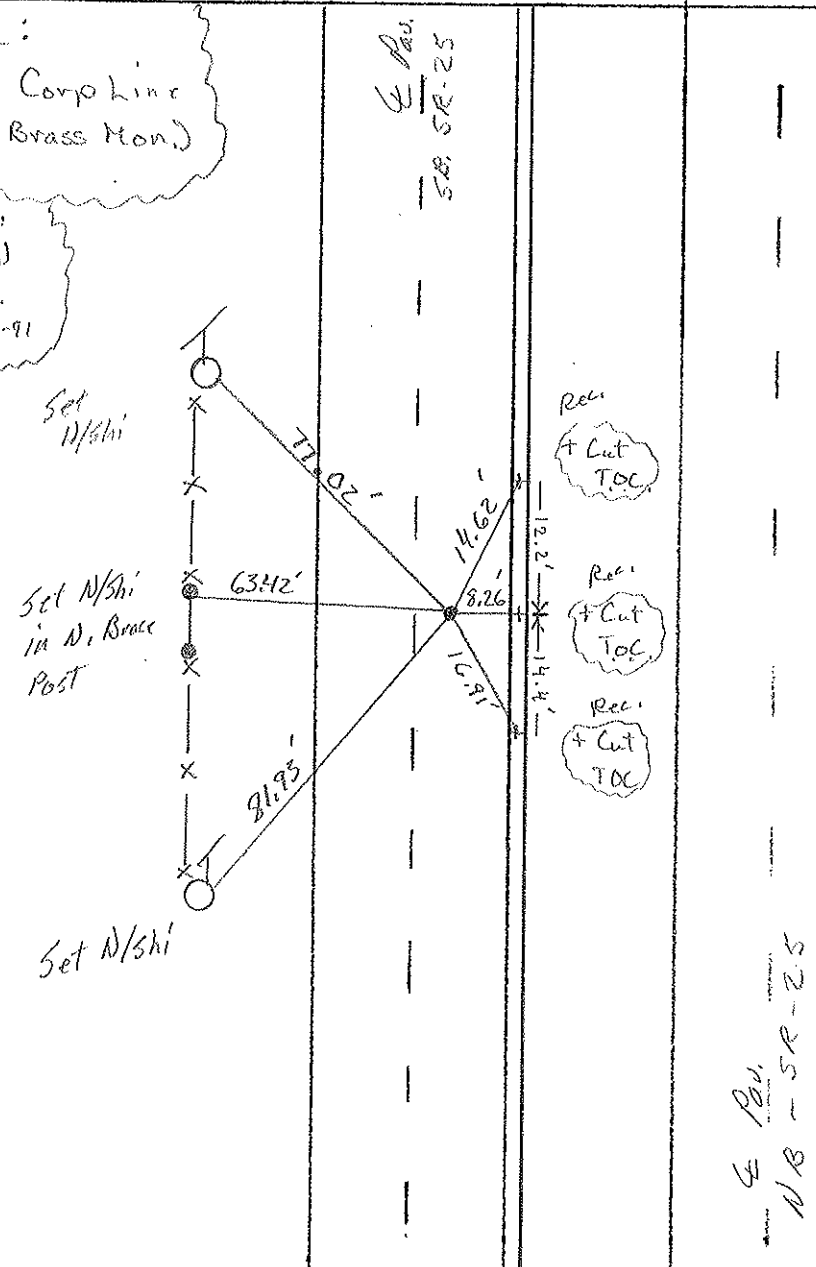
S.L.M. 370+52



Record:
Portage Corp Line
East - (Brass Mon.)

Record:
Set PK/W
M.V.S.
6-12-91

Set PK/W
10-31-01
SAH



℄ Pav.
NB - SR-25

O.D.O.T. DISTRICT 2 SURVEY OFFICE

PERSONNEL

REFERENCE NO. 17

SHEET 19 OF 23

NOTES HOFFMAN

H.C. LOHRKE

DATE 3-27-91

ROUTE SR 25

R.C. BARNHISEL

WEATHER P. CLEAR

COUNTY WOOD

TEMP. 55°

TOWNSHIP LIBERTY

SECTION 1

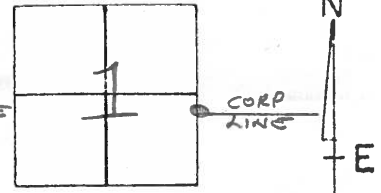
T4 N R 10 E

TYPE MONUMENT SMALL RR SPR

ON SURFACE - BELOW YES

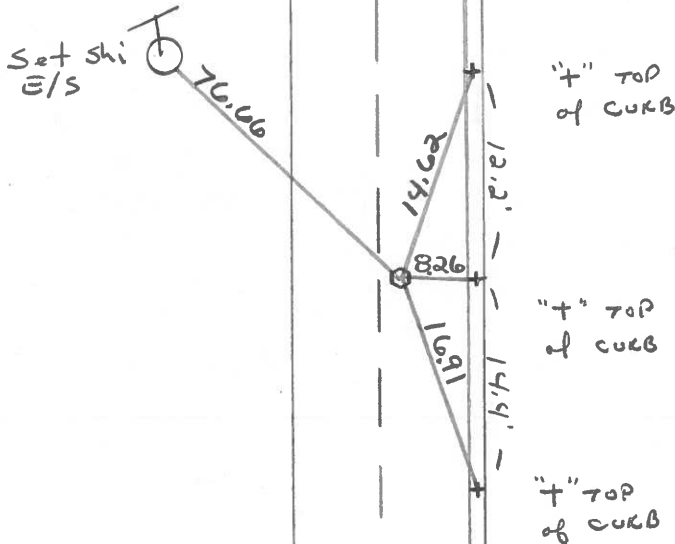
LEFT- & PAVT. - RIGHT 5.4' EAST of & PAVT OF THE SOUTHBOUND LANE
TO EDGE PAVEMENT

S.L.M. 370+52



Set P.K. & Washers
6-12-91
MB

RECORD:
PORTAGE CORP LINE
EAST
BRASS MONUMENT



SR 25

& PAVT NBL

& PAVT S.B.L.

SR 25

ODOT. DISTRICT 2 SURVEY OFFICE

SHEET _____ OF _____

a.k. 5-18-78

County WOOD ^{U.S.} S.R. 25

Date 5-24-71

Township LIBERTY

Weather RAIN

Section 1

Temp. 70°

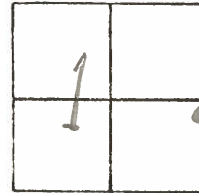
T4N, R10E

Personnel BURNSIDE

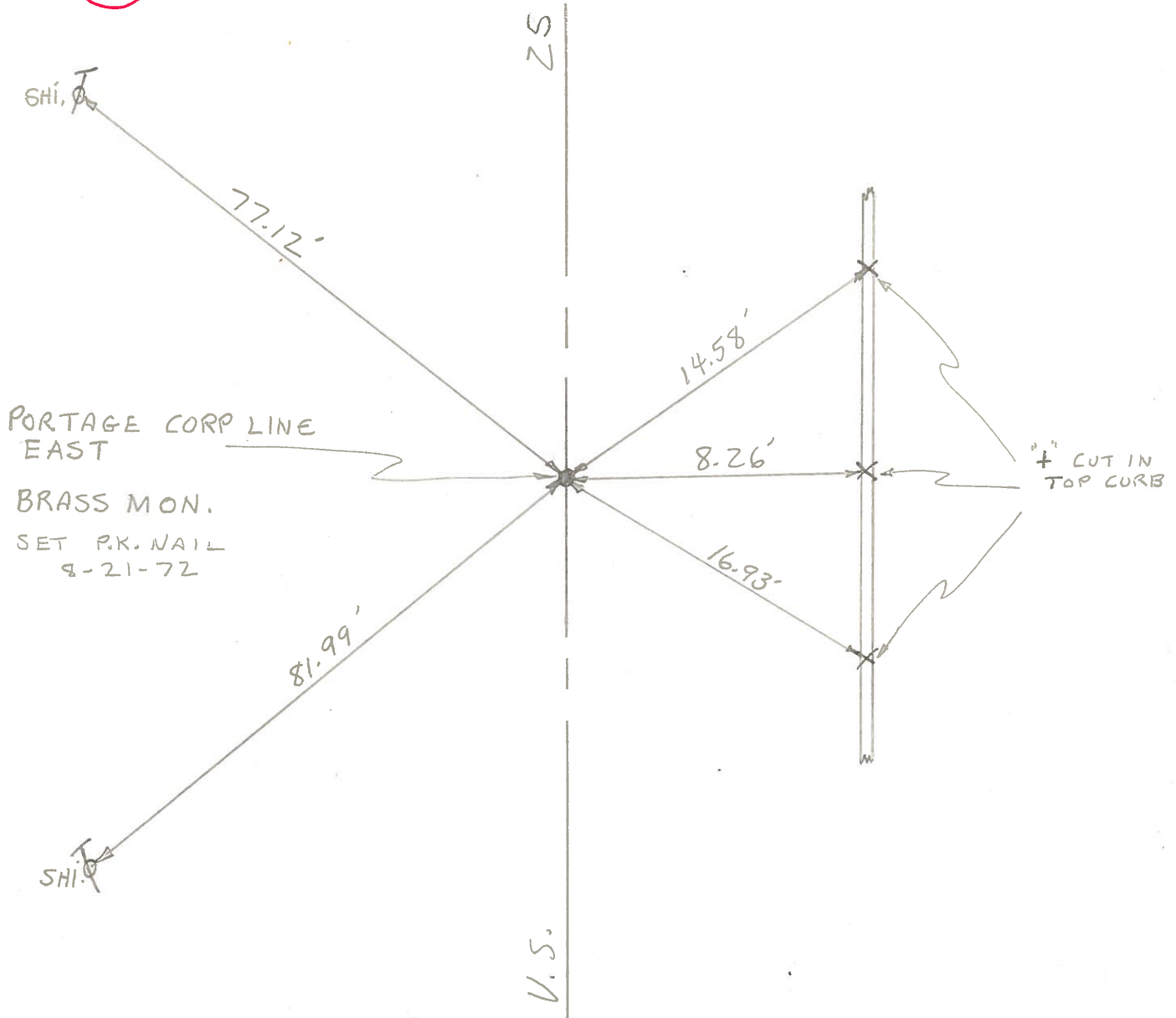
SMITH

BOWERS

HOLCOMBE



#17



PERSONNEL TITLE PERSONNEL TITLE

COUNTY Wood DATE 4-7-60

S. R. U.S. #25 WEATHER

SEC. TEMP.

DESCRIPTION LEFT CENTER LINE RIGHT JOB NO.

DESCRIPTION	LEFT	CENTER LINE	RIGHT	JOB NO.
Sta. 560+05.10 Portage Corp Line East Brass plate			Shiner in End Post N.E. 29.74 Shiner in P.P. E.N.E. 40.35 40.49 Shiner in T.P. N.W. 39.92 Shiner in 12' Evergreen W.N.W. 56.93 Shiner in 30' Elm W. 64.10 Wedge part. 11.63' E edge 12.32' Shiner 16" Maple S.E. 68.47	
	(13)	#241		
Sta. 562+44.4 Portage Corp. West Brass plug, top of plug			Shiner in Anchor Post N.E. 62.63 Shiner in T.P. N.W. 44.15 Shiner in T.P. S.W. 91.00 Shiner in P.P. S.E. 70.48 73.05 Wedge part. 11.83 E edge 12.12 Shiner in End Post N.N.E. 88.86 Iron Fence Post East 29.03	
	(14)	#242		
Sta. 588+94.96 S.E. cor. Sec. 1 Liberty Twp. N.E. cor. sec. 12 Liberty Twp. Iron rod on top of Stone, center of portage			Shiner in P.P. W.S.W. ^{69.69} 69.72 Shiner in P.P. S.E. 53.89 42.75 Iron pin in brick sidewalk S.E. 43.3 S.E. Cor. gas. Sta. N.W. 80.56 Town Pump N.W. (above gnd) 68.56 Shiner T. Pole N.W. 58.60 Shiner T. Pole N.E. 58.40	
	(15)	#243		
		Note see sheets 6A-6B New Wit.		
Sta. 612+96.65 W. 1/4 post sec. 6 Portage Twp. Brass plate			Shiner in P.P. S.E. 47.96 Shiner in T.P. S.S.W. 69.78 Shiner in T.P. N.N.W. 69.94 Shiner in T. Pole N.W. 77.20 Shiner in T. Pole S.W. 81.98 "X" cut in curb East 08.25 "X" cut in curb N.E. 14.60' "X" cut in curb S.E. 16.90'	
	(17)	#244		